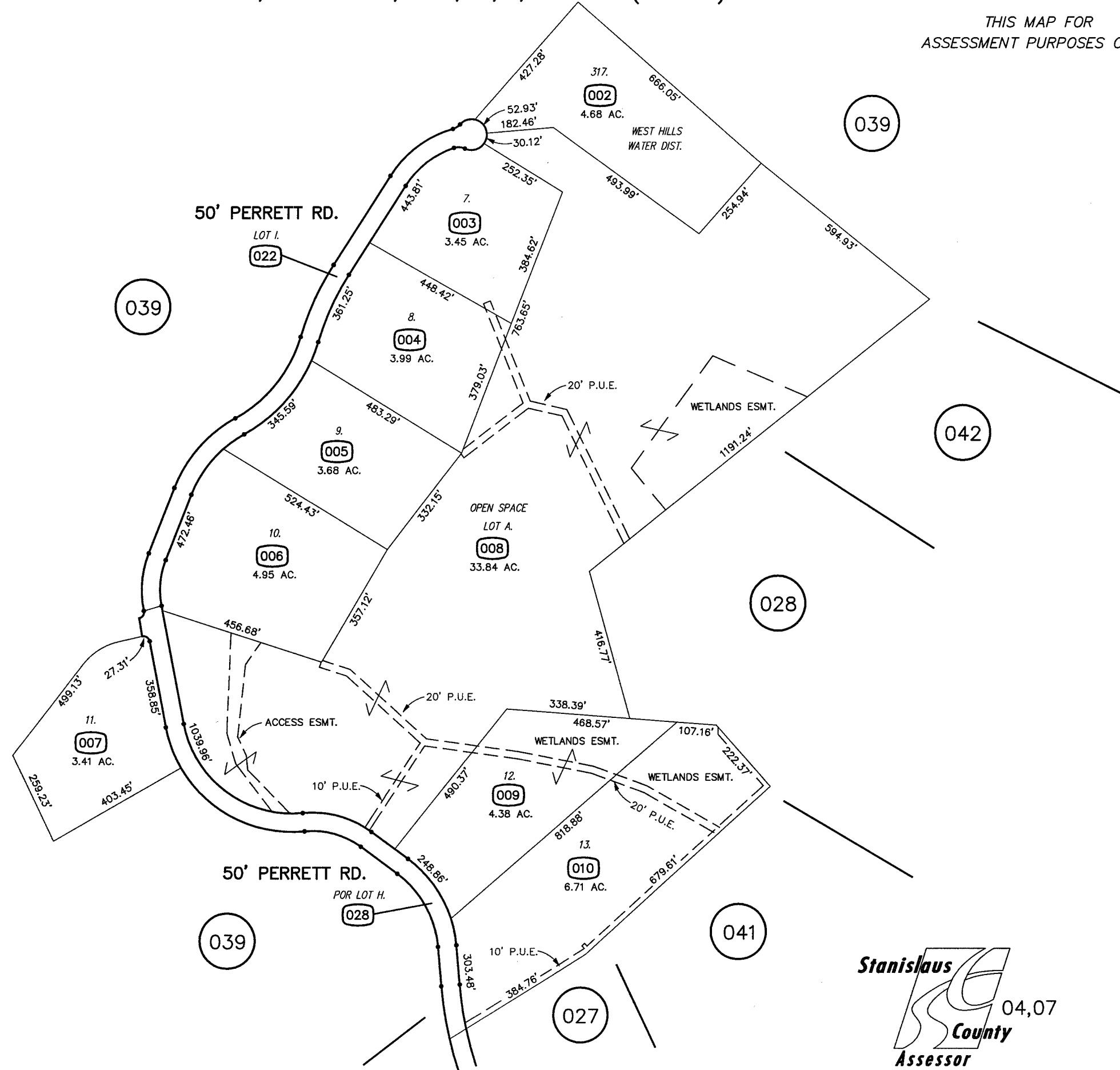
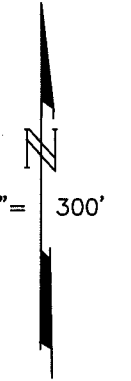


POR SECTION 13 T.6S. R.6E. M.D.B.& M.
 DIABLO GRANDE NO. 1A, LTS 7-13, 317, A, I, POR H (40M94)

083 067 025 - 023

THIS MAP FOR
 ASSESSMENT PURPOSES ONLY



FROM 025-023
 REDRAWN 08-02-06 CS
 REVISED: 09-22-06 MB.

