

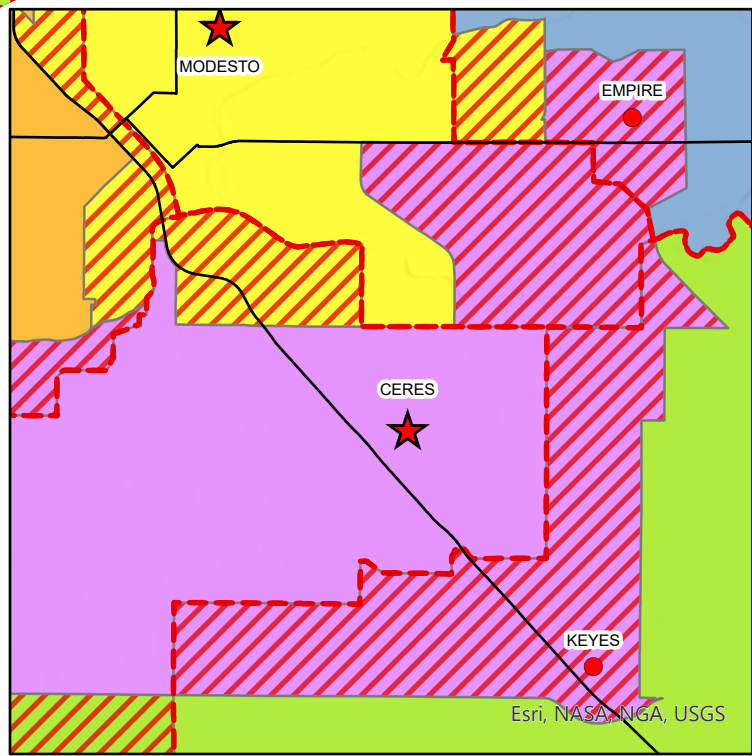
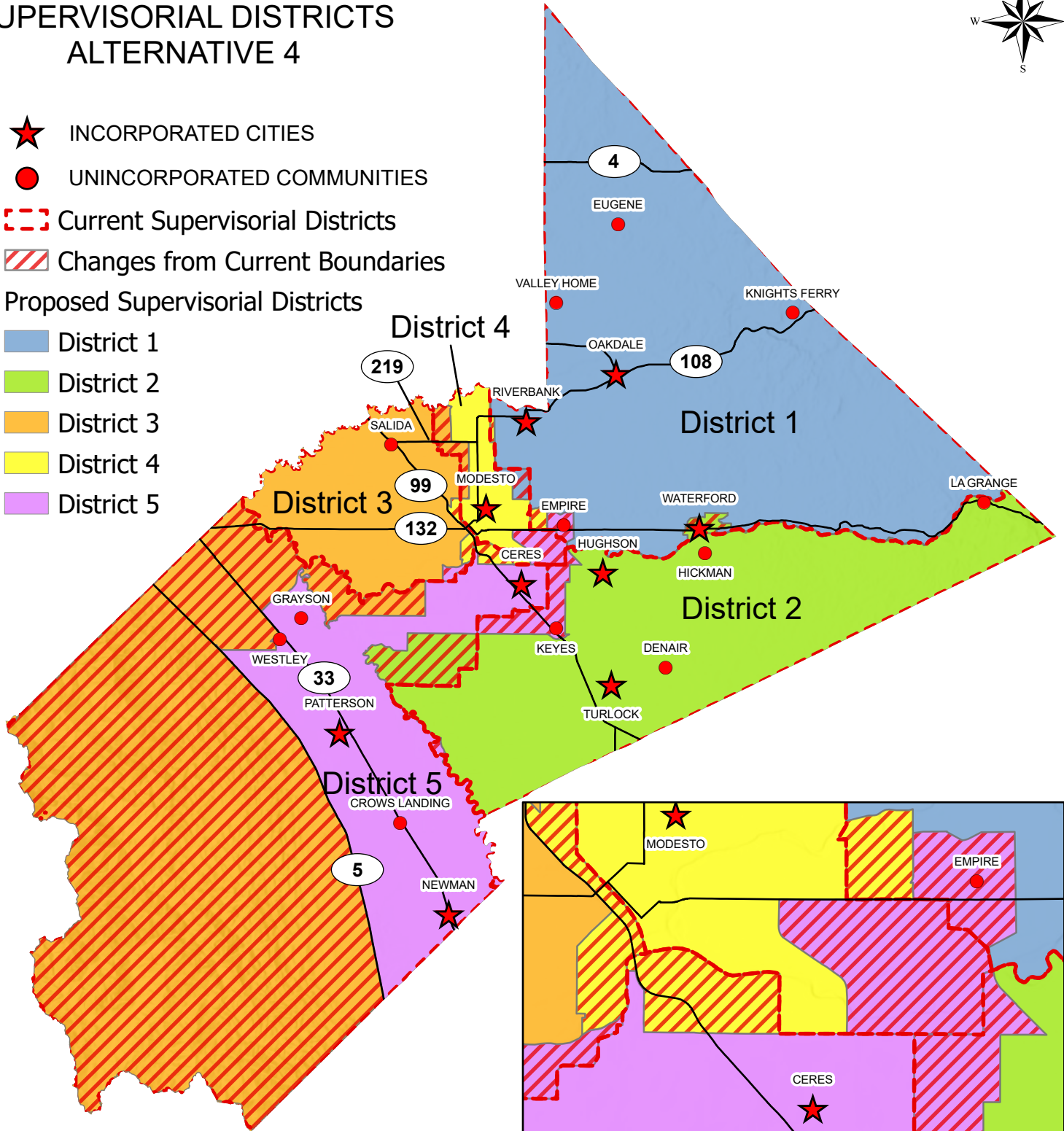
STANISLAUS COUNTY SUPERVISORIAL DISTRICTS ALTERNATIVE 4



- ★ INCORPORATED CITIES
- UNINCORPORATED COMMUNITIES
- - - Current Supervisorial Districts
- ▨ Changes from Current Boundaries

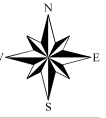
Proposed Supervisorial Districts

- District 1
- District 2
- District 3
- District 4
- District 5



Esri, NASA, NGA, USGS

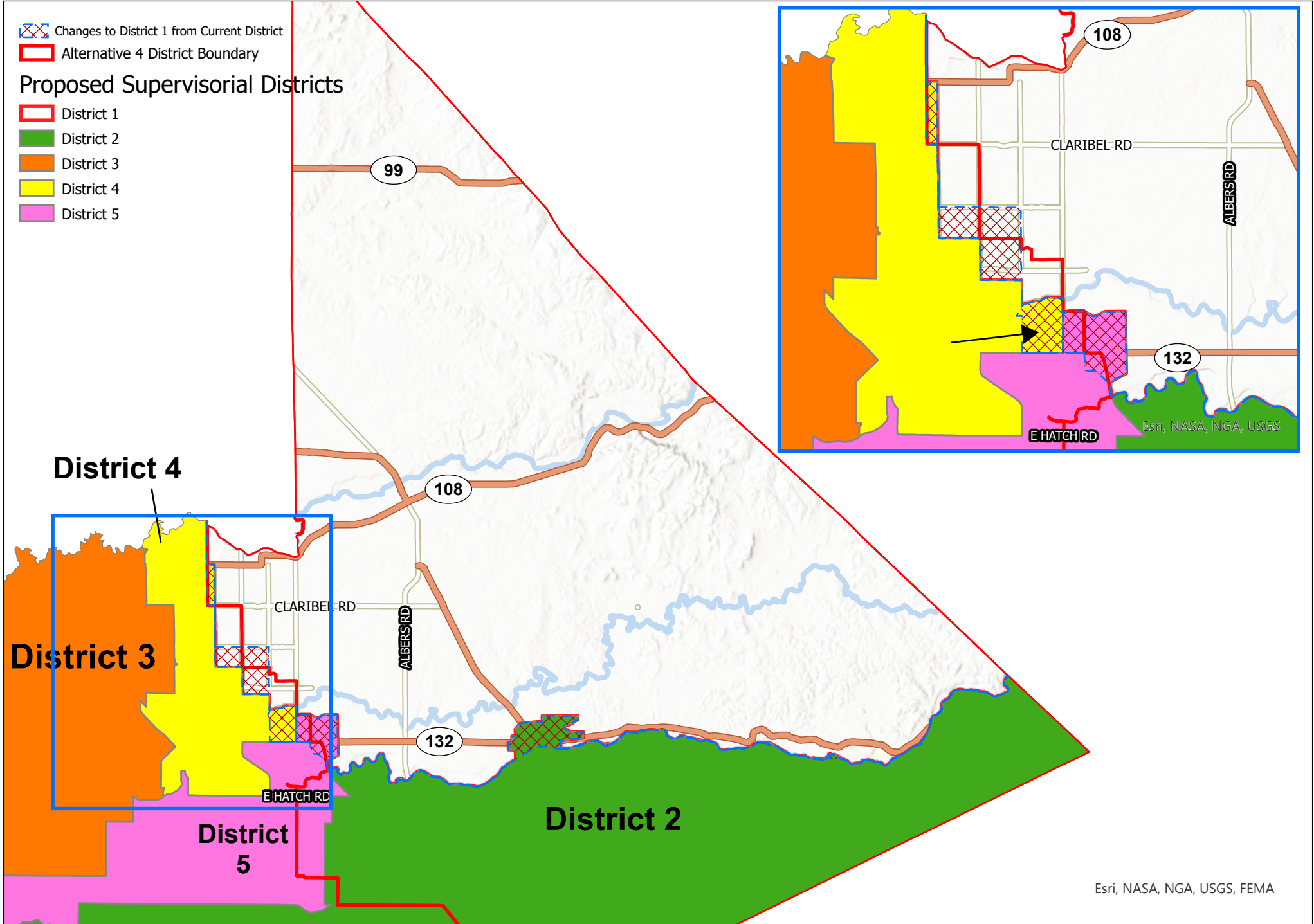
District 1 - Supervisorial Alternative Map 4



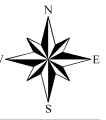
- Changes to District 1 from Current District
- Alternative 4 District Boundary

Proposed Supervisorial Districts

- District 1
- District 2
- District 3
- District 4
- District 5



District 3 - Supervisorial Alternative Map 4

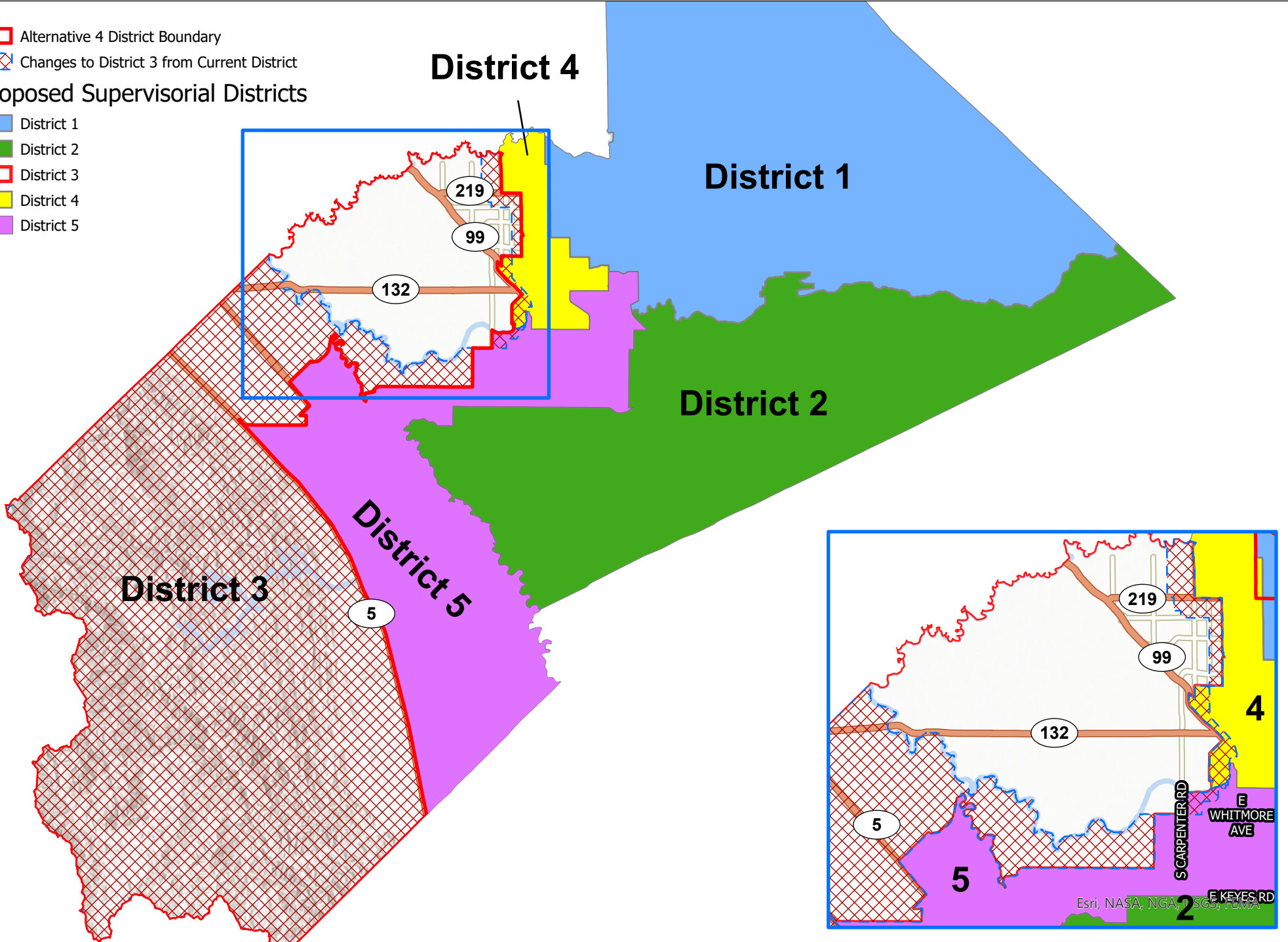


Alternative 4 District Boundary

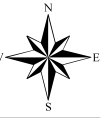
Changes to District 3 from Current District

Proposed Supervisorial Districts

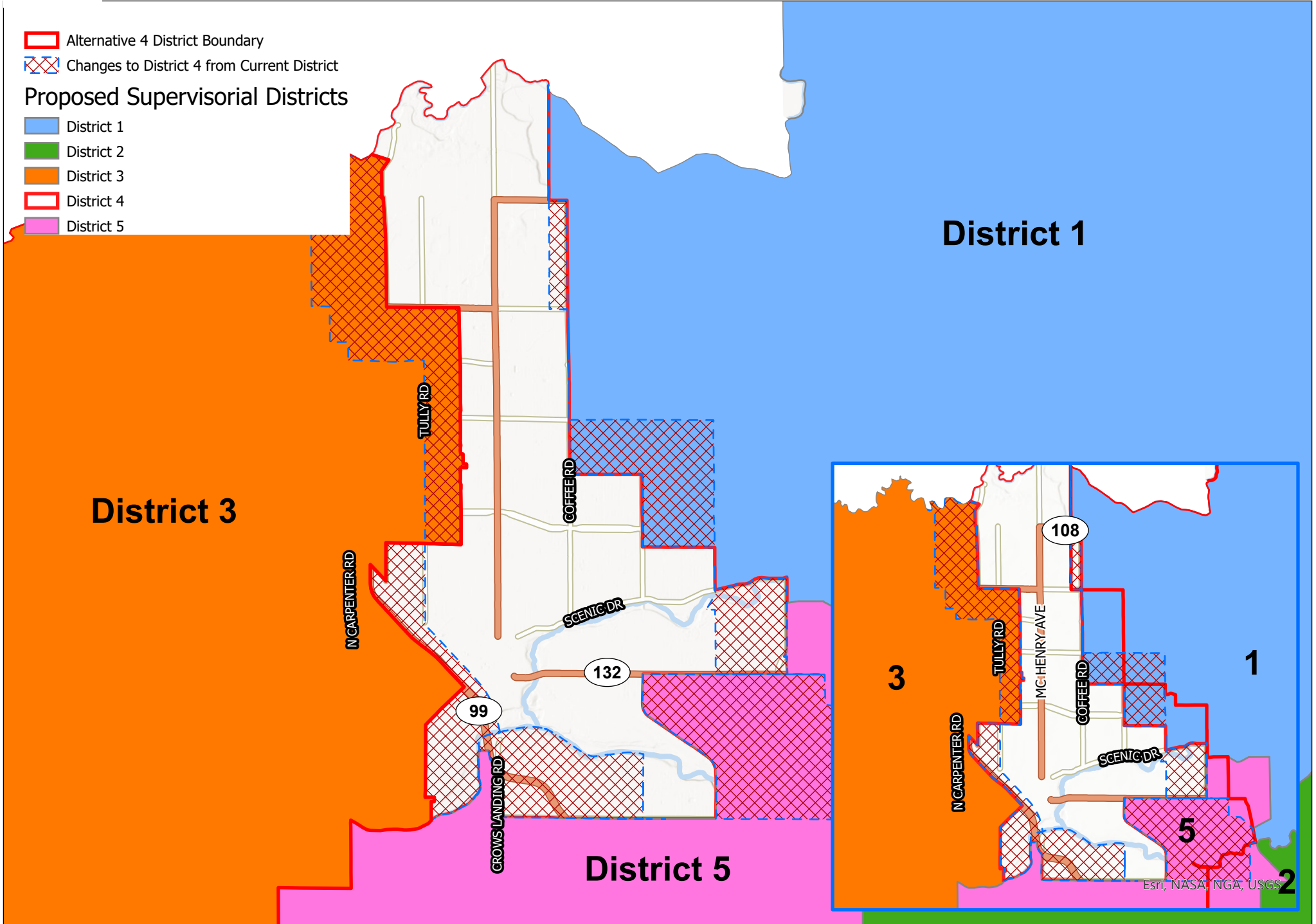
- District 1
- District 2
- District 3
- District 4
- District 5



District 4 - Supervisorial Alternative Map 4



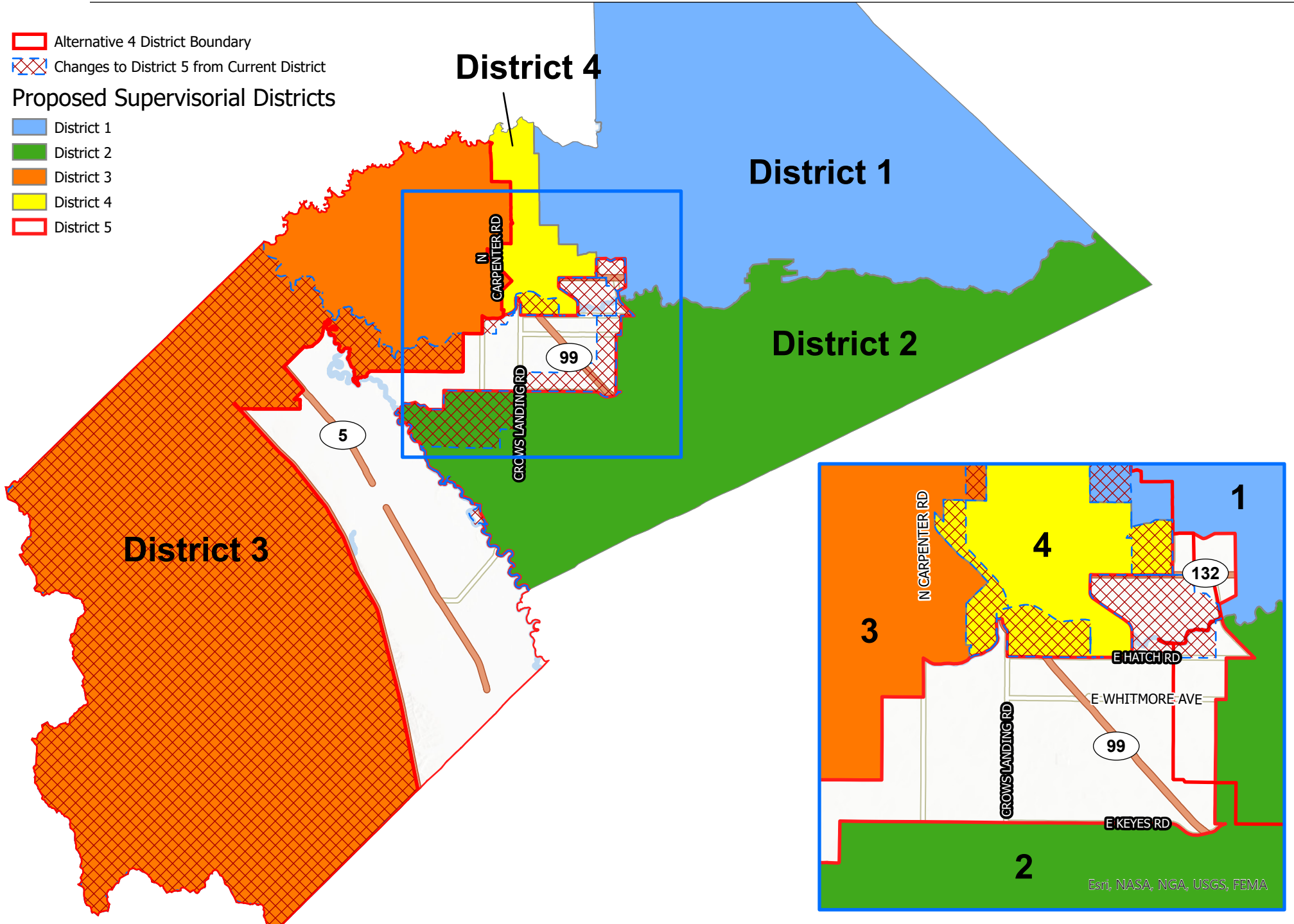
- Alternative 4 District Boundary
 - Changes to District 4 from Current District
- Proposed Supervisorial Districts**
- District 1
 - District 2
 - District 3
 - District 4
 - District 5



District 5 - Supervisorial Alternative Map 4



- Alternative 4 District Boundary
 - Changes to District 5 from Current District
- Proposed Supervisorial Districts**
- District 1
 - District 2
 - District 3
 - District 4
 - District 5



Supervisory Alternative Map 4

Census 2020 Population with Race/Ethnicity and Citizen Voting Age Population 2019 (CVAP)

Supervisory	Population	Population Difference to Target Population	CRITERIA #1		Hispanic	% of Hispanic	NH White	% of NH White	NH Asian	% of NH Asian	NH Black or African American	% of NH Black or African American	NH Native Hawaiian & Other Pacific Islander	% of NH Native Hawaiian & Other Pacific Islander	NH American Indian & Alaska Native	% NH American Indian & Alaska Native	
			% Deviation from Target Population	Population												NH	% of NH
District 1	110,439	-507	-0.46%	40,255	36.45%	53,675	48.60%	7,011	6.35%	2,557	2.32%	711	0.64%	477	0.43%	538	0.49%
District 2	111,180	234	0.21%	46,550	41.87%	51,265	46.11%	5,784	5.20%	1,676	1.51%	331	0.30%	543	0.49%	555	0.50%
District 3	105,522	-5,424	-4.89%	51,541	48.84%	35,337	33.49%	8,411	7.97%	3,637	3.45%	1,058	1.00%	507	0.48%	555	0.53%
District 4	112,400	1,454	1.31%	51,199	45.55%	44,173	39.30%	5,874	5.23%	3,604	3.21%	888	0.79%	679	0.60%	703	0.63%
District 5	115,189	4,243	3.82%	77,203	67.02%	24,168	20.98%	6,103	5.30%	3,066	2.66%	734	0.64%	438	0.38%	471	0.41%
Total Pop	554,730			266,748	48.09%	208,618	37.61%	33,183	5.98%	14,540	2.62%	3,722	0.67%	2,644	0.48%	2,822	0.51%

Supervisory	CVAP	CVAP % of Total Pop	Hispanic CVAP	CRITERIA #2		NH White CVAP	% of NH White CVAP	DOJ NH Asian CVAP	% of DOJ NH Asian CVAP	DOJ NH Black or African American CVAP	% of DOJ NH Black or African American CVAP	NH Native Hawaiian & Other Pacific Islander	% of NH Native Hawaiian & Other Pacific Islander	DOJ NH American Indian & Alaska Native	% DOJ NH American Indian & Alaska Native
				% of Hispanic CVAP	% of DOJ NH CVAP										
District 1	71,149	64.42%	18,848	26.49%	44,446	62.47%	4,382	6.16%	1,588	2.23%	538	0.76%	958	1.35%	
District 2	71,154	64.00%	20,119	28.28%	44,493	62.53%	3,774	5.30%	1,439	2.02%	240	0.34%	913	1.28%	
District 3	66,711	63.22%	23,815	35.70%	32,710	49.03%	5,133	7.69%	2,762	4.14%	813	1.22%	908	1.36%	
District 4	70,141	62.40%	23,181	33.05%	38,555	54.97%	3,619	5.16%	3,125	4.46%	395	0.56%	925	1.32%	
District 5	61,805	53.66%	33,566	54.31%	20,321	32.88%	3,160	5.11%	3,174	5.14%	444	0.72%	745	1.21%	
Total Pop	340,960	61.46%	119,529	35.06%	180,525	52.95%	20,068	5.89%	12,088	3.55%	2,430	0.71%	4,449	1.30%	

554,730 Stanislaus County total population
 110,946 Target Population for each Supervisorial District is the Total population (554,730) divided by the Total number of Supervisor Districts (5)