

Stanislaus County Department of Public Works 2023 Annual Report



Hickman Road Bridge over Tuolumne River

Table of Contents

Mission Vision Leadership	3
Letter from the Director	5
Administration	7
Finance	8
Human Resources	9
Roads and Bridges – Construction	10
Roads and Bridges – Design	20
Development Services	26
Morgan Shop	27
Roads – Maintenance and Operations	29
Stormwater	35
Survey	37
Traffic Engineering	38
Events	39
In Loving Memory of Collin Yerzy	42
Day of Remembrance in Honor of Collin	43
In Loving Memory of Deborah Hawkins	44
Board of Supervisors	45
Contact Information	46

Mission: Manage and improve infrastructure through safe and efficient use of resources and assets for the benefit of our Community.

Vision: Building Community through efficient stewardship of infrastructure and environment.

Leadership:

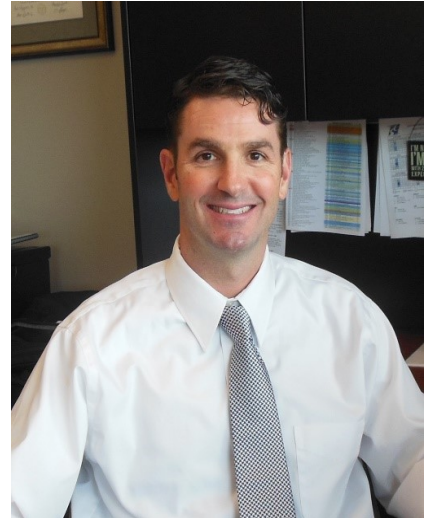
David Leamon
Director



Frederic Clark
Deputy Director,
Operations



Chris Brady
Deputy Director,
Development Services
and Special Projects



Sambath (Sam) Chrun
Deputy Director,
Engineering
5/2023



Tracie Madison
Senior Business
Manager



Andrew Malizia
Deputy Director,
Development Services,
Traffic and Special
Projects
11/2023

Leadership continued...

Farewell to Chris Brady, Deputy Director ~ Development Services and Special Projects

We are sad to see Chris go, but he's not going far. His role will be changing to contract employee. Chris will continue working on Special Projects, including ARPA, and the Building Community Infrastructure projects.

Chris Brady has been a key part of this department for approximately 15 years, started in Special Projects as an Associate Civil Engineer in 2008, then was promoted to Senior Civil Engineer in Construction Management in 2008. He then was promoted to Deputy Director in charge of Construction and Roads in 2014. He has rotated through the Deputy slots, doing an admirable job in every role he has been in.

Here are some Major Projects Chris had a key role in:

- Keyes Redevelopment Ph 1 and 2 – Construction Management
- Empire Redevelopment – Construction Management
- Claribel Road Widening – Construction Management
- Santa Fe Bridge – Design
- Hickman Road Bridge – Design
- Parklawn Sewer – Construction
- Airport Sewer – Design

Thanks Chris, for being a key member of this organization and its successes through the years. Wishing you nothing but the best in your next venture!

Tate Hoffman
Morgan Shop
Manager

Brian England
Roads
Superintendent



Introducing Andrew Malizia as the new Deputy Director of Development Services, Traffic and Special Projects ~ Effective November 2023 ~

Andrew has over 16 years of progressive civil engineering experience at Stanislaus County having started as a Senior Engineering Technician, promoted to Assistant Engineer, then Associate Engineer and has been in the County Traffic Division as a Senior Civil Engineer for 5 years.

Public Works is excited about this phase of Andrew's career and we know he will be successful in this role too.

Congrats Andrew!

Introducing Sambath (Sam) Chrun as the new Deputy Director of Engineering: Design, Construction and Survey ~ Effective May 2023 ~

Sam graduated from Cal Poly (San Luis Obispo) in 2004 with a degree in Civil Engineering and obtained his Civil PE in 2010. He practiced Civil/Structural Engineering from 2004-2014 in Sacramento, CA. Sam joined Stanislaus County in 2014 as an Associate Civil Engineer until 2016 when he departed to San Diego and served as a Project Manager for San Diego County.

Sam returned to work for Stanislaus County in 2021 as a Senior Civil Engineer and is now serving as Deputy Director. Congratulations on your promotion Sam, we wish you success in your new role!

Letter from the Director

Stanislaus County Department of Public Works

David Leamon, Director of Public Works

April 2024

To the Citizens of Stanislaus County, the Honorable Board of Supervisors and Chief Executive Officer Jody Hayes:

It is with great pride and reflection that I share the accomplishments and heartfelt moments from 2023 in our Annual Report. The past year has been one of resilience, innovation, and dedication from every member of our Public Works family.

Department Accomplishments

This year brought historic storms that tested the limits of our infrastructure and our team's resolve. Our crews answered the call with over **2,540 work orders**, a 60% increase over the previous year, showcasing our department's unwavering commitment to public safety and service.

We delivered critical infrastructure projects including major bridge replacements like **Crows Landing Road Bridge**, **Saint Francis Avenue Bridge**, and progress on the design and permitting for the **7th Street Bridge Replacement Project**. These investments not only enhance transportation safety but also reinforce our commitment to building a stronger future for Stanislaus County.

Our **Finance Division** managed funding for over 100 road-related projects and worked closely with FEMA to ensure reimbursement for storm-related expenses, while **Human Resources** overcame the loss of a valued team member and welcomed new staff to carry our mission forward.

Our **Roads Maintenance team** preserved over 121 miles of roadway and supported emergency operations during floods, while our **Morgan Shop** and **Stormwater Division** played vital roles in both daily operations and long-term planning.

Welcoming New Leadership

2023 also marked a pivotal year for leadership within the department. We welcomed **Andrew Malizia** as Deputy Director of Development Services, Traffic and Special Projects, and **Sambath (Sam) Chrun** as Deputy Director of Engineering. Both bring extensive experience, fresh ideas, and a steadfast commitment to excellence.

While we celebrated these advancements, we also bid farewell—though not goodbye—to **Chris Brady**, who continues to serve Public Works as a contract employee after 15 years of distinguished service. Chris was instrumental in delivering cornerstone projects like the Hickman Road Bridge and Parklawn Sewer improvements, and we are grateful for his continued contributions.

Remembering Our Own

This year, we experienced profound losses. We said goodbye to **Collin Michael Yerzy**, our Deputy Director of Roads and Construction. Collin's leadership and technical excellence were central to many of our largest projects, including the \$22 million Hickman Road Bridge Replacement. More than a colleague, Collin was a friend, a mentor, and a deeply respected leader.

We also mourned the loss of **Deborah June Hawkins**, whose kindness and dedication in Human Resources touched everyone in our department. Deborah's joyful spirit and compassionate service will be deeply missed.

Looking Forward

Despite the challenges, 2023 reminded us of the strength of our people, the importance of infrastructure, and the value of community. I extend my deepest gratitude to our team members, community partners, and the residents of Stanislaus County. Together, we have continued to fulfill our mission: *Managing and improving infrastructure through safe and efficient use of resources for the benefit of our community.*

Thank you for your continued support.

With appreciation,

David Leamon

Director of Public Works

Road Commissioner

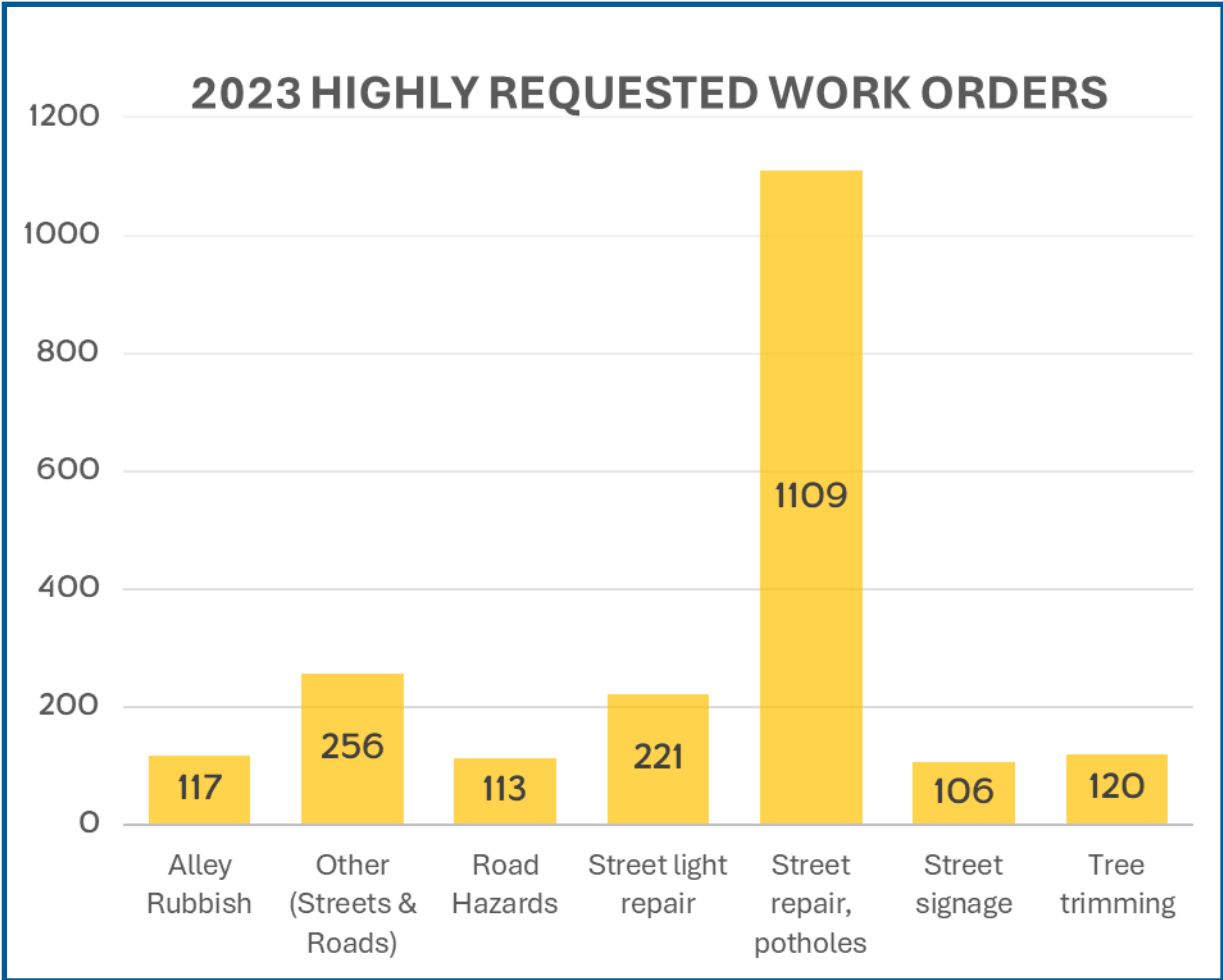
Stanislaus County Public Works

Administration

The 2023 storms proved to be historic in many ways, including surpassing some of our previous records for calls received. The Public Works Department received more than 2,540 requests, an increase of almost 60% from the previous year! Many of those work orders were received during and in the months subsequent to the storms.

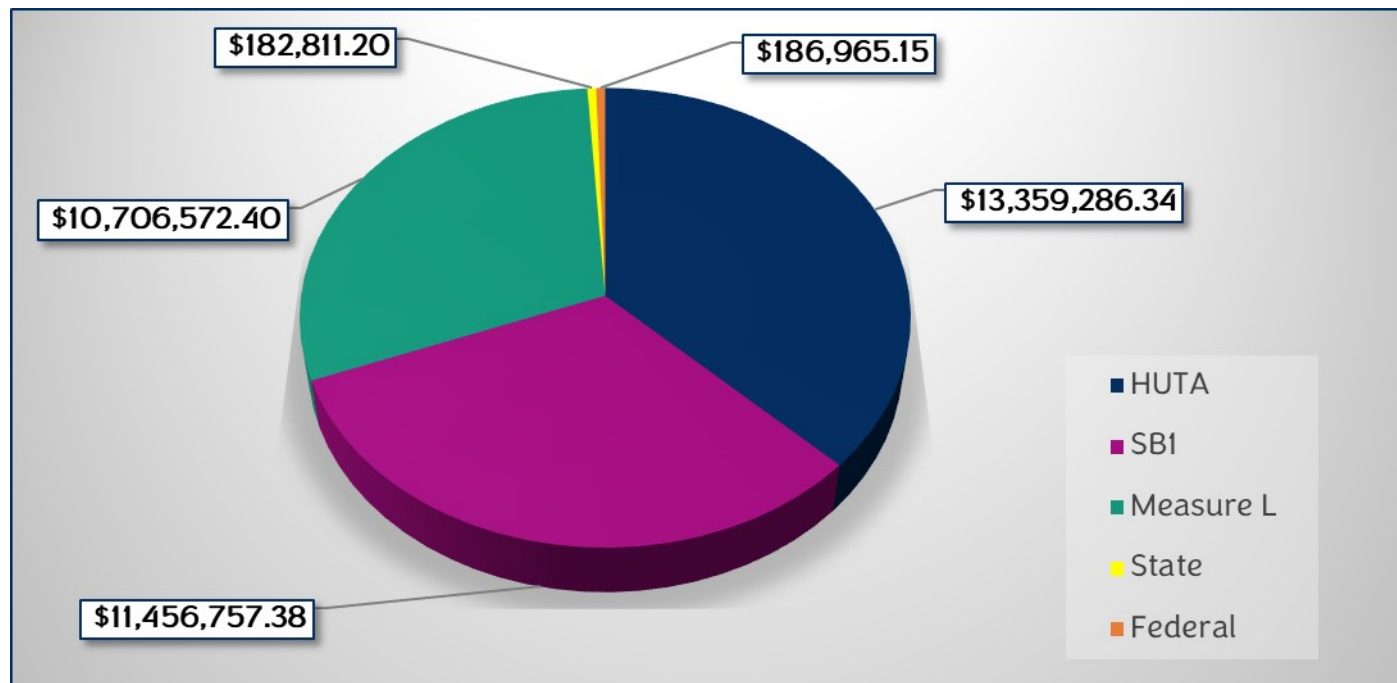
Admin staff contributed to the efficiency of emergency assistance being provided to customers and other Agencies and Departments within Stanislaus County during these unexpected events. They are the front line in receiving incoming California Highway Patrol (CHP) calls when there are accidents or other potential life-threatening road hazards that require urgent assistance from our PW crews. Examples of those calls are: assistance needed with road closures due to vehicle accident or spillage, flooding-related, Stop sign/street signage down and downed trees. Staff verify they've taken down accurate information and details pertinent to the call, submit the online request and contact Roads staff as needed to relay the information and ensure staff is onsite where needed.

In addition to assisting all customers, internal and external, the Admin staff of Public Works assist in planning and organizing the Department's many events throughout the year. Some of these events include: Quarterly Safety Meetings, National Public Works Week, Employee Appreciation and other special events.



Finance

Stanislaus County Public Works Department Revenues



“Beware of little expenses; a small leak will sink a great ship.” Benjamin Franklin

This phrase is a great reminder it's easy for seemingly insignificant expenses to add up to a significant amount and a warning to be mindful of small costs to avoid larger financial issues down the line. Despite the numerous financial tasks our Finance Team is responsible for, they keep this in mind while handling all duties associated with budgeting, payroll, and cost accounting. Throughout 2023 they oversaw the financial aspect for over 100 road-related projects. This includes assigning individual project numbers that staff use for tracking time spent working on each project. This facilitates reporting and billing at the time project is completed.

Despite the ongoing challenges to fill vacant positions and retain staff, the Finance division was able to ensure that the Department followed all County financial policies and safe guarded public funds. They also carried out the extensive process to follow up on claiming reimbursements for all storm-related expenses during the State of Emergency earlier this year. Special thanks to Tracie Madison and Frederic Clark for the time they've dedicated to gather this information and work with Federal Emergency Management Agency (FEMA) in this effort.

Human Resources

This year was challenging to say the least as we felt the absence and devastating loss of our dearest Deborah, which left an unimaginable void. Deborah handled many tasks including recruitments, onboarding, assisting employees with benefit questions, monitoring due dates for Department of Transportation (DOT) annual recertifications for Roads staff, and assisting internal/external customers in person and by phone.

We then faced the challenge of hiring and retaining Confidential Assistant III's (CA III) – Human Resources (HR) Staff. However, we closed out the 2023 year with two full-time and one part-time CA III, who are doing a great job trying to get our Department up to date with any pending items, as well as familiarizing themselves on the many additional tasks that come with keeping all Public Works Roads staff driving requirements and certifications up to date. They also ensure all staff are completing any assigned trainings and evaluations are completed in a timely manner to process all necessary paperwork. Welcome Keli, Corinne and Jessicah!

Despite the mentioned challenges, the Department was able to recruit **26 New Hires**. There were **6 Promotions**, two of which were promoted to become our newest Deputy Directors as mentioned previously in our Leadership section. It's always exciting to see staff promote within the Department and continue to grow in their respective careers.

Congratulations Wayne McConnell on your much deserved Retirement after 19 years of service!

HR staff also assist in coordinating our Quarterly Safety Meetings, and prepare Service Awards for those occasions. Staff at Public Works take Safety very seriously and we all do our best to look out for potential safety hazards for ourselves and our coworkers and implement preventative measures when needed. We held a total of four All-Department Safety Meetings during this year and also completed our required Fire Drill trainings to ensure all new staff were familiarized with evacuation procedures.

Thank you for your continued service to Public Works as well as to our Community!

Service Awards 2023

5 Years: Keli Silva, Ignacio Lopez, Michael Rodriguez

10 Years: Patrick Brunn, James Spoonemore

15 Years: David Leamon, Wes Eslinger, Denis Bazyuk, Andrew Malizia, Chris Brady, Marco Valadez, Jason Lundquist, Tyson Teixeira

20 Years: Eric Moore

25 Years: Phil Harley

30 Years: Scott Pendleton



Roads and Bridges - Construction

Crows Landing Road Bridge over San Joaquin River

Project improvements include: Remove the existing structurally deficient bridge and replace with a new bridge designed to current structural and geometric standards. The replacement structure will consist of a 723-foot-long five-span, cast-in-place post-tensioned box girder bridge. The new structure will also provide for two 12-foot travel lanes, a 12-foot center median/turn lane, and two four-foot shoulders as well as new safety barriers.

Purpose: Replace the current bridge as it is deemed “Structurally Deficient” and vulnerable to damage if a significant flood event occurred on the San Joaquin River. The bridge is also on the Local Seismic Safety Retrofit Program (LSSRP) list due to seismic deficiencies and is listed as functionally obsolete. Replacing the bridge will enhance safety for interregional truck and agricultural traffic.

Setbacks: During the winter of 2022/2023 many California Counties, including Stanislaus County were affected by the storms causing severe flooding damages. On January 14, 2023, President Biden approved the Major Disaster Declaration for the affected Counties. The San Joaquin (SJ) River is 366 miles long with a drainage basin of 156,000 square miles. The river flooded and this severely affected the Project by submerging the entire work site for approximately six months from January to July 2023. Change orders were needed to make several repairs due to damages caused by the storms. Later in the year there was once again a significant precipitation in the SJ River basin and the SJ River inundated the construction site yet again. This caused additional damage to the newly constructed approach roadway after the bridge structure was substantially completed. Additional flood emergency work and flood damage restoration was required and performed. Due to these setbacks, completion is now anticipated for Summer 2024.

Funding: This project is funded with Federal Highway Bridge Program (HBP), LSSRP, and Senate Bill 1 (SB1) Road Maintenance and Rehabilitation Account (RMRA) funds. Public Works has also requested and expects to receive additional construction funds from Caltrans for repairs associated with flood damages and other project overruns.



Crows Landing Road Bridge continued...



Crows Landing Road Bridge continued...



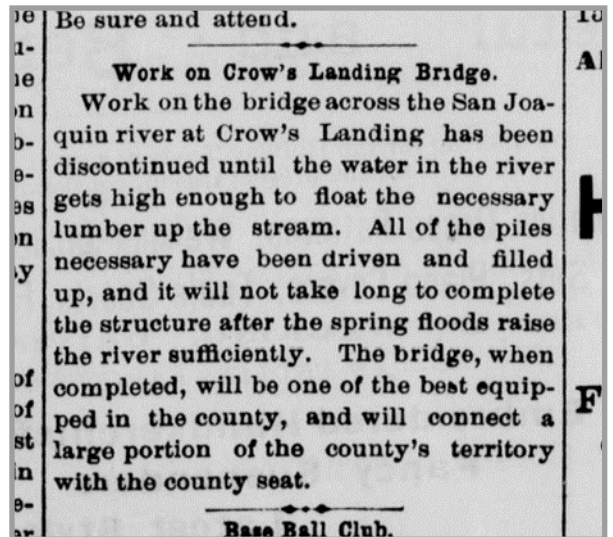
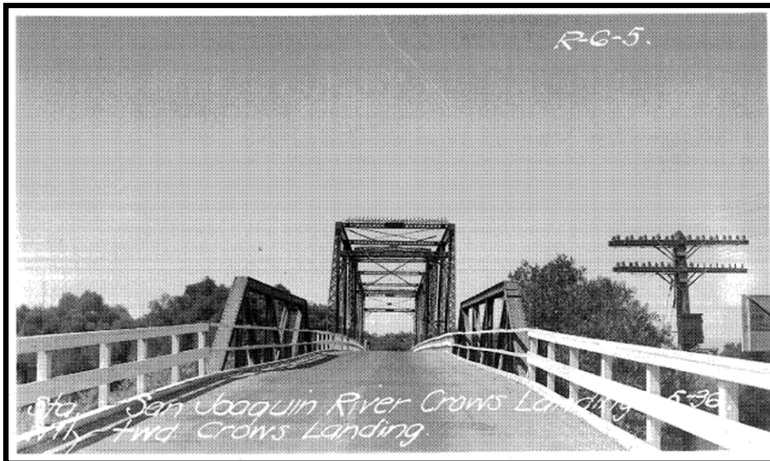
Crows Landing Road Bridge – A bit of history

First Bridge was constructed in 1886 for a total cost of \$35,196.

05/13/1887: The Board of Supervisors accepted the bridge this week and the first heavy load went over the bridge, 200 cattle, thus proving the specified weight capacity of a minimum of 1,000 lbs. per running foot. After the cattle crossed a steam ship towing a barge were let through, demonstrating that the channel was deep enough to allow any steamer to safely pass through the bridge.



1936 Pictures



Crows Landing Road Bridge – A bit of history continued...

1948

<p>FORM BD-24, EST. 5917 64464 10-46 2M 100 TO PKG SPO</p>	<p>BRIDGE No. <u>38C-10</u> SHEET <u>-2-</u> DATE <u>7-9-48</u></p>
--	---

CONDITION OF STRUCTURE (Continued):

The surfacing is very rough and there is considerable impact on the steel swing span even by light traffic.

The deck has been patched in numerous places using old second hand 4" stringers for planks. Many of them are loose and rattle under traffic.

The old 1"x4" laminated deck is in very poor condition and in several places along the edges of the roadway it has punched through between the first and second stringer lines. There is danger of a heavy vehicle falling through one of these holes and knocking out the pony trusses. However it was observed that traffic does attempt to pass on the bridge because of the narrow roadway width.

Second Bridge was constructed in 1949 for a total cost of \$172,023.

New Bridge Near Crows Landing Is Completed

Work was completed yesterday on the new 670 foot bridge over the San Joaquin River near Crows Landing.

Charles D. Hof, county resident engineer in charge of construction, said today reflector guide posts soon will be placed at intervals along the sides of the 3,030 foot approaches.

Cost \$172,023


The cost of the bridge, of reinforced concrete on steel girders, was \$172,023. The approaches, which eliminate hazardous curves at either end of the former bridge, added an additional \$34,331. Funds were made available under the federal government's secondary project aid programs with a matching sum provided by the state. Construction began July 22, 1948.

The bridge is 26 feet wide. The old one was 18 feet. The new span is 30 feet above the high water mark. It incorporates an 82 foot removable span in the center. In the event the river must be dredged this section easily could be removed, Hof said.

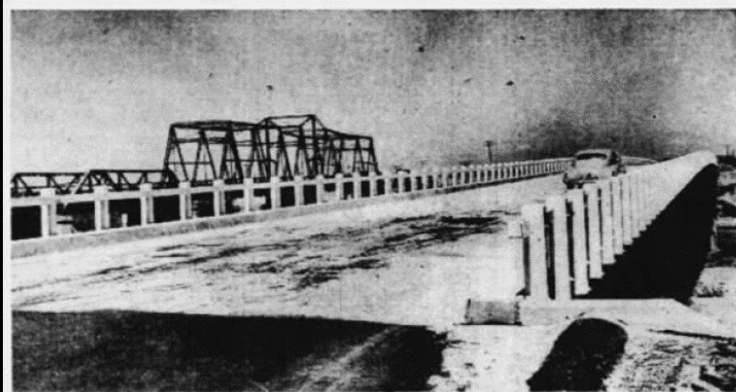
Old One Built In 1888

The old bridge was erected in 1888. John Nemitz, the former bridge tender, still has in his possession the hand crank used to open the 246 foot swing span. Under state regulation the structure must be razed within one year after completion of the new one. The old steel truss bridge had an impaired clearance and a posted weight limit of 12 tons. The new structure is not posted for weight limitations.

THE MODESTO BEE, FRIDAY, AUGUST 19, 1949



OLD AND THE NEW—The steel struts of the old Crows Landing bridge at the left rise in marked contrast to the sleek, modern bridge just completed. An automobile on the new bridge speeds easily and safely across since the former dangerous and curved approaches have been straightened. The width of the bridge, 26 feet, allows autos and trucks to pass each other safely at high speeds.



MODERN DESIGN — Spanning the San Joaquin River at a scenic location is the new Crows Landing bridge. In the left background may be seen part of the old, narrow bridge. The new structure is 670 feet long, and stands 30 feet above the river.—Bee Photos.

Crows Landing Road Bridge – A bit of history continued...

Third Bridge Opened in 2023
As-bid \$25,711,703 (not final cost).



Saint Francis Avenue Bridge Replacement Project

Project improvements include: Remove and replace a structurally deficient bridge within Stanislaus County.

Purpose: Replace the current bridge as it is deemed “Structurally Deficient” and has a sufficiency rating of 55.1 on a scale of 1 to 100 due to the following deficiencies: it lacks the structural capacity to meet current bridge design loading standards; it is 98 years old and has exceeded its design life of 50 to 75 years; it provides insufficient deck width for current geometric standards; the bridge railings do not meet current crash standards; and there is no guard railing or crash cushions at barrier corners on roadway approaches.

Setbacks: There were unforeseen circumstances related to irrigation pipe conflicts, therefore requiring a redesigned final grade profile of the bridge and road approaches. Additionally, residents in the community requested railing be installed at the edge of the box culvert.

Funding: This project is completely funded with Federal HBP funds and toll credits.



Saint Francis Avenue Bridge Replacement Project continued...



The Saint Francis Avenue Bridge is located north of Modesto just west of McHenry Avenue (State Route 108). Saint Francis Avenue connects McHenry Avenue on the east side of the bridge to Carver Road on the west. The bridge provides a crossing over the Modesto Irrigation District canal to a group of homes on the southwest corner of the bridge and to other rural residences and agricultural properties west of the bridge.

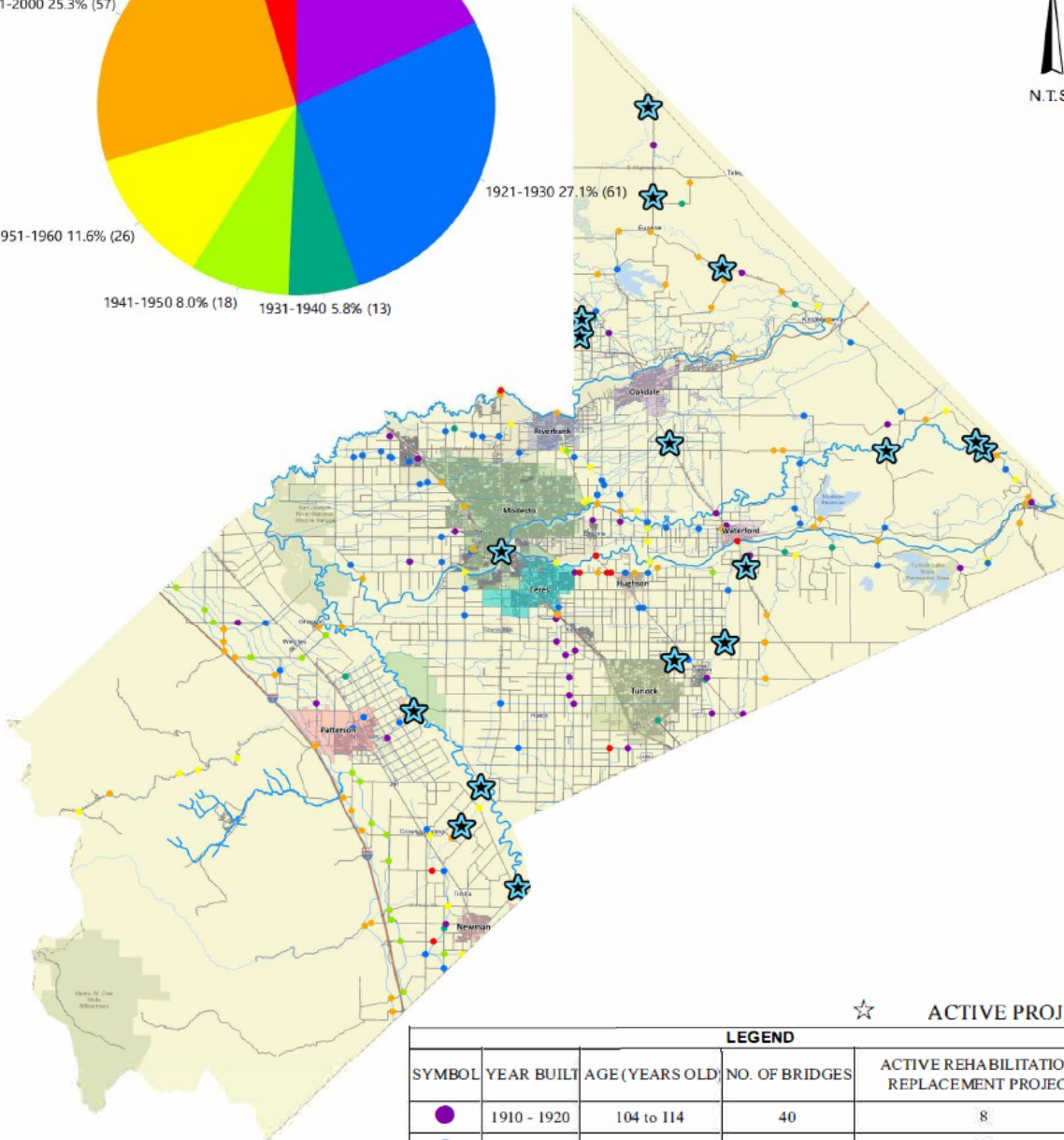
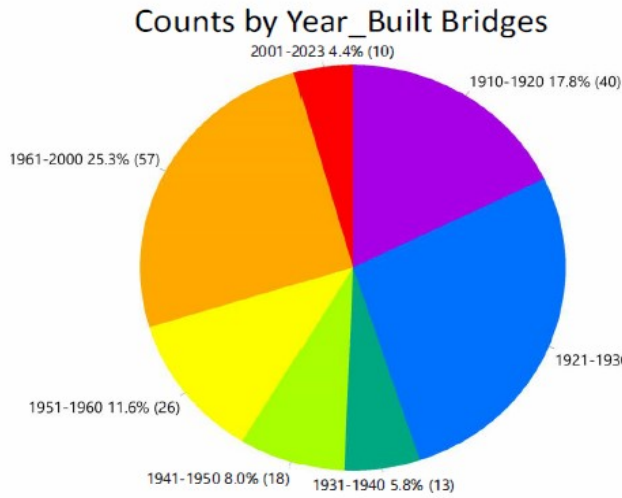


Saint Francis Avenue Bridge Replacement Project continued...





STANISLAUS COUNTY PUBLIC WORKS BRIDGES - BY YEAR BUILT



☆ ACTIVE PROJECT

LEGEND				
SYMBOL	YEAR BUILT	AGE (YEARS OLD)	NO. OF BRIDGES	ACTIVE REHABILITATION & REPLACEMENT PROJECTS
●	1910 - 1920	104 to 114	40	8
●	1921 - 1930	94 to 103	61	3
●	1931 - 1940	84 to 93	13	1
●	1941 - 1950	74 to 83	18	1
●	1951 - 1960	64 to 73	26	1
●	1961 - 2000	24 to 63	57	2
●	2001 - 2023	1 to 23	10	1

TOTAL BRIDGES 225 17

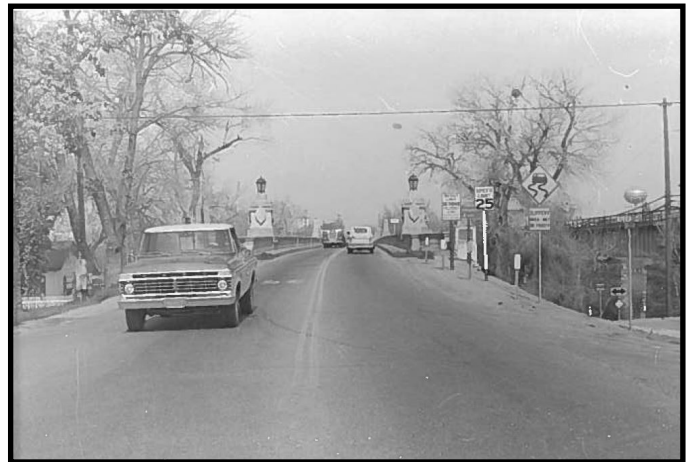
Roads and Bridges - Design

7th Street Bridge Replacement Project

Project improvements include: Replacement of the existing bridge, safety improvements for motorists, pedestrians, and bicyclists, curb ramps, raised center median/refuge, street lighting, and incidental roadway resurfacing. It'll also include modifications at the intersections of 7th and "B" Streets at Tuolumne Boulevard and Crows Landing Road at 7th Street.

Purpose: Stanislaus County Department of Public Works, in cooperation with the City of Modesto, California Department of Transportation, and Federal Highway Administration, will replace the historic bridge to meet standards for seismic events, hydraulics, and improved mobility.

Funding: The Project is partly funded with Federal HBP funds. The remaining amount and any ineligible costs are a local match and will be shared with the City of Modesto as defined in an Amended and Restated Memorandum of Agreement. The County's share of the local match will utilize SB1 funds.



Crabtree Road Bridge over Dry Creek Replacement Project

Project improvements include: Replace the existing bridge with a new bridge that will accommodate two 10-foot lanes with a two-foot shoulder on either side. The proposed barrier rails will meet current standards and will provide bicycle railings on either side of the bridge.

Purpose: To bring the existing bridge up to standards, it currently received a sufficiency rating (SR) of 39.6 (under 50 is eligible for replacement). Also to reduce the roadway curvature and provide for a safer traffic alignment.

Funding: This bridge is eligible for replacement under the Federal Highway Administrations (FHWA) HBP and will be funded at 100% federal funding, using toll credits in-lieu of a local match.



Hills Ferry Road Bridge Replacement Project

Project improvements include: Realign Hills Ferry Road by shifting the centerline, and replace the existing bridge with a new two-lane crossing approximately 750 feet in length that will accommodate a usable roadway width of approximately 36 feet (two: six-foot shoulder, 12-foot lanes), provide adequate storm drain runoff control, erosion abatement, liquefaction prevention, approach roadway modification and utility adjustments.

Purpose: To replace the existing seismically deficient bridge that was built in 1961.

Funding: This bridge is eligible for replacement under FHWA HBP, supplemented with LSSRP funds and matched with local dollars.



Kilburn Road Bridge over Orestimba Creek Replacement Project

Project improvements include: Bridge structural replacement, approach roadway modification, improve the alignment of the bridge and its connections to the tangent stretches of Kilburn Road, provide adequate storm drain runoff control, erosion abatement, liquefaction prevention, utility adjustments.

Purpose: To improve road safety by replacing the existing structurally deficient bridge constructed in 1910 and moved to it's current location in 1918.

Funding: This project is funded in it's entirety by Federal HBP funds, and the bridge has been programmed with toll credits.



Las Palmas Avenue over San Joaquin River Bridge Project

Project improvements include: Preventive maintenance of the bridge, liquefaction prevention, lateral spreading prevention, remove the corroded sections and install new supplemental grouted steel column/pile encasements around the existing steel casings at Pier 4 through Pier 8, which will both strengthen the piles and protect them from further corrosion.

Purpose: To perform preventive maintenance of the bridge which is considered scour critical and also has multiple vulnerabilities that could potentially collapse the bridge. The primary goal of the maintenance activity is to reinforce corroded sections of the existing bridge columns to extend the service life of the bridge and enhance safety.

Funding: This bridge is eligible for retrofit under FHWA HBP with a local match.

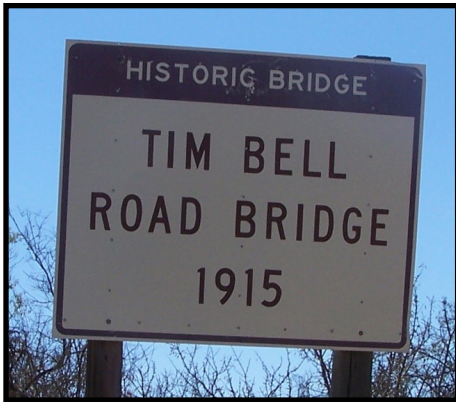


Tim Bell over Dry Creek Bridge Replacement Project

Project improvements include: Construct a new bridge downstream of the existing bridge to improve sight distance, remove the existing “s-curve”, provide for a safe design speed, and provide a structure that spans the 100-year floodplain of Dry Creek. The new, two-lane bridge will have a 26-foot clear deck width, and a guard rail will extend along the entire length of the bridge and road approaches on both sides of the Tim Bell Road. The Project will also include approximately 920 feet of road improvements on both north and south sides of the bridge.

Purpose: To replace the existing bridge built in 1915 as it is a key arterial highway in this part of the County due to the limited number of roads in this area.

Funding: This project is funded by the Federal HBP and bridge toll credits.



Tim Bell Road extends north-south connecting State Route 132 on the south with Warnerville Road on the north.

The Bridge was built in 1915, and the timber deck was replaced with a galvanized corrugated steel deck in 1979. The structure consists of a single reinforced concrete arch with timber spandrels and timber approach spans and carries traffic across Dry Creek.

Development Services

What is the purpose of a Transportation Permit?

The annual blanket and daily transportation permits' purpose is to enable the County to regulate movement of oversize loads over County bridges and roads in order to insure vehicle safety and to protect County bridges and roads.

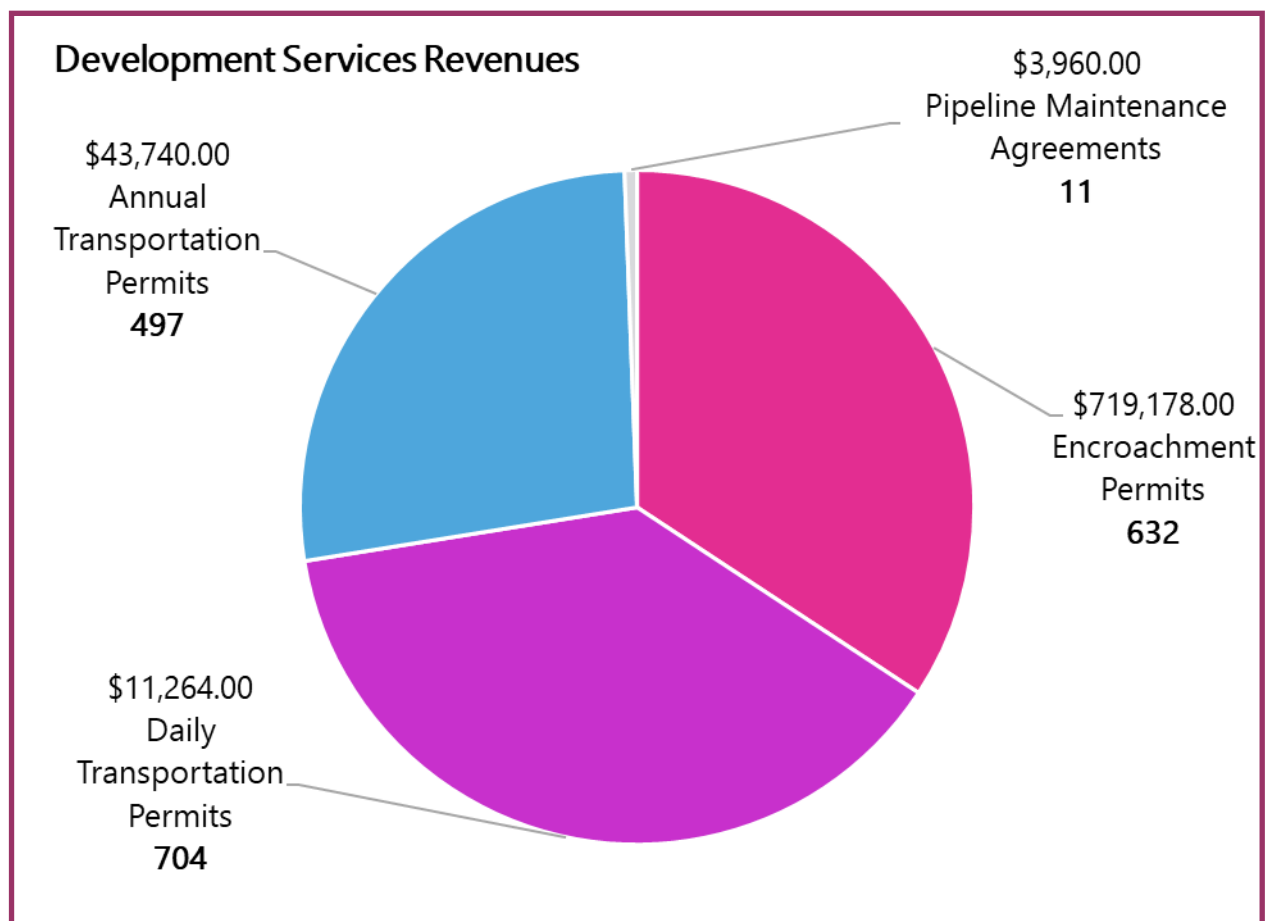
Issuing the permit assures that oversize loads are moved over a route with bridges and roads that can handle the weight and dimension requirements for the load, and that also addresses safety considerations unique to the assigned route.

When is a Transportation Permit Required?

A daily transportation permit is required whenever movement over County bridges and roads falls within the following criteria:

- The truck, truck and trailer, vehicle, or vehicle and trailer are over the legal size defined in California Vehicle Code Division 15.
- The load is over the legal size in terms of height, width, length, and/or weight as defined in California Vehicle Code Division 15.

An annual blanket transportation permit can be obtained and used in lieu of a daily transportation permit along routes over County bridges and roads that can handle the Caltrans rated load specified on the permit.



Morgan Shop

Shop staff provide support to other departments as needed and ensure each piece of equipment they service receives quality maintenance so customers can do their jobs effectively. Staff also assist in procuring new equipment for Stanislaus County Public Works. This is vital for our Roads & Bridges Division to complete work orders and construction projects as well as to provide emergency services in a timely manner.



Rented a large water pump to help mitigate flooding on the roads.



Purchased a Schwarze Regenerative Air Street Sweeper for Roads.



Purchased (1) new Vac Con truck for Roads storm drain cleaning process.



Purchased (1) one new Ford Maverick for our Encroachment Inspectors.



Purchased (1) new Ford F150 to be assigned to Roads Superintendent.



Purchased a new Rosco power broom, used to clean road hazards and sweep extra rock off the road during CHIP season.



During the storms and State of Emergency, Morgan Shop staff assisted residents of the Cat Fish Camp, located off of Crows Landing Road with RV removal due to cresting river heights.



The old asphalt here is the original Crows Landing Road that went to the long gone turntable bridge!

Roads - Maintenance and Operations

In 2023 Road Operations was able to accomplish the following:

- 121 Miles of roadway chipped: 13,200 tons of chip rock was used, 1,785 tons of oil used
- 213 Centerline miles striped
- 384 Edge Line miles striped
- 77 Thermal Stop Legends marked

Road Operations Staff are also called upon in emergency situations, such as the historic storms that occurred in 2023. Roads Crews assisted other County Departments and Agencies such as the Fire and Sheriff's Departments in various ways, including: delivering sandbags, evacuation efforts, and placing cement barricades for road closures and flood mitigation. The following pages show a few of the flooded/affected areas where crews provided assistance, including: Crows Landing Bridge area, Dunton and Grayson Road, Diablo Grande and Del Puerto Canyon.



Dunton Road



Grayson Road



Diablo Grande



Slope Failure and Debris in Roadway

Location: 1.75 miles west of I-5

Roads Crew worked diligently to clear the road, stabilize the slope and ensure road was once again safe for travel.

Our Roads & Bridges staff risk their lives every day as they work within the right-of-way to repair the roadways and eliminate immediate threats to lives, public health and safety. They also eliminate threats of significant damage to improved public property. Many times staff perform this work under poor weather conditions, including storms, extreme cold and heat.

Thank you for all the hard work you do each day!

Del Puerto Canyon



Roadway Cracks and Damage

Location: 13522 Del Puerto Canyon Road, about 13 miles west of I-5

After winter storms, roadway cracks (ranging from .5 inches (in.) to 3 in.) and vertical settlement was discovered extending across both lanes of traffic. Culvert pulled away from the drop inlet due to slope movement. The length of damage extended to approximately 250 feet. Permanent restoration was necessary and accomplished by removing the existing roadway structural section and fill material, constructing a new roadway section and installing new drainage infrastructure.



2023 Chip Seal–Prep



**YOUR TAX DOLLARS
AT WORK**

2023 Chip Seal



Stormwater

Implementation of the State Water Resources Control Board (SWRCB) 2022 *Construction General Permit (CGP)* became effective on September 1, 2023, replacing the 2009 CGP. Existing and new projects disturbing one or more acres or part of a larger common plan of development are subject to the 2022 CGP requirements with a two-year regulatory transition period.

Key changes include: distinct Qualified Stormwater Pollution Prevention Plan (SWPPP) Developer and Practitioner (QSD and QSP) responsibilities, establish Qualifying Precipitation Events (QPEs), increase water quality sampling and storm event monitoring, increase reporting requirements, and update the best management practices (BMPs).

Stanislaus County participates in the Delta Regional Monitoring Program (Delta RMP) to track and document the effectiveness of beneficial use protection and restoration efforts through comprehensive monitoring of water quality constituents and their effects in the Delta. Monitoring projects include mercury, nutrient studies, pesticides and toxicity studies, and contaminants of emerging concern.

Dry weather monitoring and annual illicit discharge field investigations were performed at the County's nine priority outfalls. Data obtained from this monitoring effort will be used to identify and prioritize non-stormwater water quality issues and focus efforts on the areas of greatest necessity.

As we bid farewell to Dhyon Gilton as Stormwater Program Manager, we do so with immense gratitude and respect. Dhyon developed the stormwater program that not only met compliance standards but set a benchmark for environmental stewardship. Her efforts in this role improved water quality, increased community awareness, and implemented solutions that have safeguarded our natural resources. Whether through public outreach, infrastructure improvements, or policy development, her contributions have left an indelible legacy that will continue to benefit our County, our environment, and our future.

We are pleased to welcome **Amber Minami** as the new Stormwater Program Manager. She brings over 15 years of public service experience in water and construction. Amber has a BS in Geological Sciences, has worked for Stanislaus County since 2007, and joined the Public Works Department in 2020. Congratulations Amber!

2023 Flood Control Efforts

Staff continued to work on the proposed railroad bridge over the Tuolumne River. There were meetings with the City of Modesto to discuss Building Resilient Infrastructure and Communities (BRIC), possible funding for flood prevention, and the Carpenter Road Bridge over the Tuolumne River.

Staff also collaborated with California Department of Water Resources (DWR) and Federal Emergency Management Agency (FEMA) regarding Tuolumne River Flood Reduction modeling and capacity increase.

Provided assistance regarding Modesto's Grant application for relocation expenses i.e. sewer treatment plant.

Flood Board adopted 2022 Central Valley Flood Protection Plan (CVFPP). Staff conducted meetings with U.S. Corps of Engineers regarding Non-Structural flood improvements.



Survey

In 2023, it was business as usual for the County Surveyors office. Our daily tasks vary from moment to moment as we strive to deliver quality service across the County. This includes customer service at the counter and by phone. We provide record research for our constituents, for private firms and for other public agencies. We keep busy archiving maps, deeds and corner records and indexing these documents in Geographic Information Systems (GIS).

We're often asked to determine the legality of parcels in compliance with the Subdivision Map Act. A licensed professional surveyor is uniquely authorized to make determinations on the information shown within the descriptions of real property. So, our expertise with writing legal descriptions means we are continuously reviewing Road Deeds, Construction Easements, title reports, property deeds and Lot Line Adjustments. Annexations need to be reviewed for compliance with State Board of Equalization. Our office assists both the Engineering Design Team and the Encroachment Inspectors. As a result, our field survey crew is always busy performing topographical surveys and right-of-way boundary surveys.

Long term tasks include the maintenance of the Public Land Survey System and the monitoring of monument preservation during construction projects. Planning for the future of the Department is essential, so we try to participate on interview panels whenever possible. To keep up with technology, our team goes through regular software training for both field and office purposes. A unique survey request that elevated our technical knowledge came from the Stanislaus County Department of Parks and Recreation. We were called upon to survey the water monitoring wells at Modesto and Woodward reservoirs. This unique report was prepared in compliance with the standards set by the California State Water Resources Control Board. And of course, the year will always be remembered for the all-hands-on-deck response to the floods in March of 2023. A special thanks to Michael and Dave who stepped up and volunteered for after-hours duties above and beyond their regular responsibilities. Great job guys!

In 2023, we also reviewed for approval:

- 34 Lot line adjustments
- 54 Records of Survey
- 5 Certificates of Compliance
- 11 Parcel Maps and Final Maps
- 178 Corner Records



Traffic Engineering

The Traffic Engineering division was busy during the 2023 year. In addition to supporting the day to day Operations of the Department, staff also assisted the Stanislaus County Office of Emergency Services (OES) during the historic storms alongside other Stanislaus County Departments. Staff is always looking for ways to improve efficiency within processes and procedures that directly impact how quickly the Department can respond during emergency situations. An example of this, PW Traffic division collaborated with Information Technology Central (ITC) technicians to update the Department website and create a link for Road Closures during Flood Events within Stanislaus County. This allows the public to easily access a list of current Road Closures and also view it within the GIS map to plan their route/commute accordingly.

Traffic Engineering also assists customers with questions and concerns in person and by phone regarding various topics such as: No Parking Zones, Speed Limit Requests, Speed Zones, Stop Sign Requests, Traffic Control Signing, Traffic Delay Notifications and Parade Permit Applications. Every single request takes time to assess, and if necessary perform a traffic study to meet the needs of our customers and above all promote safety on all of our County maintained roads. These are just a few of the many tasks our Traffic Engineering Division oversees throughout each year. We appreciate your hard work and dedication to ensure everything is working properly, and the effort placed in maintaining a great working relationship and promoting collaboration with other County Departments as well as outside Agencies.

We'd like to welcome **Jose Perez** to the Traffic Engineering Division! As of August 2023, Jose was promoted to Senior Engineering Technician. Jose started out with the Department as an Engineering Aide and has assisted with many essential tasks including creating Standard Operating Procedures (SOPs) for County Service Areas (CSA), as well as the huge undertaking of transferring files from paper to digital format. Jose has also assisted our Development Services division with Encroachment and Transportation Permits, which will surely help him out in his new role when reviewing Traffic Control Plans for said Permits. Congratulations Jose!



Events

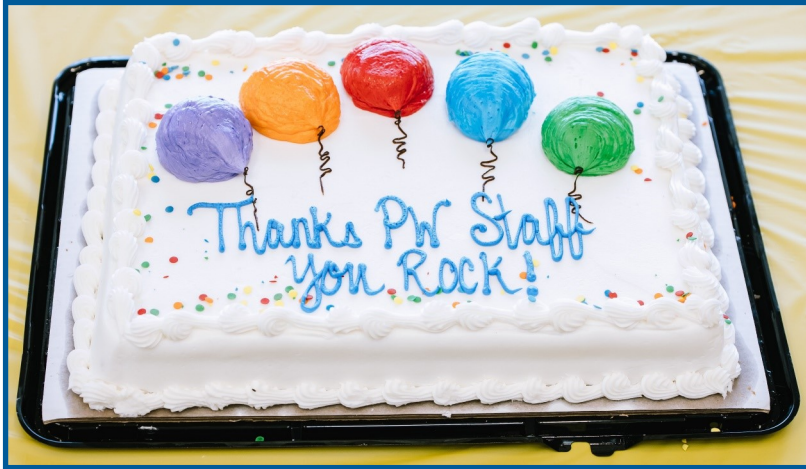
March 2023, Storm Debrief – State of Emergency: Flooding



PW Staff donated items for the
Department of Child Support Services
Backpack Drive July 2023



Employee Appreciation Luncheon



Employee Appreciation Luncheon continued...



In Loving Memory of Collin Michael Yerzy

Hickman Road Bridge Ribbon Cutting

July 15, 1984–January 26, 2023

November 22, 2021



Collin graduated with a Civil Engineering degree from University of the Pacific, Stockton in 2007. After graduation he began his tenure with the City of Modesto in their Water Engineering group, Utilities Department. After working for four years designing tanks, pump stations, wells and water lines, Collin transferred to Construction Administration. While there, he was promoted to Senior Civil Engineer and the Resident Engineer responsible for capital projects (streets, parks, trails, water and wastewater utilities, traffic signal project) until accepting his new position as Deputy Director of Roads and Construction with Stanislaus County Department of Public Works in March 2019.

Collin joined the County with over 10 years of public agency experience and over 15 years total in construction management and engineering, and immediately made an impact. Collin helped deliver several large capital projects during his time with the County, one being the Hickman Road Bridge Replacement Project which cost a total of \$22 million, and the Schell Road Bridge over the South San Joaquin Irrigation District Main Canal Project, a County-built pre-fabricated bridge over the canal which replaced a weight-restricted wood-stringer-bridge with a modern steel-bridge with a concrete deck for a total cost of \$450,000.

Collin leaves behind his wife, Margaret of 15 years, and two sons, Zachary and Christian. He enjoyed being outdoors, camping and fishing and also learning new things. He was well known, well loved and appreciated here at Public Works and is missed greatly.

Day of Remembrance in Honor of Collin



Schell Road Bridge Project

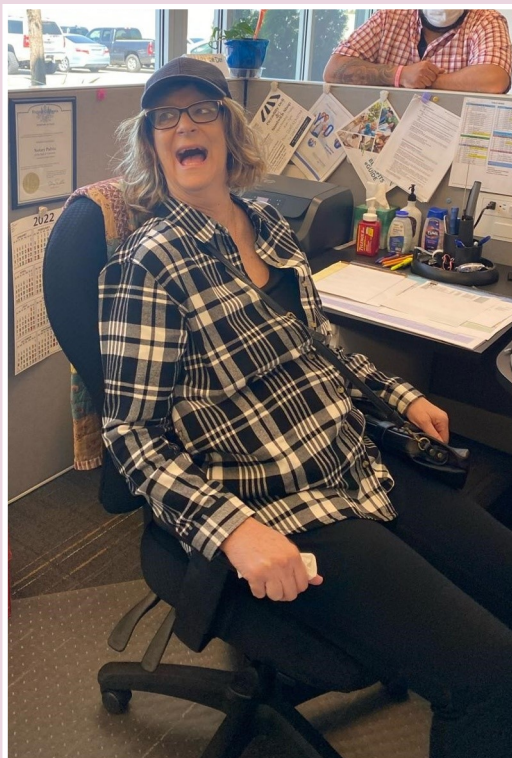


In Loving Memory of Deborah June Hawkins

June 14, 1961–November 12, 2023

For those of us who knew and had the privilege of working with Deborah, you couldn't help but love her, we miss her dearly. She always greeted you with a smile and helped with whatever was needed. In addition to her many Confidential Assistant III–HR tasks, Deborah also assisted the Department as a Certified Notary. She also assisted customers in person and by phone. Deborah worked at PW from 2015 to 2023.

The most important thing in her life was her children and family. Some of her favorite pastimes were reading, photography, writing and journaling.



Board of Supervisors

District 1

Buck Condit



District 2

Vito Chiesa



District 3

Terry Withrow



District 4

Mani Grewal

**Vice-
Chairman**



District 5

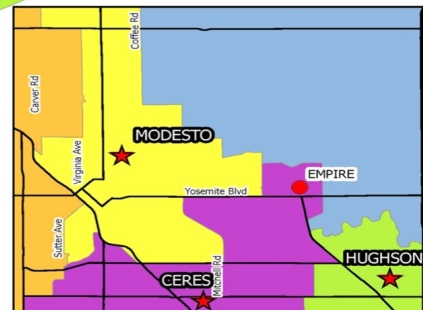
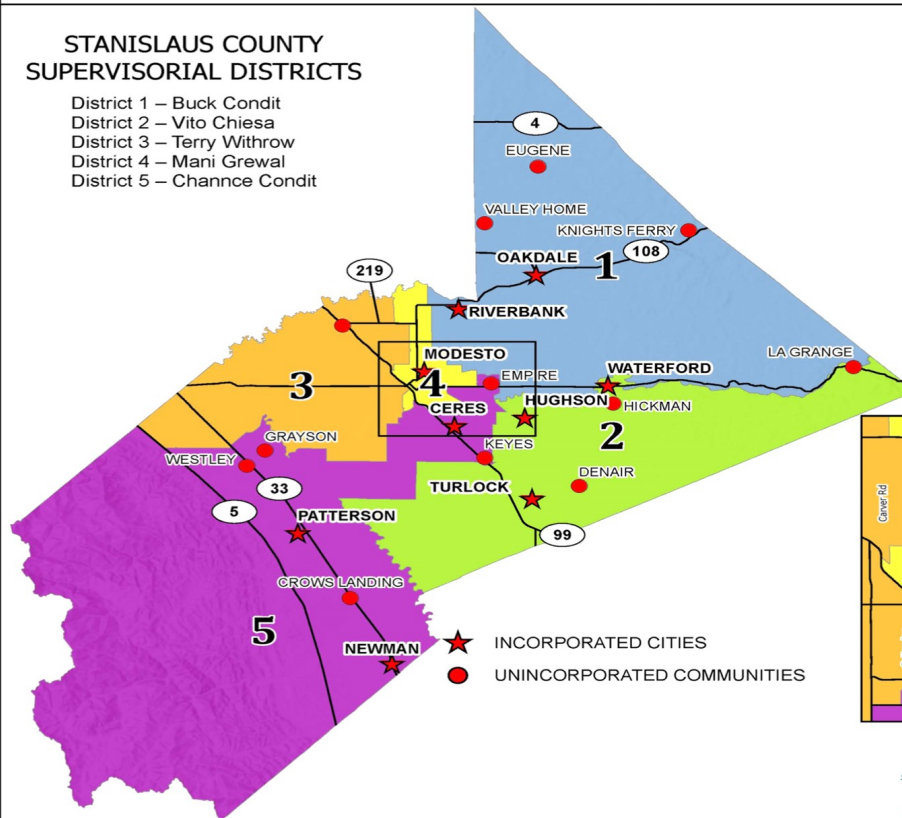
Channce Condit

Chairman



STANISLAUS COUNTY SUPERVISORIAL DISTRICTS

District 1 – Buck Condit
District 2 – Vito Chiesa
District 3 – Terry Withrow
District 4 – Mani Grewal
District 5 – Channce Condit



ENLARGEMENT

Date: 4/11/2023

Information Technology Central
Geographic Information Services
801 11th St. Modesto, CA 95354

Contact Information



1716 Morgan Road
Modesto, CA 95358
(209) 525-4130 Phone
(209) 541-2505 Fax

- ◆ Administration
- ◆ Construction Engineering
- ◆ County Surveyor's Office
 - ◆ Design Engineering
 - ◆ Finance
- ◆ Traffic Engineering
 - ◆ Morgan Shop
- ◆ Roads and Bridges

www.stancounty.com/publicworks

You may also contact us by submitting your questions or concerns online
at: www.stancounty.com/customercenter or

Stanislaus County's Assistance Hotline at 1 (877) 2Assist / 1 (877) 227-7478

1010 10th Street
Suite 4204
Modesto, CA 95354
(209) 525-4130 Phone
(209) 525-6507 Fax

- ◆ Development Services
- ◆ Encroachment Permits
- ◆ Transportation Permits

