

Stanislaus County Public Works

Annual Report 2014



Inside this issue:

| | |
|---|----|
| Leadership, Mission, Vision | 2 |
| Administration Division | 3 |
| North County Corridor | 4 |
| Geographic Information System (GIS) | 6 |
| Development Services | 7 |
| Traffic Engineering | 8 |
| Construction Engineering | 9 |
| Roads and Bridges | 16 |
| Morgan Shop | 18 |
| New Year, New Shop! | 22 |
| Design Engineering | 23 |
| Transit | 26 |
| Survey | 29 |
| Storm Watch! | 30 |
| Quarterly Safety Meetings | 31 |
| Cultural Awareness Week/ United Way/OCC | 32 |
| Events | 33 |
| Public Works Week | 34 |
| Employee Appreciation | 35 |
| Board of Supervisors | 36 |
| Contact | 37 |

LEADERSHIP

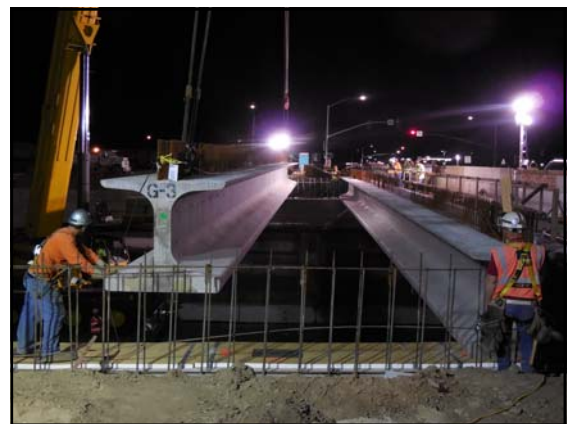
| | |
|----------------------|---|
| Matt Machado, PE, LS | Public Works Director |
| Kathy Johnson | Assistant Director, Business & Finance |
| Chris Brady, PE | Deputy Director, Road Operations & Construction Engineering |
| Colt Esenwein, PE | Deputy Director, Design Engineering, Shop, Survey |
| David Leamon, PE | Deputy Director, Development Services & Traffic Engineering |
| Eunice Lovi | Transit Manager |
| Peou Khiek | Geographic Information System Manager |
| Randy Avants | Road Operations Manager |
| Tate Hoffman | Shop Manager |

MISSION

Manage and improve infrastructure through safe and efficient use of resources and assets for the benefit of our citizens.

VISION

Strive to be the leading Public Works Department through innovative stewardship of infrastructure and environment.



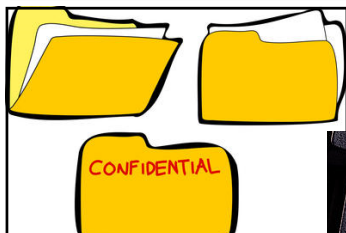
ADMINISTRATION DIVISION

The Administration Division provides divisional support in all areas of the Public Works Department with more focus in the areas of clerical and finance. Clerical support is provided in the areas of board agenda items, maintaining and organizing lead staff, human resources and other ongoing daily needs necessary for the smooth running of the department. Financial support is provided by the way of budgeting, payroll processing, accounts payables, and accounts receivables.

CLERICAL

The Administrative Support Division provides clerical support to other Public Works' divisions. Their role includes the preparation of board agenda items, human resources, training records maintenance, safety program strategic planning, first point of contact by greeting lobby customers and answering phones, processing mail, and a variety of other miscellaneous, but highly necessary tasks that ensure the department operates smoothly.

In the past year these individuals: Processed 90 board agenda items, conducted recruitments and processed new employees' packets, maintained office supplies inventory, coordinated janitorial and building maintenance services, logged and followed up on 1,232 customer comments and/or concerns through Stanislaus County's Customer Response Management System (CRM), which is also known as Government Outreach (GO).



FINANCE

The Finance Division is responsible for accounting, budgeting, contracting, lighting districts, accounts payable, accounts receivable, purchasing, and payroll for all divisions. The employees in Finance ensure that the department is following all County financial policies and safeguarding public funds.

The Finance Division has four full-time staff overseeing Public Works \$102 million budget. They perform the day to day functions that keep the department running smoothly.

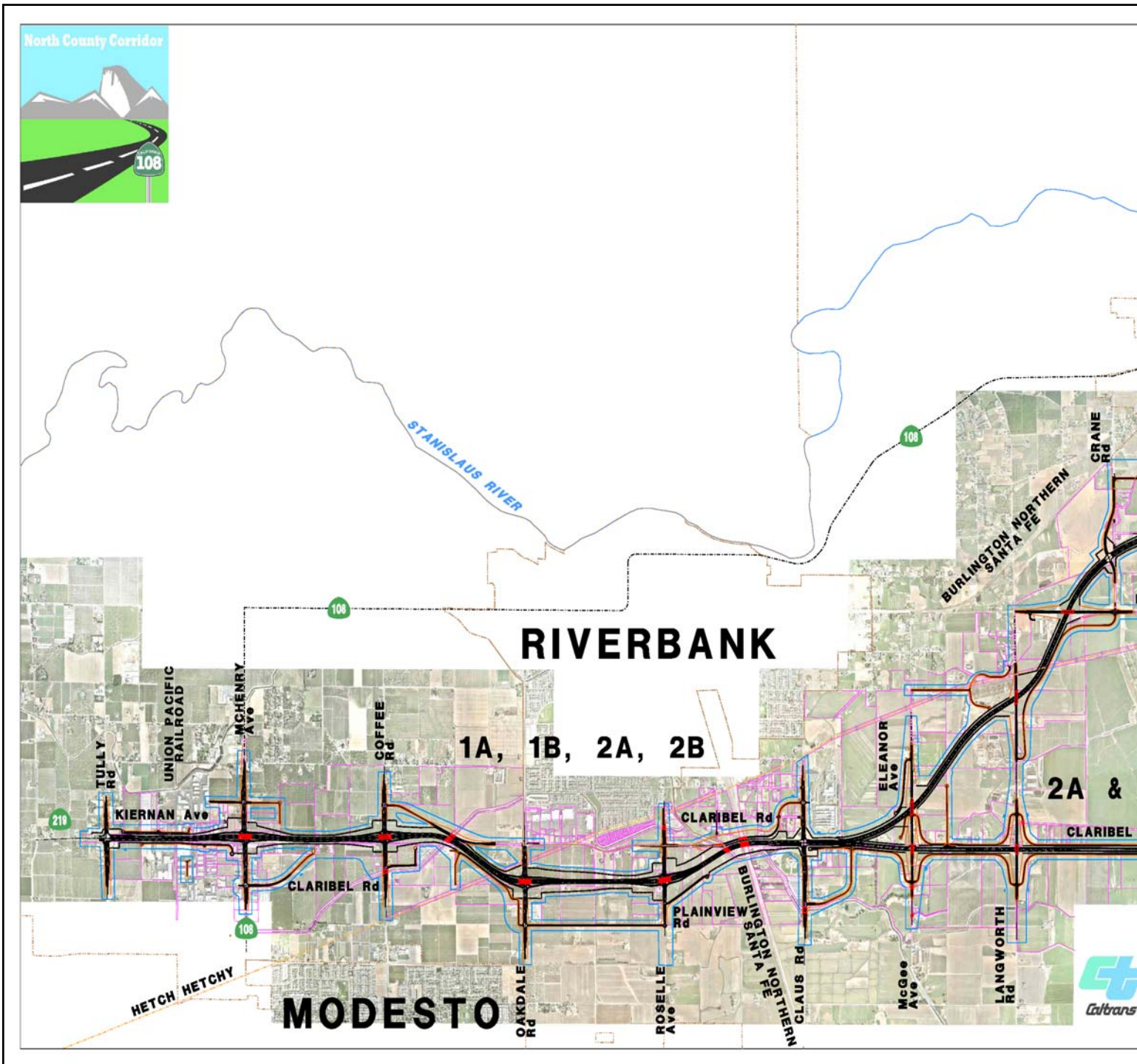
This year there were over 3,000 time cards (1,500 paychecks) processed for the Roads Division, and approximately 2,600 timecards (1,300 paychecks) from Administration, Engineering, Shop, and Transit.

Also, there were 213 street light repair requests in the Government Outreach (GO) system that were taken care of.

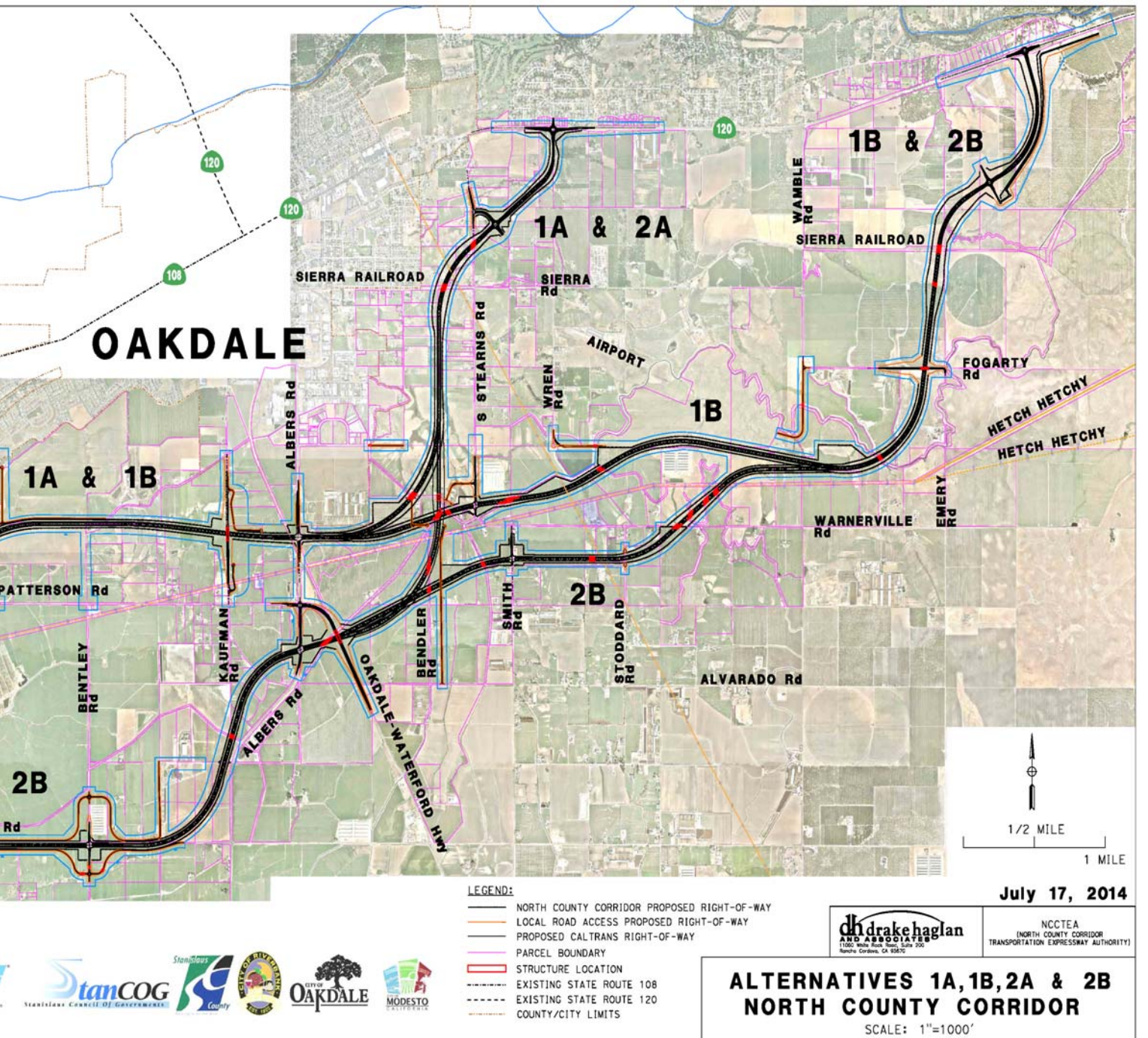
Paid 405 invoices for Roads projects, 1,132 in Roads and 973 invoices for special projects (County Service Area, Lighting Districts, and Landscape Lighting District).

NORTH COUNTY CORRIDOR

At the end of 2013, Drake Haglan and Associates (DHA) was awarded the job contract for North County Corridor (NCC). Since being awarded the contract, DHA has made many strides in the NCC movement. Field and environmental studies were done and compiled into a draft administrative document which was submitted to Caltrans. A value analysis study was completed to discuss an



array of alternatives to improve the project value, minimize impact and identify high cost items. Also, a lot of citizen input has been taken into consideration. The NCC financial audit was accepted without negative findings, and the budget has been amended to accommodate the new Intersection Control Evaluations mandate from Caltrans.

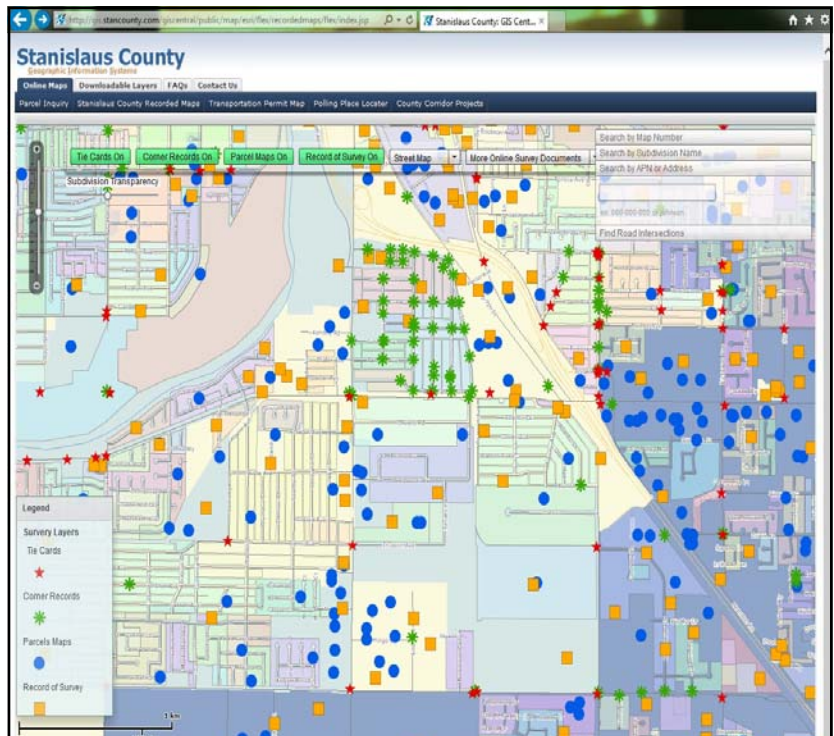


GEOGRAPHIC INFORMATION SYSTEM (GIS)

GIS Central

Establishing a GIS Central provides the groundwork to develop Stanislaus County's GIS into a dynamic tool for varied users (internal staff, other agencies, and the public). ArcGIS Desktop and Server (version 10.3) will be implemented, providing the technology platform for maintaining centralized management of GIS data and processes. GIS staff is constantly updating data and adding more layers as needed.

ArcSDE technology is an integrated part of ArcGIS and a core element of GIS. Its primary role is to act as the database access engine to spatial data, its associated attributes, and metadata stored within a relational database management system (RDMS). Making GIS available on the County's intranet system for internal users, and on the County website (<http://gis.stancounty.com/giscentral/>) for external users provides a powerful management tool to many at minimal cost.



2014 Accomplishments

- ◆ Changed some of our applications from Flex to JavaScript
- ◆ Updated ArcGIS (both Desktop and Server) to 10.2.2
- ◆ Developed a new GIS application (crop spraying) for Agricultural Commissioner Office.
- ◆ Funding contribution for General Fund departments
- ◆ Worked with cities and County departments to develop their GIS program
- ◆ Continued to work on Pavement Management System (PMS)
- ◆ Held GIS User's Group meetings
- ◆ Office of Emergency Services/911 contracted with GIS Central to supply their GIS data

2015 Goals

- ◆ Move all of our applications to JavaScript
- ◆ Obtain Public Facilities Fee funding for aerials
- ◆ Obtain 6' resolution aerial photography for the entire county (4 year contract)
- ◆ Update ArcGIS 10.2.2 to 10.3 (desktop and server)
- ◆ Schedule User's Group meetings
- ◆ Develop handheld GIS applications

DEVELOPMENT SERVICES

Processed the following permits and agreements:

- ◆ Annual Transportation Permits—310
- ◆ Daily Transportation Permits—747
- ◆ Encroachment Permits— 466
- ◆ PG&E Encroachment Permits—222
- ◆ Non-PG&E Encroachment Permits—244
- ◆ Pipeline Maintenance Agreements —33



2014 Summary of Development Services Activities:

- ◆ Obtained Board of Supervisors approval and adopted the 2014 Standards and Specifications
- ◆ Completed Empire Neighborhood Storm Water Low Impact Development & Greening Study
- ◆ Started and completed 75% of the Airport Neighborhood Urban Greening Storm Drain Master Plan
- ◆ Hired a consultant to help draft and implement the second year of the 2013 NPDES MS Phase II Storm Water 5-Year Management Plan
- ◆ Started and completed the PG&E Pipeline Pathways Tree Removal Project which consisted of vegetation removal work and a mitigation plan for trees located above the natural gas transmission pipeline on county-owned/franchise properties within the County of Stanislaus. The encroachment work will allow PG&E to better maintain, inspect, and continue safely operating their natural gas transmission pipeline in the County's right-of-way since certain tree and plant roots can damage underground gas facilities by impacting a pipeline's protective coating and exposing it to corrosion. Trees and plants growing near the facilities can also impede pipeline access for routine leak surveys, and ensuring ready access to the area above the pipeline translates into enhanced safety for the County, residents, and employees.
- ◆ Assisted the Building/Planning department with processing multiple building permit applications. There were 12 off-site improvement plans, 2 rezone applications, 13 parcel maps, 6 staff approvals, and 13 use permits processed.



TRAFFIC ENGINEERING

The Traffic Engineering Division provides support for other divisions in Public Works including Design Engineering, Construction Engineering, the Survey Office, Development Services and Road Maintenance. Traffic Engineering's main purpose is to move vehicles safely and efficiently throughout the County.



The Traffic Engineering Division performs traffic control plan checks for Development Services as well as ensuring that new development has safe and reasonable access.

In addition to the work done for the other departments, the division performs traffic studies for signs, signals and roundabouts, tracks traffic volumes throughout the County, monitors speed, and regulates parking zones.

Traffic Engineering provided traffic signal plans and specifications for the Claribel Road Widening Project at the intersections of Oakdale Road and Coffee Road. At Oakdale Road, the first video detectors for Stanislaus County were installed to expand the existing intersection and replace the failing inductive loop detectors in the pavement. The Iteris Vector Vantage Hybrid Camera/Radar system was installed.



This unit provides video detection at the intersection as well as detecting vehicles by radar through the fog, darkness, and rain up to 600 feet from the intersection.

The unit provided additional functionality at the Oakdale Road intersection as it allowed the Construction Team to "move" the detection zones during construction when lanes needed to be moved or closed temporarily. The

system allows technicians and engineers to use a computer-like mouse to draw in loops to the locations as they see fit.

The units also provide a safer environment for workers. Inductive loops in the pavement fail when the elastomeric sealant fails and over time, the loops will be pulled up. This creates havoc with the traffic signal controller.

At the Coffee Road intersection, the same video/radar unit will be installed along with the County's first 2070e Traffic Signal Controller, which is the newest available traffic signal controller technology. (See photo on right).

An "Inductive Loop" is an electromagnetic sensor that detects traffic as it approaches the intersection.



CONSTRUCTION ENGINEERING

The Construction Division manages all construction related elements of the Public Works Department capital improvement projects, which include roadway, utility, and bridge improvements. Through contract administration and construction inspection, it is the goal of the Division to ensure that each project is built according to the plans, specifications, on schedule, and within budget.

In 2014 year, the Construction Division also provided construction contract administration services to the Parks and Recreation and Planning and Community Development Departments.

The Construction Division experienced what could be the busiest year yet for project delivery. The division successfully managed 10 projects throughout the year, totaling nearly \$20 million of improvements. With an inspection staff of only four individuals, it was imperative for the division to utilize on-call construction management services to deliver all the projects this year. Harris & Associates and Caltrop Corporation successfully supplemented the division's staff, managing the daily inspection and administration duties for six projects.

This year also brought the introduction of various new pavement rehabilitation technologies. Prior to this year, the County had no experience with utilizing Cold-In-Place Recycling (CIR) and Full-Depth Reclamation with Foamed Asphalt (FDR-FA) to rehabilitate and restore pavements. Both were utilized to great success and the Department looks forward to studying the performance of both technologies over the coming years. The Department also experimented with concrete block pavers as a pavement system. The block pavers were installed at the Westley triangle on Howard Road and McCracken Road as a long life pavement solution to what is considered very heavily traveled roads with extremely heavy loads.

Cold-in-Place Recycling is a pavement rehabilitation process that doesn't use heat. A surface layer of the road is ground down, mixed with a rejuvenating asphalt emulsion, and then reused to pave that same road.

Full-Depth Reclamation with Foamed Asphalt is an in-place flexible pavement rehabilitation strategy that grounds existing asphalt concrete and a portion of the underlying material, while simultaneously mixing it with foamed asphalt, cement, and water. The mixture is then graded, compacted, and overlaid.

The 2014 construction season was highlighted by the long anticipated Claribel Widening project, which added a travel lane in each direction to Claribel Road from McHenry Avenue to Oakdale Road. The project also included adding traffic signals at the Claribel Road and Coffee Road intersection. While the project was not totally completed by the end of 2014, it was approximately 60% complete with project completion anticipated for May of 2015.

The division also administered two neighborhood sewer system improvement projects. Both the Parklawn Neighborhood Sewer project and the Airport Neighborhood Sewer project will be providing sanitary sewer service to neighborhoods that have long lived on failing septic collection systems. Both neighborhoods will greatly benefit from the improvements made as part of these projects.

CONSTRUCTION ENGINEERING (cont'd)

2014 Slurry Seal Project



Improvements: Slurry seal and pavement delineation

Cost: \$281,656

Start Date: June 23, 2014

Completion Date: September 17, 2014

Contractor: California Pavement Maintenance Company

Resident Engineer/Construction Inspector: Caltrop Corporation, Chris Brady

Empire Park Sidewalk and Lighting Project



Improvements: Site grading, concrete sidewalk construction, light installation, and sod replacement

Cost: \$84,300

Start Date: September 22, 2014

Completion Date: December 30, 2014

Contractor: Garrett Thompson Construction, Inc.

Resident Engineer/Construction Inspector: Bryan Voyles

Parklawn Neighborhood Sewer Improvements—Phase 2 Project



Improvements: Installation of sanitary sewer pump station, sewer mains, sewer service laterals, pavement reconstruction, shoulder backing, and pavement delineation

Cost: Approx. \$2.7 million

Start Date: August 18, 2014

Expected Completion Date: March 2015

Contractor: Knife River Construction

Resident Engineer/Construction Inspector: Peter Song



Airport Neighborhood Sewer Improvements



Improvements: Installation of sewer mains, sewer service laterals, pavement reconstruction, shoulder backing, and pavement delineation

Cost: \$698,705

Start Date: November 10, 2014

Completion Date: January 30, 2015

Contractor: Knife River Construction

Resident Engineer/Construction Inspector: Harris & Associates, Chris Brady

CONSTRUCTION ENGINEERING (cont'd)

Claribel Road Widening Project



Improvements: Roadway reconstruction, drainage swales, shoulder backing, pavement delineation, MID canal culvert installation, and total traffic signalization at Coffee Road intersection

Cost: \$6,388,839

Start Date: May 19, 2014

Estimated Completion Date: May 2015

Contractor: George Reed, Inc.

Resident Engineer/Construction Inspector: Mark Hamblin, Barlow Taylor



RSTP Program G—Faith Home Road and Keyes Road



Improvements: Full depth reclamation with foamed asphalt (Faith Home Road only), asphalt concrete overlay (Faith Home Road and Keyes Road), shoulder backing, and pavement delineation

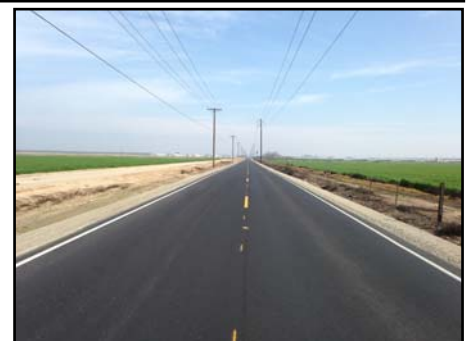
Cost: \$1,398,962

Start Date: November 3, 2014

Completion Date: January 2015

Contractor: Teichert Construction

Resident Engineer/Construction Inspector: Harris & Associates, Chris Brady



RSTP Program F—Westley Rehabilitation (Howard Road, McCracken Road)



Improvements: Concrete block paver installation, AC paving, shoulder backing, and pavement delineation

Cost: \$2,002,909

Start Date: July 14, 2014

Estimated Completion Date: April 2015

Contractor: Bay Cities Paving & Grading, Inc.

Resident Engineer/Construction Inspector: Caltrop Corporation, Mark Hamblin

RSTP Program H—Rogers Road



Improvements: Asphalt concrete overlay, shoulder backing, and pavement delineation

Cost: \$769,919

Start Date: October 27, 2014

Completion Date: December 2014

Contractor: Bay Cities Paving & Grading, Inc.

Resident Engineer/Construction Inspector: Harris & Associates, Mark Hamblin

CONSTRUCTION ENGINEERING (cont'd)

SR99/SR219 (Kiernan Avenue) Interchange



Proposed Improvements: Reconstruction of a storm drain pump station, reconstruction of the bridge overcrossing and off/on ramps, construction of auxiliary lanes between the Kiernan Avenue interchange and the Pelandale Avenue interchange, surface road widening and storm drain improvements, and replacement of traffic signal systems at ramp intersections and associated local road intersections
Bid Price: \$24,934,986 (Approximately \$7,100,000 constructed in 2014)

Start Date: April 15, 2013

Expected Completion Date: October 2015

Contractor: O.C. Jones & Sons, Inc.

Resident Engineer/Construction Inspector: Nolte Vertical Five, Bryan Voyles



RSTP Program I—Rosemore Avenue, Finch Road, Geer Road



Improvements: Cold-in-place recycling (Geer Road only), asphalt concrete overlay, shoulder backing, and pavement delineation

Cost: \$1,153,663

Start Date: November 3, 2014

Completion Date: January 16, 2015

Contractor: Bay Cities Paving & Grading, Inc.

Resident Engineer/Construction Inspector: Harris & Associates, Chris Brady



2015 Forecasted Projects:

- ♦ **SR 99/SR 219 (Kiernan Avenue) Interchange**
- ♦ **Claribel Road Widening (from McHenry Avenue to Oakdale Road)**
- ♦ **Central Avenue @ Taylor Road Reconstruction**
- ♦ **RSTP Program J - Emerald Avenue & Sperry Road**
- ♦ **Hatch Road @ Santa Fe Avenue Traffic Signals**
- ♦ **West Main Street @ Crows Landing Road Traffic Signals**
- ♦ **Pete Miller Bridge Seismic Retrofit**
- ♦ **Geer Road Bridge Seismic Retrofit**
- ♦ **Claribel Road @ Terminal Road Traffic Signals**

ROADS AND BRIDGES

In an effort to maintain and ensure safety on our county roads and road right of ways the Roads Division was busy throughout 2014. While our



paving, painting and chip seal maintenance is done from spring to late fall, our winter maintenance is equally important. Our storm water facilities are no exception.

Earlier this year the Roads Division implemented our new Supervisory Control and Data Acquisition

(SCADA) system. This is a communications system that monitors our storm water pump stations through radio frequency to our Roads Supervisors office at Morgan Road. It has a dedicated computer with software which not only provides the necessary information, but also allows changes to be made to the actual storm water pumps from the computer.



In addition to our storm water pumping facilities our Morgan Road Corporate Yard is the site where street sweeping and suction truck debris is delivered. To comply with the ever changing requirements from the California State Regional Water Board, the Roads

Division has recently constructed an area for receiving this debris before being transported to the Fink Road landfill.

With a multitude of catch basins and clean outs, the bridge team installed a three stage oil separator to eliminate all solids and oil from the waste water. The Morgan Road Shop is in the process of installing a recycling unit to eliminate any contaminants to allow the reuse of water that is delivered to this facility.



This summer our chip seal crew increased our roads resurface mileage from 75 miles in 2013 to 110 miles in 2014. Following the completion of our chip seal program the same crew changed gears and began paving.

One of our roads in the Turlock area (Golf Road) which has an average daily traffic count of over 7,000 cars per day was resurfaced with asphalt, new shoulder backing and centerline striping.



In addition to Golf Road, we continued on to the Hughson area on Parks Road. Through communication with constituents we had the opportunity to enter a partnership with private contributions to resurface Parks Road

which is approximately .5 mile.



To remain in compliance with the Federal Highway Administration (FHWA) our traffic sign shop



has retooled to allow us to make our traffic signs with "High Intensity" reflective sheeting. We have been converting from "Engineer Grade" sheeting through sign orders and sign resurfacing. Purchasing a sign "squeeze roller" allows us the ability to not only make new signs in "High Intensity," but also to recover our outdated signs.

With 79 working days of centerline and edge line striping the traffic crew striped 110 miles of chip seal roads twice, in addition to restriping half of Stanislaus County. With a total of 606.2 miles of centerline striping and 136 miles of edge line striping. The traffic crew also painted 586 pavement markings (STOP & STOP AHEAD) among other road warnings. Additionally they painted 4,828 feet of crosswalks.



Public Works has been working with Denair Unified School District to construct a new sidewalk along the north side of Monte Vista Avenue from Lester Road west to the end of the football field. (See photo upper right). This would provide a safe access for everyone attending the Denair High football games and provide an aesthetically pleasing addition along Monte Vista Avenue. The Denair Unified School District is partnering to install grass and sprinkler system which the school district will maintain. Central Valley Concrete has agreed to donate the necessary cement to help minimize cost and foster a community involvement. The Roads Division has completed the grading for this project, which is expected to be completed in January 2015.



MORGAN SHOP

Morgan Shop is an Internal Service Fund (ISF) whose primary function is to provide services to the Road and Bridges Division for a large variety of equipment. Morgan Shop also provides technical and mechanical service to Department of Environmental Resources, Sheriff's Department, and Parks and Recreation.

This service consists of inspection of all heavy equipment enrolled in the California Highway Patrol-Department of Transportation (CHP-DOT) program including required record keeping for compliance. Morgan Shop is known for its strength in heavy application which makes us a key provider of mechanical repair, fabrication, and field service for Landfill equipment.

Currently, Morgan Shop consists of 5 Heavy Equipment Mechanics, 1 Lead Heavy Equipment Mechanic, 1 Staff Services Analyst, and 1 Manager III. This year Morgan Shop partnered and enlisted the help of 3 aides from Alliance Worknet.

Staff News

In January, Morgan Shop Manager, Mel Eslinger, Retired after 30 years. Tate Hoffman, from the City of Modesto, joined the ranks as Morgan Shop Manager in April. Welcome Tate!



Top row from left to right: Dave Stacy, Tate Hoffman, Phil Harley
Bottom row from left to right: Ed Soares, Rick McElligott, Roger Nelson, Brett Ernest, Olivia Tanner



Morgan Shop Building 4



Alliance Worknet Aides from left to right: Lorissa Kots, Josh Morales, and Pedro Ruiz

Morgan Shop owns and maintains a complex fueling station which includes Diesel fuel #2, Biodiesel 20% blend, Unleaded, and fast and slow fill Compressed Natural Gas (CNG) for all Stanislaus County Departments and other local jurisdictions fueling needs. Morgan Shop is responsible for all regulatory and maintenance items required to safely and legally dispense fuel in California.

In 2014 Morgan Shop issued:

- ♦ 274,812 gallons of Gas
- ♦ 190,507 gallons of Unleaded
- ♦ 5,620 gallons of Biodiesel
- ♦ 199,385 gallons of Compressed Natural Gas

New equipment that was added to the fleet in 2014 included:

- ♦ Two Ford F250 standard cab pickups to replace like equipment used by the Roads and Bridges departments
- ♦ One pull behind road sweeper which is used for chip sealing, line painting, and emergency road cleaning after storm events
- ♦ A self-propelled standalone shoulder machine, which replaced the shoulder machine that required attachment to a large wheel loader for operation

“The entire Morgan Shop crew, from the management to the mechanics has always treated Hazmat team members and our equipment as one of their own brothers. We can truly say we are thankful to have this relationship, for the sake of the county, and for ourselves.”
Lucien Musso, DER-Hazmat



New Shoulder Machine



Ed Soares replacing a hydraulic line



David Stacy performing preventative maintenance



Rick McElligott and Brett Ernest on a work order consultation



Roads Leadman, Scott Pendleton with Shop Manager, Tate Hoffman

Mission

Statement

We will provide prompt quality maintenance and repair of our County customers' equipment to keep them running efficiently.

We will provide useful equipment for our customers to do their jobs effectively.

MORGAN SHOP (cont'd)

Large projects completed in 2014 by Morgan Shop included:

- ◆ Constructed new wash pad and relocated it to make room for new shop
- ◆ Purchased new water recovery and treatment plant to recycle wash water.
- ◆ Purchased new natural gas fired steam cleaner
- ◆ Reorganized the pole barn storage to cover items from storms and passage of our California Water Board inspection
- ◆ Updated security system to include a new camera at south entrance gate. This camera feeds a viewing station at the administration desk to allow controlled access to the yard for vendors and business needs.
- ◆ Supplied field support to the Road and Bridges department for over 100 miles of chip seal and asphalt that was applied this year
- ◆ Established added measures to safeguard against growing vandalism. Specifically installed engine and fluid locks on all equipment that might be left in the field during extended projects and fabricated hinged locking straps on portable information sign boards to prevent battery theft.
- ◆ Transitioned Alliance Work Net aides in to the shop to help improve vehicle cleanliness and low level maintenance that had been neglected or outsourced during busy seasons
- ◆ Moved technically from old handheld work-order data entry devices (called "Dolphins") to personal computer work stations for labor and parts tracking
- ◆ Completed 1,723 repair work orders during 2014



Morgan Shop Deadline—Equipment waiting to be repaired or serviced



Sheriff's bomb squad vehicle and transportation bus

“Operating Emergency Response Vehicles, we are on call 24/7, and we cannot afford for our vehicles to be in the Shop for more than a few hours. I appreciate Morgan Shop because they are quick to respond to our needs. They take our vehicles at the last minute, are quick to assess, and are very attentive to our requests.”

Deputy Jesus Sigala, Sheriff's Bomb Squad

Morgan Shop not only services vehicles at 1716 Morgan Road, but has two service vehicles that service vehicles throughout Stanislaus County. In 2014, Morgan Shop processed 236 mobile work orders. Below are some of Shop's vehicles in action.



Roger Nelson, Heavy Equipment Mechanic with Morgan Shop service truck



Jeff Gentleman, Road Maintenance Worker in boom truck trimming trees near Shiloh School in Modesto



Road Maintenance Workers James Sanchez and Steuart Holt operating the vacuum cleaning drains on 9th Street in Modesto



George Molina, Road Maintenance Worker is operating grader to smooth out a new shoulder on Ehrlich in Turlock



Bridge crew operating bridge panel truck (yellow) and lift truck on Knights Ferry Bridge

“We really appreciate the prompt and professional service we get from Morgan Shop. The mechanics are top-notch.”

Tom, Modesto Reservoir Staff

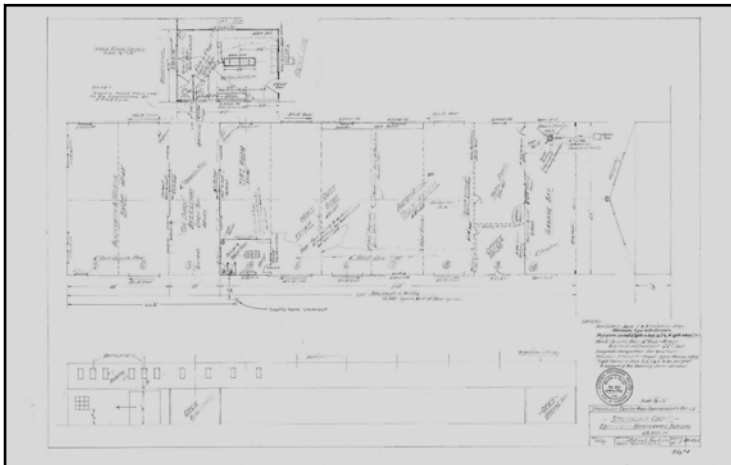
NEW YEAR, NEW SHOP!

In 2014, Public Works began Phase 1, the Design Phase of construction, for the new Morgan Road Facility Maintenance Shop. Ground breaking construction is set to begin in 2015. During the years, Morgan Shop has undergone numerous changes. The break room used to be where the office is at this time, and the parts room was on the right side of and above the bathroom. The office was where the break room currently is, and the tire room was where the tool room presently resides, and so on... Morgan Shop has been located at the Morgan Road facility since 1958. It has served its purpose and its time. With the purchase of alternative fueled vehicles in our Go Green movement, Morgan

Shop requires a shop better suited to maintain and repair alternative fueled vehicles. As a team, most of Public Works is participating in the building of the new shop: Engineering with the Design Phase, and Roads and Morgan Shop with the tearing down and relocation of current buildings and structures to make room for the new structure. Here are some of the changes Roads and Morgan Shop completed in 2014 to prepare for the new shop:

- ◆ Morgan Shop collaborated with Roads to relocate the lift rack from the inside of the shop to the center of Morgan Yard next to the water tower. The lift rack was also converted to the steam rack.
- ◆ Morgan Shop tore down the wall separating the machine/welding shop from a bay that once contained the lift rack and built a new wall that separated the lift rack bay and the machine/welding shop from the rest of the shop. Eventually, the machine/welding shop and bay will be removed to make room for the new shop.

Shop Plans (1957)



Draft Shop Plan Options (2014)



DESIGN ENGINEERING

Hickman Road Bridge

Stanislaus County Department of Public Works, with Federal Highway Administration funding, is planning to replace the existing Hickman Road Bridge over the Tuolumne River. The existing bridge was built in 1964. Since its construction, the channel of the Tuolumne River has degraded during high river flow events causing erosion to occur at the bridge foundations. In November 2004, emergency repair work was completed to temporarily armor the foundations and slow down the erosion of the bridge foundations. Since the degradation of the river channel is a global channel stability issue reaching far beyond the location of the bridge, there is not a practical permanent solution to the bridge foundation erosion. The existing bridge is also too narrow for a two lane road with its current traffic count of 7,700 vehicles per day, and there are no pedestrian or bike facilities on the bridge to allow safe access across the Tuolumne River.

This project will replace the existing bridge with a new bridge that is wide enough to accommodate two lanes of vehicular traffic plus safe pedestrian and bike access. The new bridge will be supported on a deep drilled pile foundation to address the on-going degradation of



the Tuolumne River channel. The new bridge will be placed either upstream or downstream of the existing bridge to allow for the construction of the new bridge to take place while the existing bridge continues to provide public access across the Tuolumne River.

The exact alignment will be determined as part of the initial design work for the project. The bridge type and aesthetic features will also be determined in the initial work. The existing bridge will be removed once the construction of the new bridge is complete.

Stanislaus County has selected Drake Haglan and Associates, a consulting engineering firm, to assist with the design and environmental assessment, clearance, and permitting for this project. The County and consultant team is responsible for the project design and compliance with both the California Environmental Quality Act (CEQA) and the National Environmental Policy Act (NEPA).

The project is being funded in part by the Federal Highway Bridge Program (HBP). The design and environmental clearance effort is anticipated to be completed by late summer of 2016. Construction is anticipated to begin in the spring of 2017 and completed by 2018.

DESIGN ENGINEERING (cont'd)

RSTP Phase F—Howard Road, McCracken Road, and Ingram Creek Road Rehabilitation Project

PURPOSE

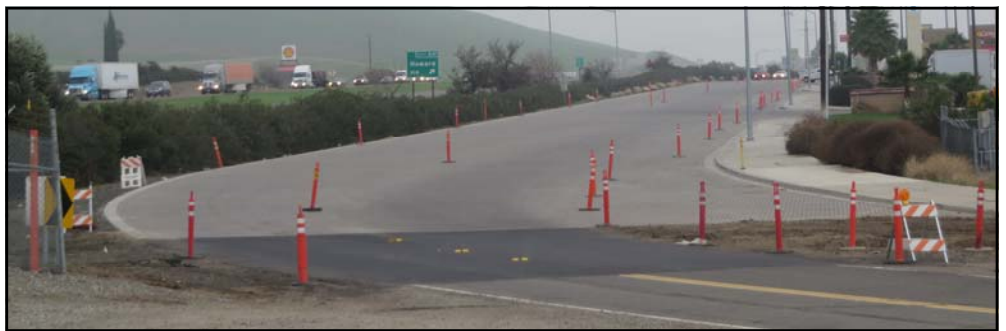
The purpose of the project is to repair the existing road.

NEED

The existing asphalt road has degraded over the years with the addition of several highway commercial uses that attract a large volume of truck traffic due to its proximity to the Interstate 5 off-ramps at Ingram Creek Road. The road surface shows signs of structural failures in many locations which will require the road to be reconstructed versus applying an asphalt overlay on the existing surface.

OBJECTIVE

Reconstruct the existing paved surface to provide a safe, smooth and structurally sound driving surface. Concrete pavers were used to create a long lasting, low maintenance roadway surface.



Claribel Road Widening Project



The Claribel Road Widening project will widen Claribel Road from two lanes to four lanes, construct a Class I Bikeway, replace the Modesto Irrigation District Lateral No. 6 bridge with concrete pipe culverts, and signalize the intersection of Coffee Road at Claribel Road.

RSTP Phases H and I



The Project consists of roadway surface preparation for road surface maintenance, application of dense graded hot mix asphalt overlay, pavement markings, striping, and installation of shoulder backing on approximately 10.8 miles of County roads. Roadway surface preparation includes grinding, pavement dig out and patchwork as needed.

RSTP Phase H includes: Rogers Road from State Highway 33 to Zacharias Road and Sperry Road (Interstate 5 southbound ramps to approximately 200 feet east of Rogers Road). This project was in partnership with the City of Patterson.



RSTP Phase I includes: Emerald Avenue (Kansas Avenue to Woodland Avenue), Rosemore Avenue (Kansas Avenue to State Highway 132), Geer Road (State Highway 132 to Tuolumne River), Geer Road (Tuolumne River to Hatch Road), Finch Road (Garner Road to Modesto City Limits) and Albers Road (State Highway 132 to Rice Road).



TRANSIT

Stanislaus Regional Transit



In 2014, the Public Works Transit Division successfully completed several transit projects:

- ♦ Partnered with the Cities of Modesto and Ceres to issue a Request for Proposal (RFP) to select a new transit operations contractor for each transit operator.
- ♦ Received approval from the Board of Supervisors (BOS) to award a five year contract to Storer Transit Systems, Inc. to continue operating the County's transit services.
- ♦ Took delivery of a 35 foot bus in March 2014 to complete bus purchases approved by the Board of Supervisors in 2012 and 2013.
- ♦ Completed a comprehensive planning study that examined existing transit service and to develop recommendations to improve and enhance transit operation throughout the service area.

The Transit Division implemented BOS approved service recommendations to enhance existing transit services. Significant changes were made to improve on-time performance in addition to adjusting running times on most fixed routes to address long waiting times for passengers. The improvements have resulted in increased usage on most routes.

High performing routes consist of Routes 40, 45-East, 45-West, 60, Waterford/Modesto

Runabout, Eastside Shuttle, and four Dial-A-Ride service routes. Route 40 gained close to 5,000 more passengers or an increase of 14% while Route 60 grew by 2,000 passengers indicating a growth of 11%. Ridership on the Eastside Shuttle rose by 55% and also noted is a ridership gain of 2,700 riders or 19% increase on the Waterford/Modesto Runabout. Additional gains were recorded on the Newman, Patterson, Oakdale, and Riverbank Dial-A-Ride services.

Of the service improvements implemented, the Route 45 gained the most ridership. As part of the changes, the existing Route 45 was split into two; resulting in one new route.

- ♦ Route 45-West serving residents in Patterson, Newman, Crows Landing and Gustine in Merced County.
- ♦ Route 45-East, operates between Patterson and Turlock which enables passengers to connect to Routes 10 and 15 at the Turlock Transit Center for trips to and from Modesto to Turlock.

At the end of the period ending June 2014; ridership on both Routes 45-West and 45-East increased significantly, bringing the total ridership to 32,532. Improvements made to the existing route resulted in an increase of more than 12,600 riders.

Overall, 42,000 more passengers were carried on the transit system with approximately 17,379 more passengers using the fixed routes and 6,462 more passengers utilizing the Dial-A-Ride services. For the period ending June 2014 StaRT operated over one million revenue miles, 57,544 revenue hours, and generated \$514,308 in passengers' fare revenue. Passenger fares collected for the period ending June 2014 increased by \$28,317 compared to the period ending June 2013.



2014 Accomplishments:

- ♦ Participated in 24 County-wide events throughout the County to promote and market transit services provided by StaRT that included attendance at the following:
 - * Disability Resource Fair
 - * Healthy Aging Summit
 - * Rideshare Week Activities
 - * Stanislaus County Probation Open House
 - * Senior Awareness Day
 - * Earth Day Festivities in the cities of Modesto and Riverbank (photo on right)
 - * Senior Events throughout the County
- ♦ Completed the Annual Transportation Development Act and the State Controllers' Audits;
- ♦ Worked with the City of Modesto Public Works Transit Division to become a sub-recipient for the Federal Transit Administration Section 5307 transit grant funds;
- ♦ Participated in the annual Unmet Transit Needs public meetings and hearings held by the Stanislaus Council of Governments in Patterson and Oakdale and attended meetings at four Congregate meal sites;
- ♦ Partnered with the City of Modesto Transit Division to increase the number of bus bays leased by StaRT for transit operations at the Modesto Transit Center;
- ♦ Completed grant reports and the National Transit Database (NTD) Reporting for submission to Federal and State agencies;
- ♦ Applied for and received Congestion Mitigation Air Quality (CMAQ) funds to implement a commuter service route to serve residents in the western part of the County;
- ♦ Partnered with The Bus on transit service offered in Merced County;
- ♦ Redesigned some of StaRT's marketing and promotional materials including a new brochure for the Medivan service and Ride Guide, launched StaRT on Facebook and Twitter, as well as began internet radio advertisement on Pandora; and
- ♦ Received approval from Caltrans on StaRT's Draft Title VI Plan.



Photos from left to right:

Waterford Headstart Event

Bike to Work Event in Modesto

Riverfest Activities in Riverbank



TRANSIT (cont'd)

Fill-A-Bus

The County's Public Works Transit Division launched its first ever Fill-A-Bus program approved by the County Board of Supervisors in April 2014. The food drive was held in partnership with the City of Modesto's transit system (Modesto Area Express [MAX]), the Stanislaus County Consolidated Transportation Service Agency (CTSA), Modesto View, Mid-Valley Publications, and the County's transit operations contractor, Storer Transit Systems, Inc.



The purpose of the food drive was to help residents in need in Stanislaus County during the holiday season. All county residents were asked to donate canned (no glass containers) or non-perishable foods to the Fill-A-Bus campaign. A Stanislaus County transit bus was placed at the Modesto Transportation Center at 1001 9th Street from 8:00 a.m. to 4:00 p.m. on November 25th. Donations were received from people from all walks of life including individuals who might also be in need. It was amazing to watch our community pull together to help those facing hard economic times. Close to 700 pounds of canned food and non-perishable goods were collected for this year's Fill-A-Bus Program, with the proceeds donated to the Stanislaus County Salvation Army in the City of Modesto. The Fill-a-Bus program supports the County's Board of Supervisor's value of caring and showing concern for the well-being of others in the community.

The County's Transit Division wishes to thank all County staff, especially the Department of Public Works that participated in this program, our partners at MAX, CTSA, Mid-Valley Publications, and Modesto View. We extend our heartfelt appreciation to Storer Transit for all their help, and sincere gratitude and appreciation to April Henderson-Potter for a great job and for successfully implementing this program. We hope to see you all at next year's Fill-A-Bus campaign event.



Upcoming Goals in 2015:

- 1. Plan and implement recommendations for Phase one of the Comprehensive Operations Analysis;**
- 2. Begin service planning activities for proposed Commuter service;**
- 3. Complete phases one and two of the Solar Lighting Installation Project at select bus shelters;**
- 4. Begin marketing an Outreach Plan to brand the County transit services; and**
- 5. Begin planning activities for phase one implementation of the Information Technology System project**

SURVEY

What we do:

- ◆ Field Services include county surveys, monument preservation, data gathering, right-of-way establishment/staking, construction staking, and field inspections;
- ◆ Indexing—records are indexed internally – such as benchmarks, deeds and easements, and subdivision maps. Records are also indexed externally (via web site) such as Records of Survey, county surveys, subdivision maps, parcel maps, certificates of correction, and corner records;
- ◆ Map checking and recording;
- ◆ Legal description writing, verification and recording;
- ◆ Drafting services;
- ◆ Right-of-way abandonments; and
- ◆ Certificates of Compliance.



Setting Confluence Monument



Checking Grade on Kerr Avenue

2014 Accomplishments:

- ◆ Worked with Merced County on a joint survey of the County line
- ◆ Maintained and preserved the Government Land Office (GLO) cadastral monuments
- ◆ Upgraded survey equipment
- ◆ Submitted 42 maps for checking and recording
- ◆ Verified approximately 37 legal descriptions for Local Agency Formation Commission (LAFCO) and Planning Department
- ◆ Worked on two county surveys
- ◆ Processed nine Certificates of Compliance
- ◆ Verified and recorded eight written Irrevocable Offers of Dedication descriptions
- ◆ Worked as support for County road crews to complete RSTP Program F and Airport Neighborhood Sewer projects
- ◆ Added Corner Records and Tie Cards geographically to the Index on the County's Geographic Information System (GIS)
- ◆ Continued to electronically archive survey records
- ◆ Added 1,500 plus un-recorded surveys to the County's Map Index

2015 Goals:

- ◆ Set memorial corner for LS 3863 (Wayne Sutton) as a part of Stanislaus/Merced County Line Survey
- ◆ Retracement survey to locate or re-establish Section Corners in Section 32 of T.5 S., R. 7 E. and Section 2-6, 8-11 & 15-18 all of T. 6 S., R 7 E. Mount Diablo Meridian
- ◆ Continue to partner with other local agencies on projects
- ◆ Re-survey of Township Line between T.2 S., R.13 E. & T.3 S., R.13 E., from township stone east to S.E. corner of Section 33
- ◆ Continue to work with Merced County on a joint survey of the County line

STORM WATCH!



Stanislaus County experienced one of its heaviest winter storms in a while. The Road Crew worked non-stop and diligently to clear flooding, assist the community with sandbags, and keep our roads running smooth. Thank you, Road Workers!

QUARTERLY SAFETY MEETINGS



CULTURAL AWARENESS WEEK

The Board of Supervisors proclaimed September 28th through October 4th as Stanislaus County Diversity Awareness Week. Public Works celebrated with a potluck featuring dishes employees brought to represent their culture.



UNITED WAY

This year Public Works employees donated \$1,759 to the United Way Campaign! Way to go!



OPERATION CHRISTMAS CHILD

Since we had such a big turnout in 2013 for the Operation Christmas Child (OCC) Holiday project, we decided to participate in it again in 2014. OCC is a project of Samaritan's Purse and offers hope to children ranging from ages 2 to 14 years old from around the world by giving out shoeboxes filled with gifts during Christmas.

As a department we gave 31 children a shoebox filled with hope and love. We completed 31 boxes and collected a total of \$241 for shipping charges and/or shopping. We had at least four people who donated the shipping charges on-line so they could follow their boxes. It will be interesting to find out where in the world their boxes ended up. This was a very heartwarming experience for us to participate in. Our OCC coordinator, Julie Serrano, Accountant III, said, "I am very proud of our department for being able to reach so many children with our gifts of hope and love."

EVENTS



Clockwise from the top left:

Mel Eslinger, Shop Manager—Retired with 30 years

Diane Haugh, Assistant Director—Retired with 15 years

David Gein, Engineering Technician—Retired with 15 years

Letisia Corona, Confidential Assistant III—Left County employment with 10 years

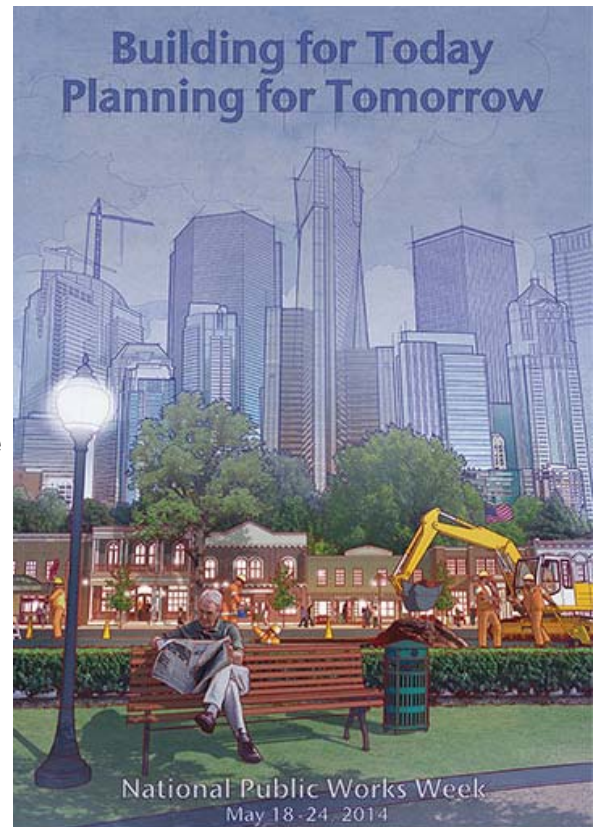
Bring Your Child to Work Day—Learning the ropes in the Sign Shop

PUBLIC WORKS WEEK

Since 1960, American Public Works Association (APWA) has sponsored National Public Works Week.

APWA chose "Building for Today, Planning for Tomorrow" as the 2014 theme because it represents the classic idea of stewardship embodied by the profession of public works and the professionals that practice it. Focusing on the communities "*building*" points out the day to day aspect of public works that is quality of life, while "*planning*" references the sustainable practices that ensure that quality of life for future generations.

Our Board of Supervisors proclaimed the week of May 18th as Stanislaus County Public Works Week, which was celebrated with an Employee Appreciation Luncheon.



Public Works had three volunteers in 2014. They are:

Ross Campbell

Jared Harris—Geographic Information System

Randolf Sanders—Engineering

Lastly, service certificates were handed out to the employees listed below.

5 years: Peou Khiek, Jeff Gentleman, Brett Johnson, and Jason Lindquist

10 years: Sharon Andrews, Aron Harris, Sherry Rowe, Joann Schmidt, Brett Ernest, Federico Arroyo, Wayne McConnell, Eric Moore, and Keith Wilcox

15 years: Linda Allsop, Michael Martin, and John Murray

20 years: Brian England, Jorge Molina, and Scott Pendleton

30 years: John Ramazzina

Thank you for your service!

EMPLOYEE APPRECIATION LUNCHEON



BOARD OF SUPERVISORS



William O'Brien
District 1



Vito Chiesa
District 2



Vice-Chairman
Terry Withrow
District 3



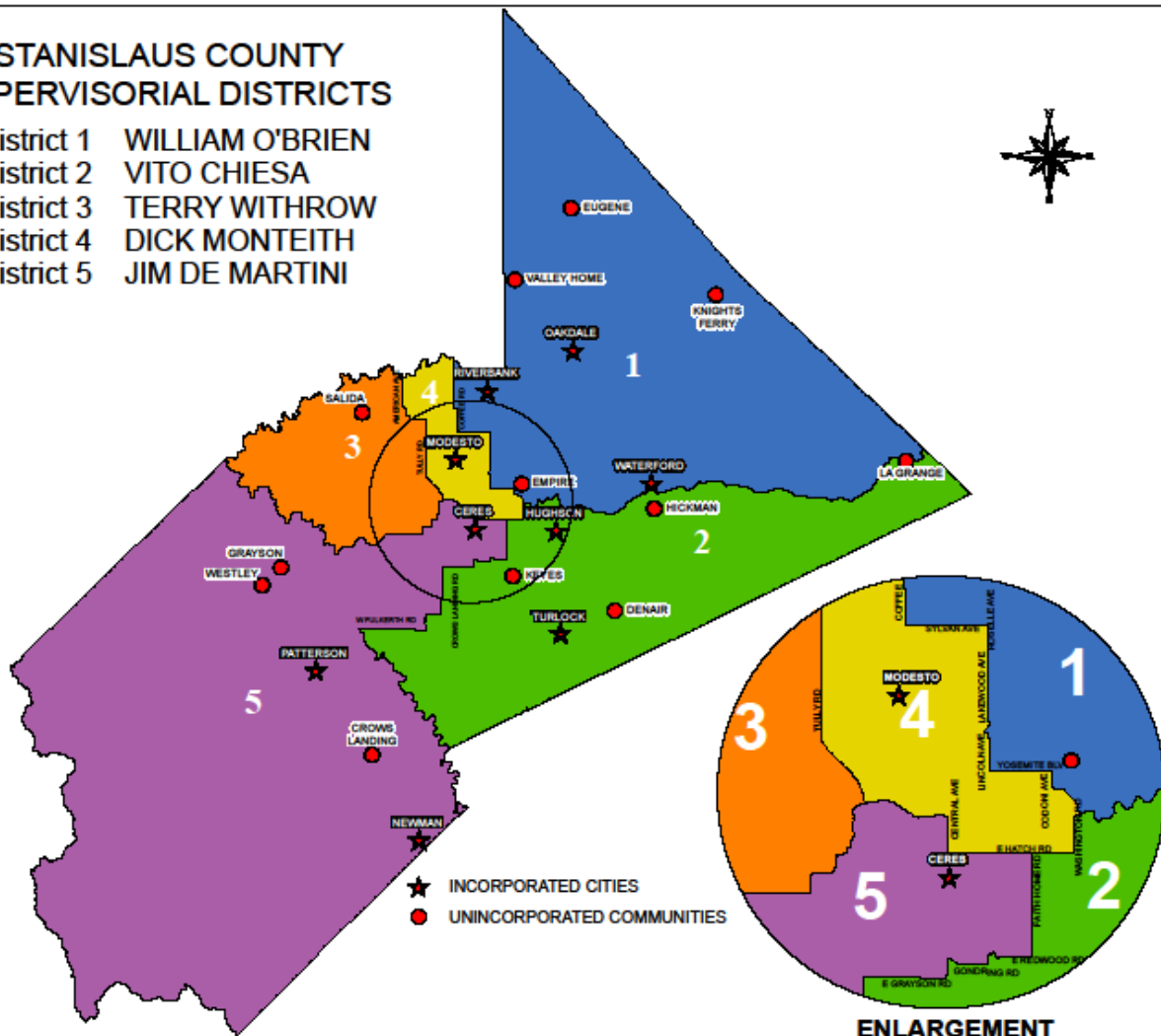
Dick Monteith
District 4



Chairman
Jim DeMartini
District 5

STANISLAUS COUNTY SUPERVISORIAL DISTRICTS

- District 1 WILLIAM O'BRIEN
- District 2 VITO CHIESA
- District 3 TERRY WITHROW
- District 4 DICK MONTEITH
- District 5 JIM DE MARTINI



CONTACT



**[www.stancounty.com/
publicworks](http://www.stancounty.com/publicworks)**

1010 10th Street, Suite 4204

Modesto, CA 95354

(209) 525-4130

(209) 525-6507 Fax

(209) 525-4332 Fax for Transit

- Development Services
- Encroachment Permits
- Transportation Permits
- Transit



1716 Morgan Road

Modesto, CA 95358

(209) 525-4130

(209) 541-2505 Fax

- Administration
- Construction Engineering
- County Surveyor's Office
- Design & Traffic Engineering
- Finance
- Geographic Information System
- Morgan Shop
- Road Operations



You may also contact us by submitting your

questions or concerns online at:

www.stancounty.com/customercenter

or

Stanislaus County's assistance hotline at

1 (877) 2ASSIST / 1 (877) 227-7478