



PARK COMMISSION

Zachary Keller, Chair
Veronica Plaugher-Macias, Vice Chair
Jami Aggers, Director, Parks and Recreation
Merry Mayhew, Assistant Director, Parks and Recreation

3800 Cornucopia Way, Suite C, Modesto, CA 95358-9492
Phone (209) 525-6750 Fax (209) 525-6773

AGENDA

Thursday, February 8, 2018 at 5:00 p.m.

3800 Cornucopia Way, Suite C, 2nd Floor Conference Room
Modesto, CA 95358

Call Meeting to Order:

The Stanislaus County Park Commission encourages public participation and welcomes the public's interest. Members of the public may be heard on any item of the Stanislaus County Park Commission's agenda. A person addressing the Commission will be limited to five (5) minutes, unless the Chairperson of the commission grants a longer period of time. The Commission will allow comments by members of the public on an agenda item only during consideration of the item.

Agenda Items:

1. Call to Order	Chair
2. Roll Call and Excused Absences	
3. Introduction(s)	
4. Public Comment(s)	
5. Approval of Minutes for January 11, 2018 Meeting	Commissioners
6. Staff Highlights	Staff
7. Form 700 Reminder (AB 1234)	
8. Commission Comment(s)	Commissioners
9. Old Business	

Adjournment, the next meeting will be on:
Thursday, March 8, 2018 at 5:00 p.m.
3800 Cornucopia Way, Suite C, 2nd Floor
Modesto, CA 95358

Standing Reminders:

- Elections in November
- July is Parks Month
- AB 1234 700 Forms (annual)
 - Link: <http://www.fppc.ca.gov/Form700.html>
- Ethics Course (every two years)
 - Link: <http://localethics.fppc.ca.gov/login.aspx>

Commission Goals:

- Enhance Board Communication
- Increase Partnerships
- Training and Education for Commissioners
- Increase Awareness of Parks

Regular meetings are held at 5 p.m. the 2nd Thursday of each month at Stanislaus County Parks and Recreation in the Stanislaus Building, on the 2nd Floor Conference Room at 3800 Cornucopia Way, Modesto, CA 95358. If you have an item you wish to be considered for a regular meeting agenda, please contact the Commission Secretary at (209) 525-6770, three (3) weeks prior to the regularly scheduled meeting.

REASONABLE ACCOMMODATIONS: In compliance with the Americans with Disabilities Act, if you need special assistance to participate in this meeting, please contact the Commission Secretary at (209) 525-6770. Notification 72 hours prior to the meeting will enable the Department to make reasonable arrangements to ensure accessibility to this meeting. Agendas can be found online at <http://www.stancounty.com/parks/parks-recreation-commission.shtm>, subject to staff's ability to post prior to the meeting. Materials related to an item on this Agenda submitted to the Commission after distribution of the agenda packet are available for public inspection during normal business hours at the main office of the Department of Parks and Recreation, 3800 Cornucopia Way, Suite C, Modesto, CA 95358.



PARK COMMISSION
Zachary Keller, Chair
Veronica Plaughter-Macias, Vice Chair
Jami Aggers, Director, Parks and Recreation
Merry Mayhew, Assistant Director, Parks and Recreation

MINUTES

January 11, 2018, at 5:00 p.m.

Stanislaus Building, 2nd Floor
3800 Cornucopia Way, Suite C
Modesto, CA 95358

MEMBERS PRESENT:

Zachary Keller, D2
Joseph Sanchez, D3 (telephone conf.)
Ron West, D4
Chad Kennedy, ALT
Ed Persike, ALT

PARKS & RECREATION STAFF PRESENT:

Merry Mayhew
Jami Aggers
Cathy Gomez
Mae Song

MEMBERS ABSENT:

Veronica Plaughter-Macias, D5

GUESTS PRESENT:

Jim DeMartini
Alison Kelly
Elaine Gorman
Deborah Armstrong
Laura Milam

A. CALL TO ORDER & INTRODUCTIONS

1. The meeting was called to order and those in attendance were introduced.
2. An excused absence was received for Veronica Plaughter-Macias.

ACTIONS

Zachary Keller

B. APPROVAL OF MINUTES

Minutes for the November 9, 2017 meeting were approved upon motion and second as written.

ACTIONS

*West, Kennedy,
unanimous approval*

C. APPROVAL OF 2018 MEETING CALENDAR

The 2018 Park Commission meeting calendar was approved upon motion and second with a minor correction to the month of December – The Park Commission does not meet in December.

ACTIONS

*Persike, West,
unanimous approval*

D. PARKS DRAFT MASTER PLAN

1. An overview slide presentation of the Parks Draft Master Plan was presented by Allison Kelly of O'Dell Engineering. O'Dell has been working with the Department for over a year now on updating the 1999 Parks Master Plan. Ms. Kelly provided an overview of the project's progress. More information about the Parks Draft Master Plan can be found online at <http://www.stancounty.com/parks/executive-summary.shtm>.
2. A brief discussion covered standards on park acreage and the County's general plan, standard level of service of three net acres per 1,000 residents. Demonstrated park acreage was broken down into the five supervisorial districts. Typical acreage size is not a minimum but a recommended figure. The plan however recommended four acres per 1,000 residents. Despite recommendations, development may be limited within the unincorporated areas of Stanislaus County and restricted by zoning regulations. Commissioner West asked if they can check the Quimby Act for the number of acres per residents. He is concerned with the next developer requirements.

ACTIONS & REPORTER

Alison Kelly

E. PUBLIC COMMENTS

1. A member of the public asked where Mono Park stands in regards to its recent sale status. Ms. Milam and Ms. Armstrong were present to express their disagreement on the sale of Mono Park. The residents stated that their

ACTIONS & REPORTER

neighborhood have not been a priority of the County. Mono Park is included in the inventory of the Parks Master Plan, however, there are no specific plans for it at this time. There will be a public hearing scheduled with the Board of Supervisors prior to any sale transactions.

2. A comment was made whether advertisements and announcement efforts of the new Master Plan public meetings were sufficient. Public meetings were also often piggybacked off of existing routine public meetings already in motion such as the MAC or municipal meetings. Government outreach efforts can find public participation a challenge.

F. COMMISSION COMMENTS

ACTIONS & REPORTER

- | | |
|--|------------------------------------|
| <ol style="list-style-type: none"> 1. Commissioner Sanchez asked if a meeting can be set up for the South Modesto group before the comment closing period. It was encouraged for all who are interested in contributing to the plan to attend the currently scheduled meetings because of the limitations within the Master Plan contract as a specific number of meetings have been designated. | <i>Joseph Sanchez/Merry Mayhew</i> |
| <ol style="list-style-type: none"> 2. The WIFI mentioned in the master plan is not a priority at this time, although it can be considered a partnership effort where communities can expand WIFI coverage through federal assistance. The predominant comment came about due to security and cellular coverage in a 24-hour facility. | <i>Zach Keller/Alison Kelly</i> |
| <ol style="list-style-type: none"> 3. The EIR did not have any concerning points other than sound issues associated with future developments. That issue is being addressed. The other flagged item is the geology at Frank Raines on expansion and developments. Frank Raines may require a more in-depth geology study prior to any expansion plans. | <i>Alison Kelly</i> |
| <ol style="list-style-type: none"> 4. A question was raised whether the plan addresses diversity and disadvantaged communities. The master plan has more of an egalitarian approach holding all unincorporated areas to the same standards. Commissioner Keller would like to see more priority focus in the underserved areas and parks in disrepair. | <i>Zach Keller/Alison Kelly</i> |
| <ol style="list-style-type: none"> 5. Consideration for homeless issues in parks and safe transportation/routes were asked to be included in the master plan. The two issues were taken into consideration, however, the homelessness issue is a widespread issue that the County as a whole is making an effort on. The plan could explore further on adequate transportation and safe walking routes around the parks. The best practices chapter can emphasize more on these details and include the County's approach on the homelessness issue as a whole. | <i>Ed Persike/Alison Kelly</i> |

G. STAFF HIGHLIGHTS

ACTIONS & REPORTER

- | | |
|---|---------------------|
| <ol style="list-style-type: none"> 1. Camping went over well through the holidays. Woodward Reservoir was close to capacity during the Christmas and New Year's holidays. | <i>Merry Mayhew</i> |
| <ol style="list-style-type: none"> 2. La Grange has erosion control work happening at this time. The Stuckfest event in September had over 1,000 attendants. There will be another 4x4 event coming up. | |
| <ol style="list-style-type: none"> 3. Fairview Park was vandalized a few times. Staff has been working on keeping the project site trip hazard-free. Commissioner Sanchez will also inquire with his neighborhood watch group about the vandalism incidents. The grand opening of the park has been set for February 3rd at 10:00 a.m. Everyone is invited. | |
| <ol style="list-style-type: none"> 4. Mono Park has had a great amount of trash litter with the homeless accumulating in the park. Often staff would need to arrange a separate time from their landscape maintenance routine to obtain the right equipment to haul off the accumulated trash. | |
| <ol style="list-style-type: none"> 5. The Salida community area had replacement signs ordered for defaced conditions of existing signs. Several requests were also made related to the vehicle access area by the concession stand and additional signs. The Salida Rotary Club donated 24 trees. | |

6. Frank Raines OHV sold out during the Christmas/New Year's holiday.
7. The Master Plan is on track. Community meetings are being held throughout January. The final plan is anticipated to go to the Board in May 2018.
8. The Board has approved the contract with the selected vendor for the Modesto Reservoir fuel pump project. The anticipated completion date is by the end of April.
9. The Grayson Road firing range project is moving along smoothly with a final work plan to come out in January. Lead mining may be planned for the summer if there are no delays.

H. OLD BUSINESS

1. Commissioner Persike asked where the status is on the previously mentioned concern of the road conditions out at Frank Raines Regional Park. Mr. Persike was able to discuss the issue with the Public Works director. The main issue can have a major cost impact. At this time, there is no update on the issue.
2. Mr. Persike announced that this will be his last meeting and thanked the group for their efforts in making a difference.

I. ADJOURNMENT & NEXT MEETING

There being no further discussion, the meeting was adjourned. The next meeting of the Parks Commission will be held on, **Thursday, February 8, 2018, at 5:00 p.m. at 3800 Cornucopia Way, Stanislaus Building-2nd Floor, Modesto, CA 95358.**

PREPARED BY: Mae Song, Park Commission Secretary

(209) 525-6770

Agendas can also be found online at <http://www.stancounty.com/parks/parks-recreation-commission.shtml>, subject to staff's ability to post prior to the meeting. Materials related to an item on this Agenda submitted to the Commission after distribution of the agenda packet are available for public inspection during normal business hours at the main office of the Department of Parks and Recreation, 3800 Cornucopia Way, Suite C, Modesto, CA 95358.

WOODWARD AND MODESTO RESERVOIRS

- Park Maintenance staff are working on maintenance projects to get ready for the upcoming summer season.
- Camping has been fairly steady over the holidays.

La Grange OHV:

- Park maintenance staff have been working on erosion control issues, track prep, and fence repair at the La Grange OHV Park.
- A Stuckfest event was held December 29 – 31, 2017 with approximately 1,270 visitors in attendance.
- There is a 4x4 event scheduled for February 11th and 12th.

COMMUNITY PARKS, LAIRD PARK, & FRANK RAINES

Community Parks:

- Fairview Park – Park staff has added soil to the sides of the walkways to reduce trip hazards. Restroom continues to be vandalized with the most recent incidents to include damaging the light sensor within the restroom, a small object was placed in the door to jam causing the door hinge to become bent when closed, which damaged the auto lock system. Paving, curbs and striping has been completed. The grand opening of the park is set for February 3, 2018 at 10 a.m.
- Mono Park – Park staff recently removed nearly a ton of trash that were accumulated by the homeless.
- Broadway Park – A new rules and regulations sign has replaced a defaced one. Another larger sign is on order to be placed near the shade structure. A scope of work and costs are being developed to close the vehicle entrance at the concession stand with a combination of bollards and chains.
- Park Staff worked with Salida Rotary to meet their goal of planting one tree per member this year in Salida parks. The trees have been donated by the Salida Rotary in the value of \$1,423.95. All 24 trees were planted on December 1st.

Frank Raines Park/Campground:

- Frank Raines OHV has had a good start to the year with both Thanksgiving and the Christmas/New Years holidays selling out the full hookup campgrounds.

PARKS ADMINISTRATION

- Parks Master Plan is on track. Community meetings will be held throughout January and we anticipate taking the final plan to the BOS for adoption in May 2018.
- Modesto Reservoir Fuel Pump Project – The Board is scheduled to approve the contract with the vendor on January 9th and we anticipate the project will be completed by the end of April, weather permitting.
- Grayson Road Firing Range Cleanup Project – We anticipate receiving the final work plan in January and will be working with DTSC to ensure that they have no concerns with the plan prior to going out to bid for the cleanup.

Stanislaus County Parks Master Plan Update

Draft Document Review Presentation for the

Stanislaus County Parks and Recreation
Commission

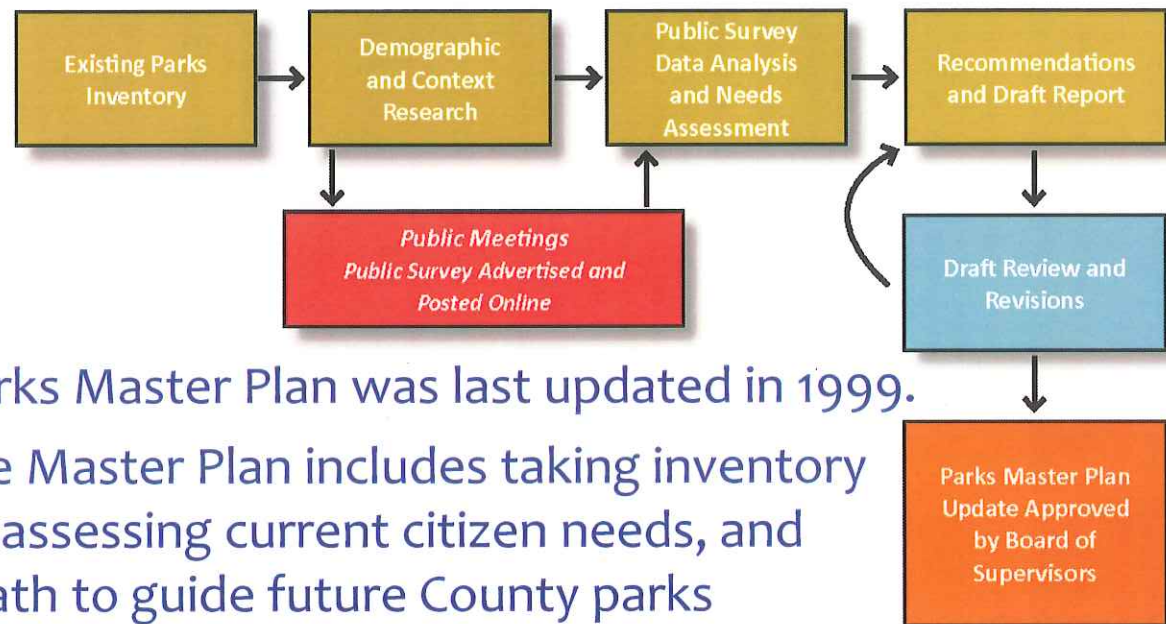
January 11th, 2018



STANISLAUS COUNTY
PARKS & RECREATION

Introduction to the Project

Project Process



- The Stanislaus County Parks Master Plan was last updated in 1999.
- The current update to the Master Plan includes taking inventory of existing County Parks, assessing current citizen needs, and planning an actionable path to guide future County parks development.
- Following one year of in-depth consulting with County staff and members of the public, the current draft posted for public review is at 90% completion.



STANISLAUS COUNTY
PARKS & RECREATION

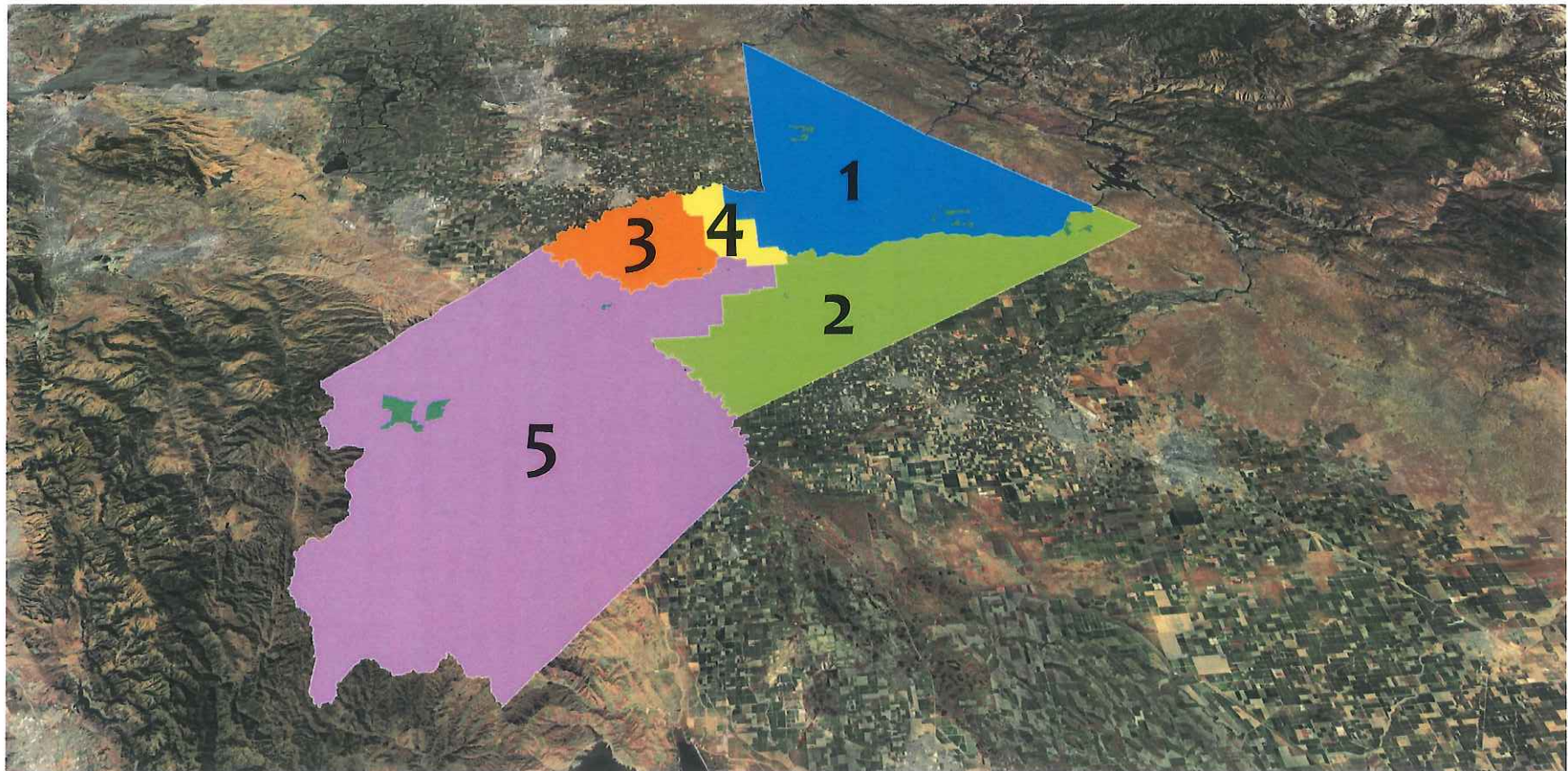
County Parks and Open Space Assets Summary

- 5 Regional Parks
- 22 Neighborhood Parks
- 8 Special Interest Parks
- 7 Miscellaneous Parks and Open Space Assets
- 28 Non-Park Facilities (Libraries, Buildings, and Other Assets)



STANISLAUS COUNTY
PARKS & RECREATION

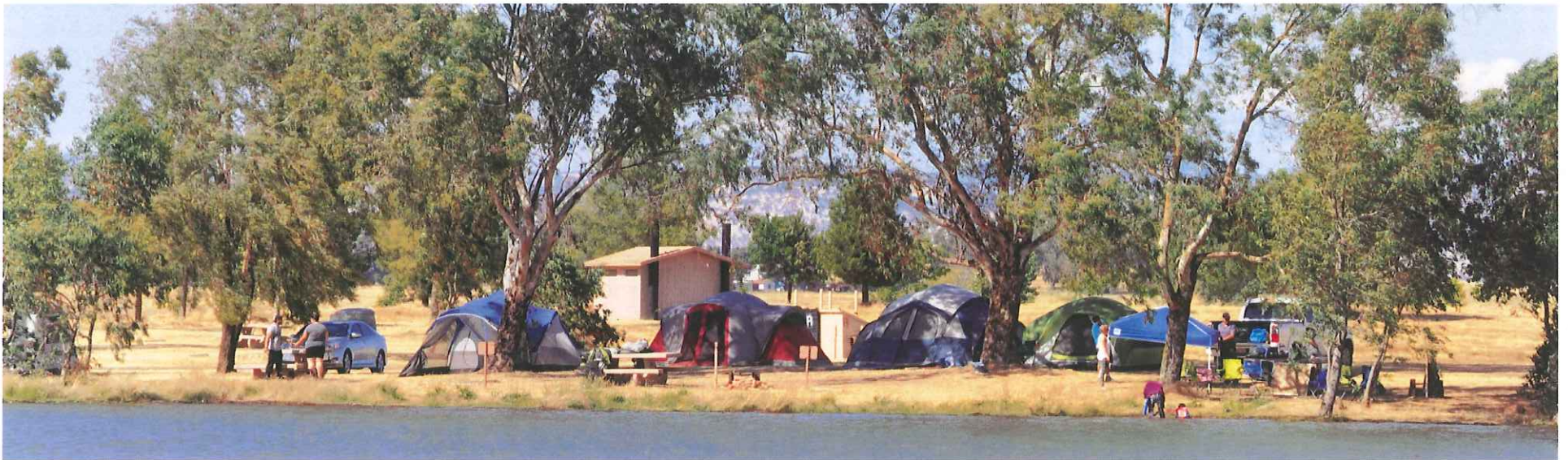
County Parks by Supervisorial District



STANISLAUS COUNTY
PARKS & RECREATION

County Parks and Open Space Assets by District

- **District 1:** 6 Parks, 1,843.62 acres total
- **District 2:** 13 Parks, 777.52 acres total
- **District 3:** 8 Parks, 56.53 acres total
- **District 4:** 5 Parks, 514.89 acres total
- **District 5:** 10 Parks, 3,285.69 acres total



STANISLAUS COUNTY
PARKS & RECREATION

County Parks Acreage Level of Service

County Parks Acreage and General Plan Level of Service Standard Assessment

Parks Level of Service Standard per Stanislaus County General Plan:

- *Three net acres of developed neighborhood parks per 1,000 residents in unincorporated Stanislaus County.*

**Current Acres of Developed
Neighborhood Parks Within
Unincorporated County**

» 106 Acres

**Current Population Within
Unincorporated County:**

» 100,860

**Current Parks Acreage
per 1,000 Residents
of Unincorporated
County:**

» 1 Acre per 1,000
Residents

**Acreage Required to Meet Parks Level of
Service Standard:**

» 200 Acres

Neighborhood Park Typical Size:

» 5-10 Acres

**Estimated Neighborhood Parks Required
to Meet Parks Level of Service Standard:**

» 20-40 Neighborhood Parks



STANISLAUS COUNTY
PARKS & RECREATION

Public Outreach Component: Public Meetings

- Public meetings were conducted during June and July 2017.
- Public meeting dates were advertised in both English and Spanish across multiple platforms: on the County's website, via social media pages, in local newspapers and publications, and via personal invitations to stakeholders and community groups.



STANISLAUS COUNTY
PARKS & RECREATION



STANISLAUS COUNTY
PARKS & RECREATION



**Pick a
meeting to
attend...**

6.20.17, 6 pm
Bianchi Community Center
110 S. 2nd Avenue
Oakdale, CA 95361

6.27.17, 7 pm
Salida Library Community
Room
4855 Sisk Road
Salida, CA 95368

6.29.17, 6 pm
Stanislaus County Ag Center
3800 Cornucopia Way
Harvest Hall (DE)
Modesto, CA 95358

7.13.17, 6 pm
Stanislaus County Ag Center
3800 Cornucopia Way
Harvest Hall (DE)
Modesto, CA 95358

7.20.17, 7 pm
Keyes Community Service
District Office
3800 Cornucopia Way
Harvest Hall (DE)
Modesto, CA 95358

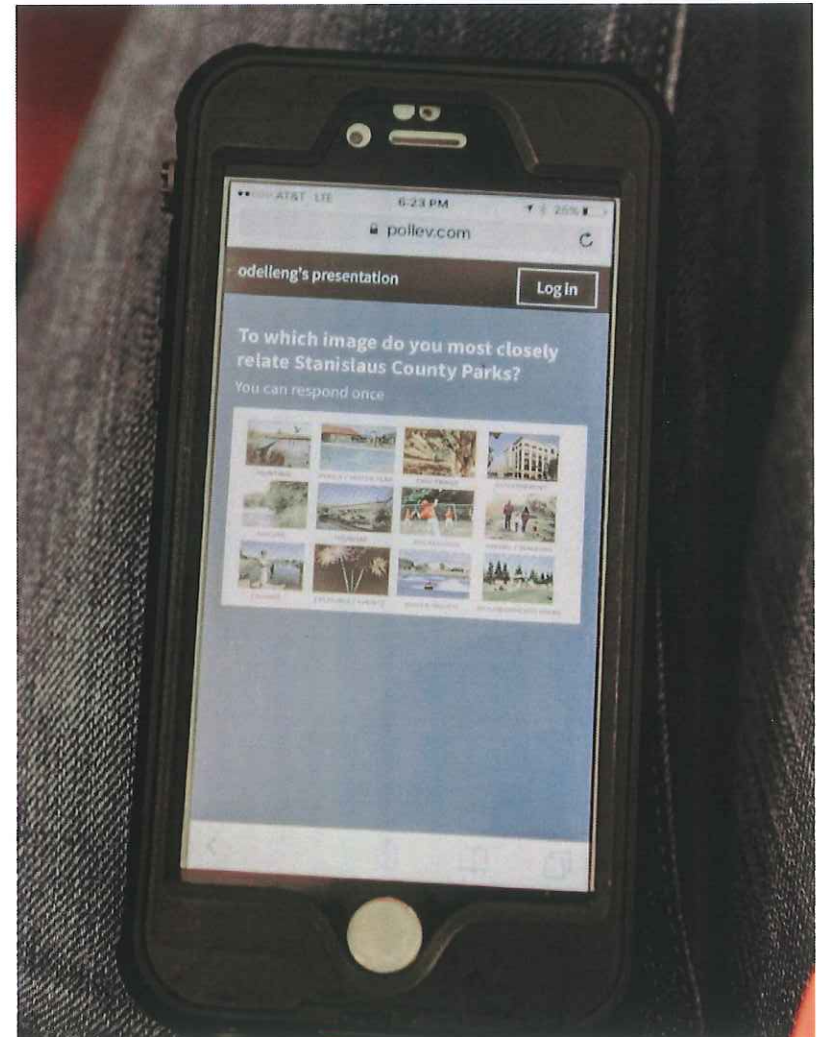
PUBLIC MEETINGS FOR PARKS MASTER PLAN

The Department of Parks and Recreation along with O'Dell Engineering will be hosting Public Meetings for the next 20 year Park's Master Plan. We encourage the public to attend this important meeting that will lay out the future of parks for Stanislaus County.

WWW.STANCOUNTYPARKS.COM / [@STANCOUNTYPARKS](https://twitter.com/STANCOUNTYPARKS)

Public Outreach Component: Gathering Input

- 49 Attendees at public meetings provided feedback via a smartphone-enabled online polling survey, which generated discussion for each meeting.
- 614 Respondents completed the full survey posted on the County's website during June and July 2017.



STANISLAUS COUNTY
PARKS & RECREATION

Public Outreach Component: Needs Identified

What do respondents like most about County Parks?

- Water Access/Swimming Options
- Walking/Hiking/Biking Trails
- Picnic Areas/BBQs

What do respondents like least about County Parks?

- Cleanliness/Maintenance of Parks
- Homelessness and Crime in Parks
- Lack of Restrooms in Parks

Trends in Comments Provided:

- Respondents value the quantity of County Parks available and the varied options for activities.
- Respondents are unhappy with the experience at campgrounds, namely due to perceived insufficient regulation.
- Park visitors would like to see an overall modernization of park features, and encouraged leadership to “think outside the box” in planning future parks.



STANISLAUS COUNTY
PARKS & RECREATION

Best Practices & Design Guidelines

Best Practices Chapter

- Synthesizes public feedback on important issues with current best practices.
- Utilizes benchmark regional Counties to compare Stanislaus County current practices and metrics to our neighbors.
- References “model” communities and parks districts to recommend forward-thinking best practices.

Design Guidelines Chapter

- Sets forward design guideline recommendations in the following categories:
 - User Friendliness & Accessibility
 - Aesthetic Guidelines
 - Technical Assets Guidelines
 - Site Furnishings Guidelines



STANISLAUS COUNTY
PARKS & RECREATION

Parks Recommendations

2017 Inventory: Neighborhood Parks	District	Recommendations
Bonita Park & Pool	5	<ul style="list-style-type: none"> Add tot lot play area Construct outdoor fitness stations for adult recreation Construct at least (1) shade shelter with picnic tables Explore options for community garden area Renovate pool and construct splash play area Renovate restroom facilities to ensure ADA and health code compliance
Bonita Ranch Park	2	<ul style="list-style-type: none"> Renovate basketball court Construct outdoor fitness stations for adult recreation Build group BBQ Upgrade playground as inclusive play space
Burbank-Paradise Park/Hall	3	<ul style="list-style-type: none"> Add (1) shade shelter with picnic tables and group BBQ Add multi-use court adjacent to PAL headquarters building for use for basketball, tennis, or other sports
County Center 1: Courthouse Lawn Park	4	<ul style="list-style-type: none"> Redesign park to satisfy modern needs of downtown gathering space; consider design typical of a plaza, with specific design qualities to discourage loitering and to support events in the plaza Ensure night lighting complies with state and national standards and effectively lights all pedestrian pathways
Countrystone Park	3	<ul style="list-style-type: none"> Construct dog park (to be fenced, with separate areas for small and large dogs, drinking fountains, dog waste disposal stations, shade and seating) Build walking path around park Construct outdoor fitness stations for adult recreation
Empire Community Park & Regional Water Safety Training Center	1	<ul style="list-style-type: none"> Renovate restroom facilities to ensure ADA compliance Build walking path around park; connect existing paths with extensions along north and east borders of park Add shade toppers to playground equipment Build shaded seating areas adjacent to playgrounds Construct outdoor fitness stations for adult recreation Upgrade playground as inclusive play space

2017 Inventory: Regional Parks	District	Recommendations
Woodward Reservoir Regional Park	1	<ul style="list-style-type: none"> Expand North side for special events and potential camping Construct a large special events outdoor amphitheater with amenities for performing groups and for use for educational and other special events Upgrade all roadways to current County road standards (paving, striping, signage, etc.) Create trail system for walkers, hikers, mountain bikers, and equestrians, with educational signage and trail markers Increase staffing and equipment to manage litter and grounds management Bayview Point: Add underground power source, add new well (to service restroom and double-lettered camp areas), renovate/construct new ADA compliant showers and restrooms and ensure handicapped vehicle parking accessibility to restrooms Bayview Point: Add 40'x 60' event awning with expanded BBQ and picnic facilities northeast of Area T Bayview Point: Add campgrounds; improvements to include potable water at 2-3 locations throughout, picnic tables/fire rings/BBQ amenities, ADA compliant restroom and shower located centrally, unpaved road access, and trees with irrigation throughout campground Bayview Point: Construct new day-use area between existing campgrounds L and M; amenities to include ADA compliant vault toilets, all picnic and BBQ amenities, at least 2 potable water locations, paved access road and parking lot, and trees with irrigation throughout Add trees and irrigation throughout high-activity areas to provide shade for park users Add (1) additional entrance station on the north side Add (1) additional entrance station on Dorsey Road or property adjacent to current entrance station Refurbish and add an additional (4) lanes of dumping access to existing RV dump station Within undeveloped camping areas, select a location for an RV water station and install water station Expand the Cocklebur day-use area with new amenities Upgrade or replace all restrooms and showers with larger capacity facilities Potential for additional wastewater treatment plant onsite as needed



STANISLAUS COUNTY
PARKS & RECREATION

Programming Recommendations

Programming Recommendations

- Develop and implement an official parks partner program.
- Increase partnerships with regional specialty hobbyists.
- Increase regular revenue by hosting ongoing mid-size special events at County parks.

Marketing & Advertising Recommendations

- Utilize online presence effectively.
- Publicize availability of venues for weddings and outdoor educational events.
- Promote existing County-sponsored recreation programming across all social media and web platforms.
- Initiate a donation marketing campaign.



STANISLAUS COUNTY
PARKS & RECREATION

Maintenance Recommendations

Develop Maintenance Standards and Specifications

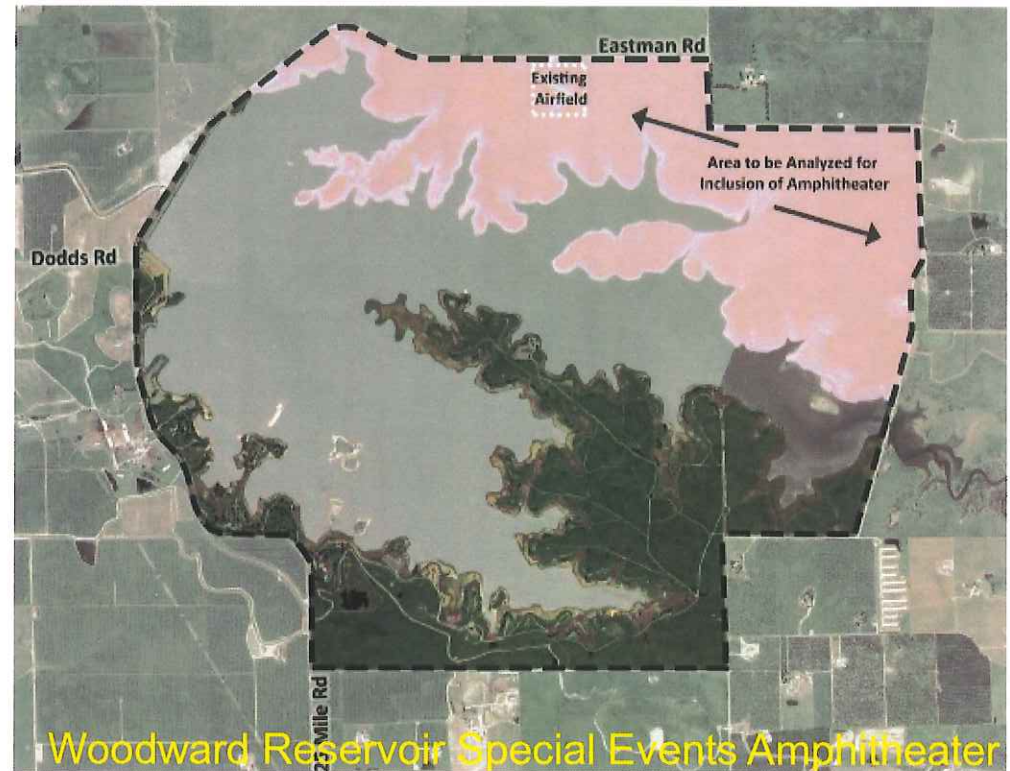
- Standards shall be set forth which are results-focused and outcome-driven.
- Specifications shall be consistent with industry best practices.
- Maintenance standards and specifications shall be approved by the County Board of Supervisors.
- County Code to be updated to reflect current state mandate regarding landscape irrigation water usage.
- Low Impact Development standards to be established for parks landscapes.
- Parks development standards, specifications, and details to be established.



STANISLAUS COUNTY
PARKS & RECREATION

Priority Recommendations: Project Specific Plans

1	Small amphitheaters at all 5 Regional Parks
2	Basso Bridge River & Fishing Access Environmental and Site Improvements
3	Bonita Pool Renovations and Splash Play Addition
4	Dog Parks Developed at Priority Neighborhood Park Locations (4)
5	Fencing Upgrades at all Cemeteries
6	J-59 Fishing Access Parking Lot and Path
7	La Grange Historic District Master Plan
8	Laird Regional Park Destination Dog Park
9	Modesto Reservoir Footrace/Bike Race Circuit
10	Modesto Reservoir Paving Project
11	Re-brand RC Airfields to Support Use by Drone Pilots
12	Salida Proposed Park (Currently Undeveloped)
13	Signage and Entry Design Installed with Consistent Aesthetic across all County Facilities
14	WiFi Expansion to all 5 County Regional Parks
15	Woodward Reservoir Regional Park Special Events Amphitheater

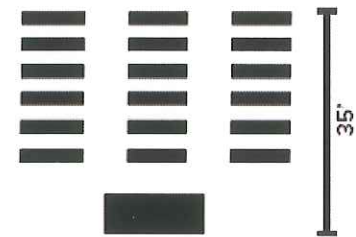


Woodward Reservoir Special Events Amphitheater



STANISLAUS COUNTY
PARKS & RECREATION

20-Year CIP Planning: Project Specific Plans



STANISLAUS COUNTY
PARKS & RECREATION

20-Year CIP Planning: Project Specific Plans

Recommended Projects: 0-5 Year			
	Project Name	Estimated Project Budget	Total 0-5 Year Project Costs
1	Bonita Pool Renovations and Splash Play Addition	\$950,000	\$3,050,000
2	J-59 Fishing Access Parking Lot and Path	\$1,000,000	
3	Laird Regional Park Destination Dog Park	\$250,000	
4	Modesto Reservoir Footrace/Bike Race Circuit	\$250,000	
5	Re-brand RC Airfields to Support Use by Drone Pilots	\$50,000 ea/\$100,000 total	
6	Fencing Upgrades at all Cemeteries	\$500,000	

Recommended Projects: 5-15 Year			
	Project Name	Estimated Project Budget	Total 5-15 Year Project Costs
1	Amphitheaters at 4 Regional Parks	\$3,000,000	\$59,800,000
2	Dog Parks Developed at Priority Neighborhood Park Locations (4)	\$187,500 ea/\$750,000 total	
3	La Grange Historic District Master Plan	\$200,000	
4	Modesto Reservoir Paving Project	\$5,000,000	
5	Signage and Entry Design Installed with Consistent Aesthetic across all County Facilities	\$850,000	
6	WiFi Expansion to all 5 County Regional Parks	\$25,000,000	
7	Woodward Reservoir Regional Park Special Events Amphitheater	\$25,000,000	

Recommended Projects: 15-20 Year			
	Project Name	Estimated Project Budget	Total 15-20 Year Project Costs
1	Basso Bridge River & Fishing Access Environmental and Site Improvements	\$1,500,000	\$3,000,000
2	Salida Proposed Park (Currently Undeveloped)	\$1,500,000	

Total 20-Year Estimated Project Costs =
\$68,650,000



STANISLAUS COUNTY
PARKS & RECREATION

Capital Improvement & Financial Planning

A successful plan for the implementation of the recommendations of this Parks Master Plan includes:

1. Identifying dynamic funding sources for each project, and a combination of funding mechanisms where practical.
2. Developing partnerships which will contribute to the realization of increased revenue and cost offsets for parks and programming.
3. Increase of development-related parks funding requirements to at least 4 acres per 1,000 residents as a baseline requirement.



STANISLAUS COUNTY
PARKS & RECREATION

Program Environmental Impact Report (PEIR)

- California Environmental Quality Act (CEQA) requires production of an Environmental Impact Report (EIR) to report the impacts of discretionary government actions (such as the Parks Master Plan) on the environment.
- What is a Programmatic EIR (PEIR)?
- Range of Park Improvement Actions Addressed in the PEIR
- Using the PEIR to Simplify Future Review of Park Improvements



STANISLAUS COUNTY
PARKS & RECREATION

Program Environmental Impact Report Component

- PEIR Process to Date
- Public Review Period
- Steps in Finalizing the EIR



STANISLAUS COUNTY
PARKS & RECREATION

Stanislaus County Parks Master Plan Update

Questions/Comments

Review the Parks Master Plan and PEIR and provide feedback at:
www.stancounty.com/parks



STANISLAUS COUNTY
PARKS & RECREATION