

Crows Landing Corridor Plan

Stanislaus County proposes the Crows Landing Corridor Plan (Plan), which is needed to determine the feasibility of inter-jurisdictional transportation connectivity improvements along the Crows Landing Road corridor between Interstate 5 (I-5) and State Route (SR) 99 (planning area). The Plan area includes Fink Road from SR 33 to I-5. The Plan is needed to support and improve the mobility of goods and people to and from the proposed Crows Landing Logistics Center (formerly a naval air station) in southwestern Stanislaus County.

The Corridor Plan is intended to support Stanislaus County's transportation and economic development vision and general plan policies as they relate to the southwest County between Patterson and Newman. The Plan also supports the transportation and economic development goals of the cities of Patterson, Newman, and other nearby communities in the County.

The Plan will involve analyzing and providing complete street alternatives that will help address the need to improve multimodal access, reduce traffic congestion and associated greenhouse emissions, and increase safe connections from the surrounding communities to area employment centers. A key component of this project includes robust community engagement through a variety of public outreach methods, interagency coordination and involvement, and community consensus building.

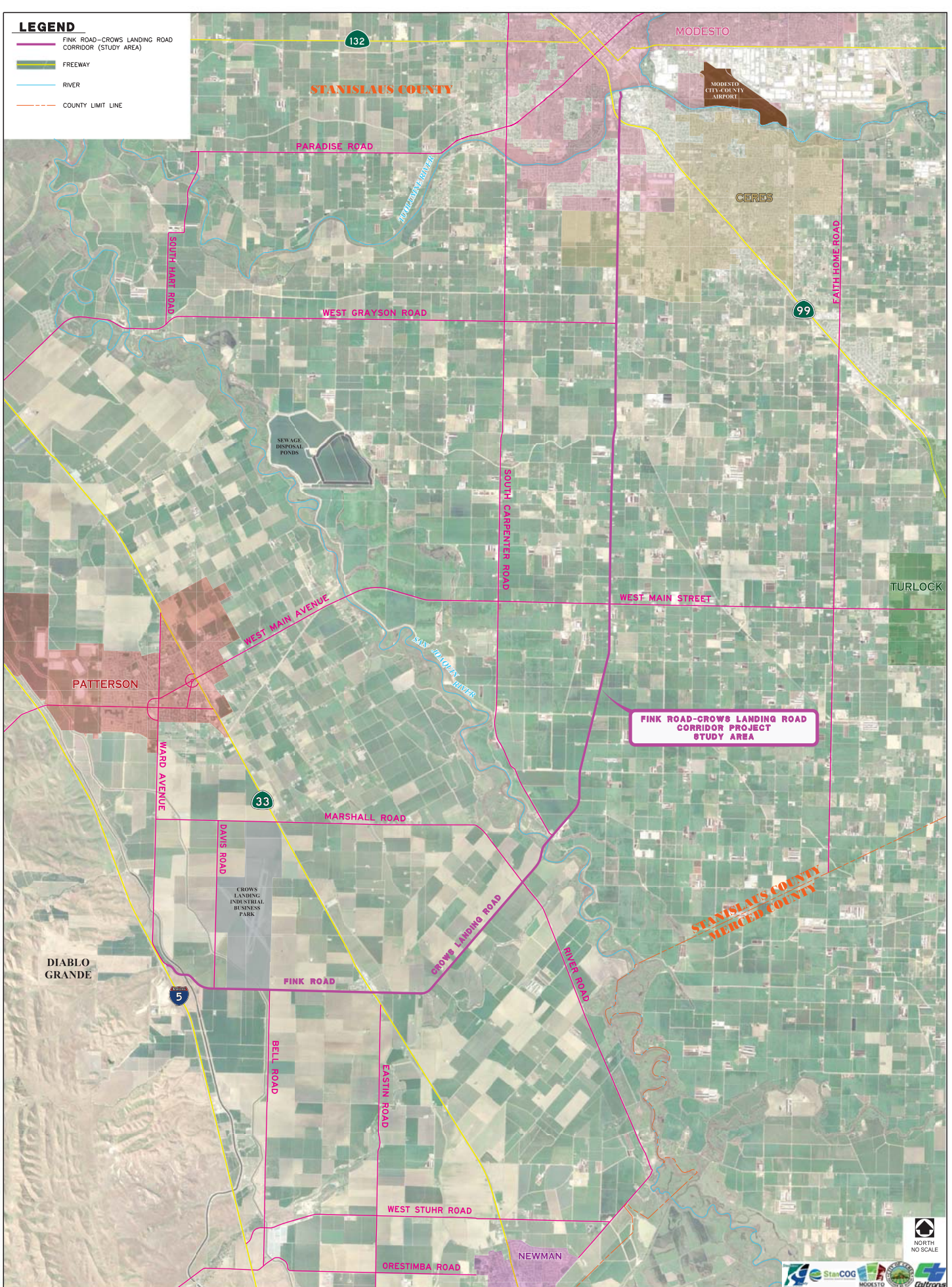
The Crows Landing Road corridor is a major sub-regional connector in southwestern Stanislaus County, linking I-5 eastward through more rural areas to the communities along SR 99. The planning area is approximately 22 miles between the Fink Road interchange at I-5 near Crows Landing and the Crows Landing interchange at SR 99 south of downtown Modesto.

Submitted by:

Matt Machado, PE, LS
Public Works Director
Stanislaus County

LEGEND

- FINK ROAD-CROWS LANDING ROAD CORRIDOR (STUDY AREA)
- FREEWAY
- RIVER
- COUNTY LIMIT LINE



Crows Landing Corridor Study Public Workshop Tuesday, February 28, 2017

Stanislaus County
Public Works Department
1010 I Street, 3rd Floor
Modesto, CA 95354



Join us to learn more about the
Crows Landing Corridor Study.
We will be holding a public
workshop:

Tuesday, February 28, 2017

6:00 PM - 8:00 PM

Stanislaus County Agricultural
Center's Harvest Hall
3800 Cornucopia Way
Modesto, CA 95358

For more information please contact
Kendall Flint at (650) 455-1201
or via email at kflint@rgs.ca.gov

Únase a nosotros para aprender más
sobre el Crows Landing Corredor
Estudio. Nosotros Llevará a cabo
una taller:

Martes, 28 de febrero de 2017

6:00 PM - 8:00 PM

Stanislaus County Agricultural
Center's Harvest Hall
3800 Cornucopia Way
Modesto, CA 95358

Para obtener más información,
póngase en contacto
Kendall Flint at (650) 455-1201
or via email at kflint@rgs.ca.gov