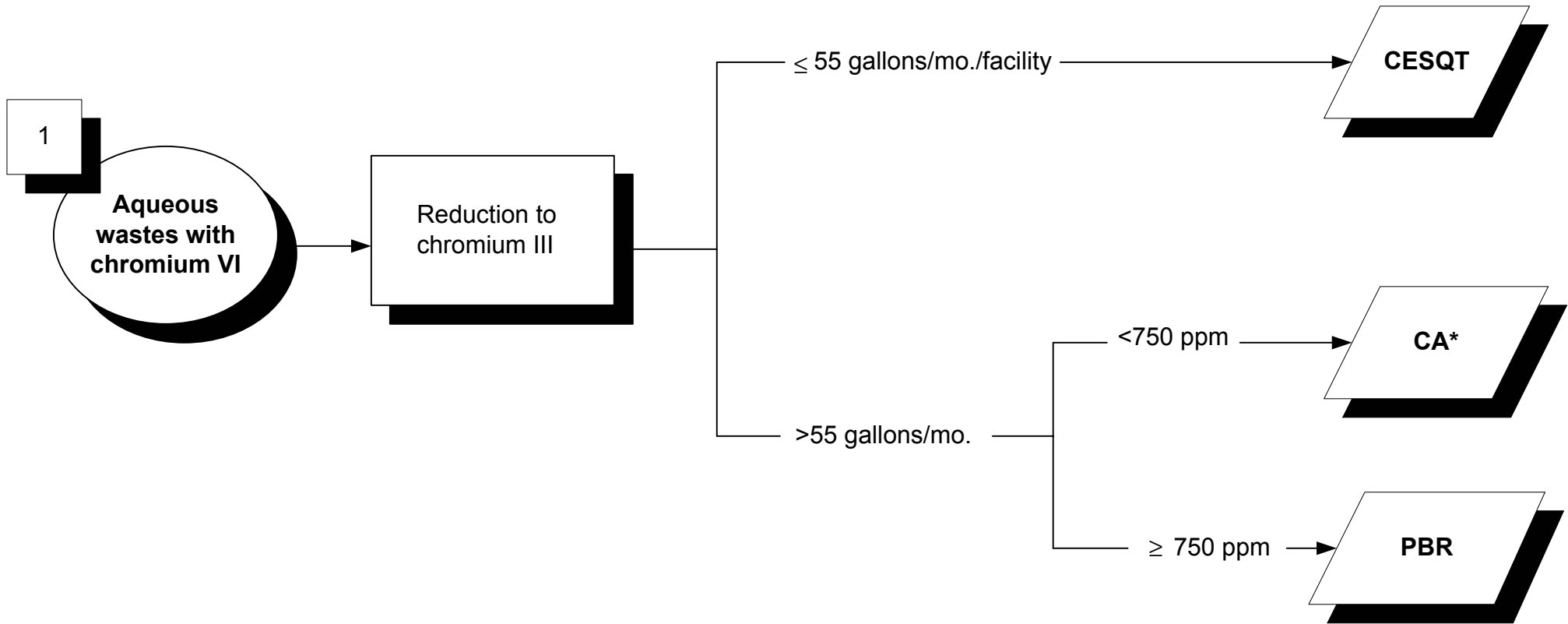


Onsite Tiered Permitting - Flowchart

(For non-RCRA or exempt hazardous waste facilities conducting onsite treatment.)



CESQT - Conditionally Exempt Small Quantity Treatment (Health and Safety Code (HSC § 25201.5(a))

CESW - Conditionally Exempt Specified Wastestream (HSC § 25201.5(c))

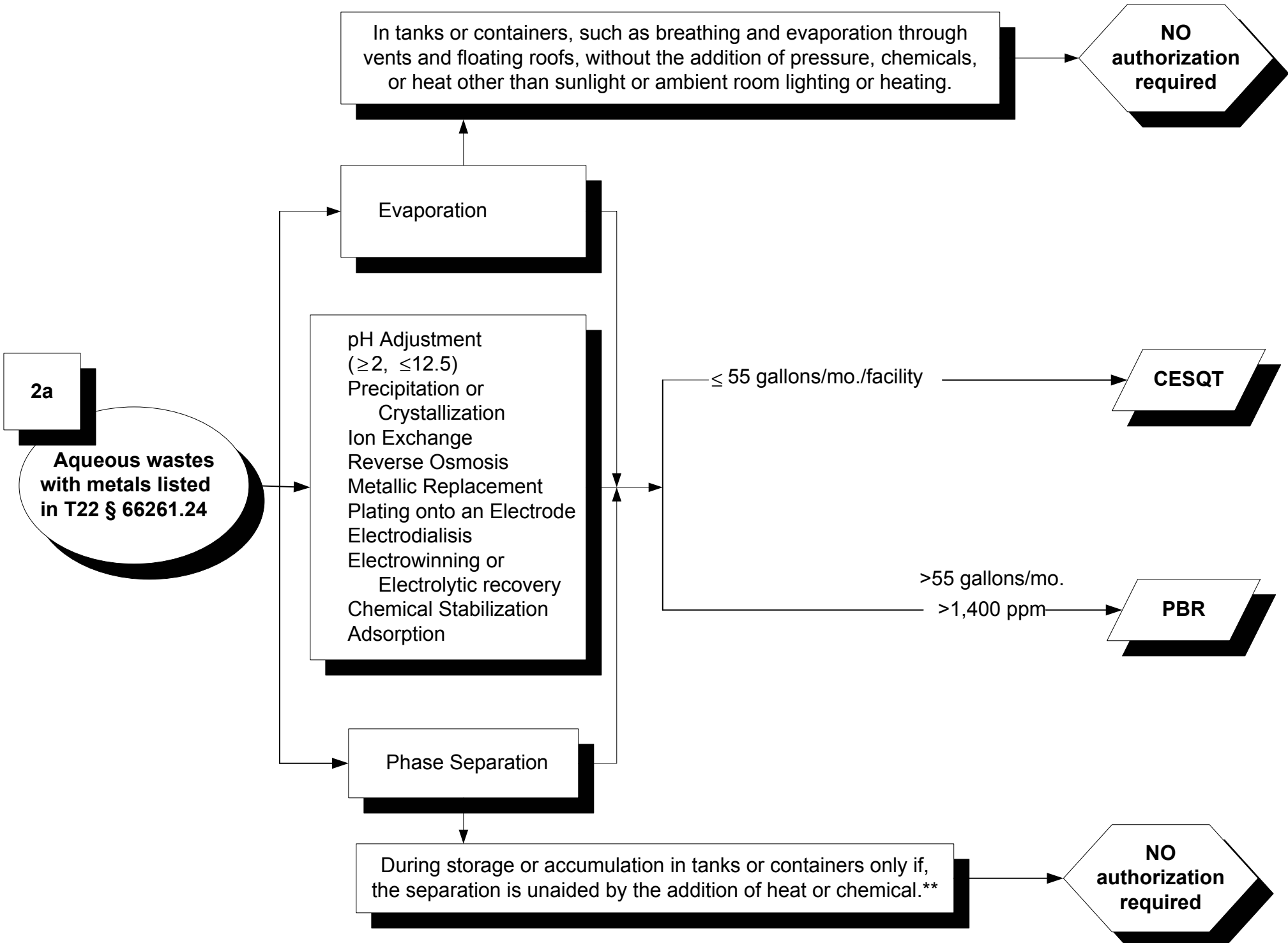
CEL - Conditionally Exempt-Limited (HSC § 25201.14)

CECL - Conditionally Exempt Commercial Laundries (HSC § 25144.6(c))

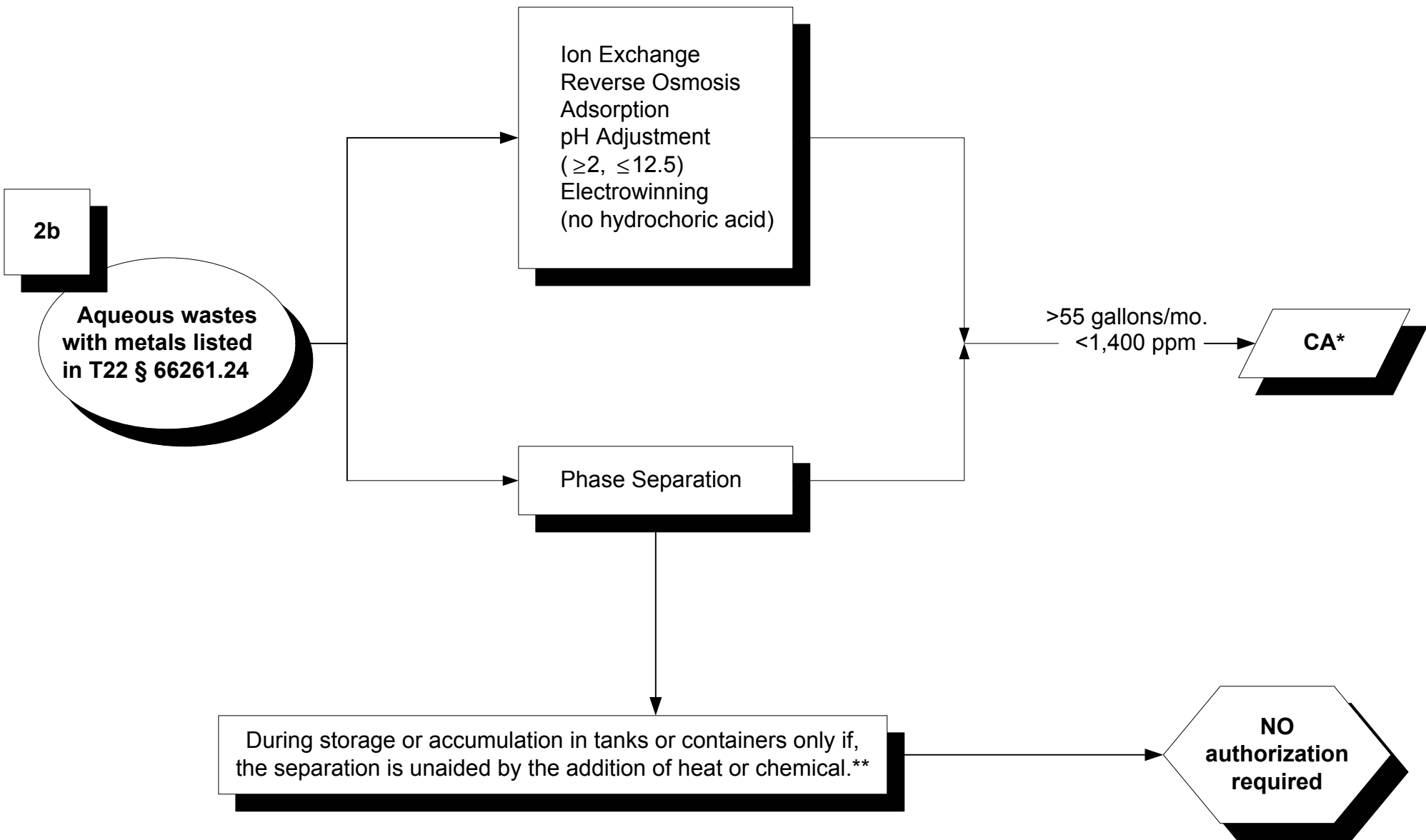
CA - Conditional Authorization (HSC § 25200.3)

PBR - Permit by Rule (Title 22, CCR, Div. 4.5, Chapter 45)

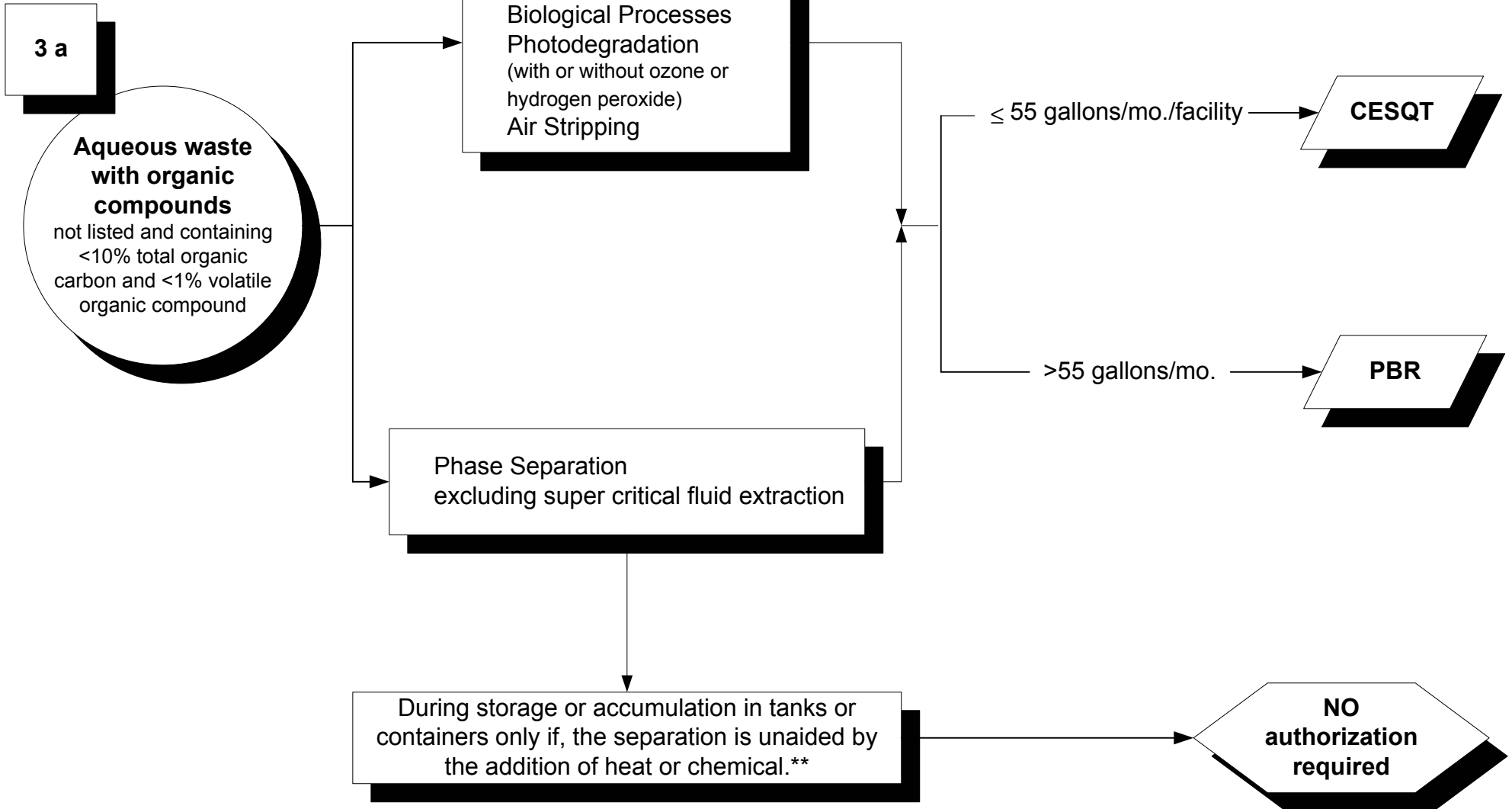
*Must be hazardous solely due to this characteristic



**Closed except adding/removing (T22, § 66265.173)

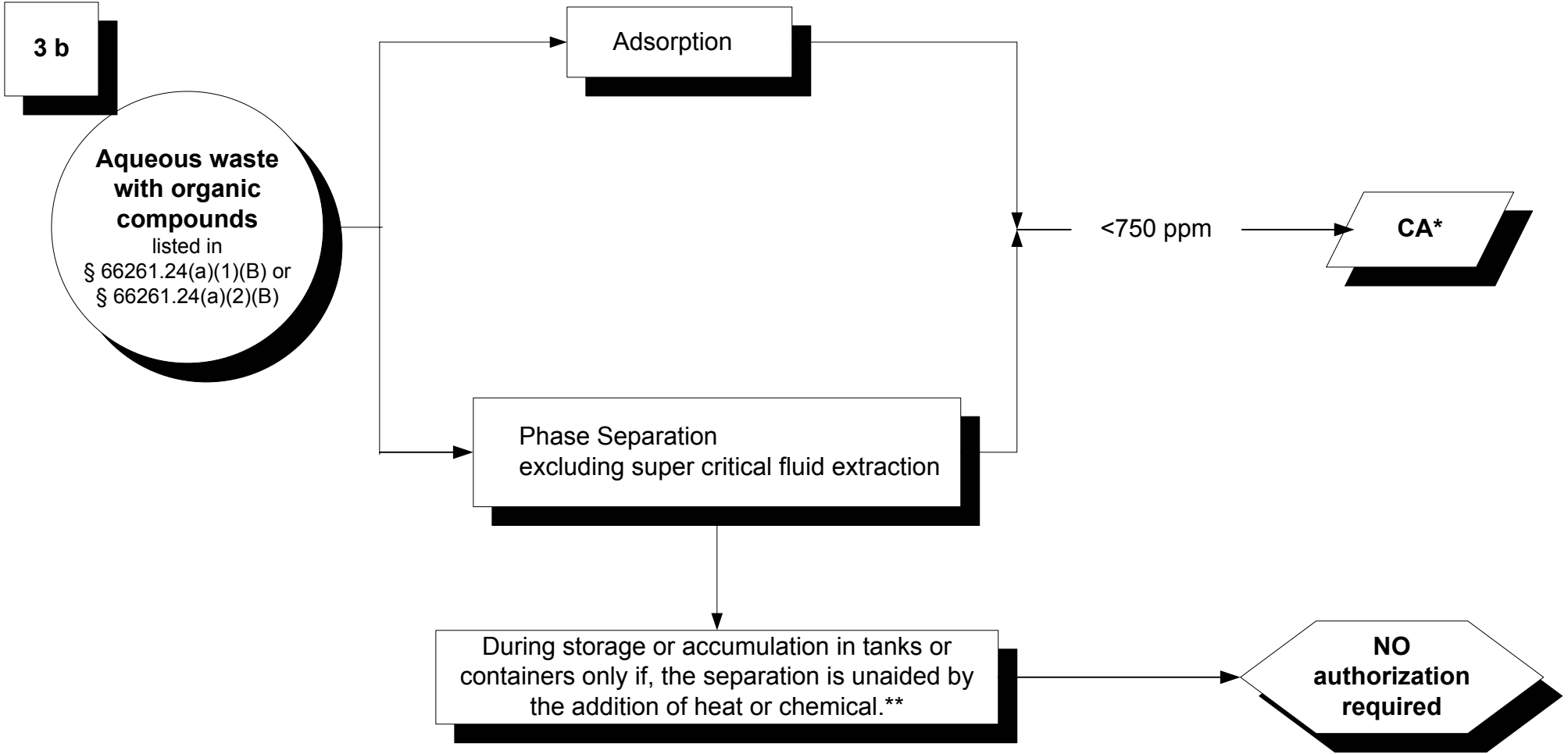


*Must be hazardous solely due to this characteristic
 **Closed except adding/removing (T22, § 66265.173)

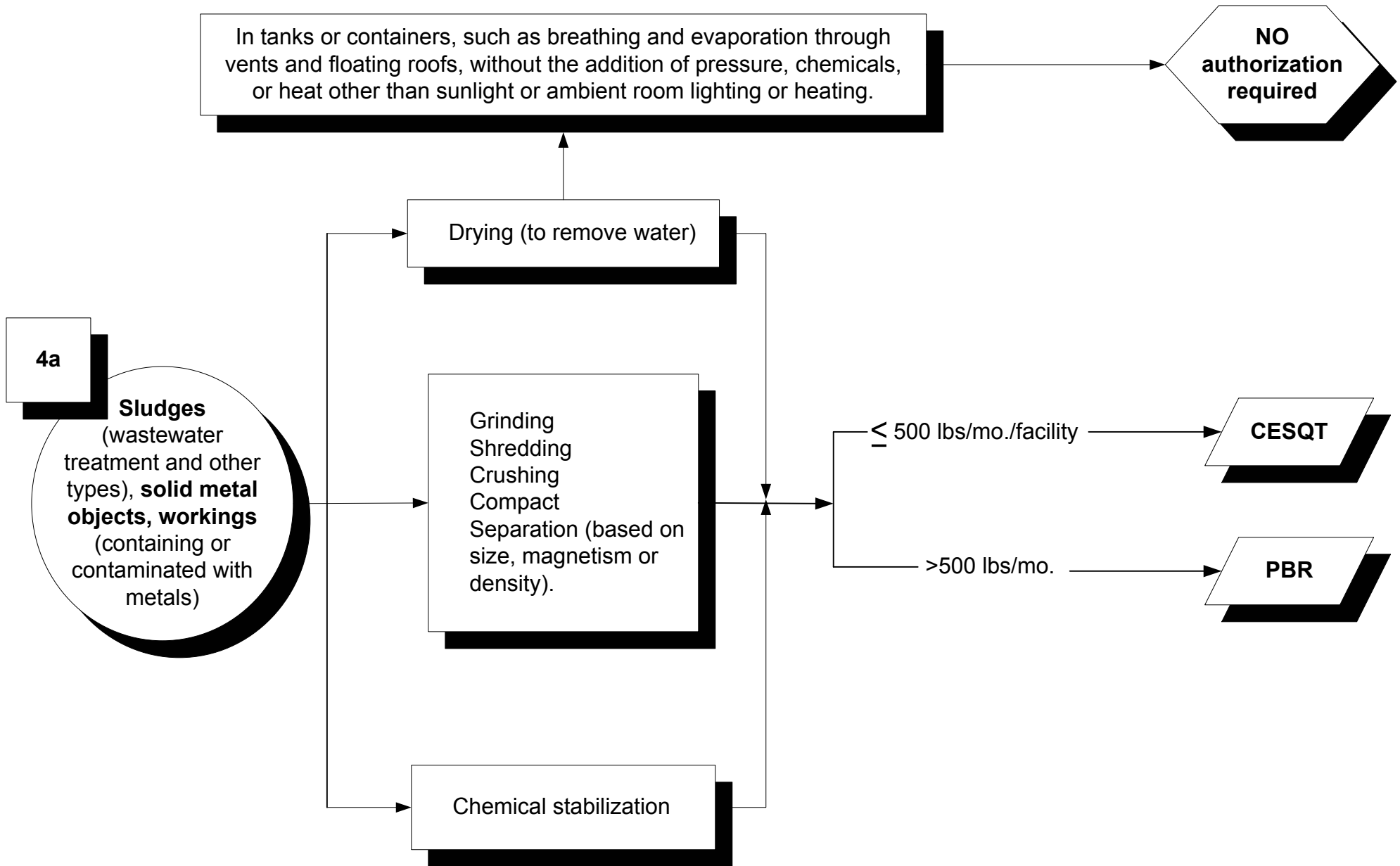


*Must be hazardous solely due to this characteristic

**Closed except adding/removing (T22, § 66265.173)

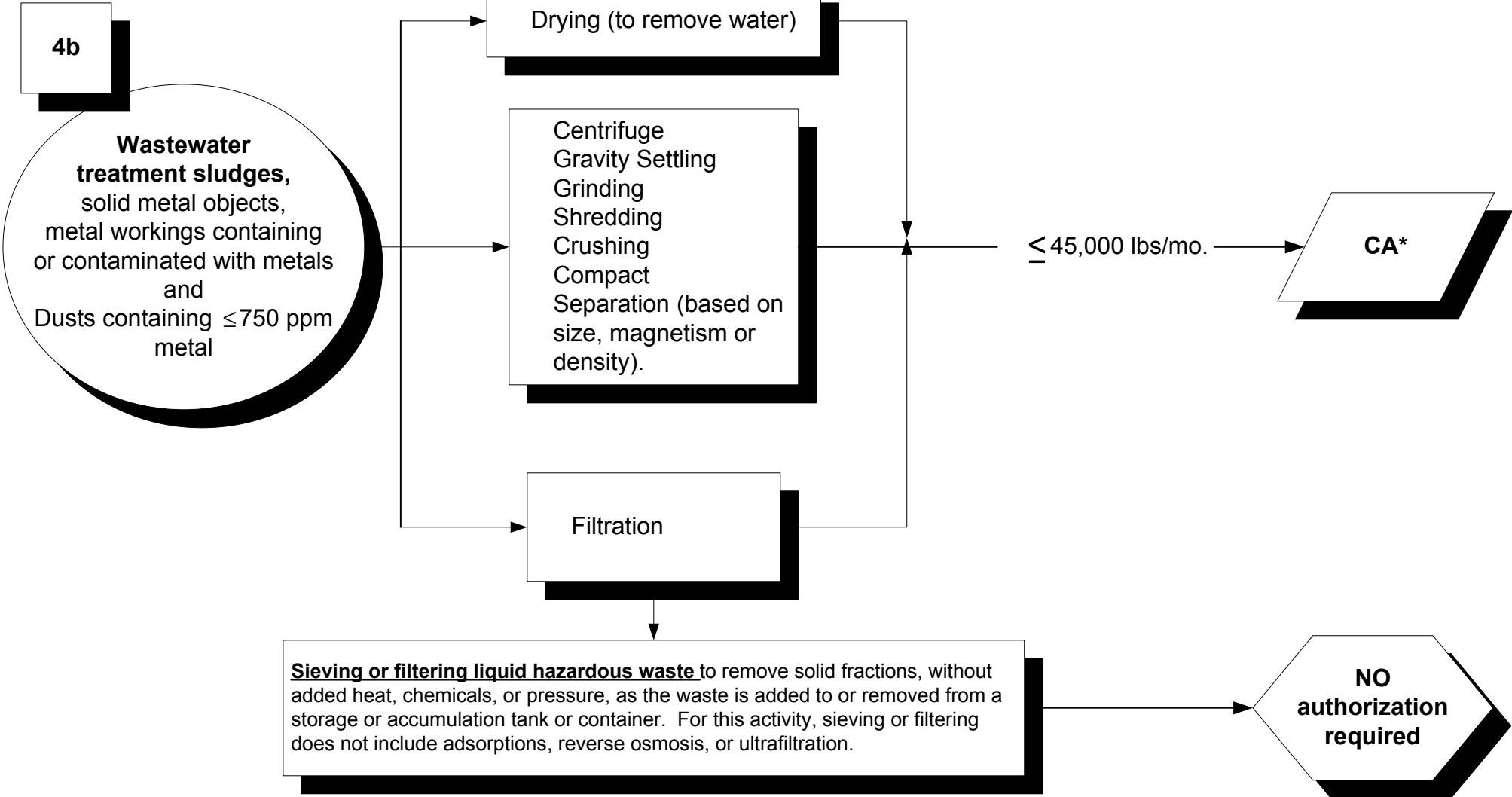


*Must be hazardous solely due to this characteristic
 **Closed except adding/removing (T22, § 66265.173)

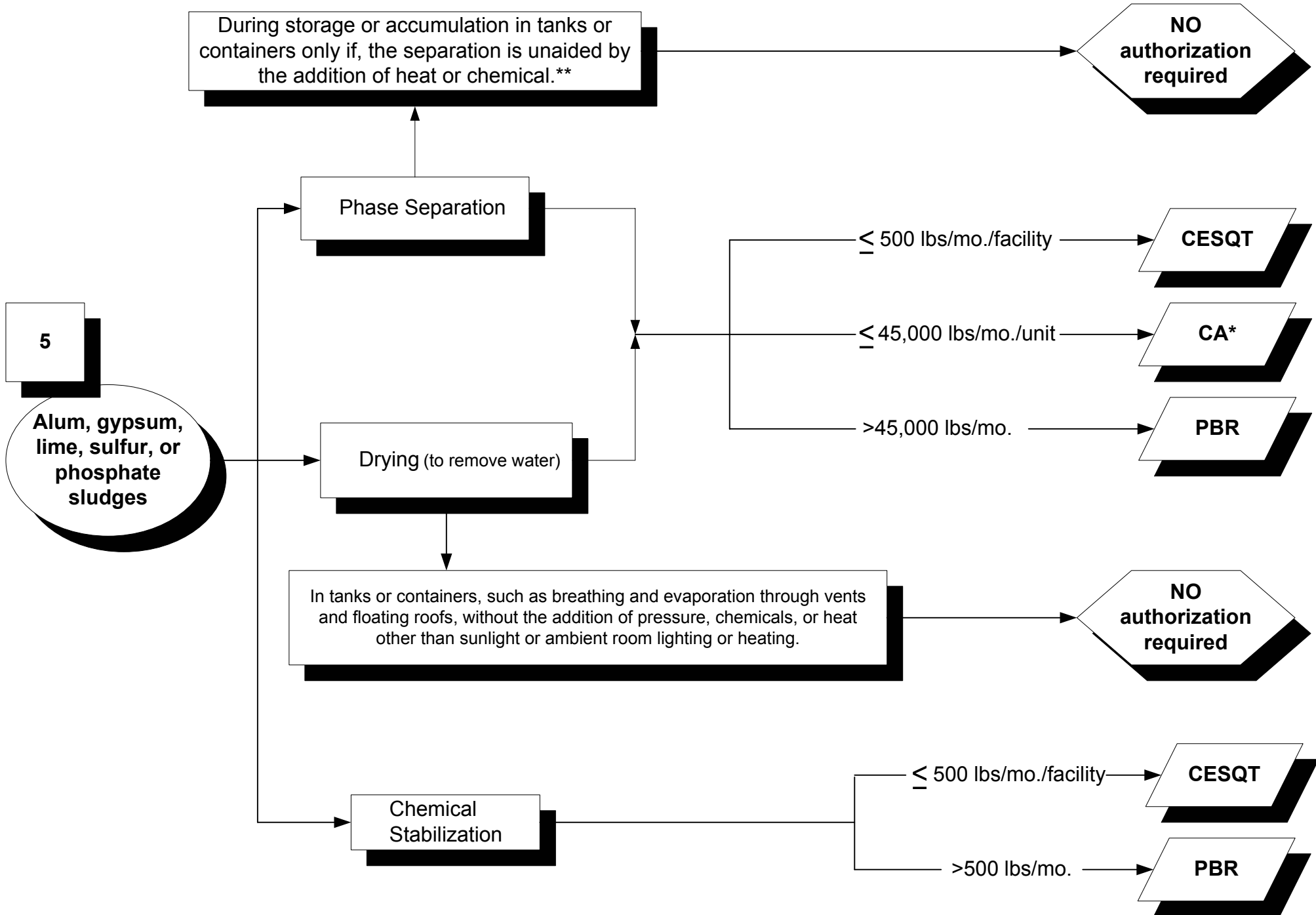


In tanks or containers, such as breathing and evaporation through vents and floating roofs, without the addition of pressure, chemicals, or heat other than sunlight or ambient room lighting or heating.

**NO
authorization
required**

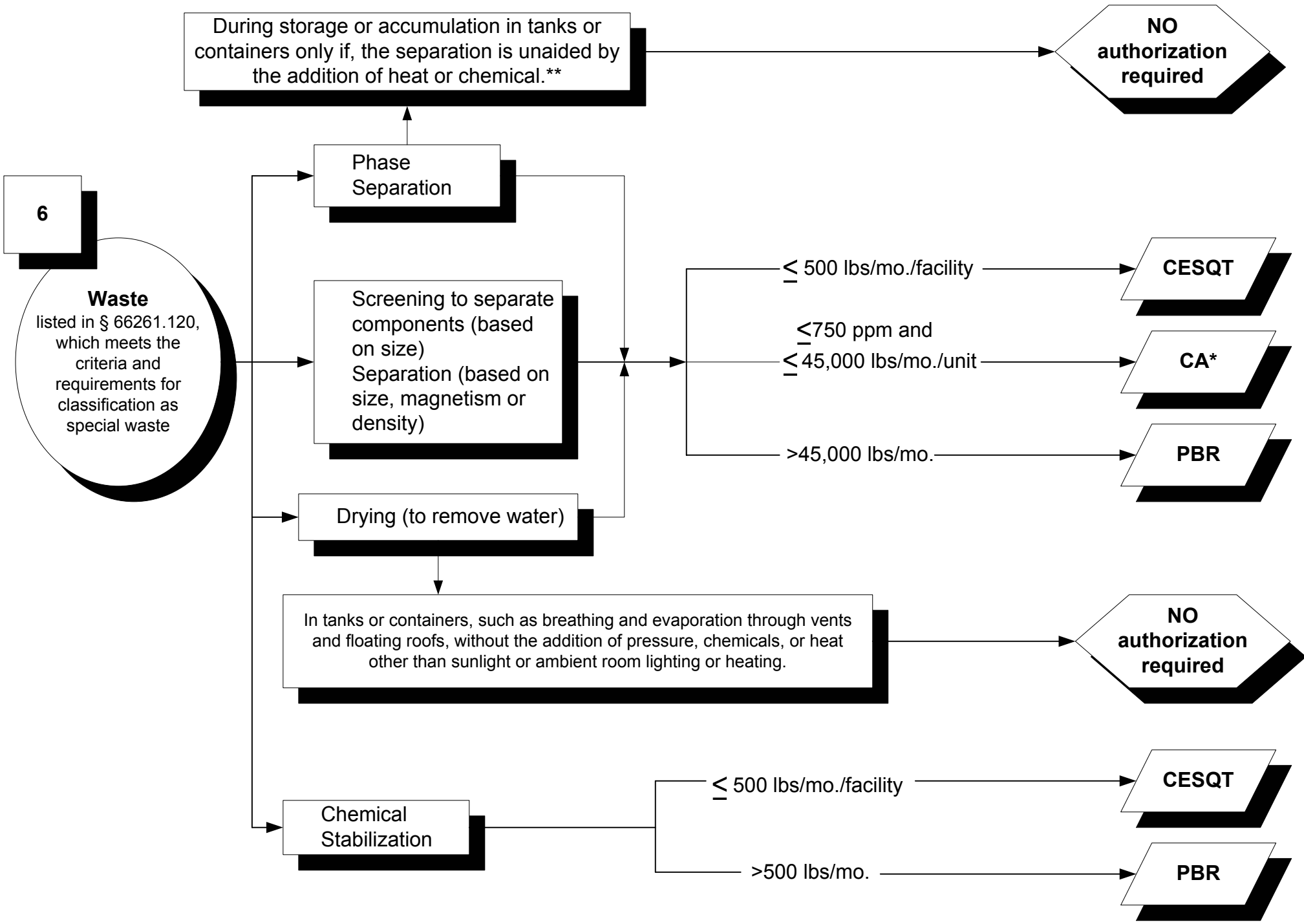


*Must be hazardous solely due to this characteristic

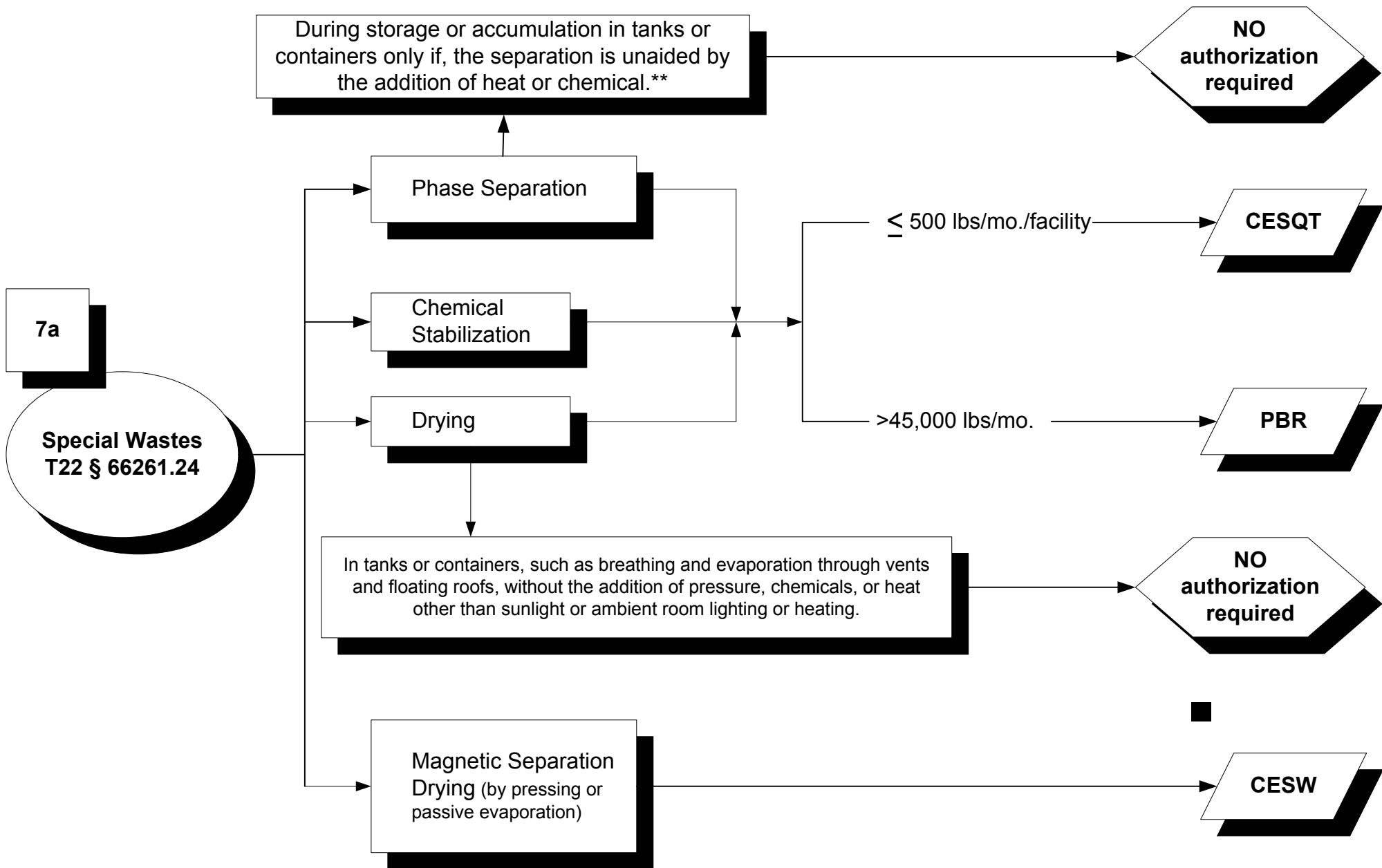


*Must be hazardous solely due to this characteristic

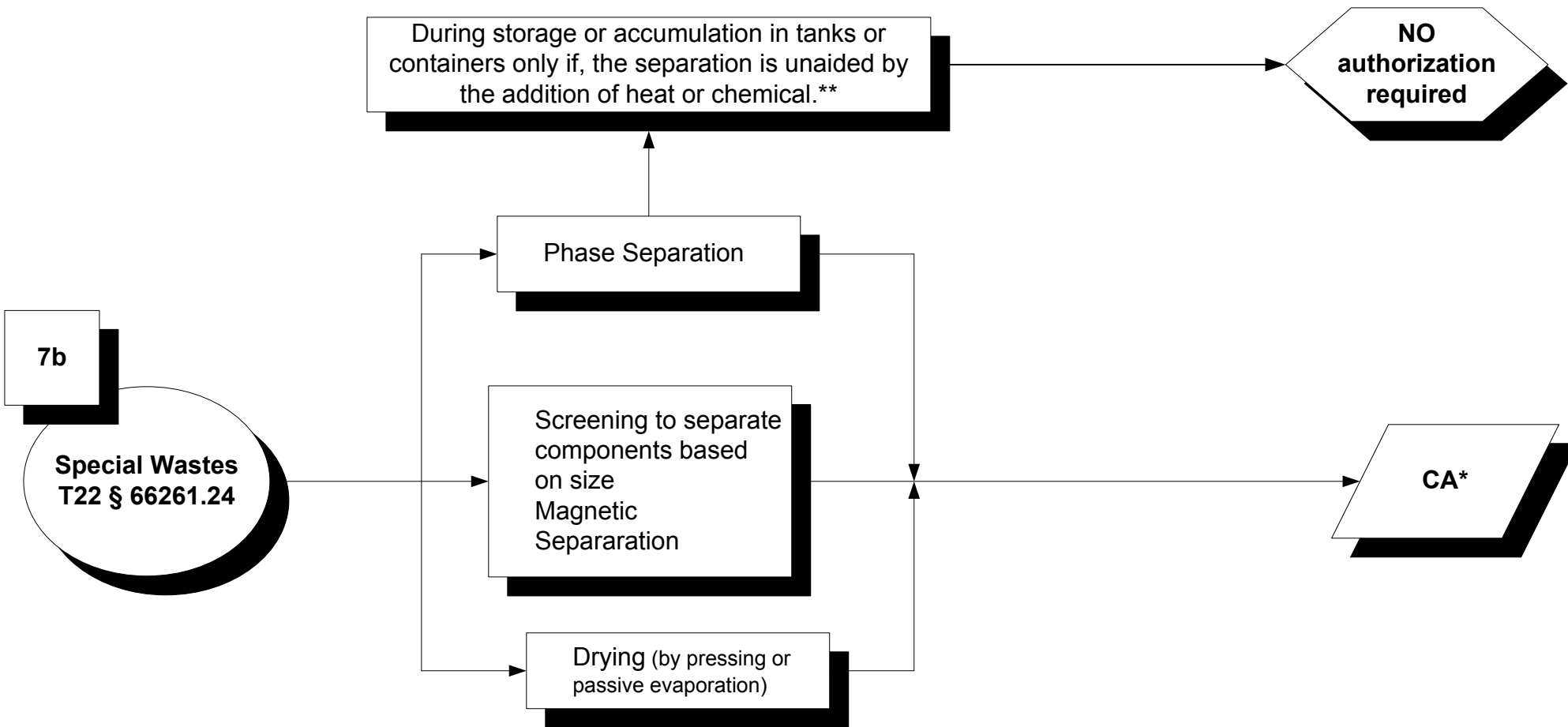
**Closed except adding/removing (T22, § 66265.173)



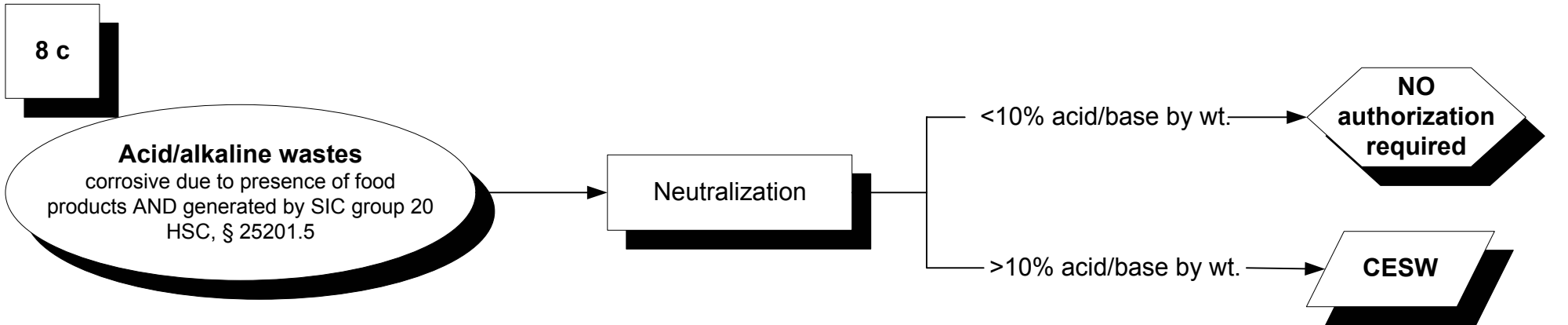
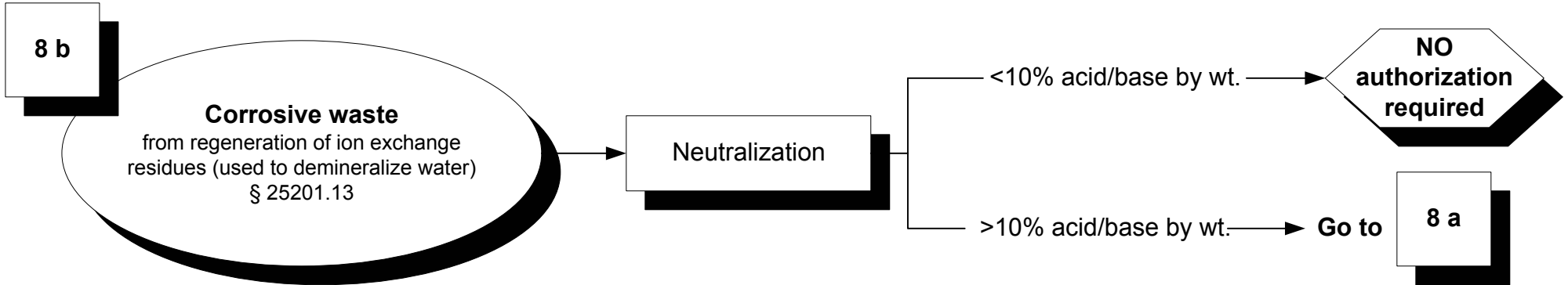
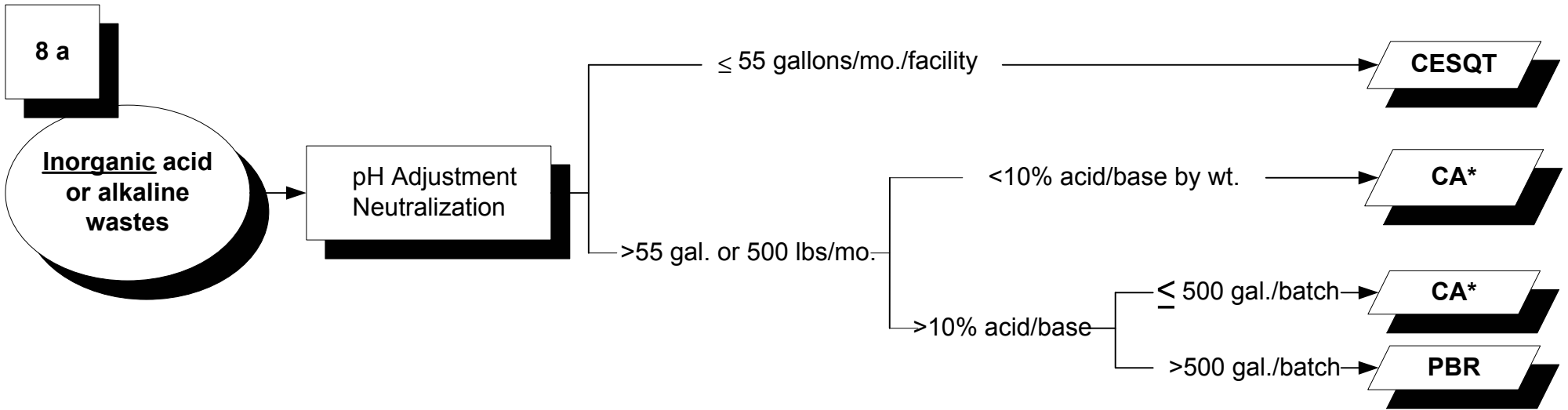
*Must be hazardous solely due to this characteristic
 **Closed except adding/removing (T22, § 66265.173)



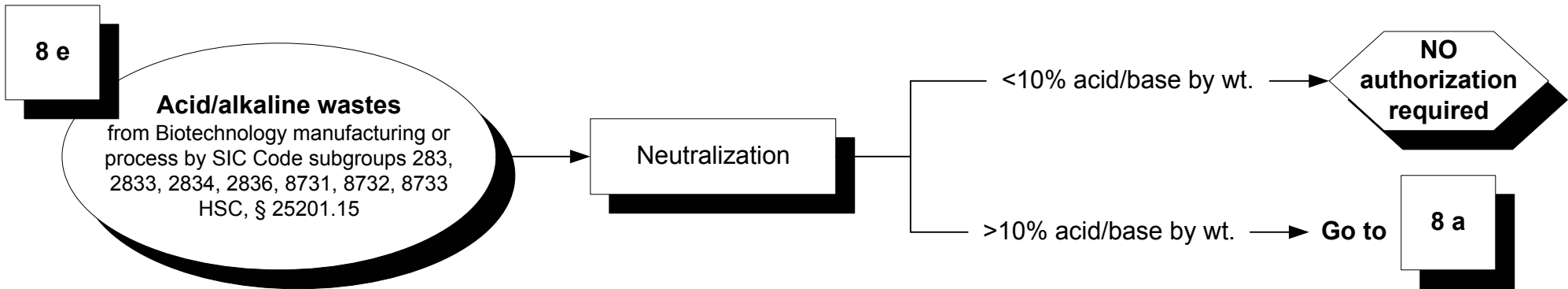
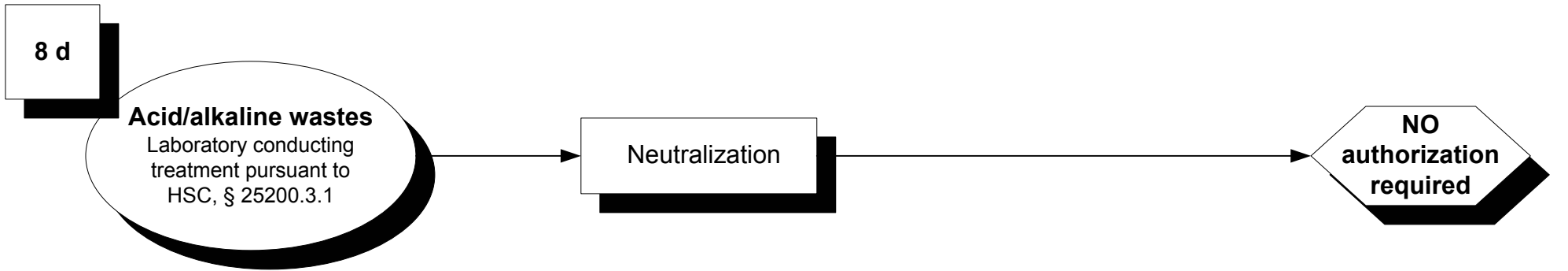
**Closed except adding/removing (T22, § 66265.173)



*Must be hazardous solely due to this characteristic
 **Closed except adding/removing (T22, § 66265.173)



*Must be hazardous solely due to this characteristic



9

Soils contaminated with metals

Screening
Magnetic
Separation

Chemical
Stabilization

≤ 500 lbs/mo./facility

CESQT

$\leq 45,000$ lbs/mo./unit

CA*

$>45,000$ lbs/mo.

PBR

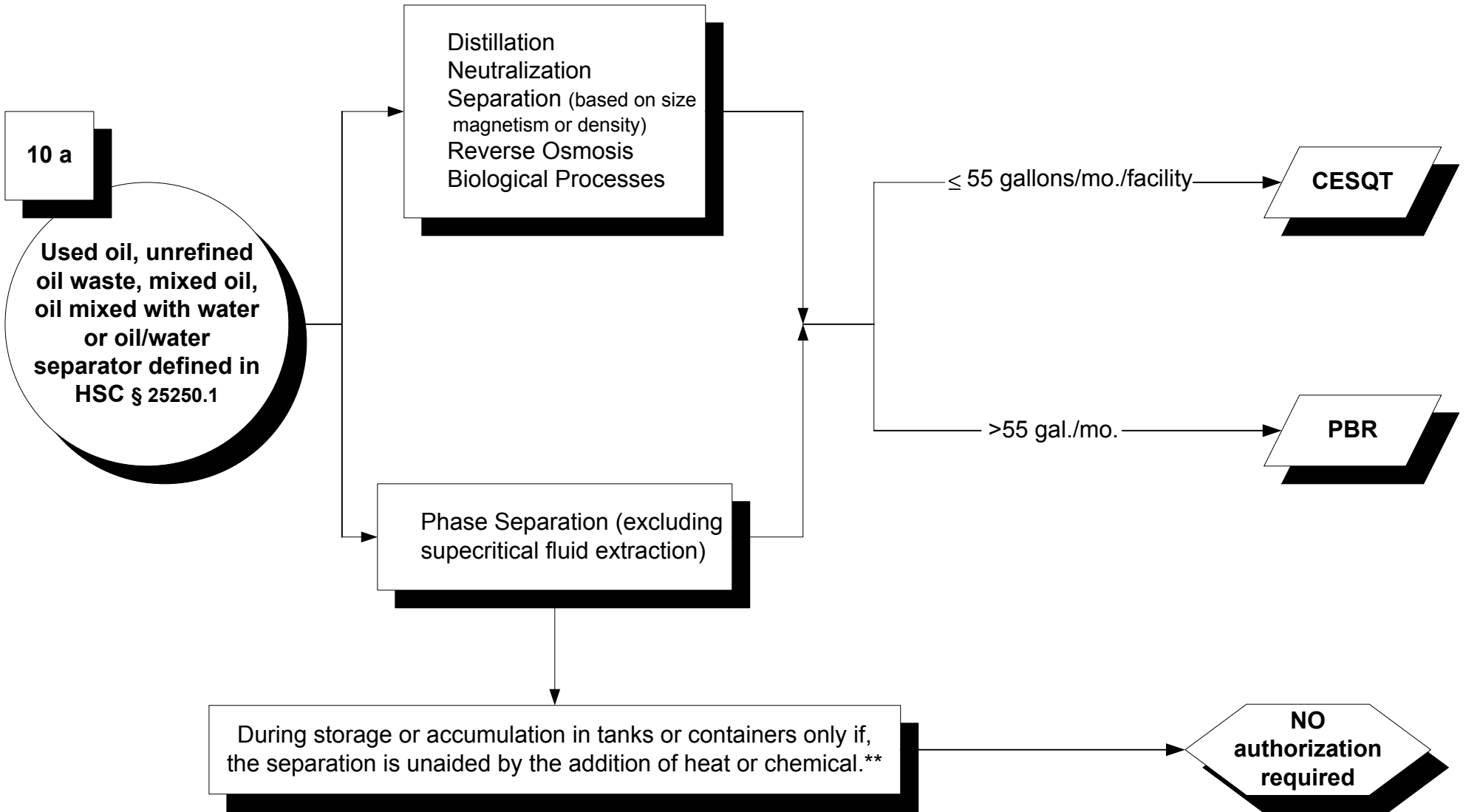
<500 lbs/mo./facility

CESQT

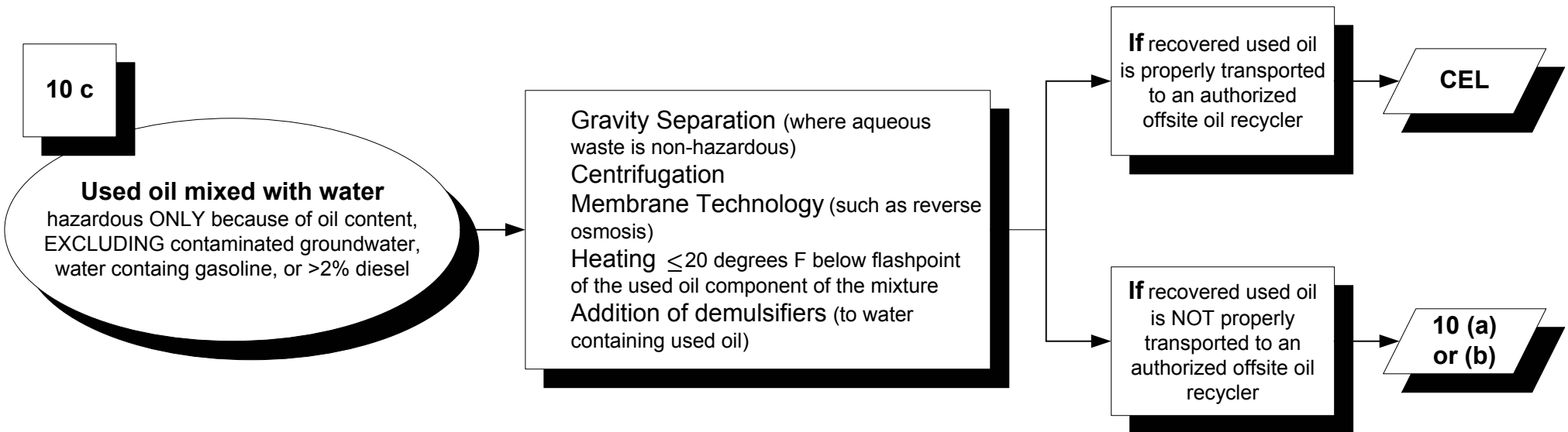
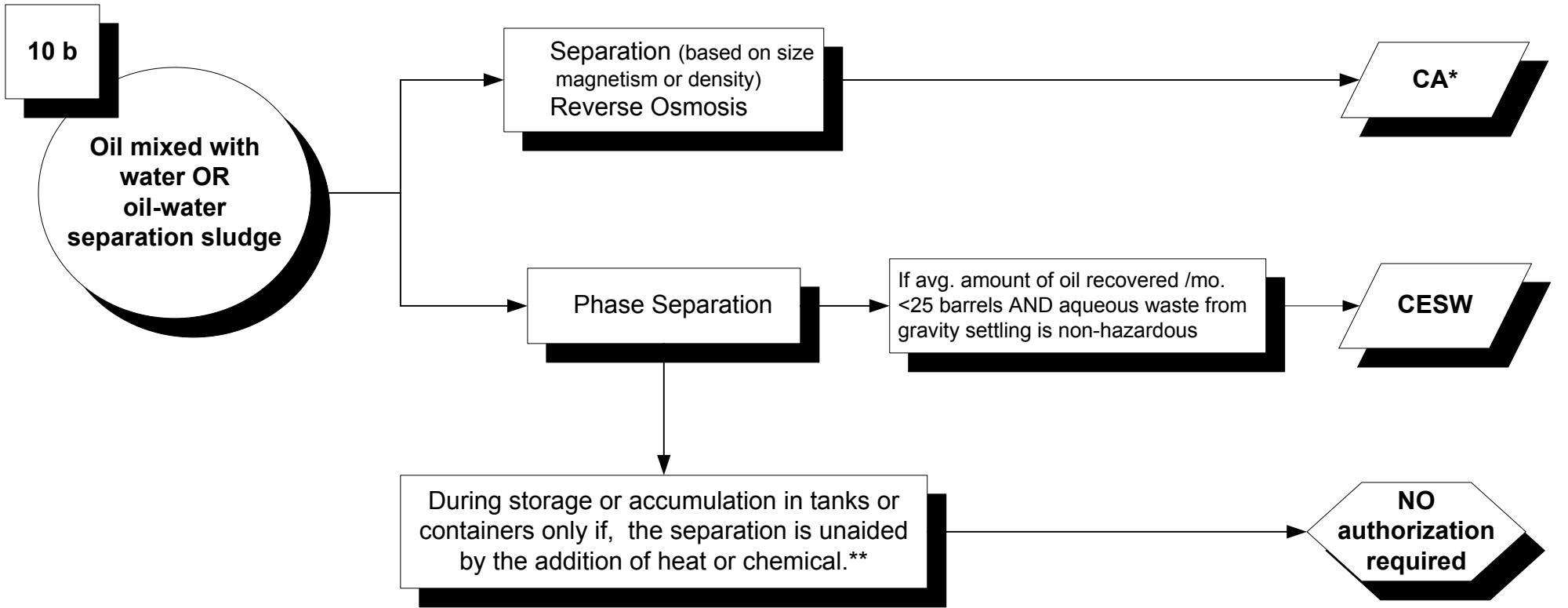
>500 lbs/mo.

PBR

*Must be hazardous solely due to this characteristic

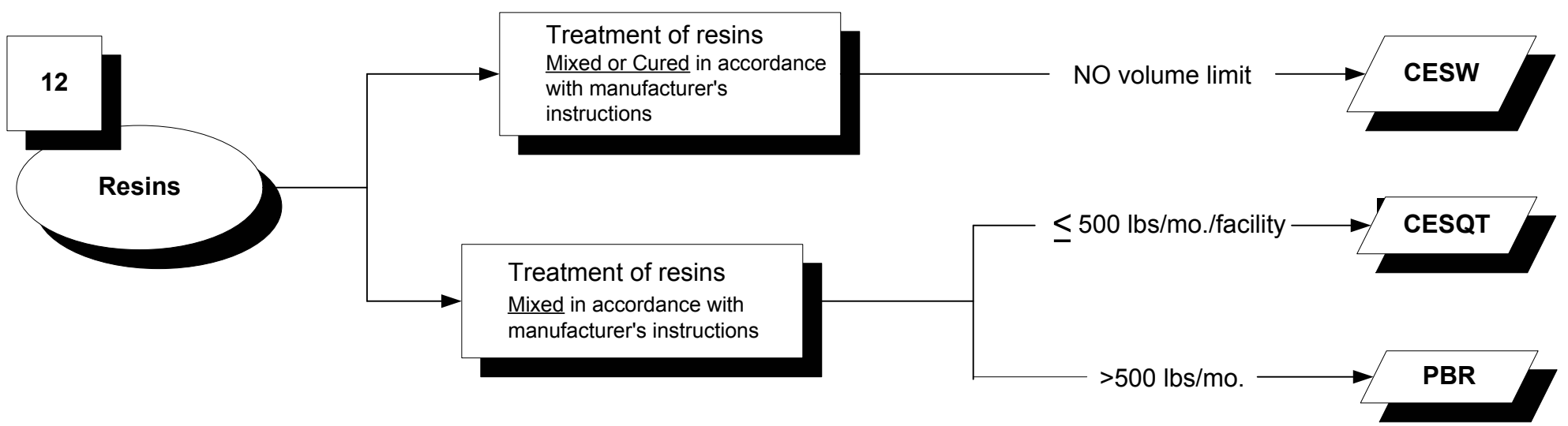
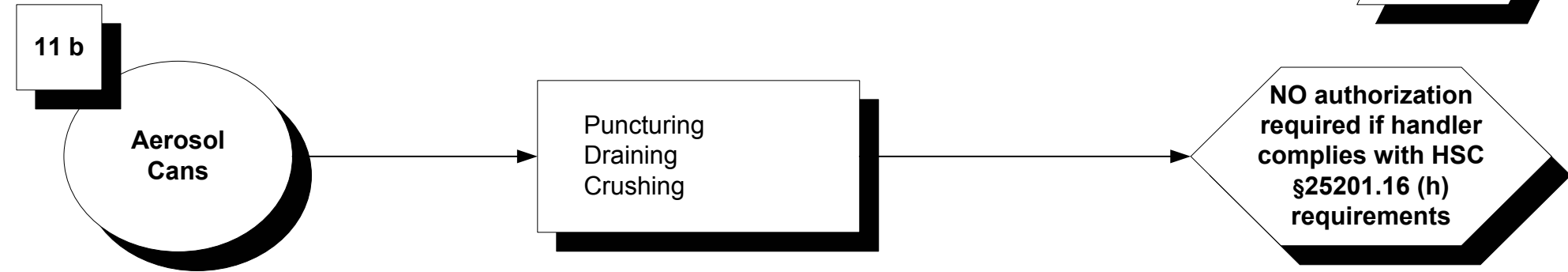
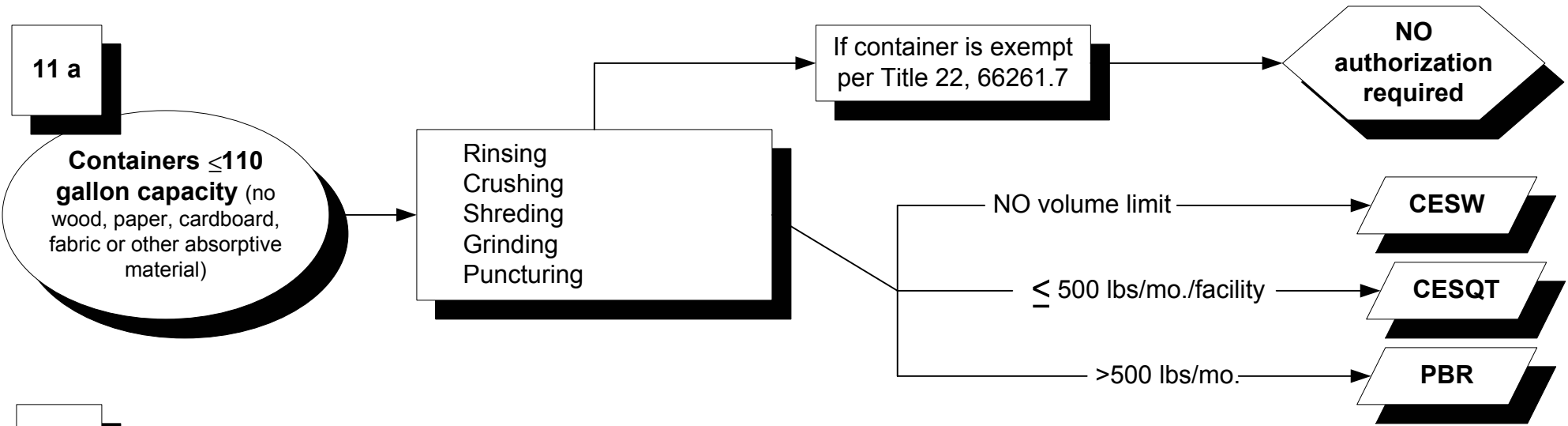


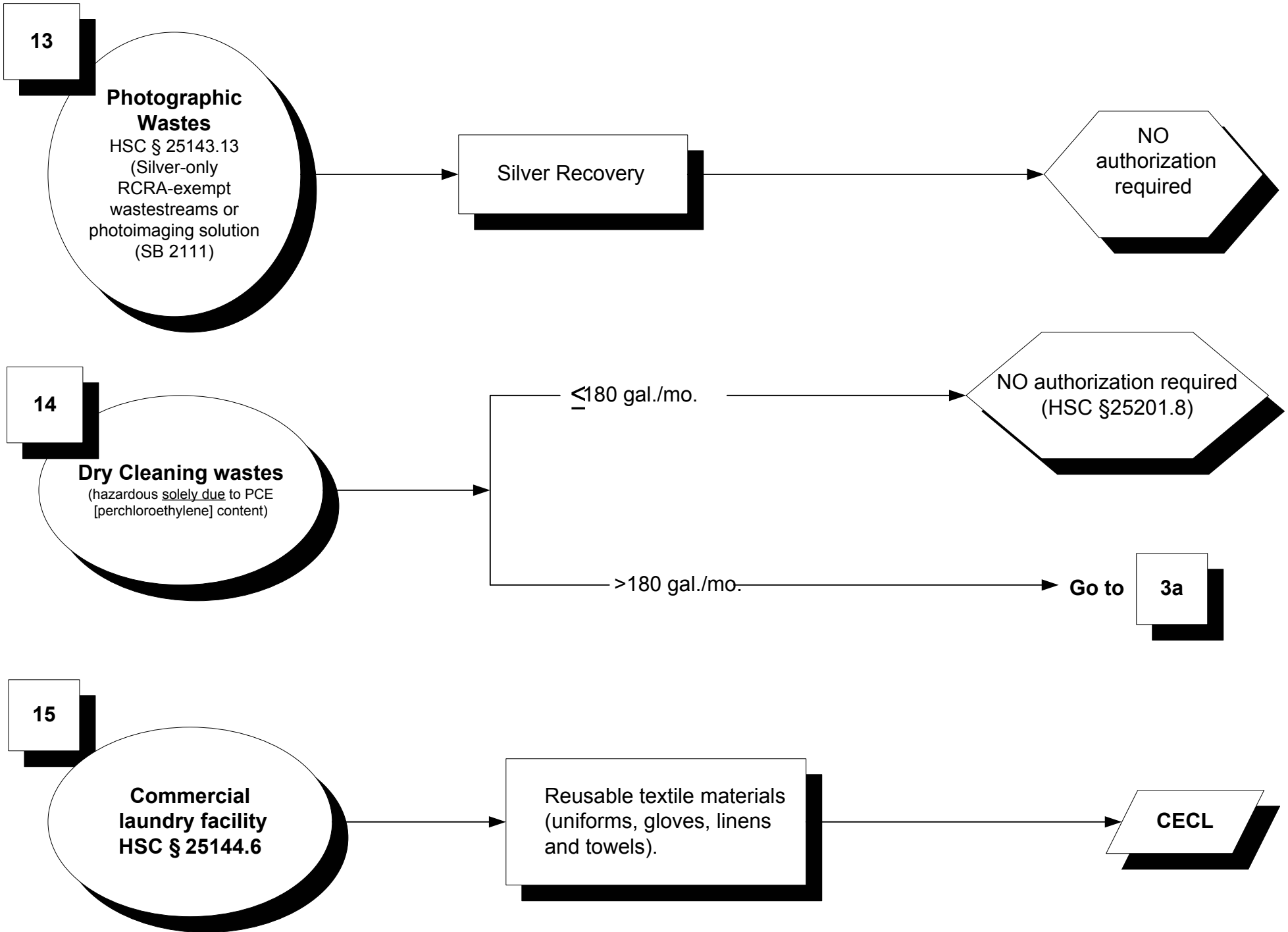
**Closed except adding/removing (T22, § 66265.173)



*Must be hazardous solely due to this characteristic

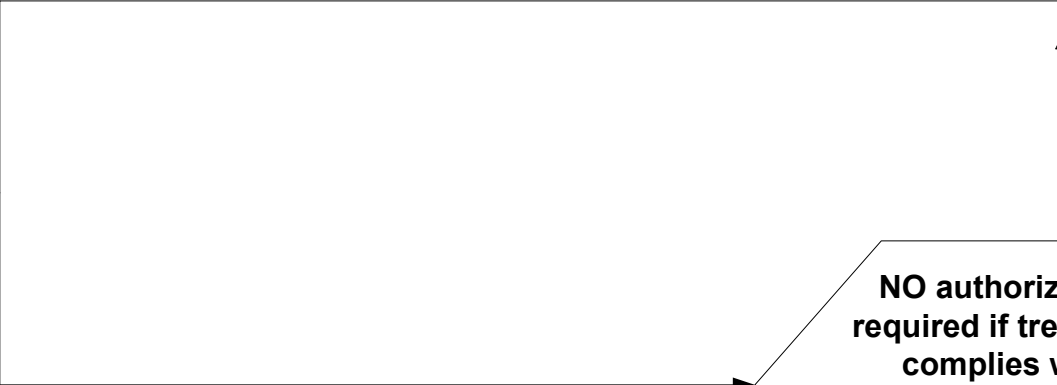
**Closed except adding/removing (T22, § 66265.173)





16a

Laboratory Waste
HSC § 25200.3.1



CESW

NO authorization required if treatment complies with HSC § 25200.3.1 AB 966 (Stats. 1998, Ch. 506)

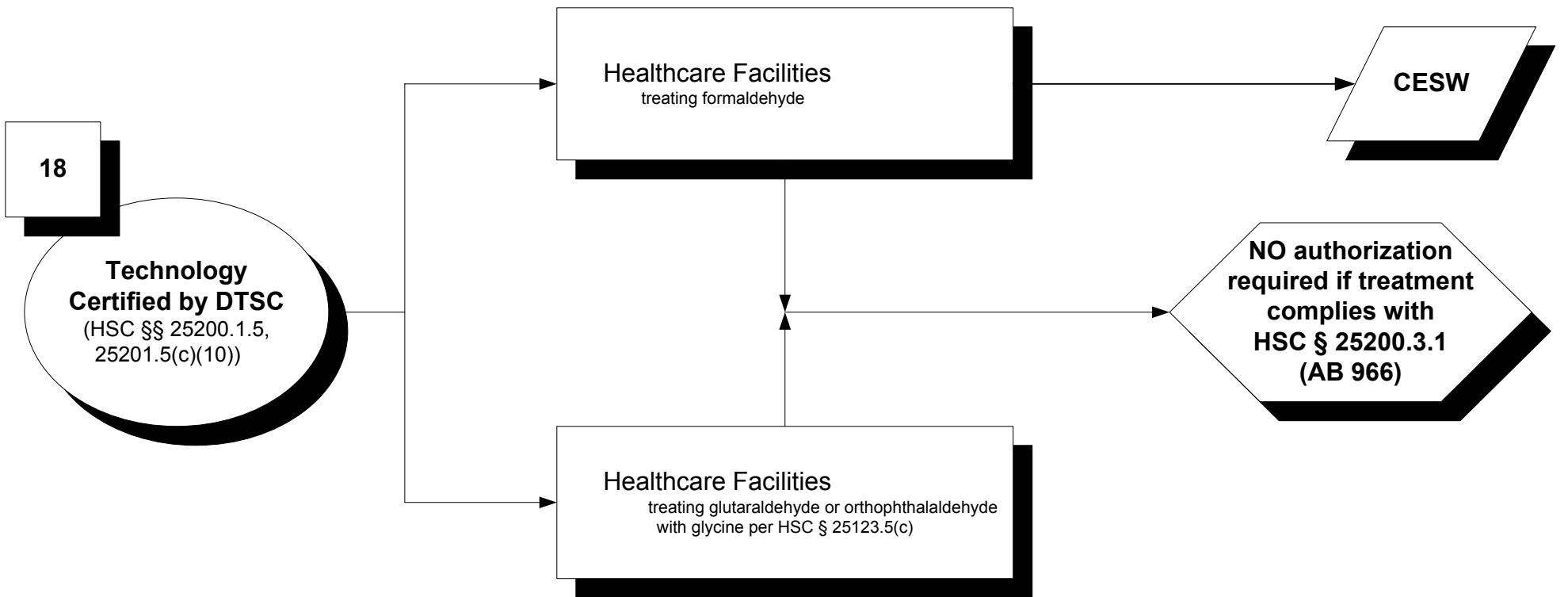
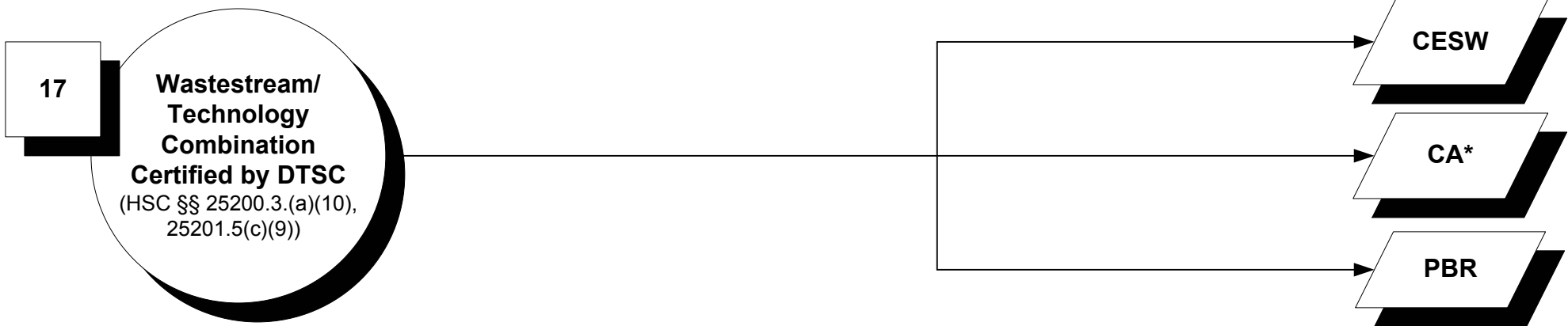
16b

Quality Control or Quality Assurance Laboratory
(HSC § 25201.5(c)(8))

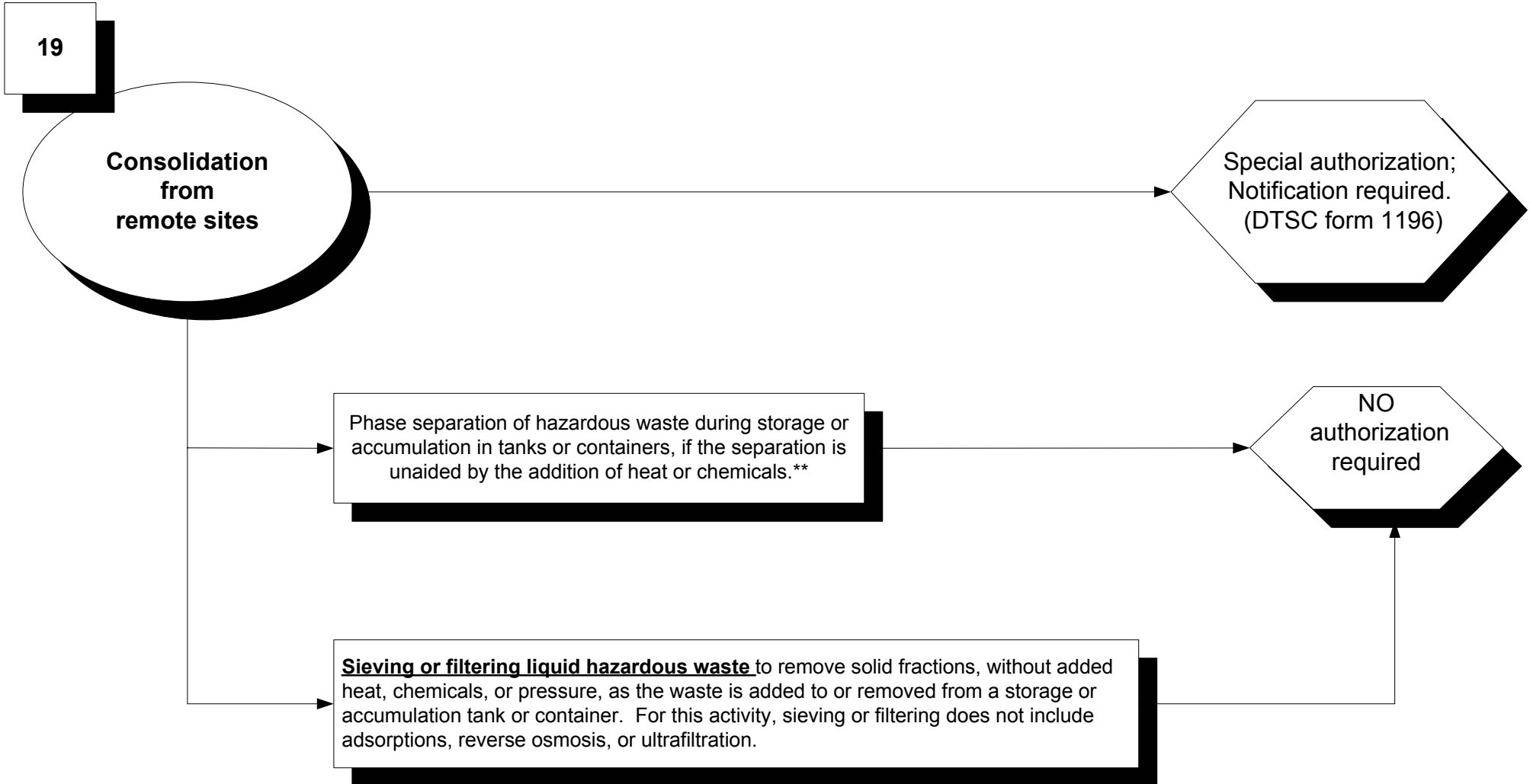


CESW

NO authorization required if treatment complies with HSC § 25200.3.1 AB 966 (Stats. 1998, Ch. 506)



*Must be hazardous solely due to this characteristic



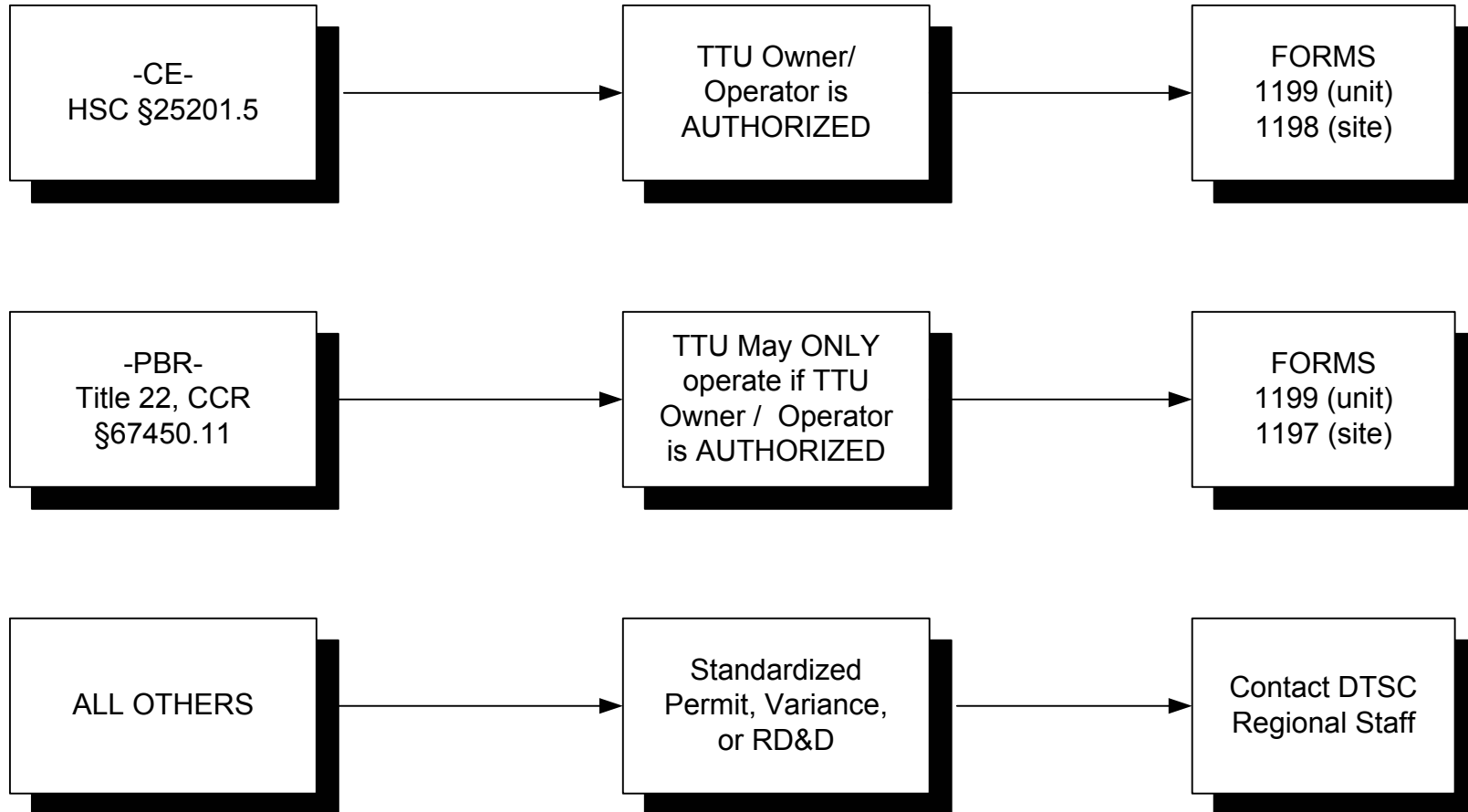
**Closed except adding/removing (T22, § 66265.173)

Transportable Treatment Units

WASTE STREAM & TREATMENT PROCESSES

AUTHORIZATION OPTIONS

NOTIFICATION FORMS



Note - SUBMIT TTU NOTIFICATIONS TO DTSC, NOT TO THE CUPA.

PBR Collection Facilities

