

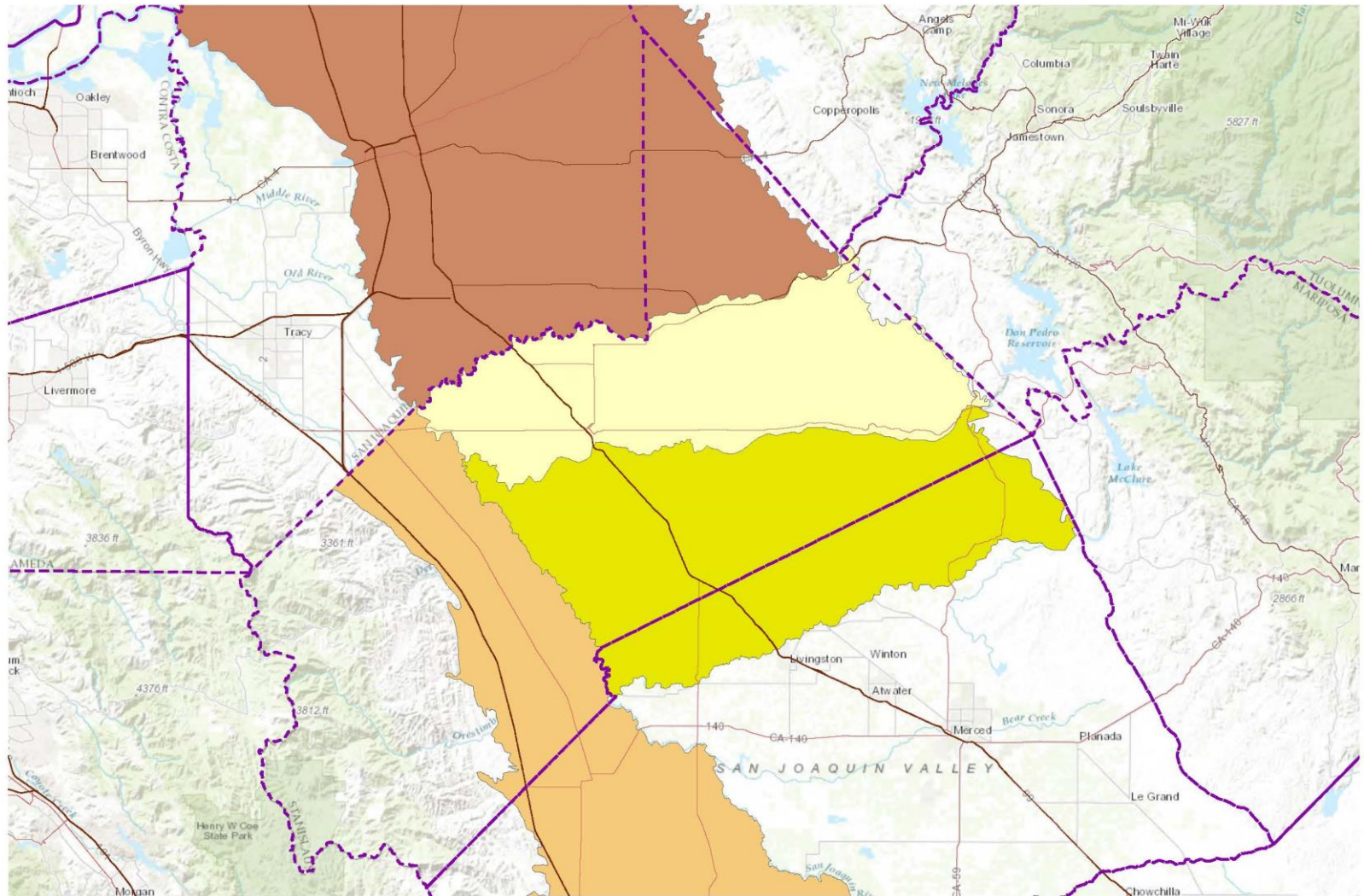
Stanislaus County Water Advisory Committee

January 31, 2018

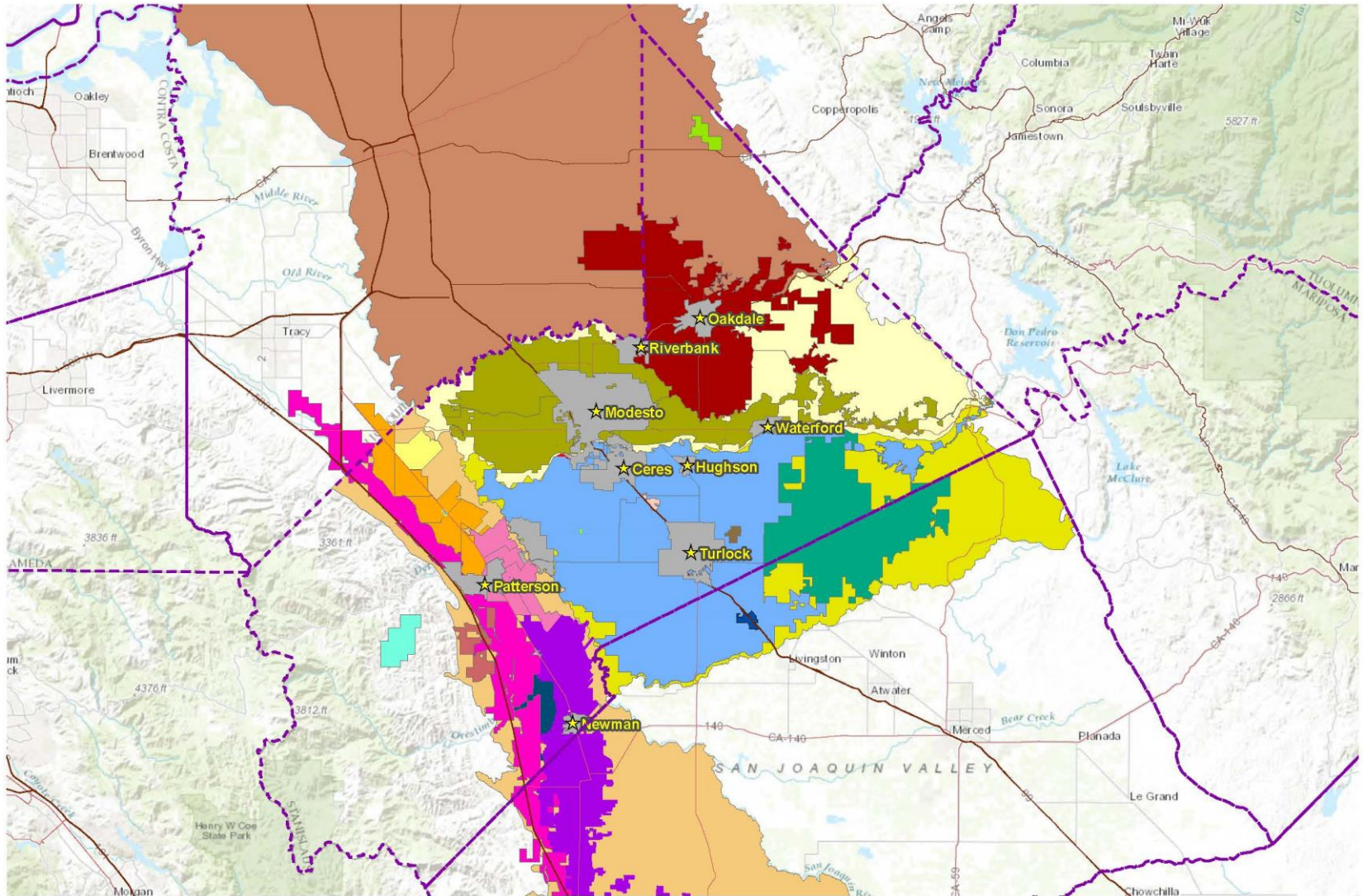
Sustainable Groundwater Management Act

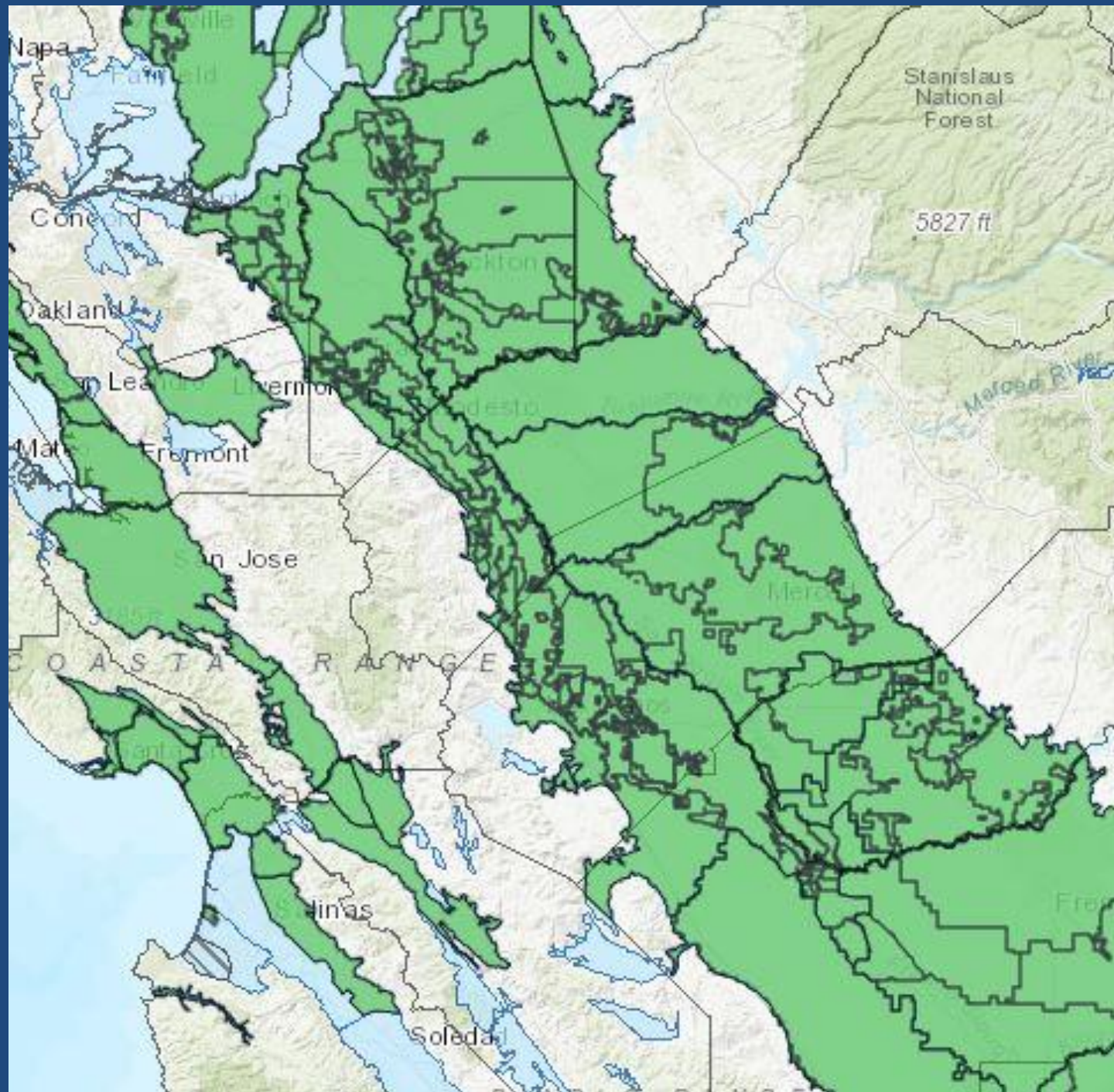
Compliance Update

Stanislaus County Groundwater Basins



Stanislaus County Water Agencies

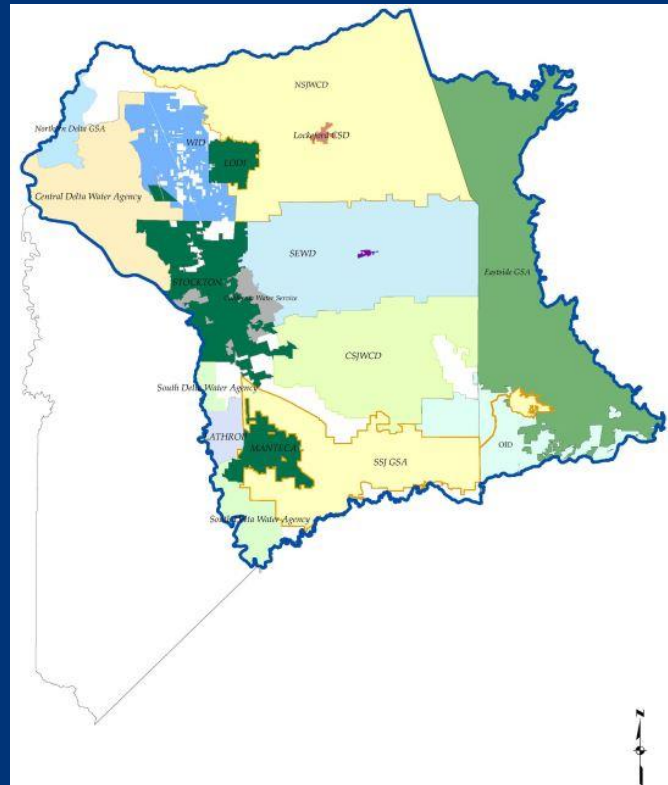




Layers Downloads Clear all

- Exclusive GSAs 4 ▼ ▶ ☰
- GSA Notice Submitted
- GSA Service Area 4 ▼ ▶ ☰
- Alternatives Submitted
- Exclusive Local Agencies (Water_Code_510723)
- Adjudicated Areas 4 ▼ ▶ ☰
- [Symbol]
- Counties 4 ▼ ▶ ☰
- [Symbol]
- Bulletin 118 Groundwater Basins (2016) 4 ▼ ▶ ☰
- Bulletin 118 Groundwater Basins
- CASGEM Basin Priorities High/Medium Only

Eastern San Joaquin Groundwater Basin



Eastern San Joaquin Subbasin GSAs

City of Lathrop

City of Lodi

City of Manteca

City of Stockton

Linden CWD

Stockton East WD

Central Delta Water Agency

South Delta Water Agency

Central San Joaquin Water Conservation District

North San Joaquin Water Conservation District

Eastside San Joaquin GSA

Oakdale ID

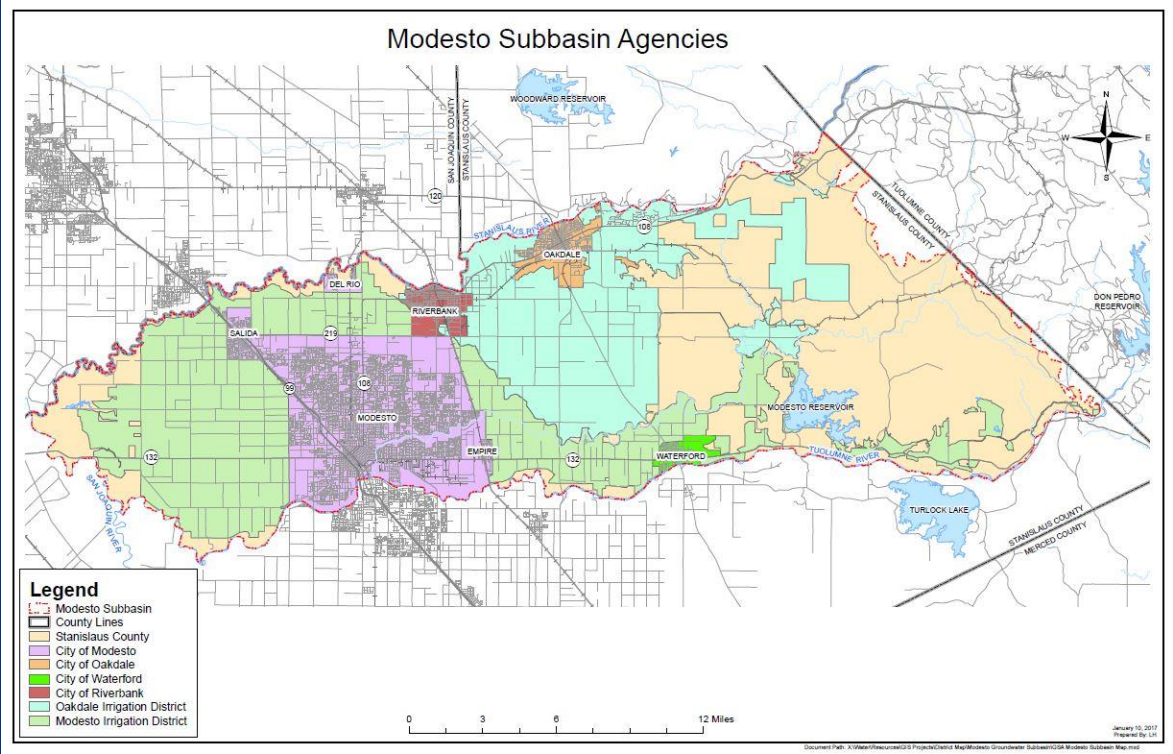
South San Joaquin ID

Woodbridge ID

Central Delta WD

Linden CWD

Modesto Groundwater Basin



Stanislaus & Tuolumne Rivers Groundwater Basin Association GSA

City of Modesto

City of Oakdale

City of Riverbank

City of Waterford

Oakdale ID

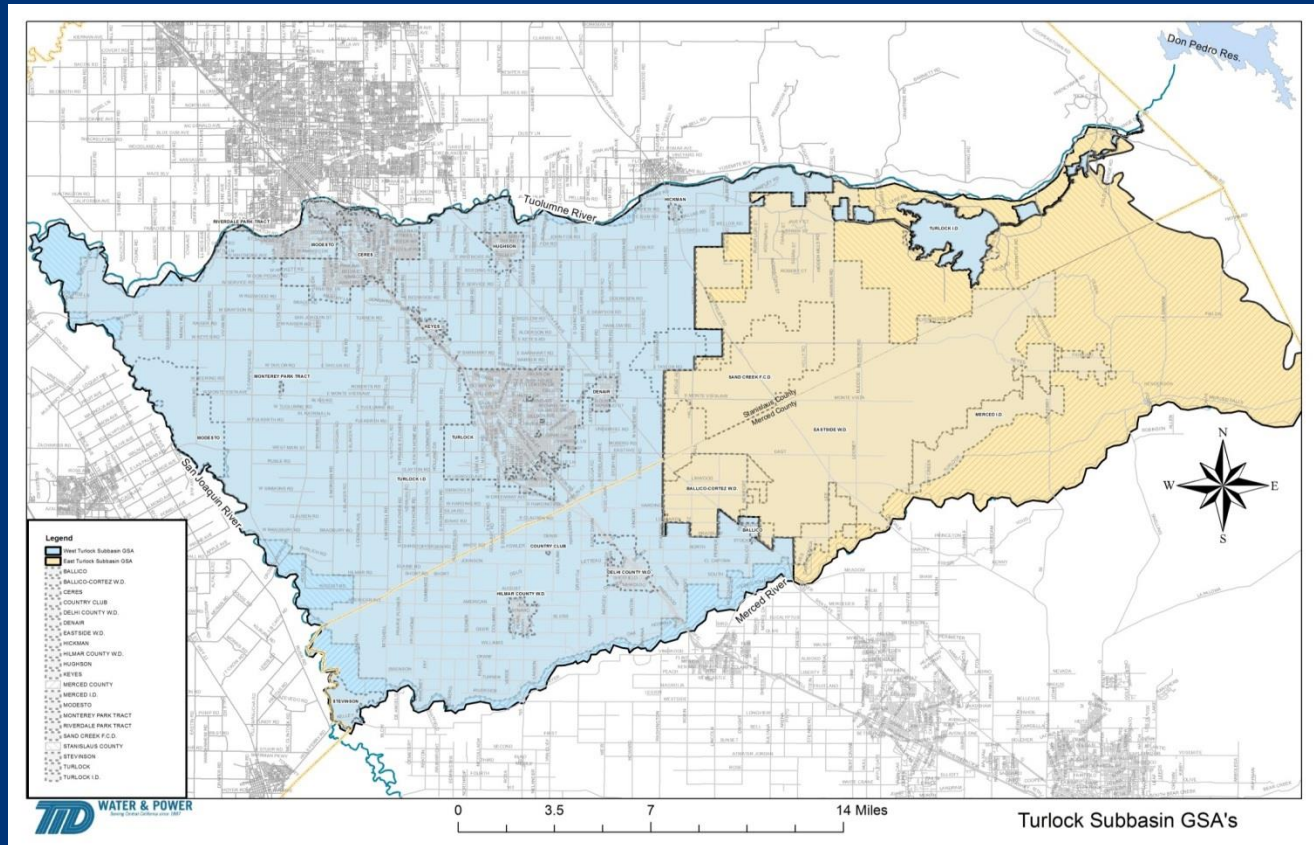
Modesto ID

Stanislaus County

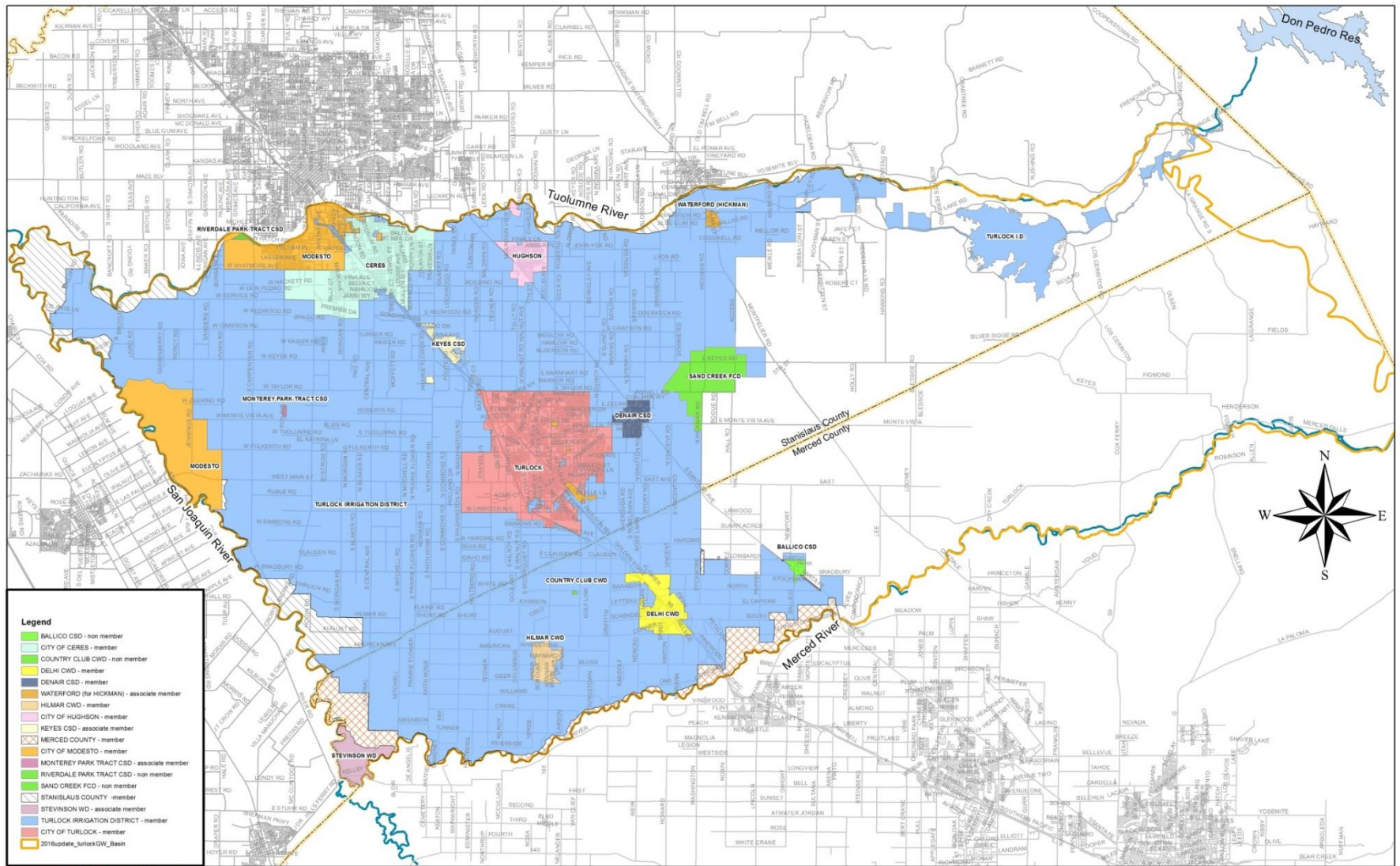
*Tuolumne County**

*Formed separate GSA

Turlock Groundwater Basin



West Turlock Subbasin GSA



West Turlock Subbasin Agencies



Exhibit B

West Turlock Subbasin GSA

City of Ceres

City of Hughson

City of Modesto

City of Turlock

Denair CSD

Turlock Irrigation District

Merced County

Stanislaus County

Delhi County Water District

Hilmar County Water District

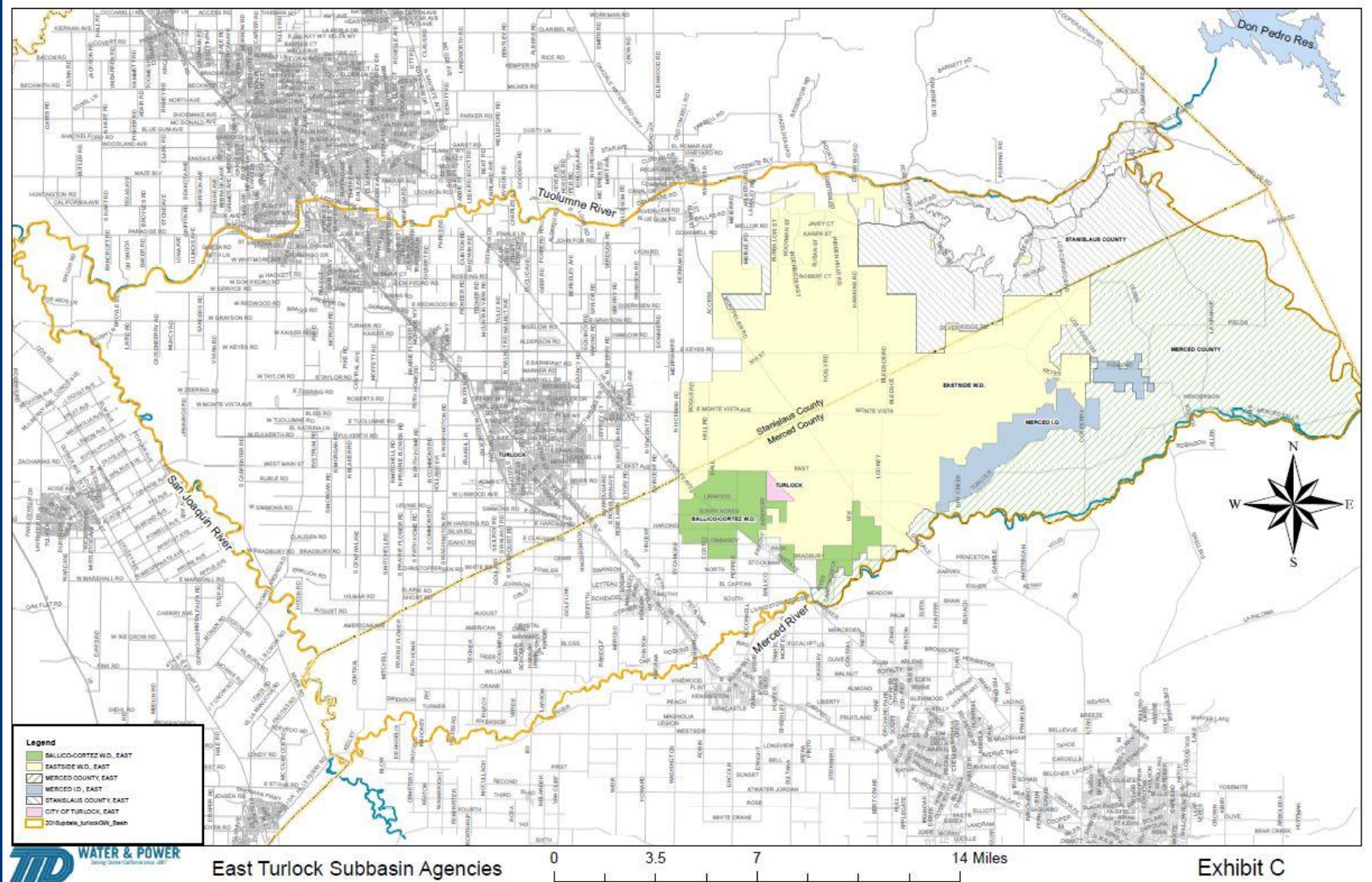
Associate Members:

Keyes CSD

Stevinson WD

City of Waterford

East Turlock Subbasin GSA



East Turlock Subbasin Agencies

0 3.5 7 14 Miles

Exhibit C

East Turlock Subbasin GSA

Eastside WD

Ballico-Cortez WD

Merced Irrigation District

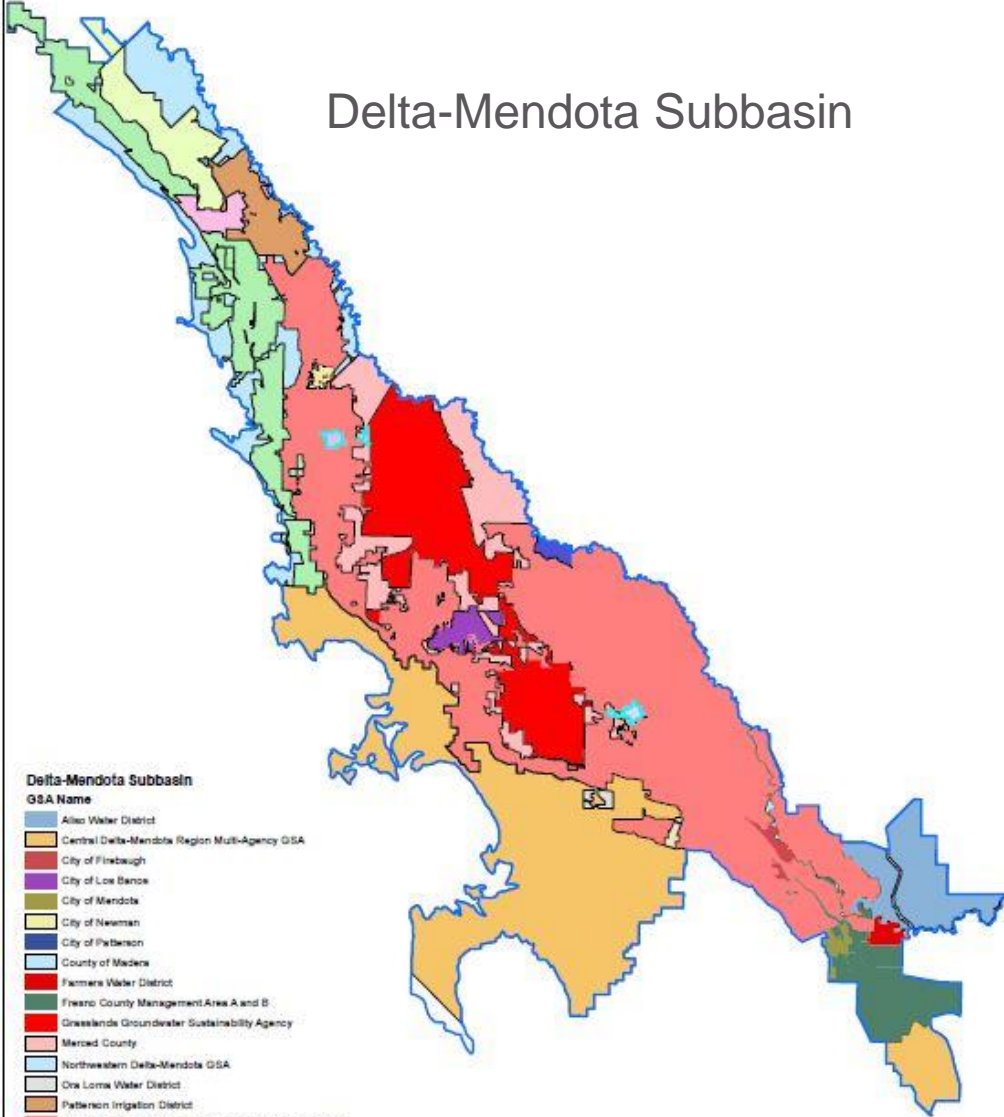
Merced County

Stanislaus County

City of Turlock *

* Associate Member

Delta-Mendota Subbasin

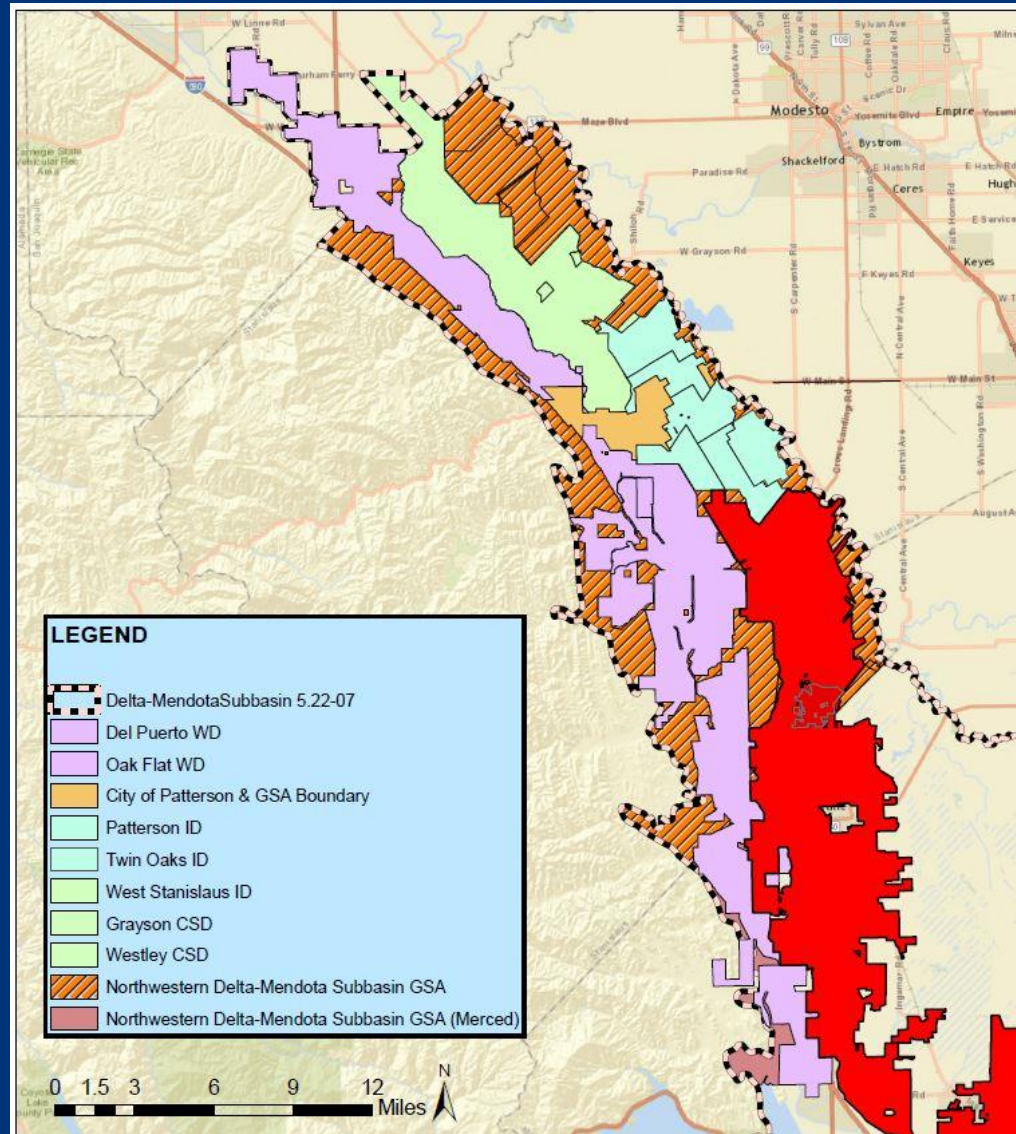


Delta-Mendota Subbasin

GSA Name

- Aliso Water District
- Central Delta-Mendota Region Multi-Agency GSA
- City of Firebaugh
- City of Los Banos
- City of Mendota
- City of Newman
- City of Patterson
- County of Madras
- Farmers Water District
- Fresno County Management Area A and B
- Grasslands Groundwater Sustainability Agency
- Merced County
- Northwestern Delta-Mendota GSA
- Oak Loma Water District
- Patterson Irrigation District
- San Joaquin River Exchange Contractors Water Authority
- Turner Island Water District
- West Stanislaus Irrigation District 1 and 2
- Widoin Water District GSA
- DMII GSA
- City of Dos Palos
- City of Gustine
- City of Patterson

Delta-Mendota Subbasin –Northern Group



Delta-Mendota Groundwater Basin – Northern Group GSAs

City of Patterson

Del Puerto WD

West Stanislaus ID

Patterson ID

Northwestern Delta-Mendota GSA

Groundwater Sustainability Plans

50 Year Planning Horizon

- Land Use & Water Demand Nexus

Basins in Critical Condition of Overdraft

- January 31, 2020
- 20 Year Implementation Period (January 2040)

High & Medium Priority Basins

- January 31, 2022
- 20 Year Implementation Period (January 2042)



Groundwater basin/subbasin

Critically Overdrafted Groundwater Basins

DWR Region Office boundary

County boundary

0 15 30 60 Miles

Critically Overdrafted Basins

Basin Number	Basin/Subbasin Name
North Central Region	
5-22.01	Eastern San Joaquin
South Central Region	
3-01	Soquel Valley
3-02	Pajaro Valley
3-04.01	180/400 Foot Aquifer
3-04.06	Paso Robles Area
3-08	Los Osos Valley
3-13	Cuyama Valley
5-22.04	Merced
5-22.05	Chowchilla
5-22.06	Madera
5-22.07	Delta-Mendota
5-22.08	Kings
5-22.09	Westside
5-22.11	Kaweah
5-22.12	Tulare Lake
5-22.13	Tule
5-22.14	Kern County

Total number of Basins/subbasins: 17
 January 1, 2016



North Central Region Office

South Central Region Office

Groundwater Sustainability Plans – Grant Funding

Basins in Critical Condition of Overdraft (\$1.5 M cap)

High & Medium Priority Basins (\$1 M cap)

Require up to 50% Local Cost Share

- Cost offsets may include Disadvantaged Communities
- Local relevant SGMA activities (since January 1, 2015)

78 applications (Category 1 & 2)

\$86.4 M requested out of \$86.3 M available (\$100,000)

Notice of Award in February

Questions & Discussion