



Stanislaus County Water
Advisory Committee

Del Puerto Canyon

RESERVOIR

Chris White, Central California Irrigation District

Federal Facilities

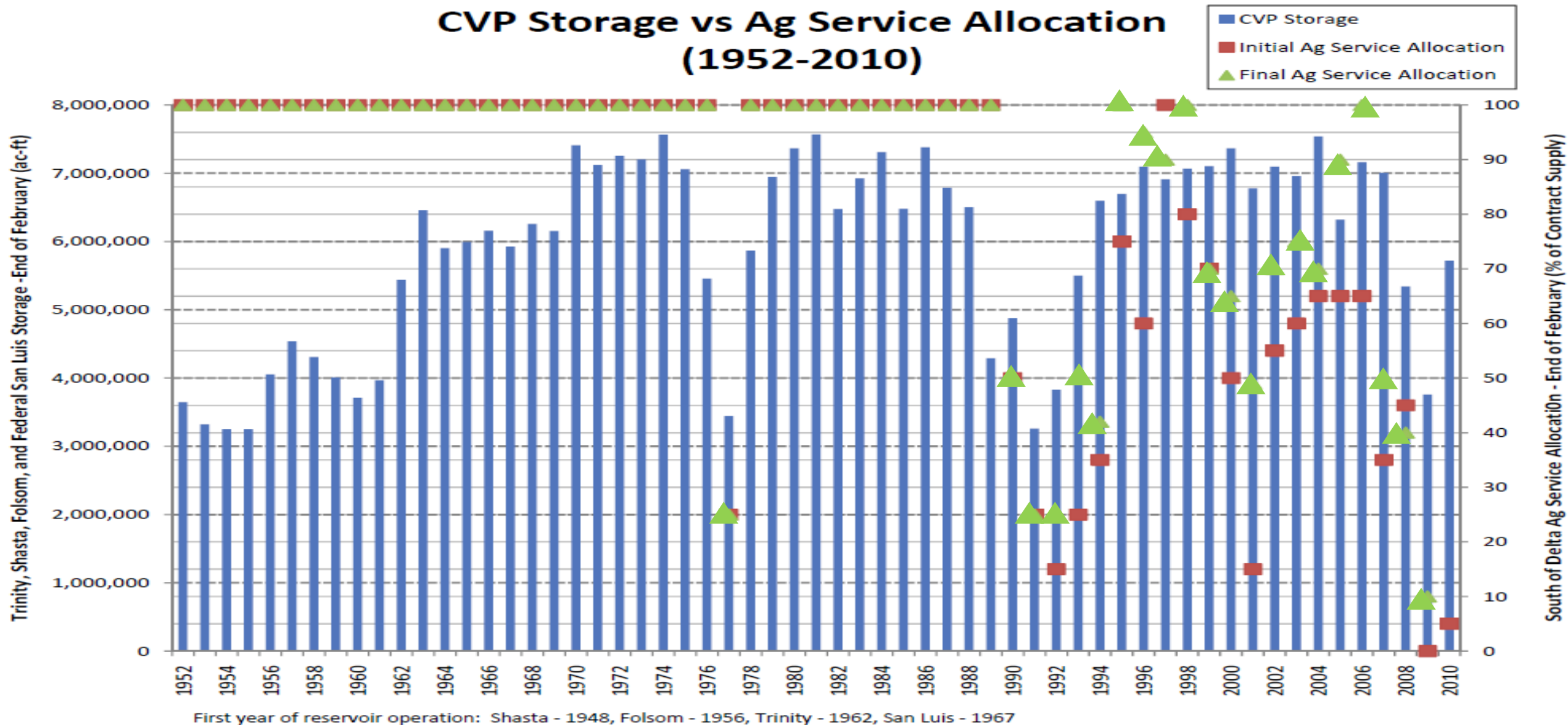
State Facilities

1960s



The Decline of Supply Reliability

CVP Storage vs Ag Service Allocation (1952-2010)



Why Del Puerto Canyon Reservoir?

Provide Locally-Owned and
Controlled South of Delta
Water Storage



Del Puerto Canyon Reservoir



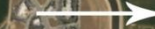
Reservoir Inundation Area

California Aqueduct

Delta-Mendota Canal

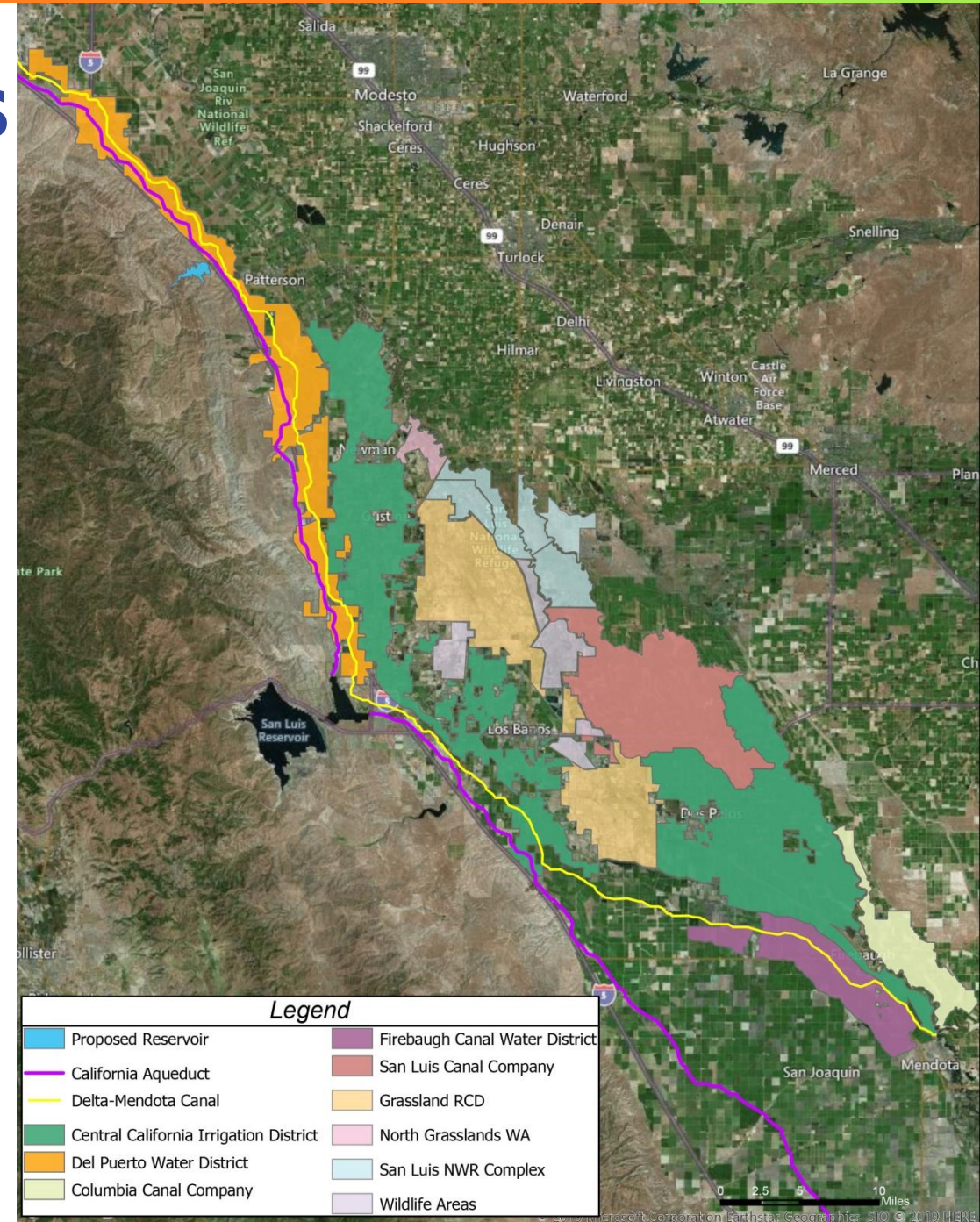


City of
Patterson



Benefits to Stanislaus & Adjacent Counties

- Water Supply
 - Agriculture
 - Groundwater Management
- Environmental
 - Wildlife Refuges
 - Del Puerto Creek Downstream of I-5
- Recreation
- Regional Economy



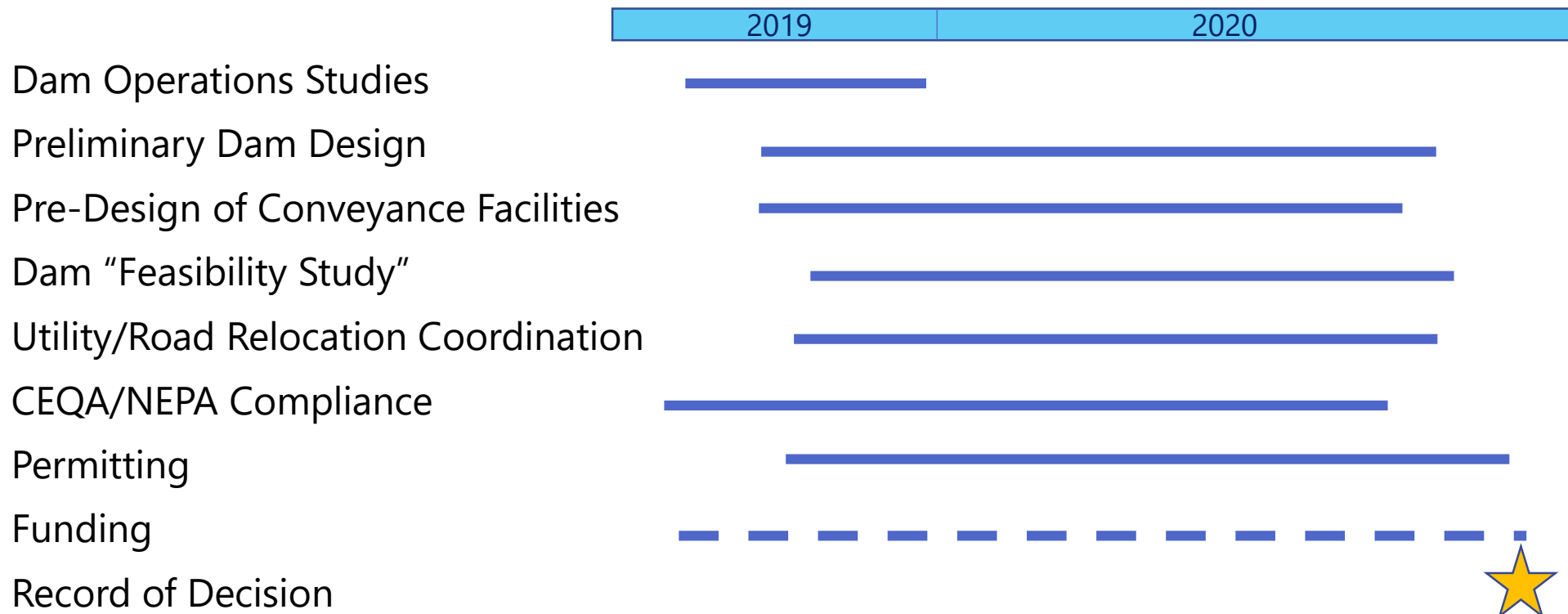
Del Puerto Canyon Reservoir

- Up to 85,000 AFY storage
- 55,000 to 60,000 AFY yield
- Approximately 300 CFS of Put/Take capacity
- 200 foot high earth fill dam
- Connection to Delta-Mendota Canal



Our Biggest Challenge - Schedule

- WINN funding opportunity dictates completion of EIS and issuance of Record of Decision before end of 2020



Other Challenges

- Relocation of Major Utilities
 - Power transmission
 - Gas & petroleum transmission
 - Communications
- Relocation of Del Puerto Canyon Road
- Coordination with Multiple Agencies
 - Local
 - County
 - State
 - Federal



Questions?

