

Stanislaus County
Water Advisory Committee

SGMA Update

March 29, 2017

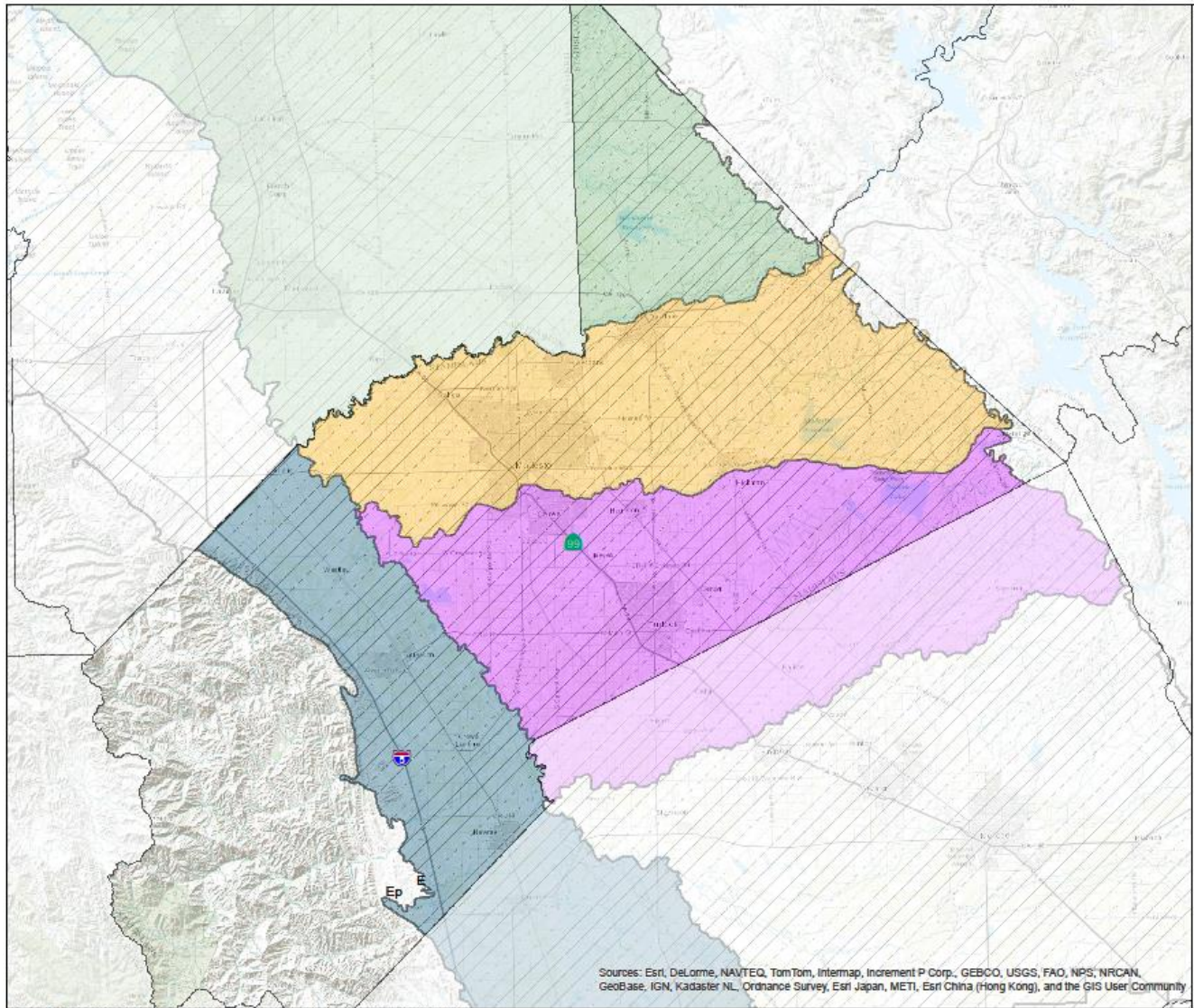
Sustainable Groundwater Management Act (SGMA)

- Effective January 2015
- Provides a framework for sustainable management of groundwater supplies by local agencies

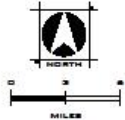
SGMA Implementation

- Formation of Groundwater Sustainability Agencies (GSA) by June 30, 2017
- GSA coverage must be Basin-wide
 - One or more (coordination)
 - No Gaps or Overlaps





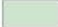
GROUNDWATER BASIN AND SUBBASIN MAP
STANISLAUS COUNTY, CALIFORNIA
APRIL 2014




Groundwater Basin

 San Joaquin Valley

Subbasin

 Eastern San Joaquin

 Modesto

 Turlock

 Delta-Mendota

County

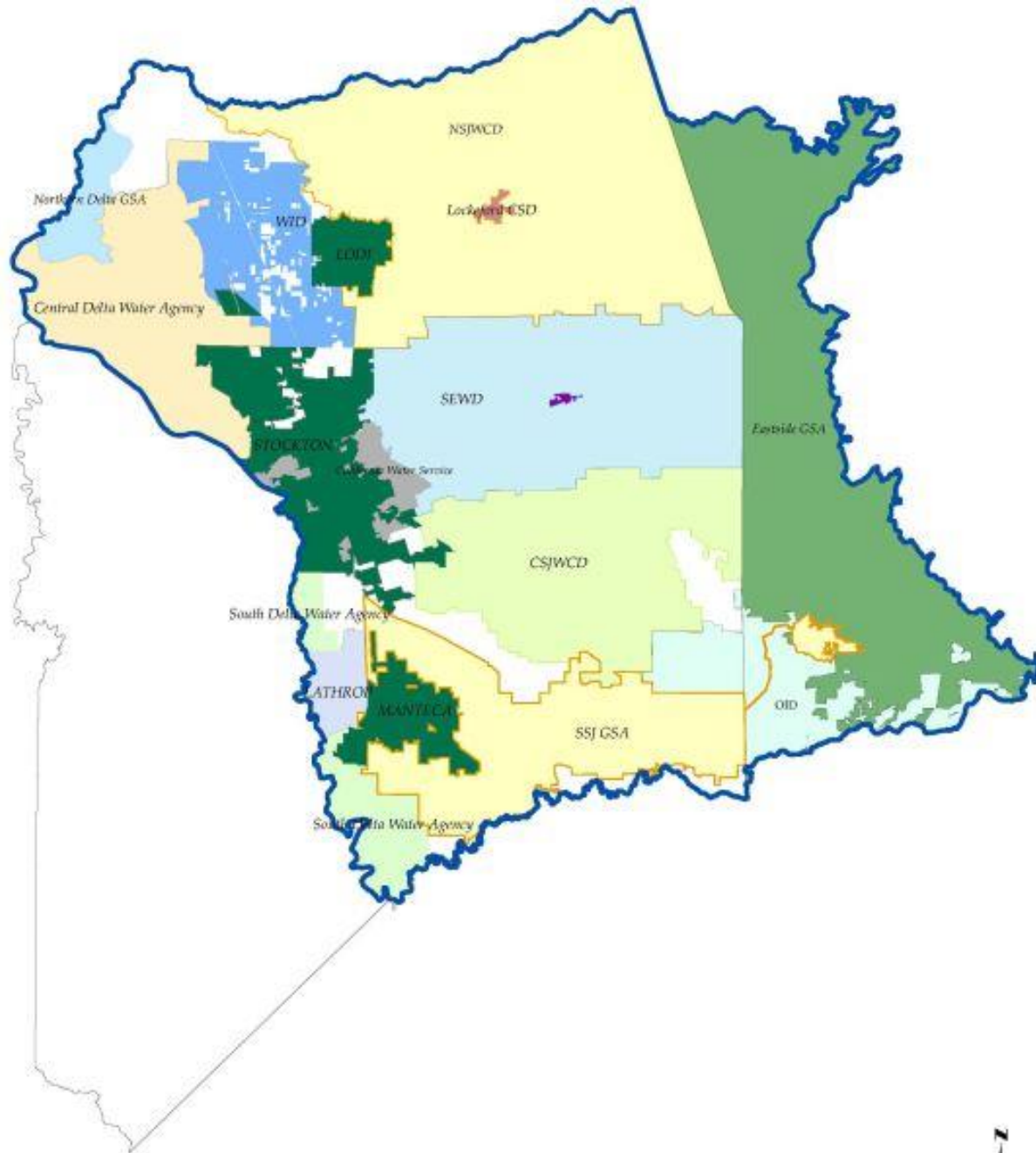
 Stanislaus County

Sources: California Department of Water Resources

Sources: Esri, DeLorme, NAVTEQ, TomTom, Intermap, Increment P Corp., GEBCO, USGS, FAO, NPS, NRCAN, GeoBase, IGN, Kadaster NL, Ordnance Survey, Esri Japan, METI, Esri China (Hong Kong), and the GIS User Community

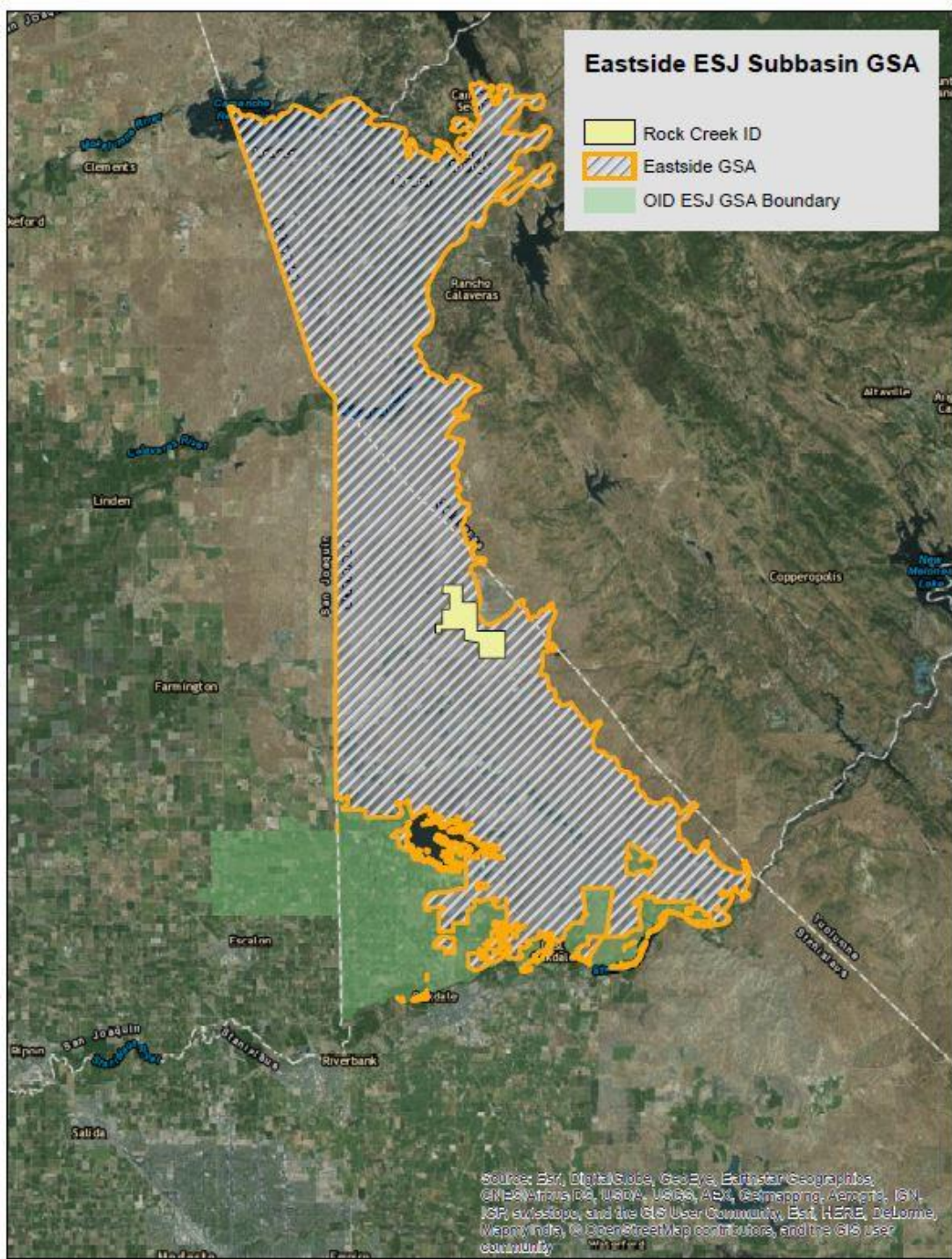
FIGURE

Eastern San Joaquin Groundwater Basin



Eastside ESJ Subbasin GSA

- Rock Creek ID
- Eastside GSA
- OID ESJ GSA Boundary



Source: Esri, DigitalGlobe, GeoEye, Earthstar Geographics, CNR/Airphoto DS, USDA, USAF, AeroX, GeoMapping, AeroGRID, IGN, ISAR, Airphoto, and the GIS User Community, Esri, HERE, DeLorme, MapmyIndia, © OpenStreetMap contributors, and the GIS user community

Eastside San Joaquin GSA

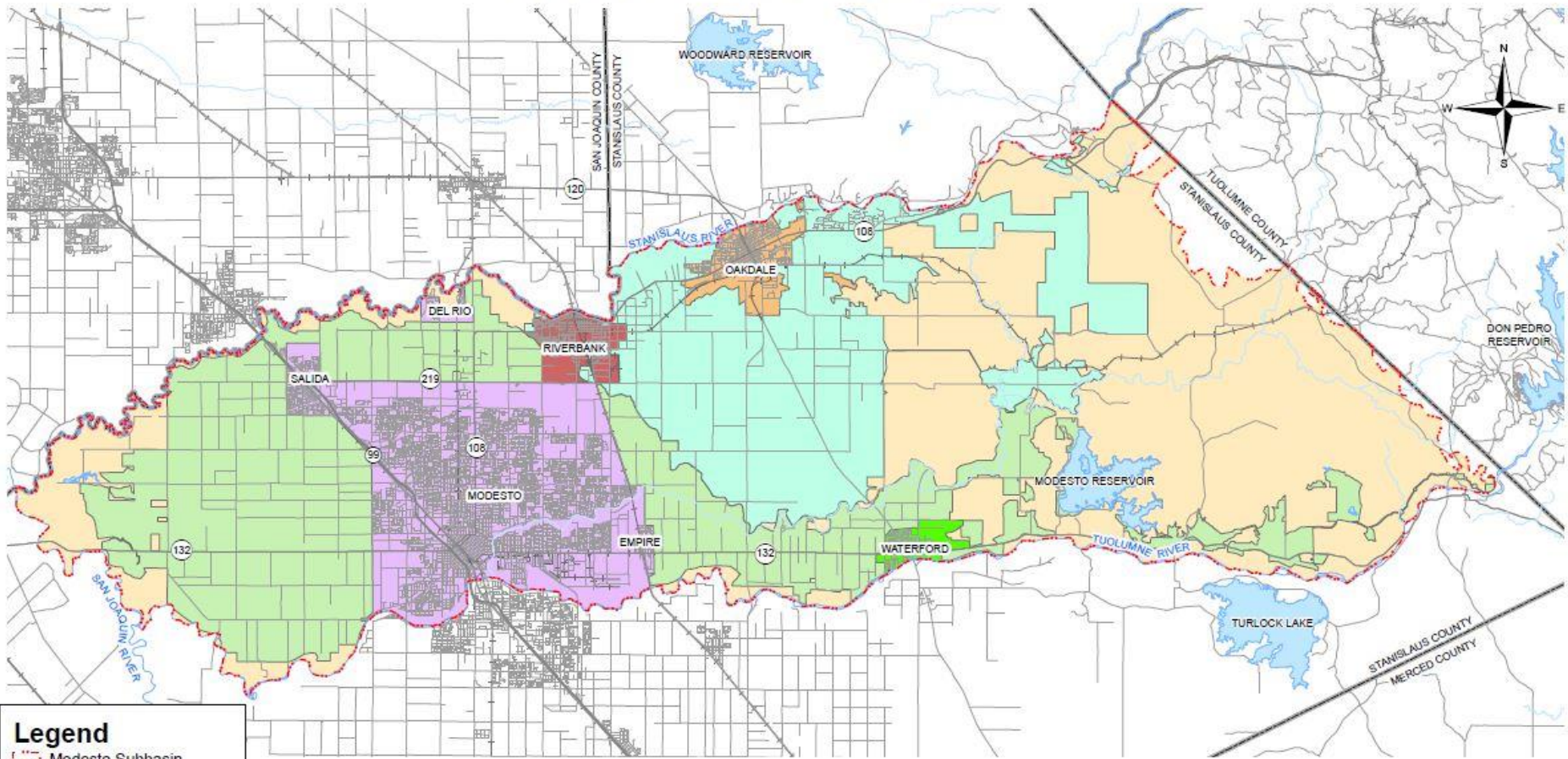
Calaveras County WD

Stanislaus County

Rock Creek WD

Modesto Groundwater Basin

Modesto Subbasin Agencies



Legend

- Modesto Subbasin
- County Lines
- Stanislaus County
- City of Modesto
- City of Oakdale
- City of Waterford
- City of Riverbank
- Oakdale Irrigation District
- Modesto Irrigation District



Stanislaus & Tuolumne Rivers Groundwater Basin Association GSA

City of Modesto

City of Oakdale

City of Riverbank

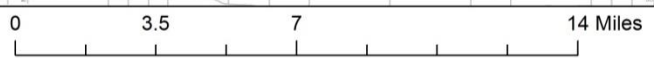
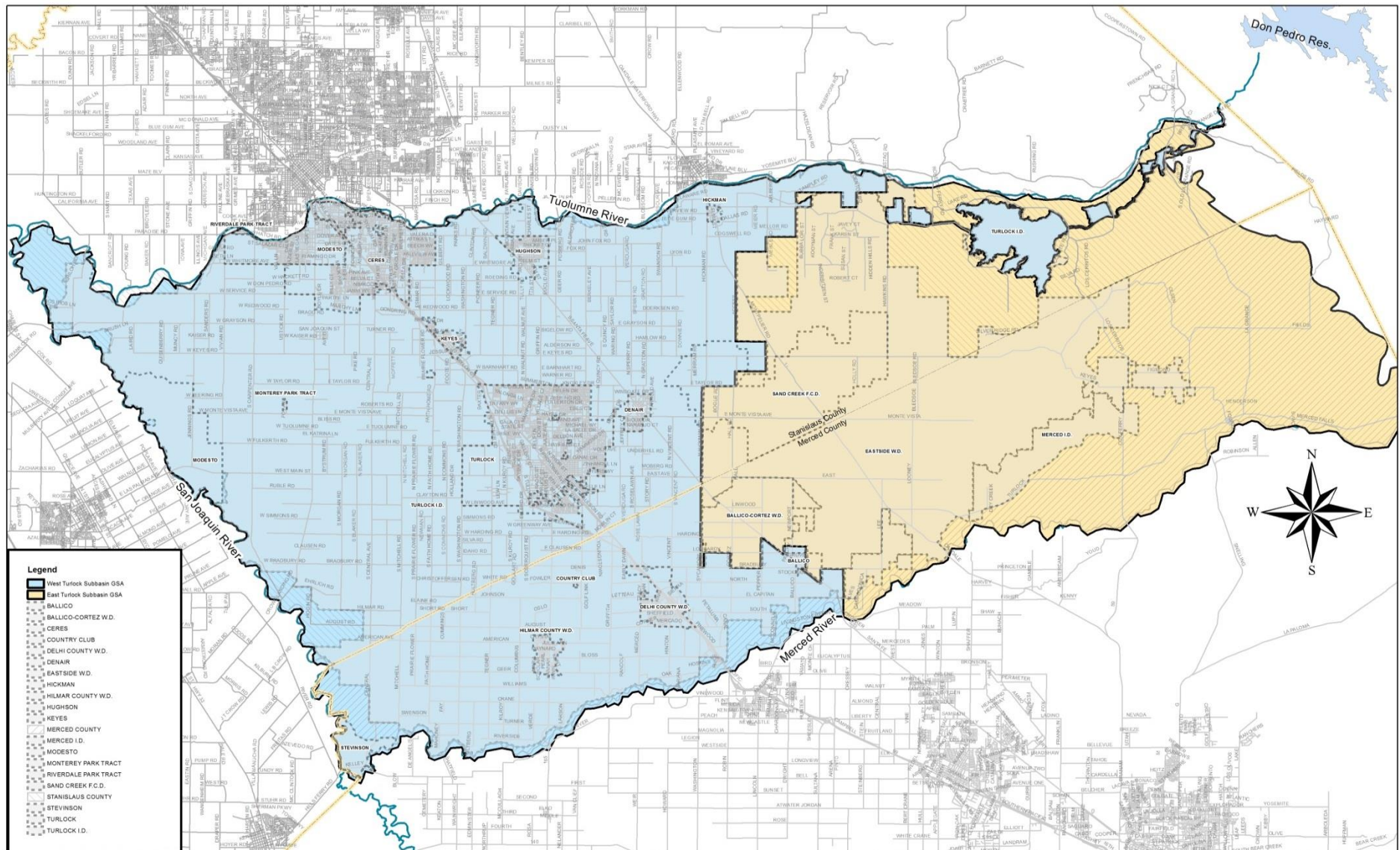
City of Waterford

Oakdale ID

Modesto ID

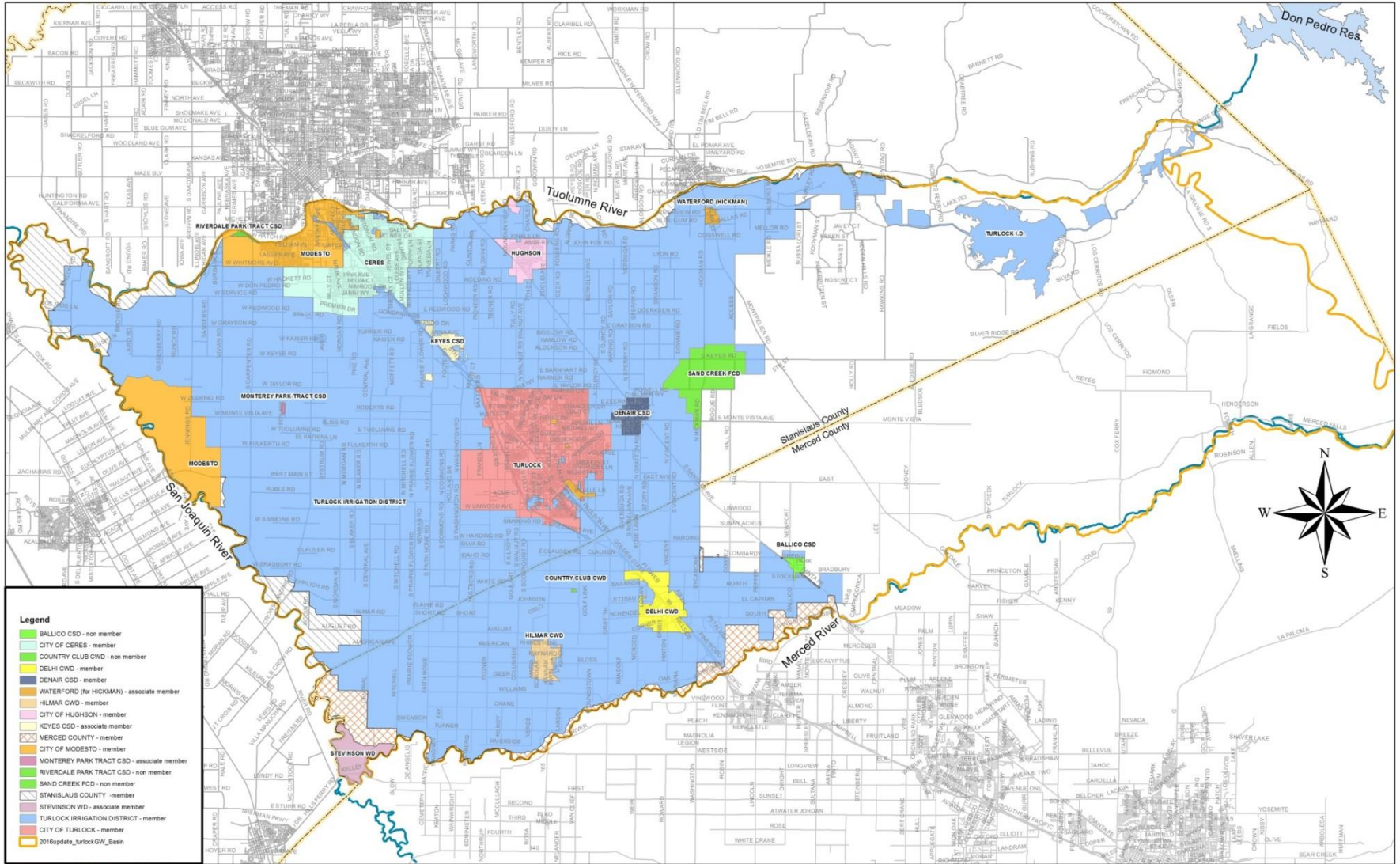
Stanislaus County

Turlock Groundwater Basin



Turlock Subbasin GSA's

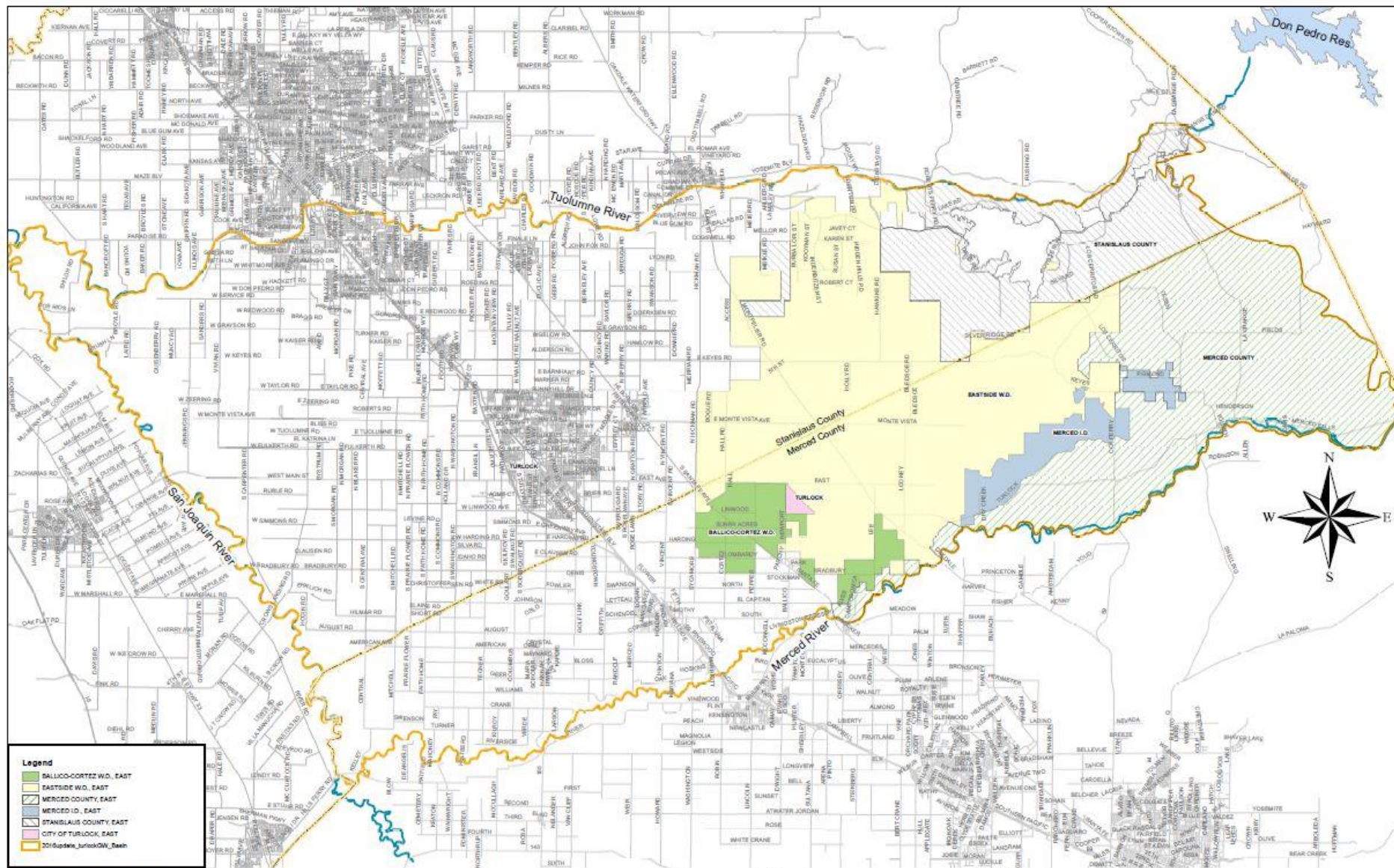
West Turlock Subbasin GSA



West Turlock Subbasin GSA

- City of Ceres
- City of Hughson
- City of Waterford
- Keyes CSD
- Delhi CWD
- Stevinson WD
- Stanislaus County
- City of Turlock
- City of Modesto
- Denair CSD
- Monterey Park CSD
- Hilmar CWD
- Turlock ID
- Merced County

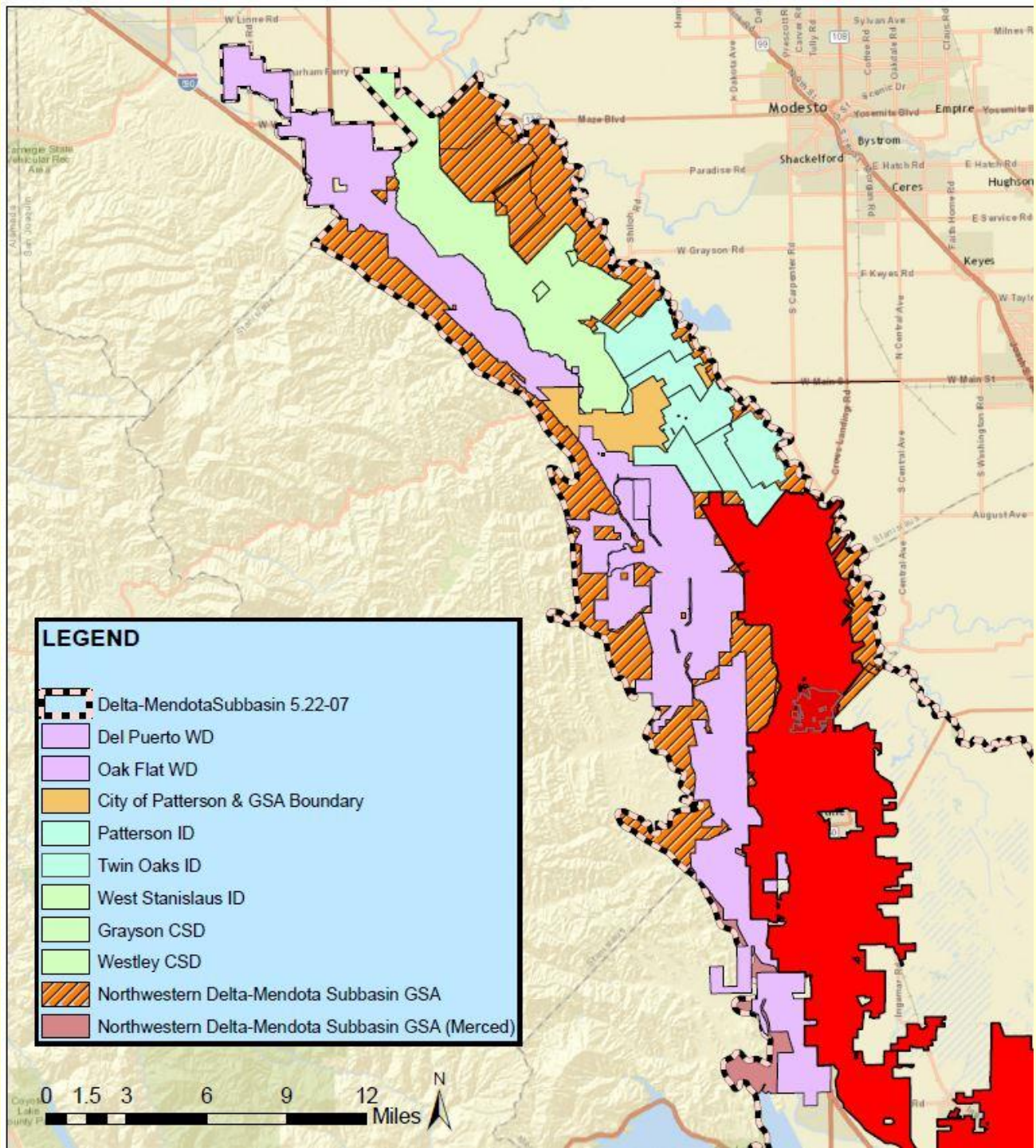
East Turlock Subbasin GSA



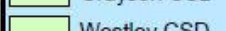

East Turlock Subbasin GSA

- Eastside WD
- Ballico-Cortez WD
- Merced Irrigation District
- City of Turlock
- Merced County
- Stanislaus County

Delta-Mendota Groundwater Basin



LEGEND

-  Delta-Mendota Subbasin 5.22-07
-  Del Puerto WD
-  Oak Flat WD
-  City of Patterson & GSA Boundary
-  Patterson ID
-  Twin Oaks ID
-  West Stanislaus ID
-  Grayson CSD
-  Westley CSD
-  Northwestern Delta-Mendota Subbasin GSA
-  Northwestern Delta-Mendota Subbasin GSA (Merced)



Northwestern Delta-Mendota Subbasin GSA

Stanislaus County

Merced County

Stanislaus County “Default” Coverage

“White” areas

El Soyo WD

Blewett MWC

Whitelakes MWC

Crows Landing CSD

Eastin WD

China Island WR

Stevinson WD

- **QUESTIONS & DISCUSSION**