

# Status Update Regarding Compliance with the Sustainable Groundwater Management Act (SGMA) in Stanislaus County

*Stanislaus County Water Advisory  
Committee*

*January 26, 2022*

# Sustainable Groundwater Management Act (2014)

- Investigate and determine the Basin’s Sustainable Yield
  - “Sustainable Management Criteria” including the determination of local appropriate Minimum Thresholds and Measurable Objectives standards used to avoid Undesirable Results in 6 Resource Areas:
    - Sea Water Intrusion
    - Land Subsidence
    - Water Quality Degradation
    - Intercepted Surface Water
    - Chronic Lowering of Water Levels
    - Significant Reduction of Storage
- Implement Management Actions and Projects to achieve and maintain sustainability as defined in the adopted GSP
- Collect pertinent groundwater monitoring information to demonstrate sustainability and GSP implementation

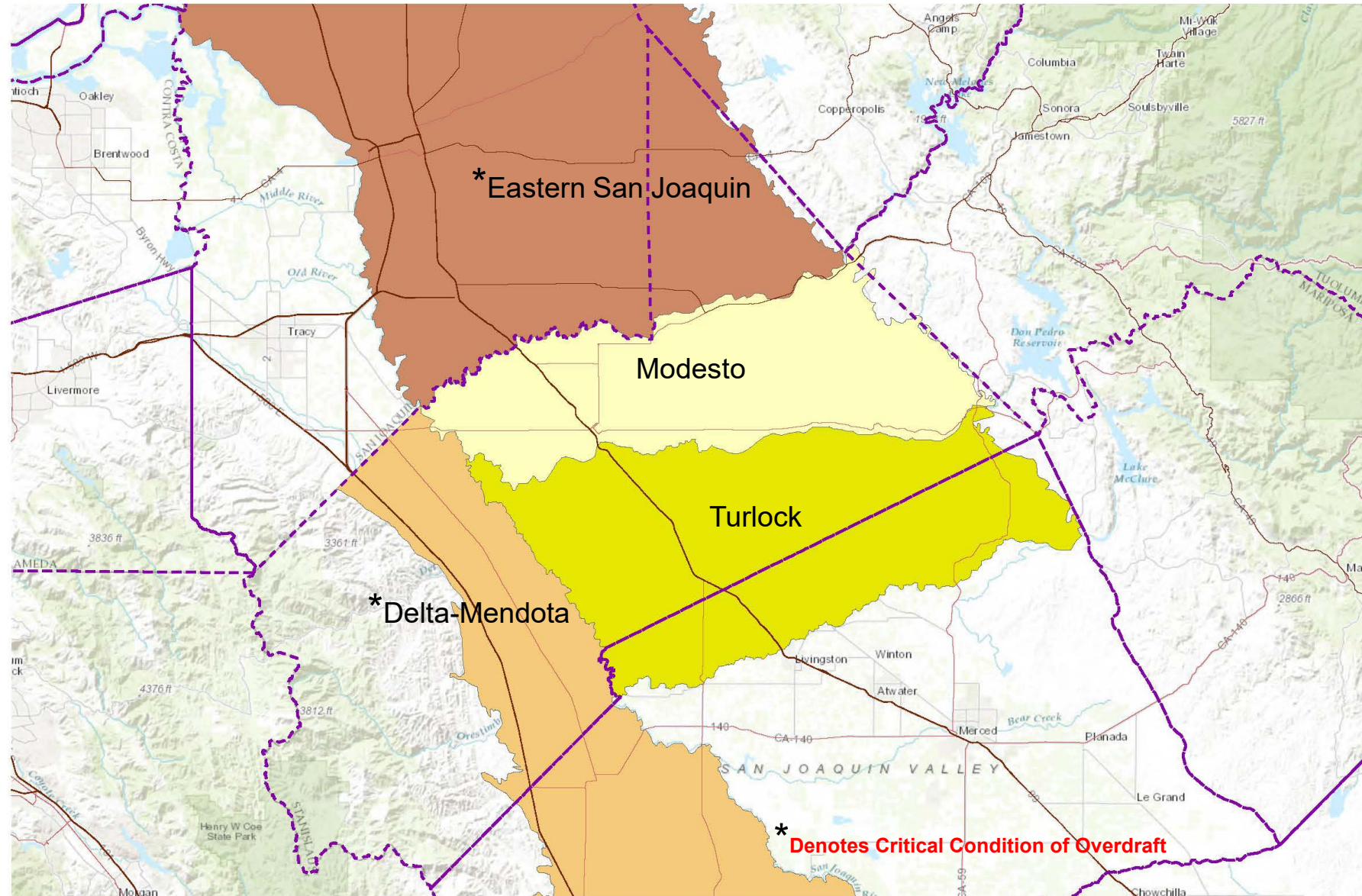
Modesto & Turlock Subbasins are classified as High Priority and not in a condition of critical overdraft



Most subbasins in the San Joaquin Valley are classified as being in a condition of Critical Overdraft



# Stanislaus County Groundwater Basins



# Summary of GSA Formation and GSP Preparation

## Delta-Mendota Subbasin (**January 2020**)

Multiple-GSAs/Multiple GSPs

*Northwestern Delta-Mendota GSA (MOU)*

## Turlock Subbasin (**January 2022**)

2 GSAs/1 GSP

*East Turlock & West Turlock GSA (JPAs)*

## Modesto Subbasin (**January 2022**)

2 GSAs/1 GSP

*Stanislaus & Tuolumne Rivers Groundwater Basin Association GSA (MOU)*

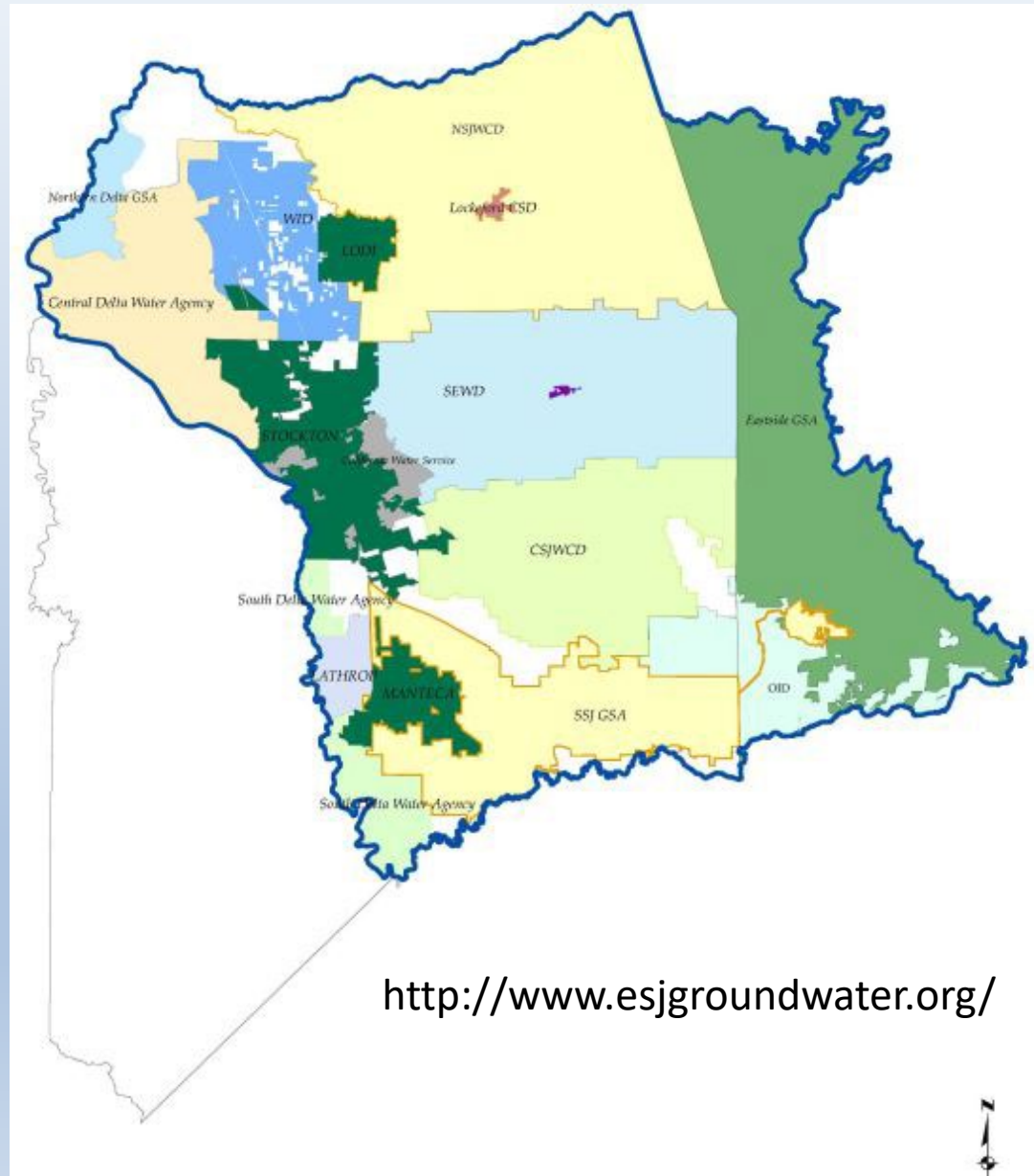
*Tuolumne County GSA*

## Eastern San Joaquin Subbasin (**January 2020**)

Multiple-GSAs/1 GSP

*Eastside San Joaquin GSA (MOU)*

# Eastern San Joaquin Groundwater Basin

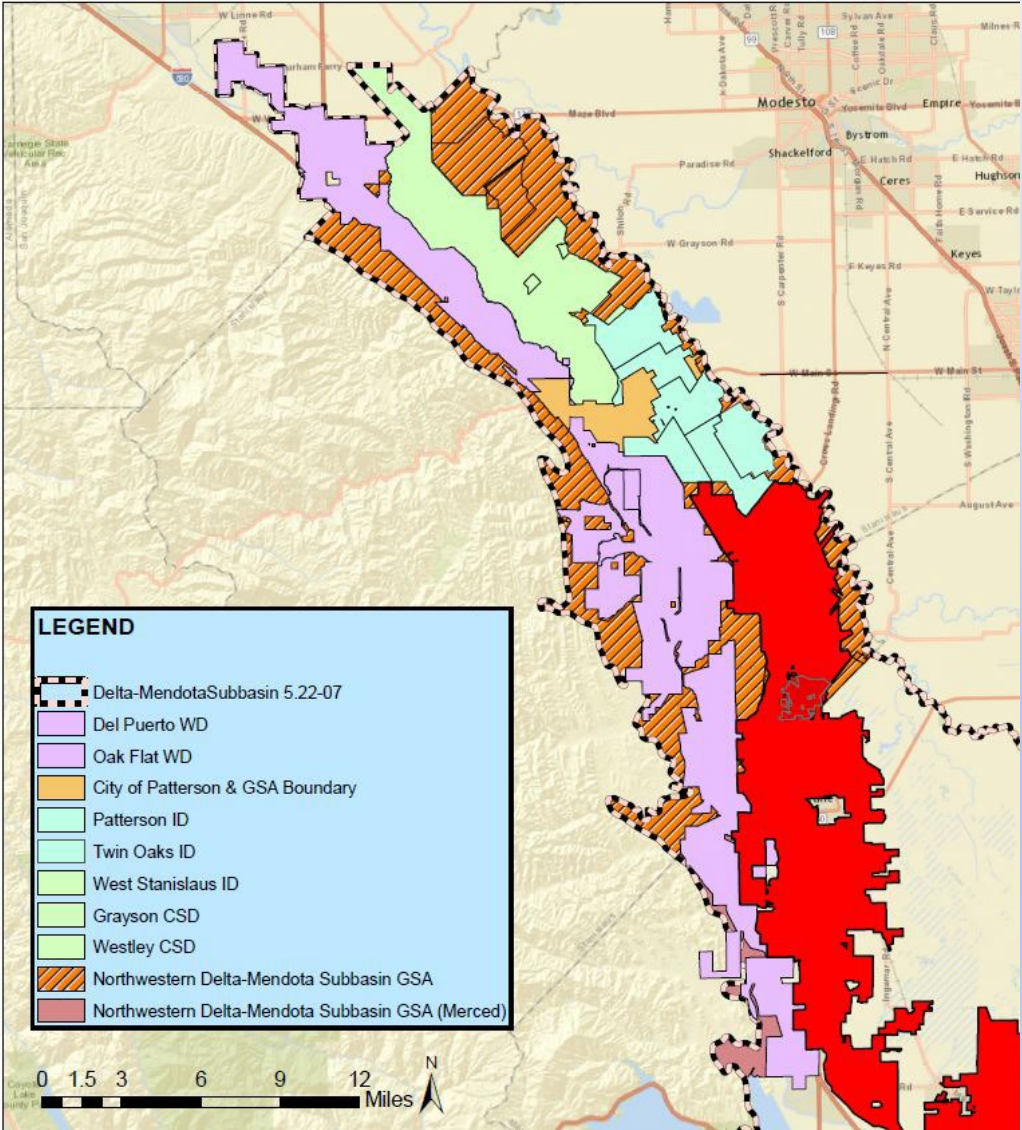


<http://www.esjgroundwater.org/>



# Delta-Mendota Subbasin –Northern Group

<http://deltamendota.org/learn-more/northern-central-delta-mendota-gsp/>

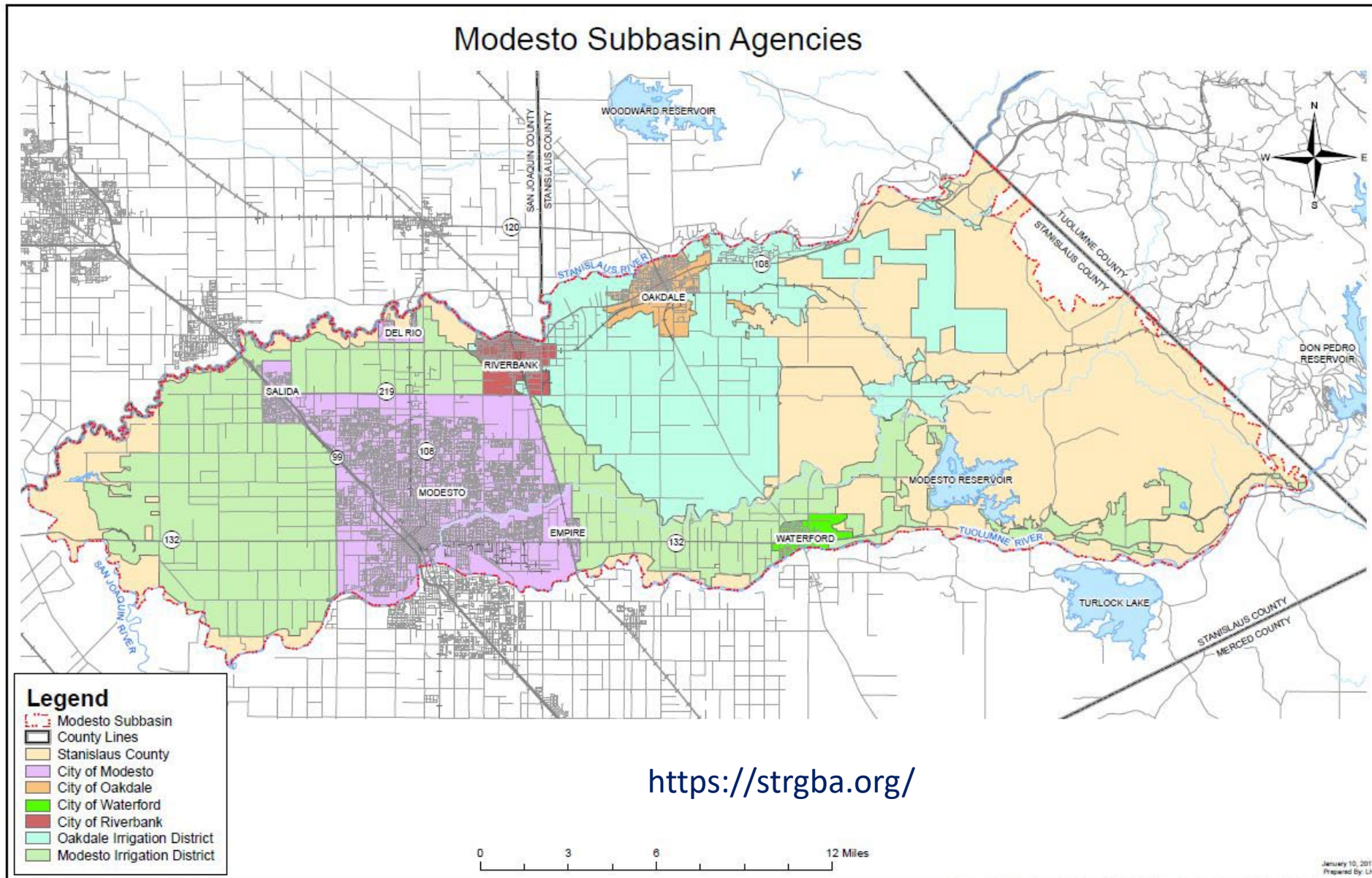


# Eastern San Joaquin GSP and Northern & Central Delta-Mendota Region GSP Implementation Schedule

- 2022 Annual Report due April 1<sup>st</sup>
  - Previous Water Year (October 1, 2020 through September 30, 2021)
- Reviewing and Responding to letters of GSP “inadequacy” from DWR
  - 180 day process
  - DWR/SWRCB action?
- New round of grant funding for groundwater recharge projects
  - Round 1: Critical Overdraft Basins
  - Round 2: Medium & High Priority Basins

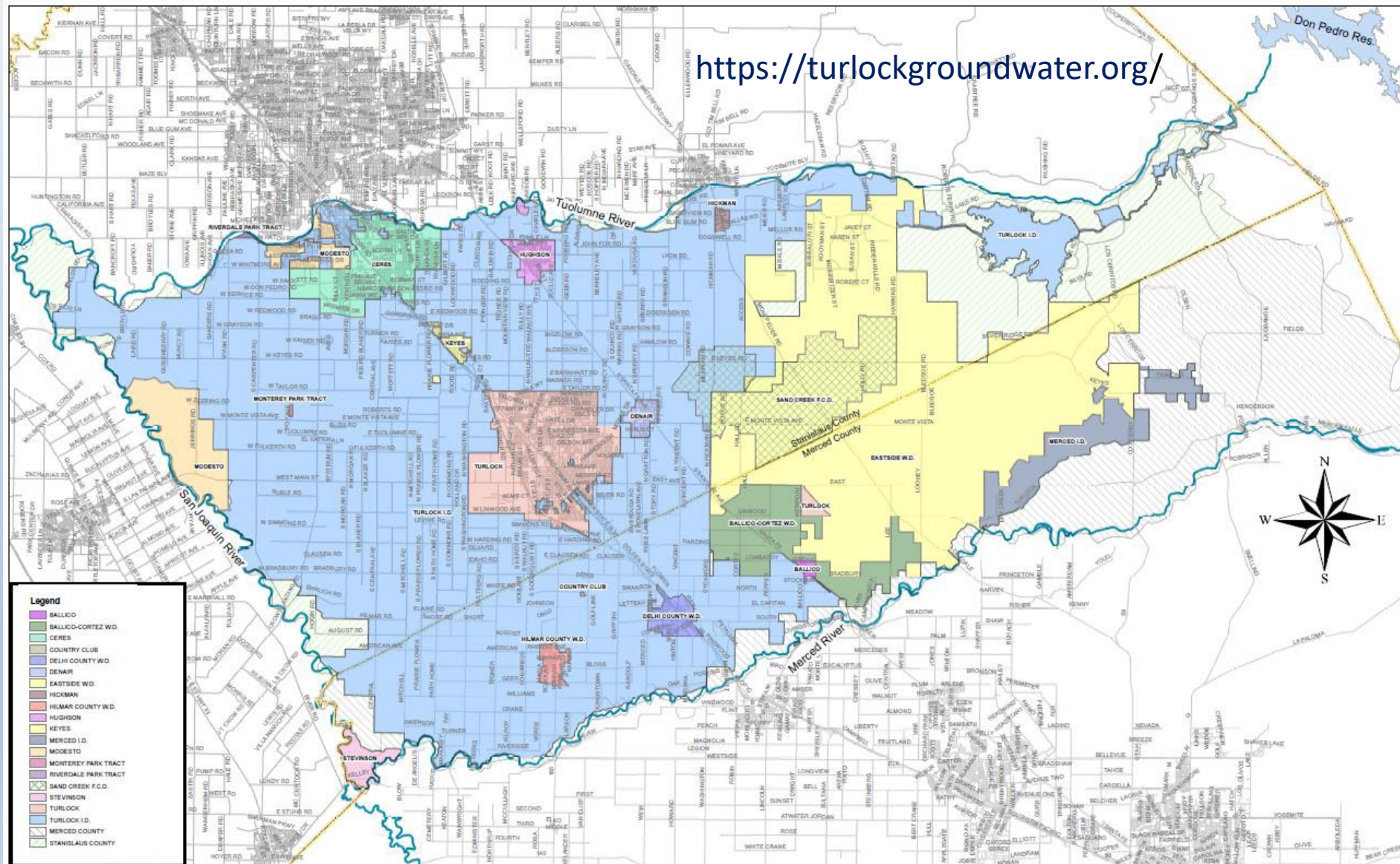


# Modesto Groundwater Basin





# Turlock Groundwater Basin



# Schedule

- Both the Turlock and Modesto Groundwater Subbasin GSPs have been completed
  - Turlock: Adopted on January 6, 2022 by WTS & ETS GSAs
  - Modesto: To be Adopted on January 31, 2022 by STRGBA GSA
- Formal submittal of GSPs to SGMA Portal
  - DUE: January 31, 2022
- Prepare Annual Report
  - Due April 1, 2022 (No Fooling!)
    - 2021 Water Year (10/1/20 – 9/30/21)

# Grant Funding Process

- \$300M split over three FYs for SGMA Implementation, \$180M in FY 21/22.
- \$60M of the \$180M earmarked for groundwater basins within the San Joaquin Valley (SJV)
- For the following purposes:
  - (a) geophysical investigations of groundwater basins to identify recharge potential;
  - (b) early implementation of an existing regional flood management plan incorporating groundwater recharge;
  - (c) projects that would complement a Groundwater Sustainability Plan efforts to provide for floodplain expansion to benefit groundwater recharge or habitat.



# Grant Funding Process

- Monitor and Prepare for next round of SGMA implementation Grant Funding from DWR
  - **Round 1:** Focus on COD Basins (\$40M for SJV)
    - 1 Grant/Basin
    - Cap at \$7.6 Million per each
    - Grant Solicitation Closes: February 18, 2022
    - Execute Agreements: May, 2022
  - **Round 2:** Other Medium & High Priority Basins
    - Minimum Grant Award: \$1 M per Basin
    - Maximum Grant Award: \$20 M per Basin
    - Traditional Competitive Process
    - Scheduled to begin in late 2022
      - Execute Agreements in Summer 2023

# Questions & Discussion