

Status Update Regarding
Compliance with the Sustainable
Groundwater Management Act
(SGMA) in Stanislaus County

Stanislaus County

Water Advisory Committee Meeting

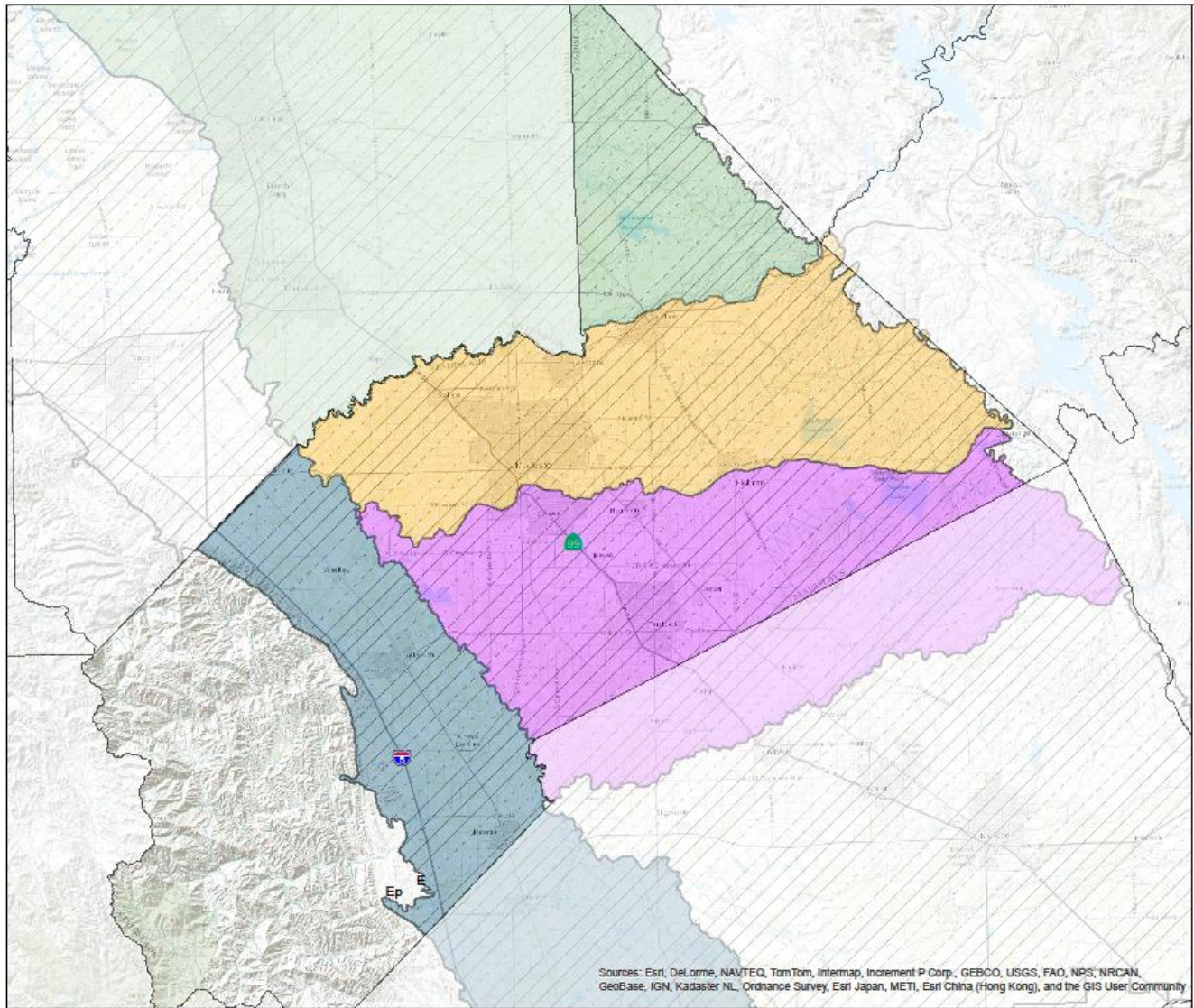
January 30, 2019

Sustainable Groundwater Management Act (2014)

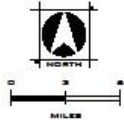
- Agencies electing to become GSAs are given broad powers and authority regarding groundwater management, including:
 - Develop and Implement Groundwater Sustainability Plans (GSPs)
 - 50 Year Planning Horizon
 - 20 Year Implementation Period
 - 5 Year Updates
 - 1 Year Reporting
 - Investigate and determine the sustainable yield of a groundwater basin
 - Collect pertinent groundwater monitoring information
 - Enforcement

Important Milestones

- *GSA formation deadline June 30, 2017*
- GSP adoption deadline:
 - January 31, 2020 (critical condition of overdraft)
 - January 31, 2022 (high & medium priority basins)
- If those deadlines are missed, or if the DWR determines that a plan is not adequate to achieve the sustainability goal, the State Water Resources Control Board ("Board") will have the ability to step in and impose its own "interim" plan until an acceptable local plan is in place.



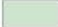
GROUNDWATER BASIN AND SUBBASIN MAP
STANISLAUS COUNTY, CALIFORNIA
 APRIL 2014



Groundwater Basin

 San Joaquin Valley

Subbasin


 Eastern San Joaquin

 Modesto

 Turlock

 Delta-Mendota

County

 Stanislaus County

Sources: California Department of Water Resources



FIGURE

Summary of GSA Formation and GSP Preparation

Delta-Mendota Subbasin

Multiple-GSAs/Multiple GSPs (Formal "Coordination Agreement")

Northwestern Delta-Mendota GSA

Turlock Subbasin

2 GSAs/1 GSP

East Turlock & West Turlock GSA

Modesto Subbasin

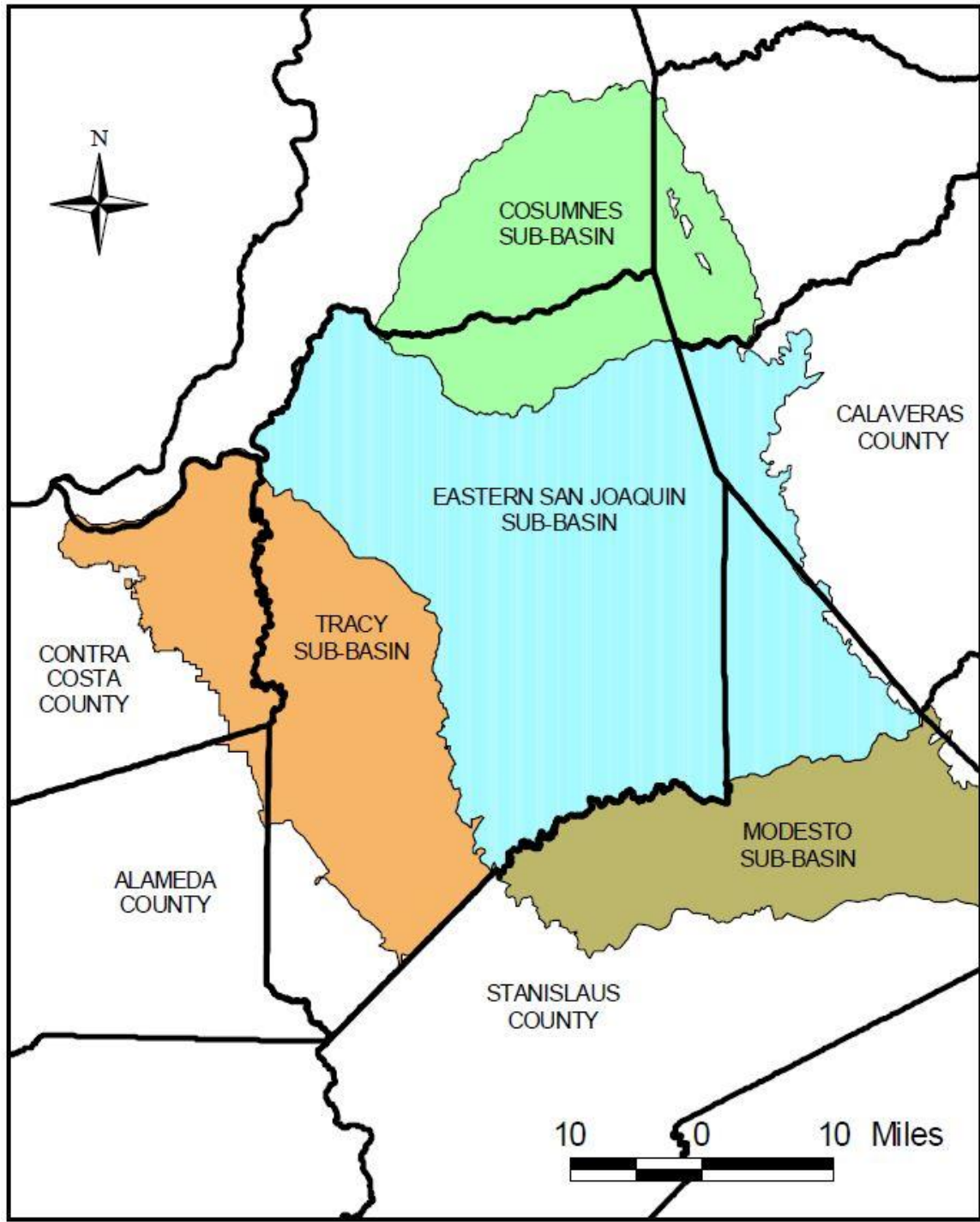
1 GSA/1 GSP

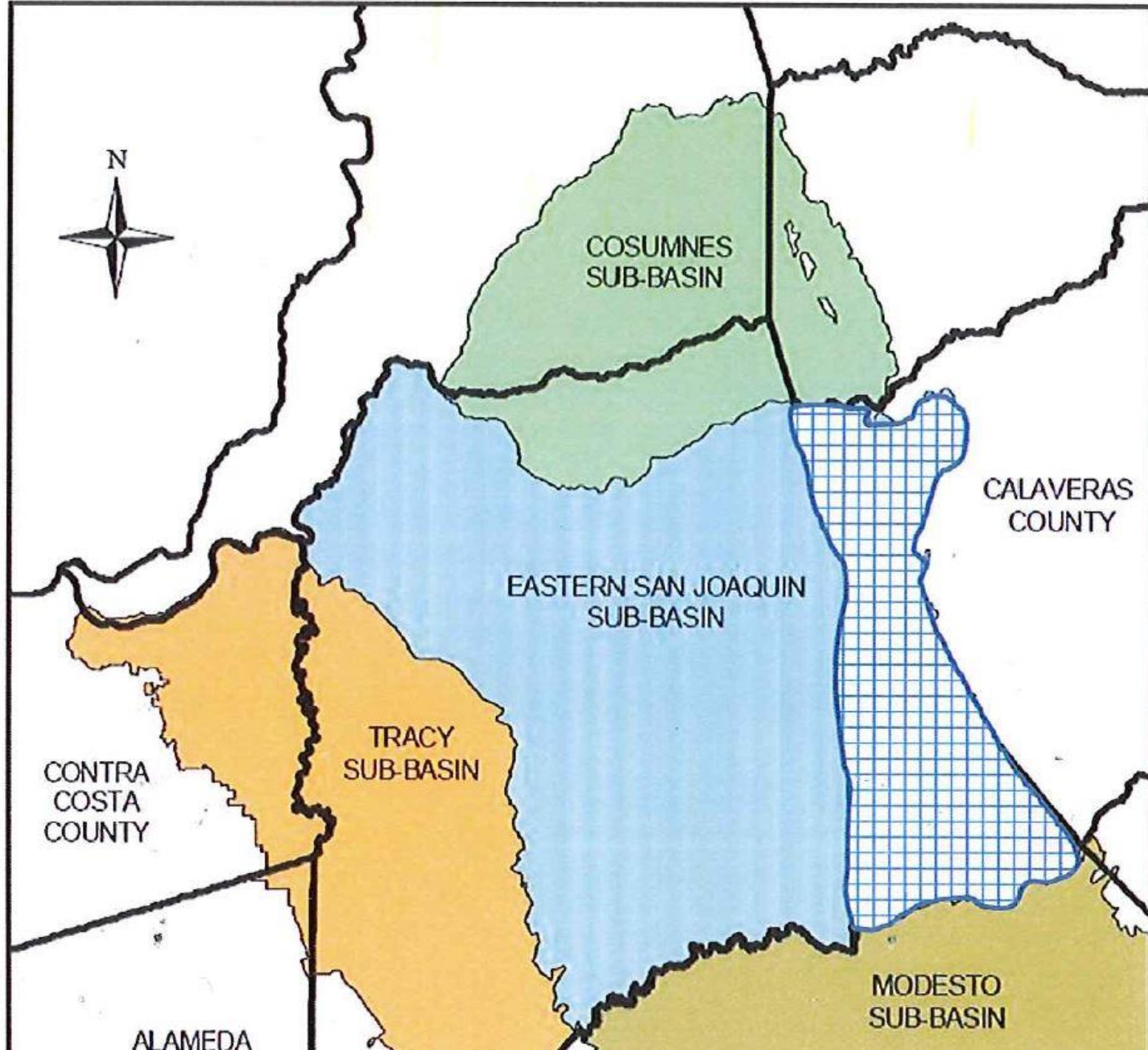
Stanislaus & Tuolumne Rivers Groundwater Basin Association GSA

Eastern San Joaquin Subbasin

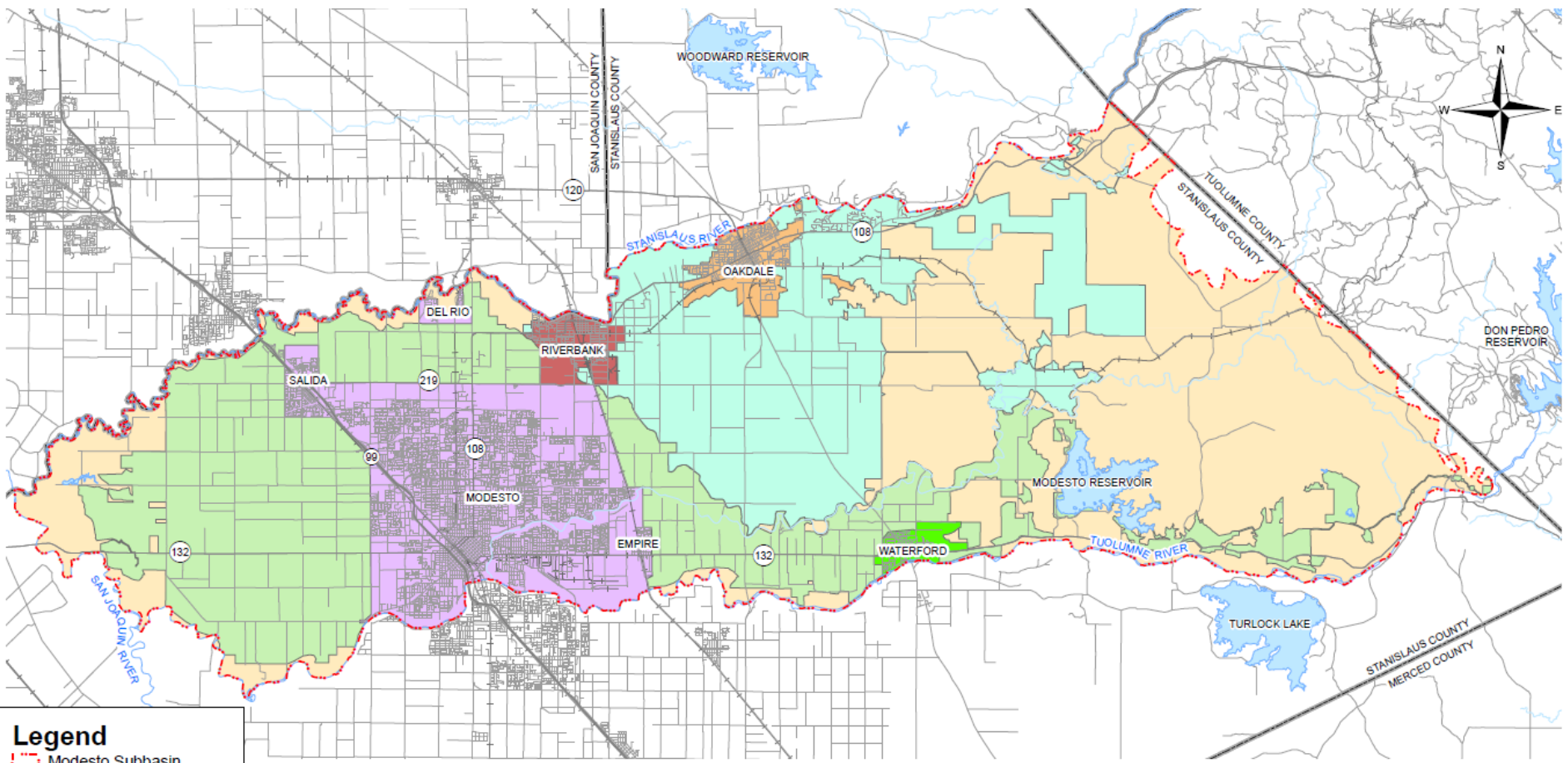
Multiple-GSAs/1 GSP

Eastside San Joaquin GSA



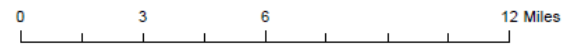


Modesto Subbasin Agencies

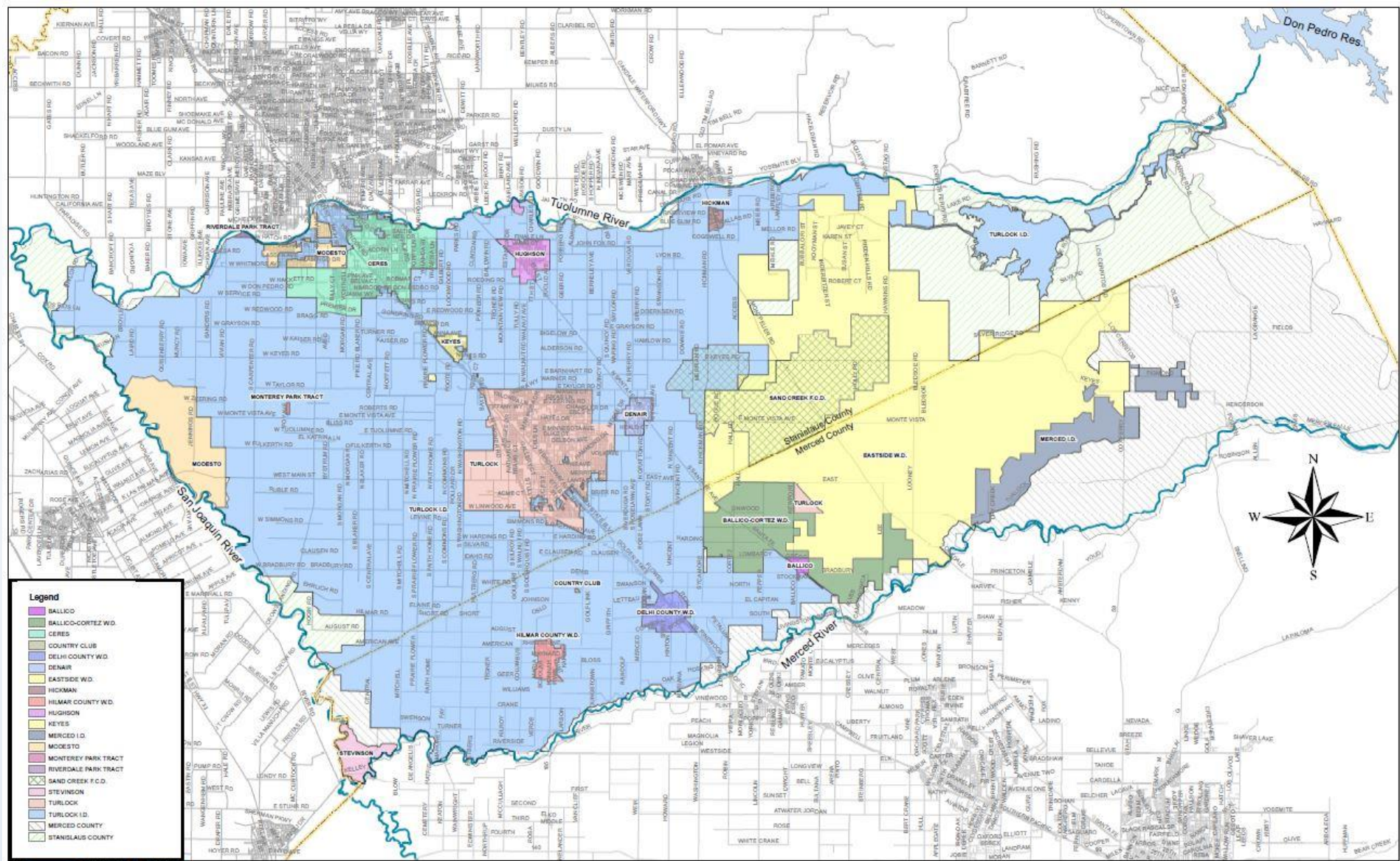


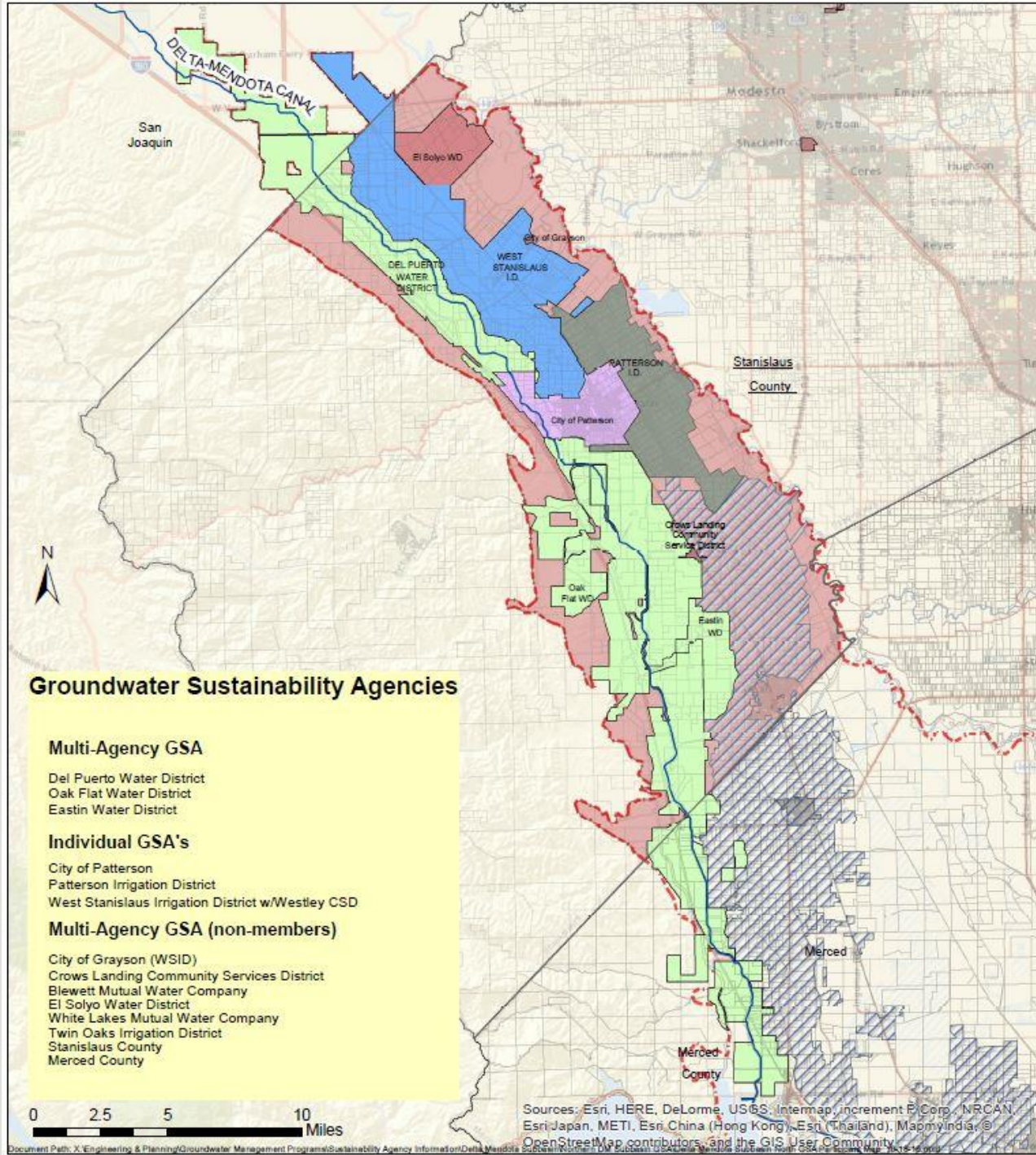
Legend

- Modesto Subbasin
- County Lines
- Stanislaus County
- City of Modesto
- City of Oakdale
- City of Waterford
- City of Riverbank
- Oakdale Irrigation District
- Modesto Irrigation District



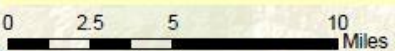
January 10, 2017
Prepared By: LH





Groundwater Sustainability Agencies

- Multi-Agency GSA**
 - Del Puerto Water District
 - Oak Flat Water District
 - Eastin Water District
- Individual GSA's**
 - City of Patterson
 - Patterson Irrigation District
 - West Stanislaus Irrigation District w/Westley CSD
- Multi-Agency GSA (non-members)**
 - City of Grayson (WSID)
 - Crows Landing Community Services District
 - Blewett Mutual Water Company
 - El Solyo Water District
 - White Lakes Mutual Water Company
 - Twin Oaks Irrigation District
 - Stanislaus County
 - Merced County



Sources: Esri, HERE, DeLorme, USGS, Intermap, increment P Corp., NRCAN, Esri Japan, METI, Esri China (Hong Kong), Esri (Thailand), MapmyIndia, © OpenStreetMap contributors, and the GIS User Community.

Current Activities

- All GSAs made June 30, 2017 deadline
- Each of the four basins gained approval for State grants
 - Eastern San Joaquin & Delta-Mendota = \$1.5 million
 - Modesto & Turlock = \$ 1.0 million
 - GSPs are under preparation (**Substantial Compliance**)
 - Land Use/ Water Use data collection (baseline, existing and forecasted)
 - Basin Hydrologic Conceptual Model (HCM) and cross-sections
 - Various groundwater models being used for Water Budget
 - Project List (managed recharge) and Potential Funding
- Public Draft released mid-summer 2019 for ESJ and D-M basins
- Individual agency review and approval targeted for Fall 2019
- Meet January 2020 filing deadline with DWR (Mod/Tur => 2 years later)

Questions & Discussion