

Stanislaus County Water Advisory Committee

January 27, 2021

Status Update Regarding
Compliance with the Sustainable
Groundwater Management Act
(SGMA) in Stanislaus County

Sustainable Groundwater Management Act (2014)

- Agencies electing to become GSAs are given broad powers and authority regarding groundwater management, including:
 - Local Control
 - Develop and Implement Groundwater Sustainability Plans (GSPs)
 - 50 Year Planning Horizon
 - 20 Year Implementation Period
 - 5 Year Updates/Annual Reporting

Sustainable Groundwater Management Act (2014)

- Investigate and determine the Basin's Sustainable Yield
 - Sustainable Management Criteria including the determination of local appropriate Minimum Thresholds and Measurable Objectives standards used to avoid Undesirable Results in 6 Resource Areas:
 - Sea Water Intrusion
 - Land Subsidence
 - Water Quality Degradation
 - Intercepted Surface Water
 - Chronic Lowering of Water Levels
 - Significant Reduction of Storage
- Implement Management Actions and Projects
- Collect pertinent groundwater monitoring information to demonstrate sustainability and GSP implementation

Important Milestones

- *GSA formation deadline June 30, 2017*
- GSP adoption deadline:
 - January 31, 2020 (critical condition of overdraft)
 - January 31, 2022 (high & medium priority basins)
- If those deadlines are missed, or if the DWR determines that a plan is not adequate to achieve the sustainability goal, the State Water Resources Control Board ("Board") will have the ability to step in and impose its own "interim" plan until an acceptable local plan is in place.



Groundwater basin/subbasin

Critically Overdrafted Groundwater Basins

DWR Region Office boundary

County boundary

0 15 30 60 Miles

Critically Overdrafted Basins

Basin Number	Basin/Subbasin Name
North Central Region	
5-22.01	Eastern San Joaquin
South Central Region	
3-01	Soquel Valley
3-02	Pajaro Valley
3-04.01	180/400 Foot Aquifer
3-04.06	Paso Robles Area
3-08	Los Osos Valley
3-13	Cuyama Valley
5-22.04	Merced
5-22.05	Chowchilla
5-22.06	Madera
5-22.07	Delta-Mendota
5-22.08	Kings
5-22.09	Westside
5-22.11	Kaweah
5-22.12	Tulare Lake
5-22.13	Tule
5-22.14	Kern County

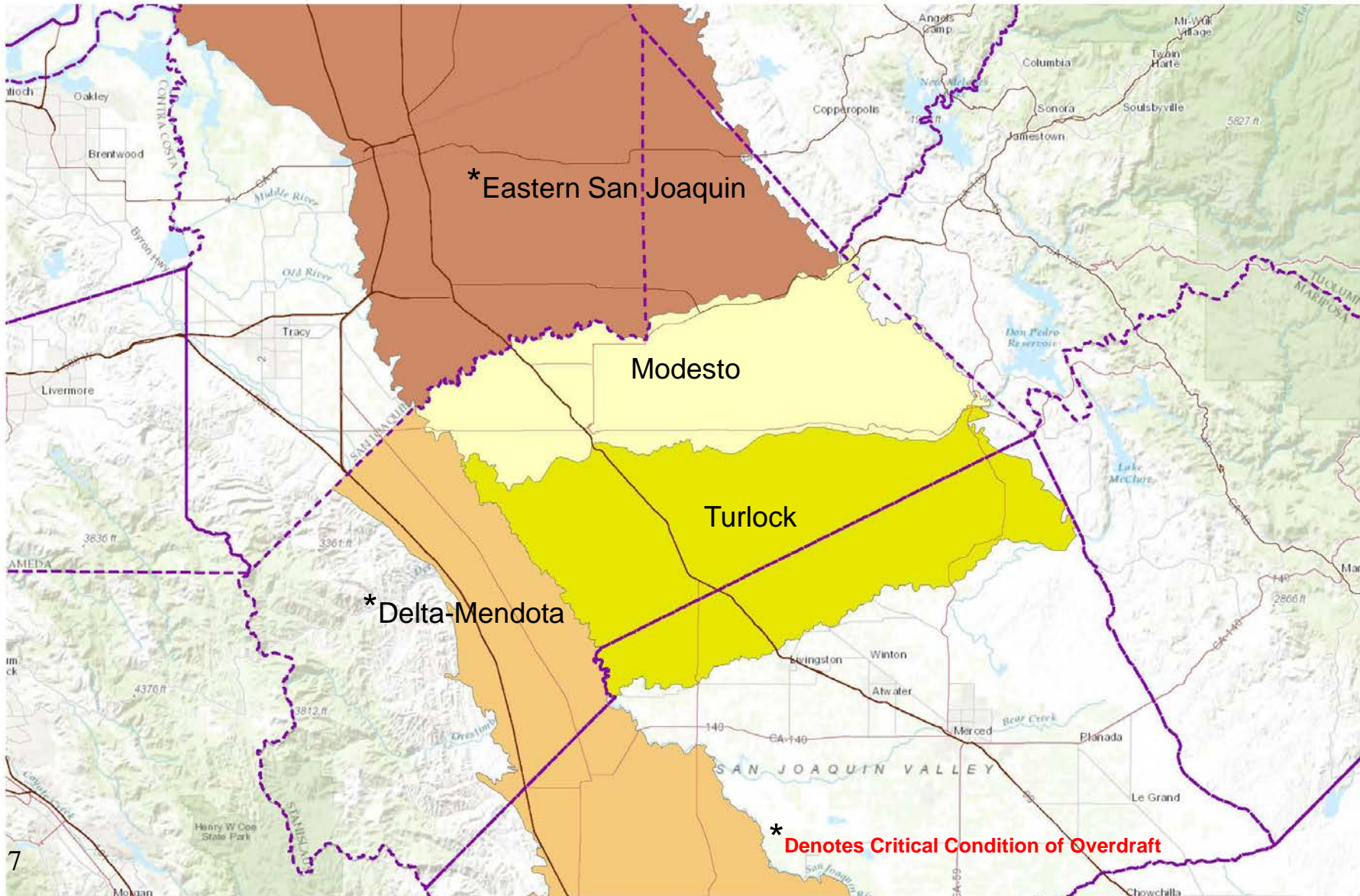
Total number of Basins/subbasins: 17
 January 1, 2016



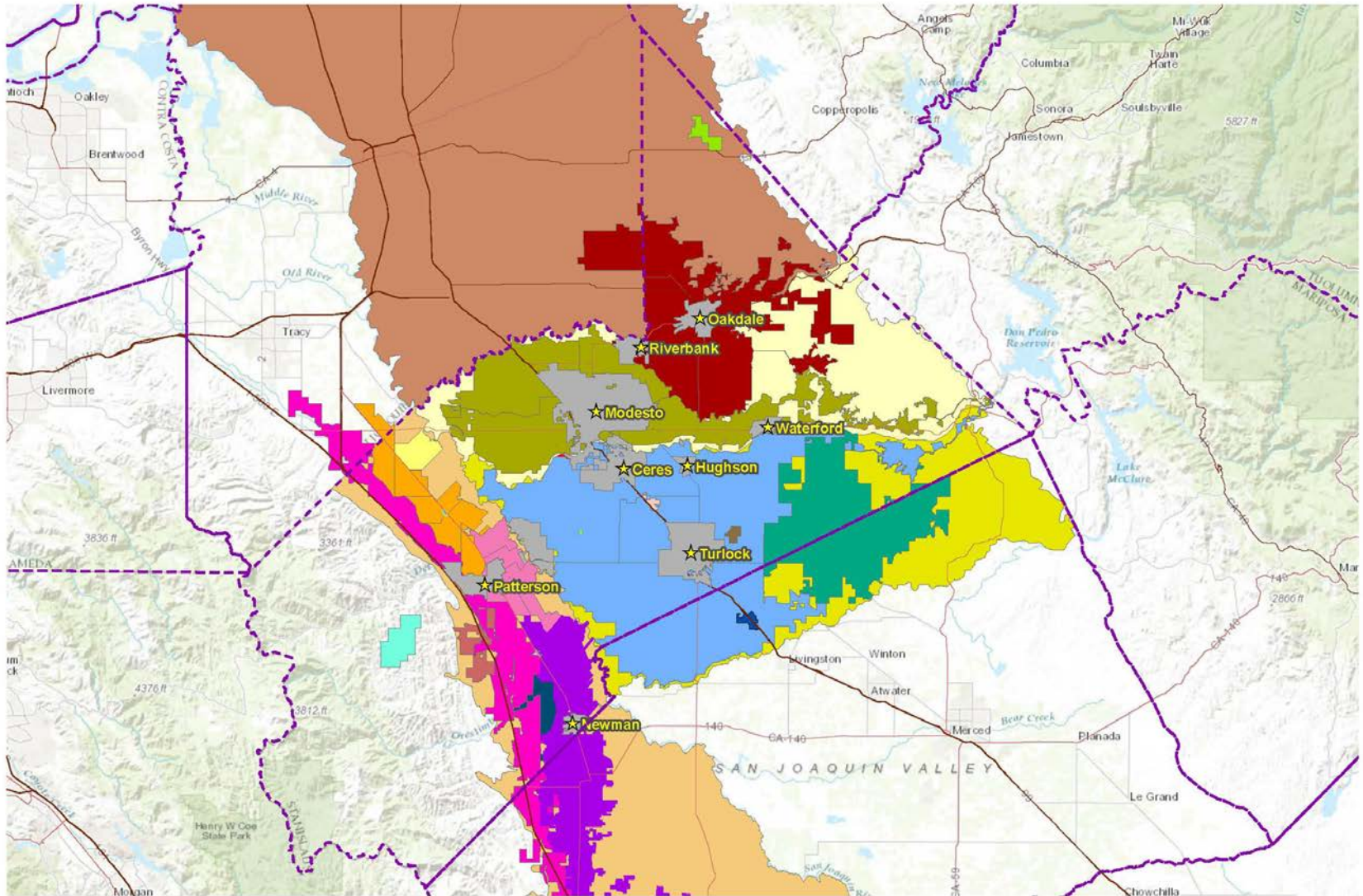
North Central Region Office

South Central Region Office

Stanislaus County Groundwater Basins



Stanislaus County Water Agencies



Summary of GSA Formation and GSP Preparation

Delta-Mendota Subbasin

Multiple-GSAs/Multiple GSPs

Northwestern Delta-Mendota GSA (MOU)

Turlock Subbasin

2 GSAs/1 GSP

East Turlock & West Turlock GSA (JPAs)

Modesto Subbasin

1 GSA/1 GSP

Stanislaus & Tuolumne Rivers Groundwater Basin Association
GSA (MOU)

Eastern San Joaquin Subbasin

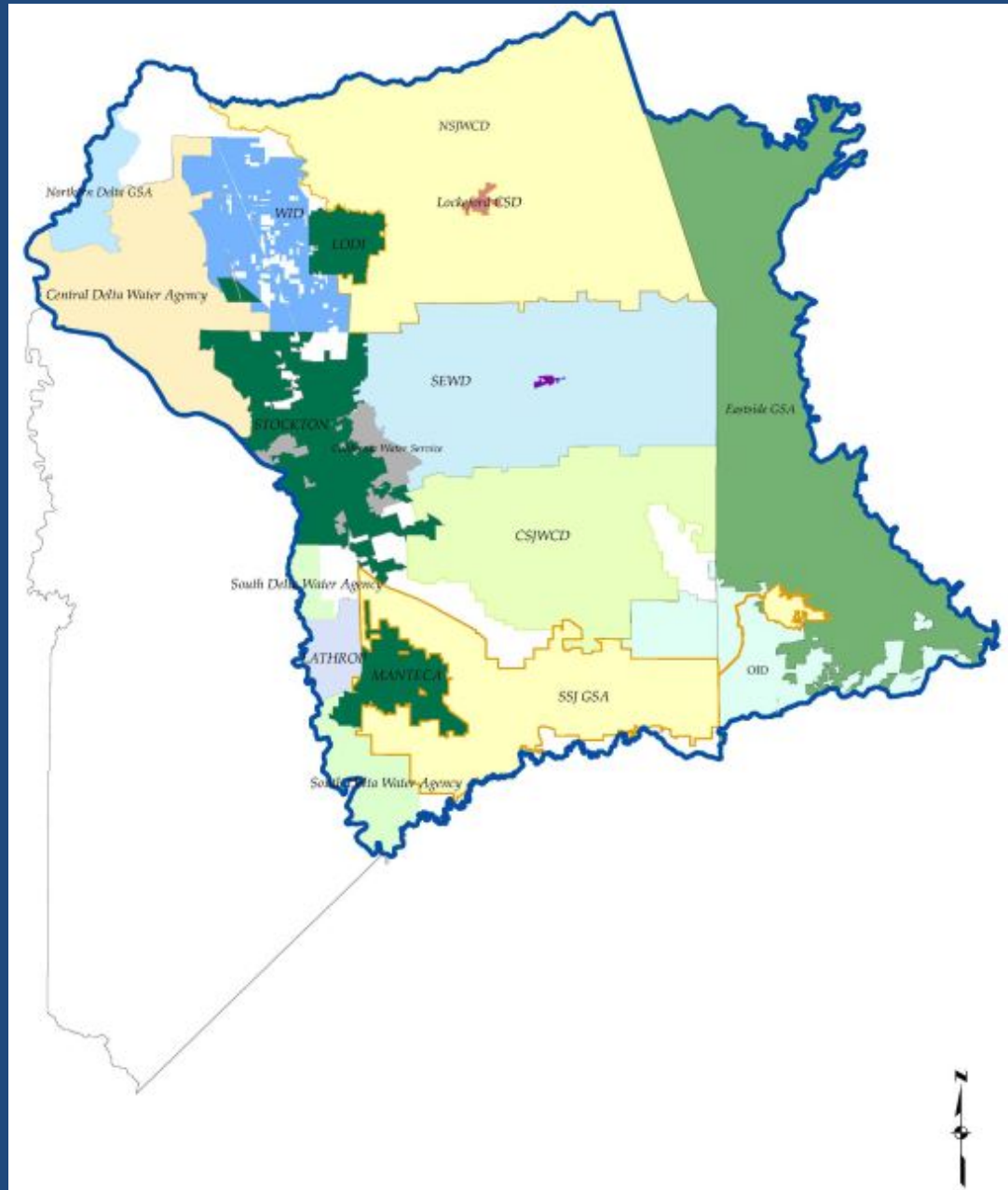
Multiple-GSAs/1 GSP

Eastside San Joaquin GSA (MOU)

GSA/GSP Activities

- All GSAs made June 30, 2017 deadline
- Each of the four basins approval for State Grant Funding
 - Eastern San Joaquin & Delta-Mendota = \$1.5 million
 - Modesto & Turlock = \$ 1.0 million
 - GSP Preparation (**Substantial Compliance target**)
 - Land Use/ Water Use data collection (baseline, existing and forecasted)
 - Basin Hydrologic Conceptual Model (HCM) and cross-sections
 - Various groundwater models being used for Water Budget
 - Project List (managed recharge) and Potential Funding
- Eastern San Joaquin GSP and Northern & Central Delta Mendota Region GSP adopted and submitted to DWR in January, 2020
- Modesto Subbasin GSP and Turlock Subbasin GSP on target for late 2021 finalization and submittal to DWR by January 31, 2022

Eastern San Joaquin Groundwater Basin



Eastern San Joaquin Subbasin GSAs

- City of Lodi
- City of Manteca
- City of Stockton
- Linden CWD
- Lockeford CSD
- Stockton East WD
- Woodbridge ID
- Oakdale ID
- South San Joaquin ID
- Central Delta Water Agency
- South Delta Water Agency
- Central San Joaquin Water Conservation District
- North San Joaquin Water Conservation District
- San Joaquin County/California Water Company
- *Eastside San Joaquin GSA (Stanislaus & Calaveras Counties)*

Additional Grant Funding Activities (\$500 K)

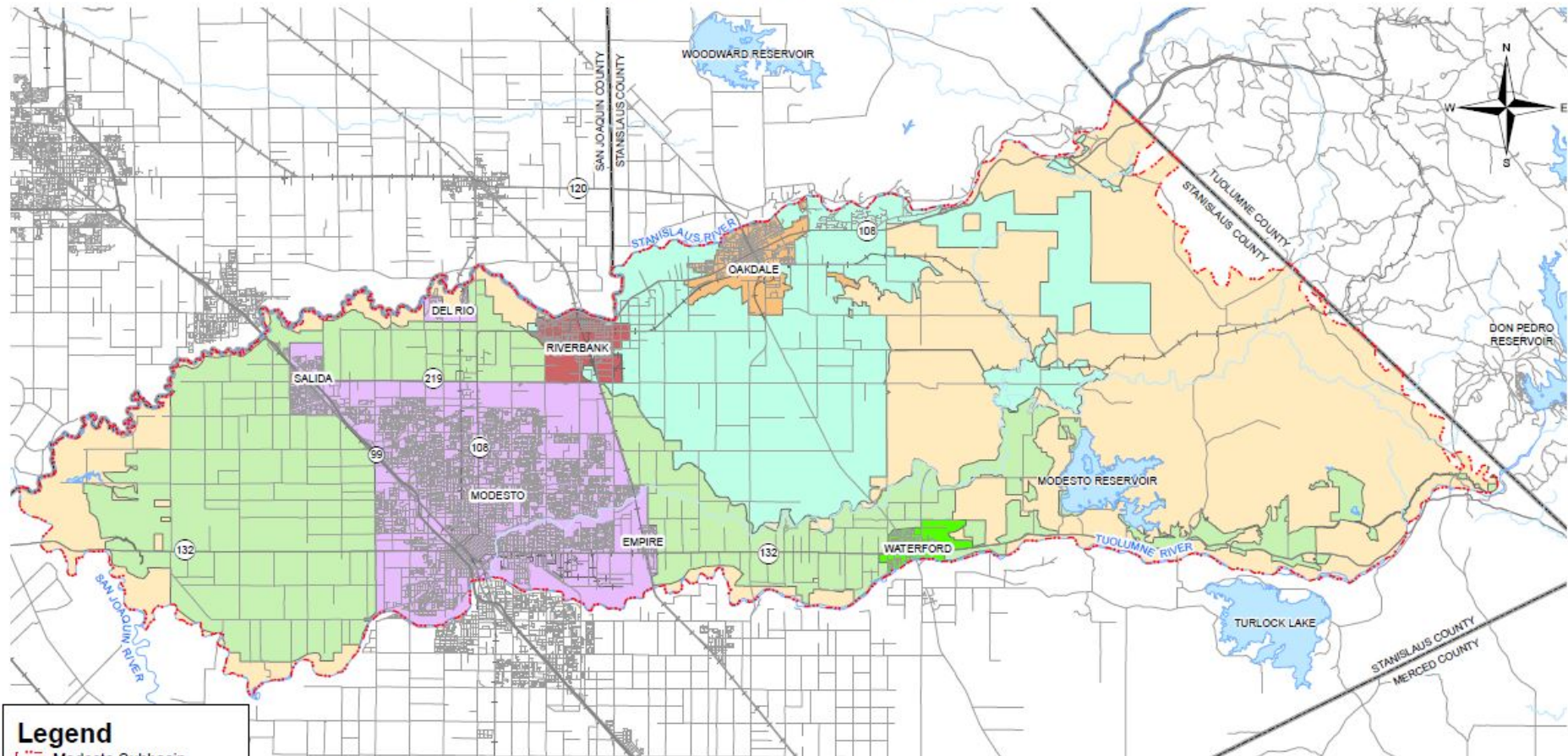
- Evaluation of GSP implementation Funding/Financing Alternatives
- Data Management System for monitoring data transfer & training for GSA members
- Monitoring well installation for saline water saline water migration from the western basin

Schedule

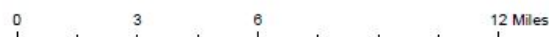
- Prepare Annual Report for 2020 Water Year by April 1, 2021
 - WY 2020 is October 1, 2019 through September 30, 2020
- Collect monitoring data (groundwater usage, water quality and water level)
- Implement grant funded programs/projects

Modesto Groundwater Basin

Modesto Subbasin Agencies



- Legend**
- Modesto Subbasin
 - County Lines
 - Stanislaus County
 - City of Modesto
 - City of Oakdale
 - City of Waterford
 - City of Riverbank
 - Oakdale Irrigation District
 - Modesto Irrigation District



Stanislaus & Tuolumne Rivers Groundwater Basin Association GSA

City of Modesto

City of Oakdale

City of Riverbank

City of Waterford

Oakdale ID

Modesto ID

Stanislaus County

*Tuolumne County**

*Formed separate GSA and “linked”
to STRGBA via separate Cooperation
Agreement with Stanislaus County

Additional Grant Funding Activities (\$1 M)

- Siting and installation of 10 dedicated long-term aquifer observation wells for water level and water quality monitoring purposes
 - In areas where the Corcoran Clay is located (generally west of Highway 99) these wells will be dual completed above and below the CC to head differential and direction/rate of vertical exchange

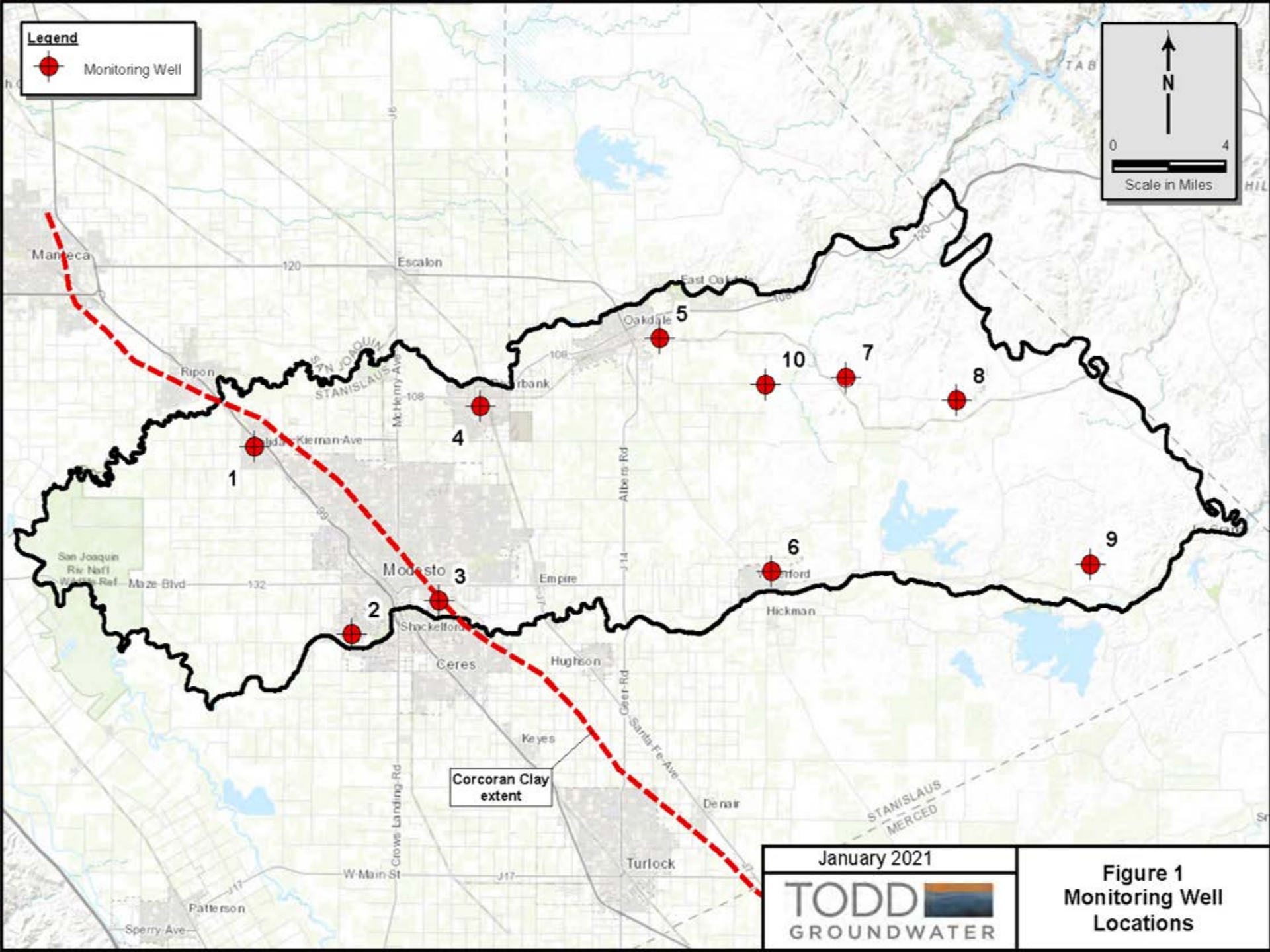
Legend

 Monitoring Well



0 4

Scale in Miles



Corcoran Clay
extent

January 2021

TODD 

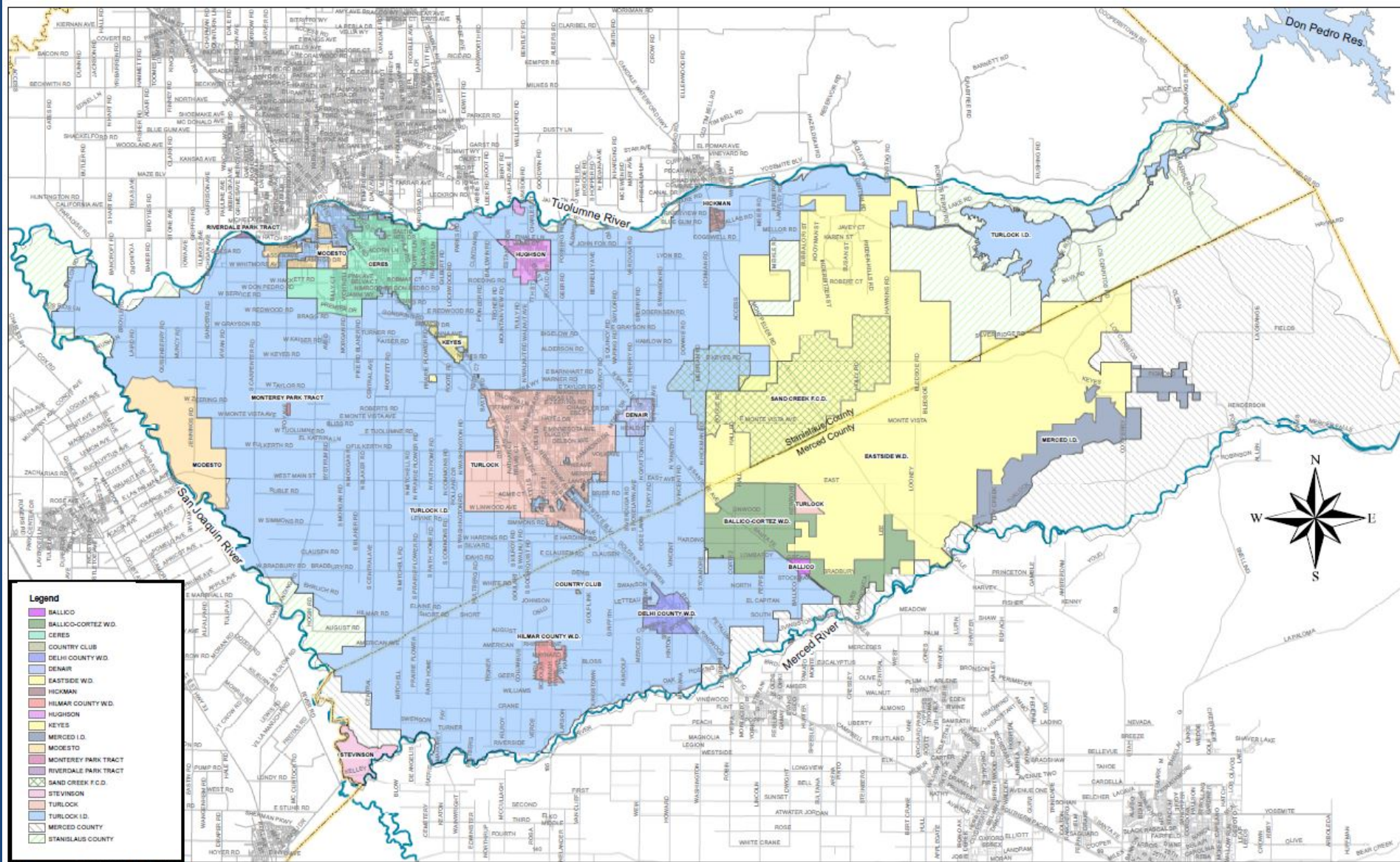
GROUNDWATER

Figure 1
Monitoring Well
Locations

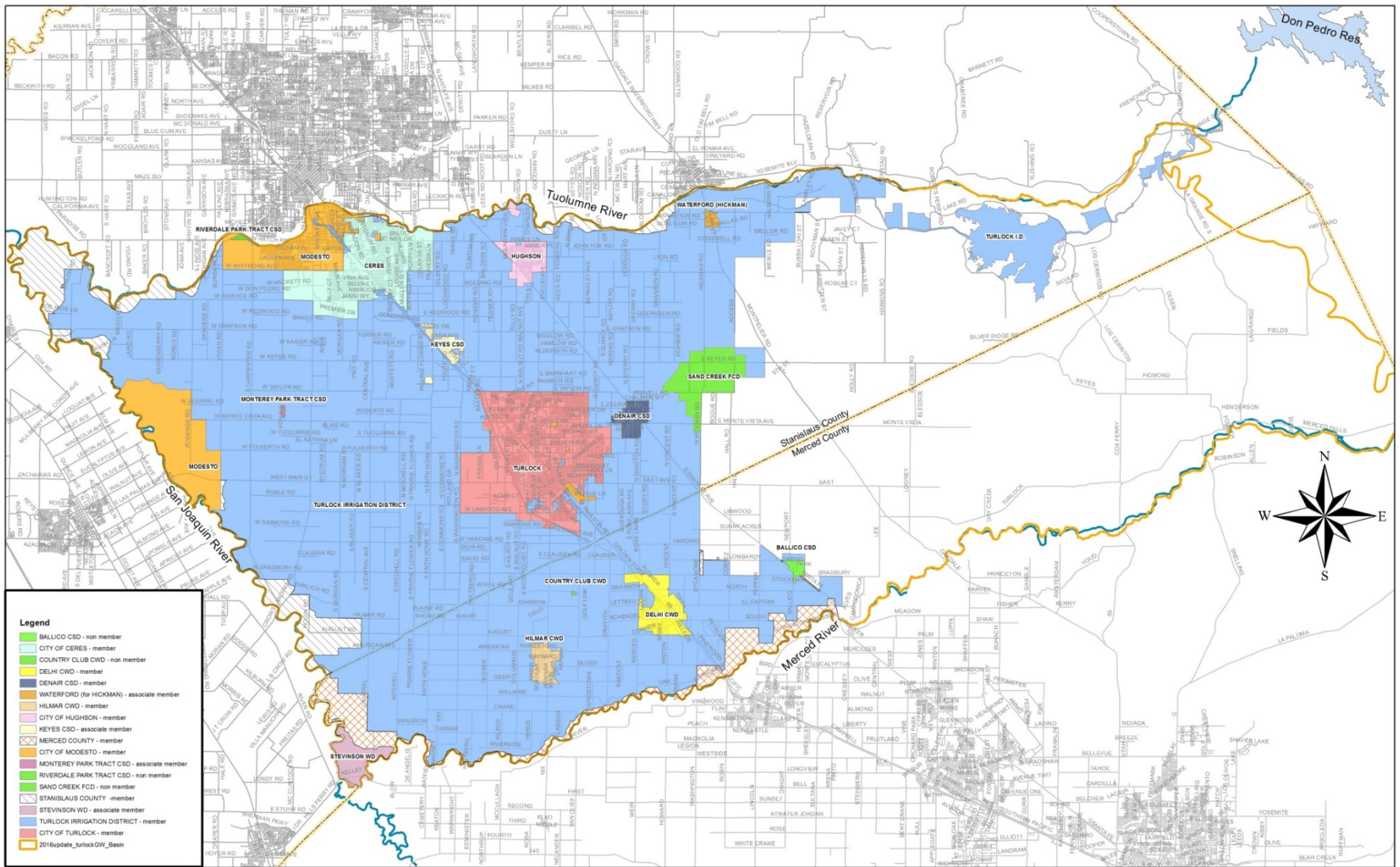
Schedule

- Complete and Approve GSP for submittal to DWR by deadline of January 31, 2022
 - “Bundles” for public review released during the 2021 summer
 - Agency action to adopt the GSP scheduled for late Fall 2021
 - Individual Members must take same action to approve and adopt

Turlock Groundwater Basin



West Turlock Subbasin GSA



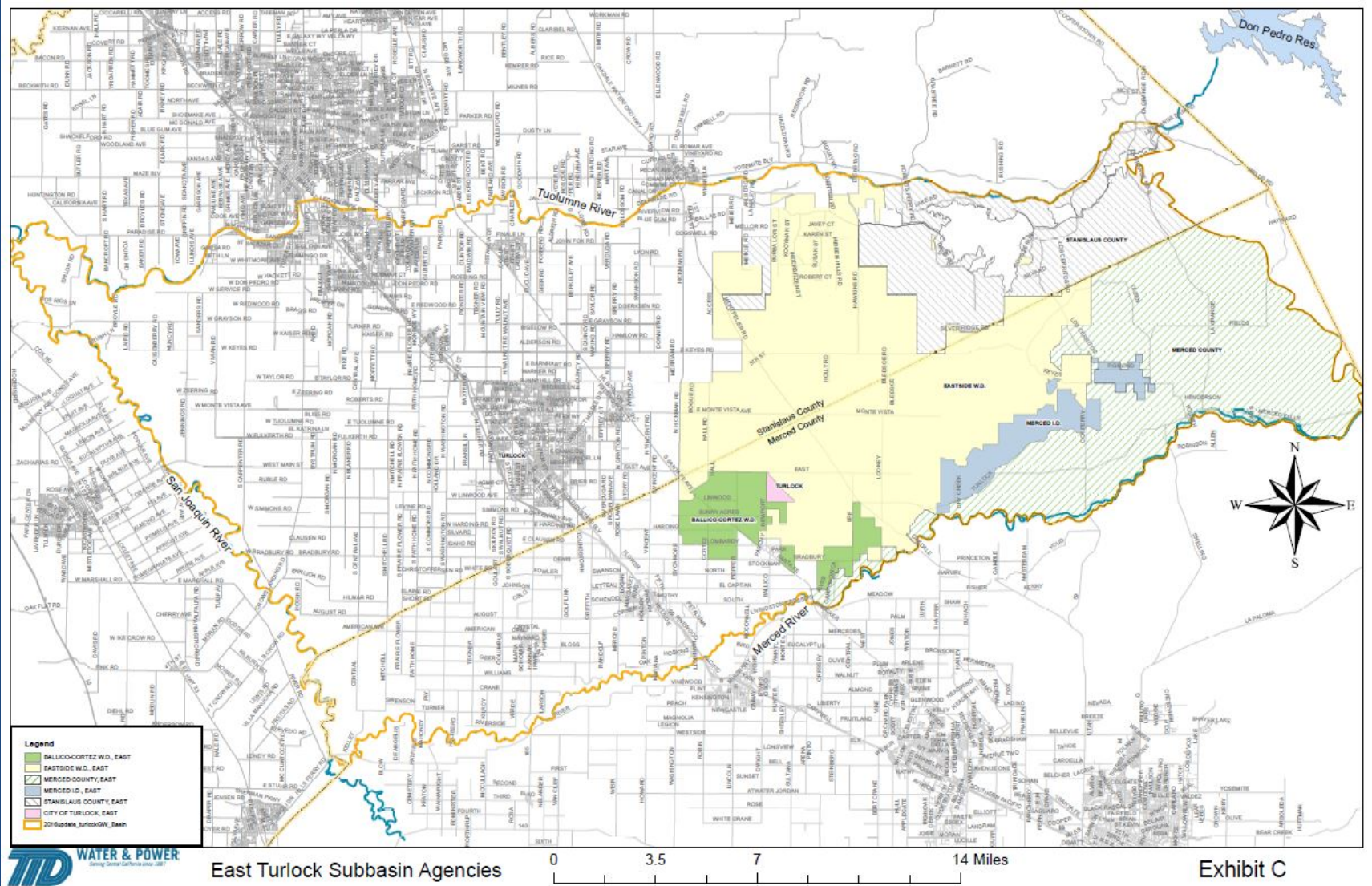
- Legend**
- BALICO CSD - non member
 - CITY OF CERES - member
 - COUNTRY CLUB CWD - non member
 - DELHI CWD - member
 - DENAIR CSD - member
 - WATERFORD (HICKMAN) - associate member
 - HILMAR CWD - member
 - CITY OF HUGHSON - member
 - KEYES CSD - associate member
 - MERCED COUNTY - member
 - CITY OF MODESTO - member
 - MONTEREY PARK TRACT CSD - associate member
 - RIVERDALE PARK TRACT CSD - non member
 - SAND CREEK FCD - non member
 - STANISLAUS COUNTY - member
 - STEVINSON WD - associate member
 - TURLOCK IRRIGATION DISTRICT - member
 - CITY OF TURLOCK - member
 - 2016update_turlockGW_Basin



West Turlock Subbasin GSA

- City of Ceres
 - City of Hughson
 - City of Modesto
 - City of Turlock
 - Denair CSD
 - Associate Members:
 - Keyes CSD
 - City of Waterford
- Turlock Irrigation District
Merced County
Stanislaus County
Delhi County Water District
Hilmar County Water District

East Turlock Subbasin GSA

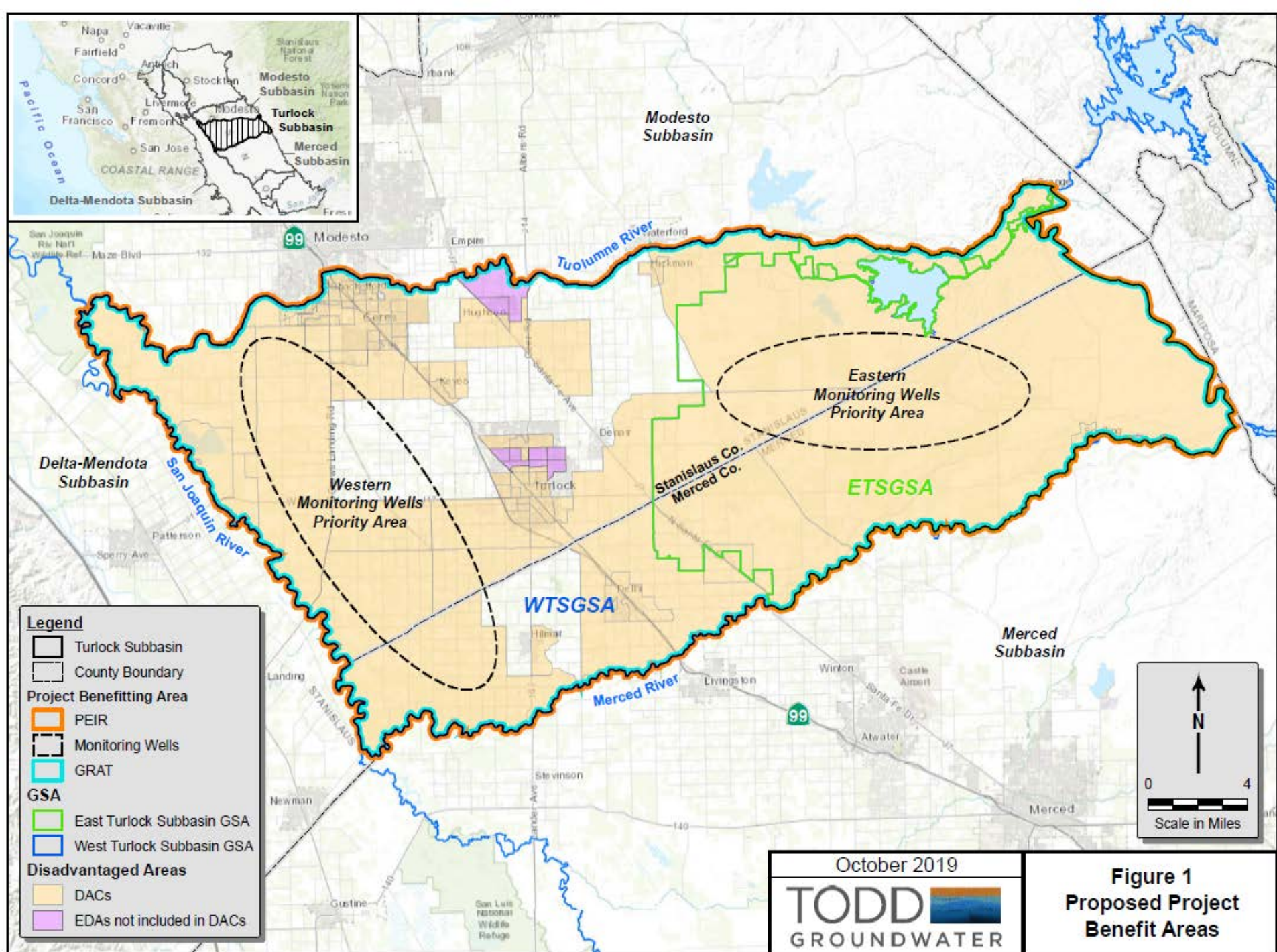


East Turlock Subbasin GSA

- Eastside WD
 - Ballico-Cortez WD
 - Merced Irrigation District
 - Merced County
 - Stanislaus County
 - City of Turlock *
-
- * Associate Member

Additional Grant Funding Activities (\$1 M)

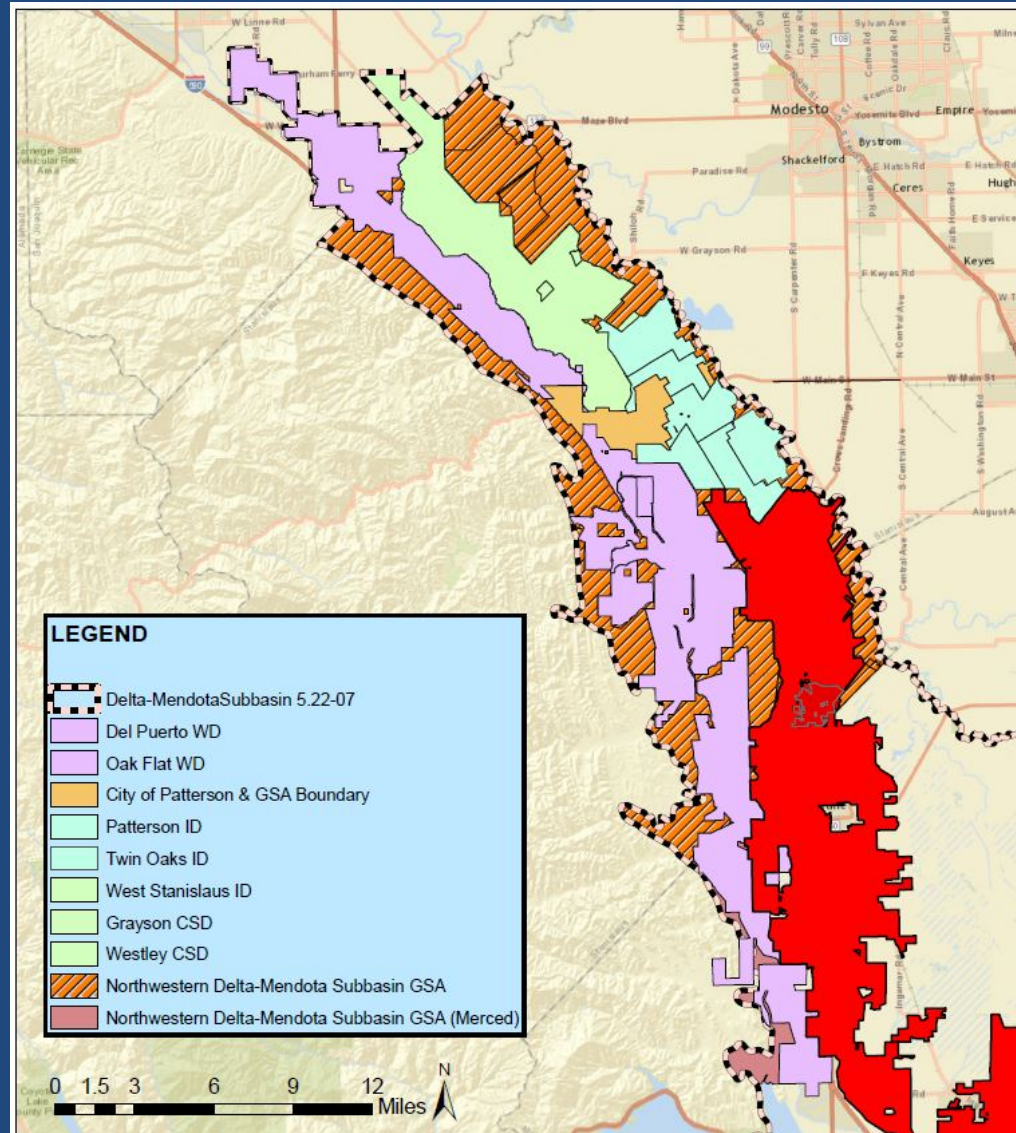
- Monitoring Wells siting and construction
- Groundwater Recharge Assessment Tool (GRAT)
- Programmatic Environmental Impact Report (PEIR) for GSP Management Actions and Projects subject to CEQA



Schedule

- ETS GSA Prop 218 roll-out in early 2021
- Complete and Approve GSP for submittal to DWR by deadline of January 31, 2022
 - “Bundles” for public review released during the 2021 summer
 - Agency action to adopt the GSP scheduled for late Fall 2021
 - Individual Members may take same action to approve and adopt

Delta-Mendota Subbasin –Northern Group



Delta-Mendota Groundwater Basin – Northern Group GSAs

City of Patterson

Del Puerto WD

West Stanislaus ID

Patterson ID

Northwestern Delta-Mendota GSA

Merced & Stanislaus Counties

Additional Grant Funding Activities (\$500 K)

- Well Census and Inventory for the Subbasin
- Land Subsidence Characterization and Project Feasibility Determination

Schedule

- Prepare Annual Report for 2020 Water Year by April 1, 2021
 - WY 2020 is October 1, 2019 through September 30, 2020
- Collect monitoring data (groundwater usage, water quality and water level)
 - Post-GSP Well Permitting Program with GSA concurrence
- Implement grant funded programs/projects

Questions & Discussion

**Rain &
Snow**



Apathy

**The
Hydro-
Illogical
Cycle**



Drought



Panic
&

Concern



Awareness

