



# Regional Surface Water Supply Project

## Stanislaus County Water Advisory Committee

Robert Granberg, P.E., DBIA  
General Manager  
Stanislaus Regional Water Authority

May 26, 2021

# Project Goals

**Quality**

Improve water supply quality

---

**Environmental**

Provide environmental benefits to Tuolumne River aquatic species

---

**Diversify**

Improve supply reliability by diversifying supply portfolio

---

**Sustainable  
GW**

Provide in-lieu aquifer recharge to support groundwater sustainability

---

**System  
Operations**

Increase operational flexibility

# Supports Co-Equal Goals of Water Supply Reliability and Ecosystem Health

- Sustainable Groundwater Management Act (SGMA) compliance
- Groundwater sustainability and replenishment
- Improved habitat for fish and wildlife
- Water supply reliability
- Drought resiliency
- Improved access to safe drinking water

**DROUGHT  
RESILIENT**

# Surface Water Supply Project

**Intake &  
Pump Station**

Connect to existing  
infiltration gallery

**Treatment  
Plant**

New water  
treatment plant

**Transmission  
Mains**

Raw and finished  
water pipelines

**Local  
Facilities**

Reservoir, pump  
station & piping



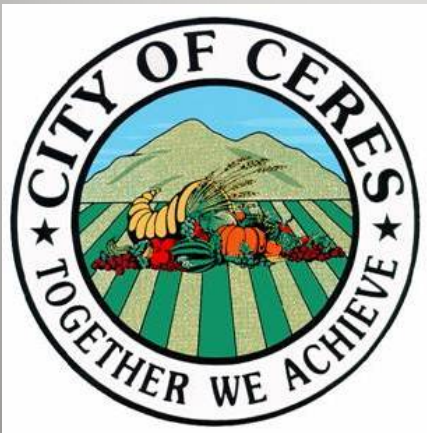
# Project Schedule



PLANNING DESIGN CONSTRUCTION OPERATION

# Project Costs Last Updated in 2019

	Total	Ceres	Turlock	TID
RSWSP only costs, grants included	\$188M	\$67M	\$117M	\$4M



# Project Capital Costs Components

## \$194M RSWSP “Awarded” Project Capital Cost Components and Capacities

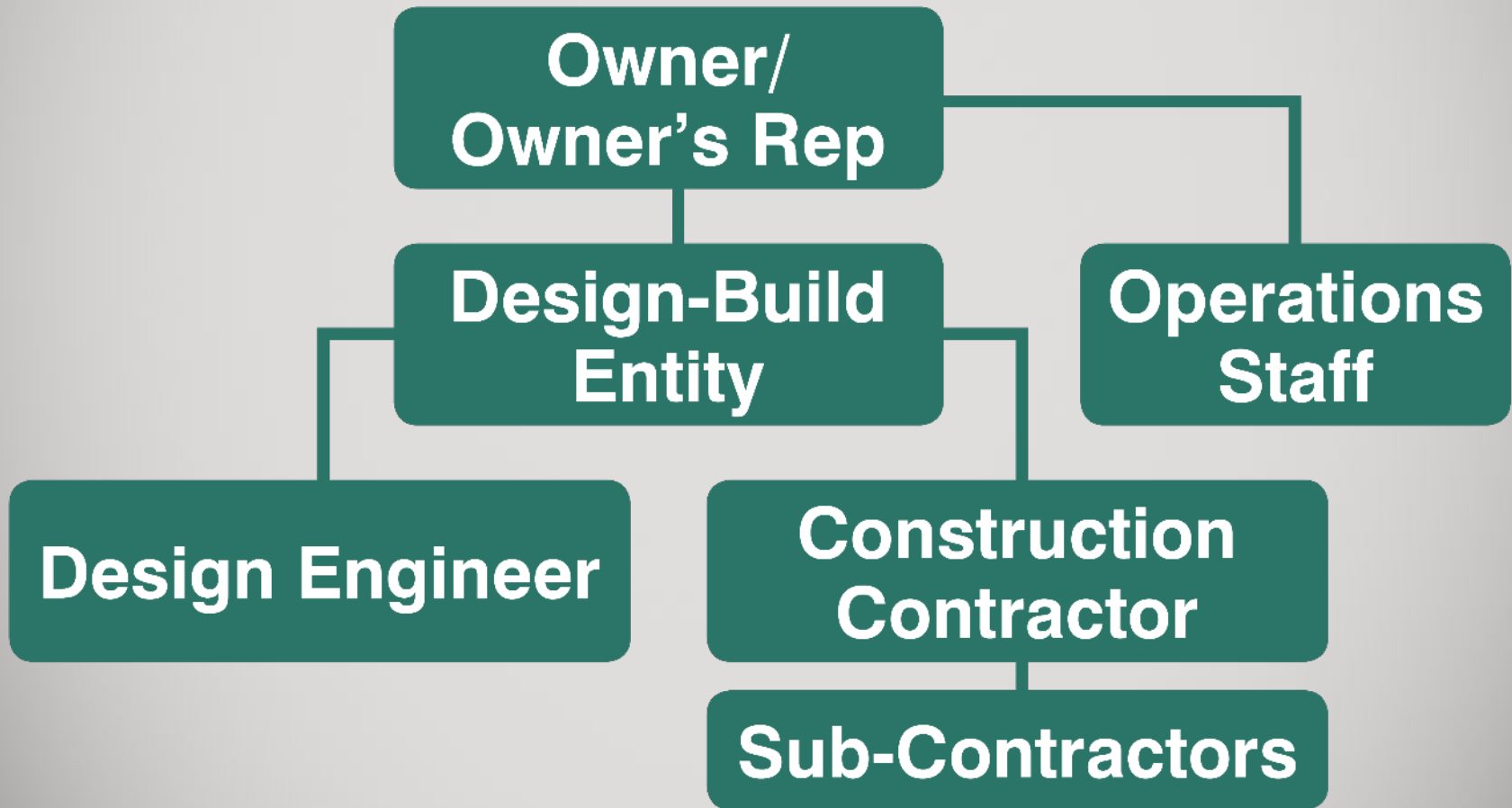
- 15 mgd initial raw water pumping
- 45 mgd raw water transmission main
- 15 mgd Ceres/30 mgd Turlock finished watermains
- 15 mgd Water Treatment Plant Components
  - Flocculation/Sedimentation
  - Intermediate ozone
  - Biological dual media filtration
  - Solids drying basins
- Aldrich Road Bridge Replacement

# Project Cost Reduction Measures

- State Revolving Fund (SRF) Loan Financing Approx. **\$60M** savings over life of loan when compared to municipal bond financing
- Grants totaling **\$35M**
- Design-Build (DB) Project Delivery
  - DB procurement process provides opportunities to drive down capital and O&M costs



# Selected Procurement Method: Lump Sum Design-Build



# Project Elements Included in Design-Build Procurement

- Raw water pump station
- Raw water pipeline
- Water treatment plant
- Aldrich Road Bridge Replacement
- Finished water transmission mains to Turlock and Ceres

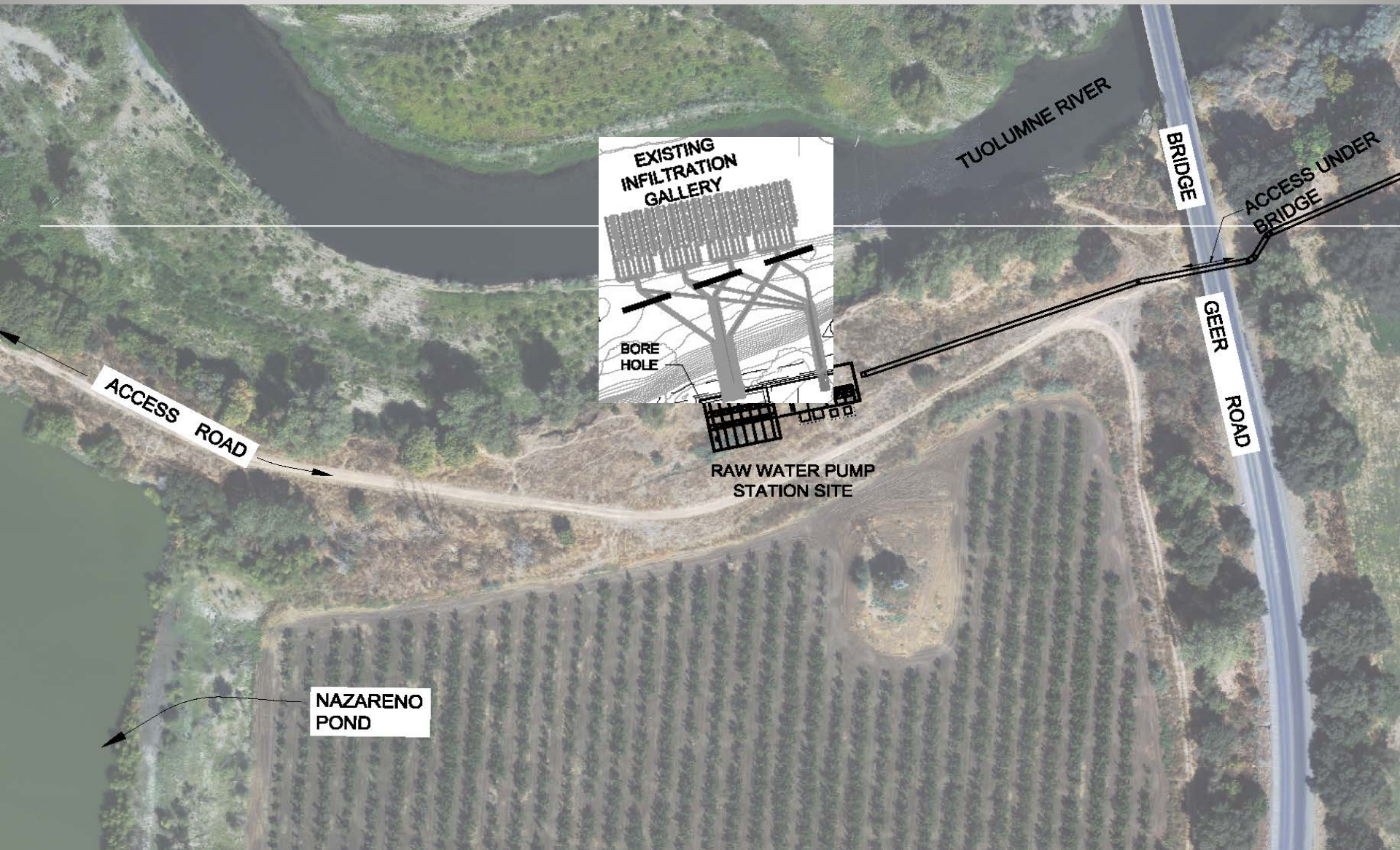


# Project Elements Included in Design-Bid-Build Procurement

- Wet well and infiltration gallery development (completed in 2020)
- City Facilities – reservoirs, distribution system piping, and pump stations (procured by each City)



# Infiltration Gallery and Wet Well



# Excavation and Shoring



# Early Site Preparation for Wet Well



# Borehole Drilling for Soil Stabilization Activities



# Freeze Pipes Around Wet Well Perimeter



12.27.2018 14:55



# Aldrich Road Bridge



# Water Treatment Plant



# Water Treatment Plant



# Water Treatment Plant



# Efforts to Include Additional Regional Partners

- Potential Regional Partners
  - City of Hughson
  - Denair Community Services District
  - Hilmar County Water District
  - Hickman, Delhi, Stanislaus County (not at this time)
- General interest, but hesitant to commit until cost is known
- Draft wholesale water sales agreement in process

# Project Outreach & Education



SRWA PROJECT  
WEBSITE  
([STANRWA.COM](http://STANRWA.COM))



FAQS ADDED TO  
WEBSITE



MONTHLY  
PROJECT  
UPDATES



CONSTRUCTION  
PHOTOS



[STANRWA.COM](http://STANRWA.COM)

**Questions?**



**SRWA**  
STANISLAUS REGIONAL  
WATER AUTHORITY

[www.stanrwa.com](http://www.stanrwa.com)

