



**Modesto Subbasin**  
**Groundwater Use Management Program**  
**Non-District East Action Plan**  
**and Next Steps**



Presented By Christy McKinnon, Water Resources Manager  
Groundwater Resources Division  
Stanislaus County Department of Environmental Resources

# GSP Status

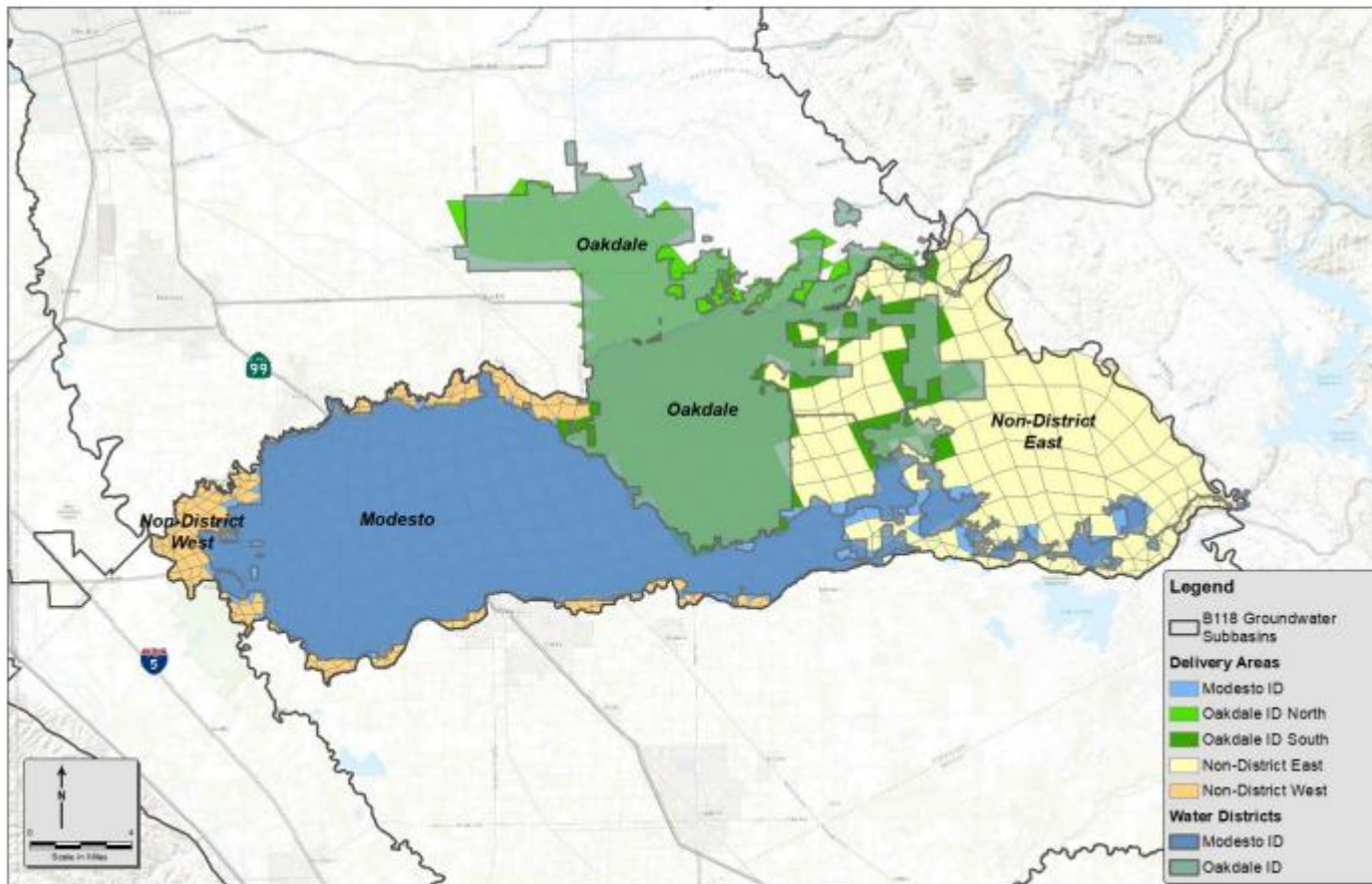
- In 2024 GSP was determined to be incomplete by the Department of Water Resources (DWR)
- The GSP was revised and approved by DWR on 2/27/25
- Included a commitment to develop a **groundwater allocation and demand management program** as a backstop to projects to stop overdraft and raise groundwater levels
  - Developed by January 31, 2026, as promised
  - Implement by January 31, 2027

# Groundwater Use Management Program(GWUMP)

- Approved by County 1/27/2026 and GSA on 1/28/2026
- Equitable subbasin wide approach
- Framework to allocate the sustainable yield to **management areas**
- Allocation is proportional based on the total land area = “overlying area”
  - Simple
  - Accounts for de minimis, municipal users and recovery of developed supply
  - Gives more water to areas that need it the most
  - Respectful of water rights
  - Collaborative resources sharing

# GROUNDWATER ALLOCATION OVERVIEW

## ALLOCATIONS AT THE SUBBASIN-SCALE



### Modesto Subbasin Stewards (GSA Board)

#### Modesto Area

- Modesto Irrigation District
- City of Modesto
- City of Waterford

#### Oakdale Area

- Oakdale Irrigation District
- City of Oakdale

#### Non-District West

- Stanislaus County
- City of Riverbank

#### Non-District East

- Stanislaus County

# GWUMP Next Steps - NDE

- County “steward” to develop an Action Plan for the Non-District East
  - Significant overdraft and declining water levels
  - 48,900 AFY with long term developed water re- distribution
  - Allocation is 45% of historical with collaborative approach
- How to initiate reductions, achieve targets and meet timelines

# GWUMP Next Steps - NDE

- BOS directed DER to hire 3<sup>rd</sup> party consultant to review GWUMP and EKI technical studies and provide a recommendation
- Recommendations can be incorporated into Action Plan and future GWUMP refinements
- Supervisor Withrow and B. Condit appointed to lead and coordinate

# GWUMP Next Steps - NDW

- NDW County “white” areas and City of Riverbank areas are managed separately
- Water levels are relatively stable in other management areas and do not require action plans.
- NDW, OID and MID management areas will continue to monitor, report and collaborate with GSA member agencies

# NDE Action Plan Next Steps

- Request for Proposal issued March 23
- Ad hoc workgroup to begin late April 2026
- DER will obtain Board direction for future policy decisions, and Action Plan Approval
- Obtain GSA approval by November 1, 2026
- Action Plan to be implemented January 31, 2027
- STRGBA GSA will provide basin wide oversight

**Questions?**