

STANISLAUS COUNTY WATER ADVISORY COMMITTEE

**East Turlock Subbasin GSA Update:
Demand Reduction Outcomes, Groundwater
Use Fee Status and Plans for Fiscal Year 2026**

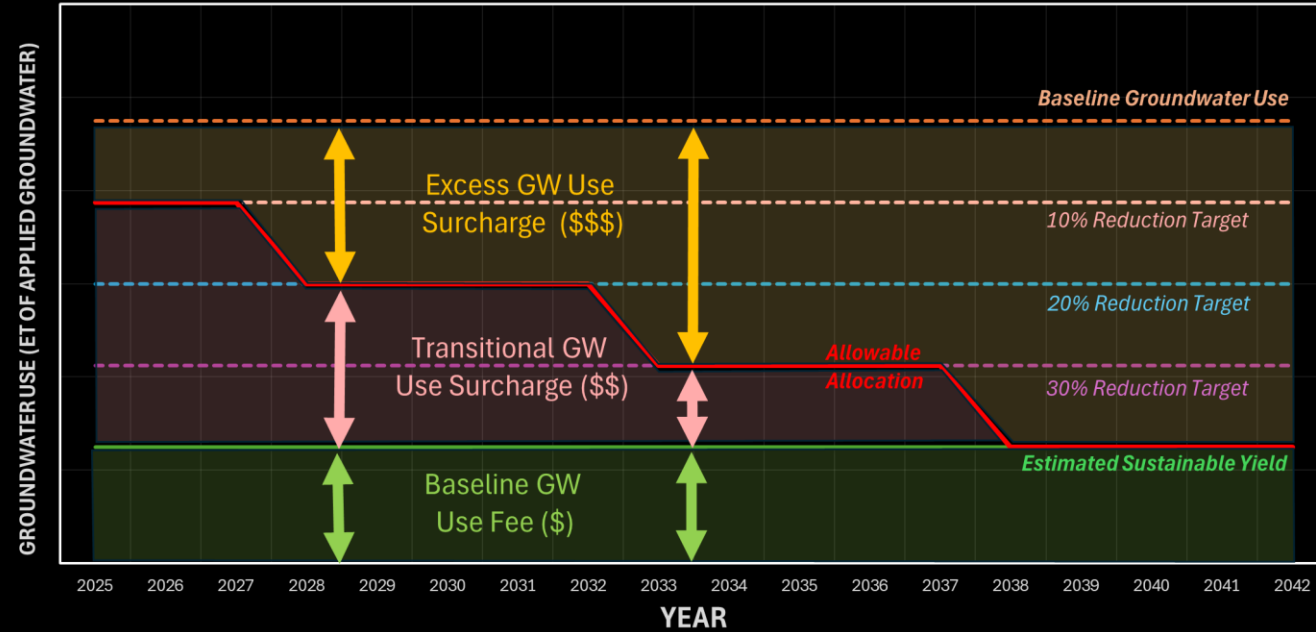
March 25, 2026



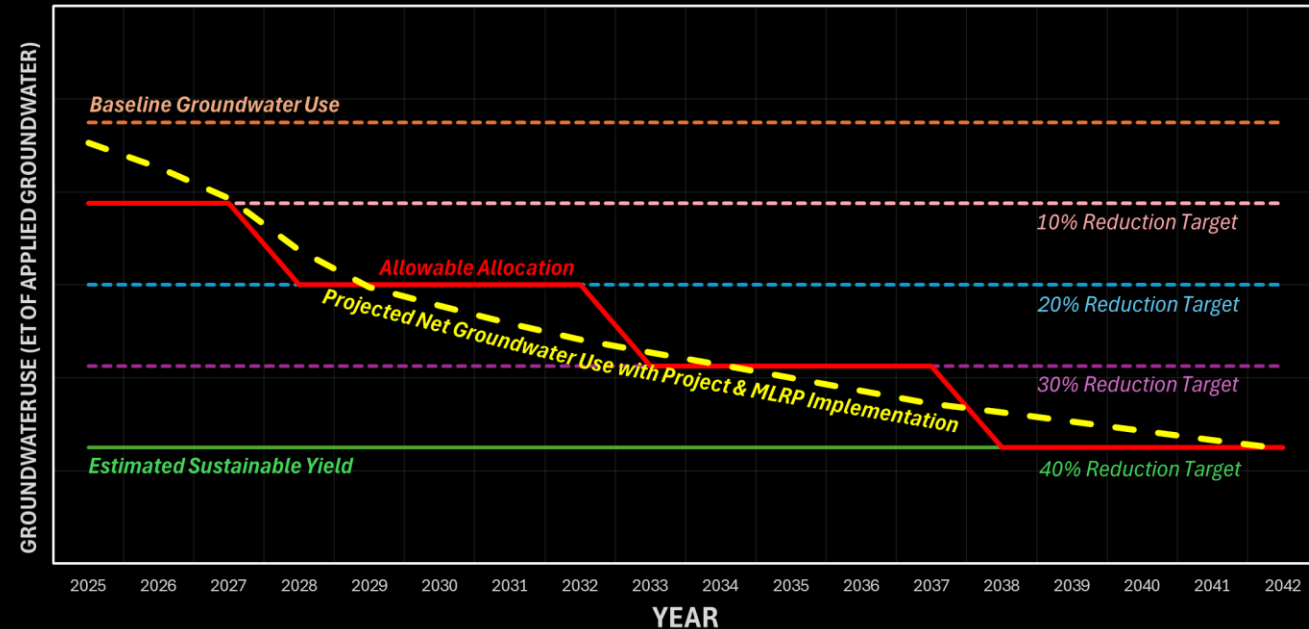
Groundwater Management Framework

- Phase in groundwater use reduction and groundwater use fees starting 2025
- Decrease allocations in 10% steps
- Fees will fund P&MAs
- Projected demand reduction from P&MAs aligns with allocations
- 21,000 acres are eventually planned to be repurposed or rotationally fallowed

GROUNDWATER USE FEE FRAMEWORK



GROUNDWATER USE REDUCTION FRAMEWORK AND PROJECTIONS



Geography Statistics

2025 ▾

UNITS

ac-ft/ac

ac-ft

Data last updated through 10/31/2025

TOTAL SUPPLY

165,796.60

ac-ft

TOTAL USAGE

146,914.42

ac-ft

BALANCE

18,882.18

ac-ft

ACRES MANAGED

103,622.86

ac-ft

2025 ▾

UNITS

ac-ft/ac

ac-ft

Data last updated through 10/31/2025

TOTAL SUPPLY

1.60

ac-ft/ac

TOTAL USAGE

1.42

ac-ft/ac

BALANCE

0.18

ac-ft/ac

ACRES MANAGED

103,622.86

ac-ft

East Turlock Subbasin Groundwater Sustainability Agency Groundwater Accounting Outcome for the 2025 Reporting Period

Groundwater Accounting Component	Consumptive GW Use from ET data (acre-ft)	Groundwater Extraction (acre-ft) ¹
Groundwater Sustainability Plan Demand Reduction Plan Totals		
Baseline Irrigated Parcel Acres - 94,890 acres ²		
Average Baseline Groundwater Use during Baseline Period (2012 - 2021) ³	171,170	211,321
Reporting Period (RP) 2025 Groundwater Use Reduction Target ⁴	(17,117)	(21,132)
RP 2025 Total Groundwater Use Target (90%)	154,053	190,189

East Turlock Subbasin Groundwater Sustainability Agency

Groundwater Accounting Outcome for the 2025 Reporting Period

Groundwater Accounting Component	Consumptive GW Use from ET data (acre-ft)	Groundwater Extraction (acre-ft) ¹
Reporting Period 2025 Groundwater Use Outcomes in the Groundwater Accounting Platform		
Actual Irrigated Parcel Acres Managed - 103,623 acres ⁵		
Category 0, 1 and 2 Groundwater Allocations for Irrigated Parcels RP 2025 ⁶	165,797	204,688
RP 2025 Groundwater Use (Adjusted for self-reported fallowing, cover cropping and consumed surface water)	146,914	181,375
RP 2025 Groundwater Use Reduction Achieved compared to long-term average demand (below Average Baseline Groundwater Use, does not fully account for irrigation demand reduction from unreported fallow fields) ⁷	(24,256)	(29,946)

East Turlock Subbasin Groundwater Sustainability Agency

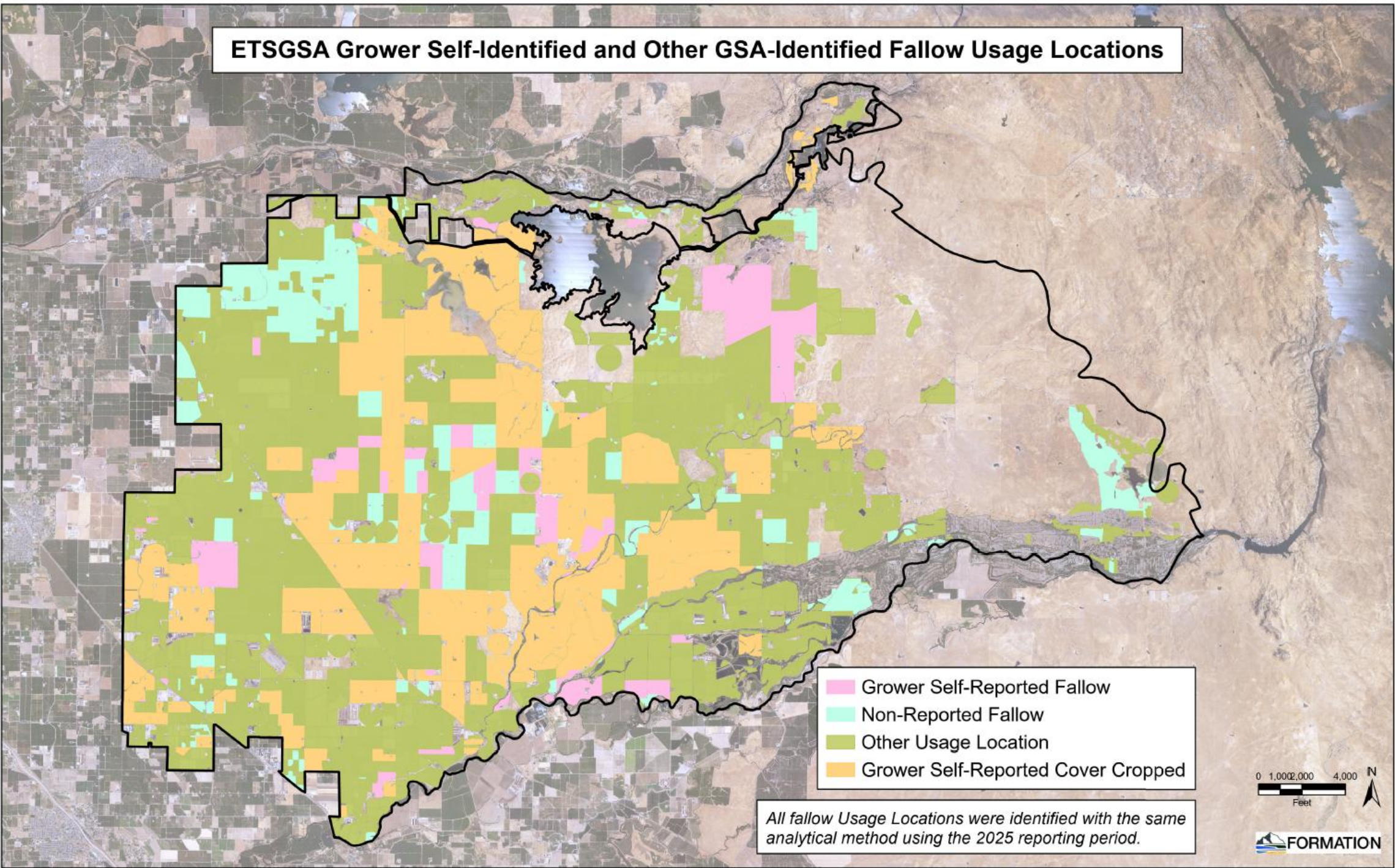
Groundwater Accounting Outcome for the 2025 Reporting Period

Groundwater Accounting Component	Consumptive GW Use from ET data (acre-ft)	Groundwater Extraction (acre-ft) ¹
Reporting Period 2025 Demand Reduction Project and Management Action Outcomes		
Self-Reported Fallowing - 5,586 acres ⁸	(11,731)	(14,482)
Additional Fallowing Identified from Land IQ Data - 4,876 acres above long-term baseline fallowing rate ^{8,9}	(10,240)	(12,641)
Cover Cropping - 26,163 acres ¹⁰	(3,820)	(4,716)
In-Lieu Recharge from Replenishment Water ¹¹	(4,790)	(5,657)
In-Lieu Recharge from MID Transfer Water ¹²	(1,618)	(1,794)
Total Demand Reduction from Projects and Management Actions¹³	(32,197)	(39,290)

2025 GROUNDWATER USE FEE OUTCOME

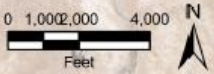
P&MA Revenue Category	P&MA Budget Revenue Item	RP 2025 (Estimated)	RP 2025 (Outcome)
Groundwater Use Fees for Amounts within Allocation	Category 1 Deposits	\$3,005,525	\$2,381,673
	Category 1 Credits/Refunds Due	\$0	(\$342,467)
	Category 1 True-Up Payments Due	\$0	\$468,173
	Category 2 True-Up Payments Due	\$6,791,890	\$3,861,123
Groundwater Use Fees for Amounts Exceeding Allocations	Category 3 Payments	\$0	\$3,120,779
TOTAL ESTIMATED GROUNDWATER USE FEE REVENUE		\$9,797,415	\$9,489,282

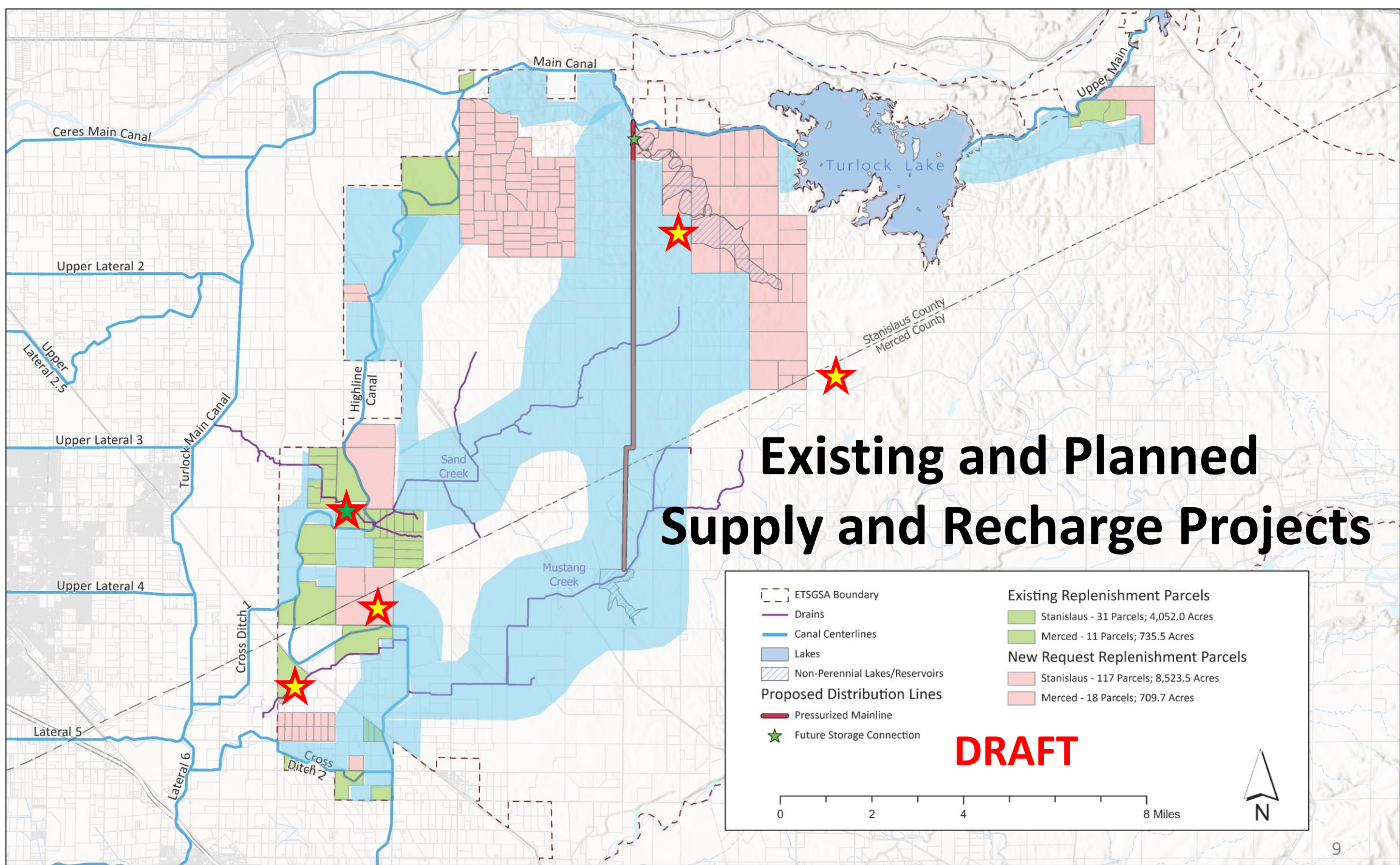
ETSGSA Grower Self-Identified and Other GSA-Identified Fallow Usage Locations



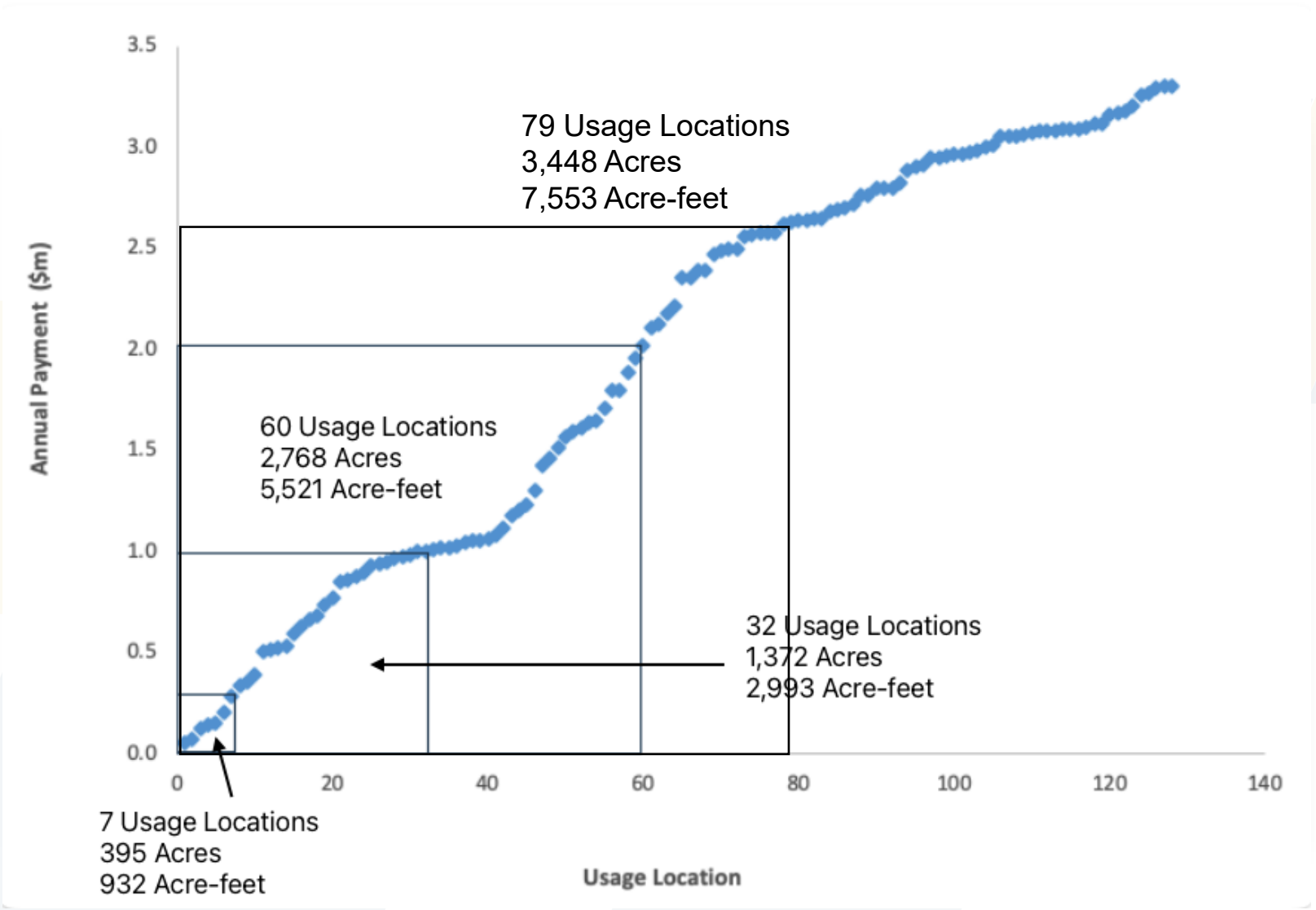
- Grower Self-Reported Fallow
- Non-Reported Fallow
- Other Usage Location
- Grower Self-Reported Cover Cropped

All fallow Usage Locations were identified with the same analytical method using the 2025 reporting period.





INCENTIVIZED FOLLOWING PROGRAM INVESTMENT SCENARIOS CONSIDERED

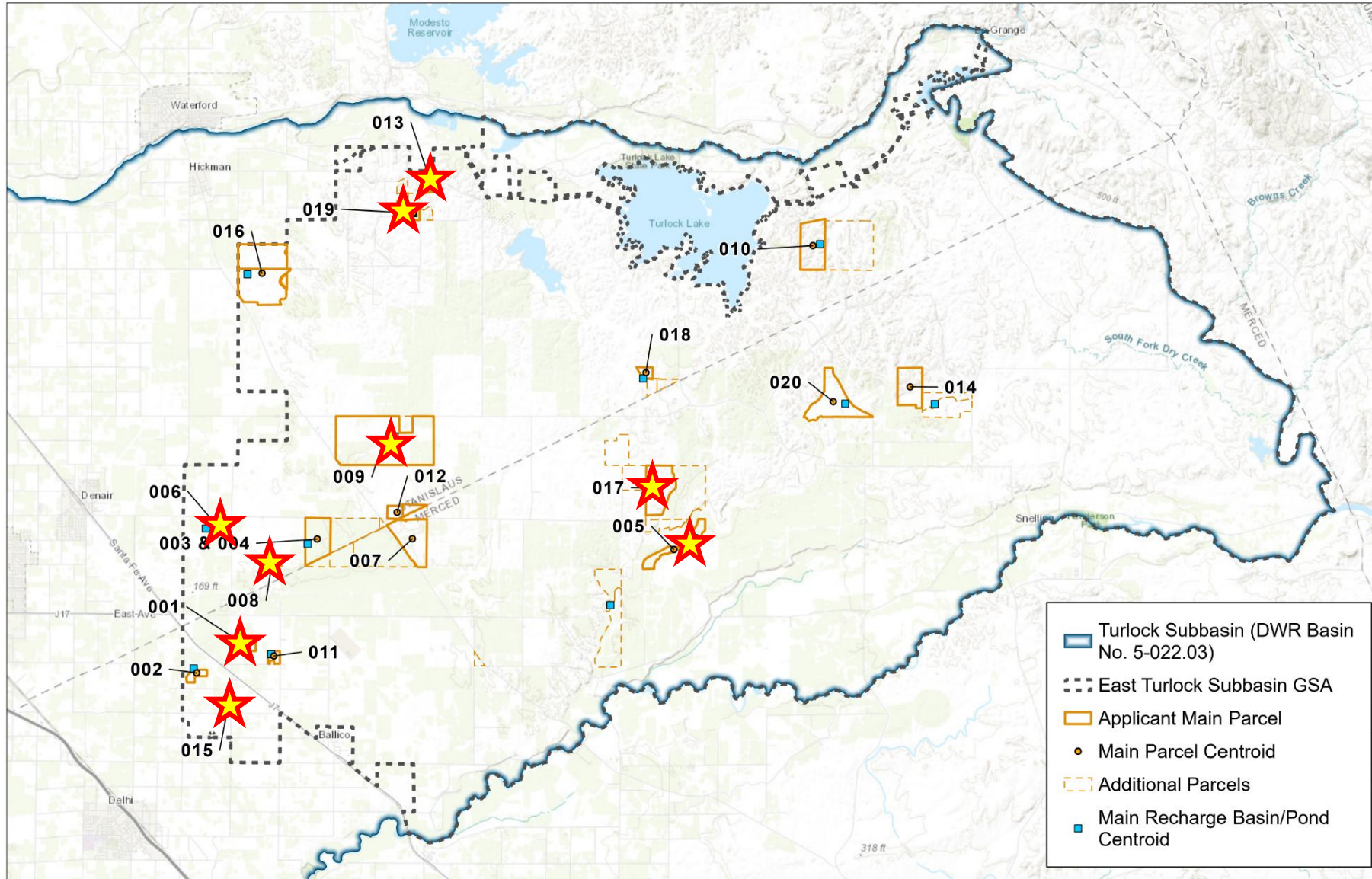


SUMMARY OF 20 MLRP APPLICATIONS RECEIVED

MLRP Project Types Proposed	Quantity
Extended Multibenefit Fallowing	~750 acres
Stormwater Ponds	~100 acres
Constructed Basins	~230 acres
Orchard Swale Rewilding	~110 acres
Floodplain Reconnection	~20 acres
Floodflow Spreading	~40 acres

Total Score	GW Sustainability Relative Score	Ecological and Hydrologic Benefits Relative Score	Community and Economic Benefits Relative Score	Feasibility and Replicability Relative Score
56	78%	13%	40%	70%
55	56%	75%	50%	33%
49.5	67%	25%	13%	80%
49	56%	50%	38%	43%
48	56%	75%	25%	20%
47.5	56%	63%	20%	40%
46.5	56%	63%	30%	20%
45.5	67%	13%	35%	40%
45	56%	50%	30%	27%
45	56%	38%	13%	67%
43.5	50%	25%	13%	90%
39.5	22%	38%	43%	90%
37	33%	13%	23%	100%
36	0%	63%	50%	90%
34.5	22%	25%	23%	100%
34	50%	38%	8%	17%
32	22%	13%	23%	100%
32	11%	38%	35%	83%
31.5	22%	13%	20%	100%
30.5	22%	13%	23%	90%
30.5	0%	50%	28%	100%
27	28%	25%	23%	33%
27	6%	38%	38%	63%
26	11%	63%	28%	20%
25.5	0%	38%	23%	90%
25	6%	63%	30%	27%
24	6%	63%	23%	30%
21	6%	38%	30%	33%
20.5	6%	63%	20%	10%

LOCATION OF MLRP PROJECTS RECOMMENDED



ETSGSA GROUNDWATER TRENDS

