

Stanislaus County Water Advisory Committee

Stanislaus East Mutual Water Company

February 22, 2023

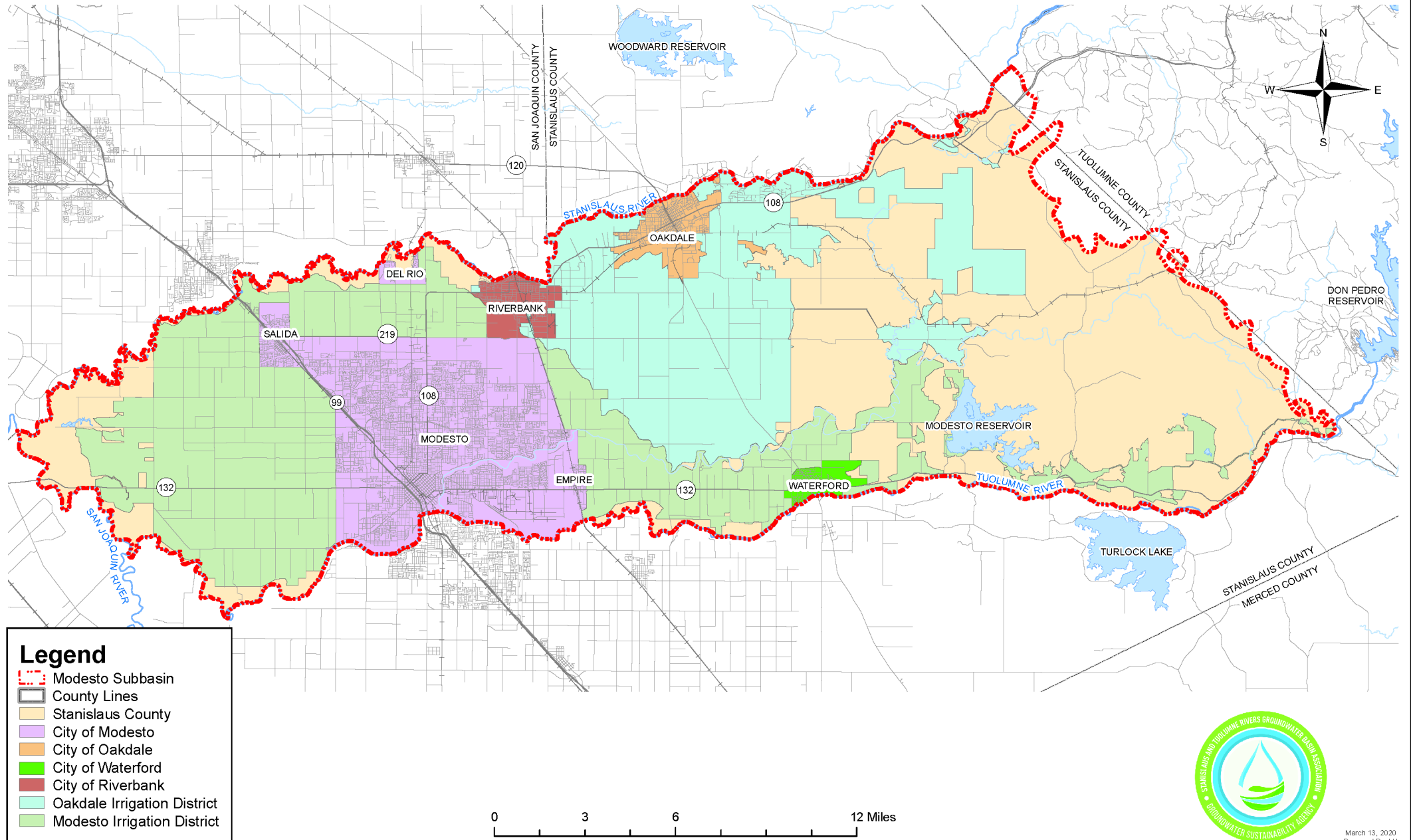
Stanislaus East Mutual Water Company

CA Mutual Benefit Corporation

Formed November 2022

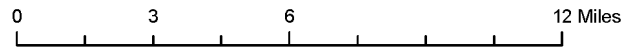
Approximately 17,000 Gross Acres

Modesto Subbasin Agencies



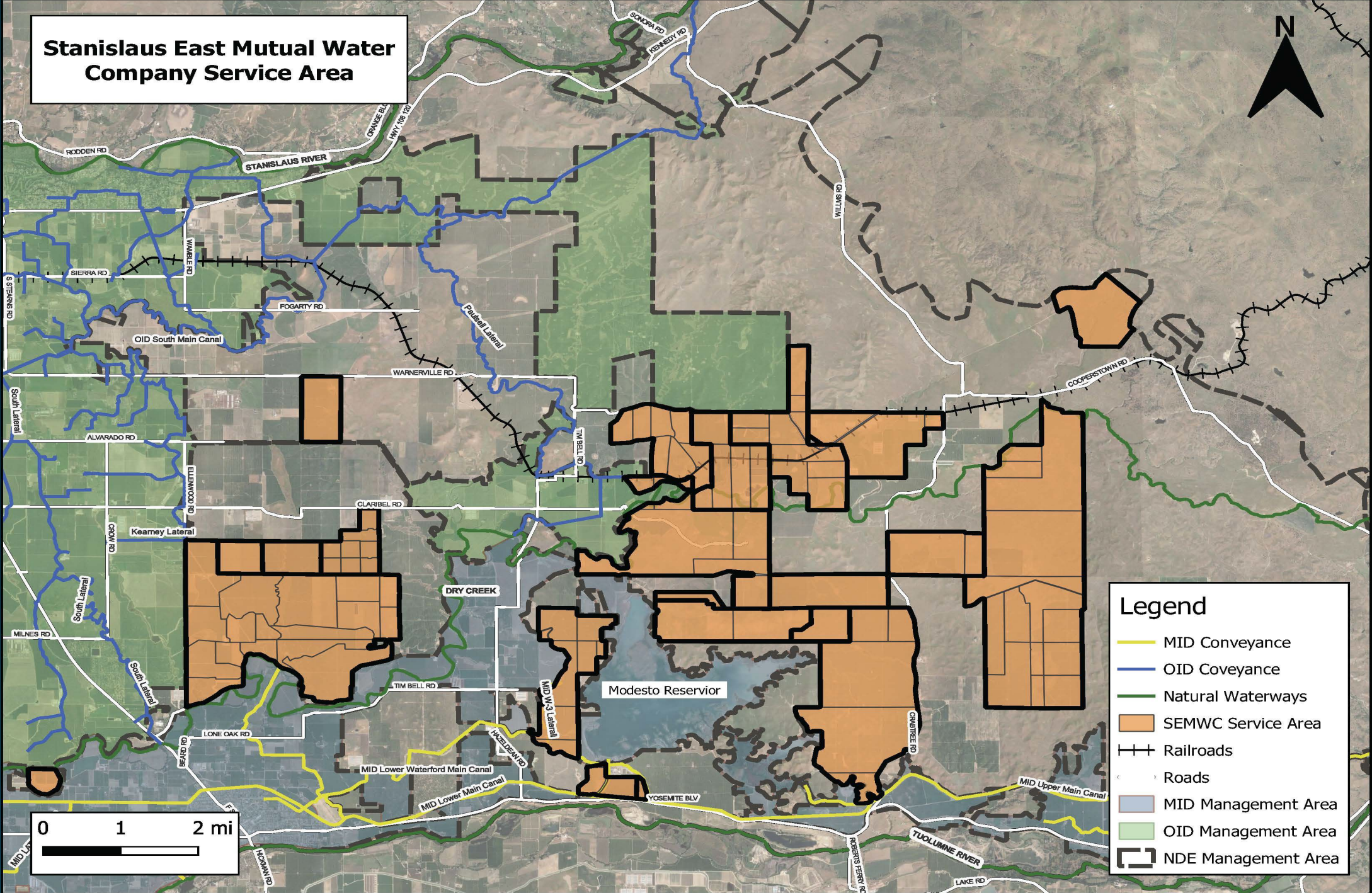
Legend

- Modesto Subbasin
- County Lines
- Stanislaus County
- City of Modesto
- City of Oakdale
- City of Waterford
- City of Riverbank
- Oakdale Irrigation District
- Modesto Irrigation District



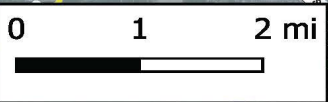
March 13, 2020
Prepared By: LH

Stanislaus East Mutual Water Company Service Area



Legend

- MID Conveyance
- OID Conveyance
- Natural Waterways
- SEMWC Service Area
- Railroads
- Roads
- MID Management Area
- OID Management Area
- NDE Management Area



Stanislaus
East
Mutual
Water
Company

5 Member Board of Directors

Monthly Meetings

Staff Support

General Manager, Engineering
Team & Legal Counsel

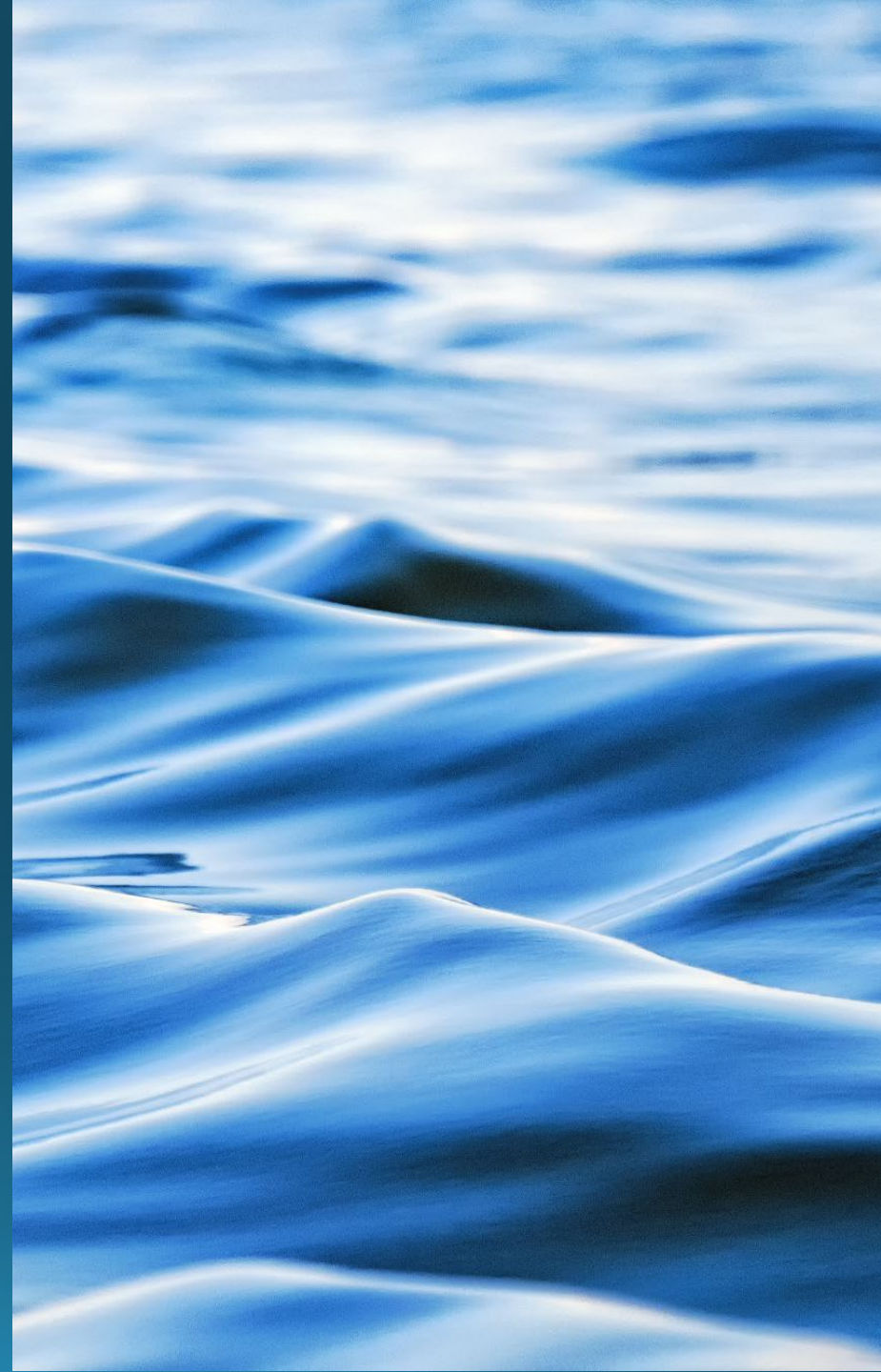
Stanislaus East Mutual Water Company

Eligible for Grant Funding

One Collective Voice

Contract for Surface Water Supply

Representation at Agency Meetings



Stanislaus East Mutual Water Company

Membership is Open to Landowners in the
Non-District East Area

Members Assessed by Irrigated Acreage

Questions

Julia Stornetta

General Manager

Stanislaus East Mutual Water Company

stornettagroup@gmail.com