

# Status Update Regarding Compliance with the Sustainable Groundwater Management Act (SGMA) in Stanislaus County

# Sustainable Groundwater Management Act (2014)

- Investigate and determine the Basin’s Sustainable Yield
  - “Sustainable Management Criteria” including the determination of local appropriate Minimum Thresholds and Measurable Objectives standards used to avoid Undesirable Results in 6 Resource Areas:
    - Sea Water Intrusion
    - Land Subsidence
    - Water Quality Degradation
    - Intercepted Surface Water
    - Chronic Lowering of Water Levels
    - Significant Reduction of Storage
- Implement Management Actions and Projects to achieve and maintain sustainability as defined in the adopted GSP
- Collect pertinent groundwater monitoring information to demonstrate sustainability and GSP implementation

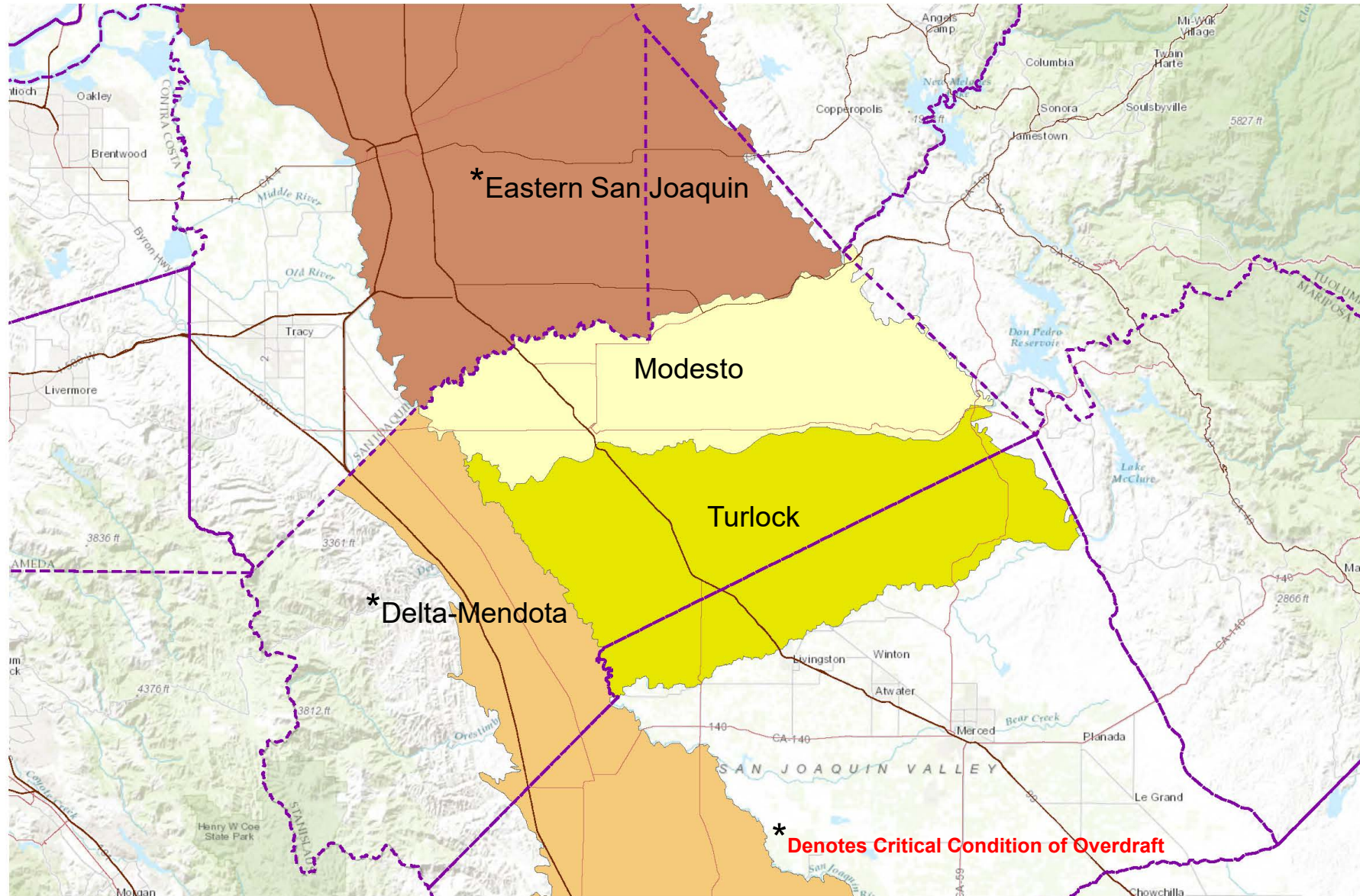
Modesto & Turlock Subbasins are classified as High Priority and not in a condition of critical overdraft



Most subbasins in the San Joaquin Valley are classified as being in a condition of Critical Overdraft



# Stanislaus County Groundwater Basins



# Summary of GSA Formation and GSP Preparation

## Delta-Mendota Subbasin (**January 2020**)

Multiple-GSAs/Multiple GSPs

*Northwestern Delta-Mendota GSA (MOU)*

## Turlock Subbasin (**January 2022**)

2 GSAs/1 GSP

*East Turlock & West Turlock GSA (JPAs)*

## Modesto Subbasin (**January 2022**)

2 GSAs/1 GSP

*Stanislaus & Tuolumne Rivers Groundwater Basin Association GSA (MOU)*

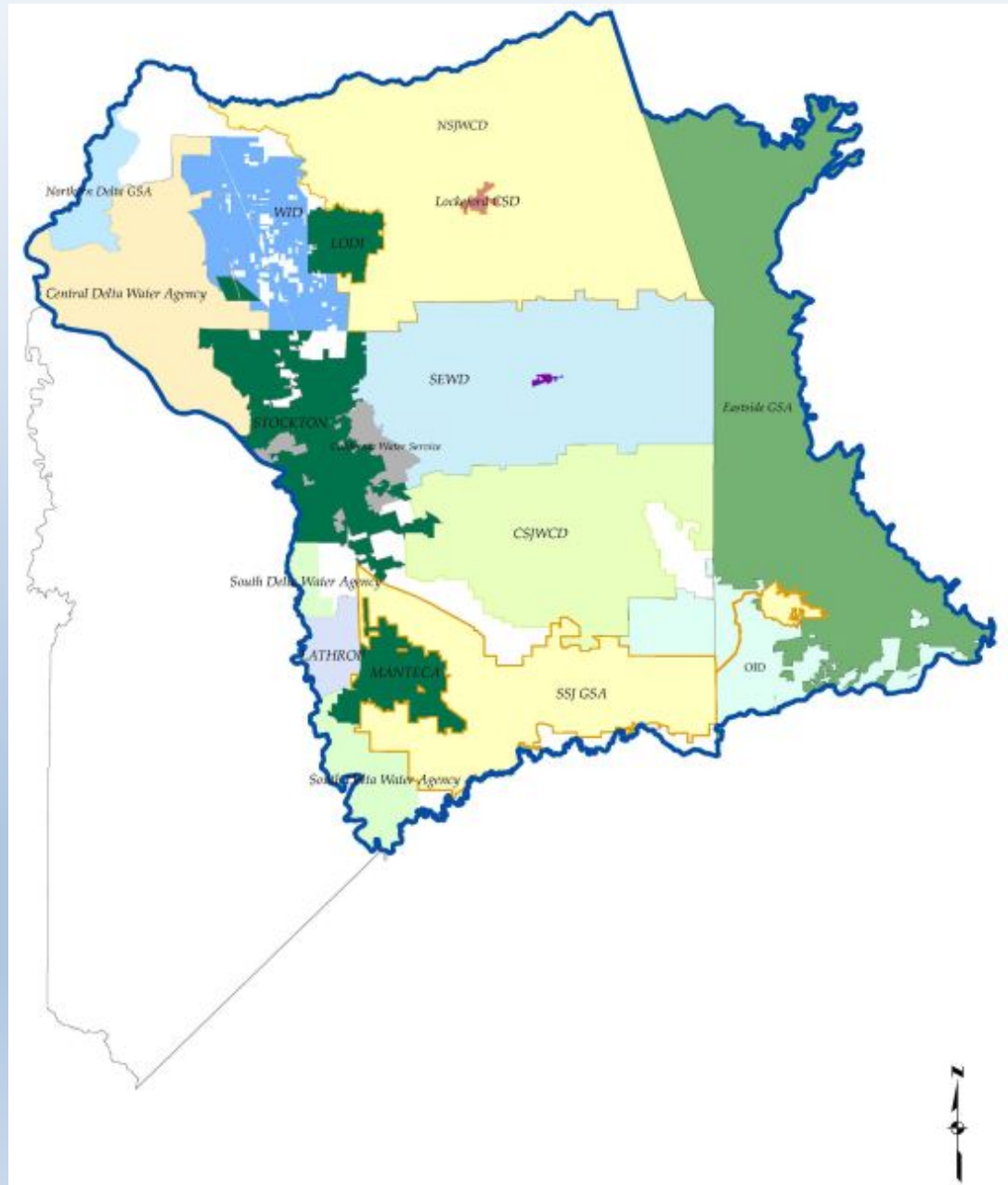
*Tuolumne County GSA*

## Eastern San Joaquin Subbasin (**January 2020**)

Multiple-GSAs/1 GSP

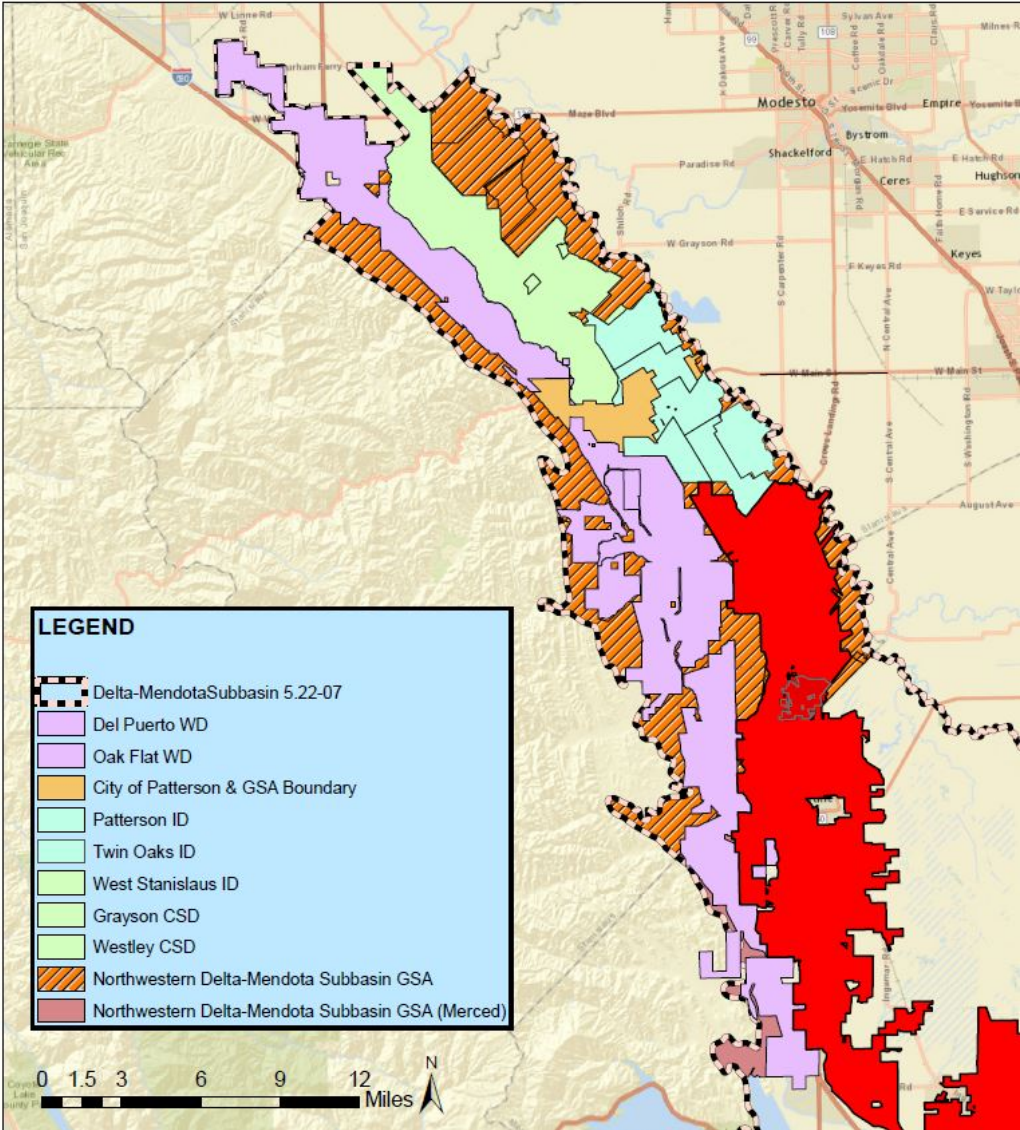
*Eastside San Joaquin GSA (MOU)*

# Eastern San Joaquin Groundwater Basin





# Delta-Mendota Subbasin –Northern Group

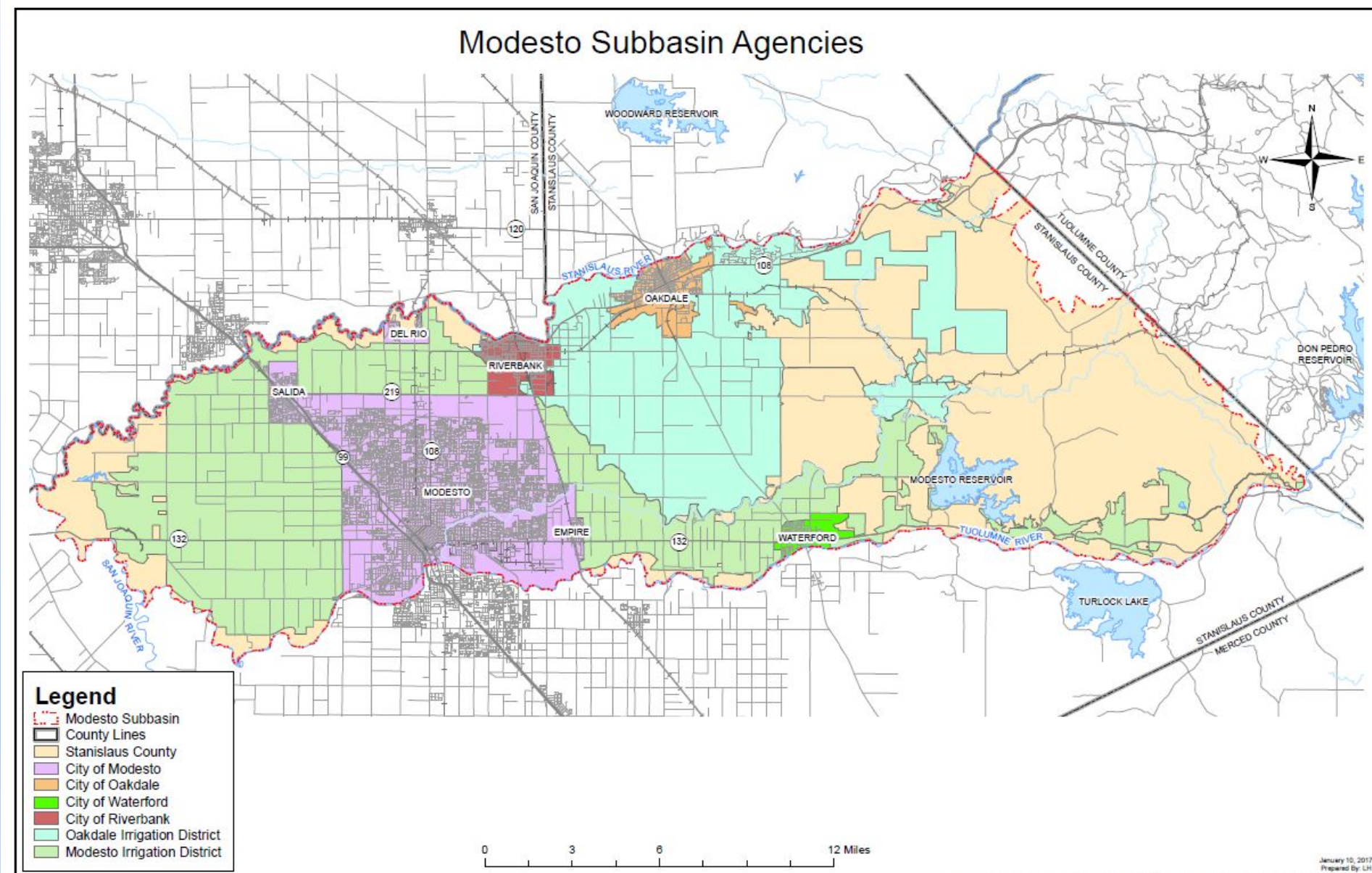


# Eastern San Joaquin GSP and Northern & Central Delta-Mendota Region GSP Implementation Schedule

- Prepared Annual Report for 2020 Water Year by April 1, 2021
  - WY 2020 is October 1, 2019 through September 30, 2020
- Collected monitoring data (groundwater usage, water quality and water level)
  - Developed post-GSP Well Permitting Program with GSA concurrence
- Implement grant funded programs/projects (subsidence, well inventory, alternative funding mechanisms, model update)



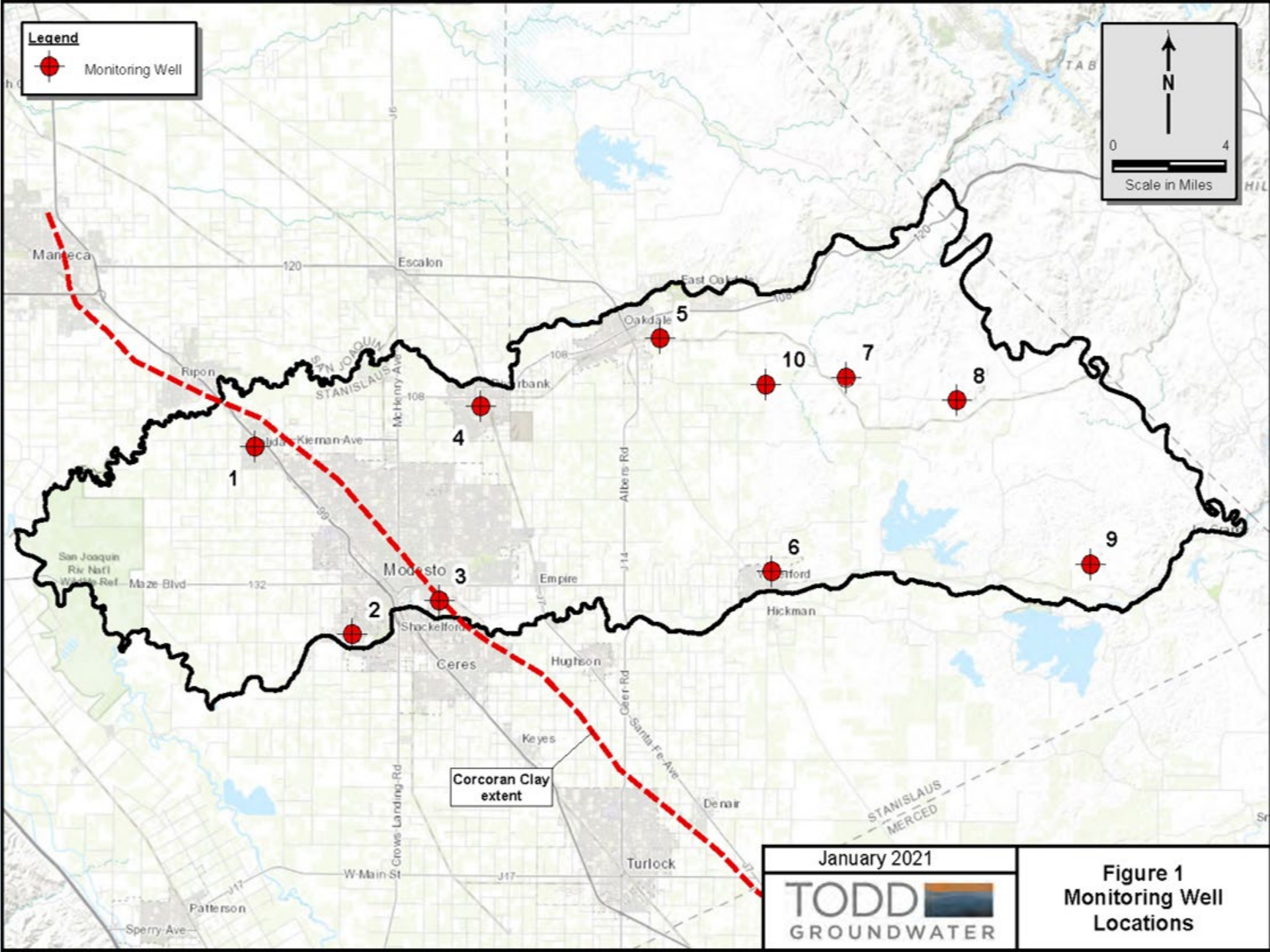
# Modesto Groundwater Basin



# Grant Funded Well Drilling

- Completed the installation of 10 dedicated long-term aquifer observation wells for water level and water quality monitoring purposes
  - Where appropriate, monitor wells were dual completed above and below the Corcoran Clay to measure hydraulic head differential to help determine direction and rate of vertical exchange between the upper and lower aquifers





**Legend**  
 ● Monitoring Well

N  
 0 4  
 Scale in Miles

Corcoran Clay  
 extent

January 2021  
**TODD**  
 GROUNDWATER

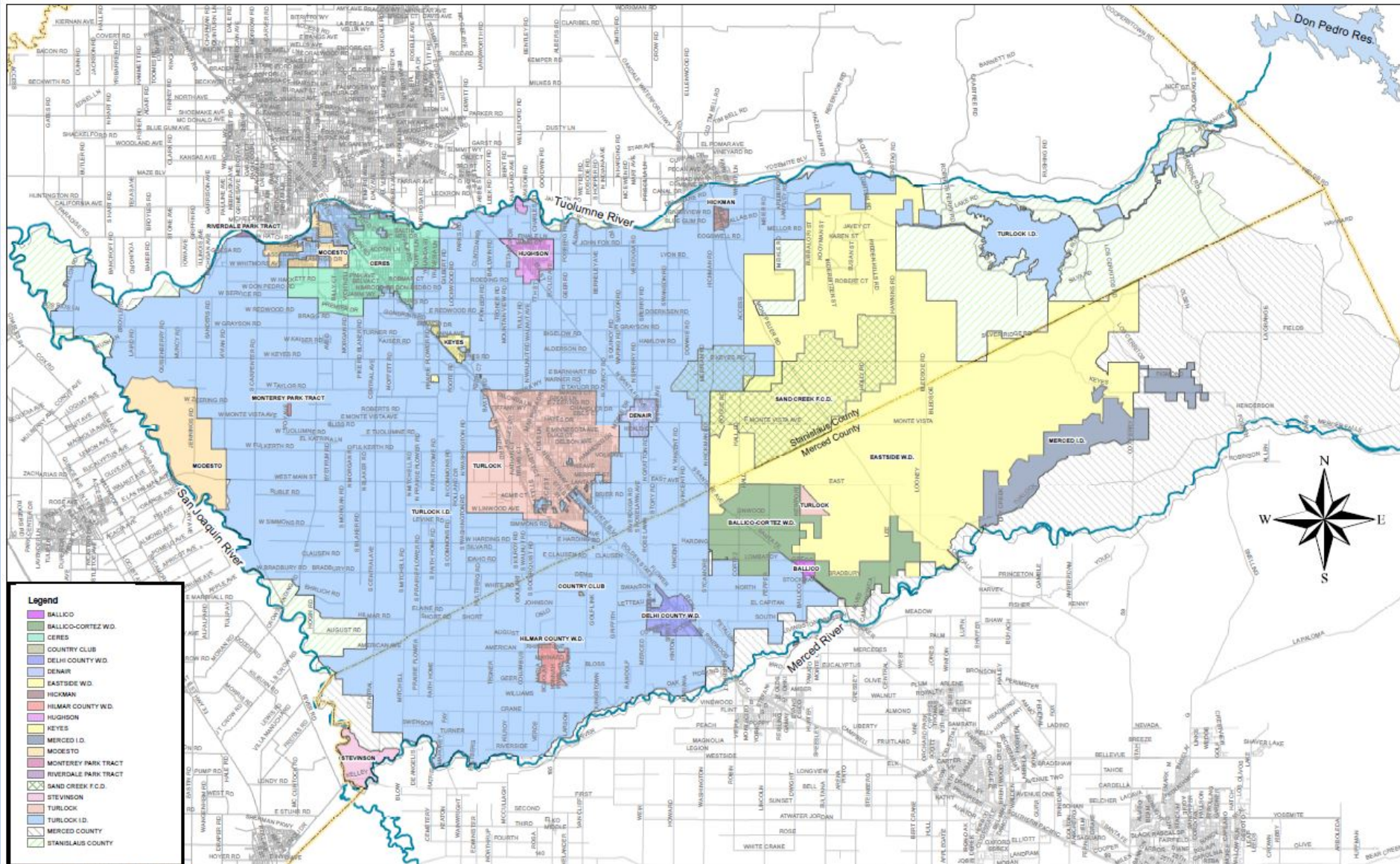
**Figure 1**  
**Monitoring Well**  
**Locations**

# Schedule

- Complete and Approve GSP for submittal to DWR by deadline of January 31, 2022
  - “Bundles” for public review released during the 2021 summer
  - More information can be found at: [strgba.org](http://strgba.org)
  - Agency action to adopt the GSP scheduled for December 2021/January 2022
    - Individual Members must take same action to approve and adopt
    - **Todd GW Presentation to the Water Advisory Committee in September**



# Turlock Groundwater Basin



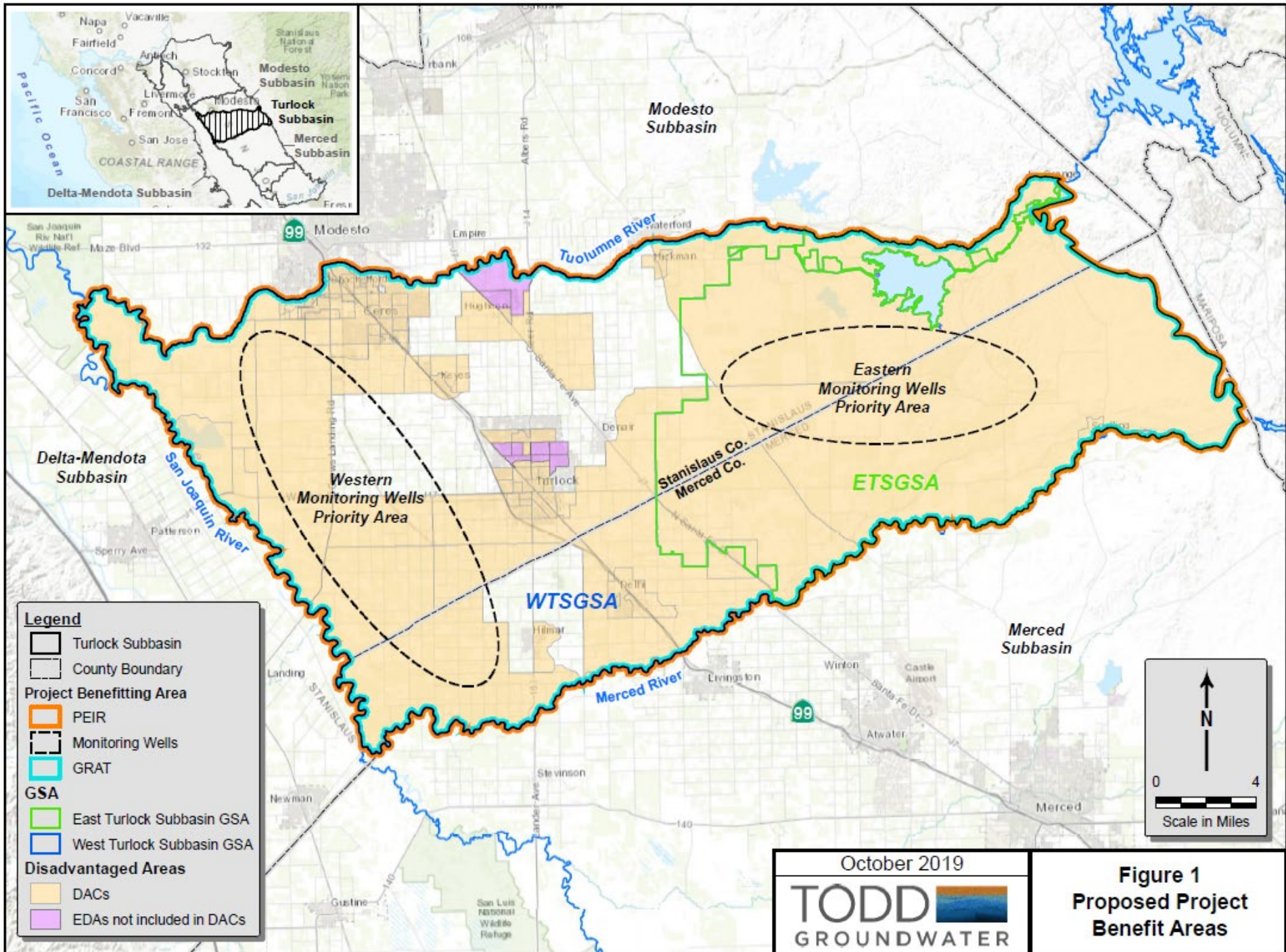
**Legend**

- BALICO
- BALICO-CORTEZ W.D.
- CERES
- COUNTRY CLUB
- DELHI COUNTY W.D.
- DENAIR
- EASTSIDE W.D.
- HICKMAN
- HILMAR COUNTY W.D.
- HUGHSON
- KEYES
- MERCED I.O.
- MERCED I.D.
- MERCED COUNTY
- MONTEREY PARK TRACT
- RIVERDALE PARK TRACT
- SAND CREEK F.C.D.
- STEVENS
- TURLOCK
- TURLOCK I.D.
- MERCED COUNTY
- STANISLAUS COUNTY

# Additional Grant Funding Activities (\$1 M)

- Monitoring Wells siting and construction
- Groundwater Recharge Assessment Tool (GRAT)
  - WAC presentation in January 2021
- Programmatic Environmental Impact Report (PEIR) for GSP Management Actions and Projects subject to CEQA





**Figure 1**  
**Proposed Project**  
**Benefit Areas**

# Schedule

- ETS GSA Prop 218 Board Decision on June 10, 2021
  - Parcel-based taxation of ~ \$5.50 per acre per year
- Complete and Approve GSP for submittal to DWR by deadline of January 31, 2022
  - “Bundles” for public review released during the 2021 summer
  - More information can be found at: [turlockgroundwater.org](http://turlockgroundwater.org)
  - Agency action to adopt the GSP scheduled for late December 2021/January 2022
    - Individual Members may take same action to approve and adopt
    - **Todd GW Presentation to the Water Advisory Committee in September**



# Questions & Discussion