



STANISLAUS COUNTY CLERK
CEQA FILING COVER SHEET

When Recorded Return To:

STANISLAUS COUNTY
Department of Planning & Community Development
1010 10th Street, Suite 3400
Modesto, CA 95354

FILED

21 FEB 12 PM 2:31

STANISLAUS CO. CLERK-RECORDER

BY Jocelyn Rodriguez

THIS SPACE FOR CLERK'S USE ONLY

Complete and attach this form to each CEQA Notice filed with the County Clerk

TYPE OR PRINT CLEARLY

Project Title

Addendum to the Negative Declaration for the West Modesto Sewer Infrastructure Project

Check Document being Filed:

- Environmental Impact Report (EIR)
- Mitigated Negative Declaration (MND) or Negative Declaration (ND)
- Notice of Exemption (NOE)
- Other (Please fill in type): Notice of Determination

Account # 121

FILED IN THE OFFICE OF THE STANISLAUS	
COUNTY CLERK ON	<u>02/12/2021</u>
Posted <u>02/12/2021</u>	Removed _____
Returned to agency on	_____
DEPUTY	<u>JOCelyn RODRIGUEZ</u>

Filing fees are due at the time a Notice of Determination/Exemption is filed with our office. For more information on filing fees and No Effect Determinations, please refer to California Code of Regulations, Title 14, section 753.5.

Date removed from posting 03/18/2021



NOTICE OF DETERMINATION

Filing of Notice of Determination in Compliance with Section 21108 or 21152 of the Public Resources Code

Project Title: Addendum to the Negative Declaration for the West Modesto Sewer Infrastructure Project

Applicant Information: Miguel A. Galvez, Deputy Director
Stanislaus County Planning and Community Development
1010 10th Street, Suite 3400
Modesto, CA 95354
(209) 525-6330

Project Location: Spencer Avenue/Marshall Avenue, Beverly Drive/Waverly, and Rouse Avenue/Colorado Avenue in the City of Modesto, California.

Background: The County of Stanislaus (County) circulated an Initial Study/Negative Declaration (IS/ND) for the West Modesto Sewer Infrastructure Project (Project) from May 4, 2018 to June 4, 2018. Since that time, a modification to the proposed Project has been identified as being necessary to revise the Project description. This Addendum is provided as a supplement to the environmental analysis provided in the Final IS/ND, pursuant to State California Environmental Quality Act (CEQA) Guidelines Section 15164.

The Project involves the installation of sanitary sewer mains and laterals in three separate unincorporated neighborhoods within Modesto, CA. The 2018 Draft IS/ND included analysis of the proposed sewer infrastructure project, but did not assess potential effects of the connection from private properties into the public sewer laterals. Initially, the connection from private properties to the public sewer system was not part of the infrastructure and anticipated to occur at later dates with private property owners incurring the associated costs. Since the completion of the IS/ND, the County commenced procuring funds from the California State Water Resources Control Board (SWRCB) to allow private property owners to abandon their septic tanks and connect to the existing City of Modesto's public sewer system.

Revised Project Description: The County, in cooperation with HUD and SWRCB, propose to install sanitary sewer mains and laterals, with private property connections to each residence, in three separate unincorporated neighborhoods within West Modesto in Stanislaus County, California (see attachments: Figure 1: Project Vicinity Map, Figure 2: Project Location Map, Figure 3: Revised Area of Potential Effects Map). It is estimated that the Project will include the installation of up to 80,000 linear feet of gravity mains and approximately 1,004 new house laterals in the Spencer/Marshall (144 services), Beverly/Waverly (527 services), and Rouse/Colorado (333 services) neighborhoods. The Spencer/Marshall neighborhood is generally located approximately 0.3 mile west of Highway 99 and is accessible from State Route 132 and Spencer Avenue. The Beverly/Waverly neighborhood is located approximately 0.9 mile west of Highway 99 and is accessible from Paradise Road. The Rouse/Colorado neighborhood is located approximately 0.6 mile west of Highway 99 and is accessible from Tuolumne Boulevard and Roselawn Avenue. The following street intersections and road segment are part of the Project site: the California/Marshall Avenue intersection; the Paradise Road/Pine Tree intersection; and approximately 100' east of the Lombardy Drive/Ritsch Lane intersection.

The Spencer/Marshall, Beverly/Waverly, and Rouse/Colorado neighborhoods are disadvantaged communities located in West Modesto with predominantly residential parcels that currently rely on septic tanks for the treatment of sewage. The Project is proposed in response to health and safety concerns associated with failing septic systems which could lead to the degradation of groundwater quality. The Project will include the installation of a new sewer system with approximately 80,000 linear feet of sewer main and street reconstruction. The completed Project will allow property owners to abandon their existing septic tanks and connect to a public sewer system with private property connections paid for by State Water Board grant funding awarded to the County and installed through individual construction contracts approved by the County.

The new sewer infrastructure will connect into the City of Modesto's existing public sewer system. Upon completion of the Project, ownership of the public sanitary sewer improvements will be transferred to the City of Modesto for operation and maintenance.

Existing private septic systems and water services will remain active during Project construction. No road closures are anticipated to occur and access to each residence will be maintained. Minor temporary detours for local traffic may take place. Temporary construction easements, utility easements, and encroachment permits may be needed on a limited basis to accommodate the installation of the proposed improvements. Construction of the public sanitary sewer improvements for the Spencer/Marshall area is anticipated to last six months, for the Beverly/Waverly area eighteen months, and for the Rouse/Colorado area twelve months. Private sewer connections from individual properties to the public sewer laterals are expected to be completed within two years of the City's acceptance of the public sewer improvements.

The City of Modesto's (City) River Trunk Realignment project is co-located in the Colorado Avenue street segment of Project Area 9. The City's project will include construction of gravity pipelines, force mains, and two new pump stations. Construction of the public sanitary sewer improvements for the Rouse/Colorado Project (Area 9) will be completed concurrently with the City's project. The City prepared a Wastewater Master Plan Final Environmental Impact Report (FEIR) in October of 2019 which included the River Trunk Realignment project. The City's project impacts were reviewed and were not found to affect the County's sewer Project.

The Project will be constructed using local, SWRCB, and Community Development Block Grant funds; therefore, coordination with the HUD under NEPA will be required and the County is the lead agency for CEQA purposes and the responsible entity for NEPA purposes.

Attachments:

Figure 1: Project Vicinity Map

Figure 2: Project Location Map

Figure 3: Revised Area of Potential Effects Map

Name of Agency Approving Project: Stanislaus County Board of Supervisors

Lead Agency Contact Person: Miguel A. Galvez, Deputy Director

Telephone: (209) 525-6330

This is to advise that the **Stanislaus County Board of Supervisors** on February 9, 2021 adopted an Addendum to the Negative Declaration approved on July 17, 2018. On July 17, 2018, the Board approved the above described project and made the following determinations regarding the above described project:

1. The project **will not** have a significant effect on the environment.
2. A **Negative Declaration** was prepared for this project pursuant to the provisions of CEQA.

The **Negative Declaration** and record of project approval may be examined at:

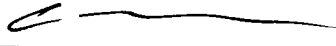
Stanislaus County Department of Planning and Community Development
1010 10th Street, Suite 3400
Modesto, California 95354

3. Mitigation measures **were not** made a condition of the approval of the project.
4. A mitigation reporting or monitoring plan **was not** adopted for this project.

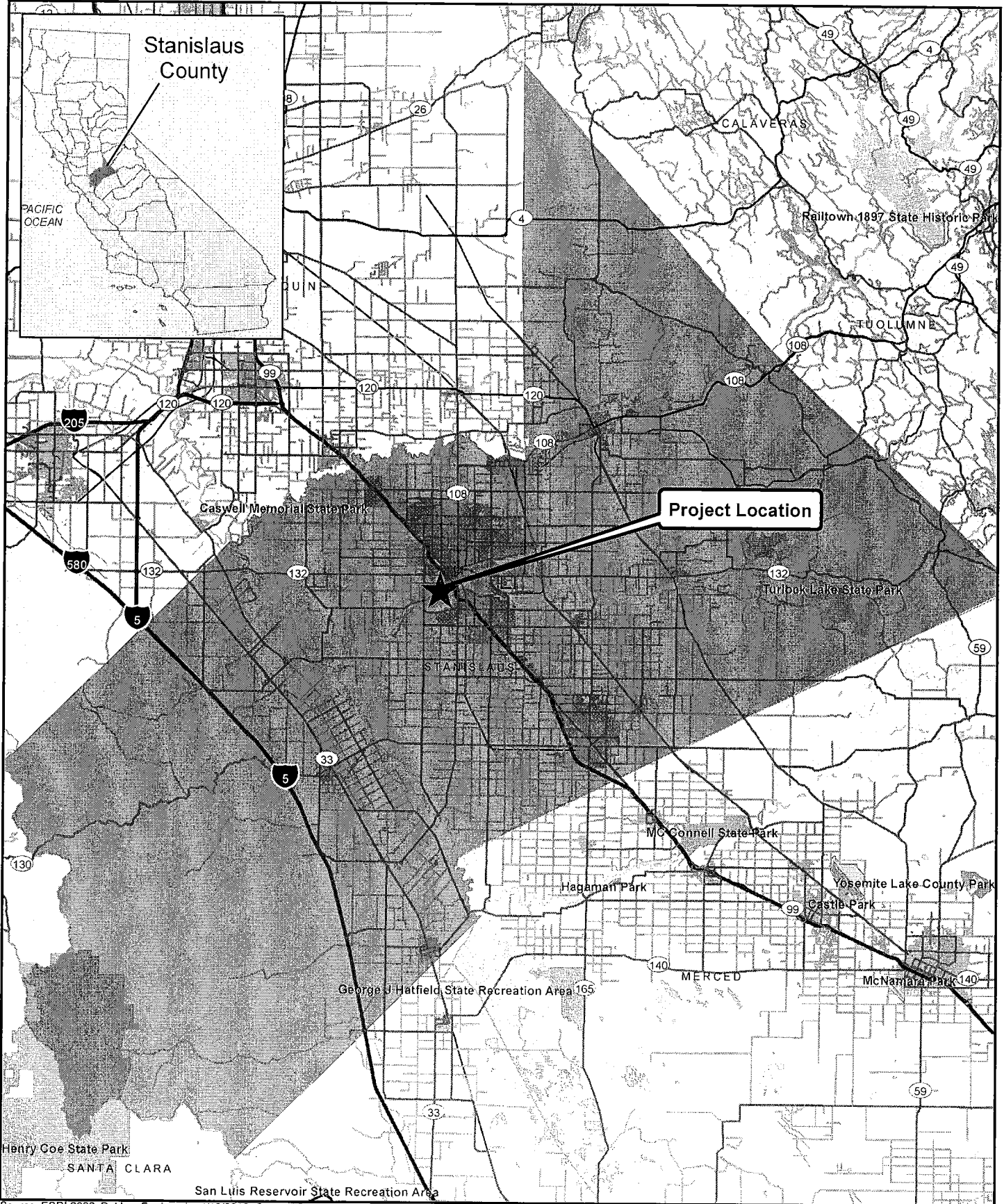
5. A statement of Overriding Considerations **was not** adopted for this project.
6. Findings **were** made pursuant to the provisions of CEQA. This is to certify that the final EIR with comments and responses and record of project approval, or the Negative Declaration, is available to the General Public @ <http://www.stancounty.com/planning/pl/agenda-min.shtm>

2.11.2024

Dated



Angela Freitas, Director
Planning and Community Development Department



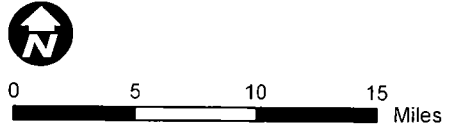
V:\2453 Stanislaus City Sewer\F1_Vicinity_20180226.mxd

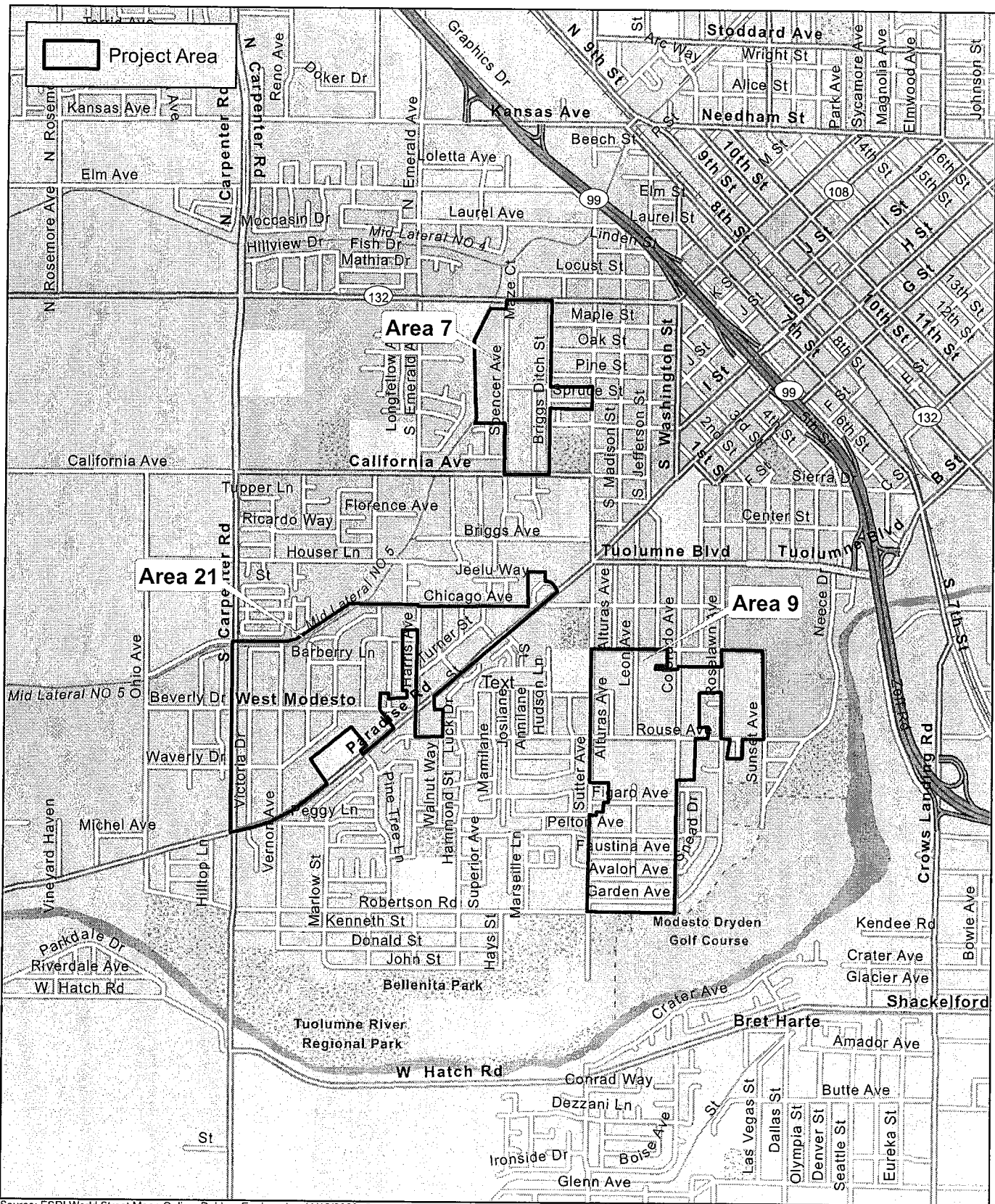
Source: ESRI 2008; Dokken Engineering 4/16/2018; Created By: aasaro

FOR ILLUSTRATIVE PURPOSES ONLY

FIGURE 1
Project Vicinity

HUD Project No: B-17-UC-06-0010
West Modesto Sewer Infrastructure Project
Stanislaus County, California





vt1836_11insBridgeCultural\F2_Loc_10-12-10.mxd

Source: ESRI World Street Maps Online; Dokken Engineering 11/18/2020; Created By: kchen

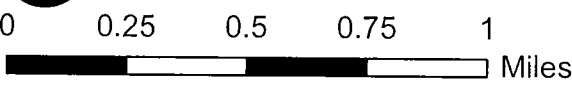


FIGURE 2
Project Location

HUD Project #: B-17-UC-06-0010
West Modesto Sewer Infrastructure Project
Stanislaus County, California

FOR ILLUSTRATIVE PURPOSES ONLY



Figure 3
Revised Area of Potential Effects
Page 1 of 10
 HUD Project No.: B-17-UC-06-0010
 West Modesto Sewer Infrastructure Project
 Stanislaus County, California



	2018 APE		Area 9
	Area 7		Area 21
	Revised APE		Revised APE

1 inch = 1,200 feet

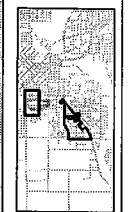
0 600 1,200 1,800 2,400 3,000 Feet

FOR ILLUSTRATIVE PURPOSES ONLY

FIGURE 3



Figure 3
Revised Area of Potential Effects
 Page 2 of 10
 HUD Project No.: B-17-UC-06-0010
 West Modesto Sewer Infrastructure Project
 Stanislaus County, California



	2018 APE		Area 9
	Area 7		Area 21
	Revised APE		Revised APE

1 inch = 200 feet

0 100 200 300 400 500 Feet

Source: ESRI Maps Online; Director Engineering 3/27/2020; Created By: asabr

FOR ILLUSTRATIVE PURPOSES ONLY



Figure 3
Revised Area of Potential Effects
 Page 3 of 10
 HUD Project No.: B-17-UC-06-0010
 West Modesto Sewer Infrastructure Project
 Stanislaus County, California



	2018 APE
	Area 9
	Area 7
	Area 21
	Revised APE

1 inch = 200 feet

0 100 200 300 400 500 Feet

FOR ILLUSTRATIVE PURPOSES ONLY

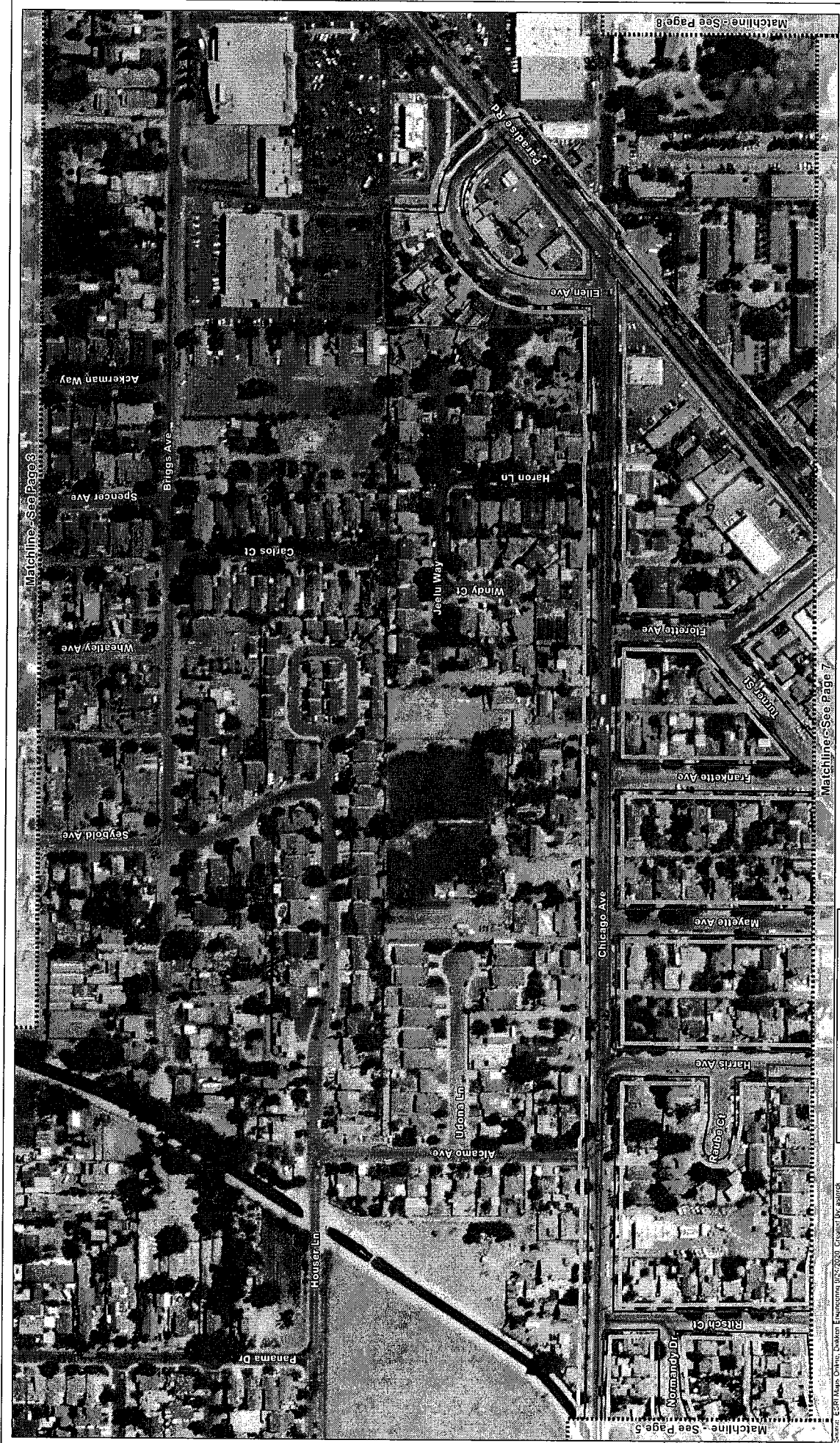
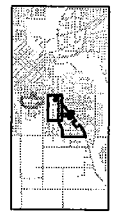


Figure 3
Revised Area of Potential Effects
 Page 4 of 10
 HUD Project No.: B-17-UC-06-0010
 West Modesto Sewer Infrastructure Project
 Stanislaus County, California



	2018 APE		Area 9
	Area 7		Area 21
	Revised APE		

1 inch = 200 feet

0 100 200 300 400 500 Feet

FOR ILLUSTRATIVE PURPOSES ONLY



Figure 3
Revised Area of Potential Effects
 Page 5 of 10
 HUD Project No.: B-17-UC-06-0010
 West Modesto Sewer Infrastructure Project
 Stanislaus County, California



2018 APE

 Area 9

 Area 21

Area 7

 Revised APE

N

1 inch = 200 feet

0 100 200 300 400 500 Feet

Source: ESRI Maps Online; Duxker Engineering 9/27/2020; Created by: nbarak

FOR ILLUSTRATIVE PURPOSES ONLY



Figure 3
Revised Area of Potential Effects
 Page 6 of 10
 HUD Project No.: B-17-UC-06-0010
 West Modesto Sewer Infrastructure Project
 Stanislaus County, California



2018 APE

 Area 9

 Area 21

 Area 7

 Revised APE

N
1 inch = 200 feet
 0
 100
200
300
400
500
Feet

FOR ILLUSTRATIVE PURPOSES ONLY

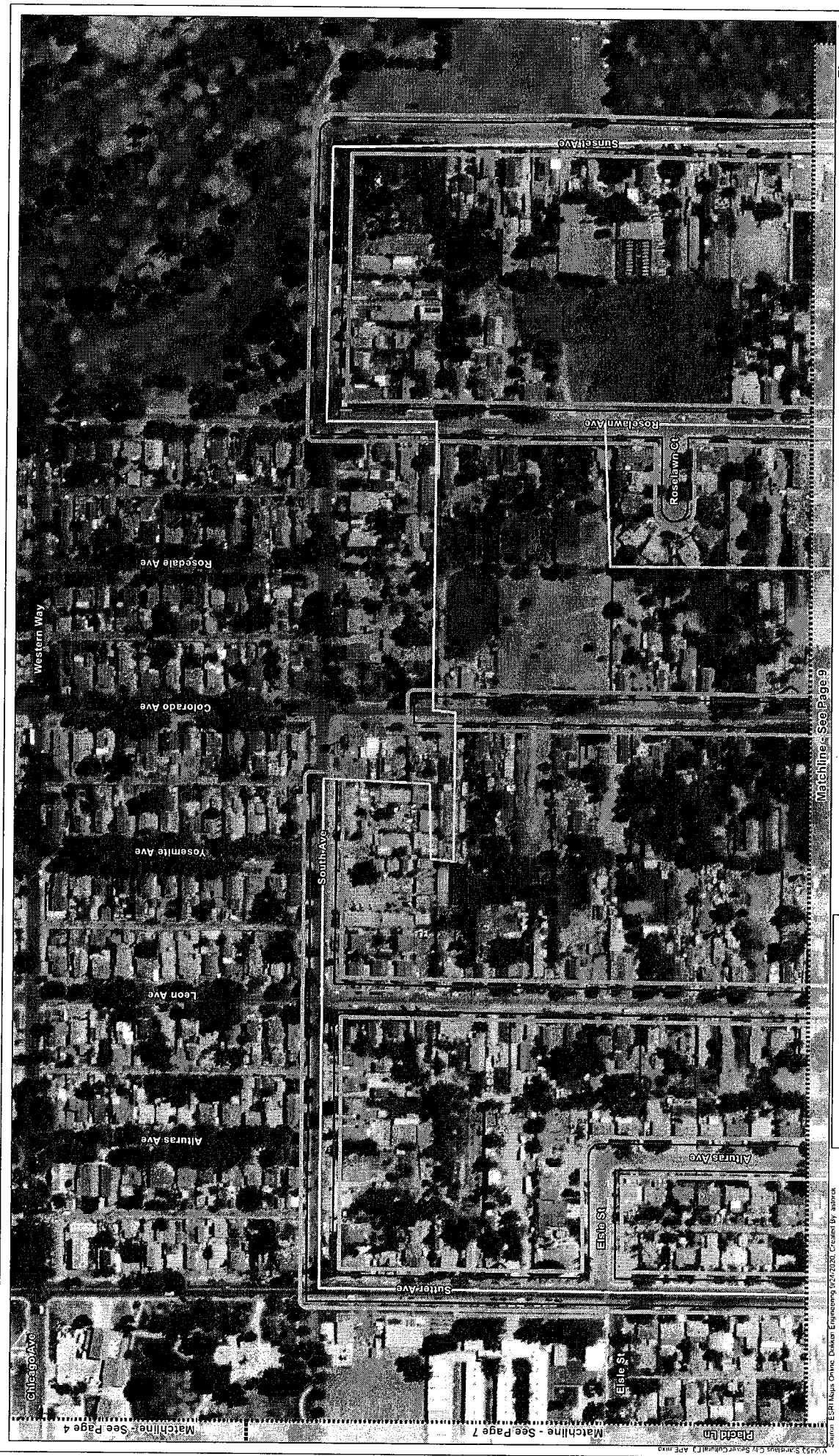


Figure 3
Revised Area of Potential Effects
Page 8 of 10
 HUD Project No.: E-17-JC-06-0010
 West Modesto Street Infrastructure Project
 Stanislaus County, California



	2018 APE		Area 9
	Area 7		Area 21
	Revised APE		Revised APE

1 inch = 200 feet

0 100 200 300 400 500 Feet



Matchline - See Page 7
 Matchline - See Page 4
 Matchlines - See Pages 9
 W453 Stanislaus County Sewer District, ARE.mxd
 Project 10
 Figure 3: EAP Map, Orange Division, Engineering 03/27/2024, Created by: abrook

FOR ILLUSTRATIVE PURPOSES ONLY



Figure 3
Revised Area of Potential Effects
Page 9 of 10
 HUD Project No.: B-17-UC-06-0010
 West Modesto Sewer Infrastructure Project
 Stanislaus County, California



	2018 APE		Area 9
	Area 7		Area 21
	Revised APE		Revised APE

1 inch = 200 feet

0 100 200 300 400 500 Feet

FOR ILLUSTRATIVE PURPOSES ONLY



Figure 3
Revised Area of Potential Effects
 Page 10 of 10
 HUD Project No.: B-17-UC-06-0010
 West Modesto Sewer Infrastructure Project
 Stanislaus County, California



	2018 APE		Area 9
	Area 7		Area 21
	Revised APE		

1 inch = 200 feet

0 100 200 300 400 500 Feet

FOR ILLUSTRATIVE PURPOSES ONLY