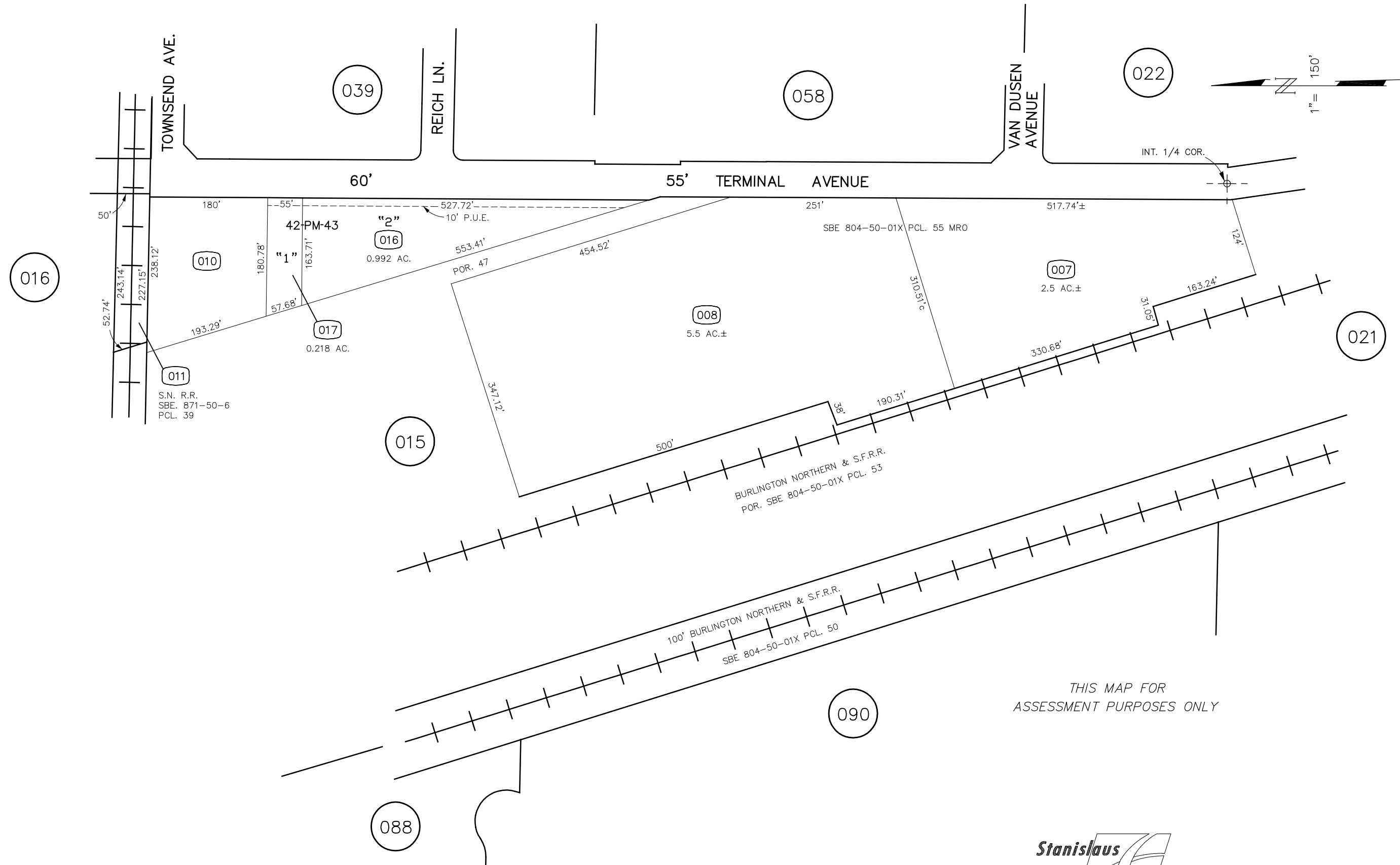


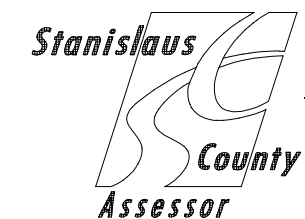
POR. NW 1/4 SEC. 36 T.2S. R.9E. M.D.B.& M.

006 060 075 - 020
091 011



THIS MAP FOR ASSESSMENT PURPOSES ONLY

FROM 04-27, 04-49, 04-52
DRAWN 7-24-74
REVISED 2-13-92 KJ, 11-29-04 DH, 6-21-05 (V) DH, 1-31-06 DH, 08-04-10 MB



75,91,06