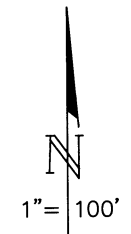


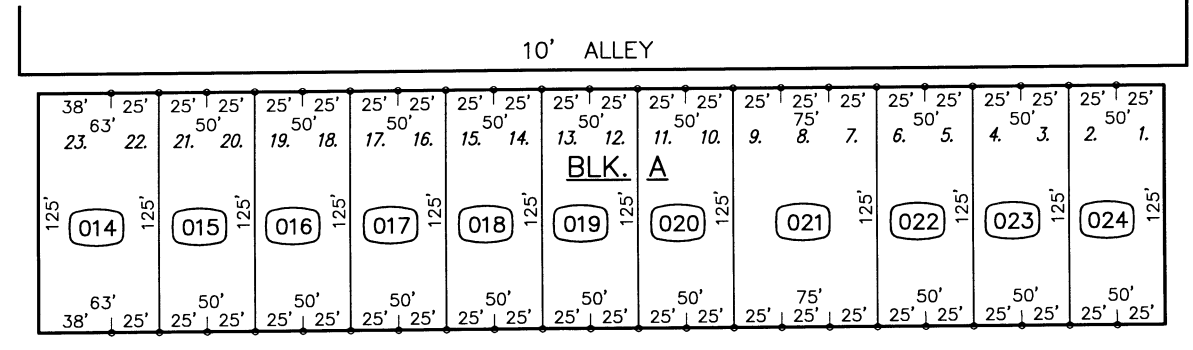
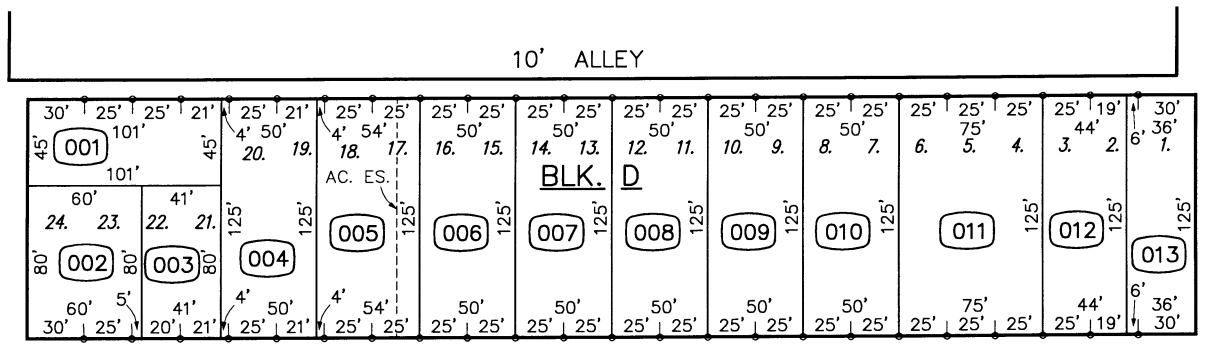
POR. SW 1/4 SEC. 5 T.4S. R.9E. M.D.B.& M.
 POR. MODESTO HIGH SCHOOL TRACT - BLKS. A, B, D & E (09M90)

080 058 037 - 033

THIS MAP FOR
 ASSESSMENT PURPOSES ONLY



032

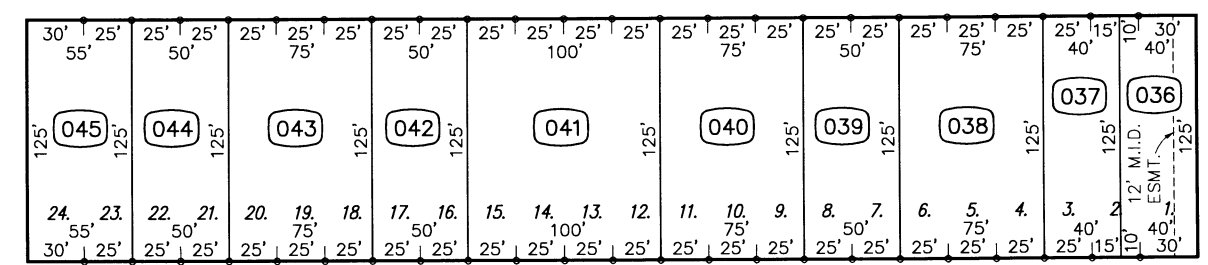


60' PELTON AVENUE

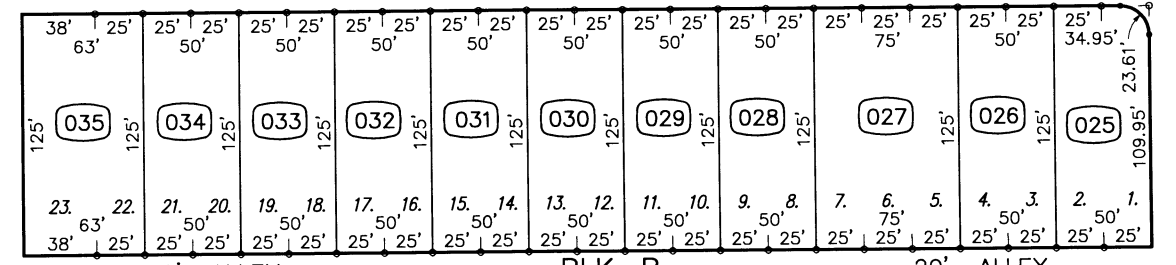
60' LEON AVENUE

015

60' SUTTER AVENUE

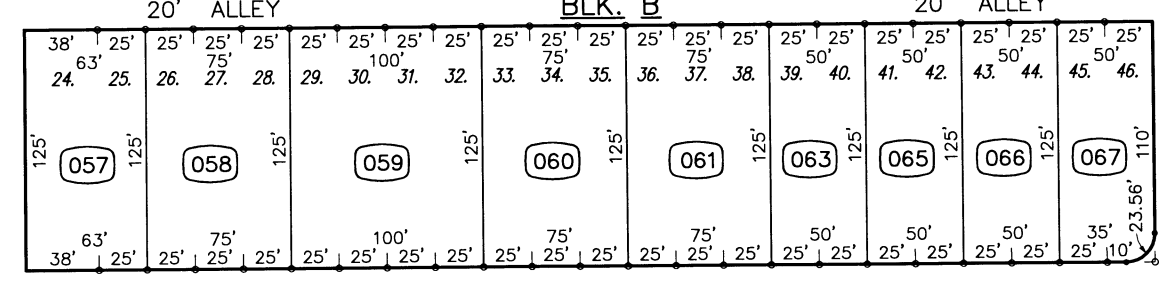
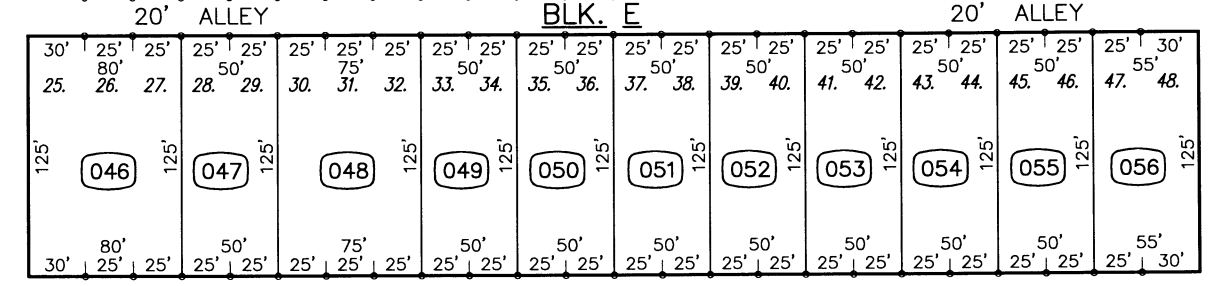


60' LEON AVENUE



038

60' COLORADO AVENUE



60' FAUSTINA AVENUE

60' FAUSTINA AVENUE

034

FROM 144-67, 9, 10 & 37-33
 DRAWN 1-17-77
 REVISED 10-16-85, 11-3-06 DH, 9-19-07 (V)DH

