

1

2

3

4

5

6



7

SWRP Goals/Objectives

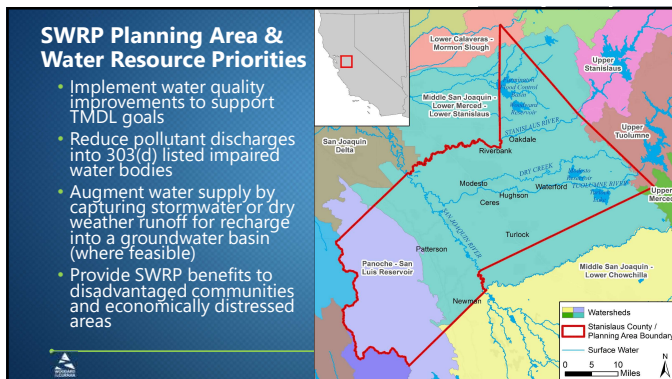
8



9

Identification of Planning Area & Priorities

10



11

Project Solicitation and Prioritization

12

Project Solicitation Process

- Solicitation period October through December 2017 using Opti
- Projects were prioritized
- Benefits were summarized
- Prioritized Project List submitted to SWRCB January 2018

www.eaststanirwm.org/projects

13

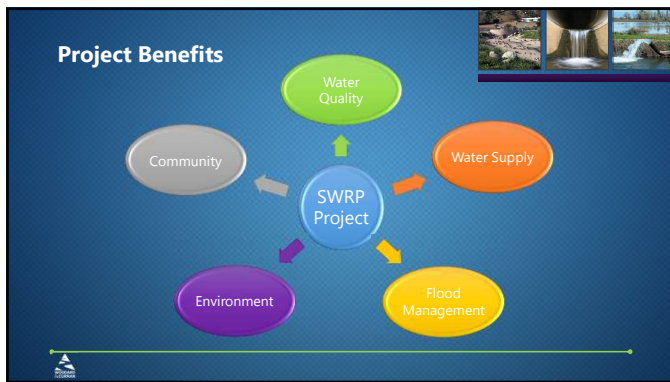
Project Prioritization

58 p
17 p
41 p

All SWRP Projects

- Ready to Proceed Projects
- Concept Projects
- Watershed Boundaries
- Stanislaus County / Planning Area Boundary

14



15

SWRP Main Benefits

Benefit Category	Main Benefit
Water Quality	Increased filtration and/or treatment of water
Water Supply	Water supply reliability Conjunctive Use
Flood Management	Decreased flood risk by reducing runoff rate and/or volume
Environmental	Environmental habitat protection and/or improvement, including: - Wetland enhancement/creation; - Riparian enhancement; and/or - Instream flow improvement
Community	Increased urban green space Employment opportunities provided Public education

16

SWRP Additional Benefits

Benefit Category	Additional Benefit
Water Quality	Nonpoint source pollution control Reestablished natural water drainage and treatment
Water Supply	Water conservation
Flood Management	Reduced sanitary sewer overflows
Environmental	Reduced energy use, greenhouse gas emissions, or provides a carbon sink Reestablishment of natural hydrograph Water temperature improvements
Community	Community involvement Enhance and/or create recreational and public use areas

17

Project Prioritization Approach

- Eligible Projects receive credit for:
 - Providing SWRP Main Benefits and Additional Benefits
 - Addressing regional watershed priorities
 - Progress towards project implementation
- Projects are prioritized based on points awarded to each project
- Project scores are intended as a tool for the Project Proponents
- Scores do **not** dictate which projects receive future funding

18

Quantified Project Benefits

- Summarized using maps and tables
- Broken down by benefit category (see handouts)

19

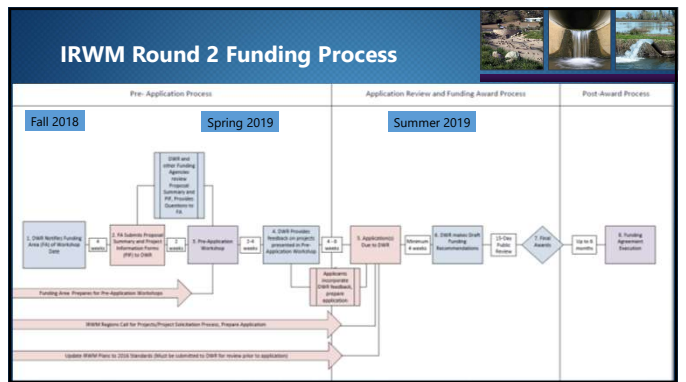
Project Funding Strategies

20

IRWM Funding Opportunities

- IRWM Implementation Funding
 - Draft PSP – September 2018
 - Final PSP – late 2018
 - Pre-application workshops – February-July 2019
 - Applications due – ~8 weeks after pre-application workshop
- At least 10% of overall IRWM implementation funding set aside for DAC

21



22

IRWM DAC Funding Opportunities

- IRWM DAC Involvement
 - \$3.1 to the San Joaquin River Funding Area – 7 IRWM regions
 - Submitted and contract is expected in September
 - Work is expected to start in October
- IRWM DAC Implementation Funding
 - At least 10% of overall IRWM implementation funding set aside for DAC

23

Other Funding Opportunities

Multiple benefit projects = funding opportunities outside of usual stormwater suspects

- Examples:
 - California Natural Resources Agency
 - \$7.0 million for the acquisition, restoration, protection and development of river parkways – due 9/27
 - Hazard Mitigation Assistance Programs
 - Transportation funds
 - Upcoming parks bonds measure

24

Prop 1 Storm Water Grant Program

25

- ## Prop 1 Storm Water Program
- Overview/Review of Prop 1 Storm Water Program
 - Overall Program Requirements & Priorities
 - Multiple Benefits Requirements
 - SWRP Requirements
 - Development Strategies for Potential Grant Projects
 - Projects Identification
 - Project Development
 - Storm Water Resource Plan
 - Scheduling
 - Questions/Proposed Projects Discussion

26

Prop 1 Storm Water Program Project Funding Breakdown

Round 2 Funding Availability – Projected to be up to **\$86 million**

Project Type	Minimum Grant Amount	Maximum Grant Amount
Implementation	\$250,000	\$10,000,000

Match Requirement

- Minimum local funding match of 50% of the total project cost. (Reduced for DACs)
- Matching costs can be included for project activities after 11/04/2014.
- State funds cannot be included as match.

27

Prop 1 Storm Water Program Anticipated Timeline

	Date
Board Adoption of Guidelines	12/15/2015
Round 2 Solicitation Opens for Implementation Projects ¹	Early 2019
Solicitation Closes for Implementation Projects	To be announced
Implementation Project Funding Lists Available	To be announced
Storm Water Resource Plan Requirement Due ²	90 days after funding list

Based on Round 1 Process:

1. Pre-application process - SWRCB may review all completed short applications and give feedback to help applicant craft a stronger project.
2. The SWRCB is giving applicants 90 days after Implementation Funding List for application to submit the self-certified required SWRP (or functional equivalent) with proposed project incorporated.

28

Prop 1 Storm Water Program Grant Eligibility

Eligible Applicants*

- Public Agencies
- 501(c)(3) Nonprofits
- Public Utilities
- Indian Tribes
- Mutual Water Companies

*Must show capacity to manage grant

Other groups could potentially be involved as project partners

29

- ## Prop 1 Storm Water Program Implementation Project Requirements
- Be included and implemented in an adopted IRWMP
 - Be included in a SWRP consistent with the Water Code requirements and SWRP Guidelines
 - Be consistent with the applicable water quality control plan (Basin Plan) adopted by the SWRCB and/or Regional Water Board
 - Demonstrate the capability of contributing to sustained, long-term water benefits for a minimum period of 20 years
 - Be operated and maintained for the project's useful life
 - Demonstrate adequate rights of way for the useful life (i.e., 20-years) of the project
 - Be multi-benefit project containing a minimum of two benefits listed in Section G – Storm Water Management Benefits

30

Prop 1 Storm Water Program Priorities and Preferences

- Preference will be given to projects that capture and "re-purpose" storm water for a variety of potential benefits, including (but not limited to) water supply, flood control, habitat enhancement/restoration, and creating green spaces.
- Preference will also be given to projects that include partnerships between the organizations that are responsible for or have a role in realizing the multiple benefits identified in the project application.
- Applicants should look for new and innovative technologies or practices to meet the aforementioned goals.

MEANING
In addition to stormwater requirements, successful projects will likely also include


- Watershed or large/regional-level partnerships
- Stormwater capture and reuse
- New/innovative methods

31

Prop 1 Storm Water Program Implementation Project Types

Specific types of eligible projects include:


- Green Infrastructure
- Rainwater and stormwater capture
- Stormwater treatment facilities
- Demonstration or pilot projects designed to lead to widespread implementation of the practice throughout the watershed
- And more!



32

Prop 1 Storm Water Program Storm Water Management Benefits


- Project must address two to three storm water management benefits
- Primary (Main) Benefit
 - Must be quantifiable
- Secondary Benefits
 - One to Two Benefits
 - Quantifiable or Non-Quantifiable
- Application:
 - Estimate annual quantifiable benefits
 - Reference backup documentation
 - Calculate cost effectiveness
 - Narrative description of any non-quantifiable benefit claimed.



33

Prop 1 Storm Water Program Storm Water Resource Plan Requirement

- Implementation projects must be listed in the SWRP or equivalent plan
 - A project must be specifically listed or included as a programmatic element of a SWRP.
 - Programmatic element projects must be designed to achieve specific quantified performance goals identified in the SWRP (or functionally equivalent plan).
 - The only exceptions are: (1) a small DAC <20,000 people, and (2) for projects that are in an ASBS and are covered under an approved ASBS Compliance Plan.



34

Prop 1 Storm Water Grant Program Project Development Strategies

35

Prop 1 Storm Water Program Project Development

Does the proposed project follow the intent of Prop 1 and comply with SWRCB requirements and preferences?

- Be designed to infiltrate, filter, store, evaporate, treat, or retain stormwater or dry weather runoff
- Respond to climate change
- Contribute to regional water security
- Contain a minimum of two Stormwater Management Benefits
- Capture and "re-purpose" stormwater for a variety of potential benefits, including (but not limited to) water supply, flood control, habitat enhancement/restoration, and creating green spaces
- Include partnerships between the organizations that are responsible for or have a role in realizing the multiple benefits identified in the project application
- Include new and innovative technologies or practices to meet the aforementioned goals

36

Prop 1 Storm Water Program Project Development

Identify other potential project partners and/or projects that can strengthen project

- Projects/Partners may add/strengthen multiple benefits
- Projects/Partners may broaden geographic scope to watershed/region
- Projects/Partners may help applicant develop matching funds with funds or in-kind assistance
- Projects/Partners may improve potential DAC consideration
- If not partnering, are there agencies or groups that may offer this project a letter of support?

37

Prop 1 Storm Water Program Project Development – DACs & EDAs

Disadvantaged Communities (DAC) and Economically Distressed Areas (EDA)

Projects that DIRECTLY benefit DACs or EDAs receive special consideration in funding

- Matching Requirement (50%) reduced for projects that directly benefit a DAC or EDA – as little as 10%
 - Calculated via community size, MHI, and how much of the project is in the DAC
- Project scores higher (15 of 100 points for DACs)
- For other funding programs, percentage of funding set aside for DACs
- DAC Mapping Tool - <https://gis.water.ca.gov/app/dacs/>

38

Prop 1 Storm Water Program Project Development – Matching Costs

Matching Costs = 50% project funding

- Can you leverage some of required matching costs:
 - Applicable costs that are being/have been tracked since November 2014 or can be tracked moving forward
 - Non-state funding sources (EPA, DOT, etc.)
 - Partnerships or leveraged projects

Note that a \$2 million project requires \$1 million in matching, so if the scope is broadened, additional work can be included as match, but the new project must meet all requirements and be in SWRP.

39

Prop 1 Storm Water Program Project Development

Project Timeline

- Is the proposed project far enough in development/ design for Round 2?
 - Can project scope, cost, timeline, quantifiable benefits, and accompanying plans/graphics be included in the pre-application (if offered) and clarified in the full application?
- Can the project be constructed within approximately 4 years?
 - If not, can project be phased?

Round	Award	Construction Complete	Final Report	Work Completion	Final Invoice
Implementation Round 1	Fall 2016	July 2020	September 2020	October 2020	November 2020
Implementation Round 2	ESTIMATED 2019	ESTIMATED 2023	ESTIMATED 2023	ESTIMATED 2023	ESTIMATED 2023

40

Next Steps

- Complete Administrative Draft, Public Draft and Final Draft
- Complete SWRP website
- Assess stormwater capture/groundwater recharge sites
 - Developing scope of work, assessment this summer/fall
- Conduct stormwater monitoring
 - Monitoring will occur early rainy season (October 2018-January 2019)

The SWRP will be completed so that included projects will be eligible for SWGP and IRWM Implementation Funding in late 2018/early 2019

41

Questions/Comments?

Hawkeye Sheene
415.321.3427
hsheene@woodardcurran.com
Woodard & Curran

42

SWRP Planning Area: Stanislaus County

- Main Watersheds:
 - Middle San Joaquin – Lower Merced – Lower Stanislaus
 - Panoche – San Luis Reservoir
- Other Watersheds
 - Upper Tuolumne, Upper Stanislaus, Upper Merced, Lower Calaveras – Mormon Slough

43

SWRP Planning Area: Stanislaus County

- East Stanislaus and Westside San Joaquin IRWMP areas
- Stanislaus and Tuolumne Rivers Groundwater Basin Association, Turlock Groundwater Basin Association, and San Luis & Delta-Mendota Water Authority groundwater management plan area

44

SWRP Planning Area: Stanislaus County

Coordination between concurrent water resource planning areas facilitates effective regional water planning

45

SWRP Planning Area: Water Quality Priorities

- Total Suspended Solids
- Mercury / Methylmercury
- Diazinon
- Chlorpyrifos
- Diuron
- Total Nitrogen

46

Project Prioritization

- [A Storm Water Resource Plan] shall use measurable factors to identify, quantify, and prioritize potential stormwater and dry weather runoff capture projects. (Wat. Code, § 10562, subd. (e).)
- Project Eligibility (Fatal Flaw Analysis)
 - Each Project must meet **all** of the following:

Can the project be sponsored by an eligible applicant?	Yes/No
Is the project a stormwater or dry weather runoff project?	Yes/No
Does the project provide two or more SWRP Main Benefits?	Yes/No
Does the project provide at least one SWRP Additional Benefit?	Yes/No

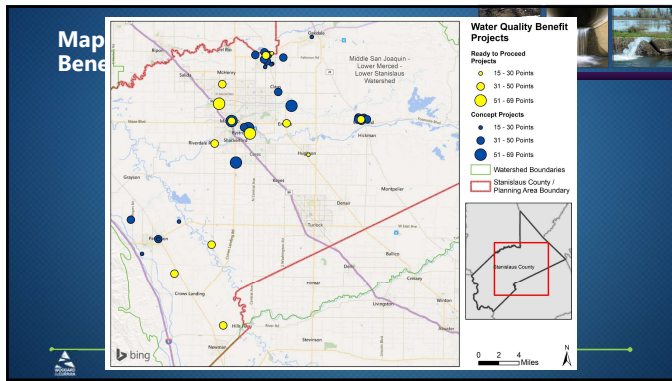
47

Water Quality Benefits

- 13 Ready to proceed projects
- 29 Concept projects

SWRP Benefit	Conceptual	Ready to Proceed	Total
Reduction in TSS loading (lbs/yr)	204,100	750	204,850
Trash removed (lbs/yr)	5,100	100	5,200
Volume of water treated (mgd)	510	10	520
Volume of runoff infiltrated (AFY)	2,582	3,042	5,624

48



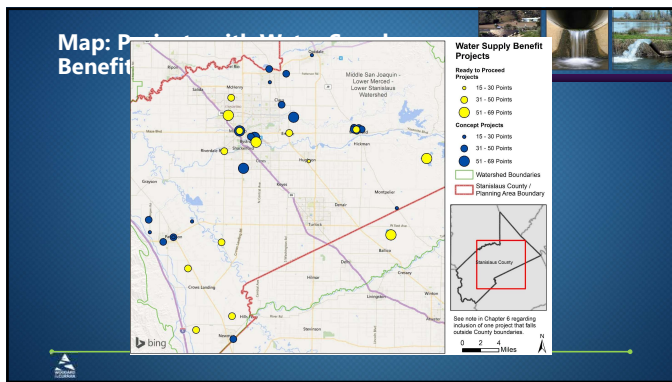
49

Water Supply Benefits

- 14 Ready to proceed projects
- 28 Concept projects

SWRP Benefit	Conceptual	Ready to Proceed	Total
Increase in water supply through direct groundwater recharge (AFY)	19,332	19,542	38,874
Increase in water supply through direct use (AFY)	2,572	101,000	103,572
Increase in water supply through in lieu recharge/conjunctive use (AFY)	15,000	10,000	25,000
Reduction in water use (AFY)	-	240	240

50



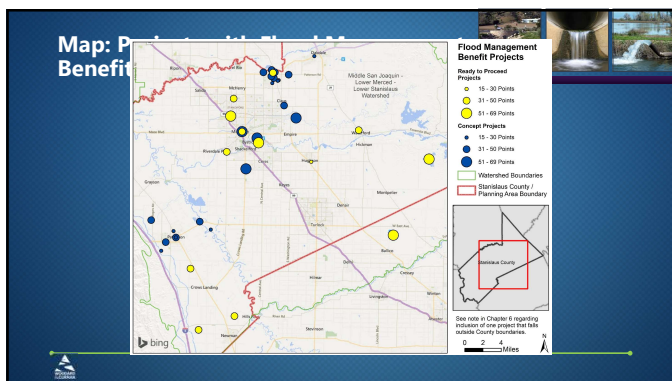
51

Flood Management Benefits

- 11 Ready to proceed projects
- 27 Concept projects

SWRP Benefit	Conceptual	Ready to Proceed	Total
Reduction in peak flow discharge (cfs)	145	2,685	2,830
Reduction in volume of potential flood water (AFY)	2,662	25,052	27,714
Reduction in sewer overflow volumes (AFY)	7	-	7

52



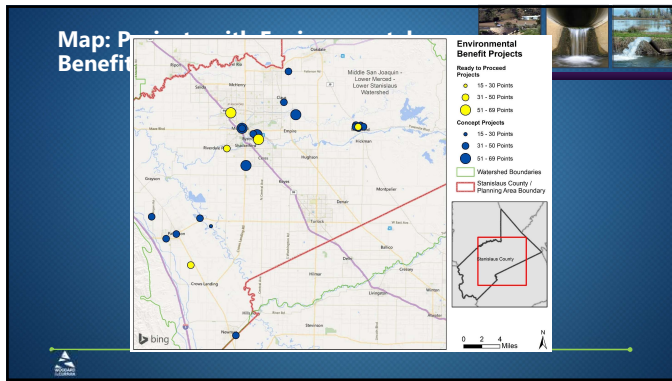
53

Environmental Benefits

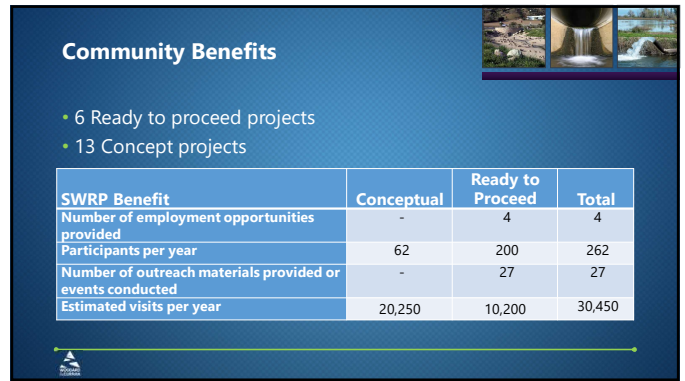
- 9 Ready to proceed projects
- 14 Concept projects

SWRP Benefit	Conceptual	Ready to Proceed	Total
Habitat protected or improved (acres)	50	3,513	3,563
Instream flow rate improvement (cfs)	65	15	80
Energy consumption reduced (KWH/year)	525,000	997,500	1,522,500
GHG emissions reduced (tons/year)	391	743	1,134

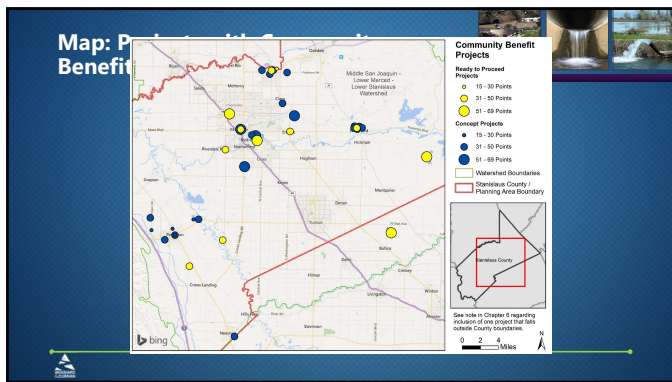
54



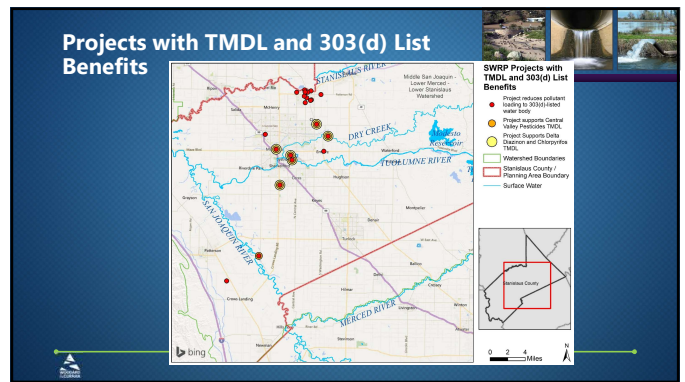
55



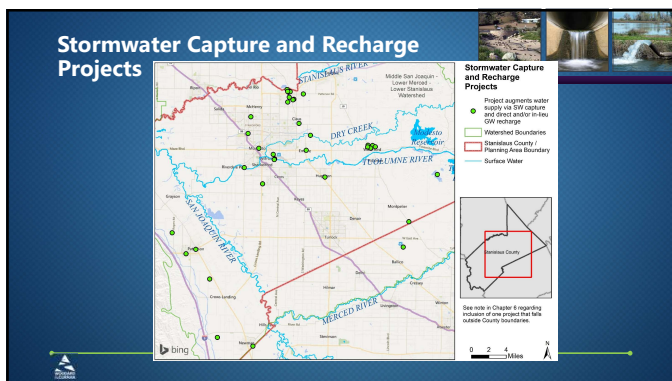
56



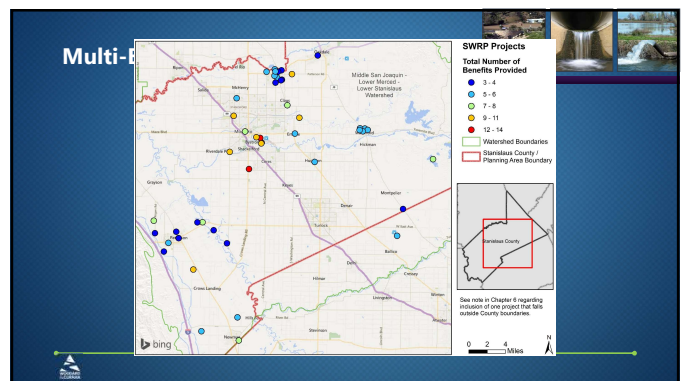
57



58



59



60