



STORM WATER RESOURCE PLAN

STAKEHOLDERS MEETING

October 23, 2017

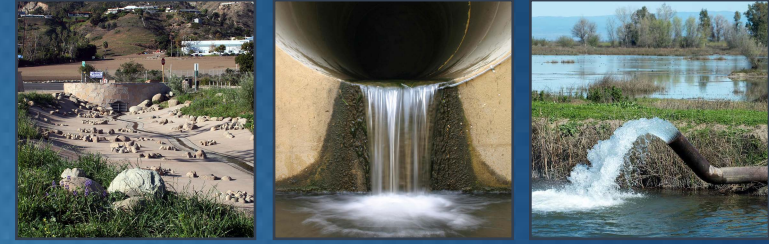
Presenters: Hawkeye Sheene, Brian Van Lienden

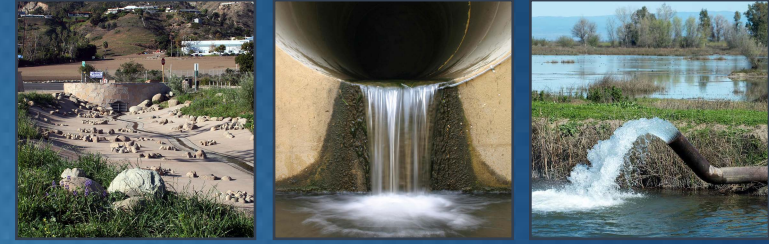


National Experience. Local Focus.

Agenda

- Introductions
- SWRP Overview
 - Background
 - Schedule
 - Goals and Objectives
 - Watershed/Planning Area Identification
 - Watershed/Planning Area Priorities
- Project Prioritization and Solicitation
 - Prioritization and Solicitation Approach
 - Overview of Project Submission Process
- Next Steps

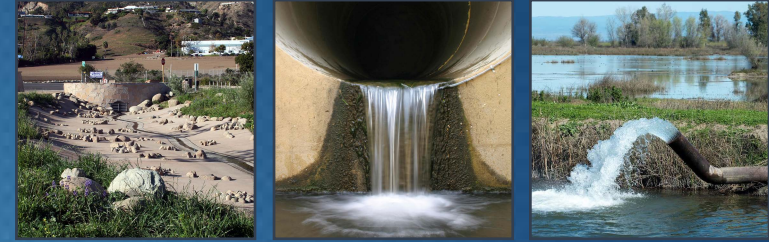




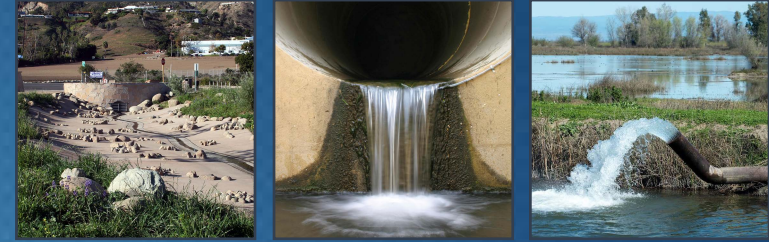
SWRP Overview

What is a SWRP?

Integrated plan focusing on regional watershed-based storm water priorities and developing multiple benefit projects for upcoming funding opportunities

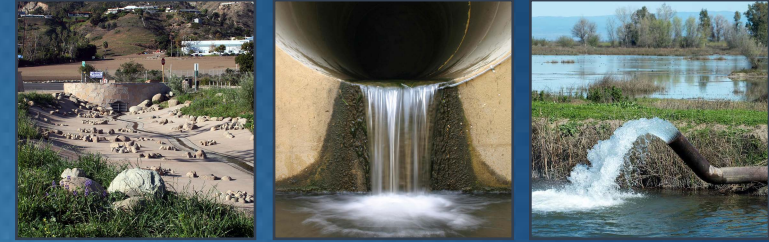


Stanislaus Multi-Agency Regional Storm Water Resource Plan



- Stanislaus County was awarded SWRCB Prop 1 grant funding to complete a Storm Water Resource Plan (SWRP) by July 2018
- This SWRP is required to receive state grant funding for storm water and dry weather runoff capture projects





Major SWRP Requirements

- Watershed/Planning Area Identification
- Water Quality Compliance
- Organization, Coordination, Collaboration
- Quantitative Methods
- Identification and Prioritization of Projects
- Implementation Strategy and Schedule
- Education, Outreach, Public Participation

Storm Water Resource Plan

Guidelines

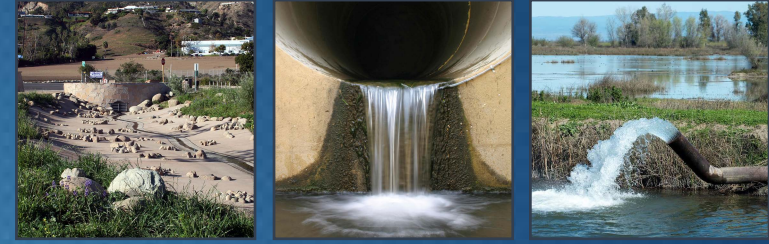


December 15, 2015

STATE WATER RESOURCES CONTROL BOARD
CALIFORNIA ENVIRONMENTAL PROTECTION AGENCY



Project Tasks



Task 1: Project Management

Task 2: Monitoring

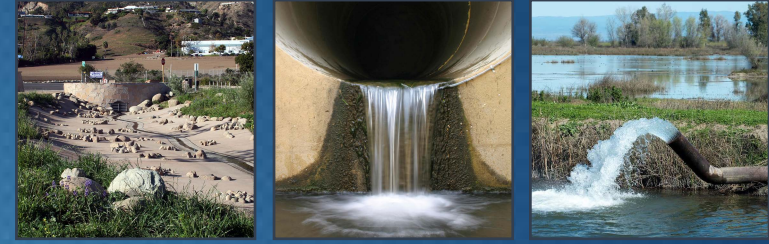
Task 3: Technical Advisory Committee

Task 4: Data Collection and Watershed Identification

Task 5: Storm Water Resource Plan Development

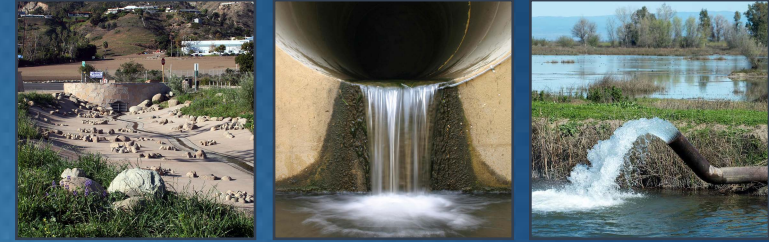
Task 6: Technical Studies to Support Development of SWRP

Task 7: Stakeholder Outreach, Education, and Public Participation



SWRP Schedule

Project Timeline



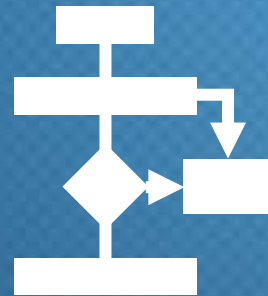
Anticipated funding solicitation



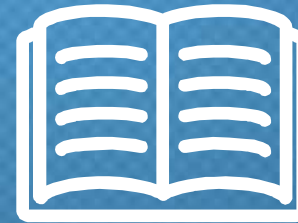
Establish TAC



Develop SWRP Components and Protocols



Solicit and Prioritize Projects



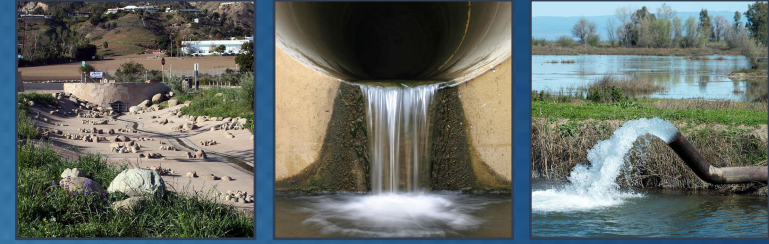
Draft Storm Water Resources Plan



Address Comments on Plan

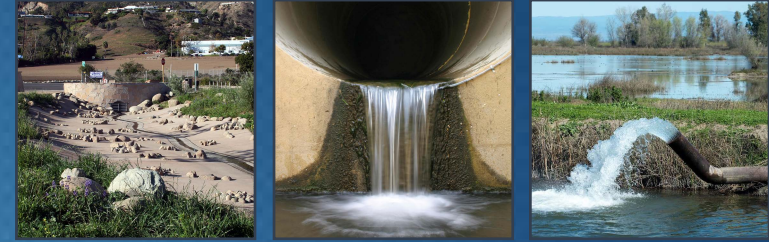


Final Storm Water Resources Plan

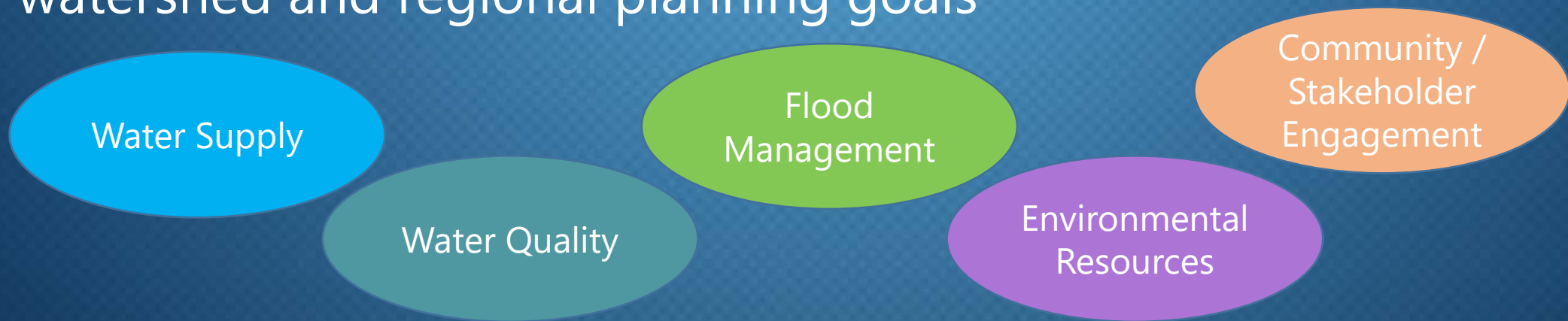


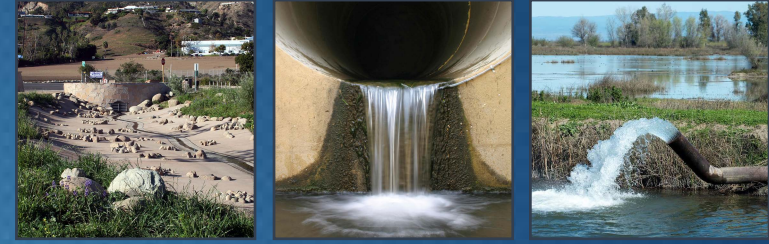
SWRP Goals/Objectives

Proposed SWRP Goals and Objectives



- Provide regional watershed-based planning to address challenges and opportunities for managing storm water and dry weather runoff
- Identify and prioritize storm water and dry weather runoff projects that provide multiple benefits to help achieve watershed and regional planning goals



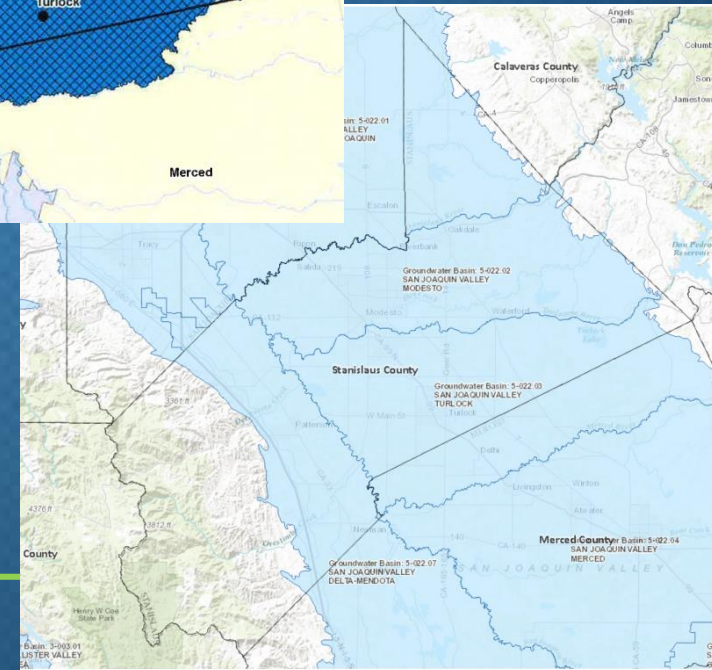
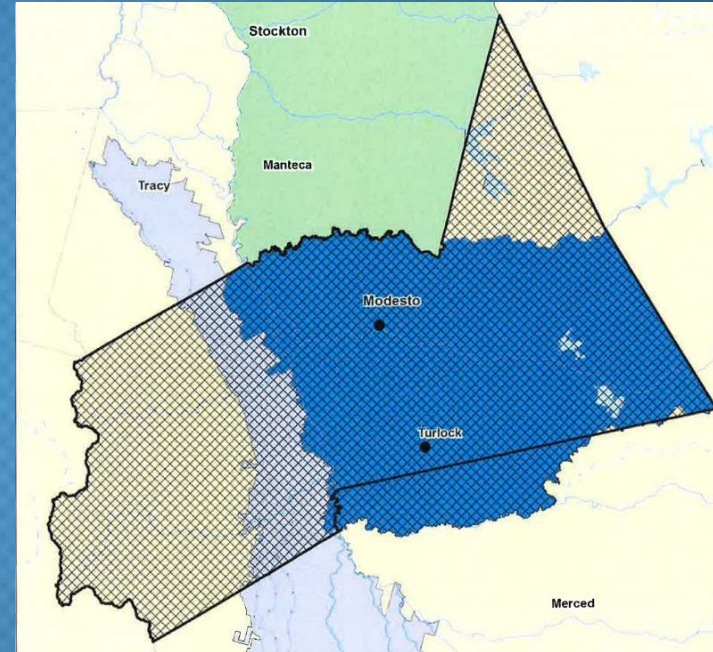
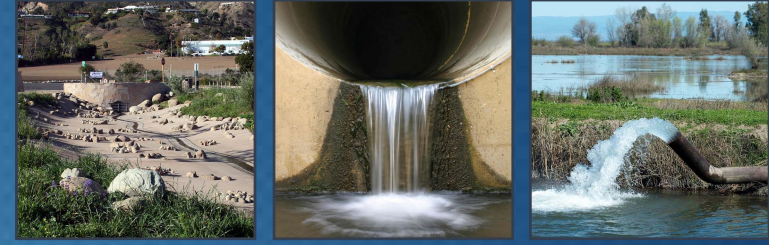


Watershed/Planning Area Identification

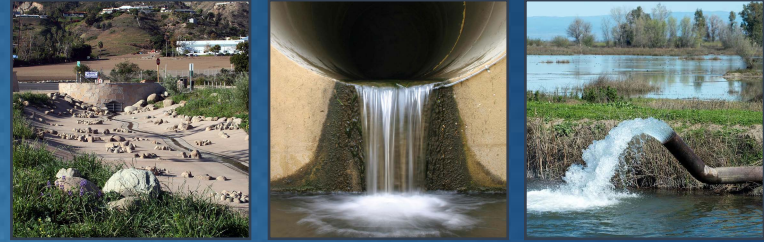
Watershed Identification

SWRP Planning Area: Stanislaus County

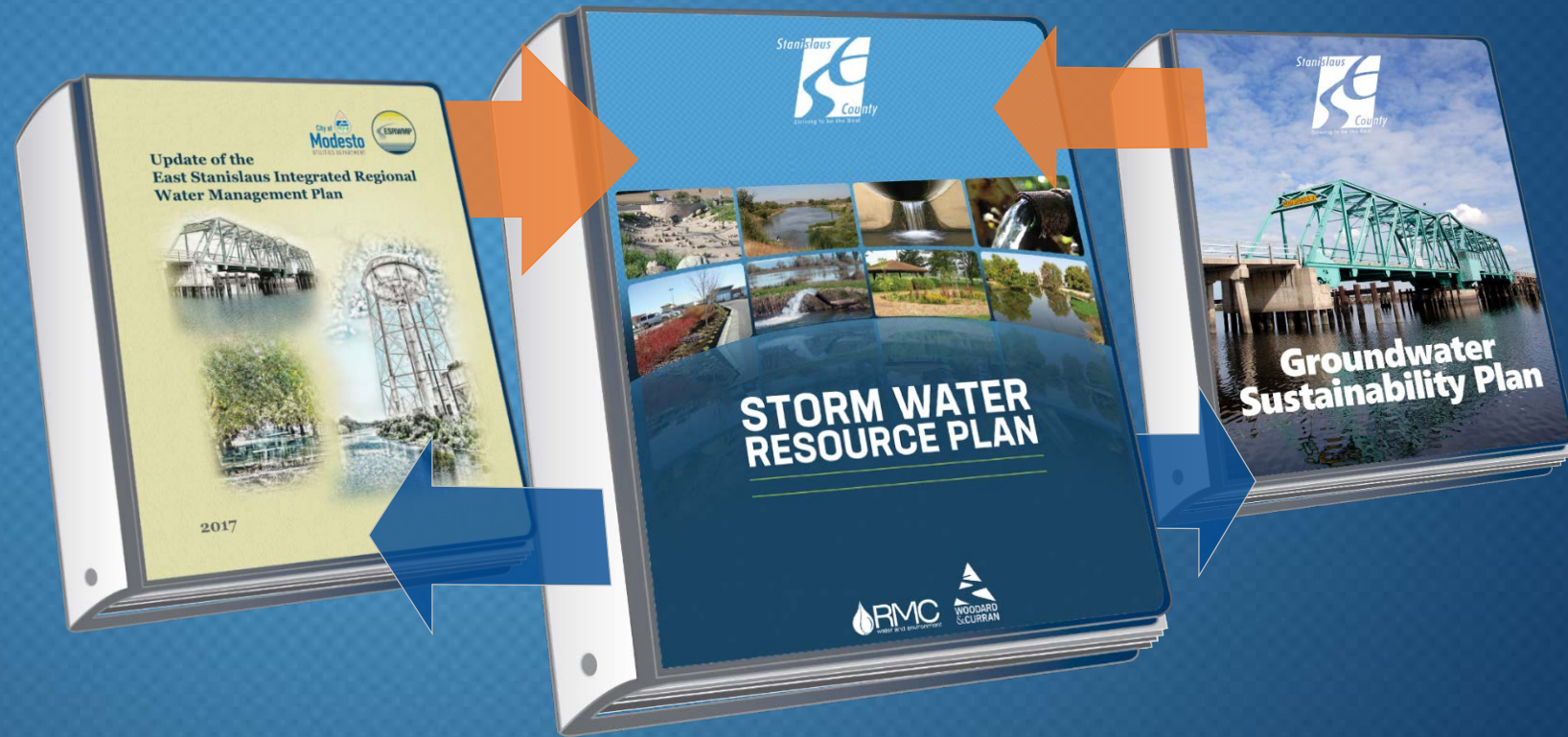
- East Stanislaus and Westside San Joaquin IRWMP areas
- Stanislaus and Tuolumne Rivers Groundwater Basin Association, Turlock Groundwater Basin Association, and San Luis & Delta-Mendota Water Authority groundwater management plan area



SWRP Planning Area: Stanislaus County

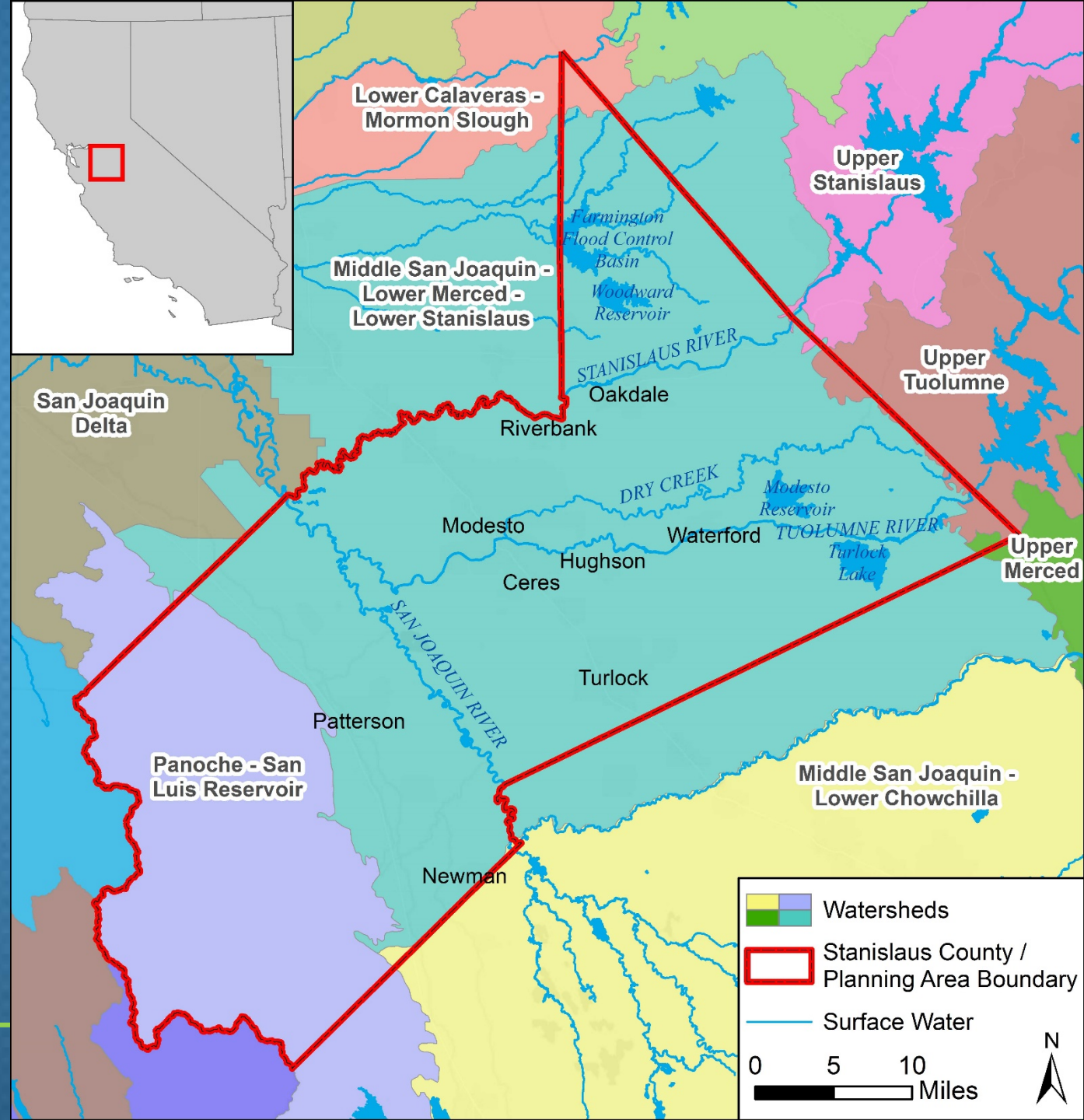


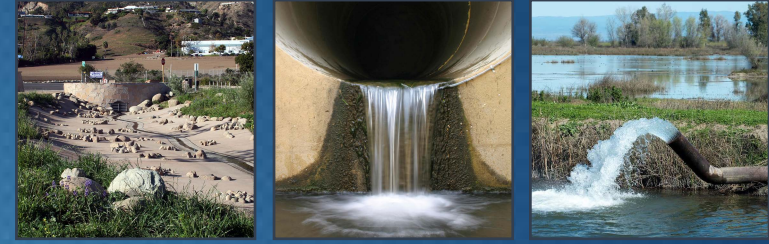
Coordination
between
concurrent water
resource planning
areas facilitates
effective regional
water planning



Watershed Identification

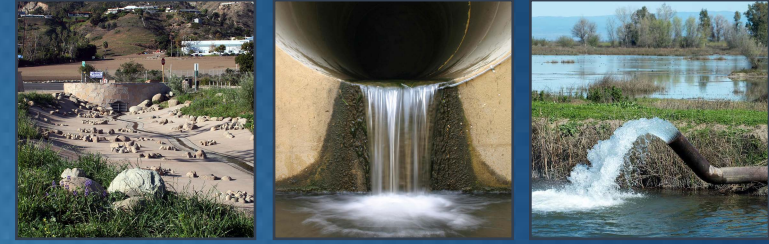
- Planning area: Stanislaus County
- 6 Watersheds
- Main Watersheds:
 1. Middle San Joaquin – Lower Merced – Lower Stanislaus
 2. Panoche – San Luis Reservoir
- Other Watersheds
 - Upper Tuolumne, Upper Stanislaus, Upper Merced, Lower Calaveras – Mormon Slough





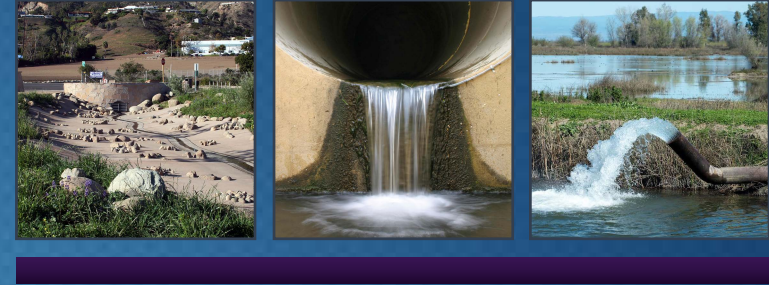
Watershed Priorities

Watershed Priorities: Water Resource Priorities

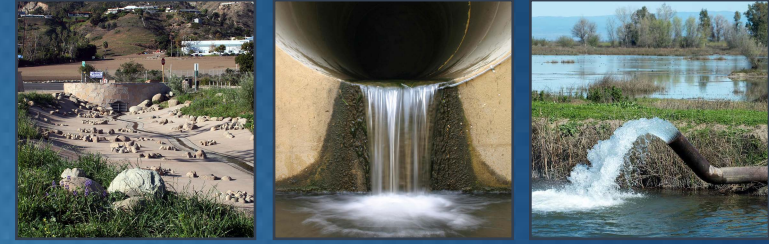


- Implement water quality improvements to support TMDL goals
- Reduce pollutant discharges into 303(d) listed impaired water bodies
- Augment water supply by capturing storm water or dry weather runoff for recharge into a groundwater basin (where feasible)
- Provide SWRP benefits to disadvantaged communities and economically distressed areas

Watershed Priorities: Water Quality

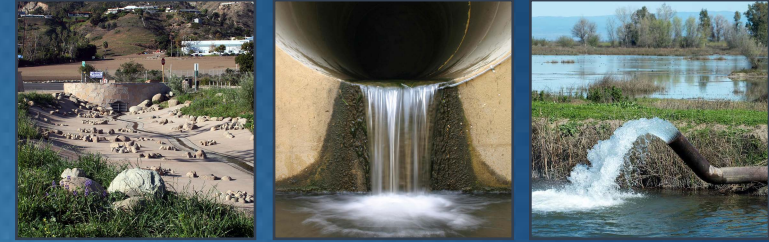


- Total Suspended Solids
- Mercury / Methylmercury
- Diazinon
- Chlorpyrifos
- Diuron
- Total Nitrogen



Project Solicitation and Prioritization

Project Timeline



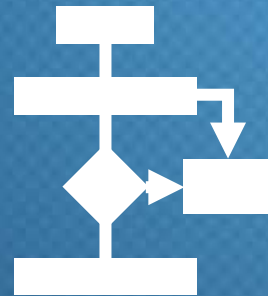
Anticipated funding solicitation



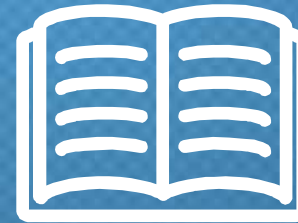
Establish TAC



Develop SWRP
Components
and Protocols



Solicit and
Prioritize
Projects



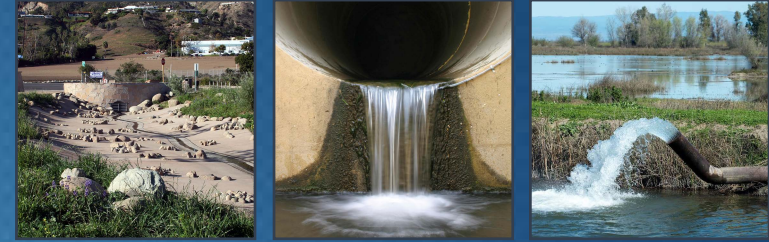
Draft Storm
Water
Resources
Plan



Address
Comments on
Plan



Final Storm
Water
Resources Plan



Project Solicitation

- Project Solicitation Period:
Oct 23 – Dec 8
- Utilizing Opti Data Management System
- Requesting same basic project info as ESIRWM
 - Location, description, status, etc.
- Requesting additional info specific to SWRP

Events

Time	Location	Event
Apr 25, 2016 1:00 pm to 4:00 pm	5620 Birdcage Street, Citrus Heights,	ARB IRWM Planning Forum Attachments: IRWMP_Meeting_Agenda_25APR16.doc
Feb 23, 2016 9:00 am to 3:30 pm	Sacramento Convention Center, 1400 J St, Room 202, Sacramento, CA, http://www.wate...	Dr. Wet of Average? The Challenges of Water Operations Attachments: feb_23_fires.pdf
Sep 18, 2013 10:00 am to 11:00 am	Webinar, http://water.ep...	Free EPA Webinar Series for Climate Ready Water Utilities Attachments: CRWU WUCA webinar flyer.pdf

Announcements

- May 22, 2015**
Projects Released for Stakeholder Vetting (Water Supply, Water Quality, Flood Management, Natural Resources and Watersheds, Stormwater)
23 new projects have been added to the ARB IRWM database. Any comments on the projects are requested by June 17, 2015. Send comments to Rob Swartz at rschwartz@wsh2o.org
Attachments: [ARB IRWM projects to vet 15mar15.pdf](#)
- Aug 15, 2014**
RWA Water Efficiency Program Revamps its Website (Water Supply, Water Quality, Flood Management, Natural Resources and Watersheds, Stormwater)
Get comprehensive information on regional water efficiency and the latest on conservation efforts in the current drought.
Website: <http://the.watermanad.info>
- Feb 21, 2014**
Sacramento County Recognized for Innovative Green Street Project (Water Supply, Water Quality, Flood Management, Natural Resources and Watersheds, Stormwater)

Map

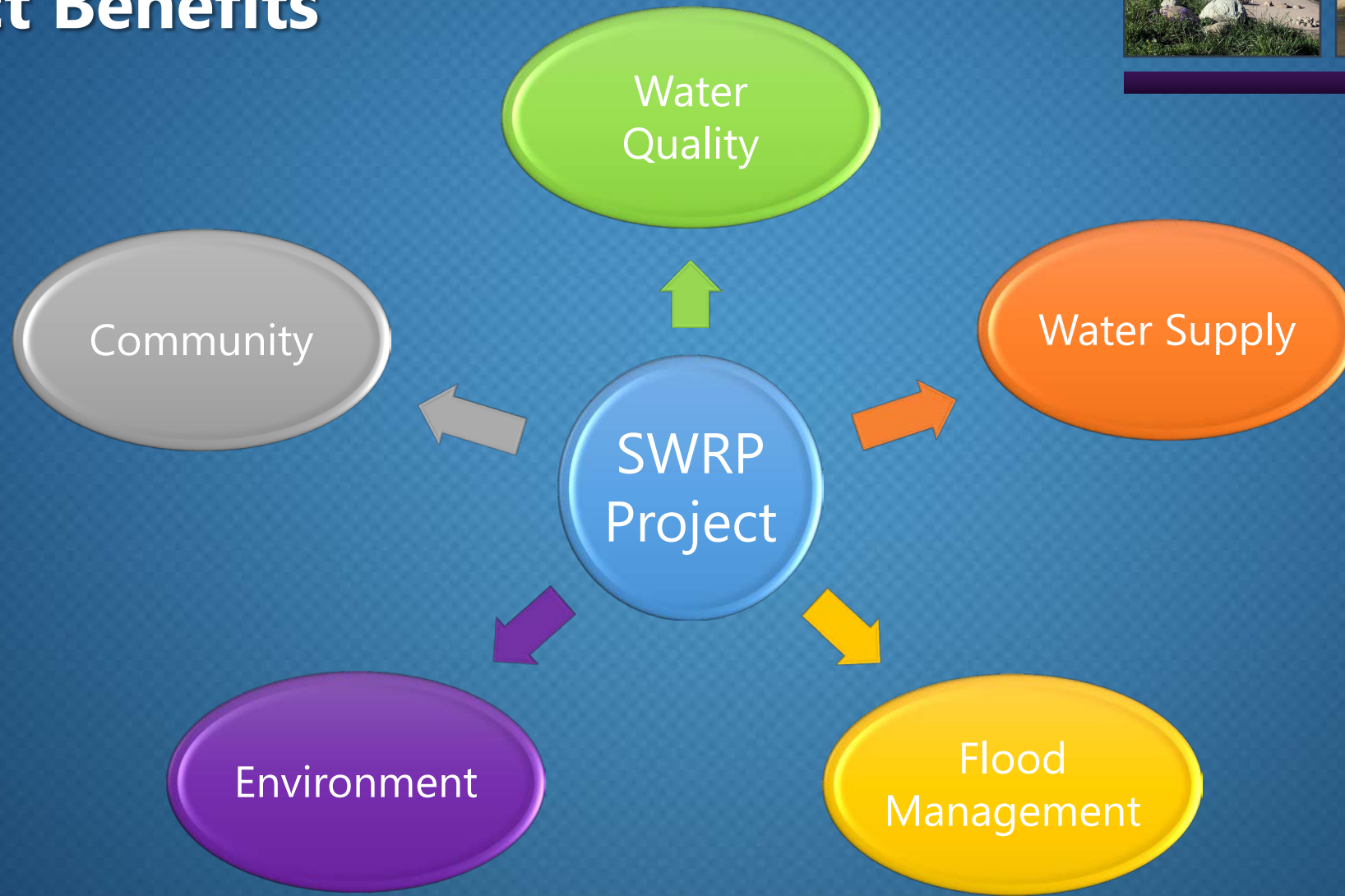
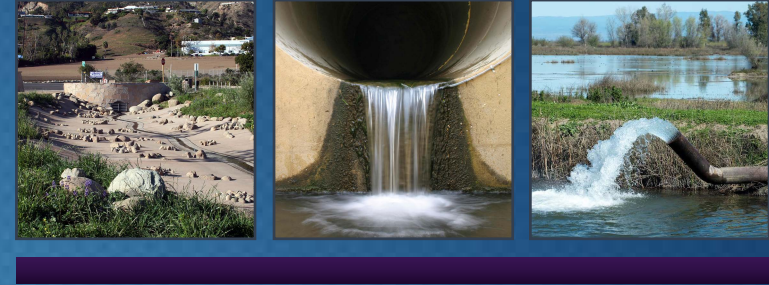
Recently Added / Updated Projects

- Capehart System Connecting Main**
Sacramento Suburban Water District
- Barrett Ranch East Well**
Sacramento Suburban Water District
- 2016 Meter Retrofit Project**
Sacramento Suburban Water District
- River Bend Park Water Supply Enhancement Project**
Sacramento County Department of Regional Parks
- Lower American River Berm Restoration**

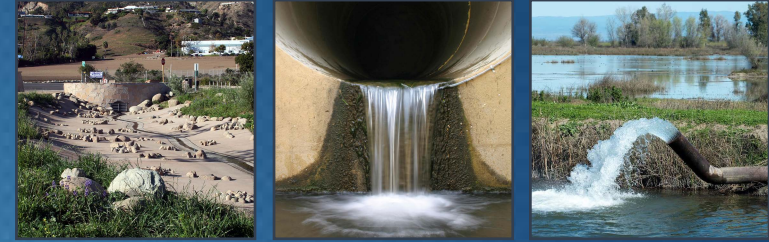
Contact Us

POWERED BY RMC

Project Benefits

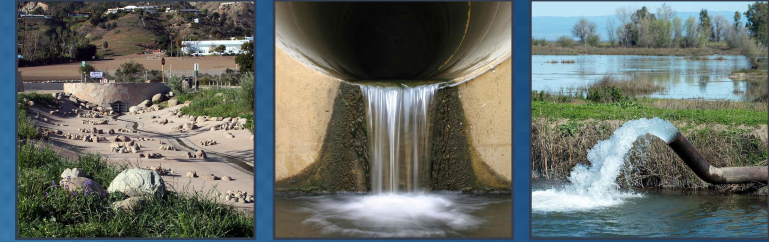


SWRP Main Benefits



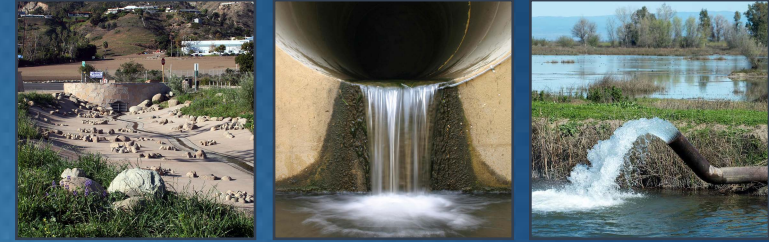
Benefit Category	Main Benefit
Water Quality	Increased filtration and/or treatment of water
Water Supply	Water supply reliability
	Conjunctive Use
Flood Management	Decreased flood risk by reducing runoff rate and/or volume
Environmental	Environmental habitat protection and/or improvement, including: <ul style="list-style-type: none"> - Wetland enhancement/creation; - Riparian enhancement; and/or Instream flow improvement
	Increased urban green space
	Community
	Public education

SWRP Additional Benefits



Benefit Category	Additional Benefit
Water Quality	Nonpoint source pollution control
	Reestablished natural water drainage and treatment
Water Supply	Water conservation
Flood Management	Reduced sanitary sewer overflows
Environmental	Reduced energy use, greenhouse gas emissions, or provides a carbon sink
	Reestablishment of natural hydrograph
	Water temperature improvements
Community	Community involvement
	Enhance and/or create recreational and public use areas

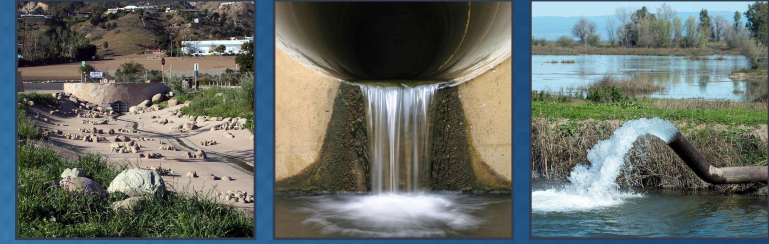
Project Prioritization



- *[A Storm Water Resource Plan] shall use measurable factors to identify, quantify, and prioritize potential storm water and dry weather runoff capture projects. (Wat. Code, § 10562, subd. (e).)*
- Project Eligibility (Fatal Flaw Analysis)
 - Each Project must meet **all** of the following:

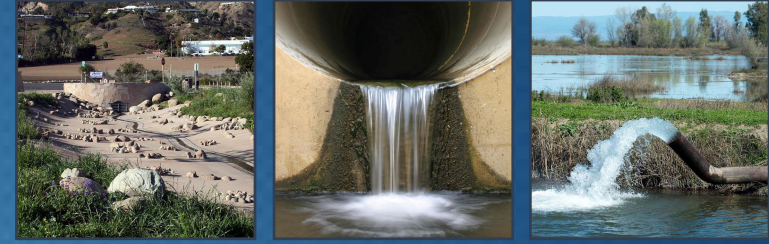
Can the project be sponsored by an eligible applicant?	Yes/No
Is the project a storm water or dry weather runoff project?	Yes/No
Does the project provide two or more SWRP Main Benefits?	Yes/No
Does the project provide at least one SWRP Additional Benefit?	Yes/No

Prioritization Guidance



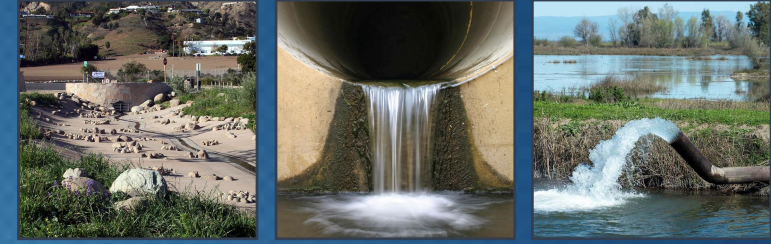
- Prioritize individual projects or programs that:
 - Are supported by entities that have created permanent, local, or regional funding
 - Use a metrics-driven approach and geospatial analysis of multiple benefits to maximize water supply, water quality, flood management, environmental, and community benefits within the watershed
 - Are located on public lands
 - Augment local water supplies
 - Preserve, restore, or enhance watershed processes (yield water quality benefits and support beneficial uses)
 - Create or restore habitat, open space, parks, recreation, or green open space in DACs with a deficit of such areas.

Project Prioritization Approach



- Eligible Projects receive credit for:
 - Providing SWRP Main Benefits and Additional Benefits
 - Addressing regional watershed priorities
 - Progress towards project implementation
- Projects are prioritized based on points awarded to each project

Project Prioritization Approach - SWRP Benefits

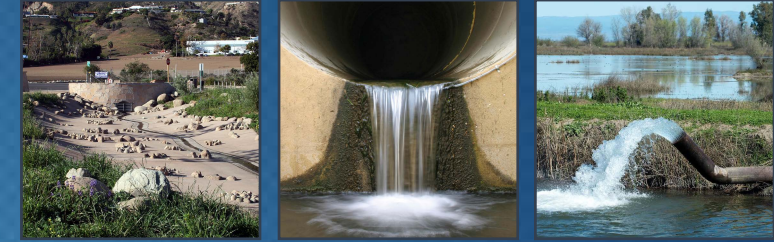


Providing SWRP Main Benefits and Additional Benefits	Points
SWRP Main Benefits	
Points per benefit provided	4
Additional points if a quantitative metric can be provided for that benefit	2
SWRP Additional Benefits	
Points per benefit provided	2
Additional points if a quantitative metric can be provided for that benefit	1

Main Benefits Scoring Example

Main Benefit	Benefit Provided?	Quantitative Metric Provided?	Points
Water Quality - Increased filtration and/or treatment of water	✓	✓	6
Water Supply - Water supply reliability			
Water Supply - Conjunctive Use			
Flood Management - Decreased flood risk by reducing runoff rate and/or volume			
Environmental - Environmental habitat and/or improvement			
Environmental - Instream flow improvement			
Environmental - Increased urban green space	✓	✓	6
Community - Employment opportunities provided			
Community - Public education	✓		4
Total Points:			16

Project Prioritization Approach - SWRP Benefits



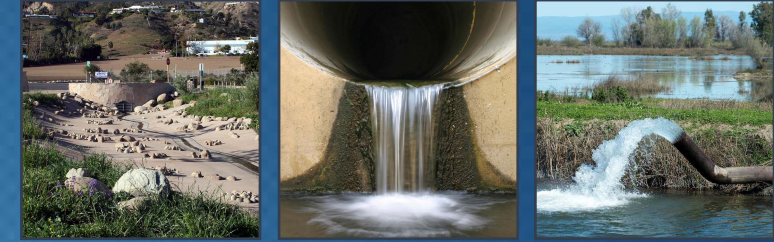
Providing SWRP Main Benefits and Additional Benefits	Points
SWRP Main Benefits	
Points per benefit provided	4
Additional points if a quantitative metric can be provided for that benefit	2
SWRP Additional Benefits	
Points per benefit provided	2
Additional points if a quantitative metric can be provided for that benefit	1



Additional Benefits Scoring Example

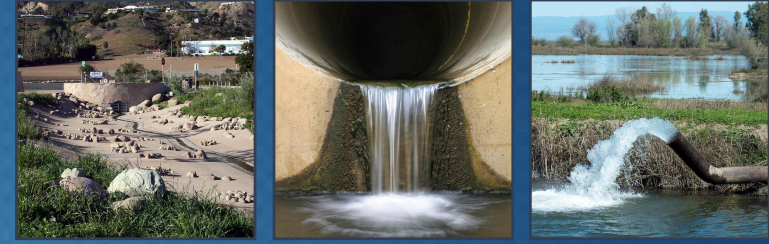
Additional Benefits	Benefit Provided?	Quantitative Metric Provided?	Points
Water Quality - Nonpoint source pollution control	✓	✓	3
Water Quality - Reestablished natural water drainage and treatment	✓		2
Water Supply - Water conservation			
Flood Management - Reduced sanitary sewer overflows			
Environmental - Reduced energy use, GHG emissions, or provides a carbon sink			
Environmental - Reestablishment of natural hydrograph			
Environmental - Water temperature improvements	✓		2
Community - Community involvement			
Community - Enhance and/or create recreational and public use areas			
Total Points:			7

Project Prioritization Approach - Regional Watershed Priorities and Progress Towards Implementation

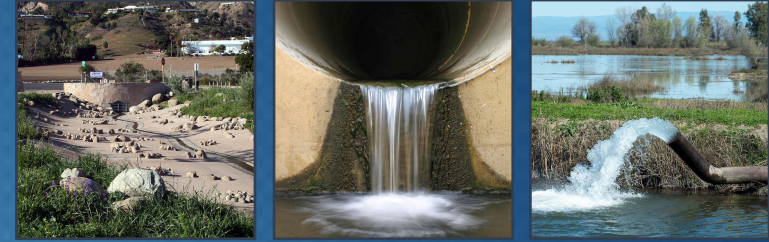


Addressing Regional Watershed Priorities	Points
Implements water quality improvements to help achieve the goals of an existing TMDL?	4
Reduces pollutant discharges into a 303(d) listed impaired water body?	2
Augments water supply by capturing storm water or dry weather runoff for recharge into a groundwater basin?	4
Does the project provide a SWRP Main or Additional Benefit to a disadvantaged community or an economically distressed area?	4

Progress Towards Project Implementation	Points
Is the project supported by entities that have created permanent, local or regional funding?	4
Is the project located on public land? If not, is there an existing easement or right of way agreement with a local land owner?	4
Readiness of project to proceed (award points for each one completed):	
Planning Study or Feasibility Study	1
Environmental Assessment/EIR	1
Preliminary Project Design	2
Acquisition of all required environmental permits	2



Overview of Project Submission Process



How Do I Submit a Project?

www.eaststanirwm.org/projects

Home About Projects Documents Regional Map Contact Links Participation

HOME > PROJECTS

Projects

The East Stanislaus Region currently has 39 projects listed in the IRWM Plan database. The projects are reviewed and scored according to the Goals and Objectives criteria established for the Region. These submitted projects can be viewed in the OPTI Project Website. As part of the 2017 Plan update, the Region will be updating the project database.

The DWR schedule for the Prop 1 Implementation Grant Applications is expected to be due in spring 2018 with release of the Draft Guidelines and Proposal Solicitation Package (PSP) in Autumn 2017. An Implementation Grant would provide competitive-based funding to construct qualified projects within the IRWM Region for projects included in the IRWM Plan. With completion and approval of the East Stanislaus 2017 IRWM Plan Update set for early 2018, our Region would be eligible to apply for these grant funds.

If you are a stakeholder and have not signed up for OPTI, the Region's Online Project Tracking and Integration program, please click OPTI to request membership. The Region is planning to open the OPTI database for new projects and update of existing projects from August 7 through mid-September of 2017.


[Click to enter the OPTI website.](#) ←

The East Stanislaus IRWM Goals and Objectives can be found in the documents tab or [click here](#)

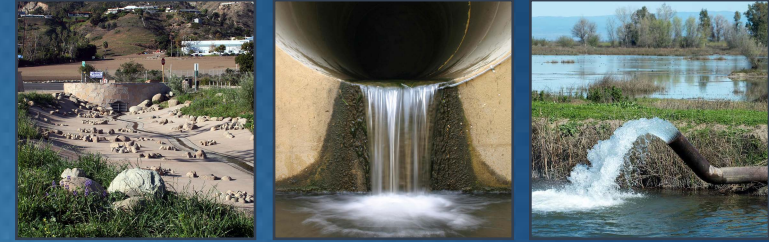
What's New

- Public Draft IRWMP Notice
- Draft IRWM Plan Public Release
- Regional Flood Management Plan

Local Agencies and Stakeholders



Create an OPTI Account

A screenshot of a web browser showing the login and registration page for the East Stanislaus Regional Water Management Partnership. The page features the OPTI logo, a navigation bar with the partnership name and ESRWMP logo, and two main sections: 'Existing Users' with login fields and a 'Forgot your password?' link, and 'Sign up for opti' with fields for First Name, Last Name, Email Address, Password, and Confirm Password, along with a 'Register' button. A map of California with network icons is on the left, and a 'Contact Us' link is at the bottom left. The footer includes 'POWERED BY RMC' and logos for RMC and Woodward & Curran.

← → C Not secure | irwm.rmcwater.com/es/login.php ☆ ⋮

opti East Stanislaus Regional Water Management Partnership ESRWMP

opti helps you locate, connect, share, and integrate the projects that affect our environment.

Existing Users

Username / Email Password Login

[Forgot your password?](#)

Sign up for opti

First Name * Last Name *

Email Address *

Password * Confirm Password *

Register

* All fields are required

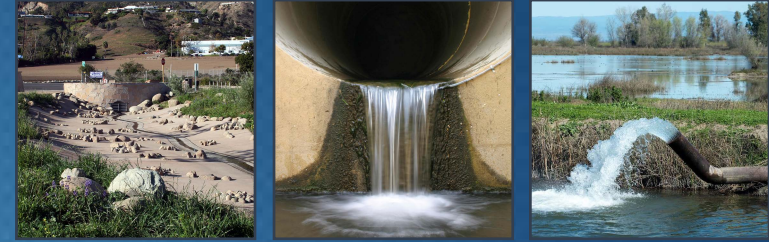
Contact Us

POWERED BY RMC

- Sign Up
- An administrator will approve your account

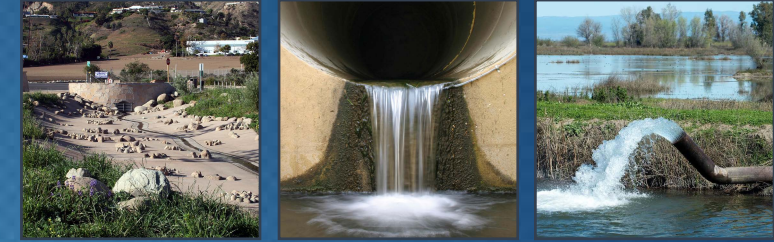
Submitting a Project

- Enter OPTI System: Projects > Add



The screenshot displays the OPTI system interface. At the top left is the 'opti' logo. The navigation bar includes icons for Admin, Home, Projects (circled in red), Community, Search, Profile, and Logout. Below this is a secondary menu with 'Map', 'List', 'Add' (highlighted with a red box), and 'Share'. The main area features a satellite map of California with various project markers in different colors. On the right side, there is a sidebar with 'Filters', 'Layers', and 'Tools' tabs. Under 'Results (39)', there are checkboxes for 'My Projects', 'Shared Projects', 'Like Projects', and 'Other Projects'. Below this is a 'Primary Benefit' section with color-coded boxes for 'Water Supply' (cyan), 'Water Quality' (green), 'Environment' (orange), 'Flood/Stormwater Management' (yellow), and 'Community Stewardship' (red). There are also buttons for 'Filter By Type' and 'Filter By Approval'. At the bottom left is a 'Contact Us' button, and at the bottom right is the 'POWERED BY RMC' logo.

Navigating in OPTI



Add Project

ESIRWM Instructions | Project Info | ESIRWM Requirements | Contact | Description | ESIRWM Benefits | Feasibility | Cost/Funding | Other Considerations | SWRP Eligibility

SWRP Benefits

The East Stanislaus Integrated Regional Water Management (IRWM) Planning Region is an official IRWM planning region approved by the California Department of Water Resources (DWR). The Cities of Modesto, Turlock, Ceres, Hughson, and Waterford, and Stanislaus County executed a Memorandum of Understanding (MOU) to participate as members of the East Stanislaus Regional Water Management Partnership (ESRWMP), the Regional Water Management Group for the Region, and have initiated an update of the 2013 East Stanislaus Integrated Regional Water Management Plan (IRWMP). We are seeking projects to be included in the 2017 East Stanislaus IRWMP.

If you have a project that you would like to be included in the 2017 East Stanislaus IRWMP, please complete the following project information form (either in hard copy or electronically online at <http://www.eaststanirwm.org/projects>). Project information can be submitted electronically through the ESRWMP IRWM Project Database (OPTI) at the web address above. If you do not have internet access, please mail or hand-deliver one copy of your application to:

Jim Alves
City of Modesto Public Works Department
1010 Tenth Street, Suite 4600
P.O. Box 642
Modesto, CA 95353

For consideration and inclusion in the East Stanislaus IRWMP, project information forms MUST BE submitted by 5:00 PM on September 15, 2017.

Instructions

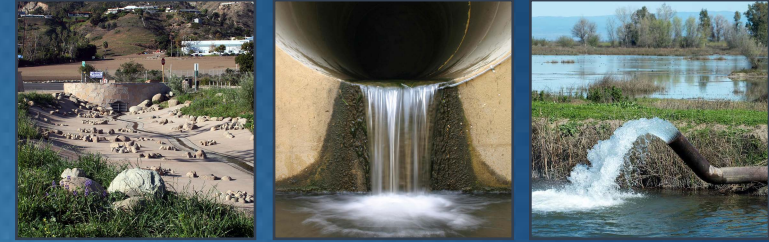
Projects submitted for consideration will be separated into three categories: Concept Projects, Preliminary Design Complete, and Ready-to-Proceed (RTP) Projects. RTP Projects consist of projects that are ready or close to being ready for implementation. They can be construction projects, research projects, or studies, but must be developed enough to have detailed budget and schedule information available and most planning, design and environmental documentation (if required) must be complete. Concept Projects are projects that are at a conceptual level and require additional project development before being implementation-ready. Preliminary Design Complete projects are further developed than the Concept Projects, but not yet ready for implementation. Concept Projects, Preliminary Design Complete projects, and RTP Projects will be included in the IRWMP, but Concept Projects will not be considered for inclusion in applications for funding through DWRs IRWM Grant Program.

Important Items to Note Regarding Future Grant Funding

- This project solicitation process is for the purpose of compiling projects to be included in the East Stanislaus IRWMP, not for the purpose of applying to DWR for IRWM grant funding at this time.
- Per DWR's IRWM Guidelines, all project proponents with projects included in an IRWM grant application must adopt the IRWM Plan.
- At this time, DWR anticipates having an IRWM Implementation Grant solicitation in early 2018. In order to be eligible for grant funding, the East Stanislaus IRWMP must be reviewed and approved by DWR through the Plan Review Process (PRP). In order for projects to be eligible for funding, they must be included in the adopted IRWMP.
- Submitting your project for consideration for inclusion in the East Stanislaus IRWMP now will make it eligible for future IRWM grant cycles. However, inclusion of your project in the IRWMP will not guarantee that it is included in a grant application.

Save | Submit | Preview * Minimum Required Information for Project Submission

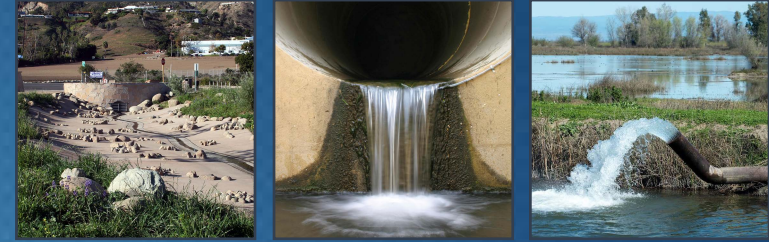
OPTI Data Entry Tabs



SWRP-Specific Tabs	General Tabs	ESIRWM-Specific Tabs
Complete for all projects submitted for SWRP	Complete for all projects submitted for SWRP	Complete ONLY if project is within the ESIRWM region
<ul style="list-style-type: none"> - SWRP Eligibility - SWRP Benefits 	<ul style="list-style-type: none"> - Project Info - Contact - Description - Feasibility - Cost/Funding - Other Considerations 	<ul style="list-style-type: none"> - ESIRWM Instructions - ESIRWM Requirements - ESIRWM Benefits

OPTI: SWRP Eligibility Tab

Project Eligibility



Add Project

ESIRWM Instructions | Project Info | ESIRWM Requirements | Contact | Description | **ESIRWM Benefits** | Feasibility | Cost/Funding | Other Considerations | SWRP Eligibility

SWRP Benefits

Project Eligibility

SWRP Project Submission Instructions

In April 2017, Stanislaus County was awarded a Prop 1 storm water planning grant from the State Water Resources Control Board. Representatives from the County and local municipalities, agencies, and non-profit groups are now collaborating to develop the Stanislaus Multi-Agency Regional Storm Water Resource Plan (SWRP) encompassing all watersheds within the County. The primary purpose of the SWRP is to identify and assess projects that promote storm water as a resource, prioritizing those multi-benefit projects that can best meet the identified planning area and watershed priorities. As all storm water and dry weather runoff capture projects must now be included in a SWRP to be eligible for state grant funding, the SWRP will be completed by July 2018, in time for projects included in the plan to be eligible to apply for upcoming funding opportunities.

If you have a project to be included in the SWRP, please complete the project information form and submit click the submit button. For projects that are within the East Stanislaus IRWM region, please complete all of the project information tabs. Projects that are not located within the East Stanislaus IRWM region should complete all of the tabs except for the ESIRWM Instructions, Requirements, and Benefits tabs.

[Additional information on how to enter and submit a SWRP project in Opti.](#)
[Information on the project prioritization criteria that will be used by the SWRP.](#)

Each Project must meet all of the following to be included in the SWRP.

Can the project be sponsored by an eligible applicant? No Yes ?

Is the project a storm water or dry weather runoff project? No Yes ?

Does the project meet 2 or more of the following SWRP main benefits? No Yes

- Water Quality - Increased filtration and/or treatment of runoff
- Water Supply - Water supply reliability
- Water Supply - Conjunctive use
- Flood Management - Decreased flood risk by reducing runoff rate and/or volume
- Environmental - Environmental and habitat protection and/or improvement

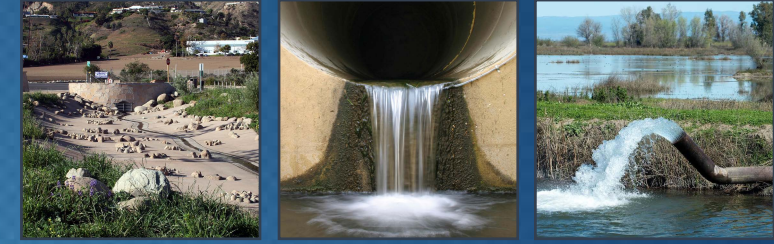
Save | Submit | Preview * Minimum Required Information for Project Submission

Prerequisite for inclusion in SWRP

- ✓ Eligible applicant
- ✓ Stormwater/dry weather runoff project
- ✓ Meet 2 or more Main SWRP Benefits
- ✓ Meet 1 Additional Benefit

OPTI: SWRP Eligibility Tab

Regional Watershed Priorities



Add Project

ESIRWM Instructions | Project Info | ESIRWM Requirements | Contact | Description | ESIRWM Benefits | Feasibility | Cost/Funding | Other Considerations | **SWRP Eligibility**

SWRP Benefits

- Community - Community involvement
- Community - Enhance and/or create recreational and public use areas

Stanislaus Multi-Agency Regional Watershed Priorities

Does the Project implement water quality improvements to help achieve the goals of an existing TMDL? (check all that apply)

- Sacramento-San Joaquin Delta Methylmercury TMDL
- Sacramento-San Joaquin Delta Diazinon and Chlorpyrifos TMDL
- San Joaquin River Dissolved Oxygen TMDL (Stockton Deep Water Ship Channel)
- Central Valley Pesticide TMDL

Does the project reduce pollutant discharges into a 303(d) listed Impaired Water Body? No Yes

If yes, please list water body:

Does the project augment water supply by capturing storm water for recharging into a groundwater basin? No Yes

Does the Project provide a SWRP Main or Additional Benefit to a disadvantaged community or economically distressed area? No Yes

If yes, please list communities:

Progress Towards Project Implementation

Is the project supported by entities that have created permanent, local or regional funding? No Yes

Is the project located on public land? No Yes

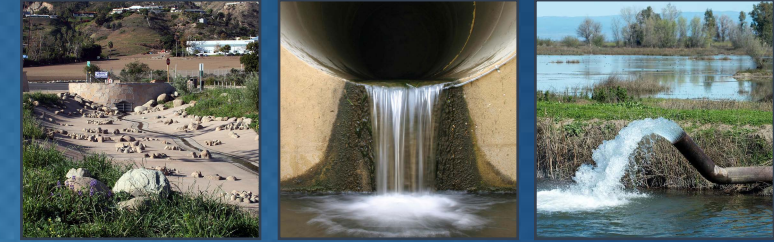
If not, does the project have an easement or right of way agreement with a local land owner? No Yes

Save | Submit | Preview * Minimum Required Information for Project Submission

- Does the project...
 - Help meet a TMDL goal?
 - Reduce pollutant discharges to 303(d) listed water body?
 - Augment water supply through groundwater recharge?
 - Benefit a DAC or EDA?

OPTI: SWRP Eligibility Tab

Progress Toward Project Implementation



Add Project

ESIRWM Instructions | Project Info | ESIRWM Requirements | Contact | Description | ESIRWM Benefits | Feasibility | Cost/Funding | Other Considerations | **SWRP Eligibility**

SWRP Benefits

- Community - Community involvement
- Community - Enhance and/or create recreational and public use areas

Stanislaus Multi-Agency Regional Watershed Priorities

Does the Project implement water quality improvements to help achieve the goals of an existing TMDL? (check all that apply)

- Sacramento-San Joaquin Delta Methylmercury TMDL
- Sacramento-San Joaquin Delta Diazinon and Chlorpyrifos TMDL
- San Joaquin River Dissolved Oxygen TMDL (Stockton Deep Water Ship Channel)
- Central Valley Pesticide TMDL

Does the project reduce pollutant discharges into a 303(d) listed Impaired Water Body? No Yes

If yes, please list water body:

Does the project augment water supply by capturing storm water for recharging into a groundwater basin? No Yes

Does the Project provide a SWRP Main or Additional Benefit to a disadvantaged community or economically distressed area? No Yes

If yes, please list communities:

Progress Towards Project Implementation

Is the project supported by entities that have created permanent, local or regional funding? No Yes

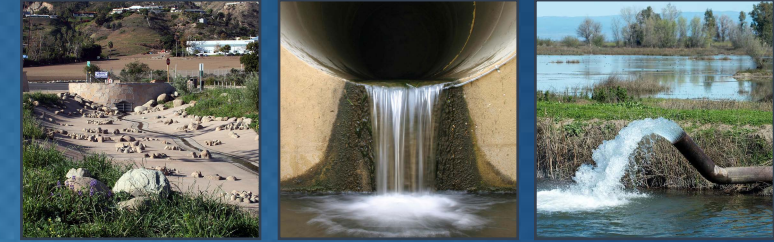
Is the project located on public land? No Yes

If not, does the project have an easement or right of way agreement with a local land owner? No Yes

Save | Submit | Preview | * Minimum Required Information for Project Submission

- Project supported with permanent, local, or regional funding?
- Located on public land, or is a easement or right-of-way agreement in place?

OPTI: SWRP Benefits Tab



Add Project

ESIRWM Instructions | Project Info | ESIRWM Requirements | Contact | Description | ESIRWM Benefits | Feasibility | Cost/Funding | Other Considerations | SWRP Eligibility

SWRP Benefits

Water Quality Benefits

Does the project provide any of the following benefits (check all that apply and provide applicable quantitative estimate, if available):

Increased filtration and/or treatment of runoff (SWRP Main Benefit)

Average annual pollutant load reduction:

TSS (lbs/yr)

Mercury (lbs/yr)

Diazinon (lbs/yr)

Chlorpyrifos (lbs/yr)

Selenium (lbs/yr)

Diuron (lbs/yr)

bacteria - fecal coli. / E. coli (MPN/yr)

pyrethroids (lb/yr)

trash (lb/yr)

Total Nitrogen (lb/yr)

Other constituent

Volume of water treated (mgd)

Volume of runoff infiltrated (af/year)

Other quantitative metric

Nonpoint source pollution control (SWRP Additional Benefit)

Provide quantitative metric

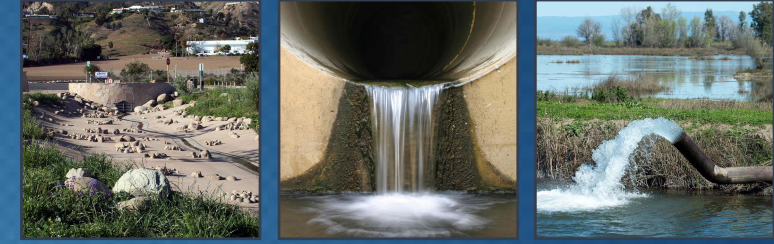
Reestablished natural water drainage and treatment (SWRP Additional Benefit)

Provide quantitative metric

Save | Submit | Preview * Minimum Required Information for Project Submission

- Benefit categories:
 - Water Quality
 - Water Supply
 - Flood Management
 - Environment
 - Community

OPTI: SWRP Benefits Tab



Add Project

ESIRWM Instructions | Project Info | ESIRWM Requirements | Contact | Description | ESIRWM Benefits | Feasibility | Cost/Funding | Other Considerations | SWRP Eligibility

SWRP Benefits

Water Quality Benefits

Does the project provide any of the following benefits (check all that apply and provide applicable quantitative estimate, if available):

Increased filtration and/or treatment of runoff (SWRP Main Benefit)

Average annual pollutant load reduction:

TSS (lbs/yr)

Mercury (lbs/yr)

Diazinon (lbs/yr)

Chlorpyrifos (lbs/yr)

Selenium (lbs/yr)

Diuron (lbs/yr)

bacteria - fecal coli. / E. coli (MPN/yr)

pyrethroids (lb/yr)

trash (lb/yr)

Total Nitrogen (lb/yr)

Other constituent

Volume of water treated (mgd)

Volume of runoff infiltrated (af/year)

Other quantitative metric

Nonpoint source pollution control (SWRP Additional Benefit)

Provide quantitative metric

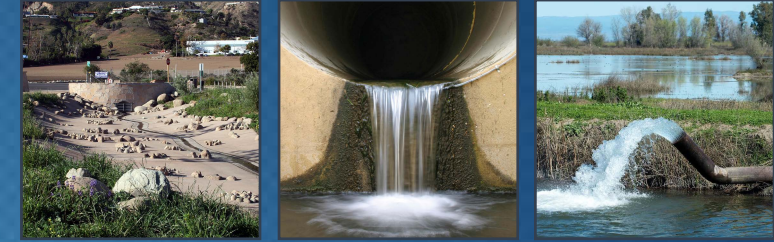
Reestablished natural water drainage and treatment (SWRP Additional Benefit)

Provide quantitative metric

Save | Submit | Preview * Minimum Required Information for Project Submission

- Indicate benefits achieved
- Provide quantitative metrics
- Describe how benefits will be achieved
- Describe method used to quantify benefits

OPTI: Project Info Tab



Add Project

ESIRWM Instructions | Project Info | ESIRWM Requirements | Contact | Description | ESIRWM Benefits | Feasibility | Cost/Funding | Other Considerations | SWRP Eligibility

SWRP Benefits

Project Info

Select the Program(s) for which you would like to enter your project (select IRWM, SWRP, or both):

East Stanislaus Integrated Regional Water Management Program: Any project that would like to be considered for IRWM funding should select this program. Projects must meet at least one IRWM Plan Objective, one Resource Management Strategy, one Statewide Objective, and must be technically feasible in order to be considered for inclusion in the Plan and to be considered for IRWM funding. For more information about the IRWM grant program visit the California Department of Water Resources' website.

Stanislaus County Multi-Agency Storm Water Resource Plan: All storm water and dry weather runoff capture projects (e.g., Green Infrastructure, Rainwater and storm water capture, Storm water treatment facilities, and Demonstration or pilot projects that are consistent with the eligibility requirements of Prop 1, Chapter 7) should select this program, regardless of whether they are seeking IRWM or Storm Water grant funding. Inclusion in the Storm Water Resource Plan is required for storm water and dry weather runoff capture projects seeking Proposition 1 funding. For more information about the Storm Water Grant Program visit the State Water Resources Control Boards website.

Project Name: *

Organization: *

Project Location

Project Coordinates: Enter decimal latitude and longitude below or [Find My Location](#).

Latitude: * Longitude: *

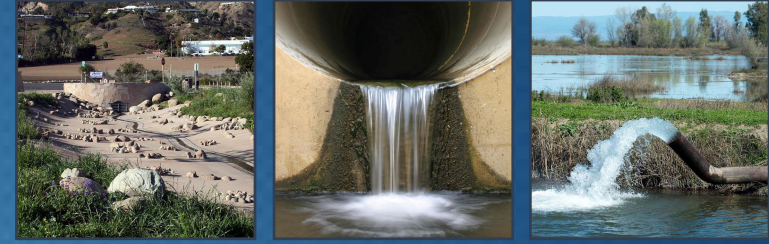
Project Area: [Draw or Add a Project Boundary](#)

File Name	Type

Save | Submit | Preview * Minimum Required Information for Project Submission

- Select SWRP/IRWMP
- Select IRWMP Region (if needed)
- Project Name
- Organization
- Location (input lat/long, draw boundary in OPTI, or upload shapefile)

OPTI: Contact Tab



- Provide information for a primary and secondary contact

Add Project

ESIRWM Instructions | Project Info | ESIRWM Requirements | **Contact** | Description | ESIRWM Benefits | Feasibility | Cost/Funding | Other Considerations | SWRP Eligibility

SWRP Benefits

Primary Contact

Name: *

Agency/Organization: *

Title: *

Email Address: *

Phone Number: * Ext:

Secondary Contact

Name:

Agency/Organization:

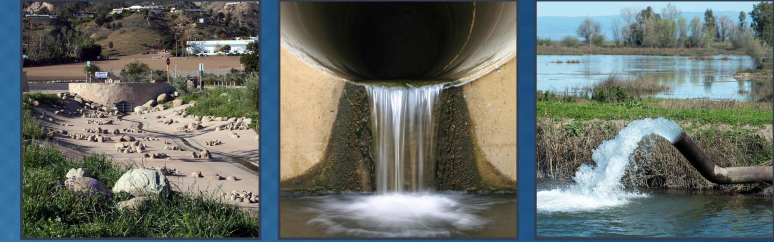
Title:

Email Address:

Phone Number: Ext:

Save | Submit | Preview * Minimum Required Information for Project Submission

OPTI: Description Tab



Add Project

ESIRWM Instructions | Project Info | ESIRWM Requirements | Contact | Description | ESIRWM Benefits | Feasibility | Cost/Funding | Other Considerations | SWRP Eligibility

SWRP Benefits

Description

Project Category*

Project Type*

Project Description:*

(1000 characters remaining)

Pilot/Demonstration Project: No Yes

If yes, please explain:

Project Status (% complete):

Project Partners:

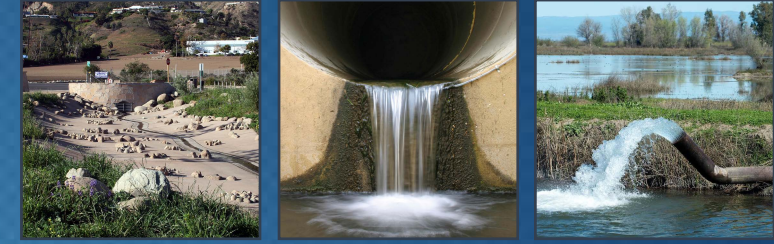
Please list any project partners and their role in the project.

Other Stakeholders

* Minimum Required Information for Project Submission

- Select project category
- Select project type
- Describe project
- % complete
- Add project partners and stakeholder information

OPTI: Feasibility Tab



Add Project

ESIRWM Instructions | Project Info | ESIRWM Requirements | Contact | Description | ESIRWM Benefits | Feasibility | Cost/Funding | Other Considerations | SWRP Eligibility

SWRP Benefits

Project Status

Project Start Date:

Complete all Sections:

Planning:	<input type="text" value="Select"/>	Estimated Completion:	<input type="text"/>
Feasibility Study:	<input type="text" value="Select"/>	Estimated Completion:	<input type="text"/>
Environmental Documentation:	<input type="text" value="Select"/>	Estimated Completion:	<input type="text"/>
Pre-Project Monitoring:	<input type="text" value="Select"/>	Estimated Completion:	<input type="text"/>
Design:	<input type="text" value="Select"/>	Estimated Completion:	<input type="text"/>
Environmental Permits *:	<input type="text" value="Select"/>	Estimated Completion:	<input type="text"/>
Building/Other Permits:	<input type="text" value="Select"/>	Estimated Completion:	<input type="text"/>
Construction/Implementation:	<input type="text" value="Select"/>	Estimated Completion:	<input type="text"/>
Post Project Monitoring:	<input type="text" value="Select"/>	Estimated Completion:	<input type="text"/>

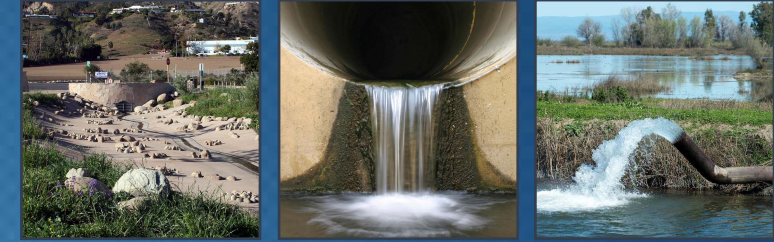
*Describe Environmental Permits Required for the Project:

(350 characters remaining)

Save | Submit | Preview * Minimum Required Information for Project Submission

- Planning, environmental documentation, design, permitting
- Select status
- Enter estimated year of completion
- Describe environmental permits needed

OPTI: Cost/Funding Tab



Add Project

ESIRWM Instructions | Project Info | ESIRWM Requirements | Contact | Description | ESIRWM Benefits | Feasibility | Cost/Funding | Other Considerations | SWRP Eligibility

SWRP Benefits

Project Funding

Year Basis for Estimates (2017?):

Total Estimated Capital Cost:

Estimated Annual O&M Cost:

Estimated Life of Project:

Replacement Part:

Estimated Replacement Cost:

Year of Replacement:

Replacement Part:

Estimated Replacement Cost:

Year of Replacement:

Replacement Part:

Estimated Replacement Cost:

Year of Replacement:

Total Estimated Project Cost:

Local Funding:

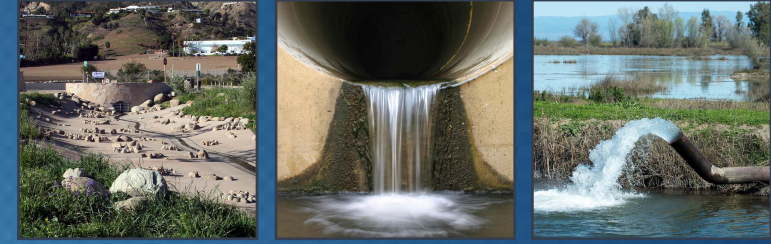
Source of Local Funding:

Total Cost Funding through Existing Grants:

Save | Submit | Preview * Minimum Required Information for Project Submission

- Capital cost
- O&M cost
- Major replacement parts
- Funding status
 - Local funding secured
 - Other grants secured
 - Unfunded costs
- Cost breakdown by category

OPTI: Other Considerations Tab



Add Project

ESIRWM Instructions | Project Info | ESIRWM Requirements | Contact | Description | ESIRWM Benefits | Feasibility | Cost/Funding | Other Considerations | SWRP Eligibility

SWRP Benefits

Disadvantaged Communities (DAC) and Economically Distressed Areas (EDAs)

A DAC is a community with an annual median household income that is less than 80% of the Statewide annual median household income. An EDA is a community that is reasonably isolated from a larger municipality with an annual median household income that is less than 85% of the Statewide annual median household income, and also has either a low population density, or an unemployment rate at least 2% greater than the Statewide average.

Does your project help address critical water supply and water quality needs of DACs and/or EDAs within the East Stanislaus Region? No Yes

If so, how?

What Community(ies)?

How were the DACs/EDAs included in the planning or development of the project?

Native American Tribal Communities

Does your project help to address critical water supply and water quality needs of Native American Tribal Communities within the East Stanislaus region? No Yes

If so, how?

What tribe(s)?

How were the tribe(s) included in the planning or development of the project?

Climate Change Adaptation / Greenhouse Gas (GHG) Emission Reduction

Does your project consider and/or address the effects of climate change on the region through adaptation? No Yes

If so, how?

Does your project consider the contribution of GHG emissions compared to project alternatives? No Yes

If so, how?

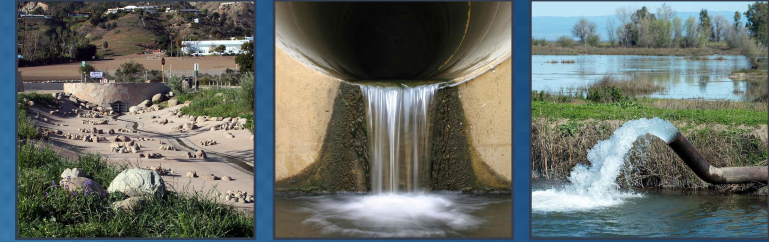
Does your project reduce energy consumption and/or GHG emissions? No Yes

If so, how?

Save | Submit | Preview * Minimum Required Information for Project Submission

- DAC and EDA benefits
- Tribal community benefits
- Climate change adaptation/GHG benefits
- Monitoring
- Technical feasibility

OPTI: ESIRWM Instructions Tab



Add Project

ESIRWM Instructions | Project Info | ESIRWM Requirements | Contact | Description | ESIRWM Benefits | Feasibility | Cost/Funding | Other Considerations | SWRP Eligibility

SWRP Benefits

The East Stanislaus Integrated Regional Water Management (IRWM) Planning Region is an official IRWM planning region approved by the California Department of Water Resources (DWR). The Cities of Modesto, Turlock, Ceres, Hughson, and Waterford, and Stanislaus County executed a Memorandum of Understanding (MOU) to participate as members of the East Stanislaus Regional Water Management Partnership (ESRWMP), the Regional Water Management Group for the Region, and have initiated an update of the 2013 East Stanislaus Integrated Regional Water Management Plan (IRWMP). We are seeking projects to be included in the 2017 East Stanislaus IRWMP.

If you have a project that you would like to be included in the 2017 East Stanislaus IRWMP, please complete the following project information form (either in hard copy or electronically online at <http://www.eaststanirwm.org/projects>). Project information can be submitted electronically through the ESRWMP IRWM Project Database (OPTI) at the web address above. If you do not have internet access, please mail or hand-deliver one copy of your application to:

Jim Alves
City of Modesto Public Works Department
1010 Tenth Street, Suite 4600
P.O. Box 642
Modesto, CA 95353

For consideration and inclusion in the East Stanislaus IRWMP, project information forms MUST BE submitted by 5:00 PM on September 15, 2017.

Instructions

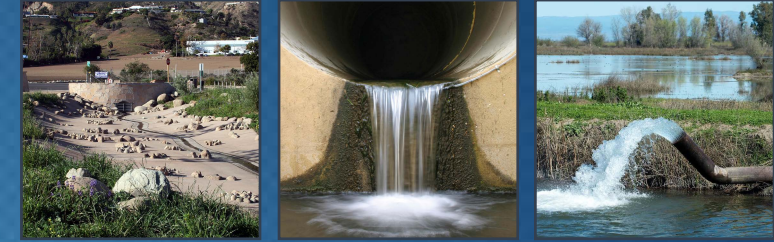
Projects submitted for consideration will be separated into three categories: Concept Projects, Preliminary Design Complete, and Ready-to-Proceed (RTP) Projects. RTP Projects consist of projects that are ready or close to being ready for implementation. They can be construction projects, research projects, or studies, but must be developed enough to have detailed budget and schedule information available and most planning, design and environmental documentation (if required) must be complete. Concept Projects are projects that are at a conceptual level and require additional project development before being implementation-ready. Preliminary Design Complete projects are further developed than the Concept Projects, but not yet ready for implementation. Concept Projects, Preliminary Design Complete projects, and RTP Projects will be included in the IRWMP, but Concept Projects will not be considered for inclusion in applications for funding through DWRs IRWM Grant Program.

Important Items to Note Regarding Future Grant Funding

- This project solicitation process is for the purpose of compiling projects to be included in the East Stanislaus IRWMP, not for the purpose of applying to DWR for IRWM grant funding at this time.
- Per DWR's IRWM Guidelines, all project proponents with projects included in an IRWM grant application must adopt the IRWM Plan.
- At this time, DWR anticipates having an IRWM Implementation Grant solicitation in early 2018. In order to be eligible for grant funding, the East Stanislaus IRWMP must be reviewed and approved by DWR through the Plan Review Process (PRP). In order for projects to be eligible for funding, they must be included in the adopted IRWMP.
- Submitting your project for consideration for inclusion in the East Stanislaus IRWMP now will make it eligible for future IRWM grant cycles. However, inclusion of your project in the IRWMP will not guarantee that it is included in a grant application.

Save | Submit | Preview * Minimum Required Information for Project Submission

OPTI: ESIRWMP Requirements Tab



- ONLY REQUIRED for East Stanislaus IRWM Projects

Add Project

ESIRWM Instructions | Project Info | **ESIRWM Requirements** | Contact | Description | ESIRWM Benefits | Feasibility | Cost/Funding | Other Considerations | SWRP Eligibility

SWRP Benefits

Minimum Requirements for Inclusion in the East Stanislaus IRWMP

If the Proposed Project does not meet the following requirements, it will not be considered for inclusion in the East Stanislaus IRWMP:

- The Project must be within the boundaries of the East Stanislaus IRWM Planning Region or include part of the East Stanislaus IRWM Planning Region.
- The Project must meet at least one of the East Stanislaus Region's Objectives listed below. Check all that apply.
- The Project must fulfill at least one of the DWR's Resource Management Strategies and one of DWR's Statewide Priorities.
- Be technically feasible.

East Stanislaus Goals & Objectives *

Water Supply Goal - To protect existing water supplies and water rights, and improve regional water supply reliability

Water Supply Objectives

- Promote the use of groundwater storage and conjunctive use options to reduce groundwater overdraft.
- Protect existing water rights, including permitted diversions and extractions.
- Implement water conservation plans for both urban and agricultural uses.
- Support monitoring and research to improve understanding of water supplies and needs.
- Address intra- and inter-region conveyance infrastructure needs.
- Address changes in runoff and recharge due to climate change, including amount, timing, and variability.

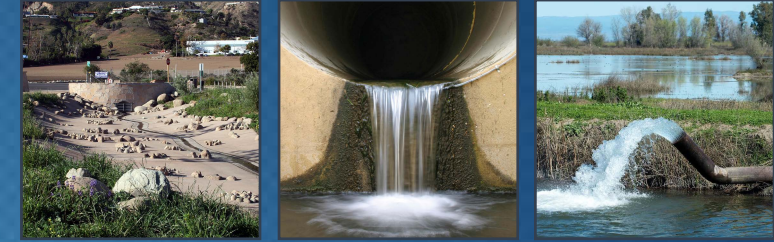
Flood Protection Goal - To ensure flood protection strategies are developed and implemented through a collaborative process, utilizing both local and watershed-wide approaches designed to maximize opportunities for comprehensive water resource management that meet multiple objectives.

Flood Protection Objectives

- Develop outlines of regional projects and plans necessary to protect infrastructure from flooding and erosion from the 100-year event.
- Work with stakeholders to assess existing flood attenuation by implementing land management strategies throughout the watershed.

Save | Submit | Preview | * Minimum Required Information for Project Submission

OPTI: ESIRWM Benefits Tab



Add Project

ESIRWM Instructions | Project Info | ESIRWM Requirements | Contact | Description | **ESIRWM Benefits** | Feasibility | Cost/Funding | Other Considerations | SWRP Eligibility

SWRP Benefits

Benefits

Please select the primary benefit provided by the project. Choose ONLY one.

- 1. **Water Supply:** Protect existing water supplies and water rights, and improve regional water supply reliability.
- 2. **Water Quality:** Protect and improve water quality for beneficial uses consistent with regional interests and the RWQCB Basin Plan in cooperation with local, state, and federal agencies and regional stakeholders.
- 3. **Environmental Protection and Enhancement:** Protect the environmental resources of the Stanislaus, Tuolumne, Merced, and San Joaquin River watersheds by identifying, promoting and implementing opportunities to assess, restore and enhance natural resources of these watersheds.
- 4. **Flood Protection:** Ensure flood protection strategies are developed and implemented through a collaborative process, utilizing both local and watershed-wide approaches designed to maximize opportunities for comprehensive water resources management that meet multiple objectives.
- 5. **Regional Communication and Cooperation:** Implement and promote the East Stanislaus IRWM Plan through regional communication, cooperation, and education.
- 6. **Economic and Social Responsibility:** Promote development and implementation of projects, programs, and policies that are socially impartial and economically sound.

Does your project help the region meet additional benefits? If yes, please describe the benefits as applicable.

- 1. Water Supply No Yes If so, please explain
- 2. Water Quality No Yes If so, please explain
- 3. Environmental No Yes If so, please explain
- 4. Flood Management No Yes If so, please explain
- 5. Regional Communication and Cooperation No Yes If so, please explain
- 6. Economic and Social Responsibility No Yes If so, please explain

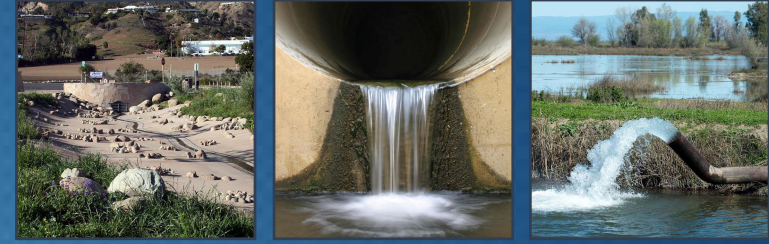
Describe any steps taken to provide multiple benefits from your project:

(350 characters remaining)

Save | Submit | Preview * Minimum Required Information for Project Submission

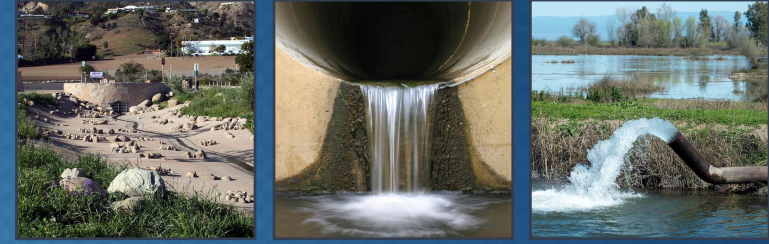
● **NOT**
REQUIRED if
project is only
being submitted to
the SWRP

Next Steps



- Open project solicitation period
- Prioritize submitted projects
- Prepare SWRP chapters
- Reach out to disadvantaged communities (DACs)
- Assess recharge sites
- Conduct stormwater monitoring

Questions/Comments?



Hawkeye Sheene

415.321.3427

hsheene@woodardcurran.com

RMC, a Woodard & Curran Company

Brian Van Lienden, P.E.

916.999.8777

bvanlienden@woodardcurran.com

RMC, a Woodard & Curran Company

STAKEHOLDER MEETING 1 SIGN-IN SHEET – 10/23/2017

NAME	AGENCY	PHONE #	EMAIL ADDRESS
Hawkeye sheene, Brian van Lienden,	Woodard & Curran		
Leslie Dumas, Jen Kidson			
Jim Alves	City of Modesto	209 571 5537	jvalves@modestogov.com
Tom Arvis	STANISLAUS COUNTY FARM BUREAU	(209) 522-7278	TomAr@stanfarmbureau.org
Vance Kennedy	—	209 545-3575	—
KEITH D. BOGGS	Stanislaus County	209. 652-1514	boogsk@stancounty.com
Sarah Kuo	Ceres	(209) 417-0998	skuo@ci.ceres.ca.us
Kathleen Falk	Ceres	(209) 417-0998	kfalk@ci.ceres.ca.us
DAVE PRATT	CERES	209 395 5000	davep1903@hotmail.com
Tony Marshall	Oakdale	(209) 239-6229	tony@mcrceng.com
Maria Encinas	Patterson	(209) 895-8001	mencinas@ci.patterson.ca.us

STAKEHOLDER MEETING 1 SIGN-IN SHEET – 10/23/2017			
NAME	AGENCY	PHONE #	EMAIL ADDRESS
Karon Morgan	City of Waterford	209-988-7423	kmorgan kmorgan@cityofwaterford.org
VICTORIA DRAKE	ENGEQ	626-408-4436	vdrake@engeo.com
Josefina Queda	Airport Community		
Martha Garcia	Airport Community		
Sandra Anaya	Airport Community		sandraanaya477@gmail.com
Bertha Torres	Airport Community		
Edgar Garibay	Tuolumne River Trust (Airport Community)	edgar@ tudumne.org	edgar@tudumne.org
Vance Kennedy	—	209 545-3575	—
Walt Ward	Stan Co	525-6710	wward@envres.org
Miguel Galvez	Stan Co	525-6730	galvezm@stanco.com

Miguel Alvarez from the City of Modesto was also in attendance.

opti quick start guide

Opti helps you locate, connect, share, and integrate IRWMP project information within your IRWM Community. This Quick Start Guide will assist you to jump start the use of *Opti*.

How to Gain Access to Opti

Opti is a public system. On the login screen, input the required information and click on the *Register* button. Once your account has been successfully created, you may enter your email and password in the "Existing Users" box and click *Login*.

How to Navigate Opti

Once logged into *Opti*, information and tools are accessible via the navigation bar. Click on the icons to display different modules in your screen. Modules provided are:

- **Home** – displays Announcements, Events, and Recently Added Projects
- **Projects** – displays a map or list of the projects and allows users to add or share projects
- **Community** – displays a list of Individuals and Organizations
- **Search** – provides various criteria to find projects of interest
- **Profile** – allows users to manage their profile information and access the User Guide

How to View Announcements and Events

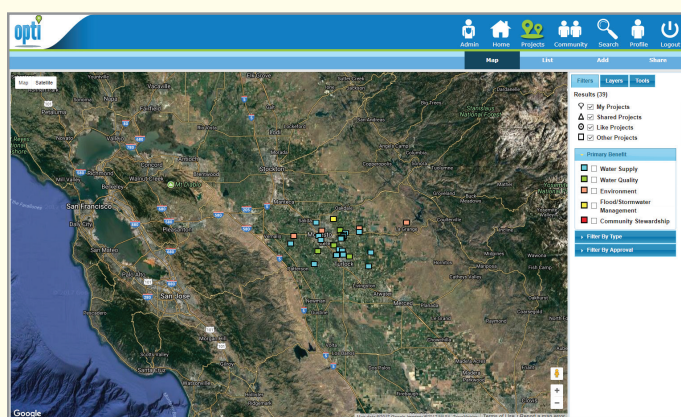
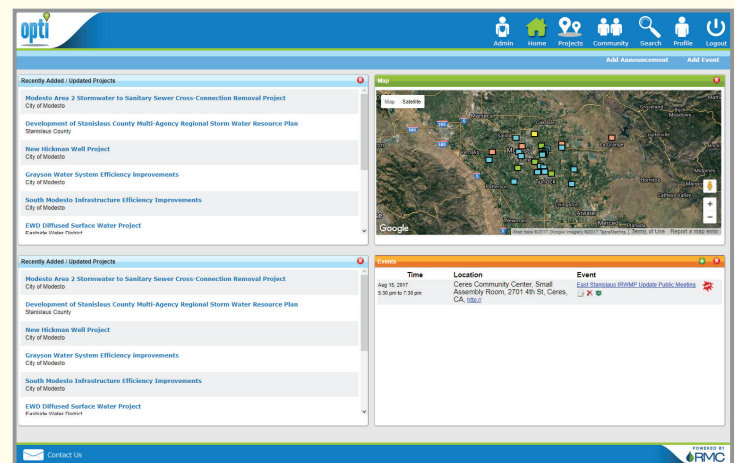
Announcements and Events are posted in the **Home** page.

- Click on an Announcement or Event hyperlink to view the details and download attachments.
- Click on **Add Announcement** or **Add Event** in the sub-navigation bar to add a new announcement or event.

How to Become a Community Member

To add and submit projects to *Opti*, you must first become a Community Member.

- Click on the **Profile** icon to open your account information.
- Fill out all the required fields and click the *Become a Community Member* button at the bottom of the **Contact Info** window. You will receive an email when your request has been authorized.



NOTE: Your project will not be visible to the public until you have submitted it to the administrator and it has been accepted for publication.

How to View Project Details

To view project details and update your project:

- Click on the **Projects** icon in the navigation bar.
 - In the Map view, mouse over your project and click on the project title when it appears.
 - In the List view, filter the list to show "My Projects" and select your project.
- A new window will open with the project details.
- Click on **Details** in the sub-navigation bar to view and edit project information.

How to Add a New Project

To add a project to *Opti*:

- Click on the **Projects** icon in the navigation bar
- Click **Add** in the sub-navigation bar. If you are a Community Member, the project entry screens will open.
- Fill out the project information and click the *Save* button.
- You may continue to update project information prior to and after submitting the project to the administrator.

How to Share a Project

The Share Tool allows a select group of users to be able to view and edit your project prior to and after submission.

- Click on the **Projects** icon in the navigation bar
- Click on **Share** in the sub-navigation bar to open the Share Tool.