


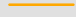
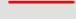

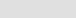
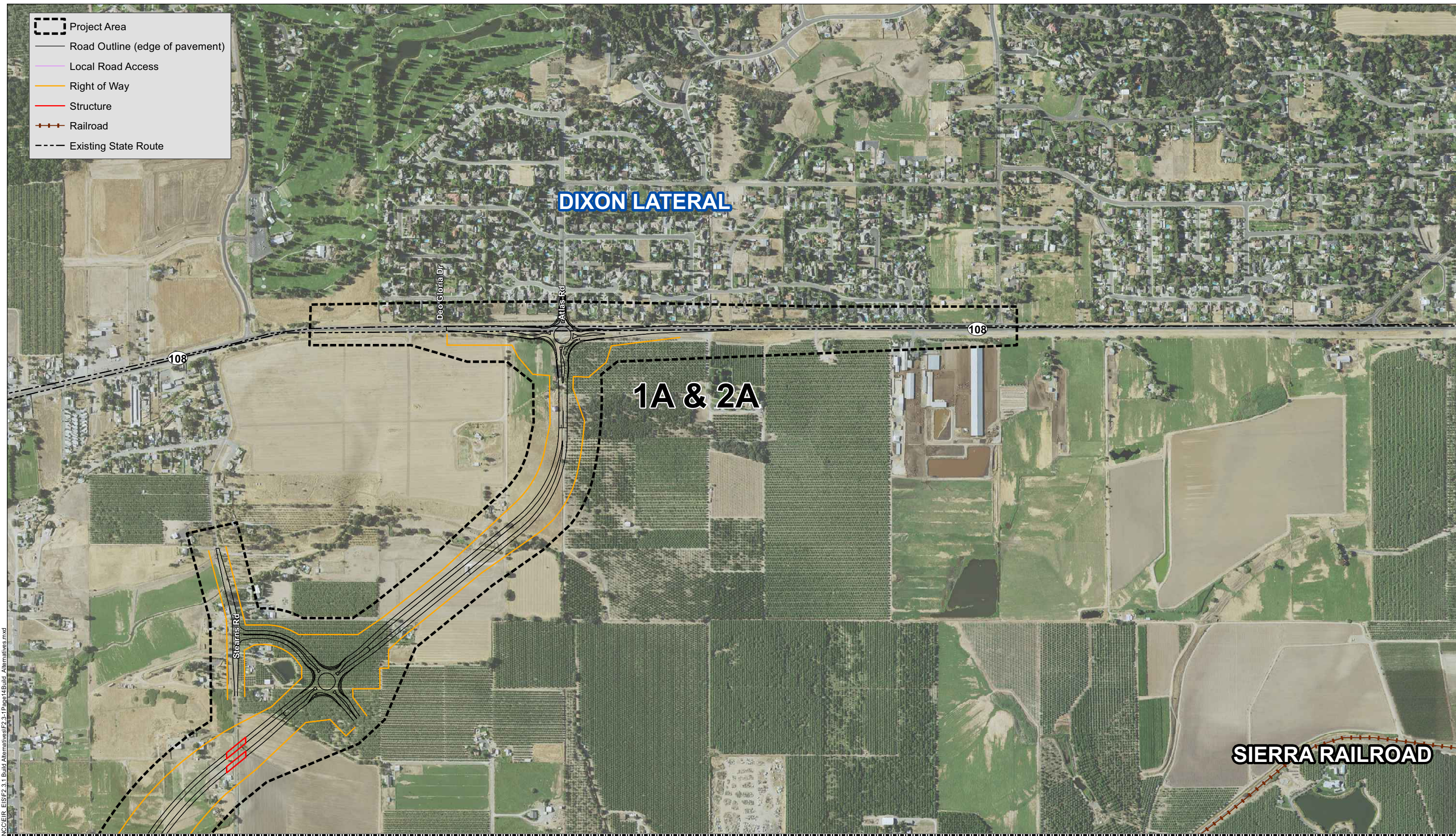


-  Project Area
-  Road Outline (edge of pavement)
-  Local Road Access
-  Right of Way
-  Structure
-  Railroad
-  Existing State Route



DIXON LATERAL

1A & 2A

SIERRA RAILROAD

108

108

Steams Rd

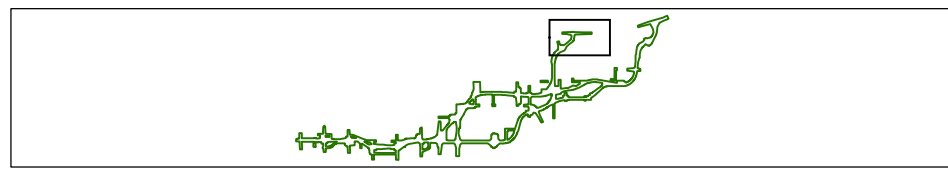
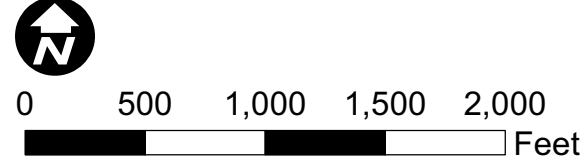
Deco Gloria Dr

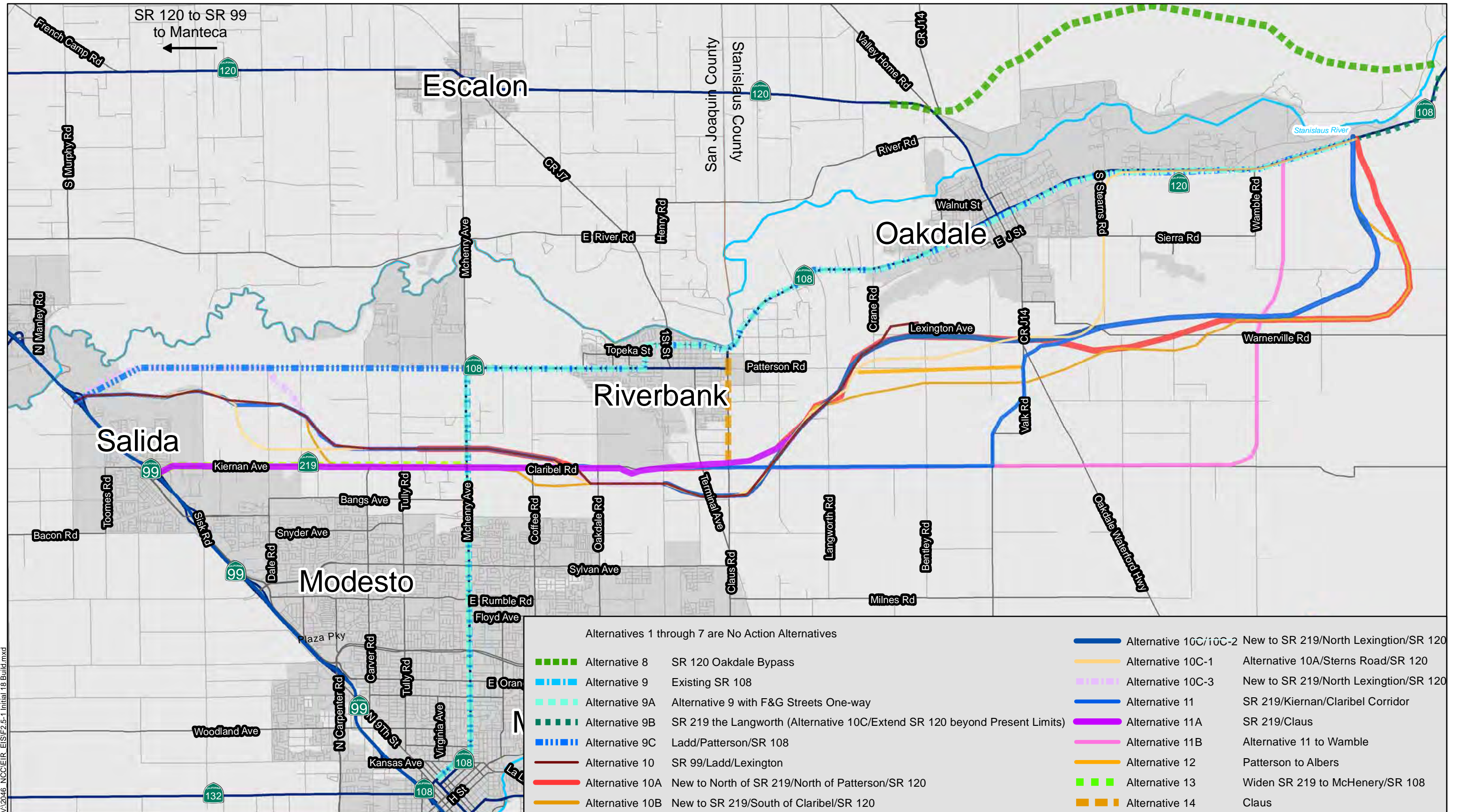
Atlas Rd

Match Line - See Page 13

V:\2016\NCC\EIR_EIS\F2.3-1\Build Alternatives\F2.3-1\Page14\Build Alternatives.mxd

Source: ESRI Maps Online March 2011; 1/6/2016.





V:\2046_NCC\EIR_EIS\F2.5-1_Initial_18_Build.mxd

Source: ESRI Maps Online; Route Adoption Plan 2010 1/6/2016.

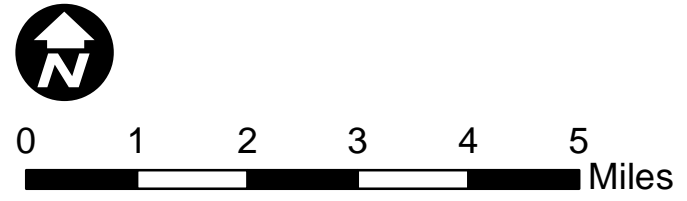
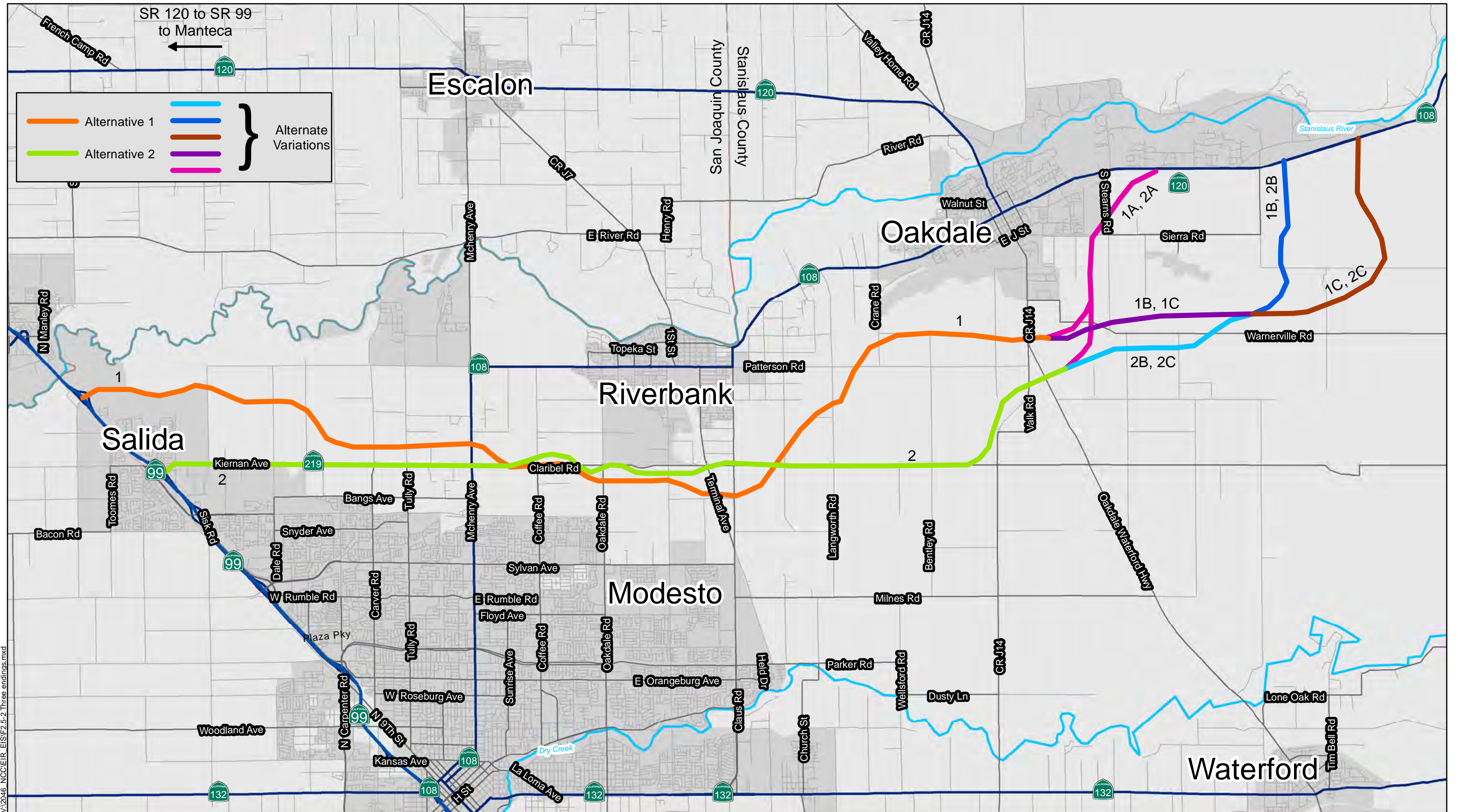


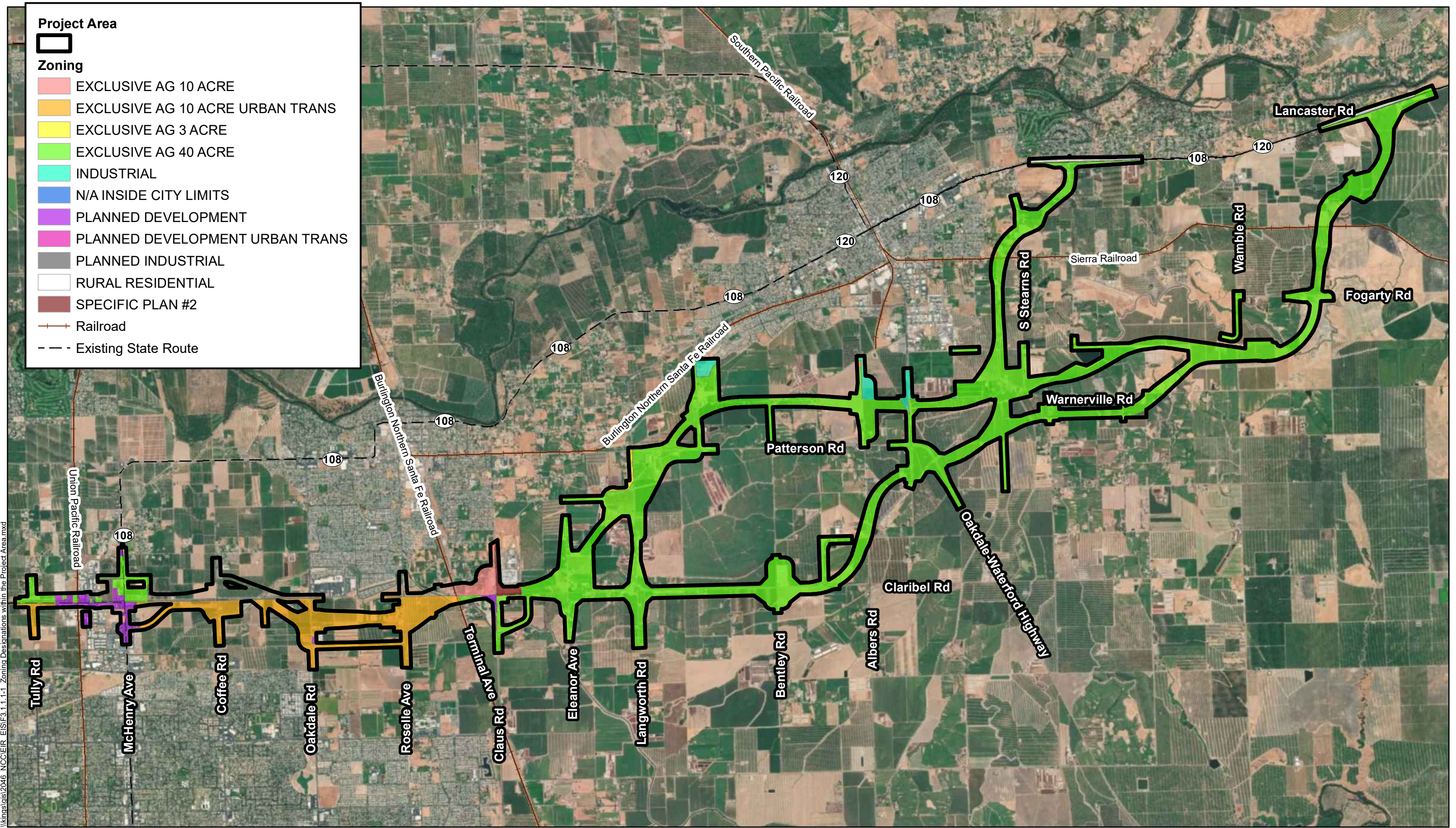
FIGURE 2.5-1
Initial 18 Build Alternatives
 EA: 10-0S8000, Project ID # 1000000263
 North County Corridor State Route 108 Project
 Stanislaus County, California



V:\2016 NCC/EA/EAISIF2.5-2 Three endings.mxd

Source: ESRI Maps Online; Route Adoption Plan 2010 1/6/2016.

FIGURE 2.5-2
Initial Three Ending Alignments
 EA: 10-0S8000, Project ID # 1000000263
 North County Corridor State Route 108 Project
 Stanislaus County, California



\\kings\dgis\2046_NCC\EIR_EIS\F3.1.1.1-1_Zoning_Designations_within_the_Project_Area.mxd

Source: ESRI, DigitalGlobe, GeoEye, i-cubed, USDA, USGS, AEX, Getmapping, Aerogrid, IGN, IGP, swisstopo, and the GIS User, 7/18/2018.



FIGURE 3.1.1.1-1
Zoning Designations within the Project Area
 EA: 10-0S8000, Project ID # 100000263
 North County Corridor New State Route 108 Project
 Stanislaus County, California