

V:\2046 NCC\EIR EIS\F3.3.5-1 Special Status Species1.mxd

Source: Basemap - ESRI Aerial Imagery (2011); 1/6/2016.

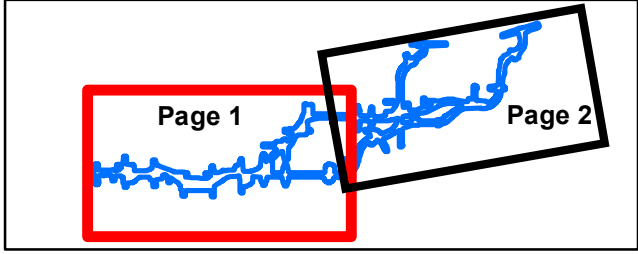
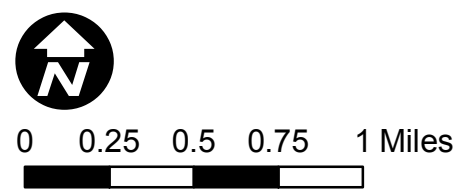
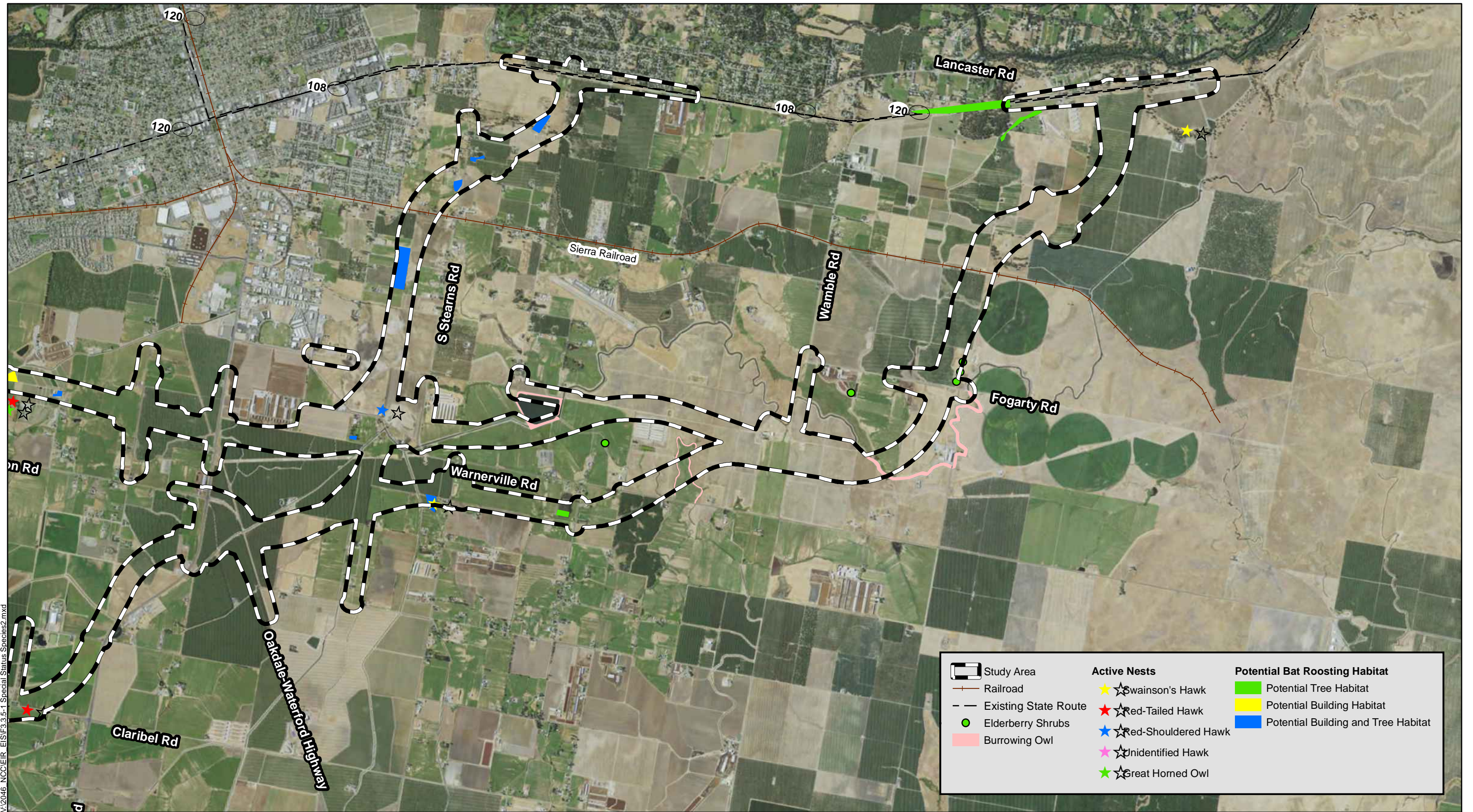


FIGURE 3.3.5-1
Page 1 of 2
Special-Status Species Mapping
 EA: 10-0S8000, Project ID # 1000000263
 North County Corridor New State Route 108 Project
 Stanislaus County, California



V:\2016\NCC\EA\GIS\F3.3.5-1\Special Status Species2.mxd

Source: Basemap - ESRI Aerial Imagery (2011); 1/6/2016.



0 0.25 0.5 0.75 1 Miles

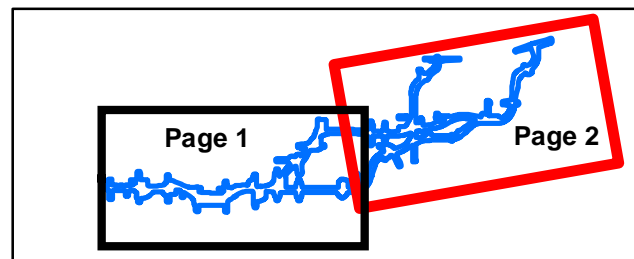
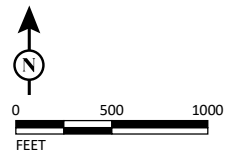
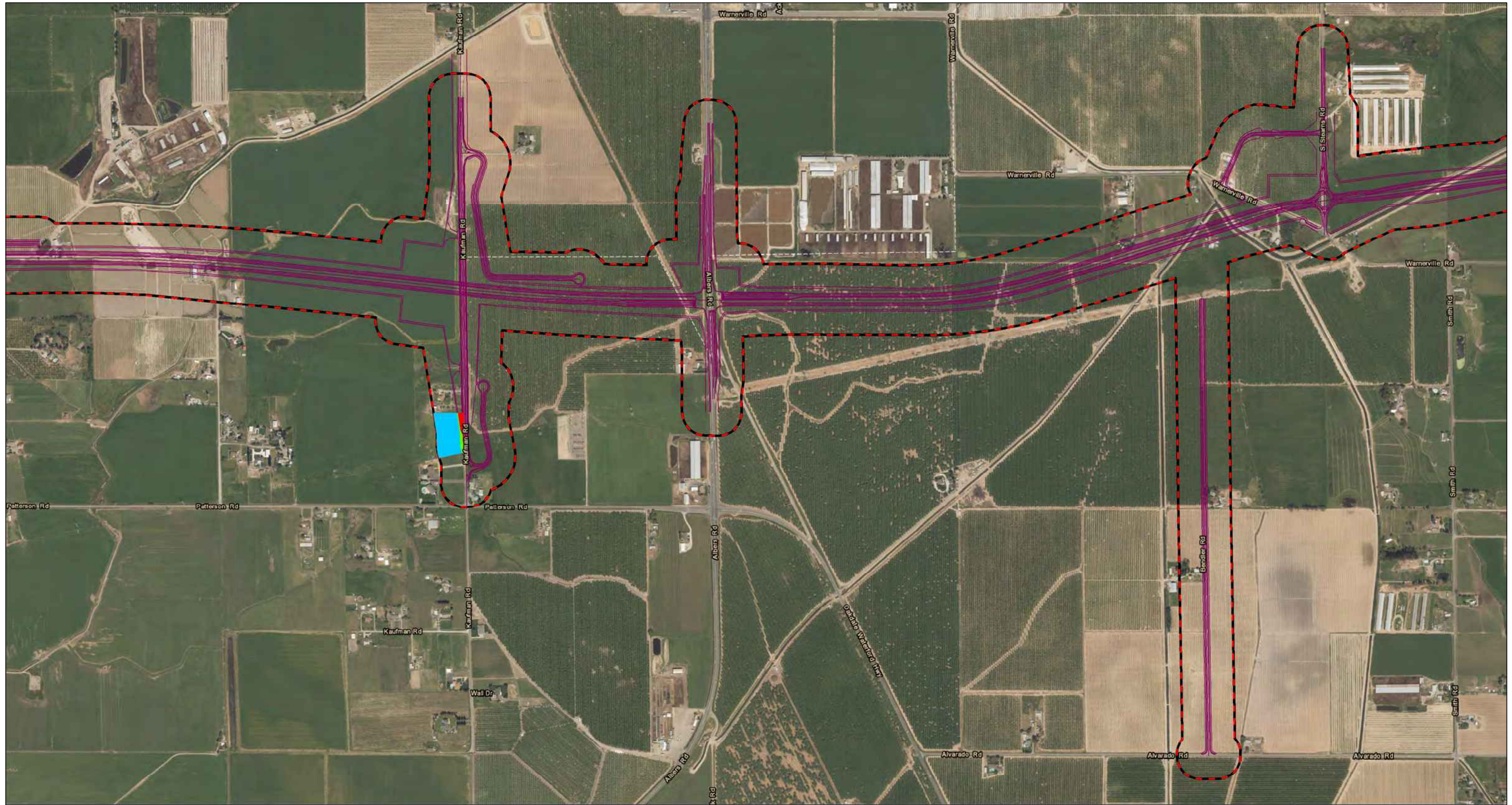


FIGURE 3.3.5-1
Page 2 of 2
Special-Status Species Mapping
 EA: 10-0S8000, Project ID # 1000000263
 North County Corridor New State Route 108 Project
 Stanislaus County, California



LEGEND

- Action Area - (3,545.33 ac)
- Build Alternative
- Impacts to Potential Habitat for Hartweg's Golden Sunburst - (15.58 ac)
 - Direct Permanent Impacts - (3.28 ac)
 - Direct Temporary Impacts - (0.57 ac)
 - Indirect Impacts - (11.73 ac)

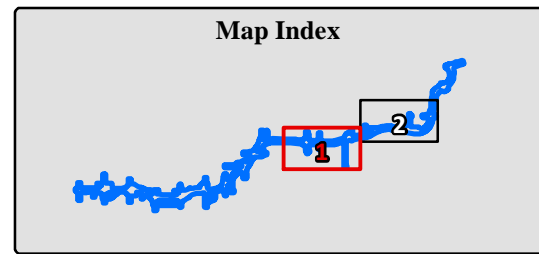
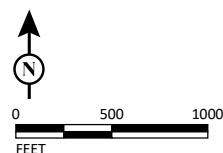
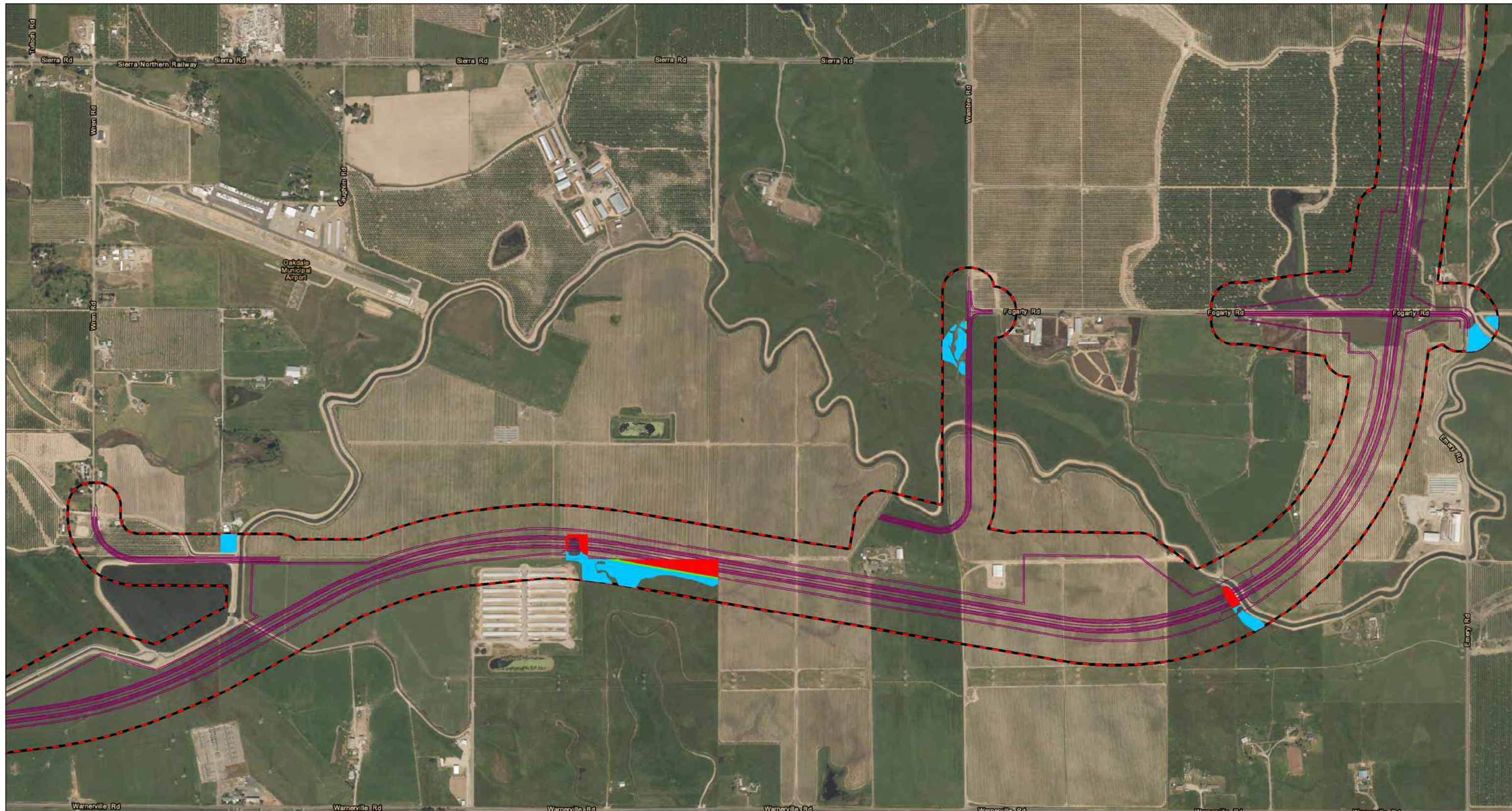


FIGURE 3.3.5-2
Page 1 of 2
Potential Hartweg's Golden Sunburst Habitat
 EA: 10-0S8000, Project ID # 100000263
 North County Corridor New State Route 108 Project
 Stanislaus County, California

SOURCE: Basemap - ESRI Aerial Imagery (04/2016); Design - Dokken Engineering (2018); Mapping - LSA (2018)

I:\Dhg1302\GIS\Reports\BA\BA_Fig17imps_hab_sunburst.mxd (11/16/2018)



LEGEND

- Action Area - (3,545.33 ac)
- Build Alternative
- Impacts to Potential Habitat for Hartweg's Golden Sunburst - (15.58 ac)
 - Direct Permanent Impacts - (3.28 ac)
 - Direct Temporary Impacts - (0.57 ac)
 - Indirect Impacts - (11.73 ac)

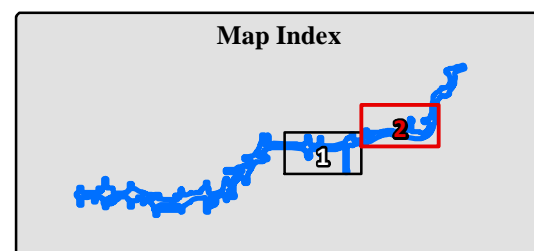
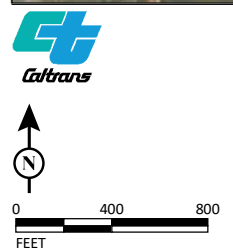
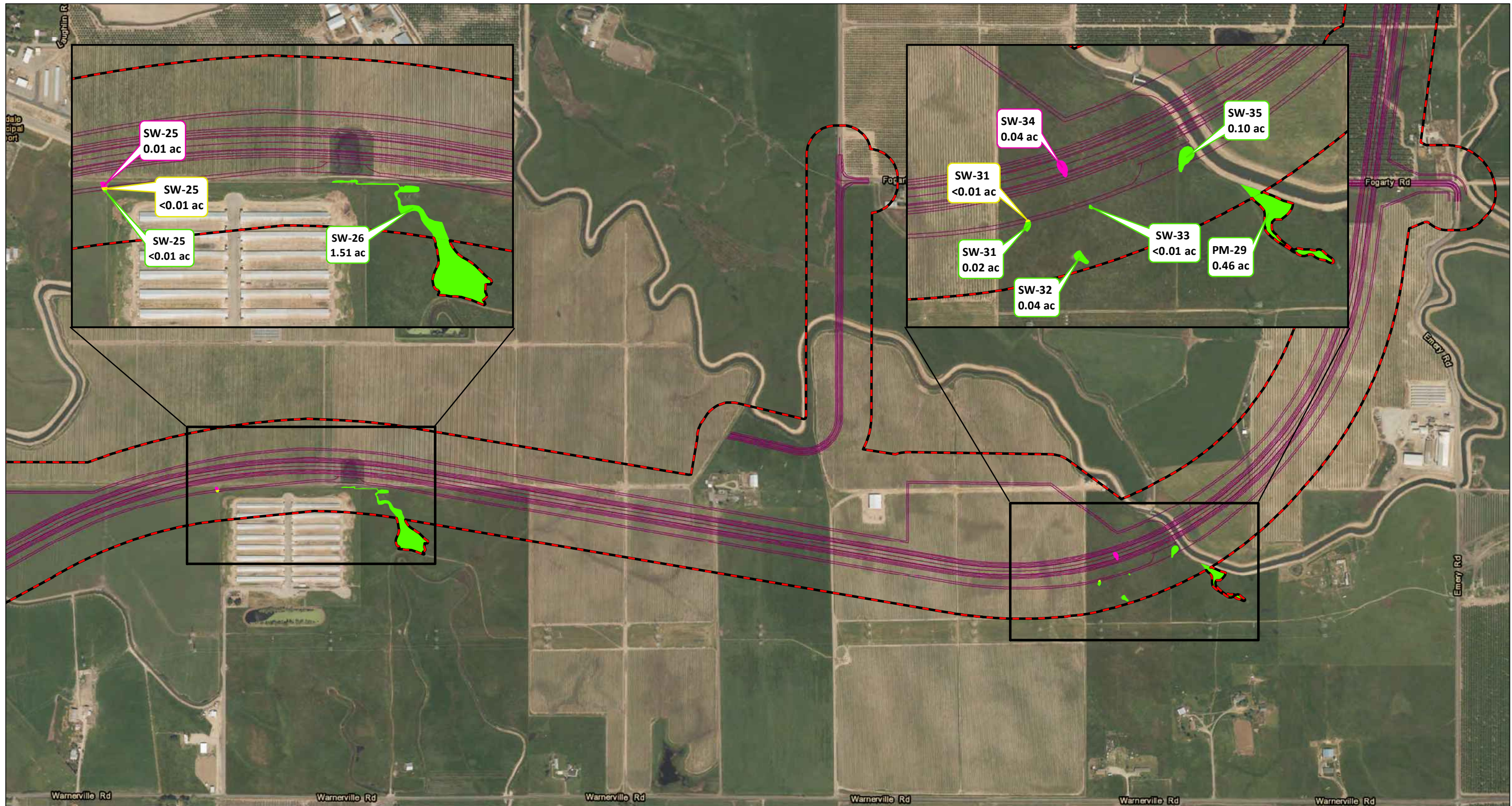


FIGURE 3.3.5-2
Page 2 of 2
Potential Hartweg's Golden Sunburst Habitat
 EA: 10-OS8000, Project ID # 1000000263
 North County Corridor New State Route 108 Project
 Stanislaus County, California



LEGEND

- Action Area - (3,546.85 ac)
- Build Alternative
- Impacts to Potential Habitat for Colusa Grass, Greene's Tuctoria, VPFS, and VPTS - (2.29 ac)
 - Direct Permanent Impacts - (0.06 ac)
 - Direct Temporary Impacts - (0.01 ac)
 - Indirect Impacts - (2.22 ac)

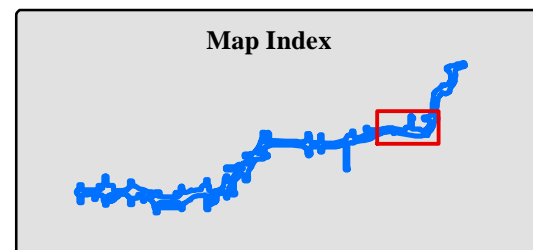
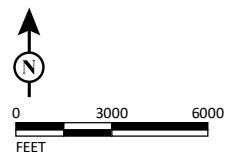
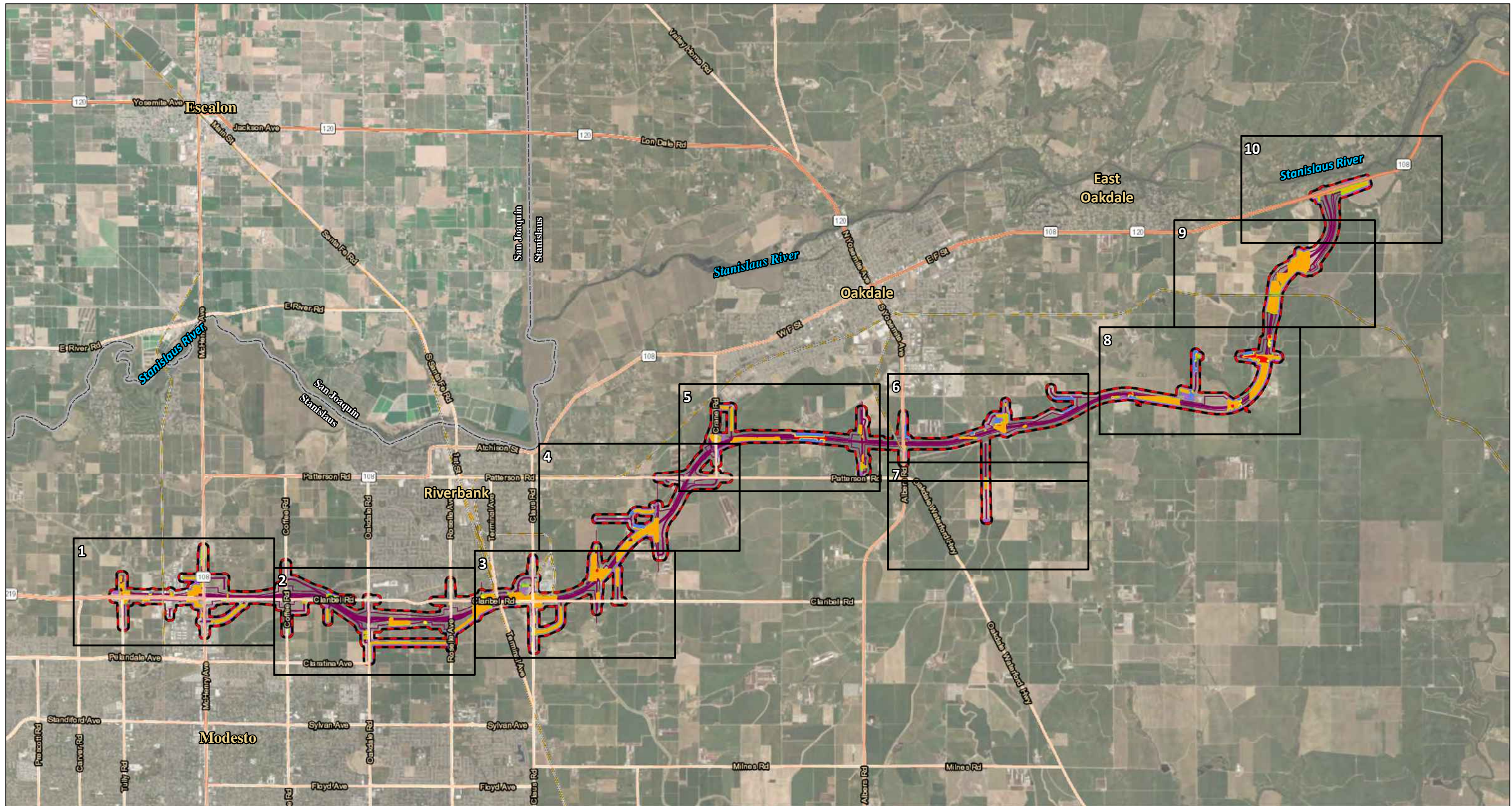


FIGURE 3.3.5-3
Potential Colusa Grass, Greene's Tuctoria, Vernal Pool Fairy Shrimp, and Vernal Pool Tadpole Shrimp Habitat

EA: 10-0S8000, Project ID # 100000263
 North County Corridor New State Route 108 Project
 Stanislaus County, California



LEGEND

- Action Area - (3,546.85 ac)
- Mapbook Page Index
- Build Alternative

- Impacts to Potential Aquatic Habitat for CTS - (69.44 ac)**
- Direct Permanent Impacts - (14.07 ac)
 - Direct Temporary Impacts - (2.92 ac)
 - Indirect Effects - (52.45 ac)

- Impacts to Potential Upland Habitat for CTS - (812.85 ac)**
- Direct Permanent Impacts - (237.43 ac)
 - Direct Temporary Impacts - (58.98 ac)
 - Indirect Effects - (516.44 ac)

FIGURE 3.3.5-4

Potential California Tiger Salamander Habitat

EA: 10-0S8000, Project ID # 1000000263
 North County Corridor New State Route 108 Project
 Stanislaus County, California

SOURCE: Basemap - ESRI World Imagery (04/2016); Mapping - LSA (2016)

I:\Dhg1302\GIS\Reports\BA\BA_Fig20.0_Impacts_CTS_hab_index_rev.mxd (10/14/2019)