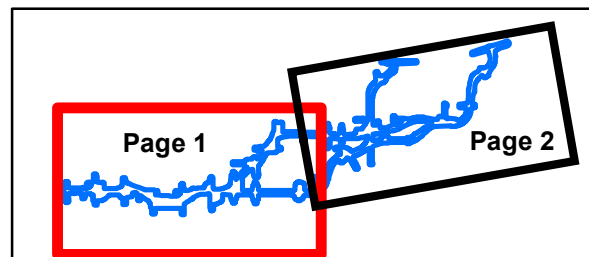


\\gis\gis\2046\_NCC\EIR\_EIS\F3.3.1-1\_Natural\_Communities.mxd

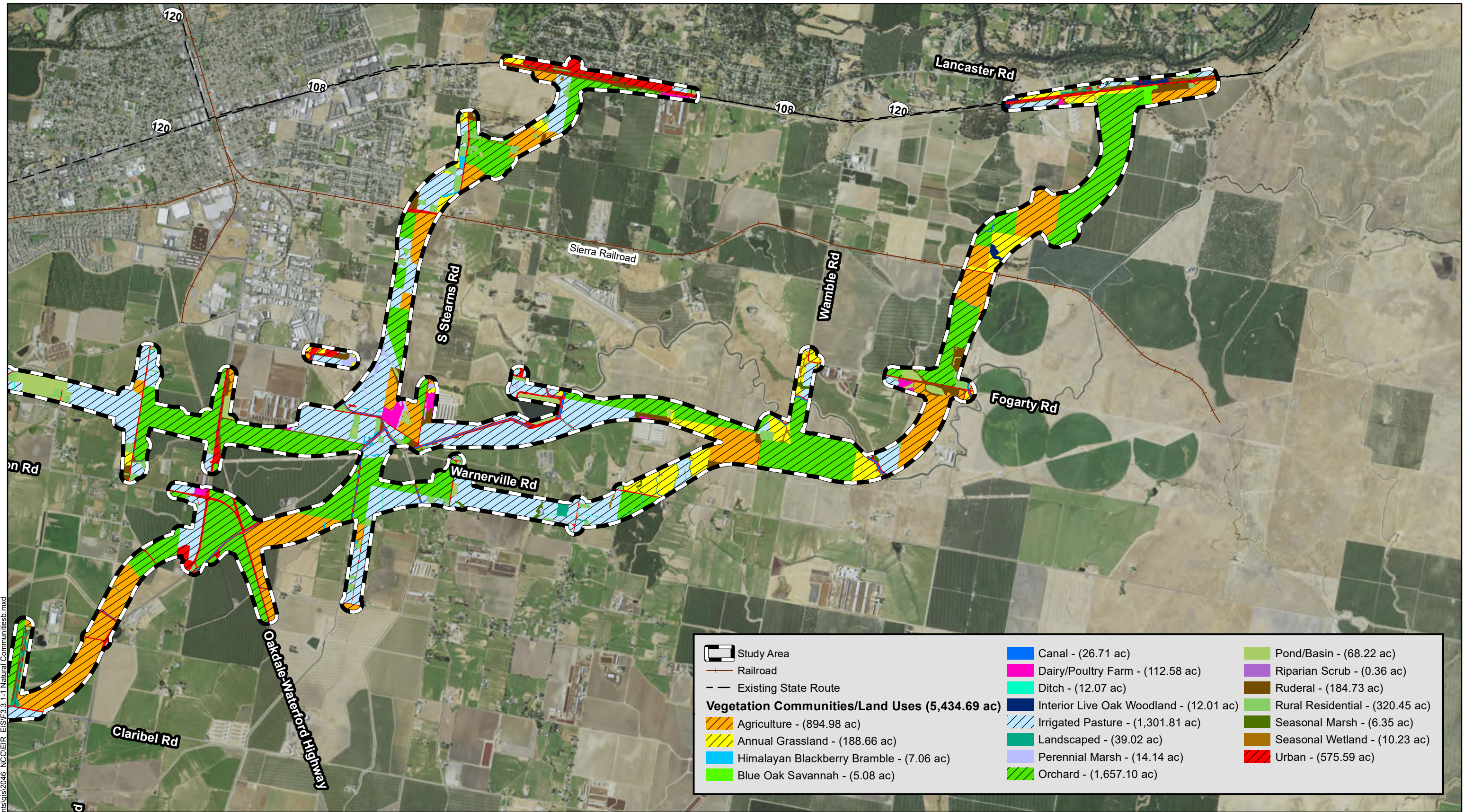
Source: Basemap - ESRI Aerial Imagery (2011); 8/9/2016



0 0.25 0.5 0.75 1 Miles



**FIGURE 3.3.1-1**  
**Page 1 of 2**  
**Natural Communities and Land Use**  
 EA: 10-0S8000, Project ID # 1000000263  
 North County Corridor New State Route 108 Project  
 Stanislaus County, California

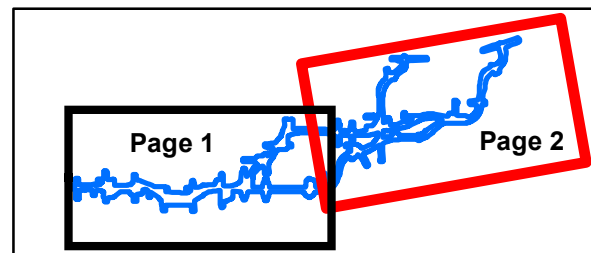


\\gis\gis\2046\_NCC\EAIR\_EIS\F3.3.1-1\_Natural\_Communities.mxd

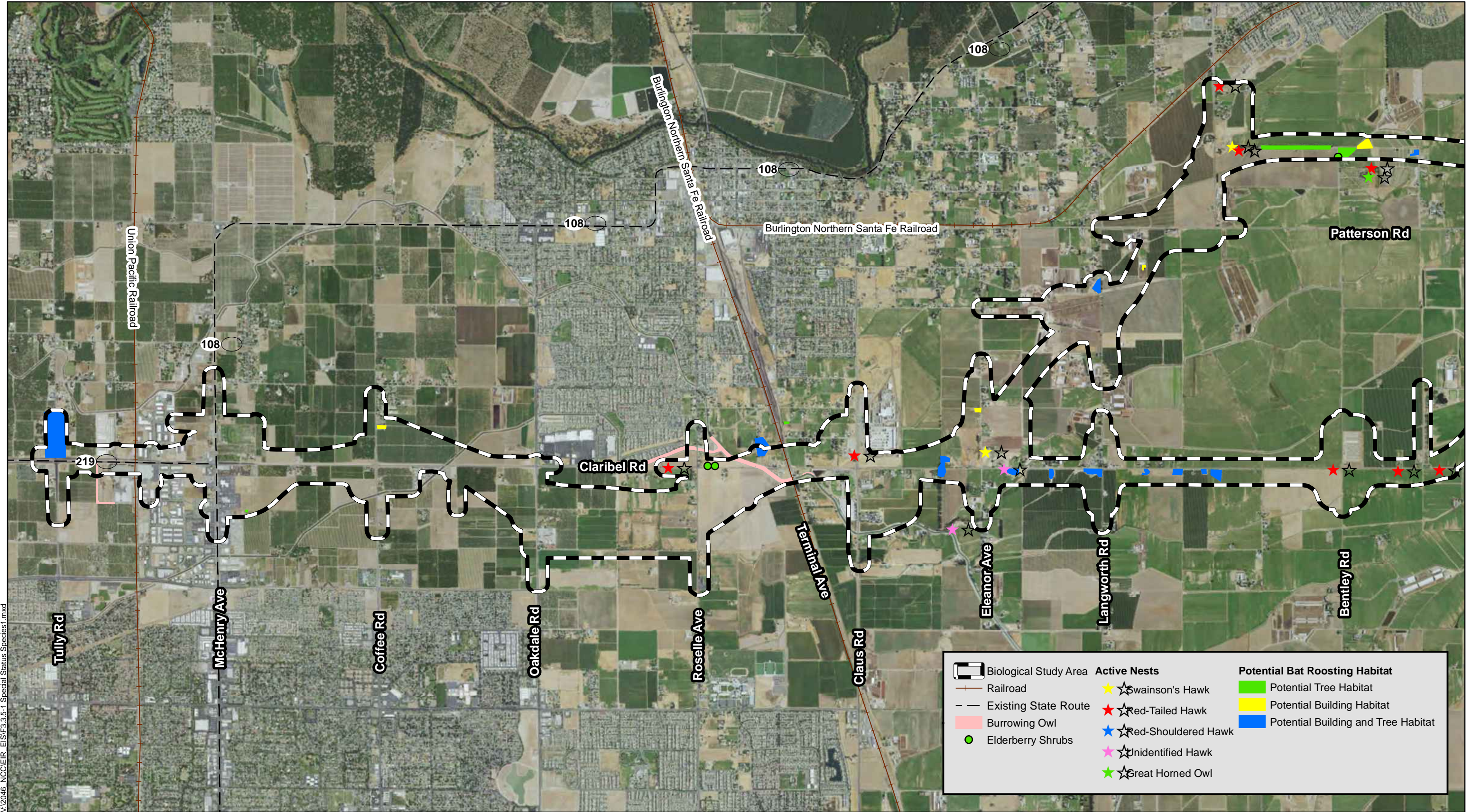
Source: Basemap - ESRI Aerial Imagry (2011); 8/9/2016



0 0.25 0.5 0.75 1 Miles

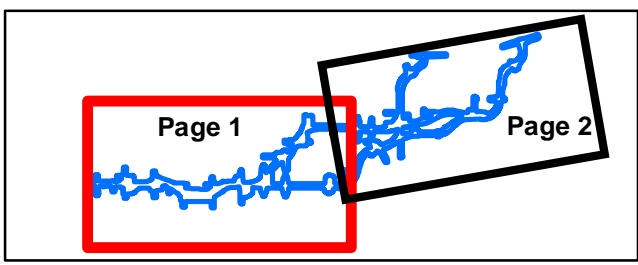
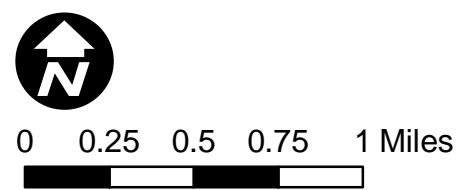


**FIGURE 3.3.1-1**  
**Page 2 of 2**  
**Natural Communities and Land Use**  
 EA: 10-0S8000, Project ID # 1000000263  
 North County Corridor New State Route 108 Project  
 Stanislaus County, California

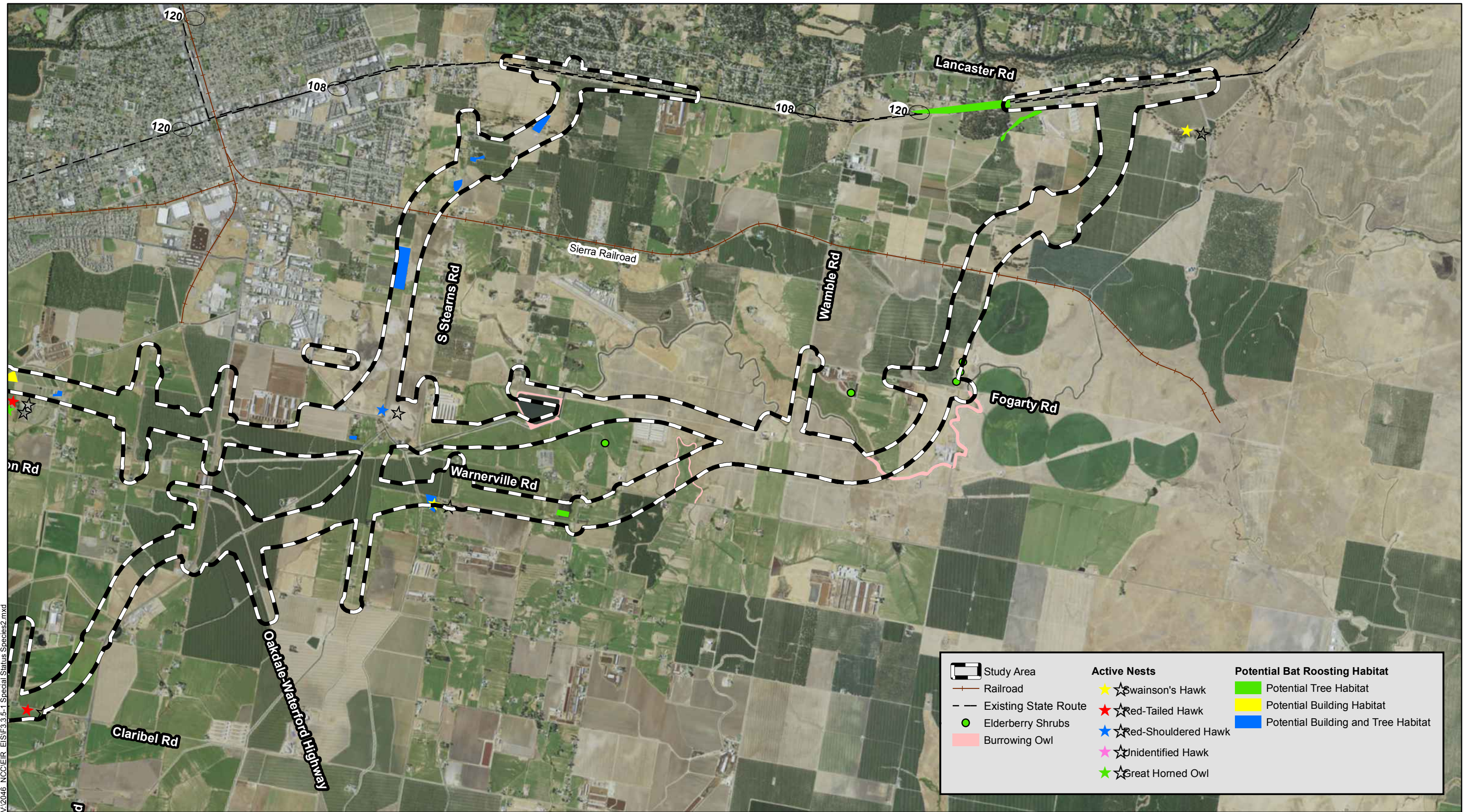


V:\2016\NCC\EA\EA\3.3.5-1\Special Status Species1.mxd

Source: Basemap - ESRI Aerial Imagery (2011); 1/6/2016.



**FIGURE 3.3.5-1**  
**Page 1 of 2**  
**Special-Status Species Mapping**  
 EA: 10-0S8000, Project ID # 1000000263  
 North County Corridor New State Route 108 Project  
 Stanislaus County, California

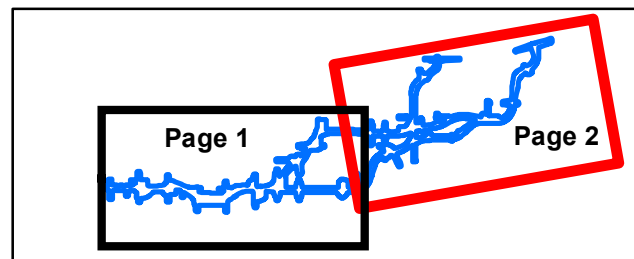


V:\2046 NCC\EIR EIS\F3.3.5-1 Special Status Species2.mxd

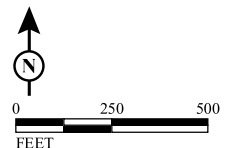
Source: Basemap - ESRI Aerial Imagry (2011); 1/6/2016.



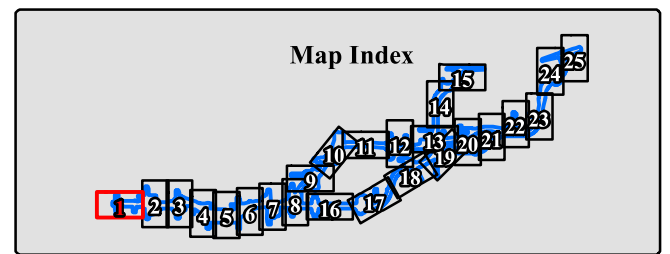
0 0.25 0.5 0.75 1 Miles



**FIGURE 3.3.5-1**  
**Page 2 of 2**  
**Special-Status Species Mapping**  
 EA: 10-0S8000, Project ID # 1000000263  
 North County Corridor New State Route 108 Project  
 Stanislaus County, California

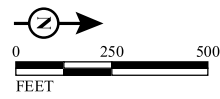
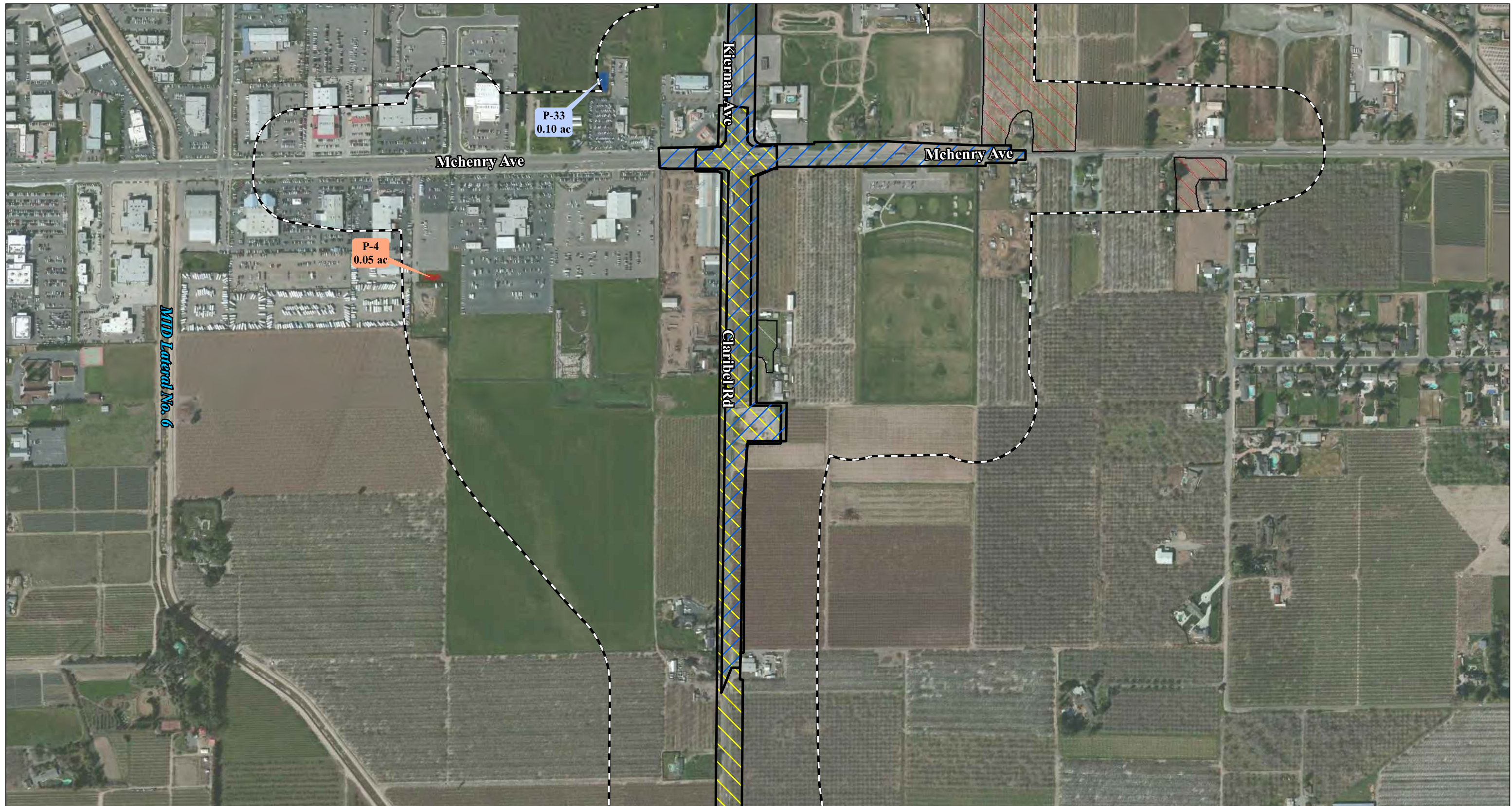


LEGEND		Acronym Names	
	Study Area	C - Canal	
	Claribel Rd. Widening Project	D - Ditch	
	SR-219 Widening Project	P - Pond	
	Converted to Orchard	SW - Seasonal Wetland	
	Irrigated Pasture	PM - Perennial Marsh	
		IW - Irrigated Wetland	
<b>Potential Jurisdictional Waters of the U.S. - (82.85 ac)</b>			
	Non-Wetland Waters - (37.30 ac)		
	Wetlands - (45.55 ac)		
	Data Point		
	Photo Point		



**Figure 3.3.1-2**  
**Page 1 of 25**  
 Preliminary Jurisdictional Delineation  
 EA: 10-0S800, Project ID # 1000000263  
 North County Corridor New State Route 108 Project  
 Stanislaus County, California

SOURCE: Basemap - ESRI Aerial Imagery (2011); Mapping - LSA Associates, Inc. (2014); ICF (2011)  
 I:\Dhg1302\GIS\Reports\Delin\delin\_11x17\_500ft.mxd (1/21/2015)



**LEGEND**

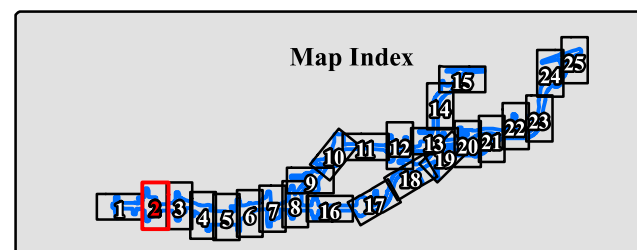
- Study Area
- Claribel Rd. Widening Project
- SR-219 Widening Project
- Converted to Orchard
- Irrigated Pasture

**Potential Jurisdictional Waters of the U.S. - (82.85 ac)**

- Non-Wetland Waters - (37.30 ac)
- Wetlands - (45.55 ac)
- Data Point
- Photo Point

**Acronym Names**

- C - Canal
- D - Ditch
- P - Pond
- SW - Seasonal Wetland
- PM - Perennial Marsh
- IW - Irrigated Wetland



**Figure 3.3.1-2**  
**Page 2 of 25**

Preliminary Jurisdictional Delineation  
EA: 10-0S800, Project ID # 1000000263  
North County Corridor New State Route 108 Project  
Stanislaus County, California



**LEGEND**

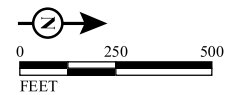
- Study Area
- Claribel Rd. Widening Project
- SR-219 Widening Project
- Converted to Orchard
- Irrigated Pasture

**Potential Jurisdictional Waters of the U.S. - (82.85 ac)**

- Non-Wetland Waters - (37.30 ac)
- Wetlands - (45.55 ac)
- Data Point
- Photo Point

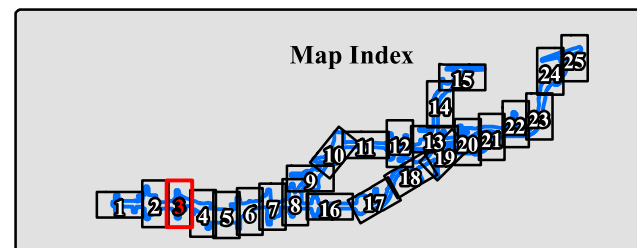
**Acronym Names**

- C - Canal
- D - Ditch
- P - Pond
- SW - Seasonal Wetland
- PM - Perennial Marsh
- IW - Irrigated Wetland



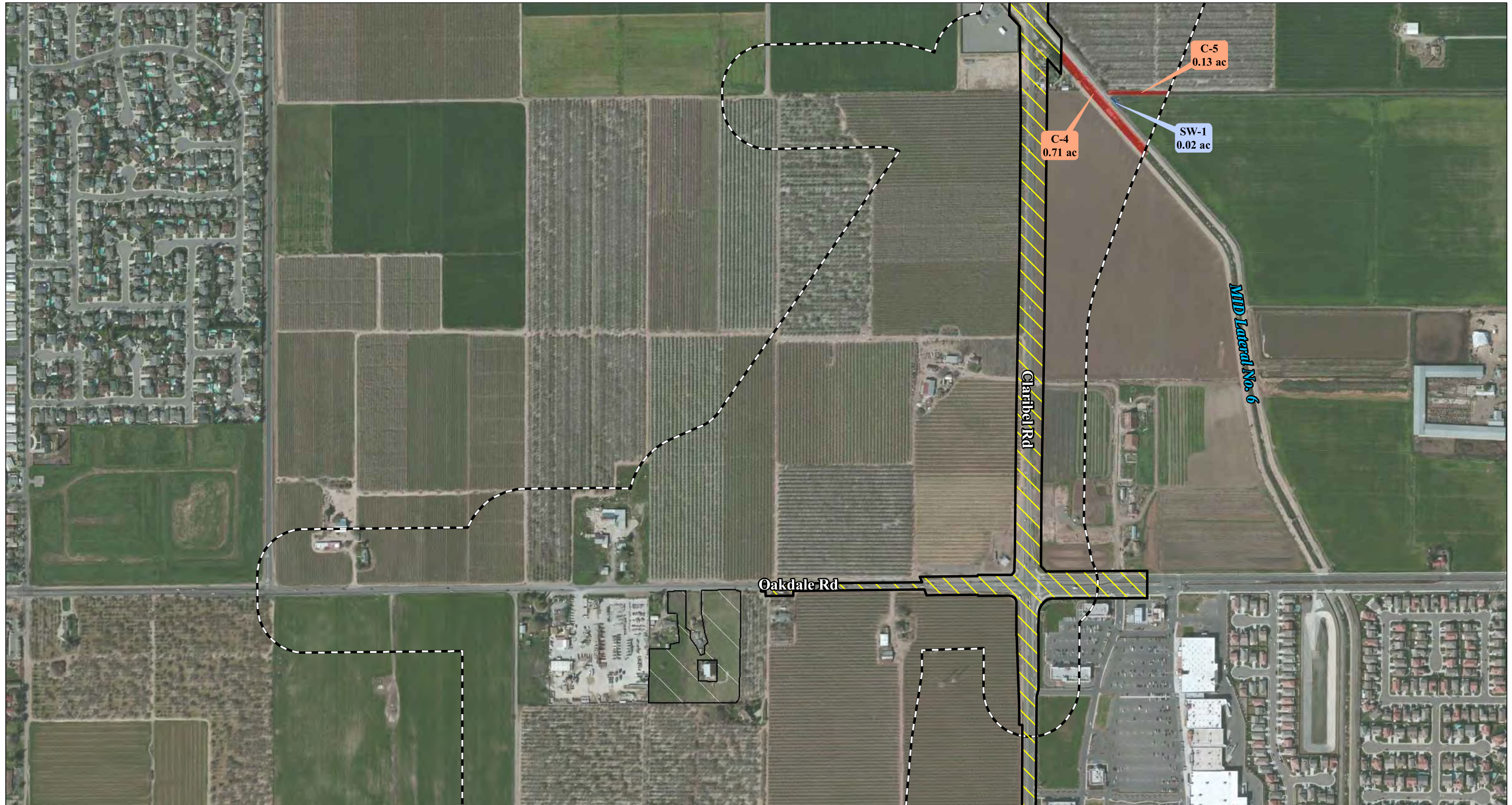
SOURCE: Basemap - ESRI Aerial Imagery (2011); Mapping - LSA Associates, Inc. (2014); ICF (2011)

F:\Dhg1302\GIS\Reports\Delin\delin\_11x17\_500ft.mxd (1/21/2015)



**Figure 3.3.1-2**  
**Page 3 of 25**

Preliminary Jurisdictional Delineation  
EA: 10-0S800, Project ID # 1000000263  
North County Corridor New State Route 108 Project  
Stanislaus County, California



**LEGEND**

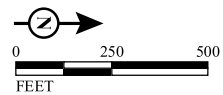
- Study Area
- Claribel Rd. Widening Project
- SR-219 Widening Project
- Converted to Orchard
- Irrigated Pasture

**Potential Jurisdictional Waters of the U.S. - (82.85 ac)**

- Non-Wetland Waters - (37.30 ac)
- Wetlands - (45.55 ac)
- Data Point
- Photo Point

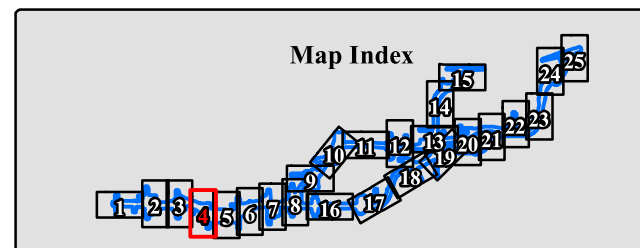
**Acronym Names**

- C - Canal
- D - Ditch
- P - Pond
- SW - Seasonal Wetland
- PM - Perennial Marsh
- IW - Irrigated Wetland



SOURCE: Basemap - ESRI Aerial Imagery (2011); Mapping - LSA Associates, Inc. (2014); ICF (2011)

F:\Dhg1302\GIS\Reports\Delin\delin\_11x17\_500ft.mxd (1/21/2015)



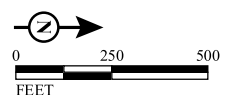
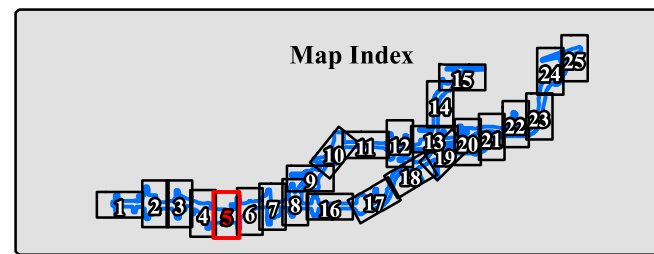
**Figure 3.3.1-2**  
**Page 4 of 25**

Preliminary Jurisdictional Delineation  
EA: 10-0S800, Project ID # 1000000263  
North County Corridor New State Route 108 Project  
Stanislaus County, California





LEGEND		Acronym Names	
	Study Area	C - Canal	
	Claribel Rd. Widening Project	D - Ditch	
	SR-219 Widening Project	P - Pond	
	Converted to Orchard	SW - Seasonal Wetland	
	Irrigated Pasture	PM - Perennial Marsh	
		IW - Irrigated Wetland	
<b>Potential Jurisdictional Waters of the U.S. - (82.85 ac)</b>			
	Non-Wetland Waters - (37.30 ac)		
	Wetlands - (45.55 ac)		
	Data Point		
	Photo Point		

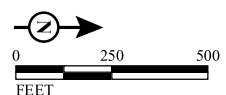


SOURCE: Basemap - ESRI Aerial Imagery (2011); Mapping - LSA Associates, Inc. (2014); ICF (2011)

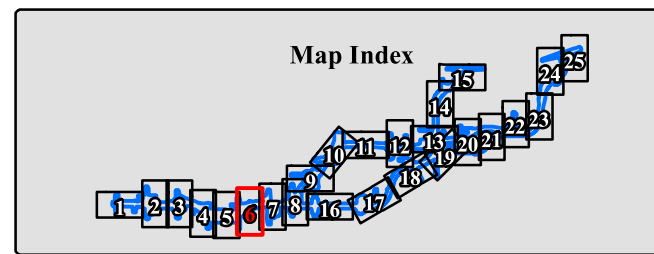
F:\Dhg1302\GIS\Reports\Delin\delin\_11x17\_500ft.mxd (1/21/2015)

**Figure 3.3.1-2**  
**Page 5 of 25**

Preliminary Jurisdictional Delineation  
EA: 10-0S800, Project ID # 1000000263  
North County Corridor New State Route 108 Project  
Stanislaus County, California



LEGEND		Acronym Names	
	Study Area	C - Canal	
	Claribel Rd. Widening Project	D - Ditch	
	SR-219 Widening Project	P - Pond	
	Converted to Orchard	SW - Seasonal Wetland	
	Irrigated Pasture	PM - Perennial Marsh	
		IW - Irrigated Wetland	
<b>Potential Jurisdictional Waters of the U.S. - (82.85 ac)</b>			
	Non-Wetland Waters - (37.30 ac)		
	Wetlands - (45.55 ac)		
	Data Point		
	Photo Point		



SOURCE: Basemap - ESRI Aerial Imagery (2011); Mapping - LSA Associates, Inc. (2014); ICF (2011)  
 I:\Dhg1302\GIS\Reports\Delin\delin\_11x17\_500ft.mxd (1/21/2015)

**Figure 3.3.1-2**  
**Page 6 of 25**  
 Preliminary Jurisdictional Delineation  
 EA: 10-0S800, Project ID # 1000000263  
 North County Corridor New State Route 108 Project  
 Stanislaus County, California



**LEGEND**

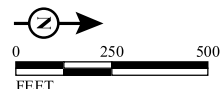
- Study Area
- Claribel Rd. Widening Project
- SR-219 Widening Project
- Converted to Orchard
- Irrigated Pasture

**Potential Jurisdictional Waters of the U.S. - (82.85 ac)**

- Non-Wetland Waters - (37.30 ac)
- Wetlands - (45.55 ac)
- Data Point
- Photo Point

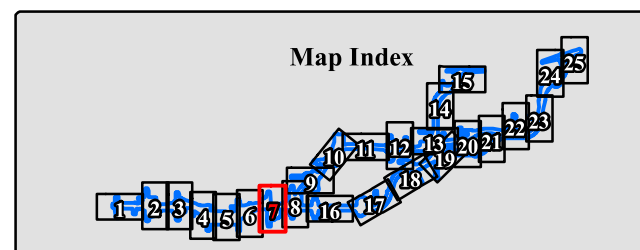
**Acronym Names**

- C - Canal
- D - Ditch
- P - Pond
- SW - Seasonal Wetland
- PM - Perennial Marsh
- IW - Irrigated Wetland



SOURCE: Basemap - ESRI Aerial Imagery (2011); Mapping - LSA Associates, Inc. (2014); ICF (2011)

F:\Dhg1302\GIS\Reports\Delin\delin\_11x17\_500ft.mxd (1/21/2015)



**Figure 3.3.1-2**  
**Page 7 of 25**

Preliminary Jurisdictional Delineation  
EA: 10-0S800, Project ID # 1000000263  
North County Corridor New State Route 108 Project  
Stanislaus County, California



**LEGEND**

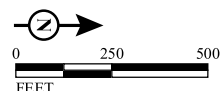
- Study Area
- Claribel Rd. Widening Project
- SR-219 Widening Project
- Converted to Orchard
- Irrigated Pasture

**Potential Jurisdictional Waters of the U.S. - (82.85 ac)**

- Non-Wetland Waters - (37.30 ac)
- Wetlands - (45.55 ac)
- Data Point
- Photo Point

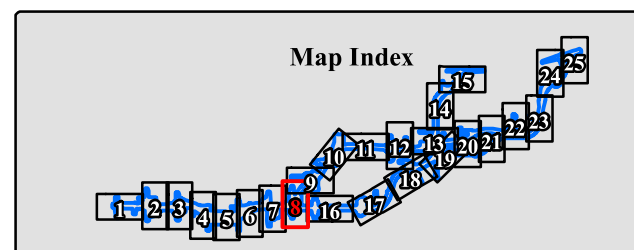
**Acronym Names**

- C - Canal
- D - Ditch
- P - Pond
- SW - Seasonal Wetland
- PM - Perennial Marsh
- IW - Irrigated Wetland



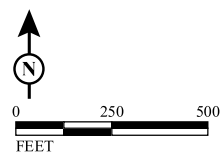
SOURCE: Basemap - ESRI Aerial Imagery (2011); Mapping - LSA Associates, Inc. (2014); ICF (2011)

F:\Dhg1302\GIS\Reports\Delin\delin\_11x17\_500ft.mxd (1/21/2015)



**Figure 3.3.1-2**  
**Page 8 of 25**

Preliminary Jurisdictional Delineation  
EA: 10-0S800, Project ID # 1000000263  
North County Corridor New State Route 108 Project  
Stanislaus County, California



**LEGEND**

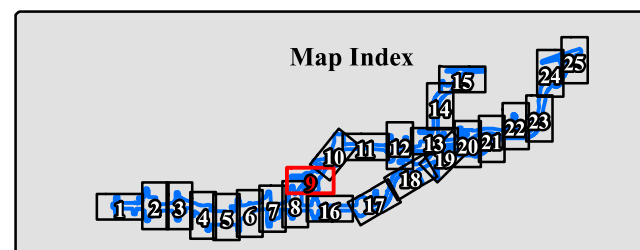
- Study Area
- Claribel Rd. Widening Project
- SR-219 Widening Project
- Converted to Orchard
- Irrigated Pasture

**Potential Jurisdictional Waters of the U.S. - (82.85 ac)**

- Non-Wetland Waters - (37.30 ac)
- Wetlands - (45.55 ac)
- Data Point
- Photo Point

**Acronym Names**

- C - Canal
- D - Ditch
- P - Pond
- SW - Seasonal Wetland
- PM - Perennial Marsh
- IW - Irrigated Wetland

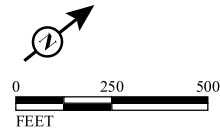


SOURCE: Basemap - ESRI Aerial Imagery (2011); Mapping - LSA Associates, Inc. (2014); ICF (2011)

F:\Dhg1302\GIS\Reports\Delin\delin\_11x17\_500ft.mxd (1/21/2015)

**Figure 3.3.1-2**  
**Page 9 of 25**

Preliminary Jurisdictional Delineation  
EA: 10-0S800, Project ID # 1000000263  
North County Corridor New State Route 108 Project  
Stanislaus County, California



**LEGEND**

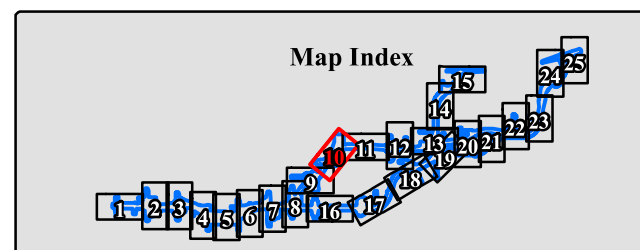
- Study Area
- Claribel Rd. Widening Project
- SR-219 Widening Project
- Converted to Orchard
- Irrigated Pasture

**Potential Jurisdictional Waters of the U.S. - (82.85 ac)**

- Non-Wetland Waters - (37.30 ac)
- Wetlands - (45.55 ac)
- Data Point
- Photo Point

**Acronym Names**

- C - Canal
- D - Ditch
- P - Pond
- SW - Seasonal Wetland
- PM - Perennial Marsh
- IW - Irrigated Wetland

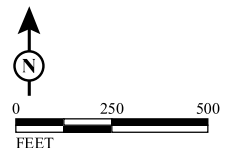
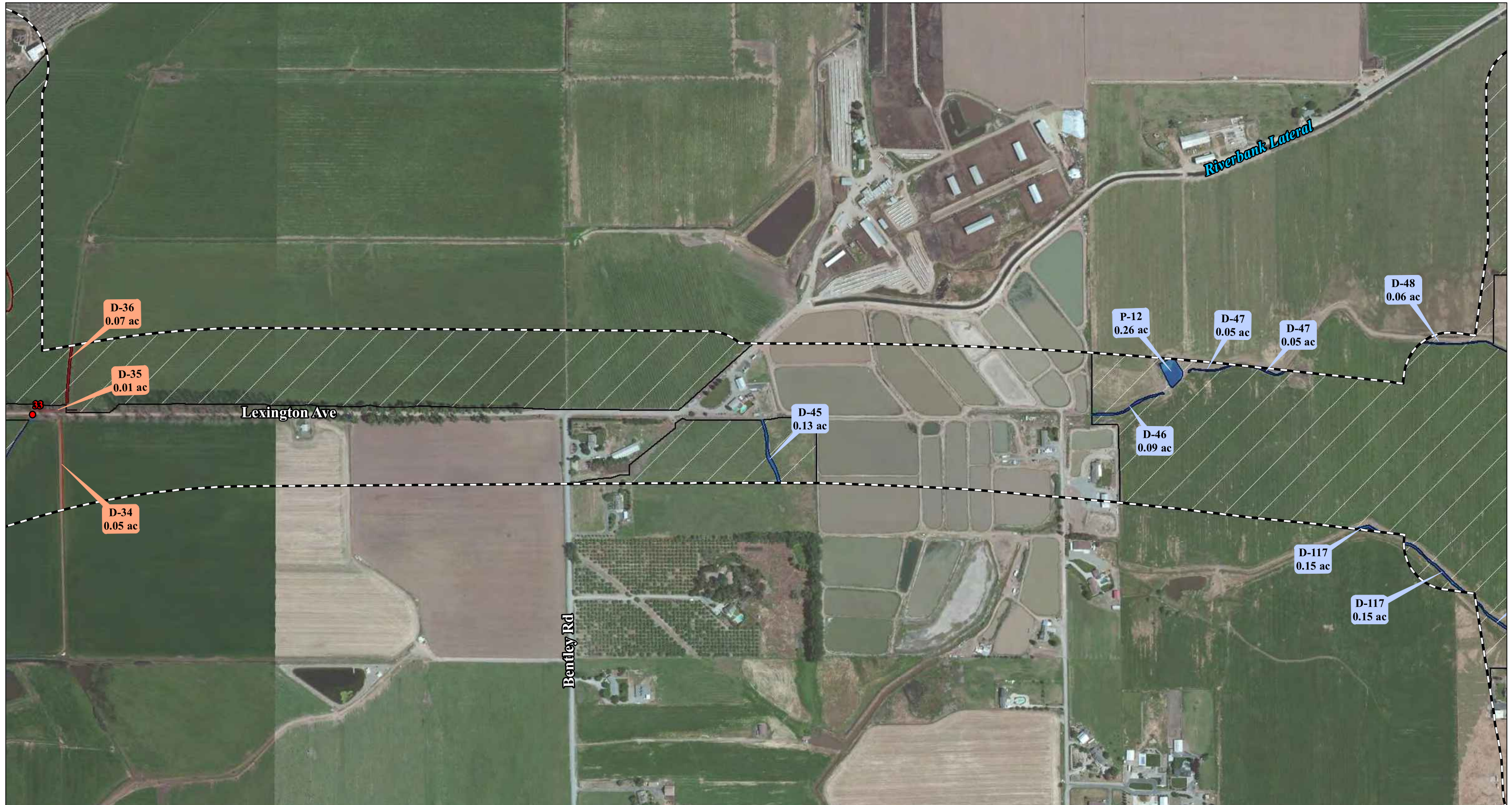


SOURCE: Basemap - ESRI Aerial Imagery (2011); Mapping - LSA Associates, Inc. (2014); ICF (2011)

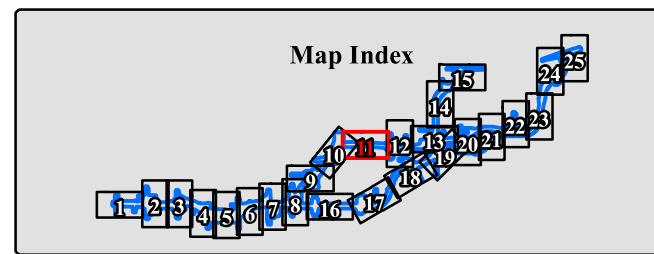
I:\Dhg1302\GIS\Reports\Delin\delin\_11x17\_500ft.mxd (1/21/2015)

**Figure 3.3.1-2**  
**Page 10 of 25**

Preliminary Jurisdictional Delineation  
EA: 10-0S800, Project ID # 1000000263  
North County Corridor New State Route 108 Project  
Stanislaus County, California



LEGEND		Acronym Names	
	Study Area	C - Canal	
	Claribel Rd. Widening Project	D - Ditch	
	SR-219 Widening Project	P - Pond	
	Converted to Orchard	SW - Seasonal Wetland	
	Irrigated Pasture	PM - Perennial Marsh	
		IW - Irrigated Wetland	
<b>Potential Jurisdictional Waters of the U.S. - (82.85 ac)</b>			
	Non-Wetland Waters - (37.30 ac)		
	Wetlands - (45.55 ac)		
	Data Point		
	Photo Point		



SOURCE: Basemap - ESRI Aerial Imagery (2011); Mapping - LSA Associates, Inc. (2014); ICF (2011)  
 I:\Dhg1302\GIS\Reports\Delin\delin\_11x17\_500ft.mxd (1/21/2015)

**Figure 3.3.1-2**  
**Page 11 of 25**  
 Preliminary Jurisdictional Delineation  
 EA: 10-0S800, Project ID # 1000000263  
 North County Corridor New State Route 108 Project  
 Stanislaus County, California