

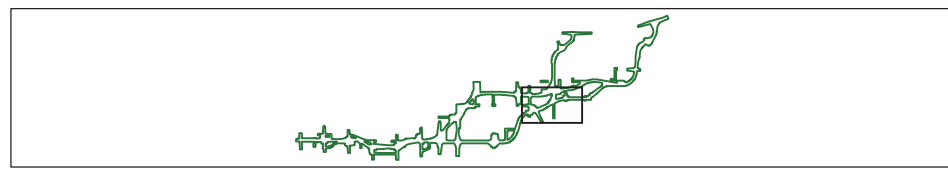
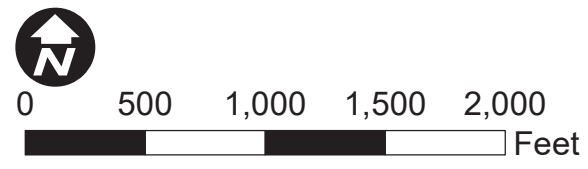
Match Line - See Page 5

Match Line - See Page 7

Match Line - See Page 12 and 13

V:\2046\_NCCOIR\_EIS\F3.2.6-2\_Receiver\_Locations Page 6.mxd

Source: ESRI Maps Online March 2011; 12/27/2016.

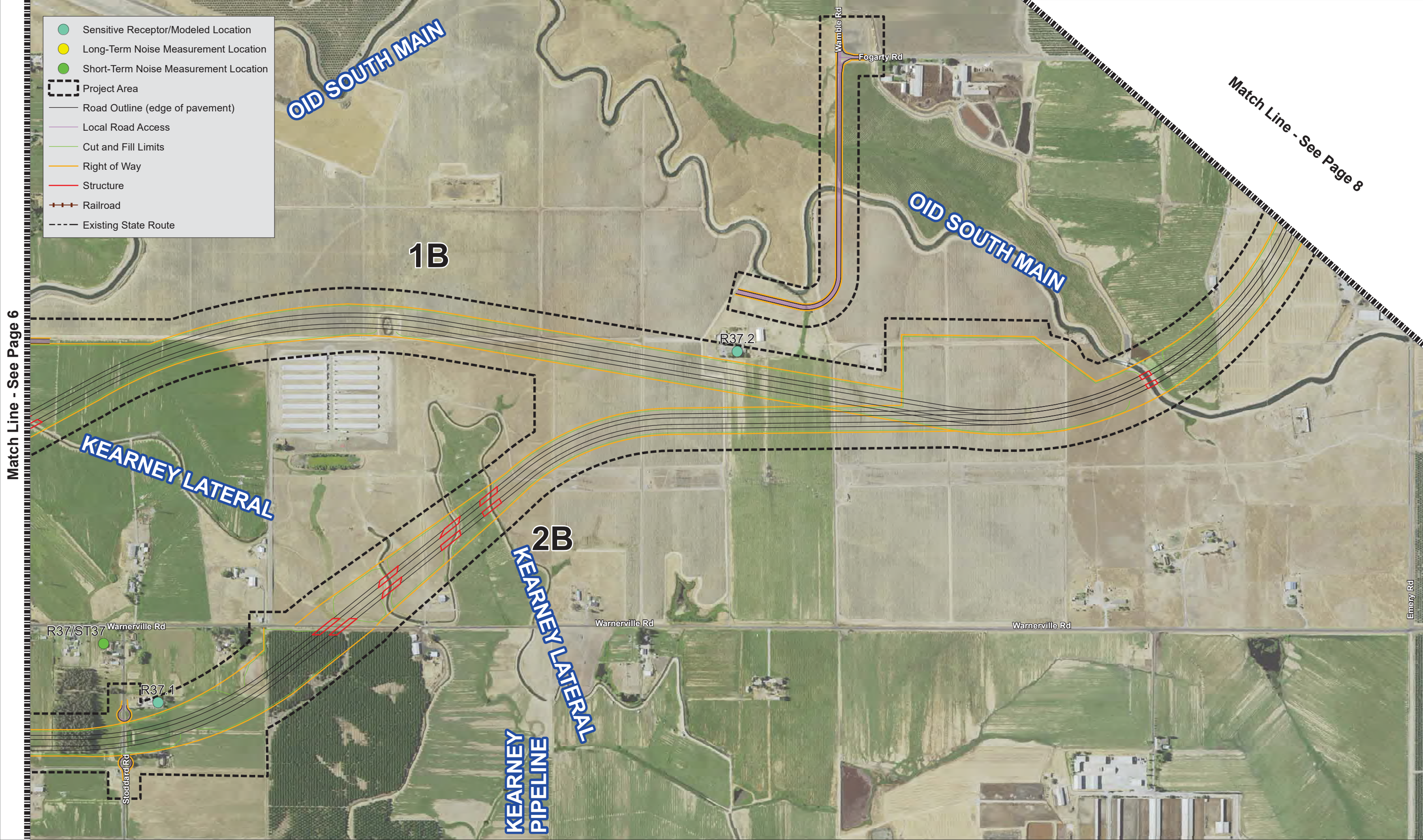


- Sensitive Receptor/Modeled Location
- Long-Term Noise Measurement Location
- Short-Term Noise Measurement Location
- Project Area
- Road Outline (edge of pavement)
- Local Road Access
- Cut and Fill Limits
- Right of Way
- Structure
- Railroad
- Existing State Route

**Figure 3.2.6-2**  
**Receiver Locations**  
 Page 6 of 14

EA: 10-0S8000, Project ID # 100000263  
 North County Corridor New State Route 108 Project  
 Stanislaus County, California

- Sensitive Receptor/Modeled Location
- Long-Term Noise Measurement Location
- Short-Term Noise Measurement Location
- Project Area
- Road Outline (edge of pavement)
- Local Road Access
- Cut and Fill Limits
- Right of Way
- Structure
- Railroad
- Existing State Route

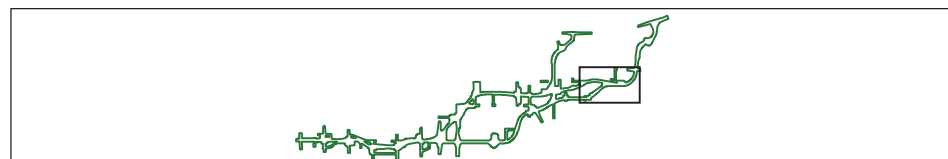
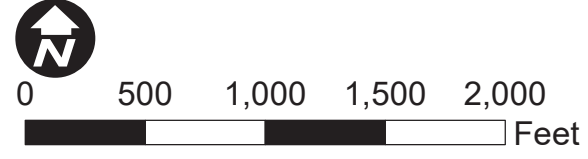


Match Line - See Page 6

Match Line - See Page 8

V:\2046\_NCCICR\_EISE\3.2.6-2 Receiver Locations\F3.2.6-2 Receiver Locations Page 7.mxd

Source: ESRI Maps Online March 2011; 12/27/2016.



**Figure 3.2.6-2**  
**Receiver Locations**  
**Page 7 of 14**

EA: 10-0S8000, Project ID # 100000263  
North County Corridor New State Route 108 Project  
Stanislaus County, California

SIERRA RAILROAD GRAY LATERAL





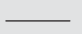
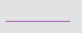
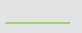
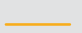
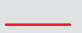


1B & 2B

OID SOUTH MAIN

Fogarty Rd

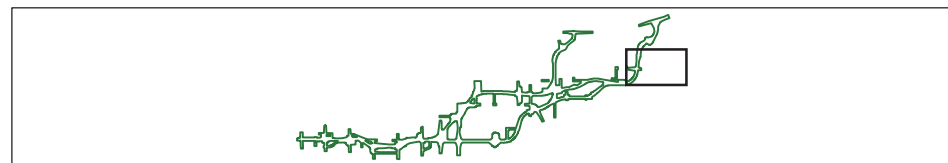
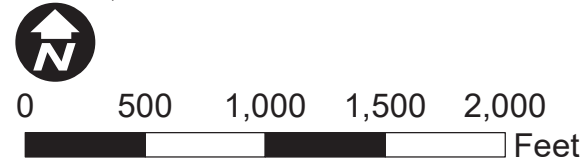
Emery Rd

Match Line - See Page 7

-  Sensitive Receptor/Modeled Location
-  Long-Term Noise Measurement Location
-  Short-Term Noise Measurement Location
-  Project Area
-  Road Outline (edge of pavement)
-  Local Road Access
-  Cut and Fill Limits
-  Right of Way
-  Structure
-  Railroad
-  Existing State Route

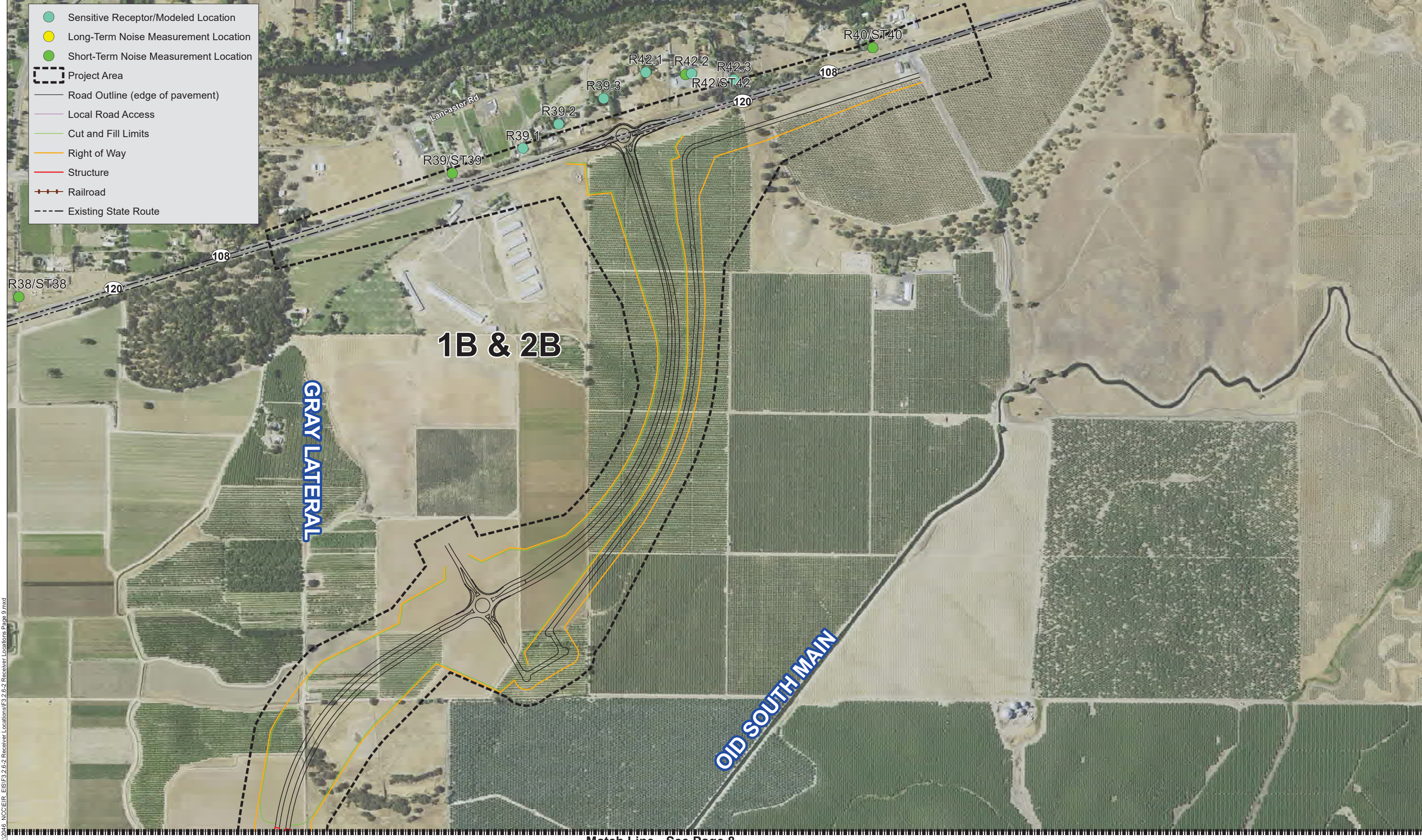
\\2046\_NCCIER\_EISE\F3.2.6-2\_Receiver\_Locations\_Page\_8.mxd

Source: ESRI Maps Online March 2011; 12/27/2016.



**Figure 3.2.6-2**  
**Receiver Locations**  
**Page 8 of 14**

EA: 10-0S8000, Project ID # 100000263  
North County Corridor New State Route 108 Project  
Stanislaus County, California



- Sensitive Receptor/Modeled Location
- Long-Term Noise Measurement Location
- Short-Term Noise Measurement Location
- Project Area
- Road Outline (edge of pavement)
- Local Road Access
- Cut and Fill Limits
- Right of Way
- Structure
- Railroad
- Existing State Route

R38/ST38  
108  
120

**1B & 2B**

**GRAY LATERAL**

**OLD SOUTH MAIN**

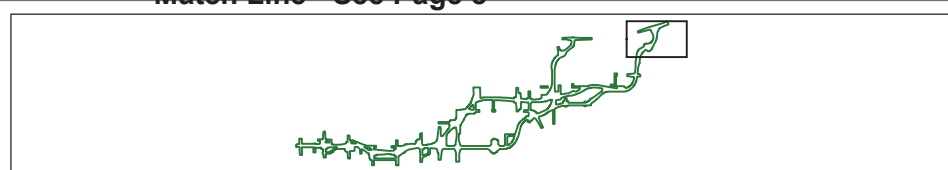
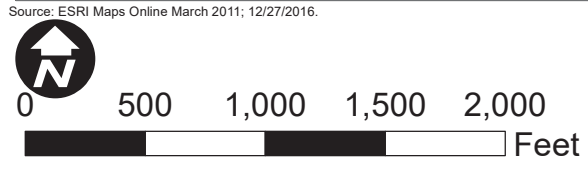
R40/ST40

R42.1 R42.2 R42.3  
R42/ST42

R39.1 R39.2 R39.3

R39/ST39

Match Line - See Page 8



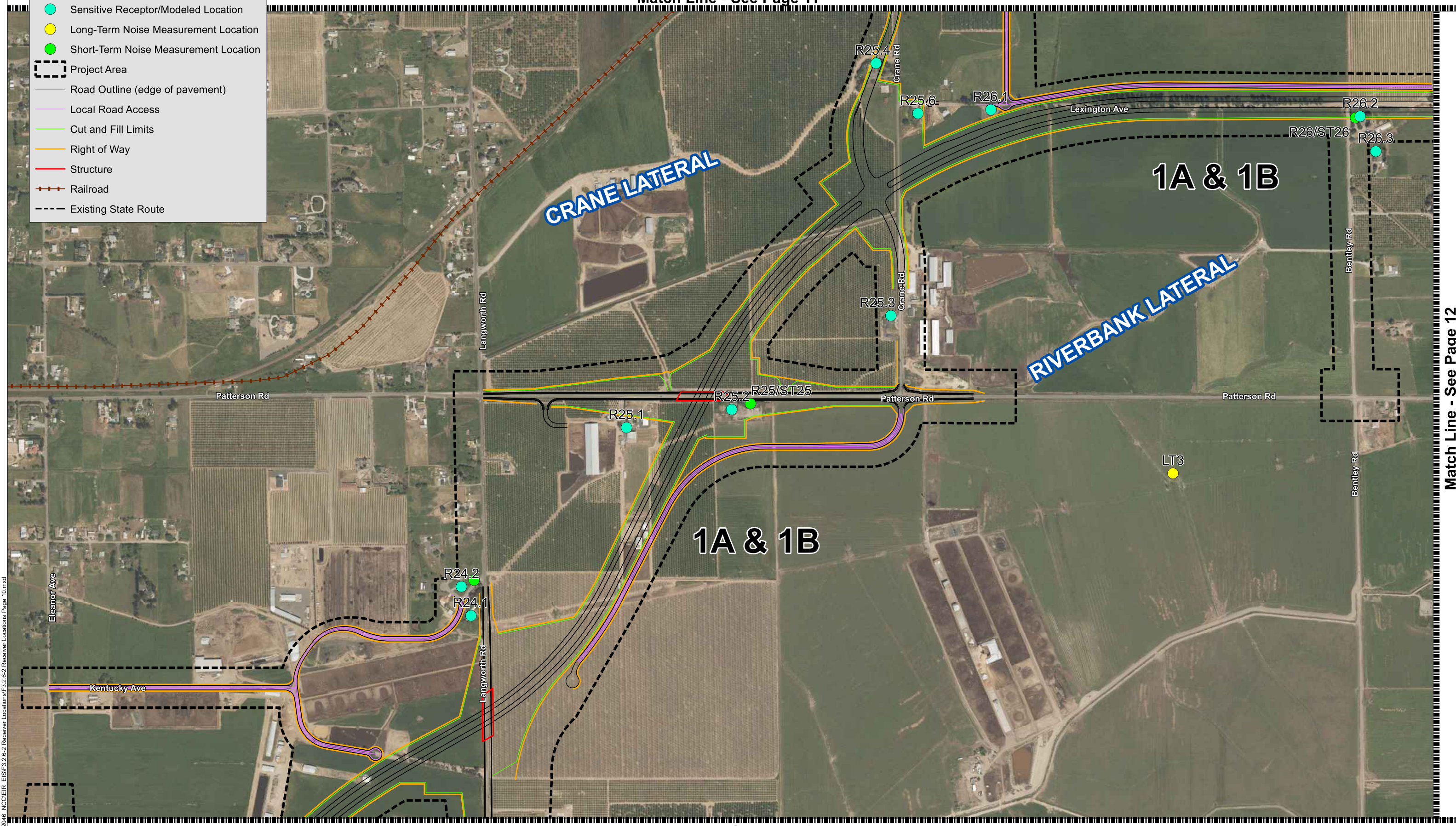
**Figure 3.2.6-2**  
**Receiver Locations**  
**Page 9 of 14**

V:\2016\NCCIEIR\ESIF\3.2.6-2 Receiver Locations\F3.2.6-2 Receiver Locations Page 9.mxd

Source: ESRI Maps Online March 2011; 12/27/2016.

Match Line - See Page 11

- Sensitive Receptor/Modeled Location
- Long-Term Noise Measurement Location
- Short-Term Noise Measurement Location
- Project Area
- Road Outline (edge of pavement)
- Local Road Access
- Cut and Fill Limits
- Right of Way
- Structure
- Railroad
- Existing State Route

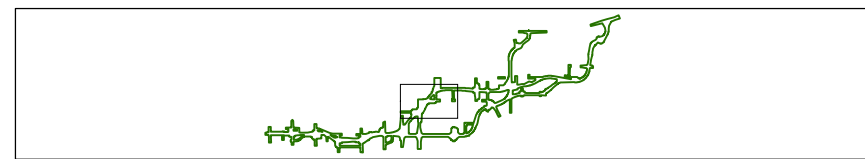
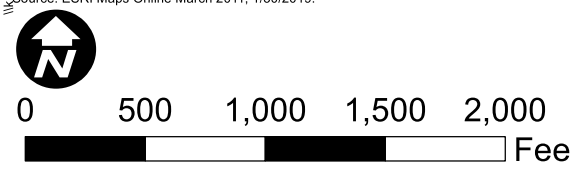


Match Line - See Page 4

Match Line - See Page 12

\\gis\sls\2016\_NCCIEIR\_EIS\F3.2.6-2\_Receiver\_Locations\F3.2.6-2\_Receiver\_Locations Page 10.mxd

Source: ESRI Maps Online March 2011; 1/30/2019.



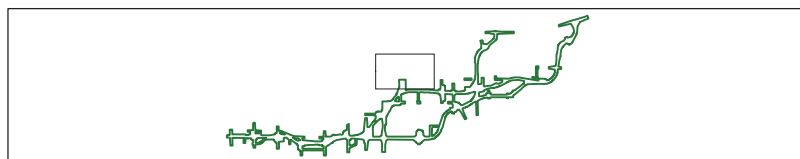
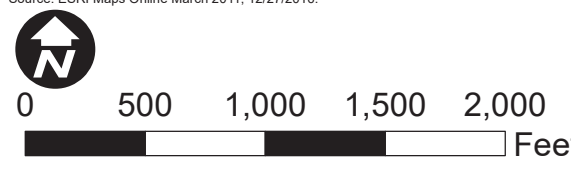
**Figure 3.2.6-2**  
**Receiver Locations**  
 Page 10 of 14

EA: 10-0S8000, Project ID # 100000263  
 North County Corridor New State Route 108 Project  
 Stanislaus County, California

- Sensitive Receptor/Modeled Location
- Long-Term Noise Measurement Location
- Short-Term Noise Measurement Location
- Project Area
- Road Outline (edge of pavement)
- Local Road Access
- Cut and Fill Limits
- Right of Way
- Structure
- Railroad
- Existing State Route



Match Line - See Page 10



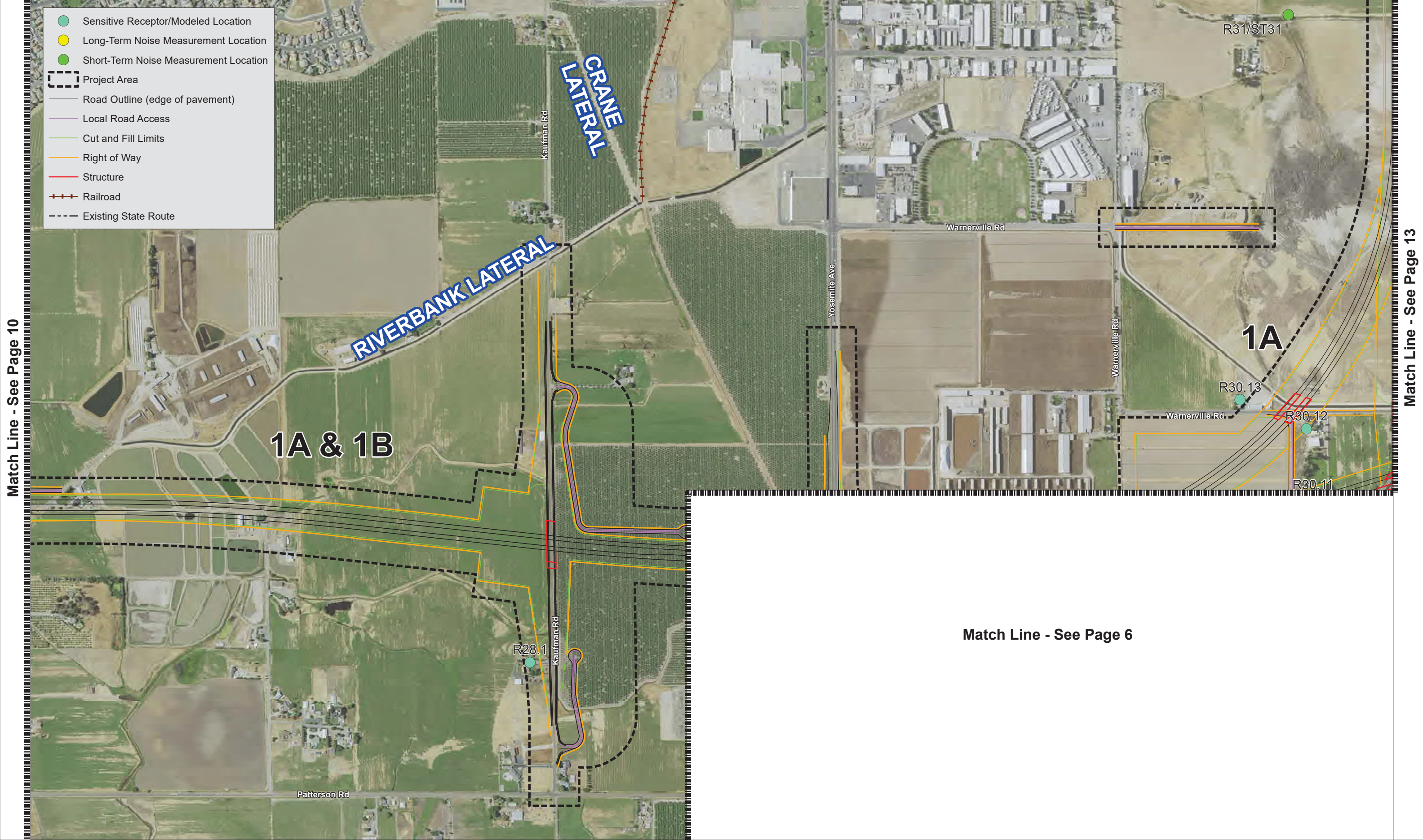
**Figure 3.2.6-2**  
**Receiver Locations**  
**Page 11 of 14**

EA: 10-0S8000, Project ID # 100000263  
 North County Corridor New State Route 108 Project  
 Stanislaus County, California

V:\2016\NCCO\EA\GIS\F3.2.6-2 Receiver Locations\F3.2.6-2 Receiver Locations Page 11.mxd

Source: ESRI Maps Online March 2011; 12/27/2016.

- Sensitive Receptor/Modeled Location
- Long-Term Noise Measurement Location
- Short-Term Noise Measurement Location
- Project Area
- Road Outline (edge of pavement)
- Local Road Access
- Cut and Fill Limits
- Right of Way
- Structure
- Railroad
- Existing State Route



Match Line - See Page 10

Match Line - See Page 13

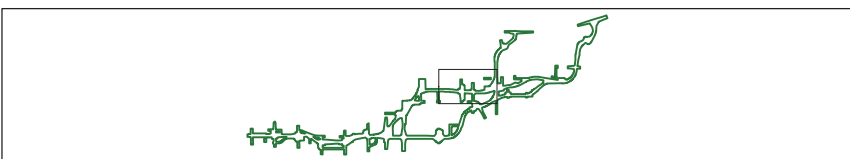
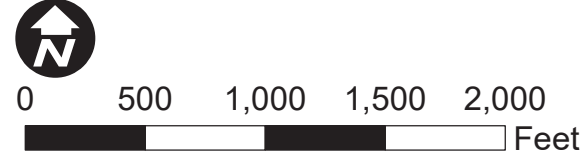
Match Line - See Page 6

**1A & 1B**

**1A**

V:\2046\_NCCICR\_EIS\F3.2.6-2\_Receiver\_Locations\F3.2.6-2\_Receiver\_Locations\_Page\_12.mxd

Source: ESRI Maps Online March 2011; 12/27/2016.



**Figure 3.2.6-2  
Receiver Locations  
Page 12 of 14**

EA: 10-0S8000, Project ID # 100000263  
North County Corridor New State Route 108 Project  
Stanislaus County, California

Match Line - See Page 14

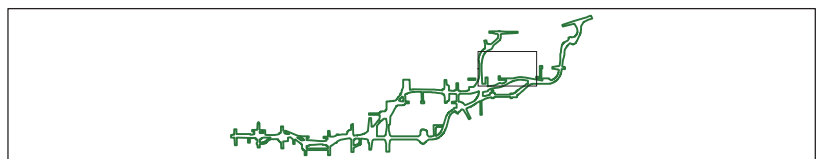
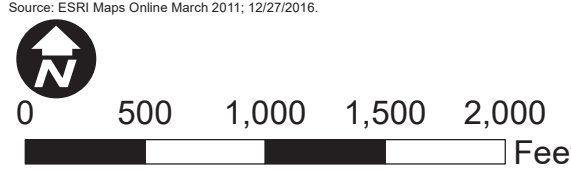
- Sensitive Receptor/Modeled Location
- Long-Term Noise Measurement Location
- Short-Term Noise Measurement Location
- Project Area
- Road Outline (edge of pavement)
- Local Road Access
- Cut and Fill Limits
- Right of Way
- Structure
- Railroad
- Existing State Route



Match Line - See Page 12

Match Line - See Page 7

Match Line - See Page 6



**Figure 3.2.6-2**  
**Receiver Locations**  
**Page 13 of 14**

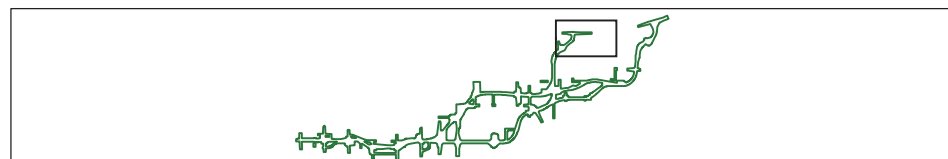
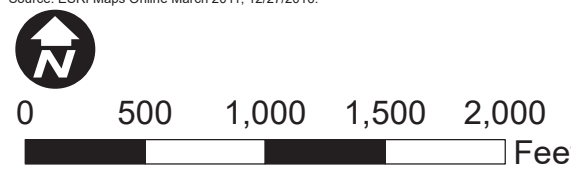
Source: ESRI Maps Online March 2011; 12/27/2016.



- Sensitive Receptor/Modeled Location
- Long-Term Noise Measurement Location
- Short-Term Noise Measurement Location
- Project Area
- Road Outline (edge of pavement)
- Local Road Access
- Cut and Fill Limits
- Right of Way
- Structure
- Railroad
- Existing State Route



Match Line - See Page 13



**Figure 3.2.6-2**  
**Receiver Locations**  
**Page 14 of 14**

EA: 10-0S8000, Project ID # 100000263  
 North County Corridor New State Route 108 Project  
 Stanislaus County, California

\2\046 NCCIER EIS\F3.2.6-2 Receiver Locations Page 14.mxd  
 Source: ESRI Maps Online March 2011; 12/27/2016.