





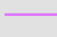

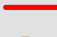


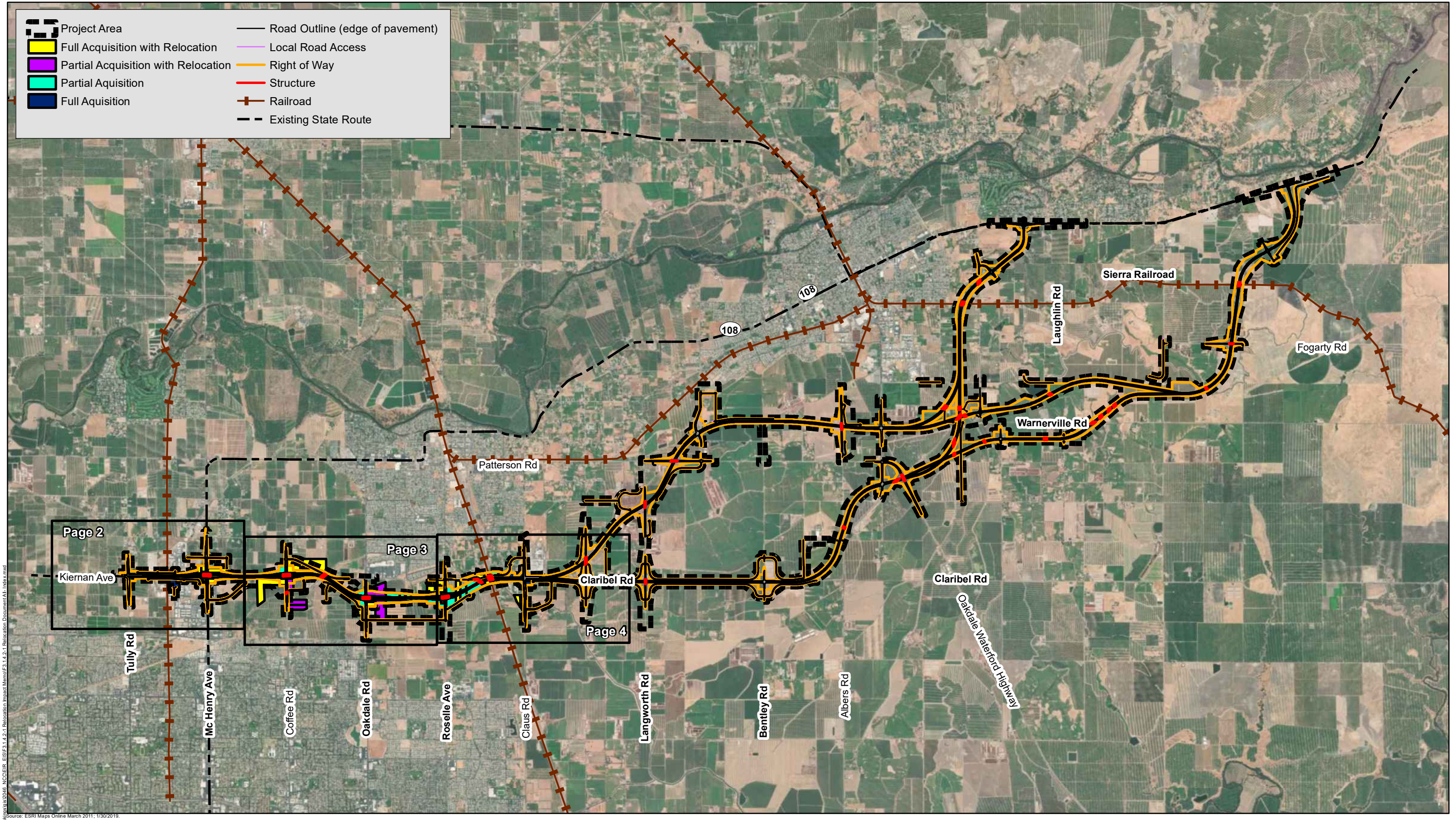
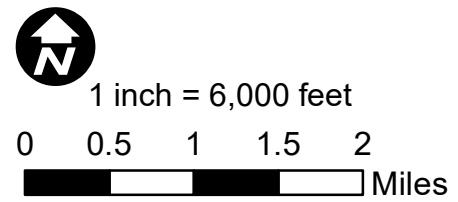


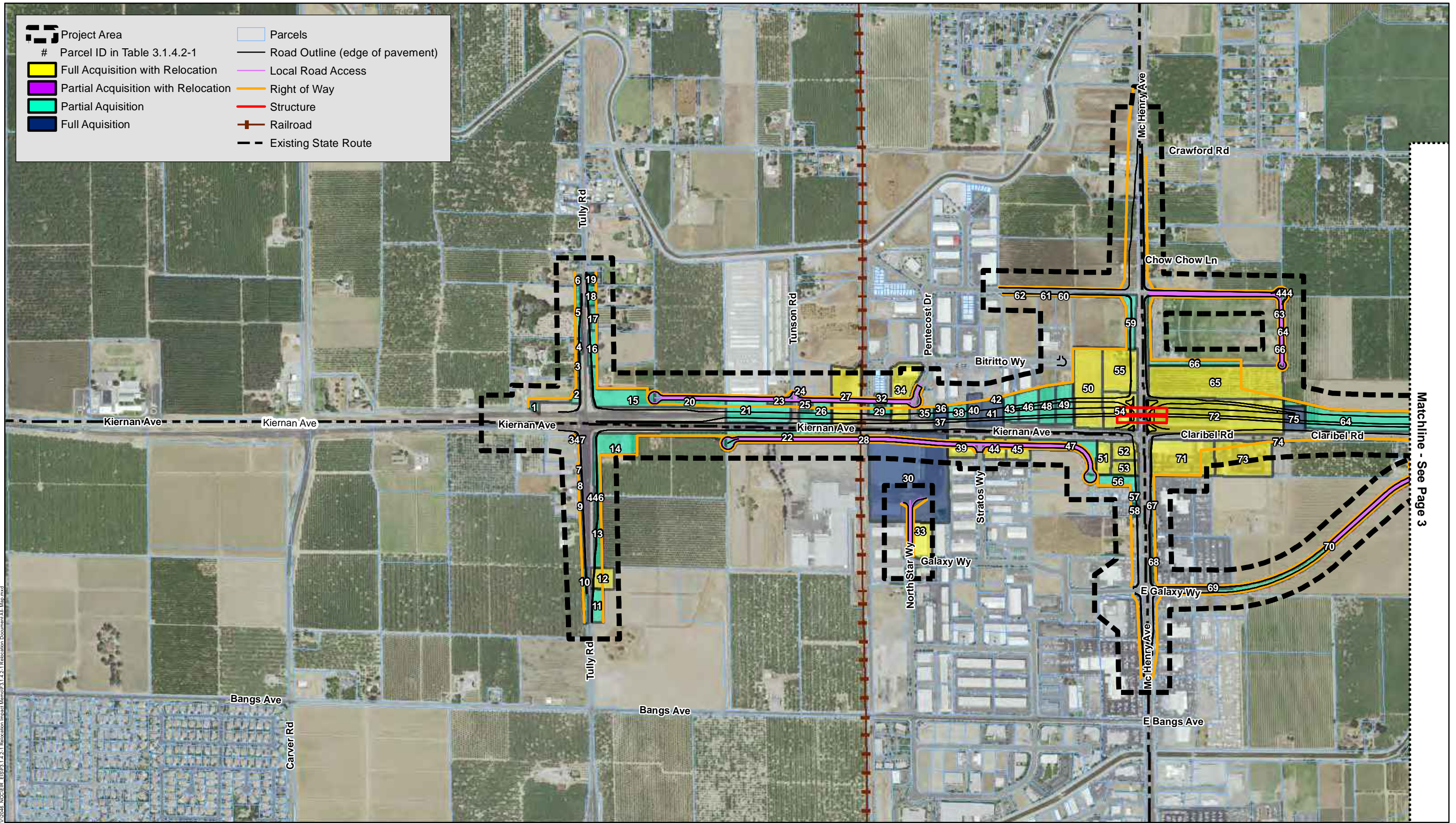
-  Project Area
-  Full Acquisition with Relocation
-  Partial Acquisition with Relocation
-  Partial Acquisition
-  Full Acquisition
-  Road Outline (edge of pavement)
-  Local Road Access
-  Right of Way
-  Structure
-  Railroad
-  Existing State Route



Source: ESRI Maps Online March 2011; 1/30/2019  
 \GIS\Map\Code\_NCCEIR\_EIS\3.1.4.2-1 Relocation Document\AI\_Index.mxd

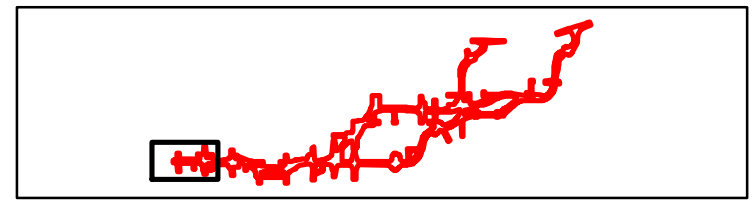
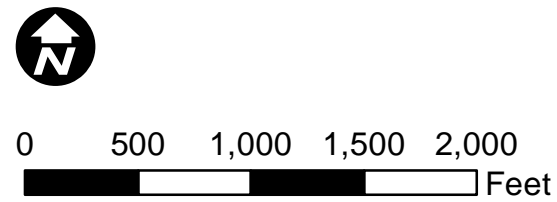


**FIGURE 3.1.4.2-1**  
**Common Potential Acquisition/Relocation for All Four Build Alternatives**  
**Page 1 of 4**  
 EA: 10-0S8000, Project ID # 1000000263  
 North County Corridor New State Route 108 Project  
 Stanislaus County, California

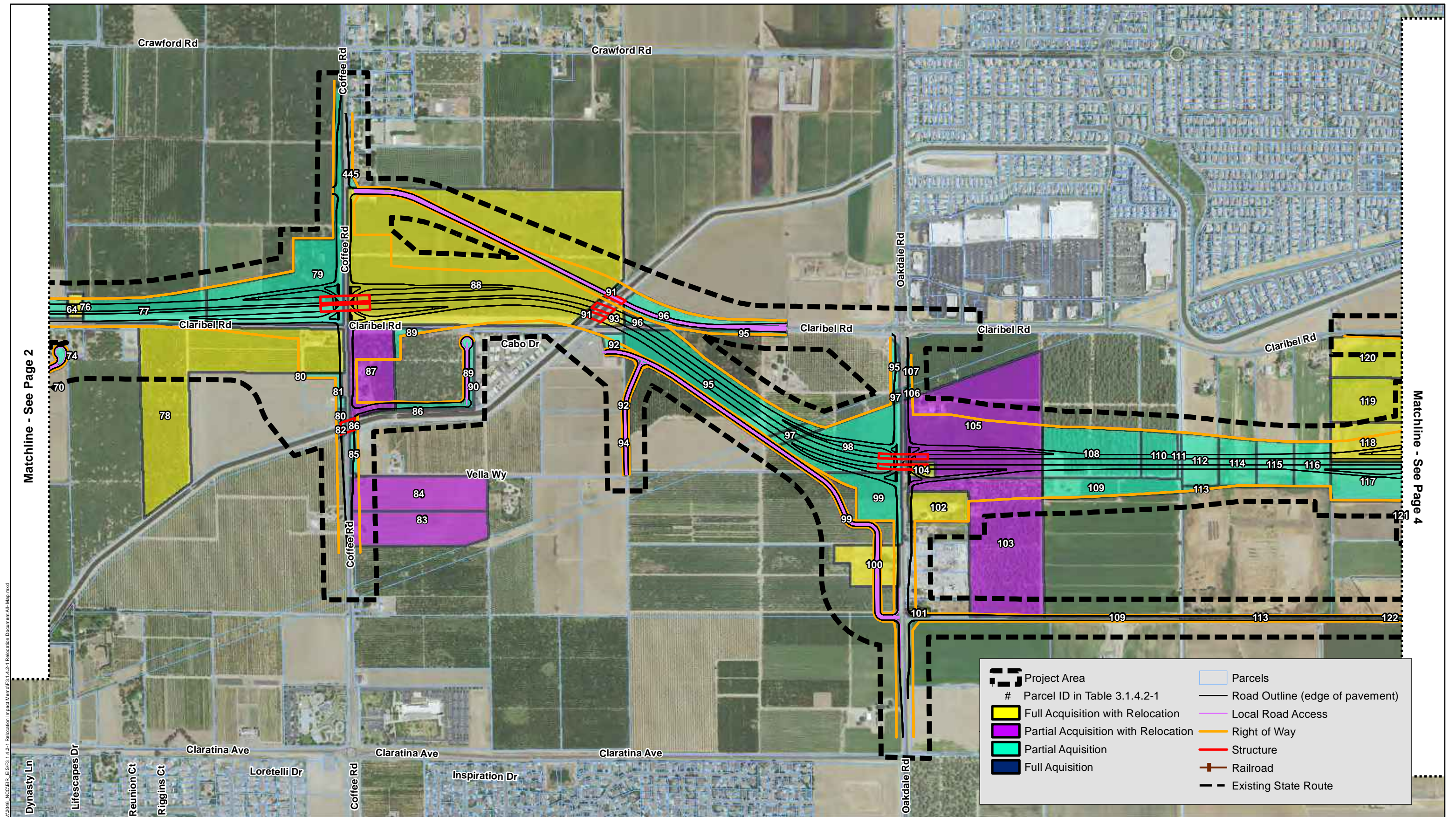


V:\2016\_NCC\ER\_EIS\F3.1.4.2-1\_Relocation\_Impact\_Memo\F3.1.4.2-1\_Relocation\_Document\_A1\_Map.mxd

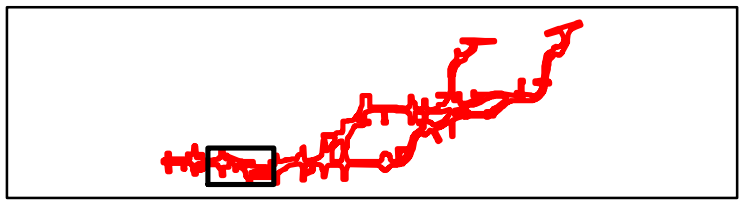
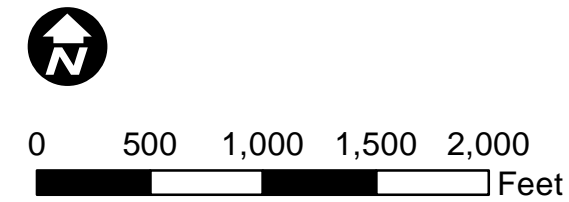
Source: ESRI Maps Online March 2011; 2/19/2016.



**FIGURE 3.1.4.2-1**  
**Common Potential Acquisition/Relocation for All Four Build Alternatives**  
 Page 2 of 4  
 EA: 10-0S8000, Project ID # 100000263  
 North County Corridor New State Route 108 Project  
 Stanislaus County, California

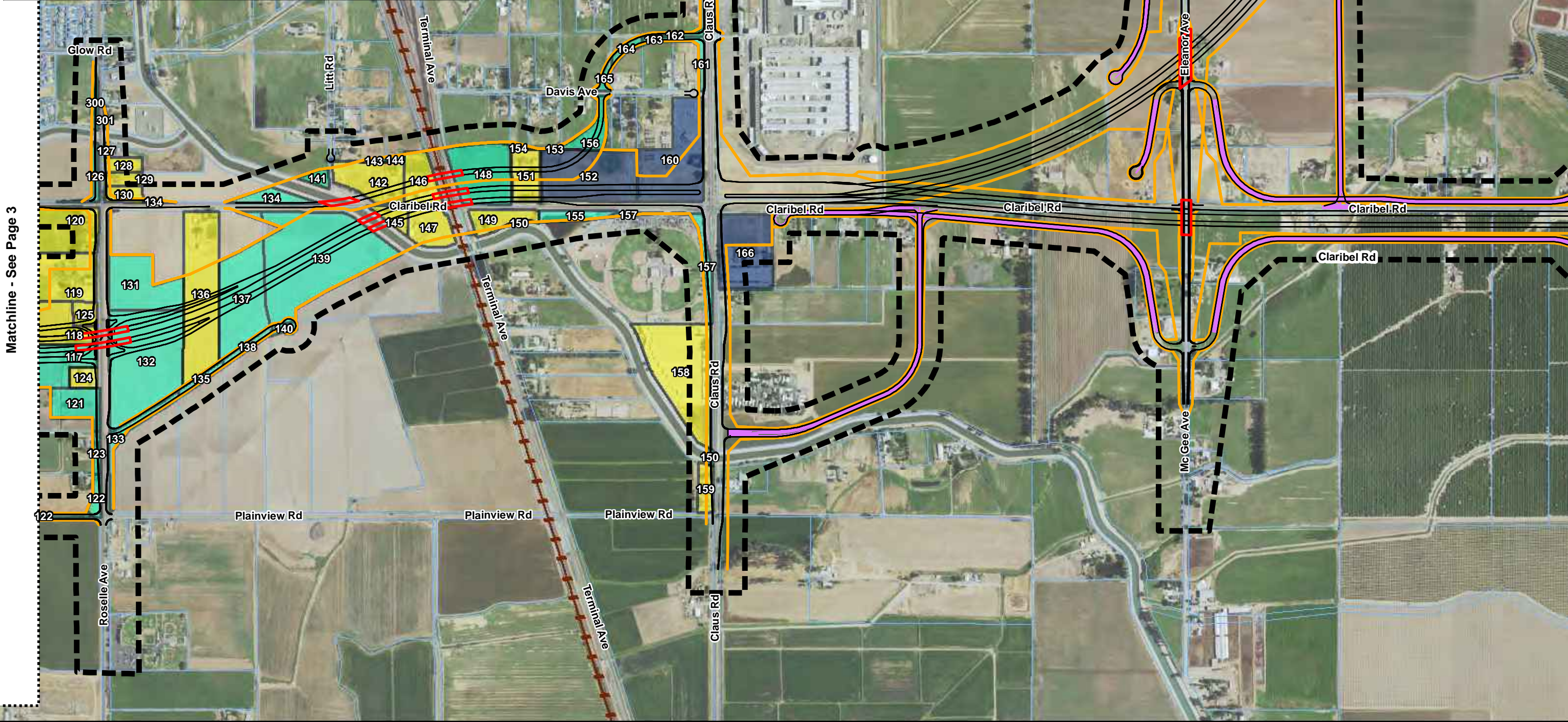


V:\2016\_NCCER\_EIS\F3.1.4.2-1\_Recreation\_Impact\_Management\F3.1.4.2-1\_Recreation\_Document\_A1\_Map.mxd  
 Source: ESRI Maps Online March 2011; 2/19/2016.



**FIGURE 3.1.4.2-1**  
**Common Potential Acquisition/Relocation for All Four Build Alternatives**  
 Page 3 of 4  
 EA: 10-0S8000, Project ID # 100000263  
 North County Corridor New State Route 108 Project  
 Stanislaus County, California

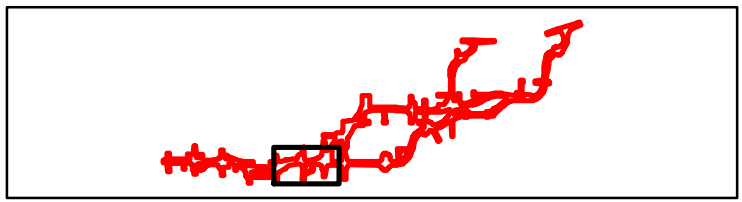
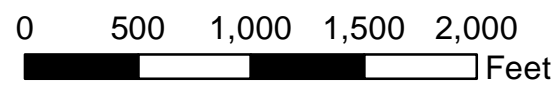
	Project Area		Parcels
	# Parcel ID in Table 3.1.4.2-1		Road Outline (edge of pavement)
	Full Acquisition with Relocation		Local Road Access
	Partial Acquisition with Relocation		Right of Way
	Partial Acquisition		Structure
	Full Acquisition		Railroad
			Existing State Route



Matchline - See Page 3

V:\2016\_NCC\EA\ES&F\1.4.2-1\_Relocation\_Impact\_Memo\F3.1.4.2-1\_Relocation\_Document\F1\_Map.mxd

Source: ESRI Maps Online March 2011; 2/19/2016.



**FIGURE 3.1.4.2-1**  
**Common Potential Acquisition/Relocation for All Four Build Alternatives**  
 Page 4 of 4  
 EA: 10-0S8000, Project ID # 1000000263  
 North County Corridor New State Route 108 Project  
 Stanislaus County, California