

**Appendix D:  
Noise Supporting Information**



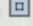
THIS PAGE INTENTIONALLY LEFT BLANK



# Recology BVON 4875.0001

Noise Measurement Locations

## Legend

-  Feature 1
-  Feature 2
-  Feature 3

ST-4

ST-2

ST-3

ST-1

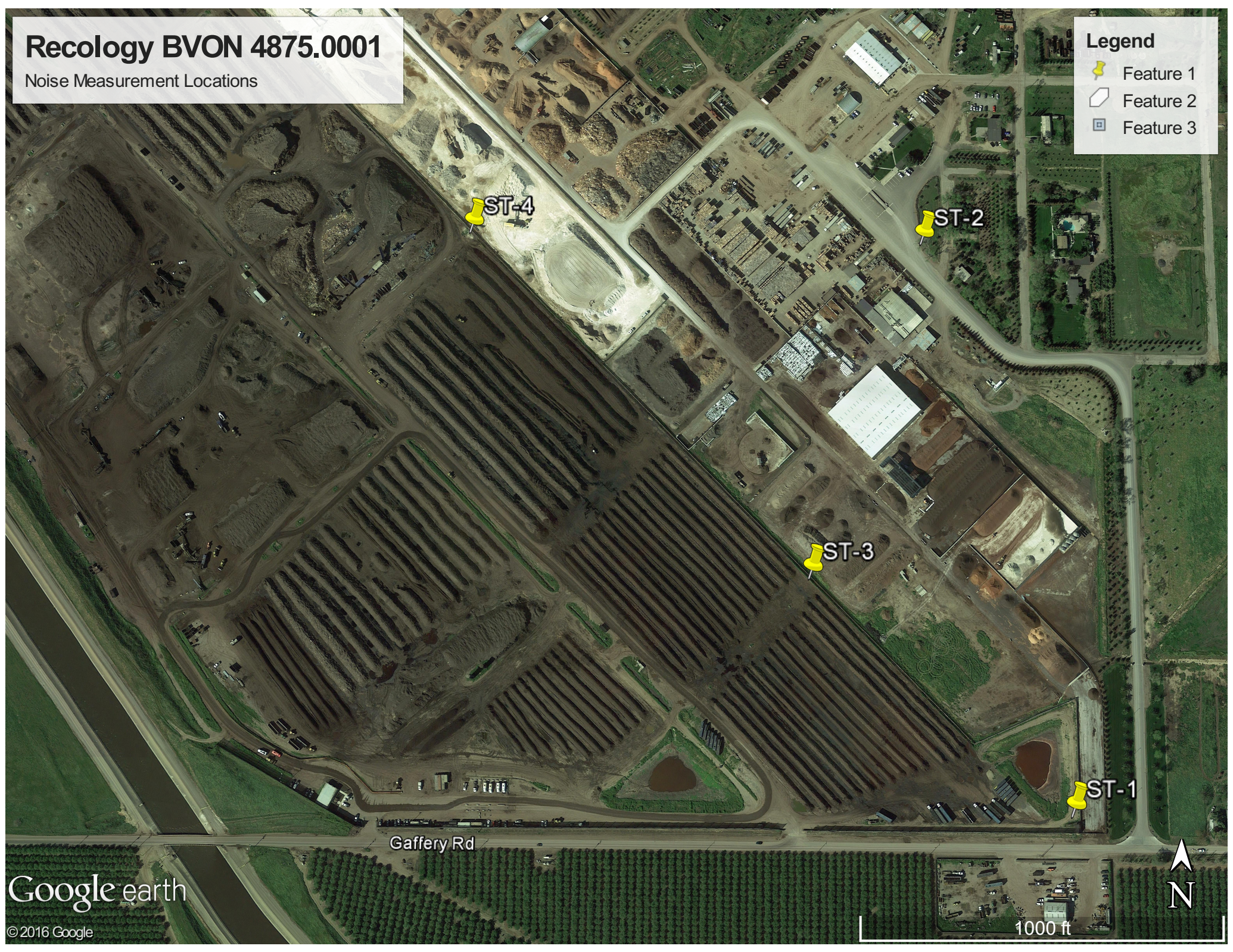
Gaffery Rd

Google earth

© 2016 Google



1000 ft





Project Number: 4875-0001  
 Project Name: Rewlogy BVON  
 Test Personnel: Dana DiPietro

Sheet 1 of 1

### Noise Measurement Survey

Site Number: ST-1 Date: 9/13/16 Time: From 15:00 To 15:15

Site Location: Southeast corner of the project Area, north end adjacent to Gaffney Rd. Clear day, with light winds from the north.

Primary Noise Sources: Rewlogy Equipment, Industrial traffic on Gaffney Rd. Small aircraft overhead

#### Measurement Results

	dBA
Leq	45.7
Lmax	68.5
Lmin	35.6
Lpeak	-
L5	56.7
L10	51.1
L50	45.2
L90	39.5
SEL	

#### Observed Noise Sources/Events

Time	Noise Source/Event	dBA
15:06:15	Truck on Gaffney Rd.	49.6
15:07:45	Truck on Gaffney Rd.	51.3
15:10:30	Pump starts across street	48.2

#### Photos taken:

- Comments: 1. ST-1 facing North  
2. ST-1 facing East  
3. ST-1 facing South  
4. ST-1 facing west

#### Traffic Description:

Gaffney Rd / 2 lane / posted 25 mph / actual 35  
Cars: 5 cars, 2 trucks

Equipment: Larson Davis LXT  
 Settings: A-Weighted  Other

Calibration Offset: .12 dBA  
 Slow  Fast  Windscreen

#### Atmospheric Conditions:

Maximum Wind Velocity (mph)	Average Wind Velocity (mph)	Temperature (F)	Relative Humidity (%)
<u>6.7 mph</u>	<u>3.8 mph</u>	<u>73°</u>	<u>34%</u>
Comments:			



Project Number: 4875-0001

Sheet 1 of 1

Project Name: Recology BVON

Test Personnel: Dana DePietro

### Noise Measurement Survey

Site Number: ST-2 Date: 9/14/16 Time: From 12:00 To 12:15

Site Location: Adjacent Edge of property on Eastern side of Road, South of Scales

Primary Noise Sources: Idling trucks, Passing trucks, Recology Equipment (tractors, etc), Hammering + Air power tools from adjacent construction yard to the west.

#### Measurement Results

	dBA
Leq	73.1
Lmax	94.1
Lmin	53.7
Lpeak	—
L5	75.3
L10	75.1
L50	70.3
L90	58.3
SEL	

#### Observed Noise Sources/Events

Time	Noise Source/Event	dBA
1:31	Truck Drives By	60.2
2:27	"	66.1
3:49	"	71.5
6:4	loud Motor cycle	78.0
7:04	Truck pulls up and Idles	82.0
7:54	" Air Brake Release	78.0

91.00

#### Photos Taken:

- Comments:
1. ST-1 facing North
  2. ST-1 facing East
  3. ST-1 facing South
  4. ST-1 facing west

#### Traffic Description

Traffic around Truck Scale  
 1 lane / No speed limit / Approx 15 mph  
 4 trucks / 2 cars

Equipment: Larsen Davis LXT  
 Settings: A-Weighted  Other

Calibration Offset: .03 dBA  
 Slow  Fast  Windscreen

#### Atmospheric Conditions:

Maximum Wind Velocity (mph)	Average Wind Velocity (mph)	Temperature (F)	Relative Humidity (%)
1.7 mph	1 mph	83°	43 %
Comments:			

Project Number: 4875 . 0001  
 Project Name: Resolving BV08  
 Test Personnel: Janet D. Petro

Sheet 1 of 1

### Noise Measurement Survey

Site Number: ST-3 Date: 9/14/16 Time: From 12:30 To 12:45

Site Location: Eastern edge of property, 1/3 way north at intersection of first E-W pile-break

Primary Noise Sources: Heavy construction Equipment to the north, distant traffic to the south, light Equipment use to the East + West

#### Measurement Results

	dB(A)
Leq	49.6
Lmax	65.0
Lmin	39.2
Lpeak	—
L5	55.4
L10	52.2
L50	45.3
L90	41.6
SEL	

#### Observed Noise Sources/Events

Time	Noise Source/Event	dB(A)
5:31	Airplane flyover	81.8

Comments: Photos taken:  
 1. ST-3 facing North  
 2. ST-3 facing East  
 3. ST-3 facing South  
 4. ST-3 facing West

Traffic observations:  
 None, aside from A101 and Equipment in the distance

Equipment: Larson Davis LXT  
 Settings: A-Weighted  Other

Calibration Offset: .03 dB(A)  
 Slow  Fast  Windscreen

#### Atmospheric Conditions:

Maximum Wind Velocity (mph)	Average Wind Velocity (mph)	Temperature (F)	Relative Humidity (%)
1.7 mph	.0	87.2	43%
Comments:			



Project Number: 4875 . 0001  
 Project Name: Recology BVON  
 Test Personnel: Dans DiPietro

### Noise Measurement Survey

Site Number: ST-4 Date: 9/14 Time: From 1:00 To 1:15

Site Location: Property Eastern Boundary approximately 1/2 way to NE corner.  
Active processing zone with Heavy Equipment use on all sides.

Primary Noise Sources: North: large mechanical Piler / East: 3 Dryrock crushing machines and a Cat tractor (off-site property) / South, Cat Backhoe + ~~the~~ truck / West, 3 Cat tractors, 2 trucks and 2 large conveyor assemblies.  
 ↳ All Cat tractors have loud Back-Up warning alarms

**Measurement Results**

	dB(A)
Leq	69.3
Lmax	70.3
Lmin	65.6
Lpeak	-
L5	72.3
L10	71.1
L50	68.6
L90	66.9
SEL	

**Observed Noise Sources/Events**

Time	Noise Source/Event	dB(A)
5:41	Truck drives by	71.1

Photos taken:  
 Comments: 1. ST-4 facing North  
 2. ST-4 facing East  
 3. ST-4 facing South  
 4. ST-4 facing West

Traffic observations:  
 (See Above: Heavy machinery in use all around immediate vicinity)

Equipment: Larsen Davis LXT  
 Settings: A-Weighted  Other

Calibration Offset: .01 dB(A)  
 Slow  Fast  Windscreen

**Atmospheric Conditions:**

Maximum Wind Velocity (mph)	Average Wind Velocity (mph)	Temperature (F)	Relative Humidity (%)
1.8 mph	1.0 mph	87.2	43%
Comments:			



Photograph 1: View from ST-1; facing north



Photograph 2: View from ST-1; facing east





Photograph 3: View from ST-1; facing south



Photograph 4: View from ST-1; facing west



Photograph 5: View from ST-2; facing north



Photograph 6: View from ST-2; facing east





Photograph 7: View from ST-2; facing south



Photograph 8: View from ST-2; facing west



Photograph 1: View from ST-3; facing north



Photograph 2: View from ST-3; facing east





Photograph 3: View from ST-3; facing south



Photograph 4: View from ST-3; facing west



Photograph 5: View from ST-4; facing north



Photograph 6: View from ST-4; facing east





Photograph 7: View from ST-4; facing south



Photograph 8: View from ST-4; facing west

THIS PAGE INTENTIONALLY LEFT BLANK