

**REZ PLN2013-0103
DOLLAR GENERAL
AREA MAP**

COUNTY

E KEYES RD

GEER RD

TURLOCK-MAIN

TID-LATERAL-NO 3

TID-LATERAL-NO 2-1/2

N SANTA FE AVE

SITE →

9

EXHIBIT B

69

TURLOCK

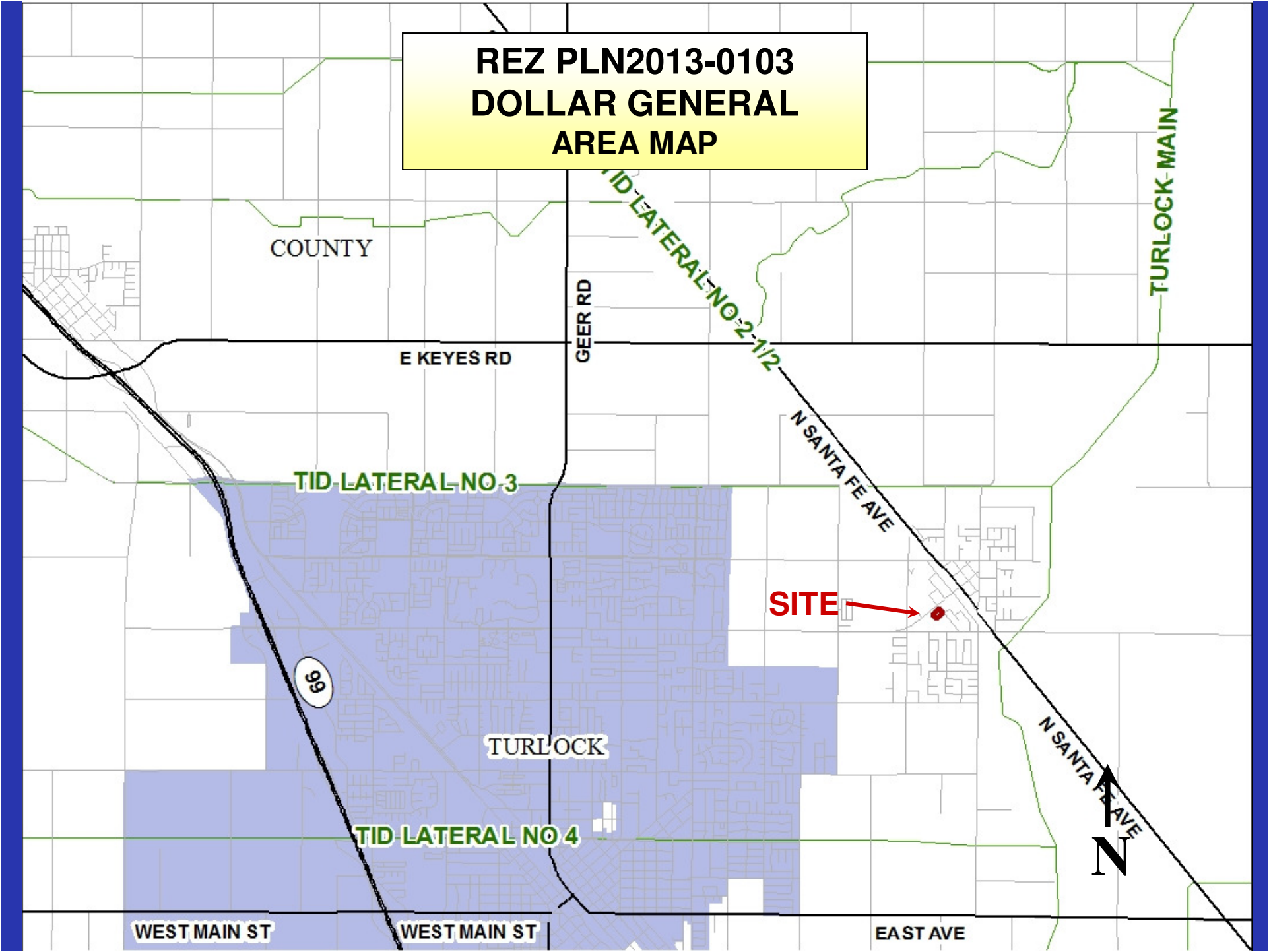
TID LATERAL NO 4

N SANTA FE AVE
N

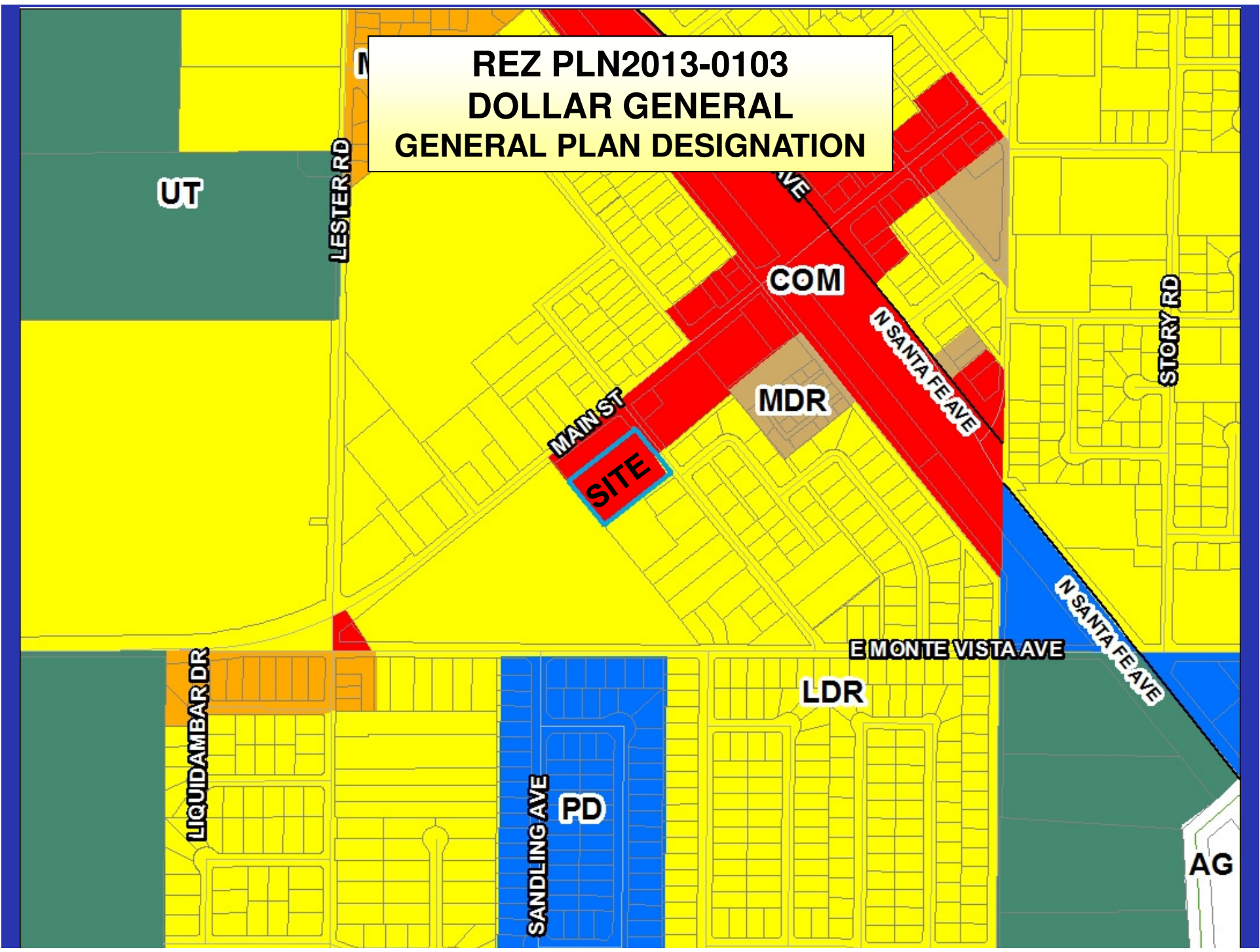
WEST MAIN ST

WEST MAIN ST

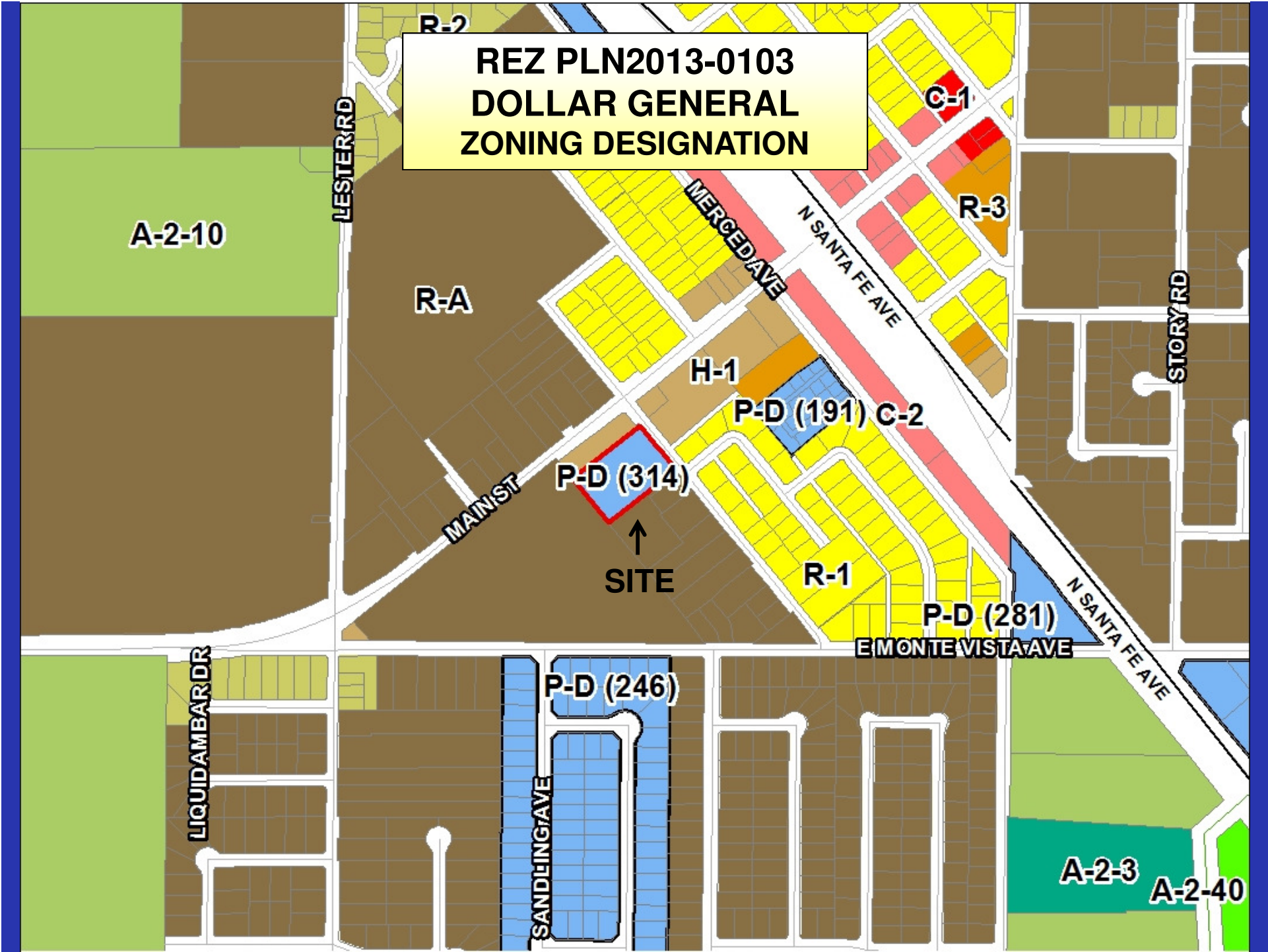
EAST AVE



**REZ PLN2013-0103
DOLLAR GENERAL
GENERAL PLAN DESIGNATION**



**REZ PLN2013-0103
DOLLAR GENERAL
ZONING DESIGNATION**

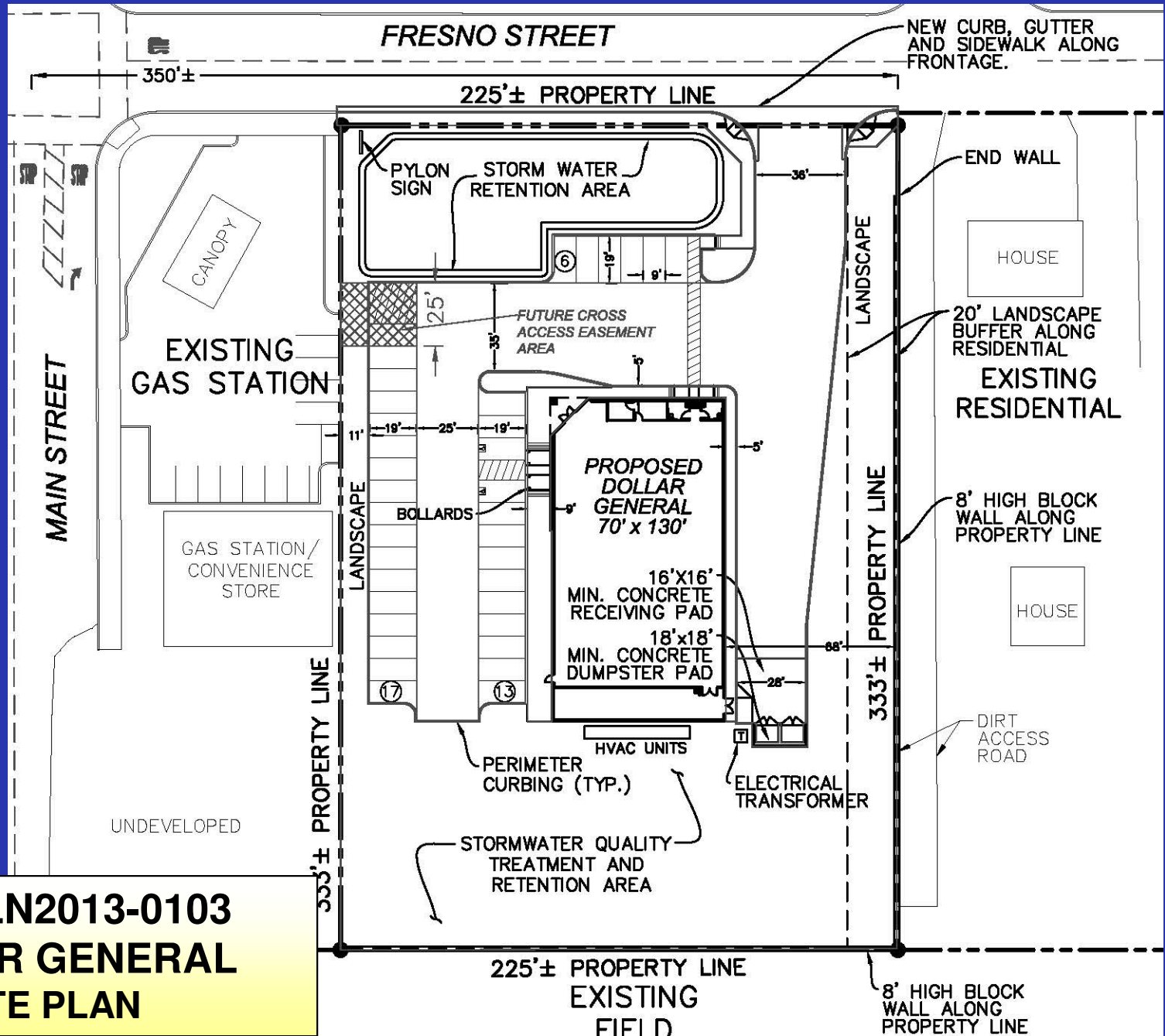


REZ PLN2013-0103
DOLLAR GENERAL
2013 STANISLAUS COUNTY AERIAL

MAIN ST

FRESNO AVE

SITE

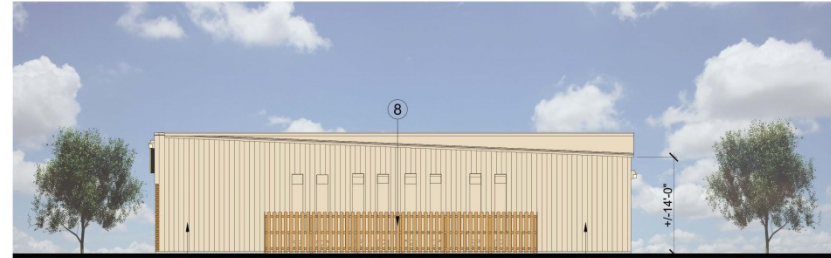


**REZ PLN2013-0103
DOLLAR GENERAL
SITE PLAN**

REZ PLN2013-0103 DOLLAR GENERAL REVISED ELEVATIONS



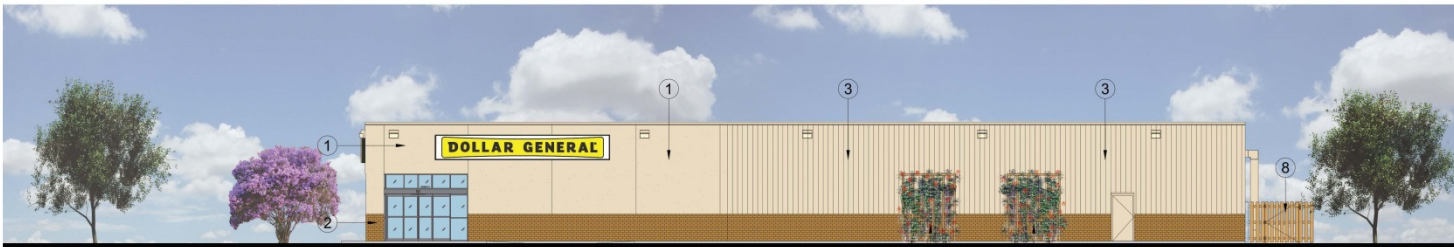
FRONT ELEVATION (NORTH)
SCALE: 1/8" = 1'-0"



REAR ELEVATION (SOUTH)
SCALE: 1/8" = 1'-0"



RIGHT ELEVATION (EAST)
SCALE: 1/8" = 1'-0"



LEFT ELEVATION (WEST)
SCALE: 1/8" = 1'-0"

- ① STUCCO (PAINTED)
- ② BRICK (OR CULTURED STONE)
- ③ "R" PANEL
- ④ GREEN SCREEN TRELLIS W/ VINES
- ⑤ METAL ROOF (TYP.)
- ⑥ DOWNSPOUTS (TYP.)
- ⑦ HVAC UNITS
- ⑧ STAINED WOOD SECURITY FENCE

16

EXHIBIT B-7

Dollar General Denair - Retail Store

Fresno Street, Denair, California 95316



4747 Williams Drive
Georgetown, TX 78633
tel 512.819.4700

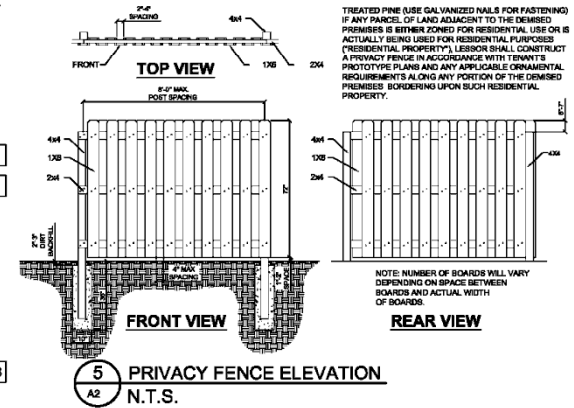
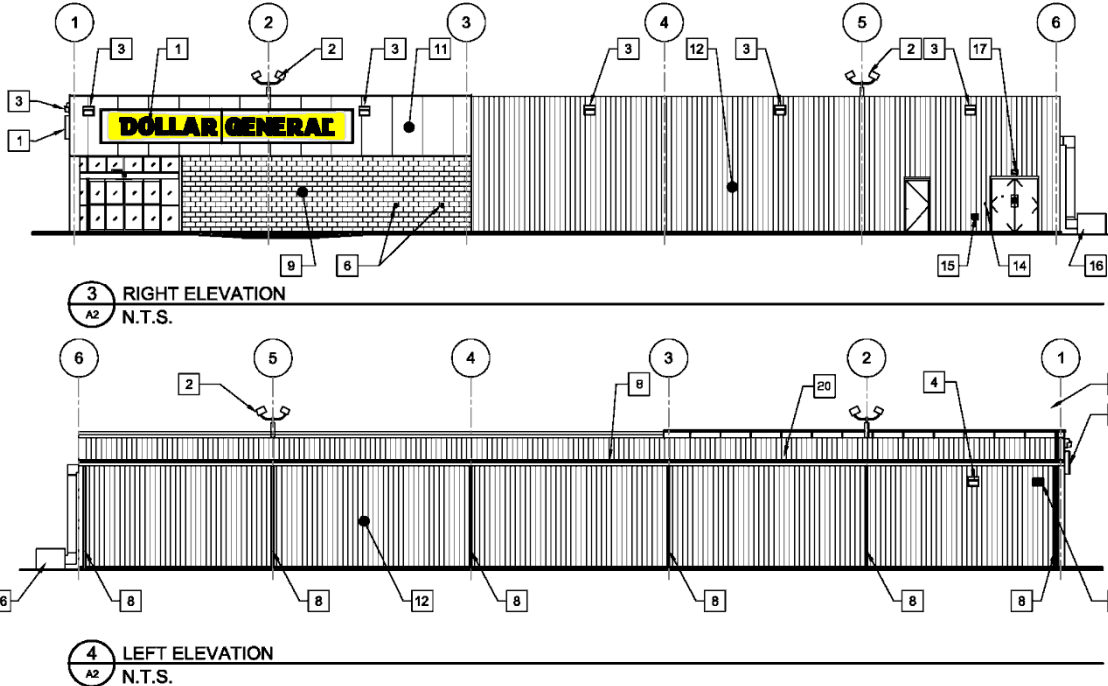
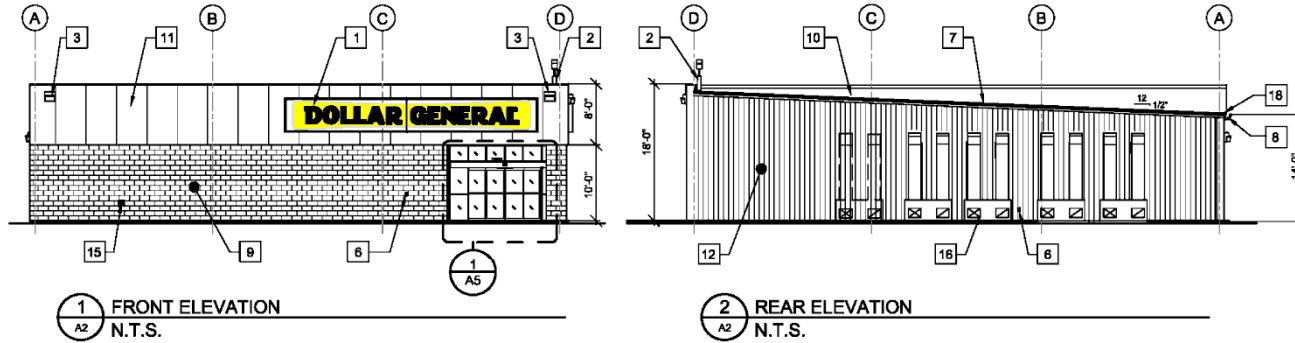


6595 Riverdale Street
San Diego, CA 92120
tel 619.727.4800

RENDERED EXTERIOR ELEVATIONS

MAY 30, 2014

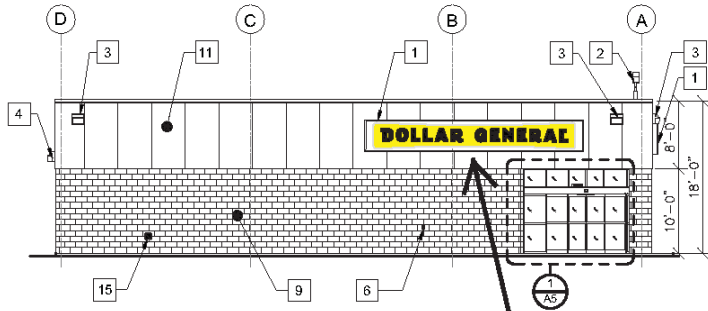
REZ PLN2013-0103 DOLLAR GENERAL ORIGINAL ELEVATIONS



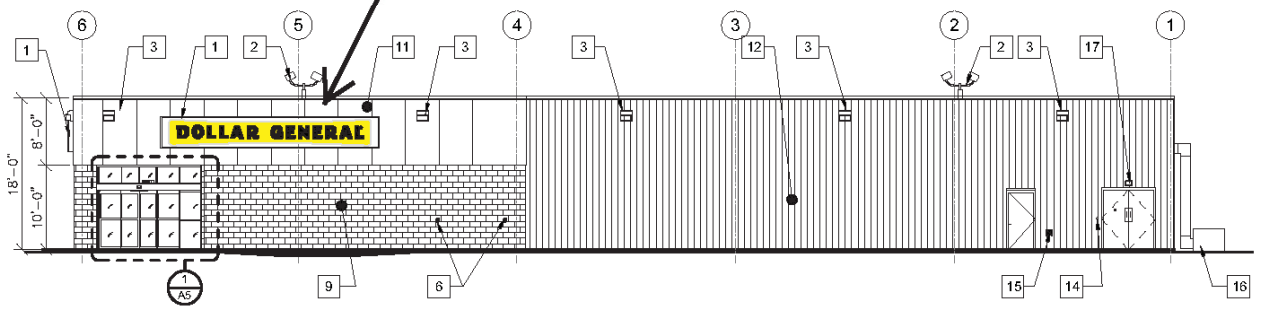
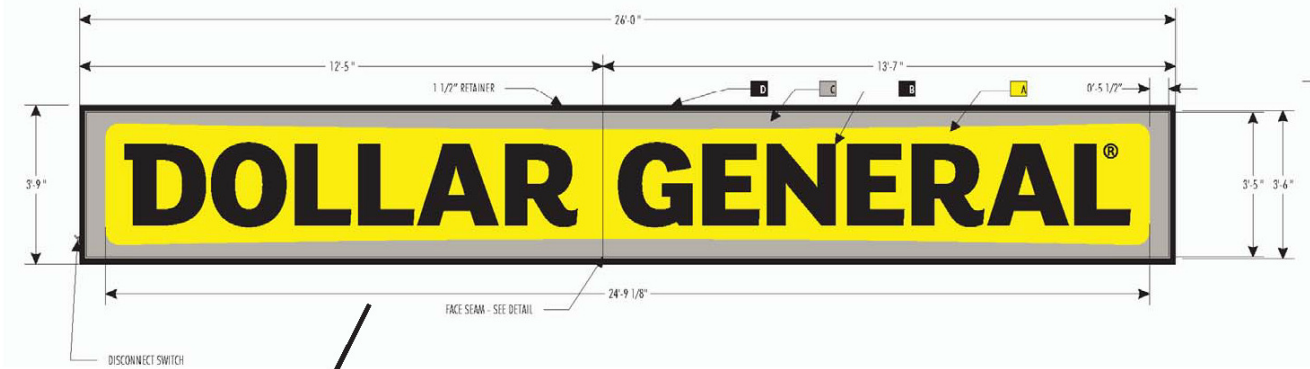
ELEVATION KEYED NOTES

- 1 SIGN FURNISHED AND INSTALLED BY DOLLAR GENERAL CORP. WITH CIRCUIT AS NOTED ON ELECTRICAL PLAN. SIGN TO BE CENTERED ON FRONT OF BUILDING. CONTRACTOR IS TO PROVIDE ADEQUATE BLOCKING AS REQUIRED BY SIGN MANUFACTURER TO SUPPORT SIGN WEIGHT OF UP TO 1,400 LBS. EXTERIOR CANOPY SIGN SHALL BE SUPPORTED BY THE FACE OF THE CANOPY. COORDINATE THE PROPER SIGNAGE TO BE USED WITH DOLLAR GENERAL.
- 2 BI-DIRECTIONAL SECURITY LIGHT. REFER TO ELECTRICAL DRAWINGS FOR ADDITIONAL INFORMATION.
- 3 WALL PACK, 18" A.F.F. TO TOP OF WALL PACK. REFER TO ELECTRICAL DRAWINGS FOR ADDITIONAL INFORMATION.
- 4 WALL PACK 12" A.F.F. TO TOP OF WALL PACK, (REQUIRED). REFER TO E2 FOR ADDITIONAL INFORMATION.
- 5 WALL PACK, (ALTERNATE PARKING LIGHT) REFER TO ELECTRICAL DRAWINGS FOR ADDITIONAL INFORMATION. REQUIRED ONLY IF THERE IS PARKING THIS SIDE OF BUILDING.
- 6 RECEPTACLE. REFER TO E1 FOR ADDITIONAL INFORMATION.
- 7 TRIM - SEE SHEET S1 FOR COLOR
- 8 GUTTER AND DOWNSPOUT - SEE SHEET S1 FOR COLOR
- 9 8" SPLIT FACE CONCRETE MASONRY UNIT. PAINT TO MATCH SIDE WALL PANELS.
- 10 METAL ROOF. GALVALUME FINISH.
- 11 METAL FASCIA PANELS, SEE SHEET S1 FOR COLOR.
- 12 METAL PANEL. SEE SHEET S1 FOR COLOR.
- 13 VENT FOR BATHROOM EXHAUST. REFER TO M1 FOR ADDITIONAL INFORMATION.
- 14 DOOR BUZZER. REFER TO E1 FOR ADDITIONAL INFORMATION.
- 15 WALL HYDRANT. REFER TO P1 FOR ADDITIONAL INFORMATION.
- 16 HVAC UNITS MOUNTED ON CONCRETE PAD / OPTIONAL RACK MOUNT AT COST NEUTRAL. REFER TO MECHANICAL SHEET M1 FOR MORE INFORMATION.
- 17 OUTSIDE AIR TEMP. SENSOR MOUNTED OVER RECEIVING DOORS @ 8'-0" A.F.F.
- 18 MINIMUM EAVE HEIGHT IS 14'-0" A.F.F.
- 19 FINISHED GRADE AT EXTERIOR WALLS SHALL BE A MINIMUM OF 6" BELOW FINISHED FLOOR AT ALL NON PAVED AREAS.
- 20 IN NORTHERN CLIMATES, PROVIDE SNOW GUARDS ON ROOF PER LOCAL CODE.

**REZ PLN2013-0103
DOLLAR GENERAL
SIGN PLAN
(On Original Elevations)**

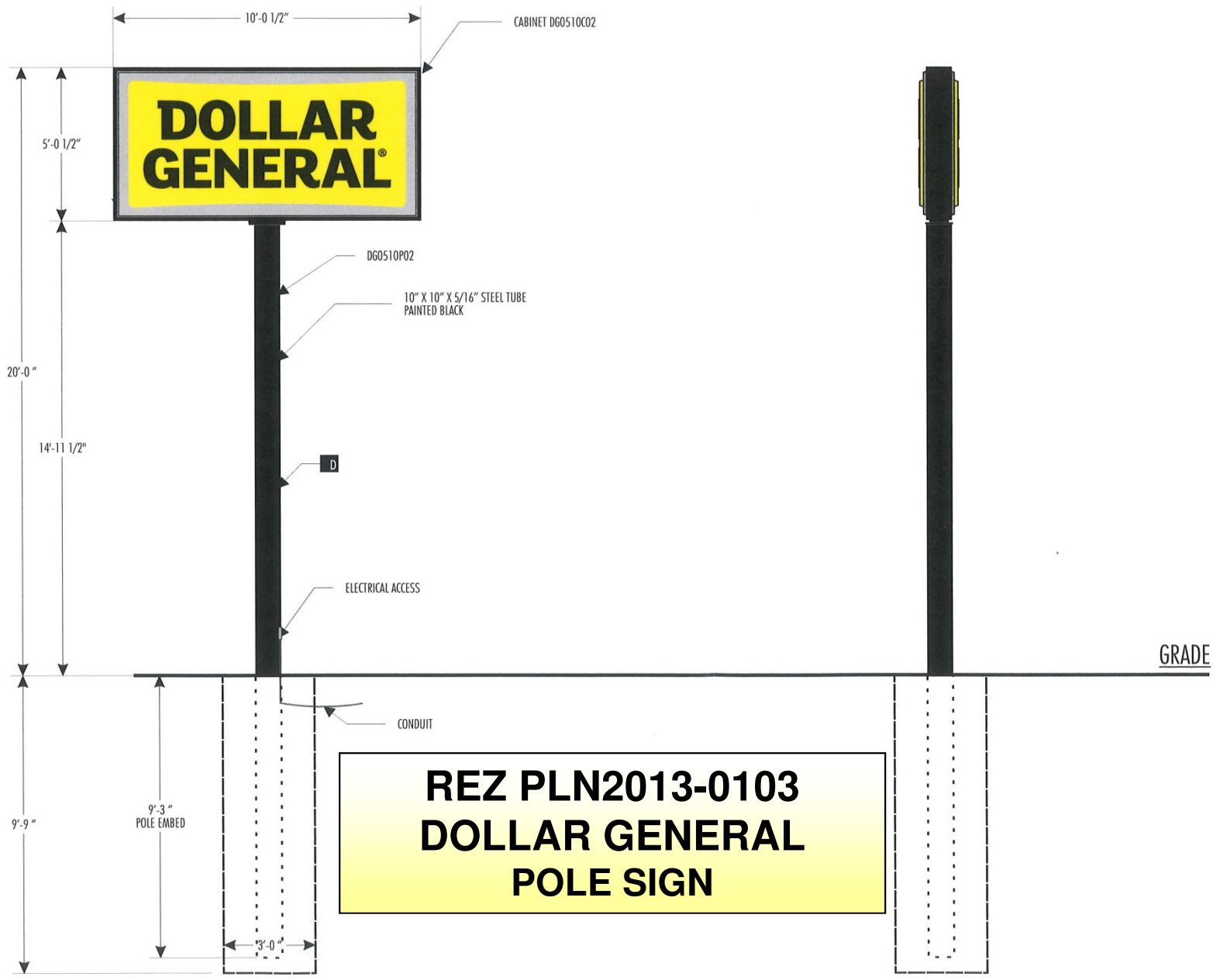


1 FRONT ELEVATION
A2 SCALE: NTS



4 LEFT ELEVATION
A2 SCALE: NTS

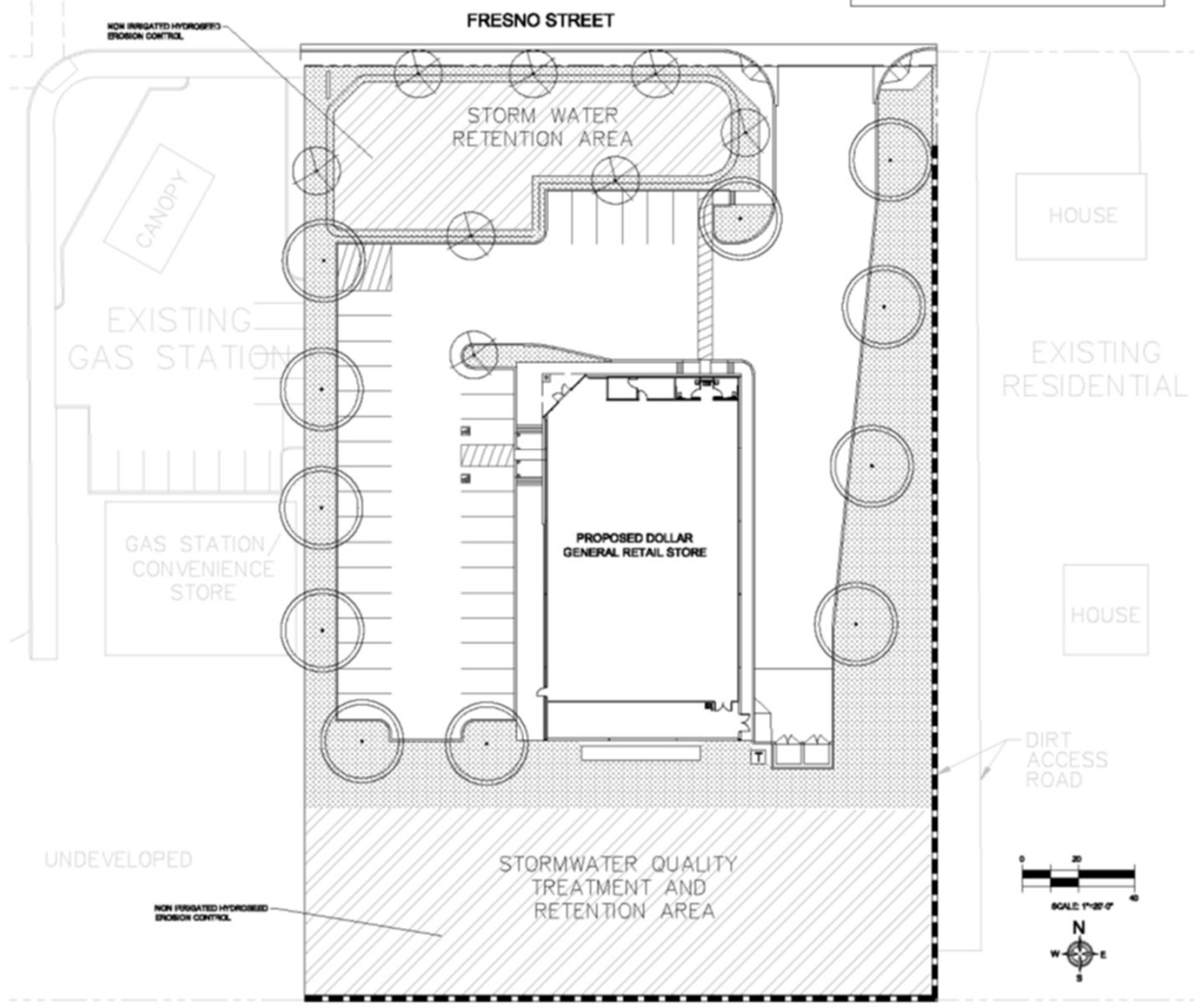
PROPOSED SIGN PLAN



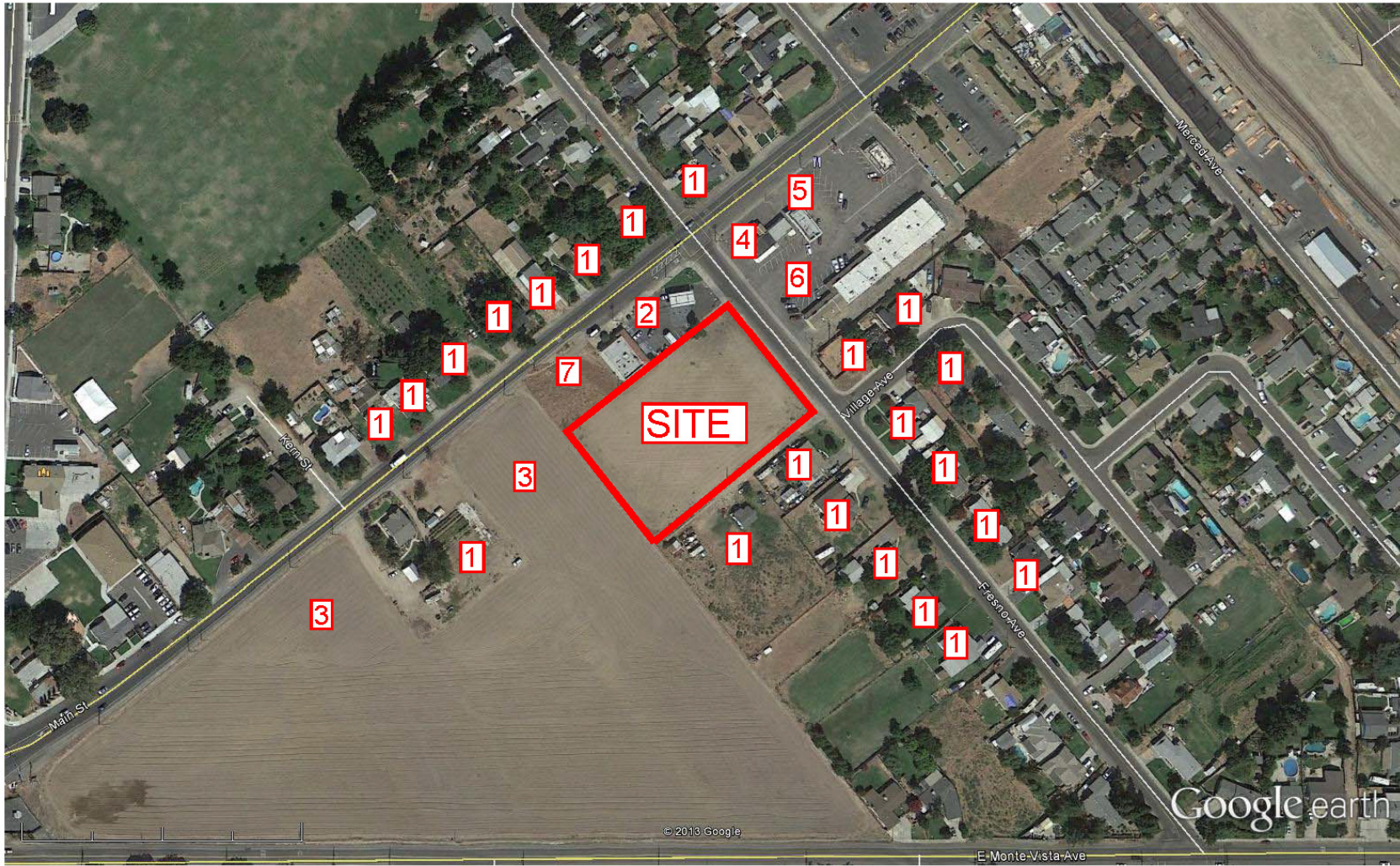
REZ PLN2013-0103 DOLLAR GENERAL LANDSCAPE PLAN

COUNTY REQUIREMENTS FOR LANDSCAPE DEVELOPMENT

- ADHERENCE TO STANISLAUS COUNTY WATER EFFICIENT LANDSCAPING STANDARDS
- JOHNSON DEPARTMENT 21.156 (SIC) COMMERCIAL LANDSCAPING
- MINIMUM 10 PERCENT OF THE TOTAL AREA SHALL BE LANDSCAPED.



AREA MAP



- LEGEND**
- 1-Residence
 - 2-Gas Station
 - 3-Farmland
 - 4-Auto Service
 - 5-Food Service
 - 6-Retail
 - 7-Vacant Lot



**REZ PLN2013-0103
DOLLAR GENERAL
LAND USE MAP**