

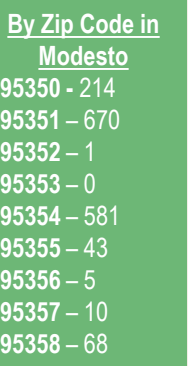
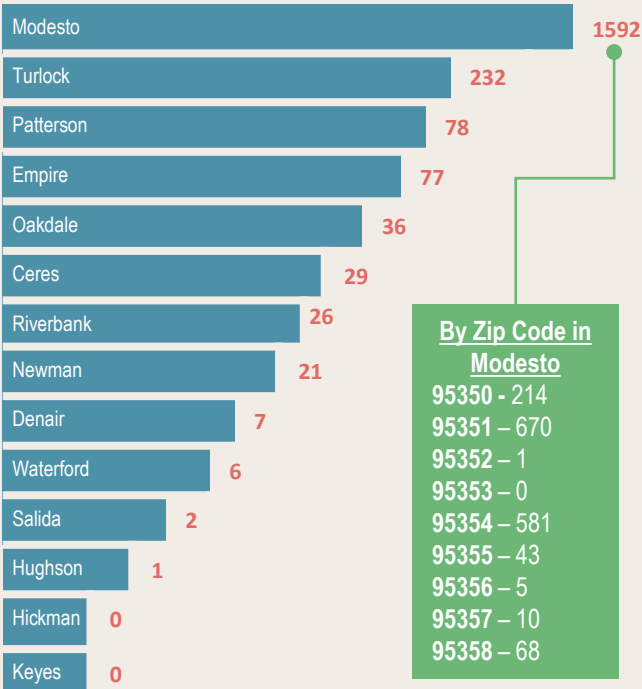
# 2020 Stanislaus County Homeless Point-in-Time Count | Executive Summary



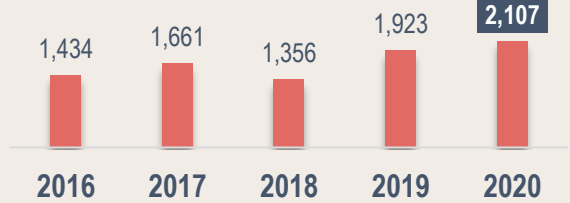
Every two years, during the last 10 days of January, the U.S. Department of Housing & Community Development asks communities across the country to conduct a comprehensive count of people experiencing homelessness in order to measure the prevalence of homelessness in each local community. The Stanislaus community conducts this survey every year.

The 2020 Stanislaus County Point-in-Time (PIT) Count was a community-wide effort conducted on January 23, 2020. Questionnaires were administered to unsheltered and sheltered individuals experiencing homelessness to profile their experience and characteristics. A total of 2,107 people, including 207 children, experienced homelessness in Stanislaus County.

## Sheltered/Unsheltered Population by City



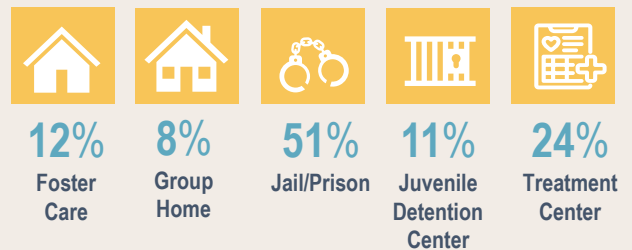
## PIT Count Longitudinal Trend



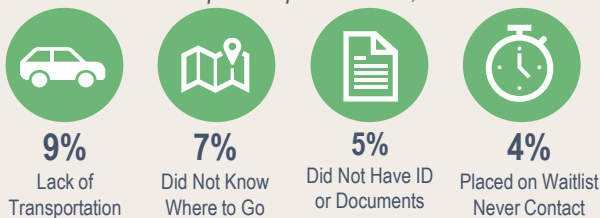
## Sheltered/Unsheltered Population



## Have Ever Been In Top 5 Responses n=1,383



## Obstacles Accessing Services Top 4 Responses n=1,383



## Reasons for Becoming Homeless Top 6 Responses n=1,383



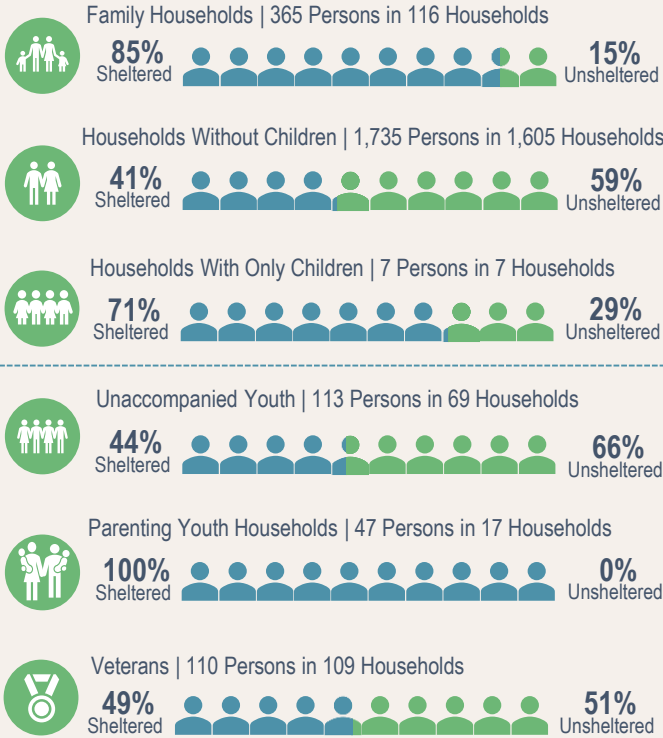
## First Became Homeless



**80%**  
Stanislaus County

1,383 = Clients that responded to all survey questions, creating a margin of error of 1.545%  
 1890 = Clients Unsheltered and in Emergency Shelter, does not include those in Transitional Housing.

### Household Breakdown



### Chronically Homeless Population

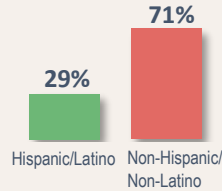
n=1,890



336 Sheltered/Unsheltered

### Ethnicity

HUD guidelines



### Location n=1,383

#### 617 Unsheltered

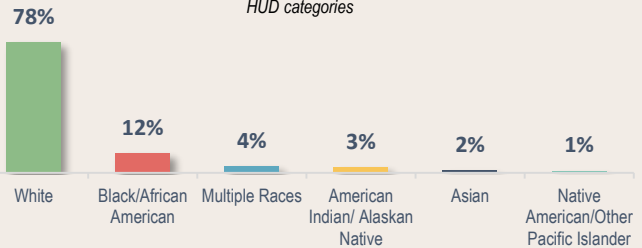
Street or Sidewalk	26%
Vehicle	6%
Woods or Encampment	6%
Park	3%
Under Bridge/Overpass	3%
Abandoned Building	<1%
Bus, Train Station, Airport	<1%

#### 766 Sheltered

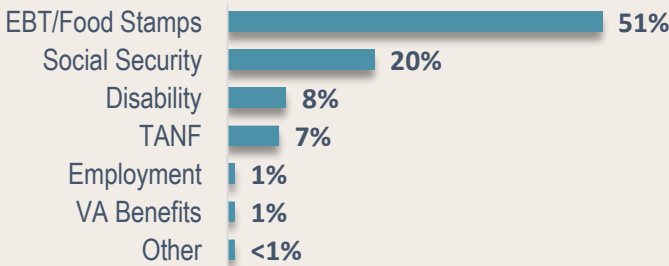
Emergency Shelter	42%
Transitional Housing	11%
Hotel/Motel (Paid by Non-Profit)	3%

### Race

HUD categories



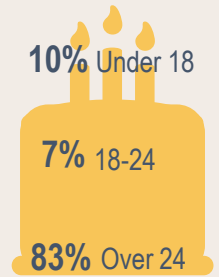
### Income and Benefits



### Gender

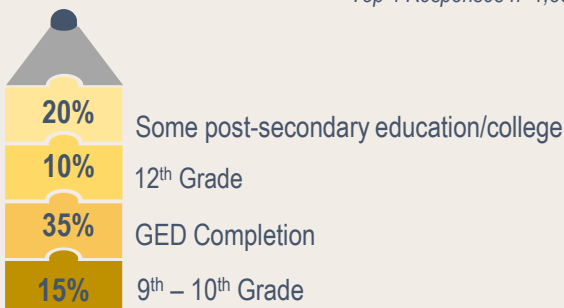
65% Male  
 35% Female  
 <1% Transgender  
 <1% Non-Conforming

### Age



### Highest Grade or Level of School Completed

Top 4 Responses n=1,383



### Other Homeless Populations

Top 3 Responses n = 1,383

