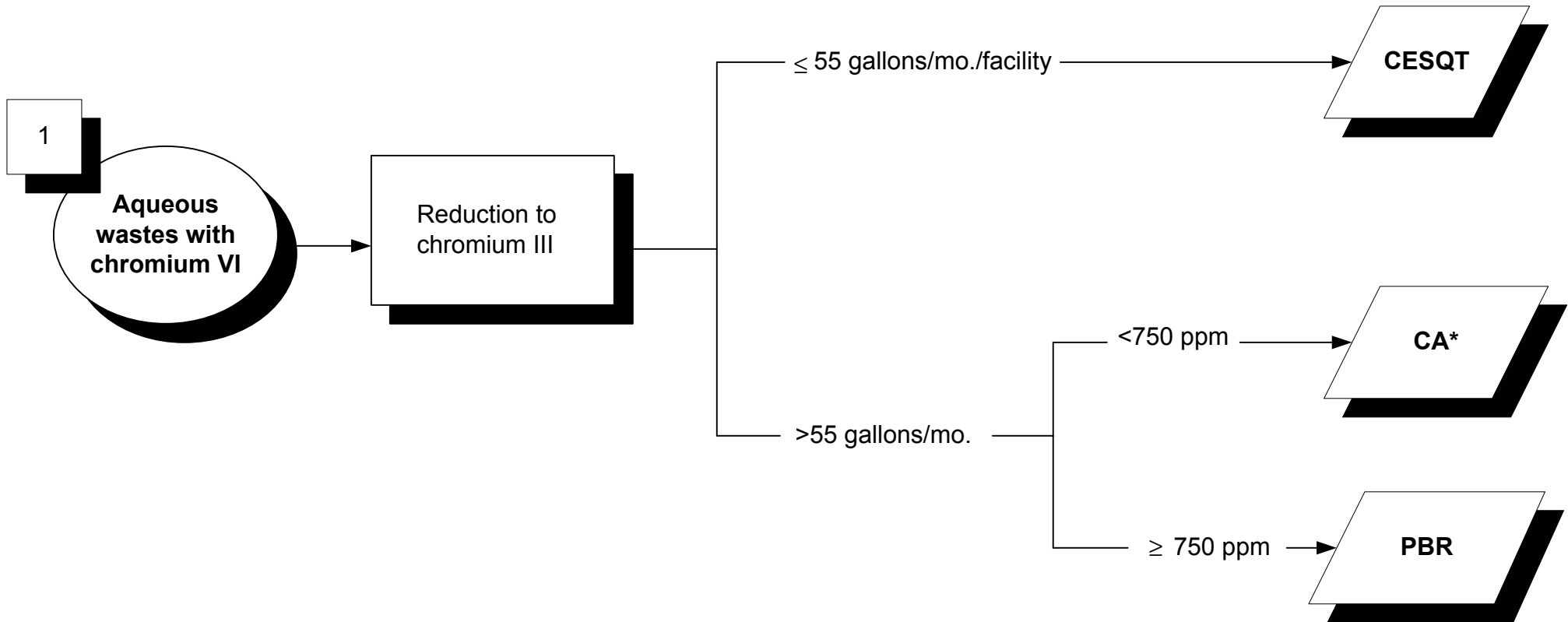


Onsite Tiered Permitting - Flowchart

(For non-RCRA or exempt hazardous waste facilities conducting onsite treatment.)



CESQT - Conditionally Exempt Small Quantity Treatment (Health and Safety Code (HSC § 25201.5(a)))

CESW - Conditionally Exempt Specified Wastestream (HSC § 25201.5(c))

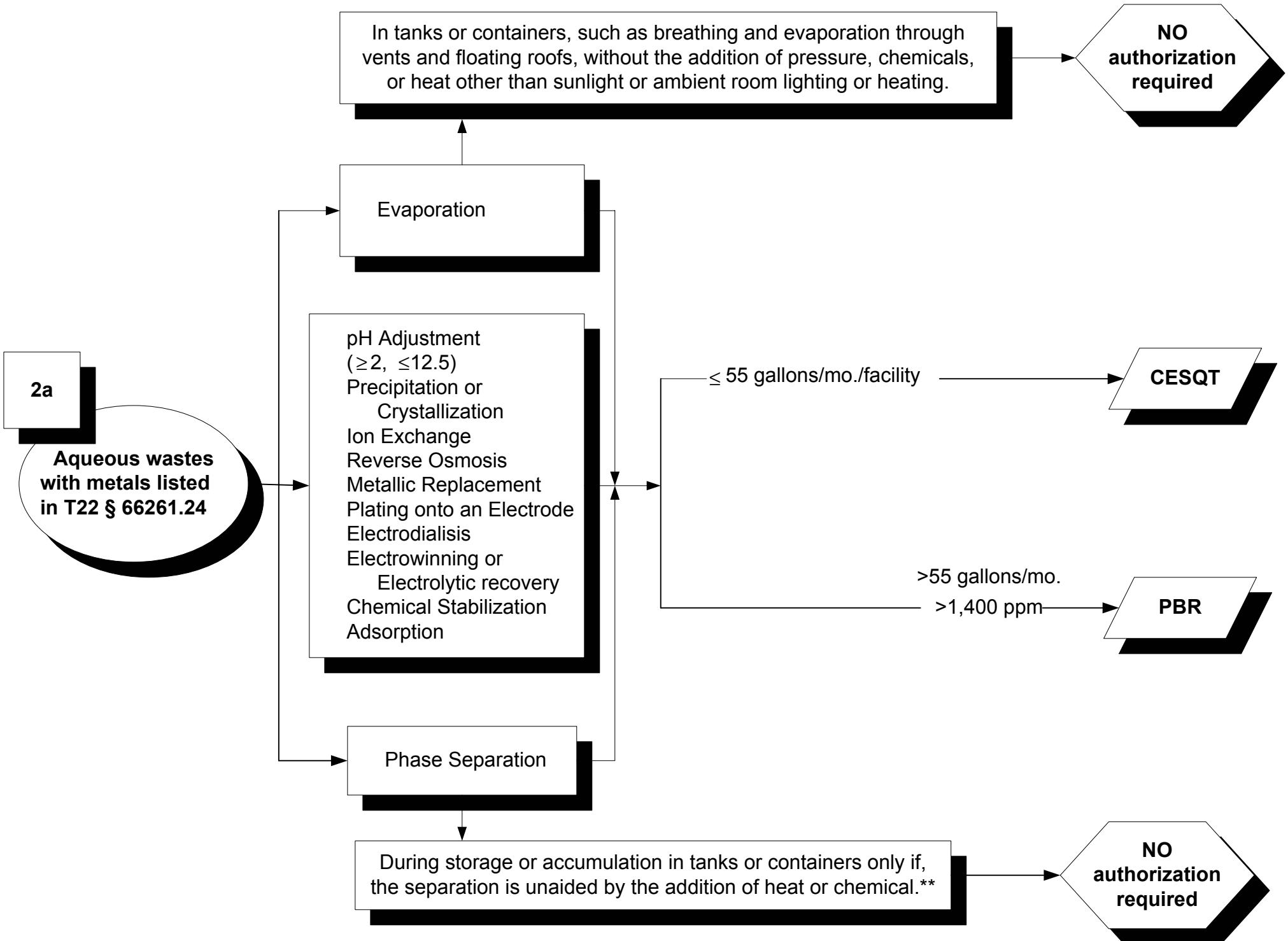
CEL - Conditionally Exempt-Limited (HSC § 25201.14)

CECL - Conditionally Exempt Commercial Laundries (HSC § 25144.6(c))

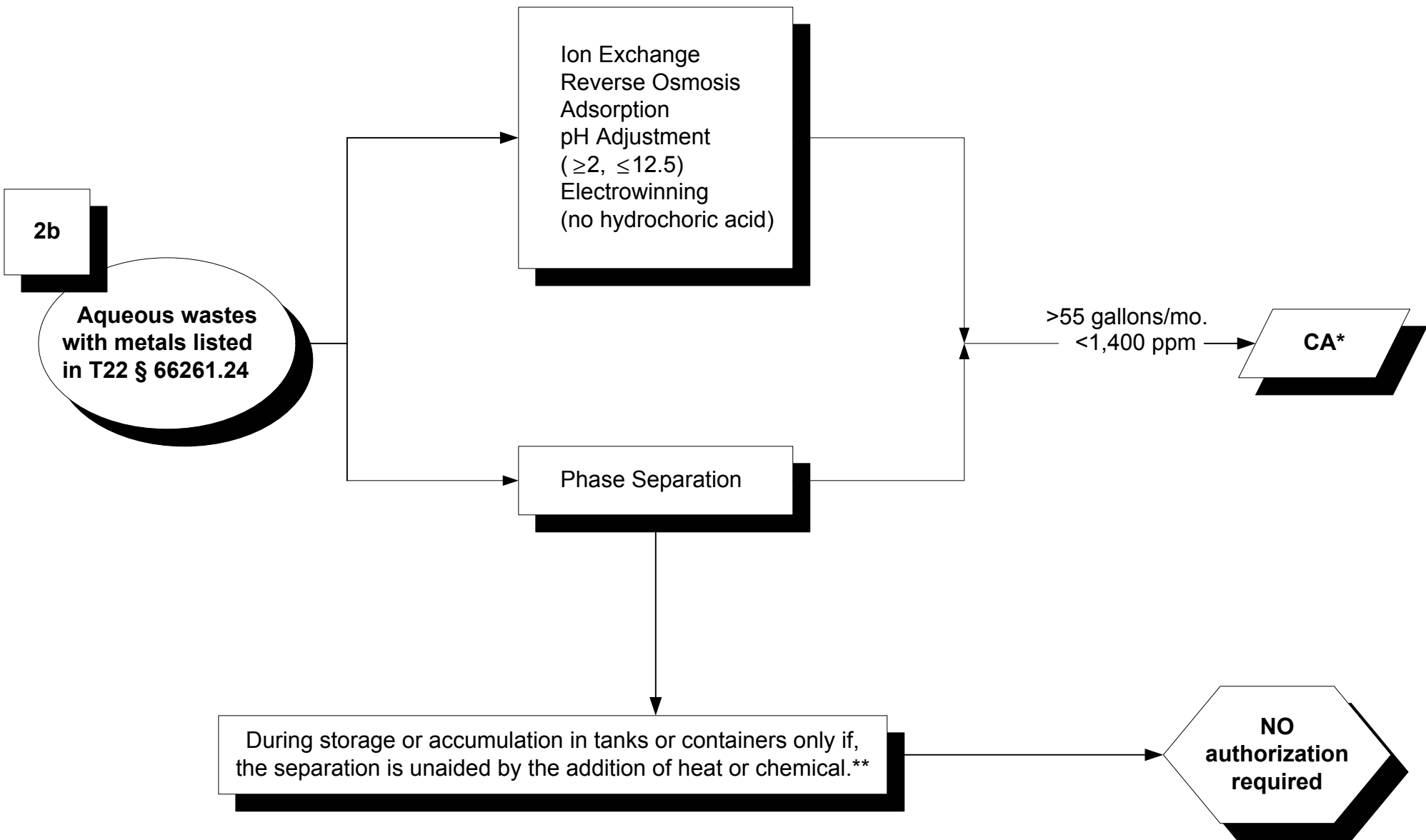
CA - Conditional Authorization (HSC § 25200.3)

PBR - Permit by Rule (Title 22, CCR, Div. 4.5, Chapter 45)

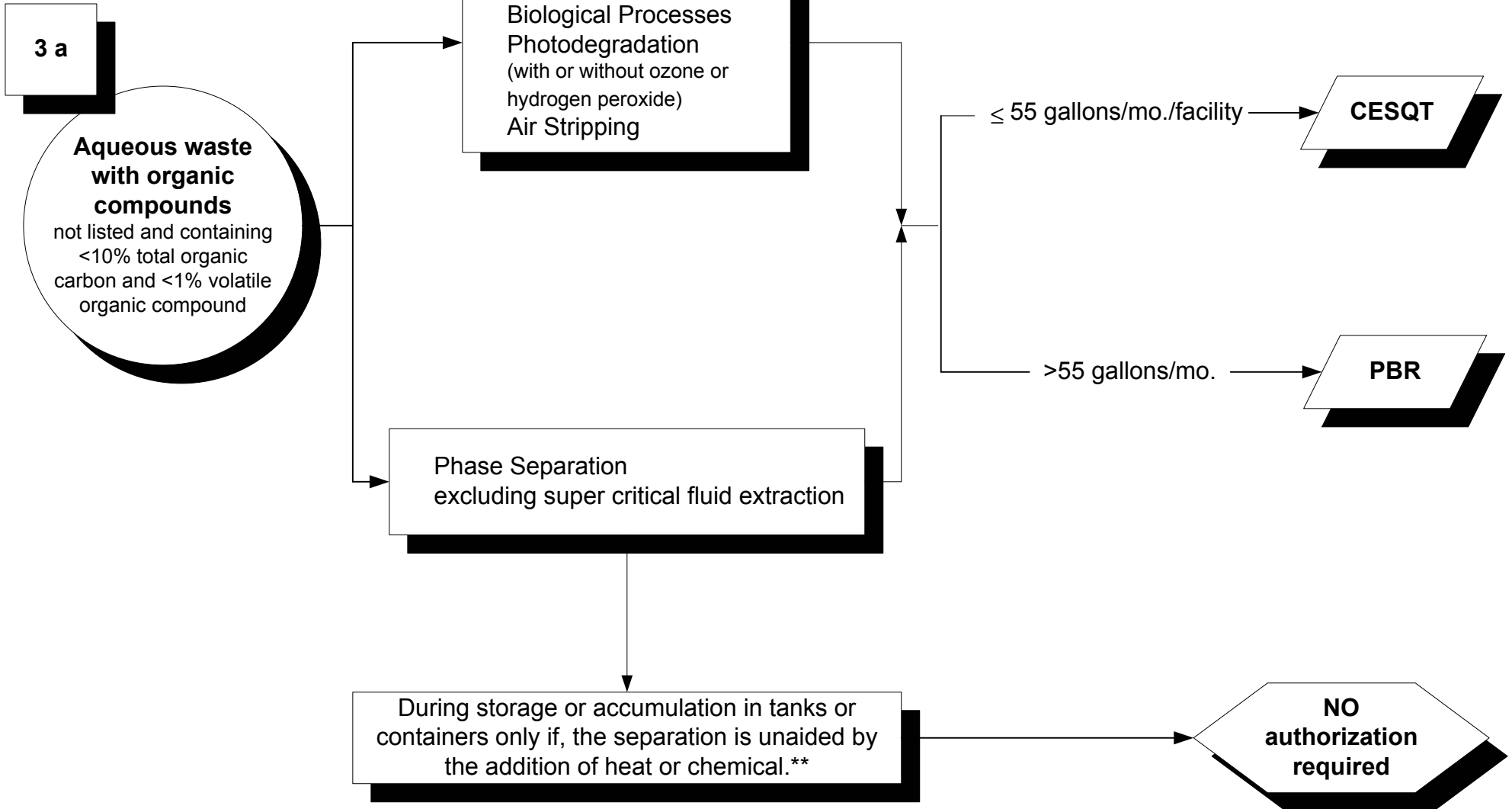
*Must be hazardous solely due to this characteristic



**Closed except adding/removing (T22, § 66265.173)

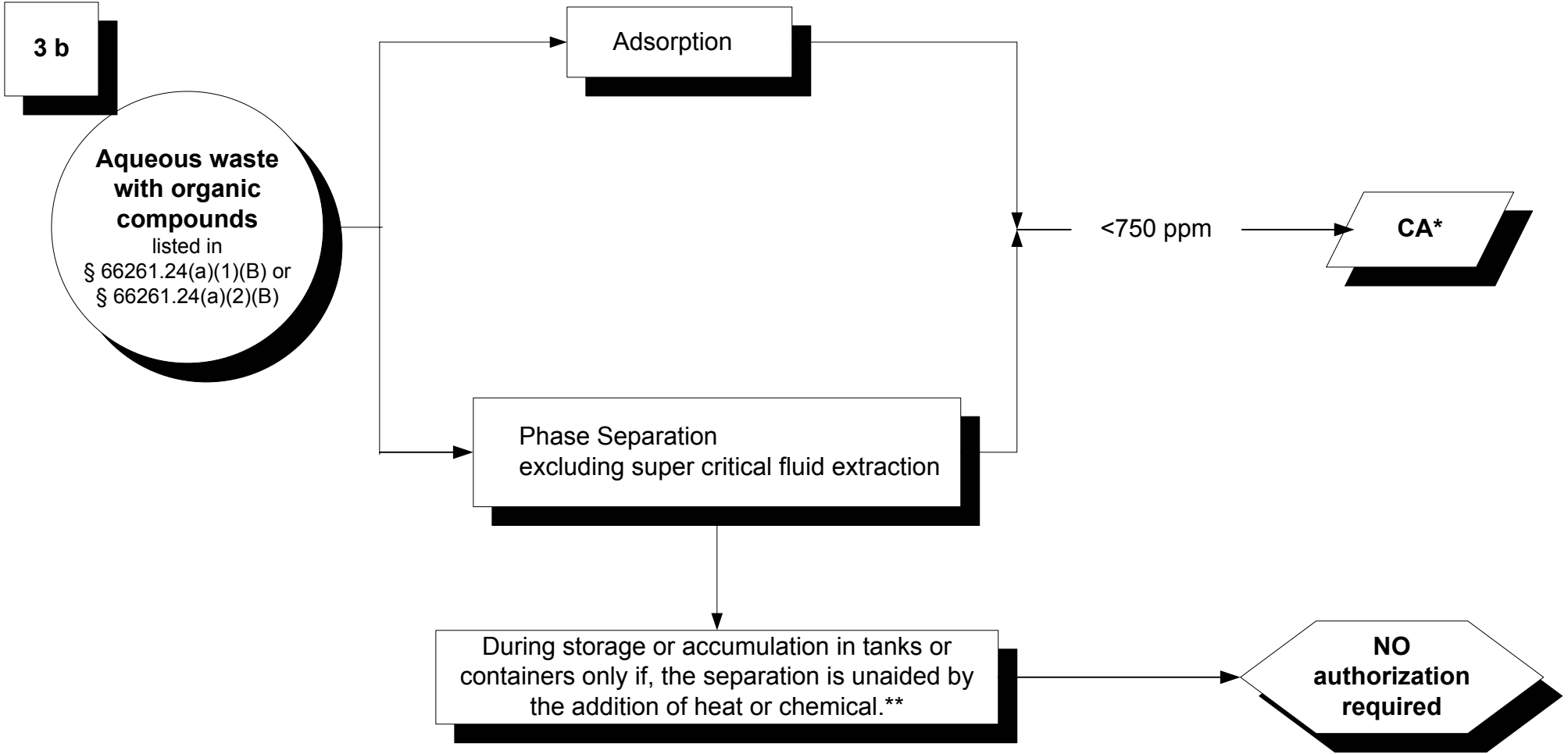


*Must be hazardous solely due to this characteristic
 **Closed except adding/removing (T22, § 66265.173)

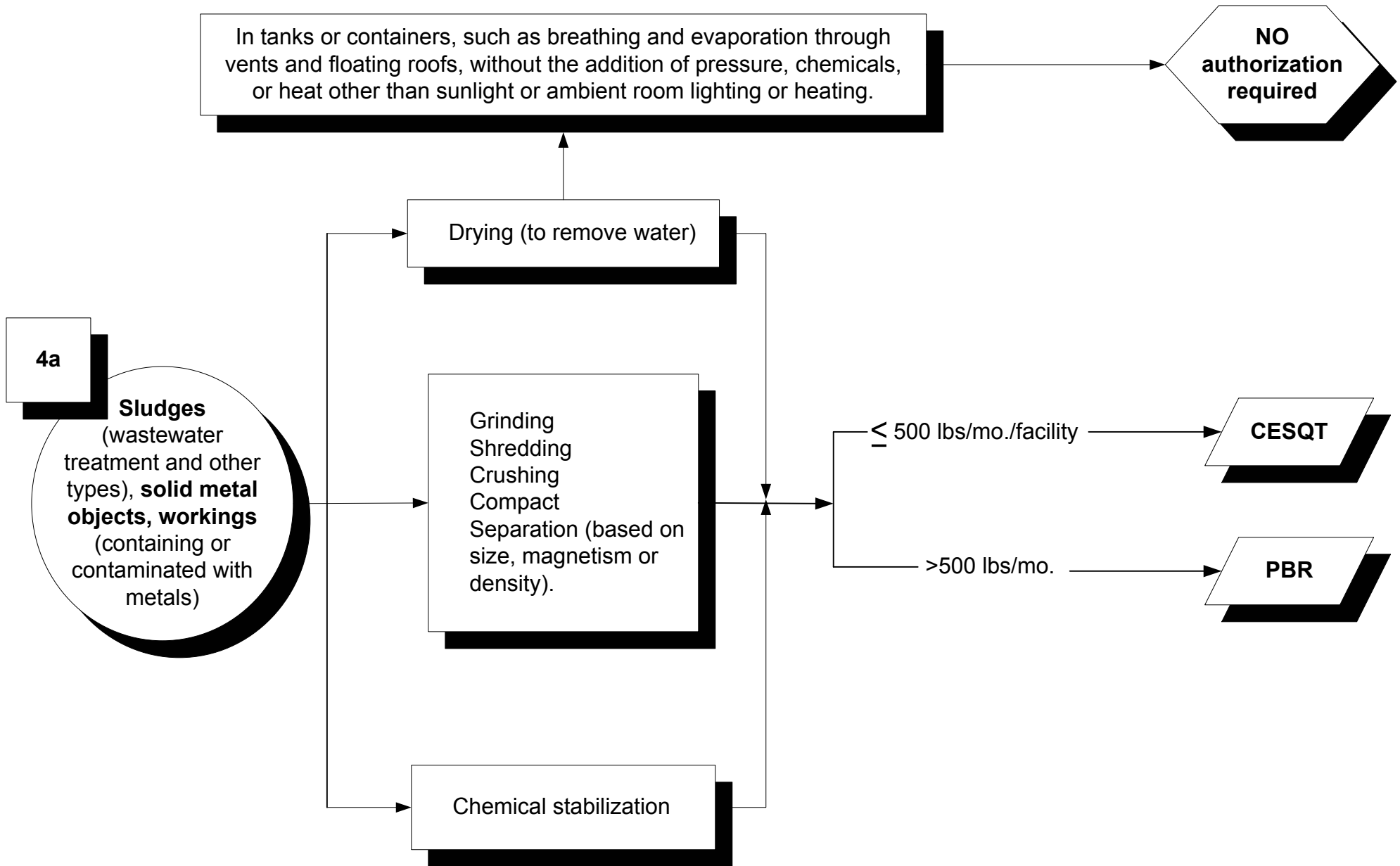


*Must be hazardous solely due to this characteristic

**Closed except adding/removing (T22, § 66265.173)



*Must be hazardous solely due to this characteristic
 **Closed except adding/removing (T22, § 66265.173)



In tanks or containers, such as breathing and evaporation through vents and floating roofs, without the addition of pressure, chemicals, or heat other than sunlight or ambient room lighting or heating.

**NO
authorization
required**

4b

**Wastewater
treatment sludges,
solid metal objects,
metal workings containing
or contaminated with metals
and
Dusts containing ≤ 750 ppm
metal**

Drying (to remove water)

Centrifuge
Gravity Settling
Grinding
Shredding
Crushing
Compact
Separation (based on
size, magnetism or
density).

Filtration

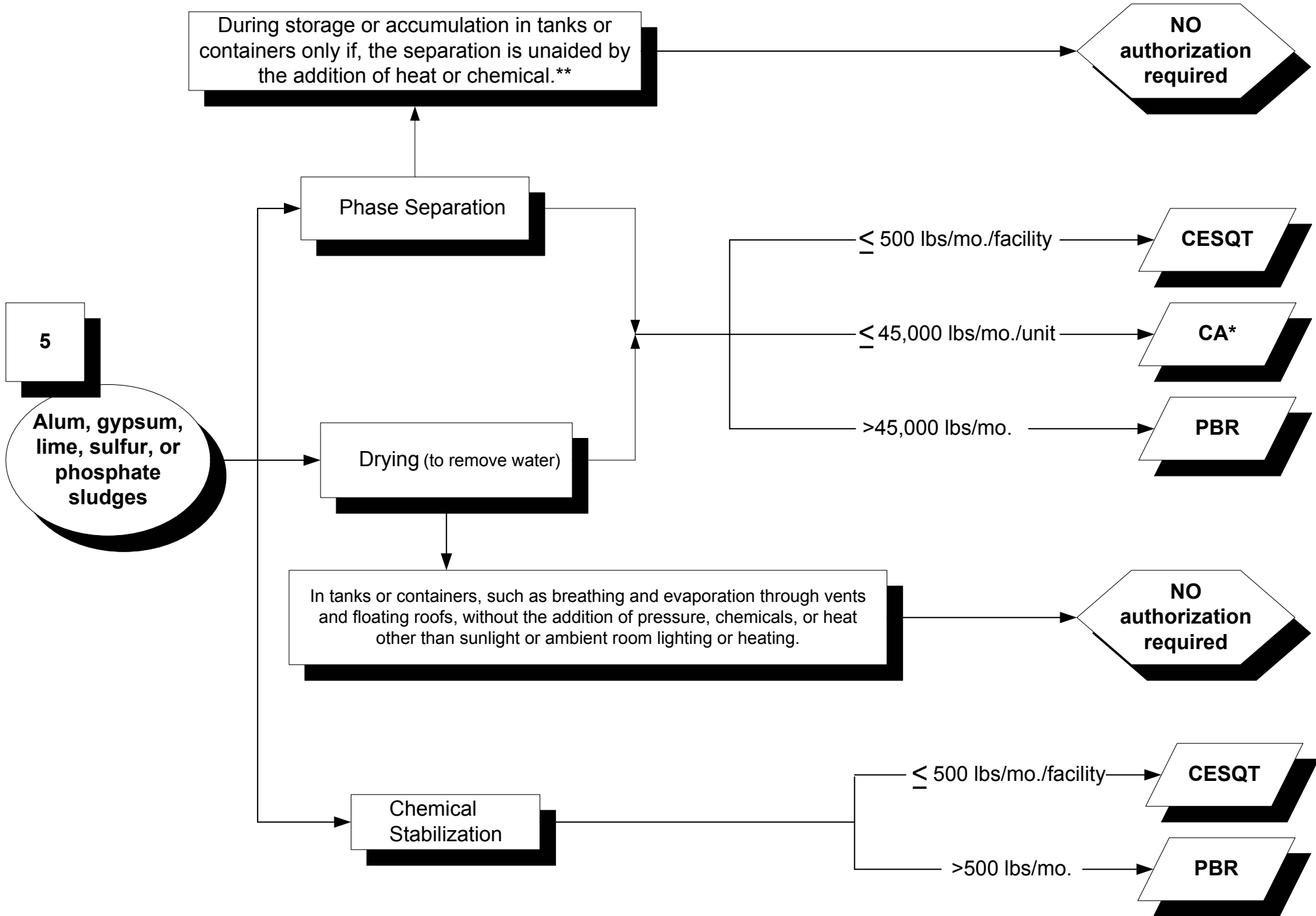
$\leq 45,000$ lbs/mo.

CA*

Sieving or filtering liquid hazardous waste to remove solid fractions, without added heat, chemicals, or pressure, as the waste is added to or removed from a storage or accumulation tank or container. For this activity, sieving or filtering does not include adsorptions, reverse osmosis, or ultrafiltration.

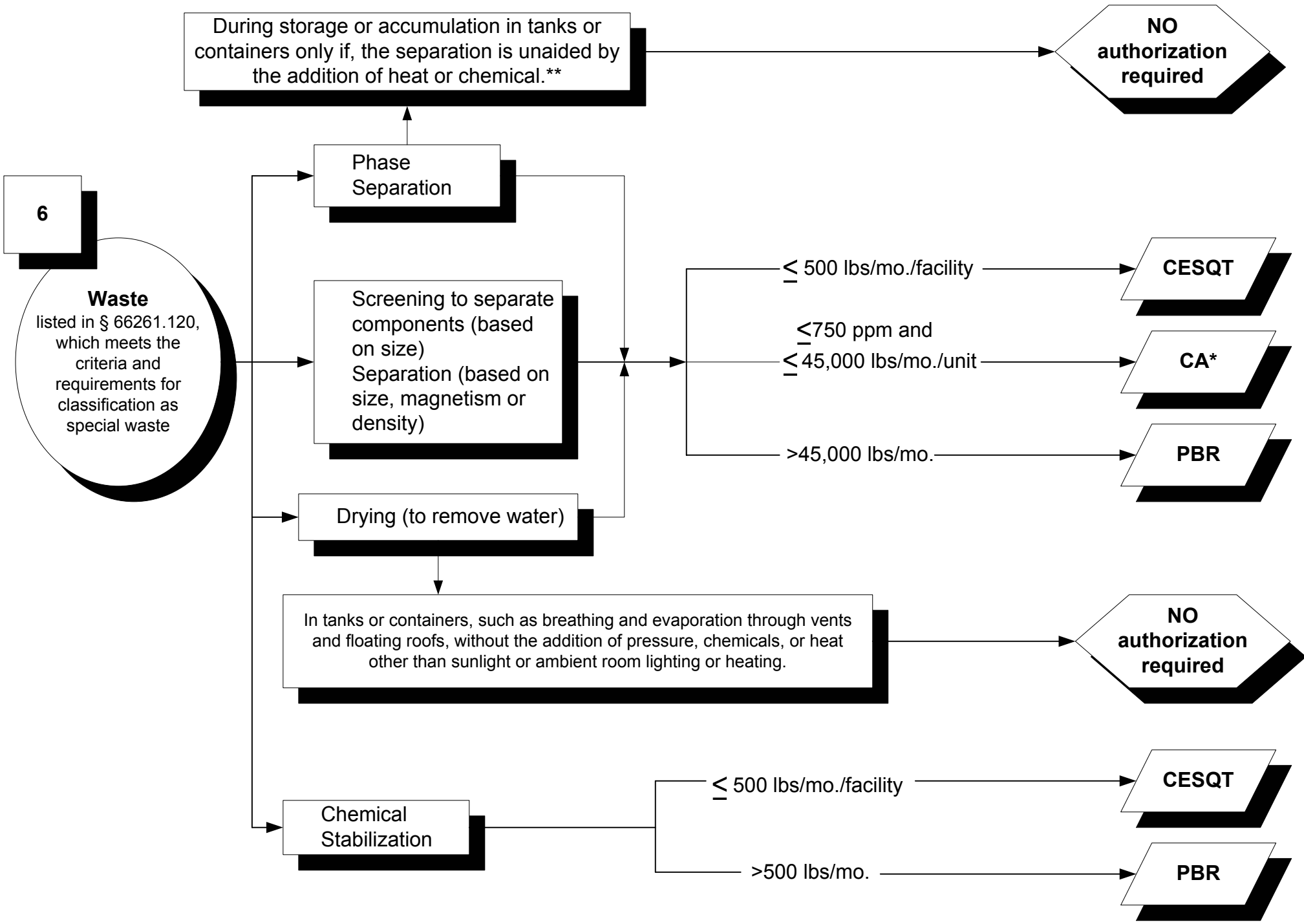
**NO
authorization
required**

*Must be hazardous solely due to this characteristic

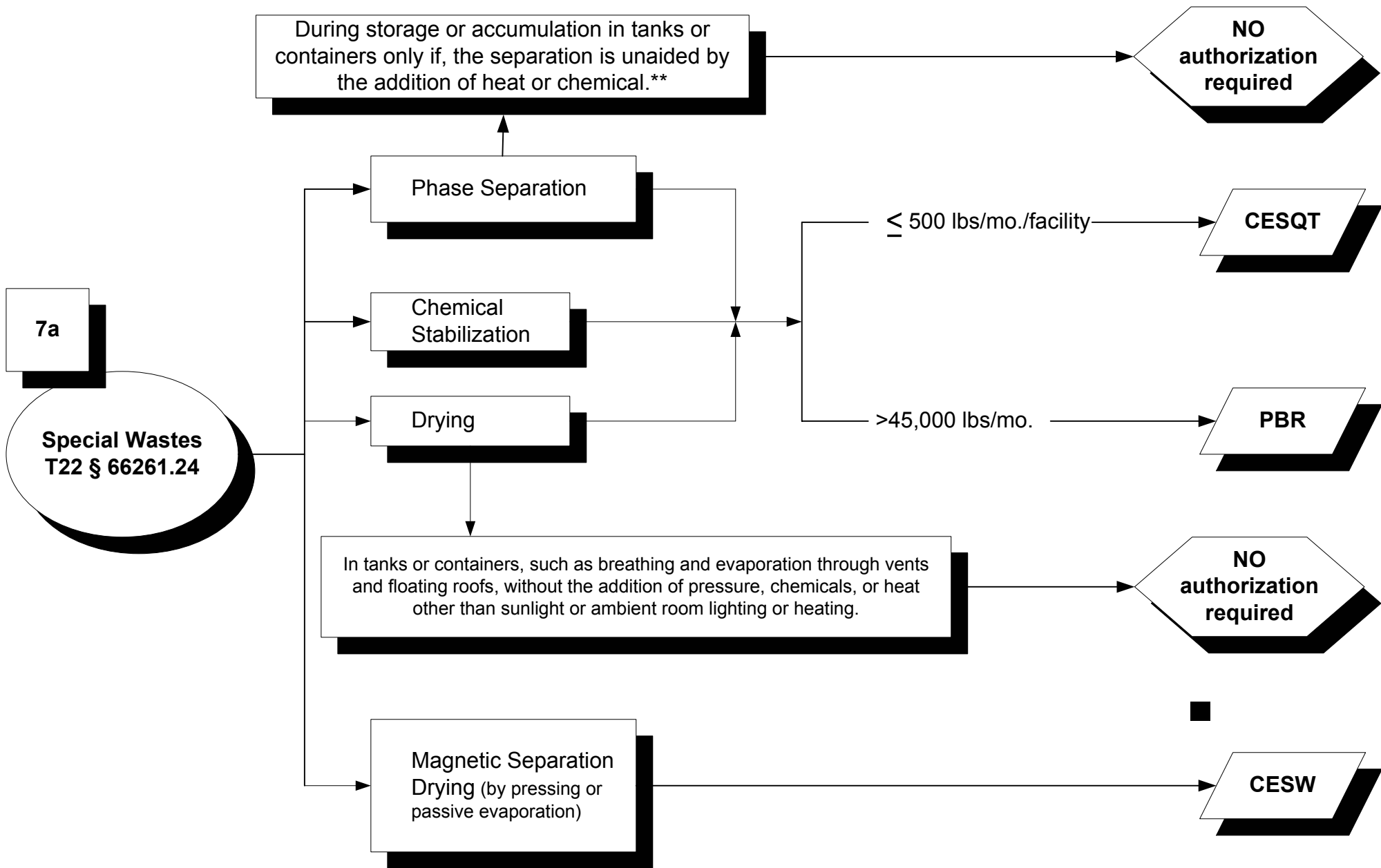


*Must be hazardous solely due to this characteristic

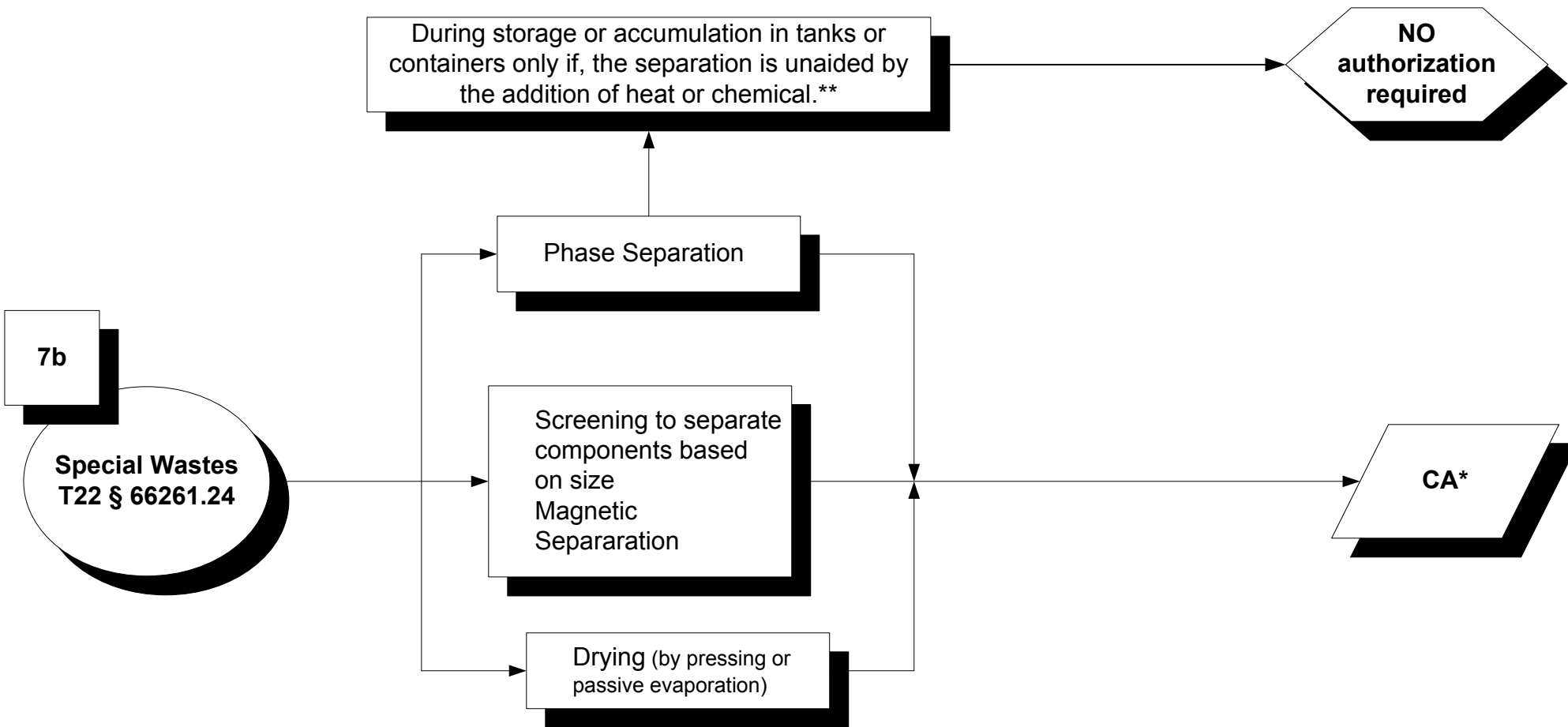
**Closed except adding/removing (T22, § 66265.173)



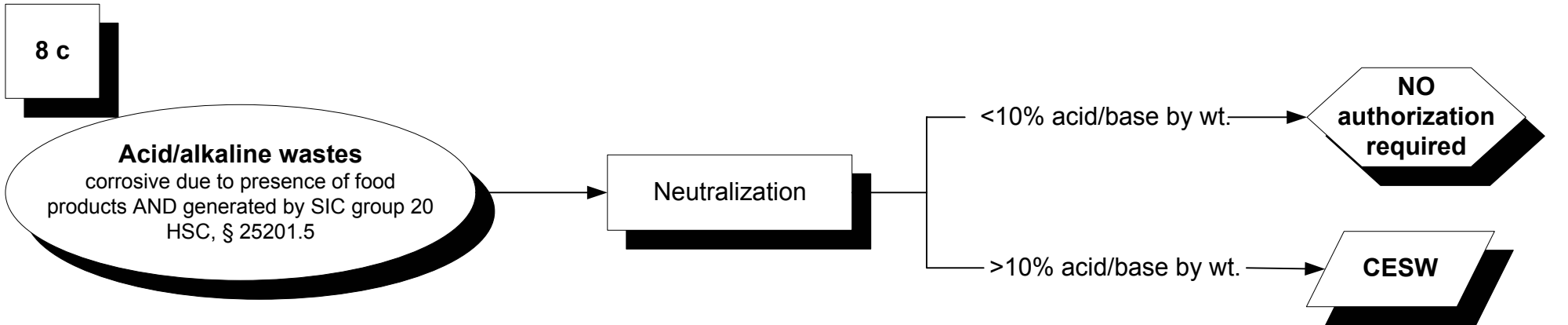
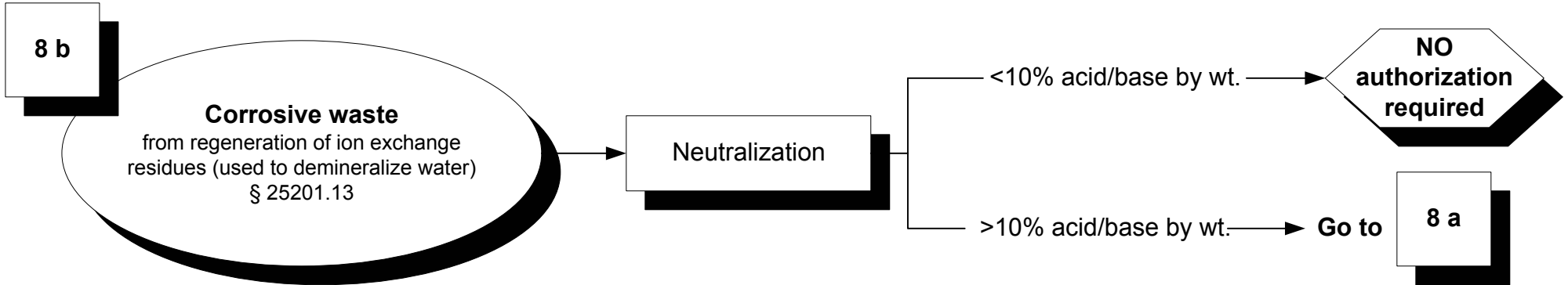
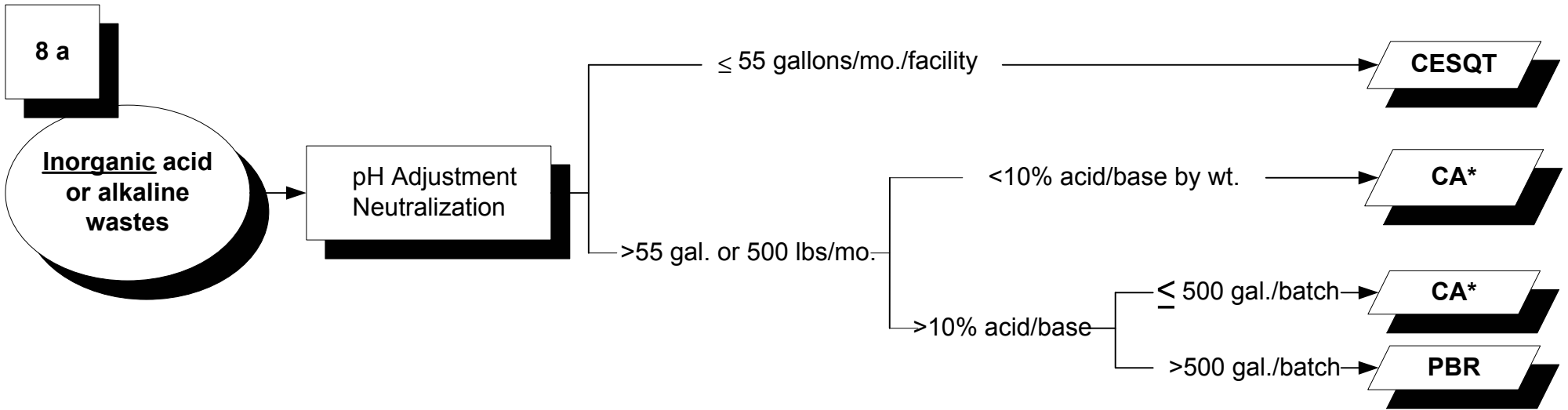
*Must be hazardous solely due to this characteristic
 **Closed except adding/removing (T22, § 66265.173)



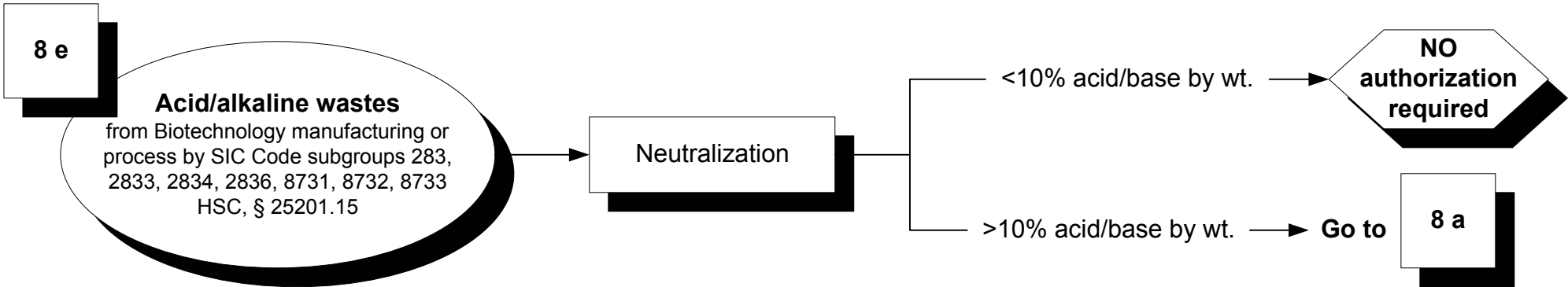
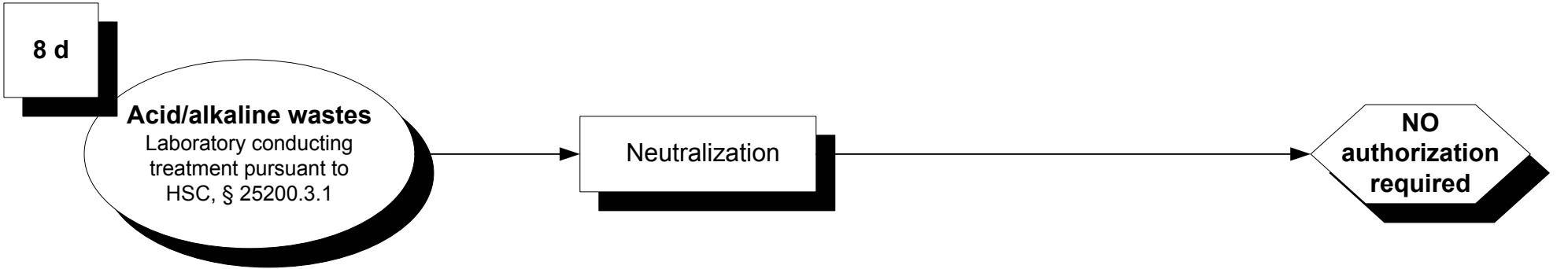
**Closed except adding/removing (T22, § 66265.173)

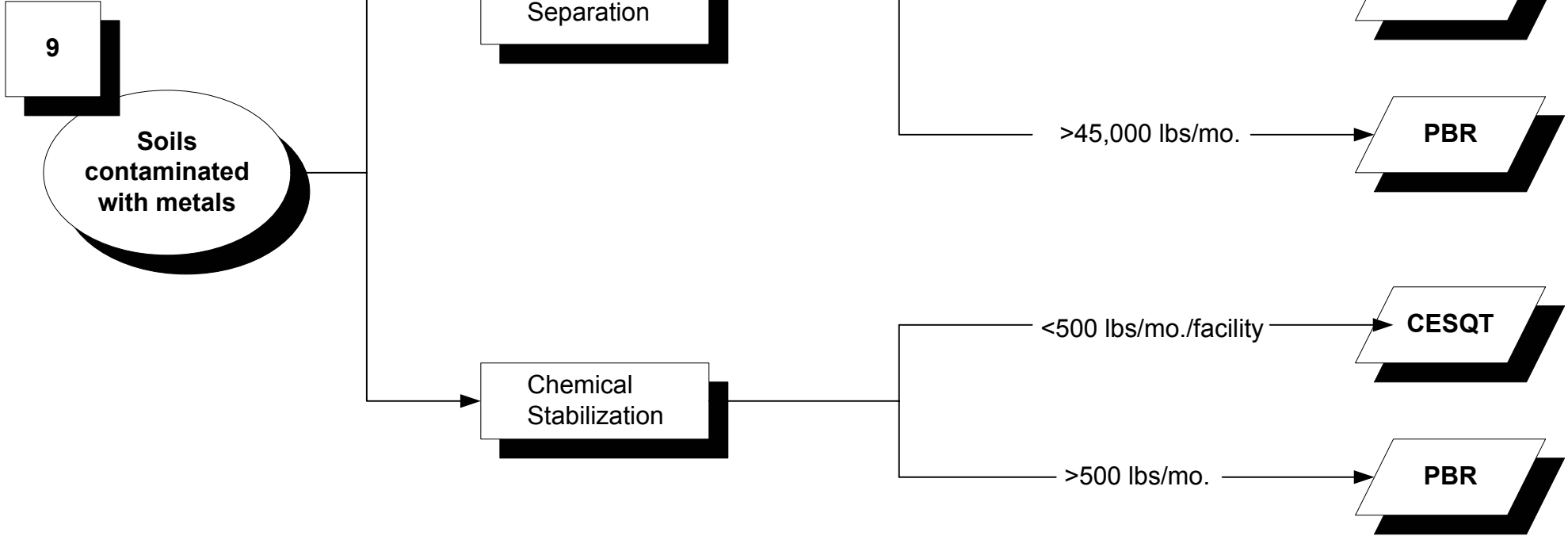


*Must be hazardous solely due to this characteristic
 **Closed except adding/removing (T22, § 66265.173)

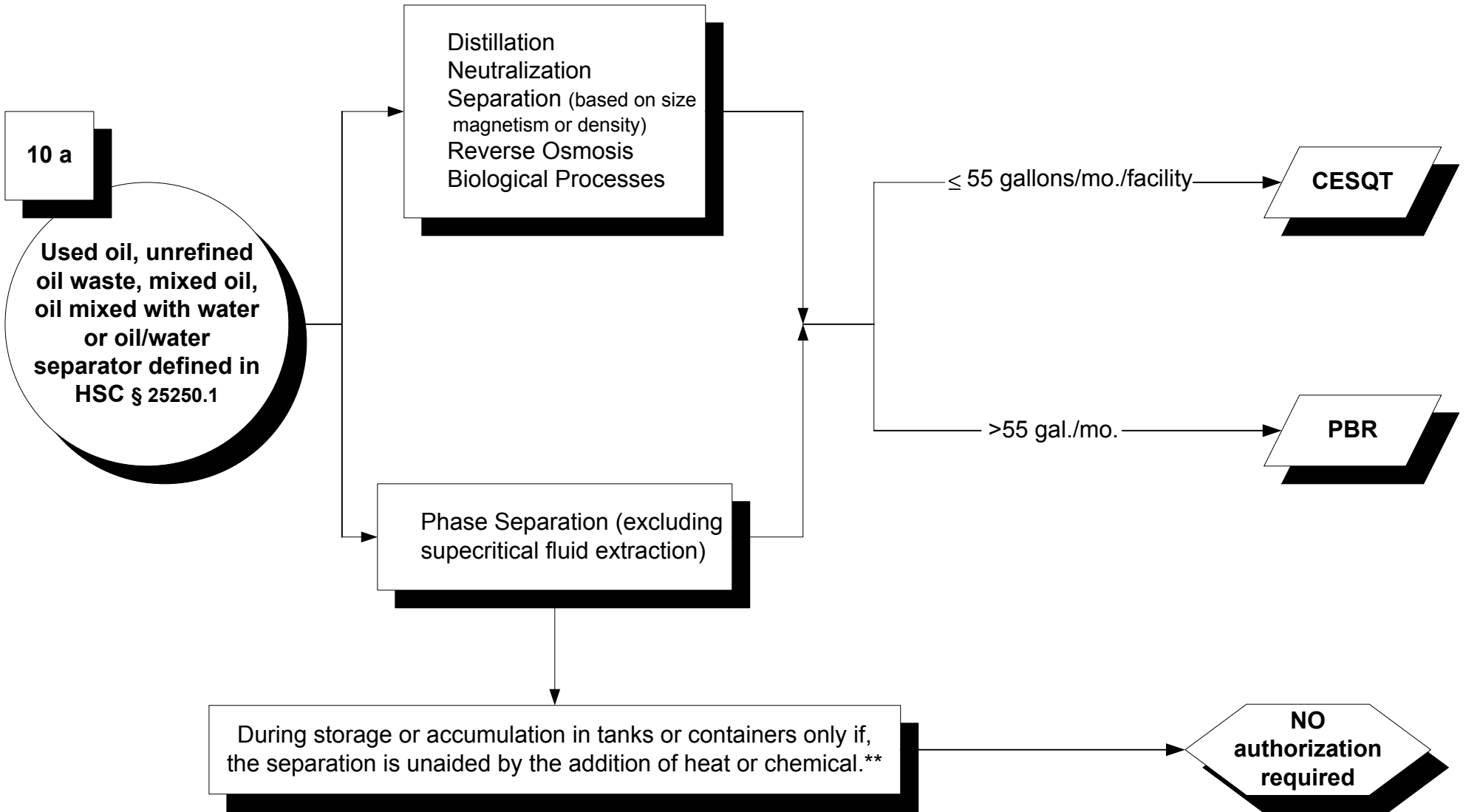


*Must be hazardous solely due to this characteristic

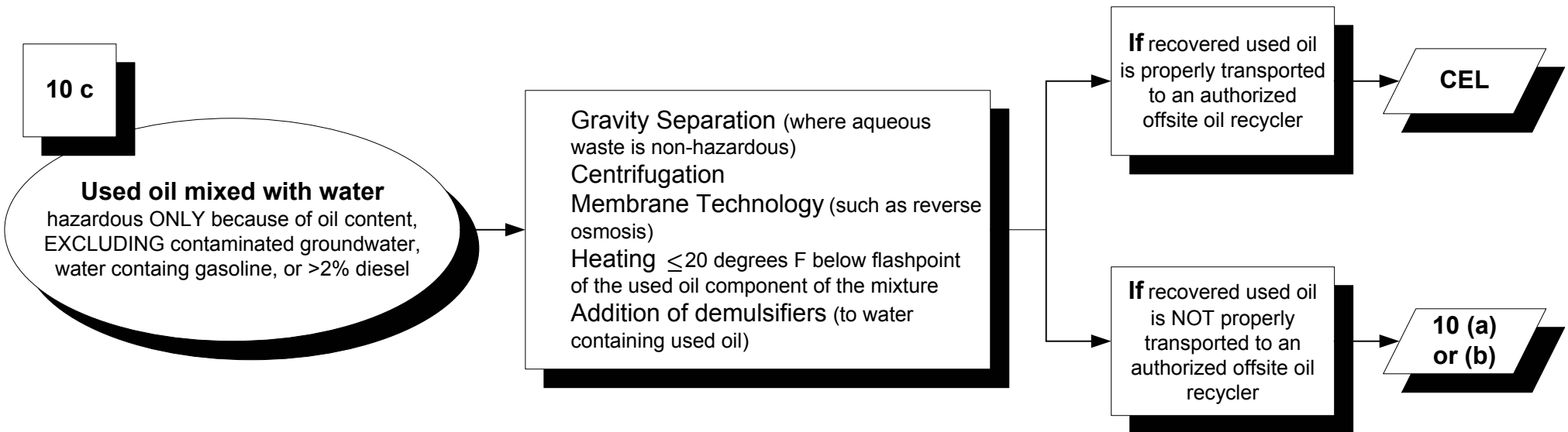
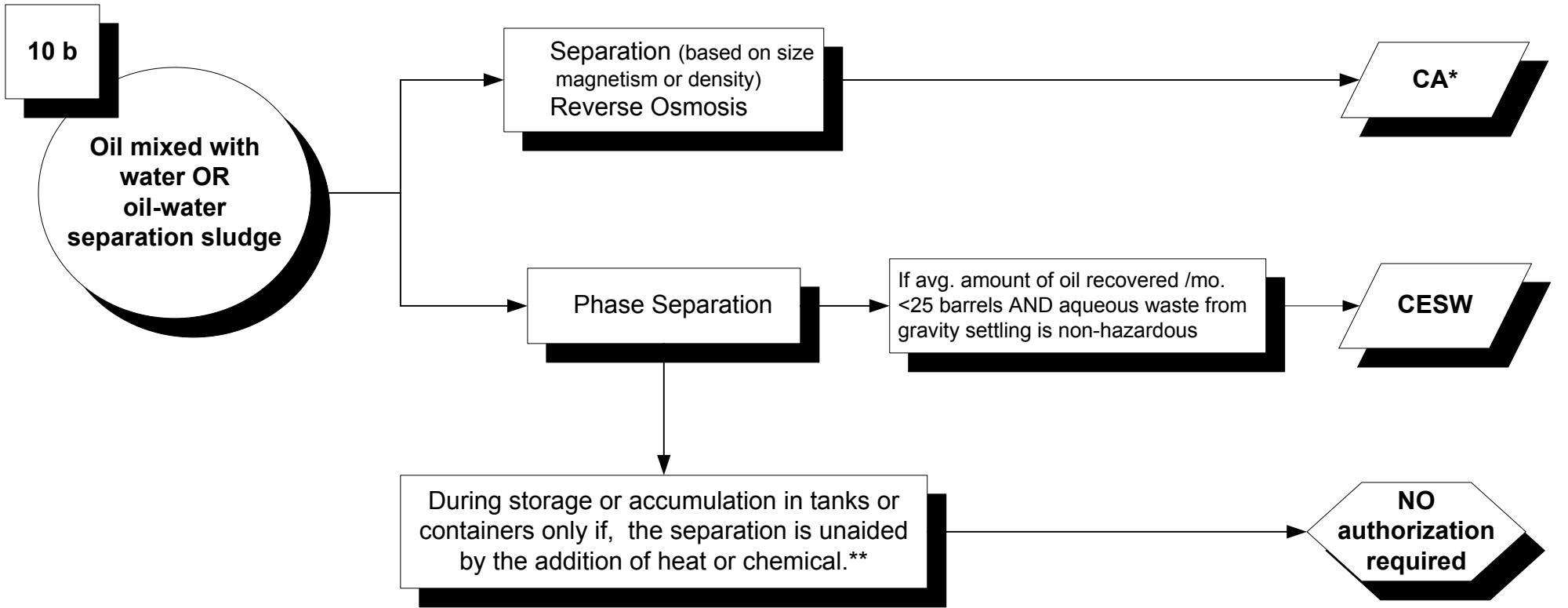




*Must be hazardous solely due to this characteristic

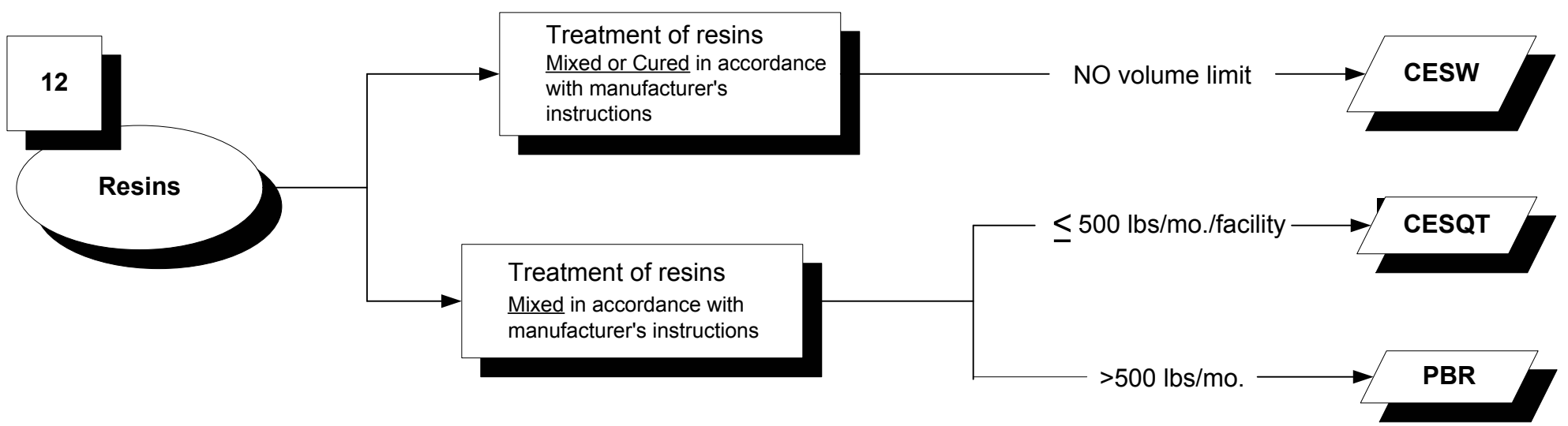
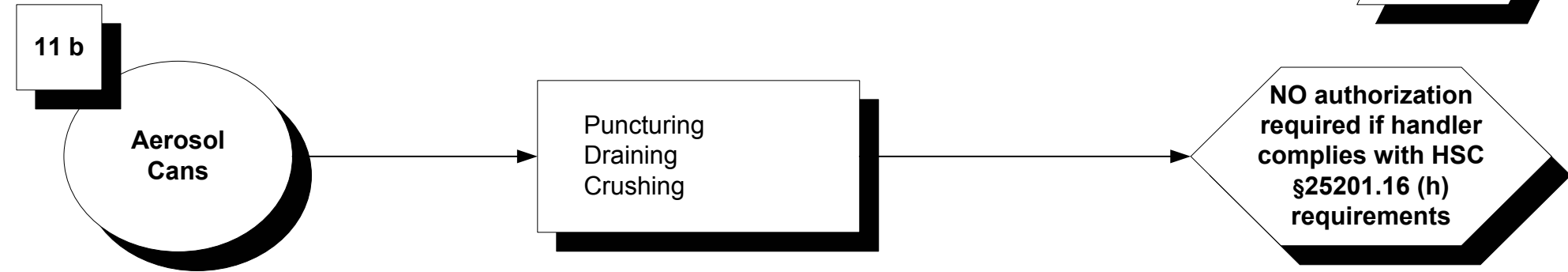
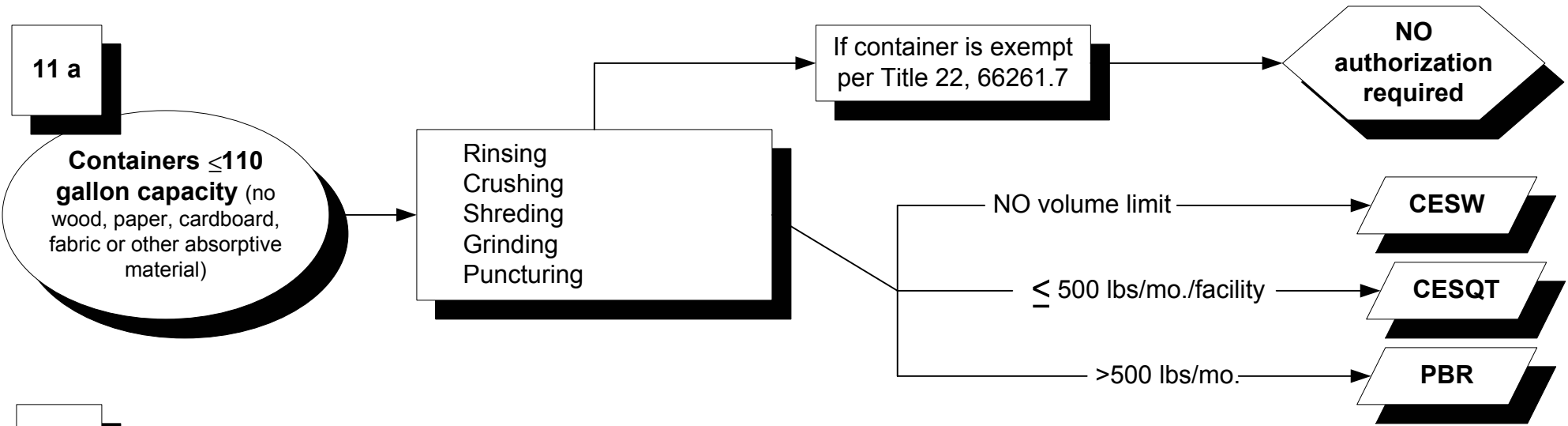


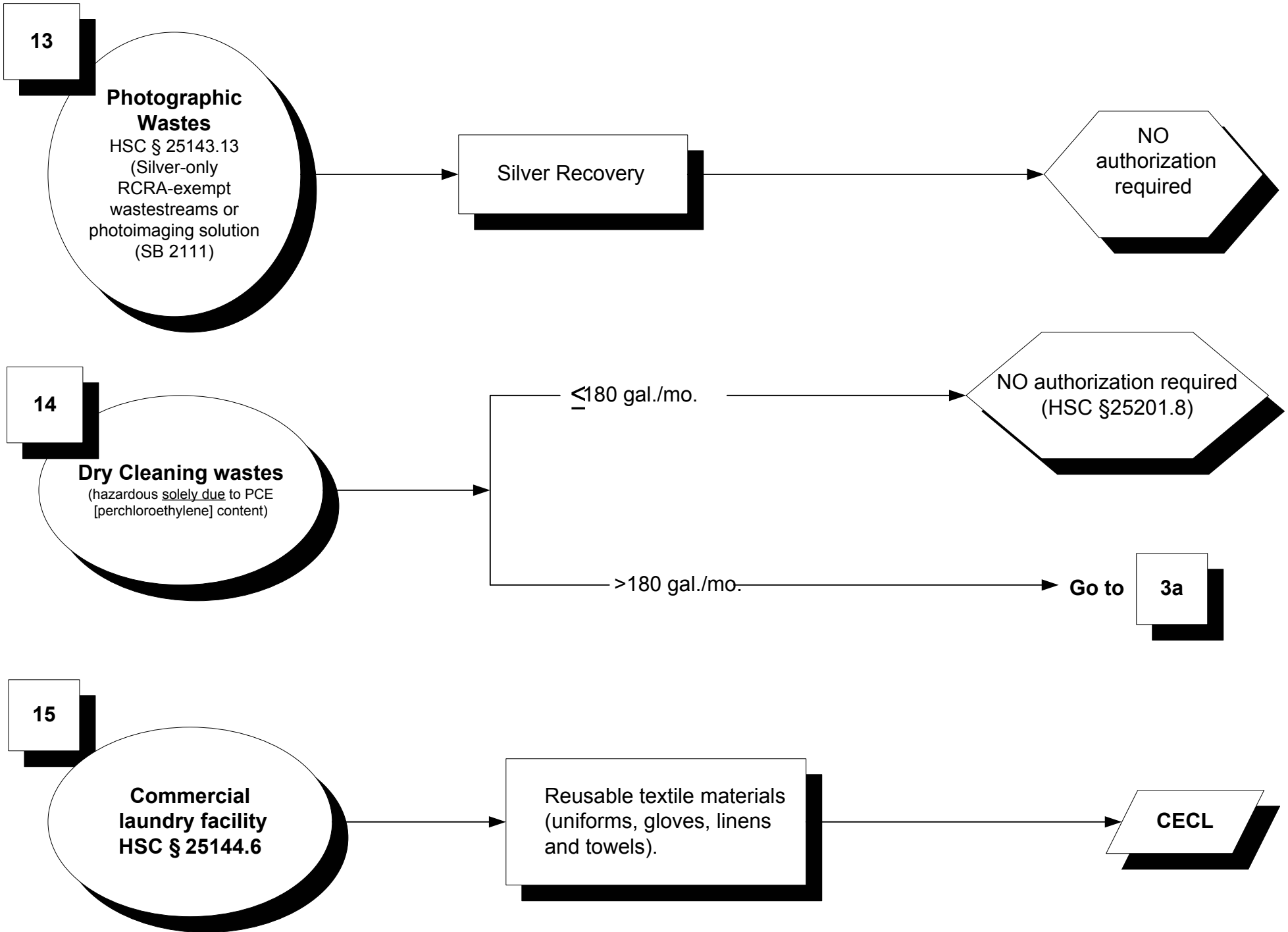
**Closed except adding/removing (T22, § 66265.173)

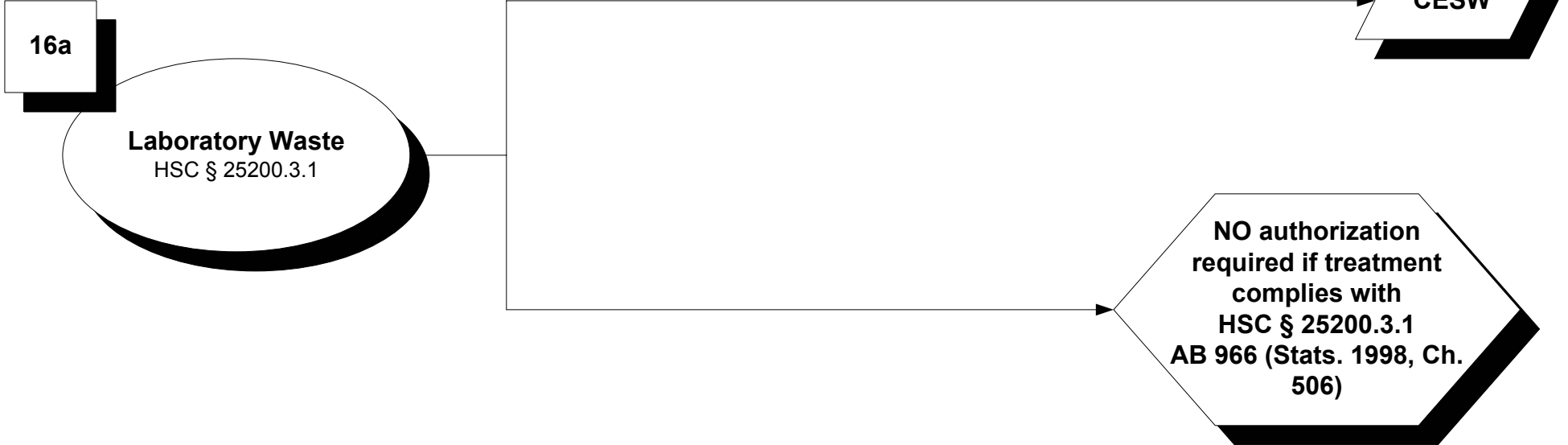


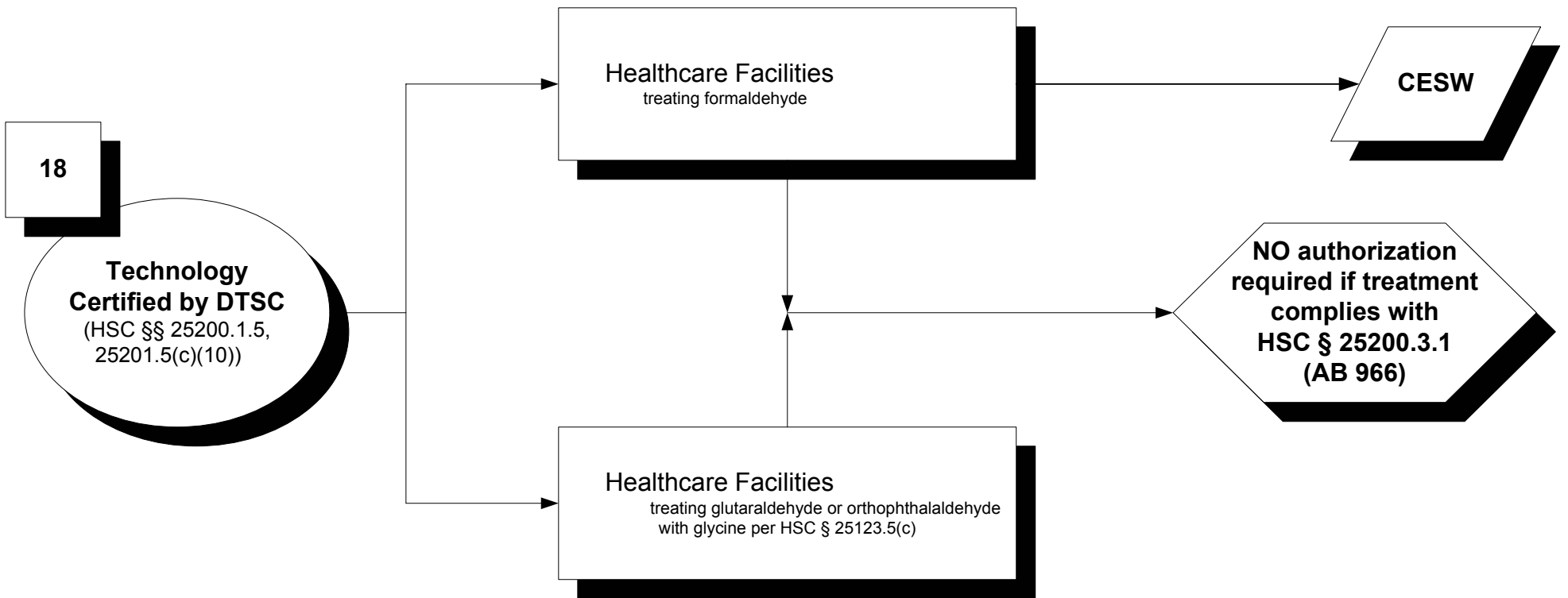
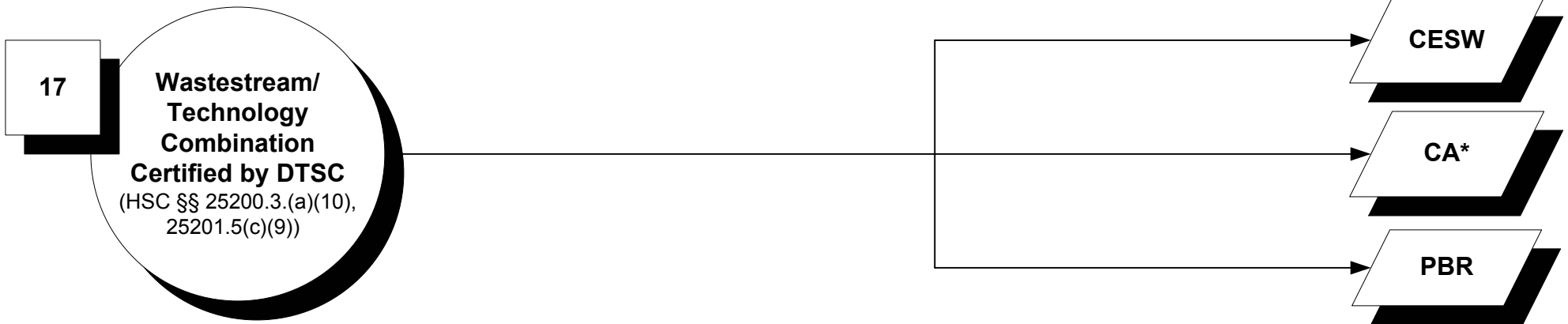
*Must be hazardous solely due to this characteristic

**Closed except adding/removing (T22, § 66265.173)

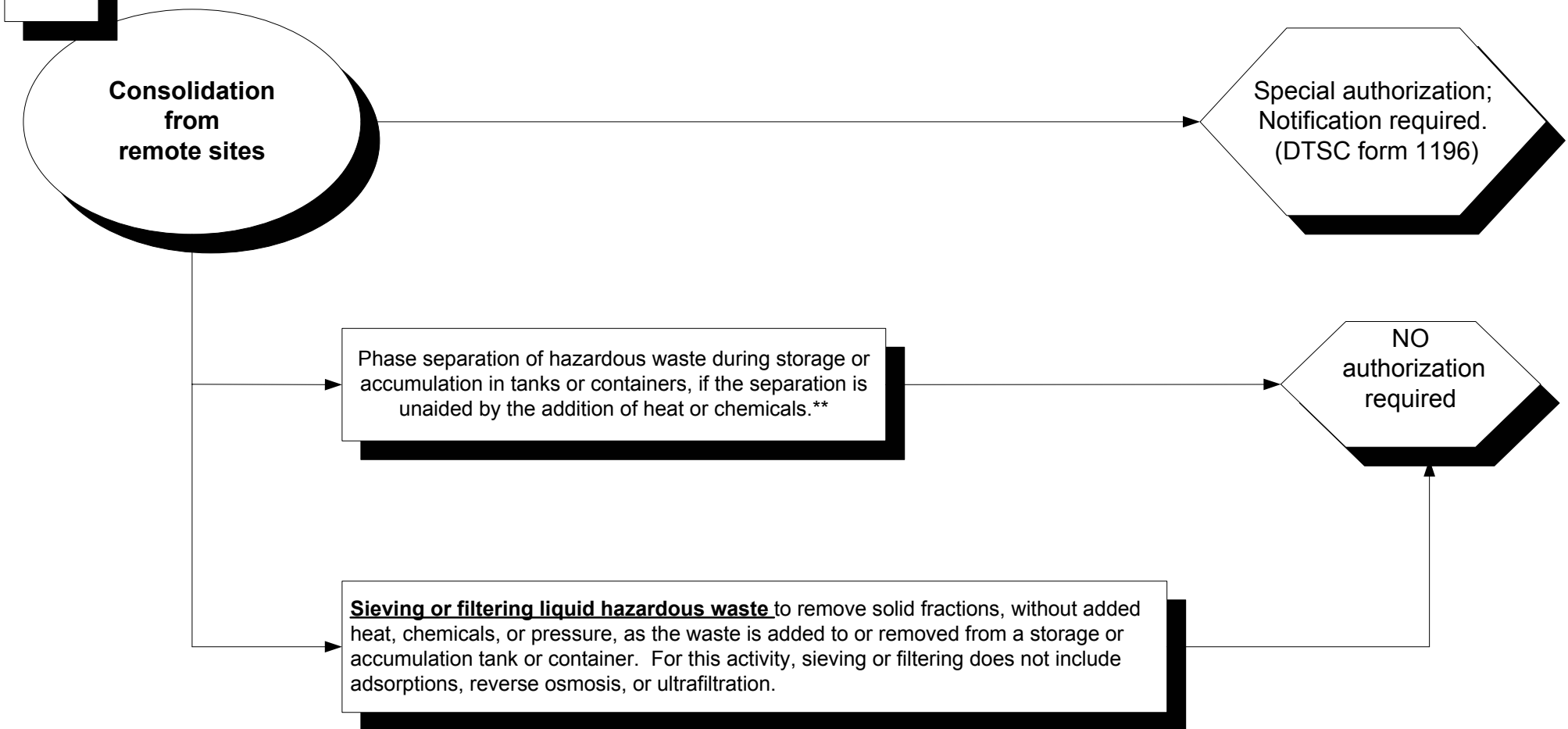








*Must be hazardous solely due to this characteristic



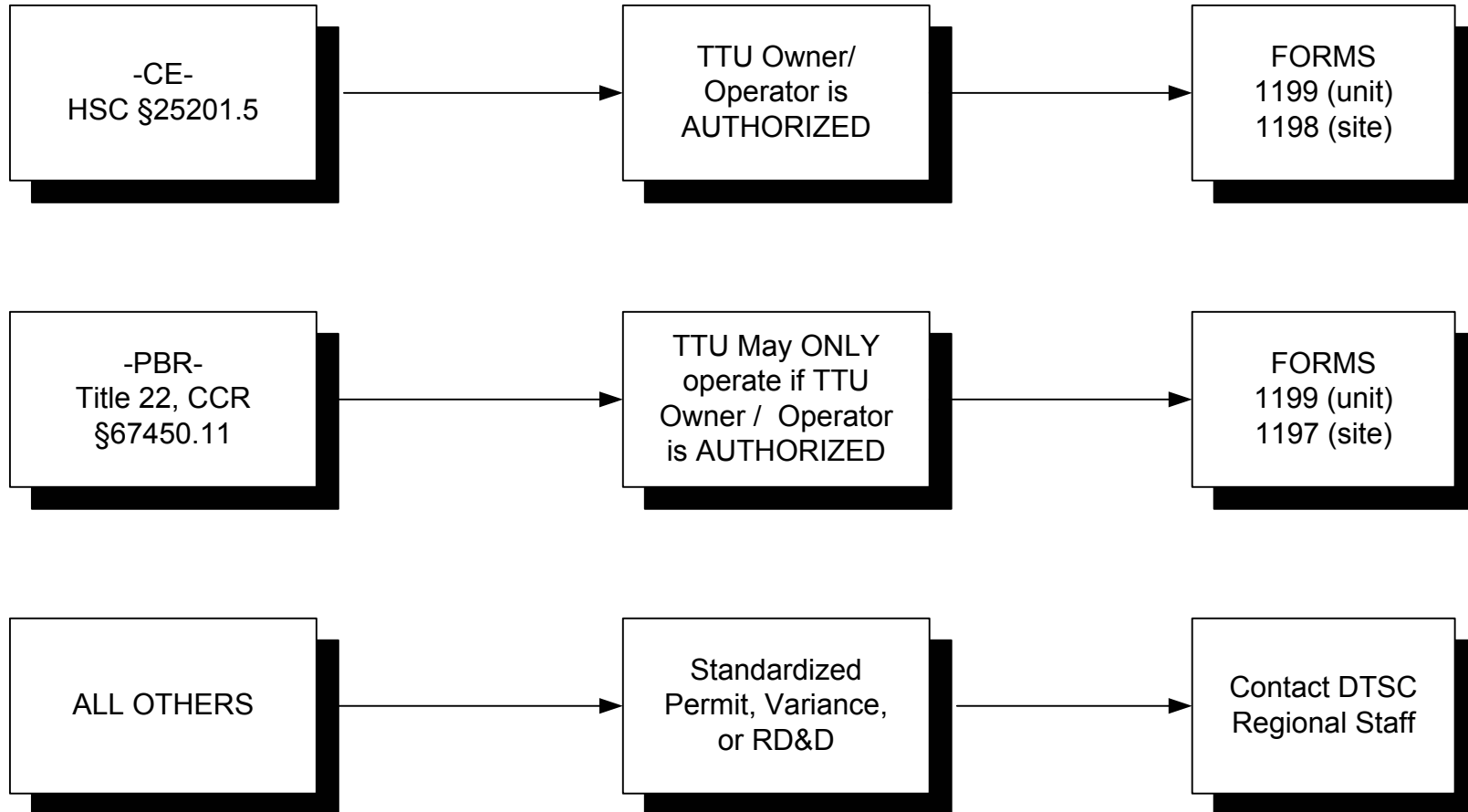
**Closed except adding/removing (T22, § 66265.173)

Transportable Treatment Units

WASTE STREAM & TREATMENT PROCESSES

AUTHORIZATION OPTIONS

NOTIFICATION FORMS



Note - SUBMIT TTU NOTIFICATIONS TO DTSC, NOT TO THE CUPA.

PBR Collection Facilities

