

STANISLAUS COUNTY

Department of Environmental Resources



2017 ANNUAL REPORT



2017

Stanislaus County Board of Supervisors

Kristin Olsen	Vito Chiesa	Terry Withrow	Dick Monteith	Jim DeMartini
District 1	District 2	District 3	District 4	District 5

Board of Supervisors' Priority:
***Delivering Efficient Public Services and
Community Infrastructure*** to benefit residents
and businesses

DEPARTMENT OF ENVIRONMENTAL RESOURCES MISSION STATEMENT:

The Department of Environmental Resources strives to promote a safe and healthy environment and improve the quality of life in our community through a balance of science, education, partnerships and environmental regulation.

FISCAL SERVICES

Compliance Organization Accountability Leadership Ethics Knowledge Support Budgets Information
Accuracy Payments Collections Grant Funding and Monitoring Transparency Efficiency Sustainability

Fiscal Services is responsible for the diligent and accurate management of 21 budget units and over 40 different departmental funds. The department's financial goals are met through careful analysis and budgeting, grant funding, and fees for services collected.

**DER's Proposed
FY 17/18
Total Operating
Budget is
\$38,564,436**

**The increase is
due to several
large projects
scheduled for
completion in
FY 17/18**

21 Budgets

Manage/Track over 40 Funds

Accounts Payable

Accounts Receivable

Purchase Orders

Vendor Insurance Approval

Contract Functions

Grant Administration

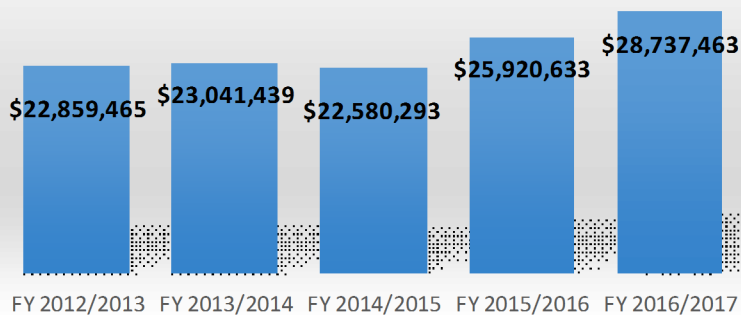
**3 Different Payrolls
(DER, Parks & Recreation,
and the Landfill)**

2 Different Billing Systems

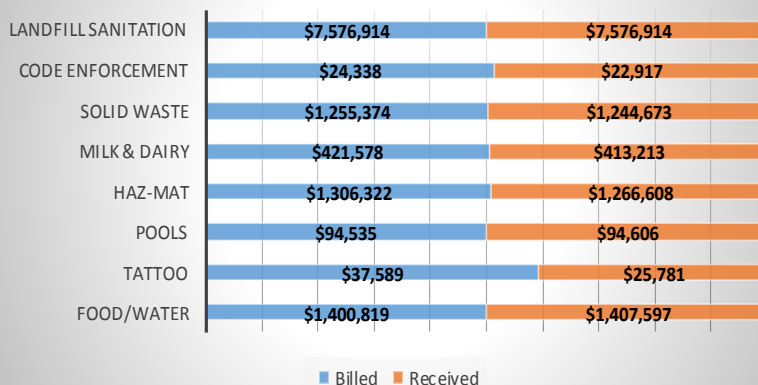
Program Billing Reconciliations

Special Projects

DER Operating Budget FYs 12/13 - 16/17



DER Fee Revenue - FY 2016-2017



Accounting collects payments via mail, online, phone, journal vouchers, and in-person for fines, fees for services, grant claims, change of ownerships, plan reviews, permits, and various State surcharges. All of Environmental Resources' program accounts are maintained, invoiced, and processed through the accounting office.

Note: The Fiscal Services Operating Budget and Fee Revenue statistics provided in this DER Annual Report do not reflect the Parks and Recreation Department's Operating Budget, Revenue, or accounting and budget functions that are also performed by the Department's Accounting Division.

C

Code

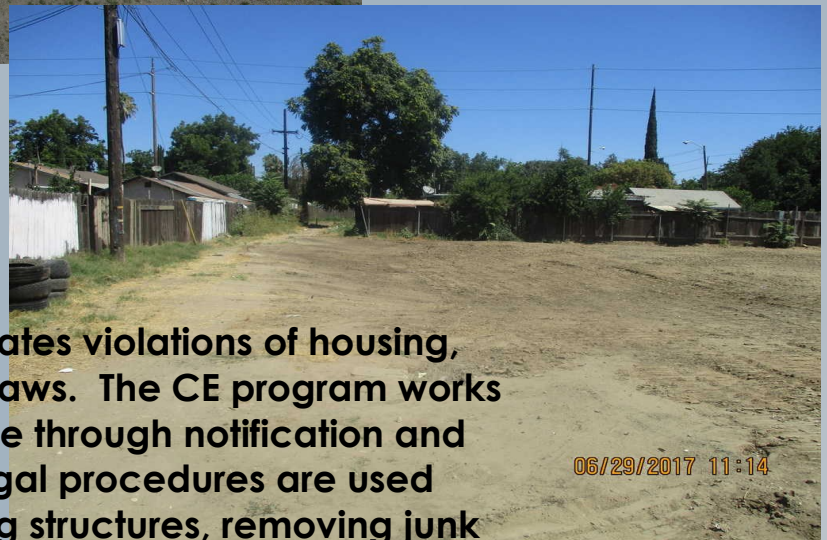
E

Enforcement



Before

After



Code Enforcement (CE) investigates violations of housing, zoning and vehicle abatement laws. The CE program works to achieve voluntary compliance through notification and education. When necessary, legal procedures are used including civil citations, boarding structures, removing junk and rubbish, towing abandoned vehicles, and abating other nuisance conditions. The goal is to maintain and improve property values and the quality of life for residents, visitors and business owners.

In 2017, the Environmental Resources Department maintained code enforcement by investigating **1,306** complaints regarding environmental concerns such as illegal dumping, refuse disposal and nuisances creating health & safety issues as follows:

- ♦ **127** Investigated complaints of improper or illegal use of recreational vehicles being used for permanent occupancy
- ♦ **439** Performed zoning enforcement activities related to non-permitted or illegal land use
- ♦ **69** Investigated complaints associated with vehicle storage yards, junkyards and automobile dismantlers
- ♦ **394** Investigated abandoned vehicles complaints
- ♦ **47** Investigated complaints of vacant structures with uncontrolled access
- ♦ **230** Investigated complaints for unlawful accumulations of junk, refuse and rubbish
- ♦ In addition to investigating these 1,306 environmental complaints, CE also investigated **394** graffiti complaints.

Code Enforcement Assists to....

- ◆ Help in the fight to reduce crime and improve quality of life.
- ◆ Protect health and safety.
- ◆ Help maintain property values.
- ◆ Prevent the physical and aesthetic deterioration of our community.

In 2017, CE responded to 394 abandoned vehicle complaints and verified and abated 106 abandoned vehicles.

CE STAFF:

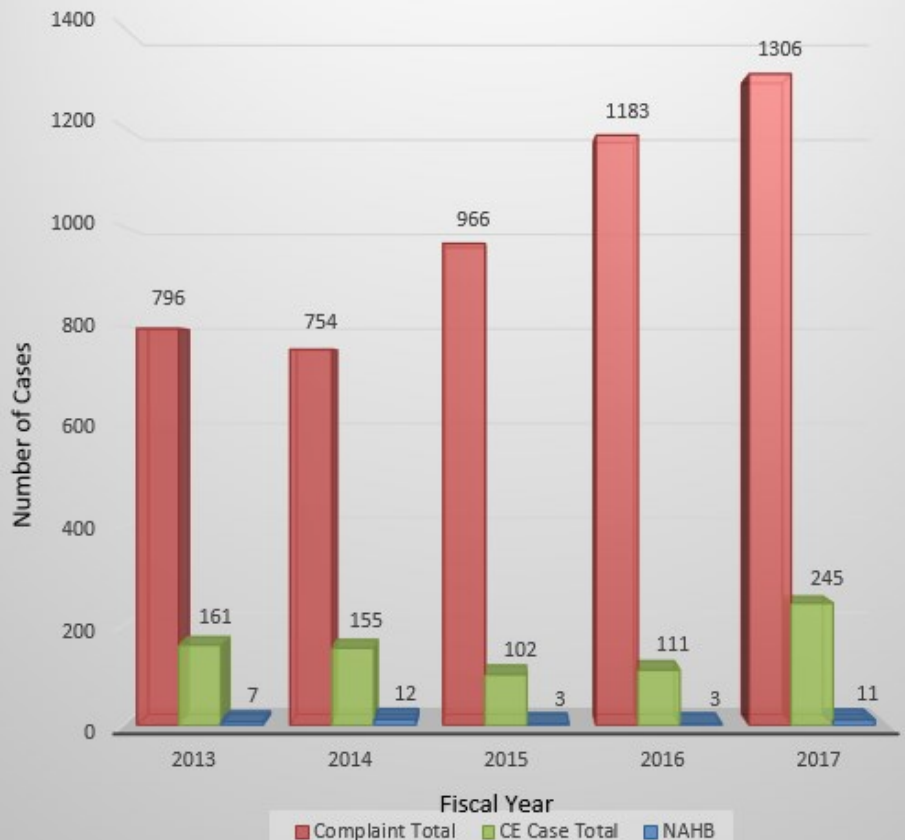
1 Code Enforcement Manager
4 Zoning Enforcement Officers (ZEO)
1 Deputy ZEO
1 Graffiti Abatement ZEO
1 Park Aide
1 Administrative Secretary



CE strives to achieve voluntary compliance through education and personal contact. A CE case is opened when a zoning violation is confirmed and voluntary compliance is not achieved within a reasonable time; typically 30 days of a complaint received.

If enforcement becomes necessary, a Notice and Order to Abate and subsequent citations are issued. In these instances, staff continue to work with the property owner via compliance inspections to ensure a good faith effort is made to correct violations within a reasonable time; typically 45 days of opening a CE case. If violations remain after staff efforts and citations, then Nuisance Abatement Hearing Board (NAHB) enforcement may be utilized as a last resort. Stanislaus County has seen a steady rise in the number of zoning related complaints. The chart identifies trends over the past 5 years.

Department of Environmental Resources
Code Enforcement
Complaints, Cases, and NAHB
Comparison



Environmental Health

Environmental Health (EH) Programs Include:

- Body Art Program
- Food Program
- Liquid Waste / Land Use Program
- Recreational Health Program
- Water Program

Food Program: EH enforces the California Retail Food Code by providing routine and follow-up inspections, conducting food-related complaint investigations, and reviewing plans of food facilities. At this time, there are over 2,100 Permitted Food Facilities and about 350 Mobile Food Facilities in the county.

All EH's food-related inspections can be found on <http://sbtapp1.co.stanislous.ca.us/DERFoodFacilities/>. The site allows users to search by facility name, street name or by city.



Recreational Health Program: EH enforces the State and Local health codes at all public, commercial and multi-family residence Pools and Spas in Stanislaus County. The Department provides routine and follow-up inspections, conducts recreational health-related complaint investigations, and reviews plans of pools and spas. At this time, there are over 420 public pools and spas in the county.

EH Staff:

- 1 Program Manager
- 5 Senior Environmental Health Specialists
- 3 Environmental Health Specialist III's (1 Extra Help)
- 4 Environmental Health Specialist II's
- 7 Environmental Health Specialist I's (2 Extra Help)
- 1 Administrative Secretary

Body Art Program: EH enforces the Safe Body Art Act, which regulates tattooing, permanent cosmetics, branding, and piercing. The Department provides routine and follow-up inspections, conducts body art-related complaint investigations, reviews plans of body art facilities, and processes all body art practitioner registrations annually. At this time, there are over 70 permitted body art facilities and about 155 registered practitioners in the county.



Environmental Health

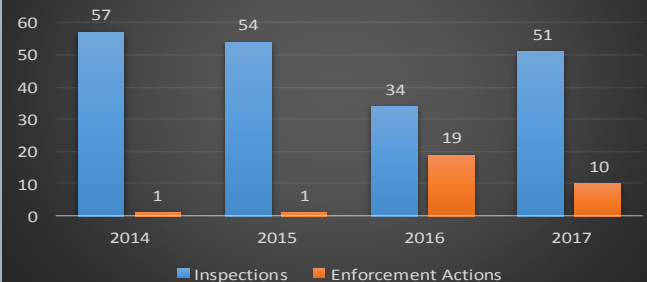
Department of Environmental Resources is the local primacy agency for the State Waterboards and is responsible for State Small Water Systems and Public Water Systems that have less than 200 connections in Stanislaus County. The Department monitors water quality of these water systems routinely and takes appropriate actions to ensure the water quality meets State standards. At this time, there are over 210 State Small and Public Water Systems in the County. The Department also oversees the construction and destruction of domestic, irrigation, agriculture, and industrial wells in the unincorporated area of the county. Last year, the Department issued over 250 water well installation/destruction permits.



In 2017:

- Inspected **2,105** Food Facilities and **352** Mobile Food Facilities
- Conducted **353** food-related complaint inspections.
- Inspected **429** pools/spas
- Resolved **279** Housing complaints
- Issued **157** septic repair permits and **251** water well permits

Stanislaus County Drinking Water Inspections and Enforcement Actions



Environmental Health is responsible for all onsite wastewater treatment systems in the unincorporated area of the County that produce less than 10,000 gallons of wastewater per day. The Department conducts inspections on the new installations and repairs of these systems. Last year, DER drafted Stanislaus County's Local Agency Management Program Plan, and it was approved by the Regional Water Quality Control Board. The plan will become effective in May 2018. The Department issued over 150 onsite wastewater treatment system repair permits last year.

During the 2017 Floods, EH responded by:

- ◇ Collaborating with the Agricultural Commissioner and the Office of Emergency Services, in assessing and documenting minor and major flood damage to residential and commercial properties. This documentation was utilized to request assistance from the State and Federal government in declaring an emergency.
- ◇ Reviewing and inspecting prospective locations for possible shelter activation with the Red Cross. This included available space for beds, restroom facilities, number of showers available, duration of location availability for shelter use, and possible pet accommodations.
- ◇ Assessing properties at risk of surfacing sewage, which is septic system damage due to water saturating house and/or farm septic systems.

Groundwater

Sustainable Groundwater Management Act (SGMA)

The Sustainable Groundwater Management Act of 2014 (SGMA) changed the landscape of groundwater management in California. SGMA sets the framework for statewide sustainable groundwater management and declares that such authority be given to local public agencies that have either water supply or land use authority, or both. SGMA requires, among other items, the formation of a Groundwater Sustainability Agency (GSA) and preparation of Groundwater Sustainability Plans (GSPs) focusing on long term groundwater sustainability.

2017 Formation of Groundwater Sustainability Agencies (GSAs)

Environmental Resources completed the formation of the necessary GSAs in 2017. Stanislaus County is a participating member in 5 GSAs. Public and private water agencies and user groups within each of the following groundwater subbasins work together as a GSA to implement SGMA:

1. Eastern San Joaquin Groundwater Subbasin

Portion of Stanislaus County occurring north of the Stanislaus River commonly referred to as the “northern triangle”

2. Modesto Groundwater Subbasin

Area of land located between the Tuolumne and Stanislaus Rivers, occurring west of the Sierra Nevada Foothills and east of the San Joaquin River.

3. Turlock Groundwater Subbasin (East)

Area of land located between the Tuolumne and Merced Rivers, occurring west of the Sierra Nevada Foothills

4. Turlock Groundwater Subbasin (West)

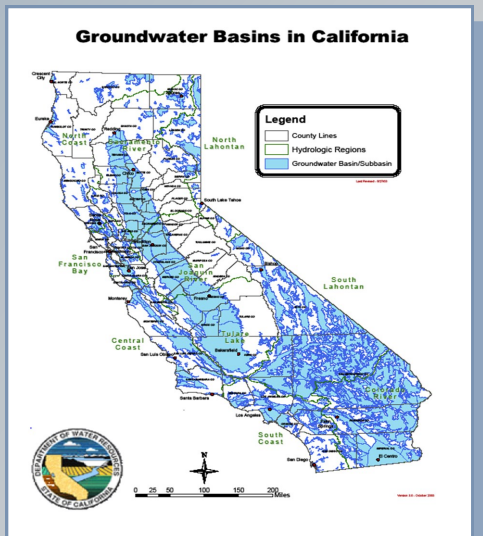
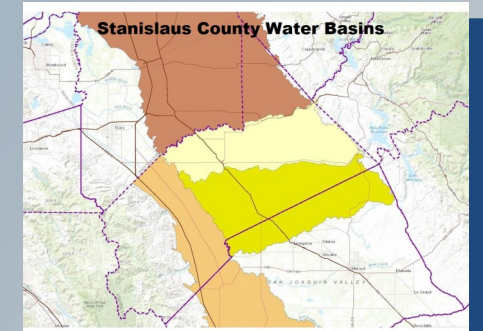
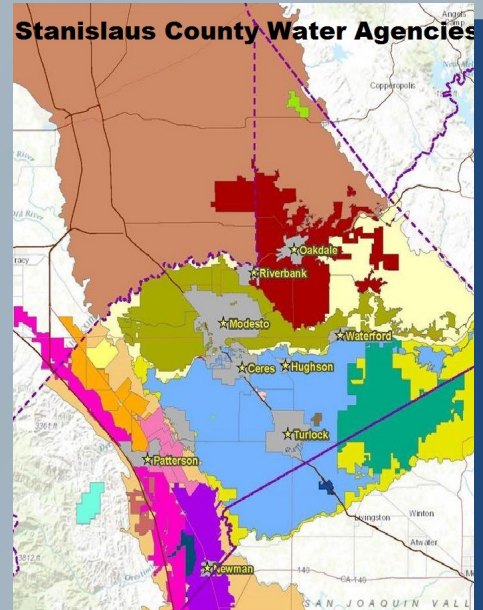
Area of land located between the Tuolumne and Merced Rivers, occurring east of the San Joaquin River

5. Delta-Mendota Groundwater Subbasin

Area of land within Stanislaus County located west of the San Joaquin River and east of the basement rock of the Coast Range

The formation of the GSAs were completed in 2017

Stanislaus County Water Agencies



Groundwater

Programmatic Environmental Impact Report (PEIR)

The County was awarded a \$250,000 grant from the Department of Water Resources to prepare a Programmatic Environmental Impact Report (PEIR) that facilitates implementation of its Groundwater Ordinance, streamlines the permit application and review process for new wells, and provides a foundation for development of future Groundwater Sustainability Plans (GSPs) under SGMA. The PEIR will integrate and evaluate impacts associated with existing water and groundwater management efforts throughout the County in light of forecasted water supply and demand, land use trends, and well permitting activities. In preparing the PEIR, the County engaged stakeholders throughout the County to build on the extensive history of groundwater management planning and related technical studies that have been completed. As such, the objective of the PEIR is not only to benefit the well permitting process, but also to contribute to County-wide collaboration and technical analysis that supports preparation and implementation of GSPs. In 2017, Stanislaus County Environmental Resources continued to prepare the PEIR with local stakeholder input. The goal is to have a certified final PEIR by June 2018, that meets all requirements of CEQA.

Groundwater Ordinance (GWO)

Stanislaus County Board of Supervisors adopted a Groundwater Ordinance (GWO) in 2014 to address sustainable groundwater management and export of groundwater from the County. The GWO codifies requirements, prohibitions, and exemptions that assure sustainable groundwater extraction from new wells. The ordinance framework is structured primarily on the principles of the Sustainable Groundwater Management Act of 2014 (SGMA).

PEIR Objectives

- ⇒ Streamline CEQA review and technical evaluation for discretionary well permit applications
- ⇒ Create more robust technical basis for well permitting program
- ⇒ Begin data compilation, model construction and evaluation efforts that will help inform GSAs in groundwater management planning and GSP development
- ⇒ Scheduled for completion in June 2018

Hazardous Materials

HM Division staff includes a Program Manager, 3 Senior Environmental Health Specialists, 4 Environmental Health Specialist III's, 3 Environmental Health Specialist II's, 2 Environmental Health Specialist I's, 2 Hazardous Materials Technicians, a Part Time Hazardous Materials Technician, 2 Park Aides Extra Help, and an Administrative Secretary.

Hazardous Materials Division (HazMat)

regulates and inspects **3,615** businesses that handle hazardous materials and medical waste, maintains an emergency response team, operates the Permanent Household Hazardous Waste Collection Facility (HHW), and approves permits for installing/constructing and destroying groundwater monitoring wells and soil borings/geotechnical borings.

CUPA

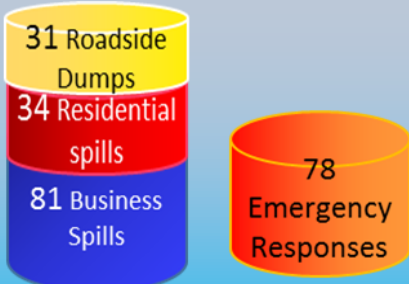
On January 1, 1997, Stanislaus County was certified by the California Environmental Protection Agency (Cal EPA) to be the Certified Unified Program Agency (CUPA) for all of Stanislaus County. In its capacity as a CUPA, the County, by and through the Hazardous Materials Division of the Department of Environmental Resources, administers the following programs, pursuant to the authorities granted by the California Health and Safety Code §25404:

- Hazardous Materials Business Plan Program (HMBP)
- California Accidental Release Prevention Program (CalARP)
- Hazardous Waste Generator Program
- Tiered Permitting Program
- Underground Storage Tank (UST)

2,144 Inspections



Issued **117** Monitoring Well permits



145 Complaints **78** Emergency Responses

Stanislaus County Area Plan



The HazMat staff are also responsible for the development and update of the Hazardous Materials Emergency Response Plan which establishes specific emergency management policies and procedures for coordinating Stanislaus County's integrated response to hazardous materials incidents. By developing this plan, both businesses and government agencies are better prepared to respond to hazardous materials incidents, thus minimizing potential risks to life, property and the environment.



HazMat Emergency Responders

DER Hazardous Materials Emergency Responders are available to respond to all hazardous materials and other environmental health emergencies in Stanislaus County 24 hours a day, 365 days a year. HazMat has 12 CSTI (California Special-

ized Training Institute) certified hazardous materials specialists and two specialists on the Stanislaus Countywide Hazardous Materials Response Level A Team. All team members participate in specialized training, such as the Live Ammonia Release Drill in November 2017.



2017 Community & Outreach Training:

- Ammonia Live Event Response Training
- Central Valley Chemical Safety Day
- CalARP/RMP Workshop Training
- Hazardous Waste Generator Workshop



Outreach Events:

- Earth Day
- 6th Annual Chemical Safety Day Stanislaus
- America Recycles Day
- 4 Drop the Drugs events in partnership with Stanislaus County Behavioral Health and Sheriff's Departments

Committee Participation:

- Local Emergency Planning Committee (Local Environmental Position)
- CUPA FORUM Board Member
- Central Valley Chemical Safety Committee (Chair)
- Stanislaus County Emergency Response Team (Technical Reference)



CESQG The HHW facility is home to a Conditionally Exempt Small Quantity Generator (CESQG) Program. Businesses that generate less than 220 lbs of hazardous waste per month may apply with the Department. Approved CESQG businesses can bring hazardous wastes to the HHW facility on Wednesdays by appointment only.

HHW Facility 2017

106
CESQG
Businesses



8,000
Households
served



HHWCF
Permanent Site
749,000 lbs

31
TEMP EVENTS
488,356 lbs

Sharps: 8,142 lbs
Universal waste: 47,526 lbs

Electronic waste: 251,766 lbs

2017 Floods and HazMat response:

HazMat collaborated with the Office of Emergency Services in assessing and documenting any potential hazardous material/hazardous waste entering the rivers from residential and commercial properties. This documentation was utilized to request assistance from the State and Federal government in declaring an emergency. HazMat was part of a team performing inspections along the river assessing impacted areas for potential hazardous material/hazardous waste concerns.

Reuse Program

The HHW Facility has a reuse program for any items that are received in new or near-new condition. They are set aside and stored in a separate reuse structure opened once a month to the public to take home any products that they can use. This helps residents save money on expensive supplies and diverts those products away from landfills and treatment/disposal facilities.

The HHW Facility collected over 45,435 pounds of reuse products in 2017.



Find us on
Facebook

[facebook.com/
StanislausHHW](https://facebook.com/StanislausHHW)



stancounty.com/er/hazmat/pdf/household-hazardous-waste.pdf

Landfill

The Fink Road Sanitary Landfill is owned by Stanislaus County and is operated by the Department of Environmental Resources. The Landfill has been providing municipal solid waste services to Ceres, Hughson, Modesto, Newman, Oakdale, Patterson, Riverbank, Turlock, Waterford, and the unincorporated areas of Stanislaus County since its opening in 1973. It is open to all private citizens, businesses, school districts and local government agencies.



Landfill vs. Dump... A modern landfill is a site engineered to contain solid waste and prevent contamination of air and groundwater. A garbage dump is an unmanaged pile of refuse without control of environmental impacts or scavengers. The Fink Road Sanitary Landfill is a Class III landfill for nonhazardous municipal solid waste.

Landfill staff includes 2 Program Managers, a Lead Worker, 3 Landfill Equipment Operator III's, 3 Landfill Equipment Operator II's, 4 Landfill Equipment Operator I's (2 Extra Help), an Account Technician, 3 Account Clerk III's (1 Extra Help), 4 Park Aides (2 Extra Help), and 2 Staff Services Coordinators (Extra Help).



In 2017, the Landfill purchased a new Caterpillar 623K Wheel Tractor Scraper and a Caterpillar 420F Backhoe. These new pieces of equipment assist in moving dirt to cover the trash daily and maintain storm drains, ponds and organize our recycling area.



Landfill

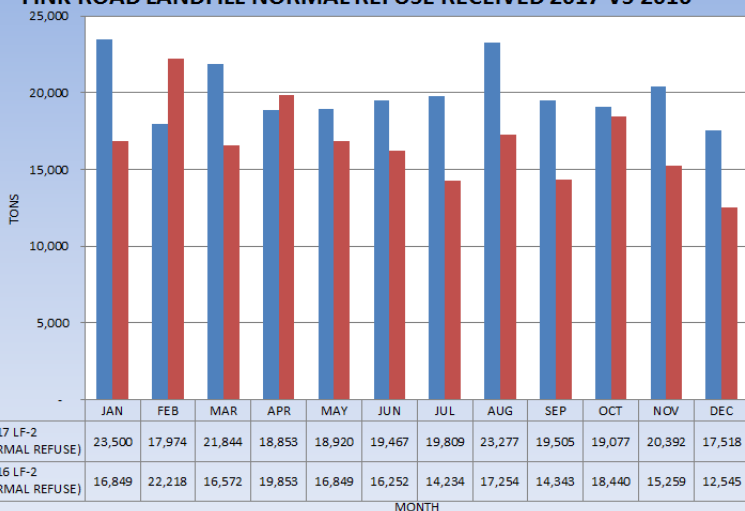
4000 Fink Road
P.O. Box 86
Crows Landing,
California 95313
Main: (209) 837-4800
Fax: (209) 837-4802
8:00 a.m. - 4:00 p.m.,
Monday - Saturday
Closed on Sundays,
July 4th, Thanksgiving
Day, Christmas Day,
New Year's Day, and
after 12:00pm on
Christmas Eve

A **Accepted Waste:** The landfill accepts most industrial, commercial, and residential waste, including: household and commercial garbage, construction debris, roofing materials, non-friable asbestos, animal remains, and concrete/inert materials. Some materials have separate environmental requirements or pricing and you must notify the attendant if you are unloading: televisions, computers, or electronics, appliances (washing machines, dryers, refrigerators, etc.), mattresses, tires, large and/or bulky items or waste that requires special handling.

The landfill does not accept: car bodies, septic tank waste, liquid waste (including but not limited to sludge, paints, thinners, and used oils)*, cannery waste, closed containers, car and household batteries*, and fluorescent light bulbs*.

* Many of these items not accepted at the landfill may be taken to the Household Hazardous Waste collection center or a mobile event.

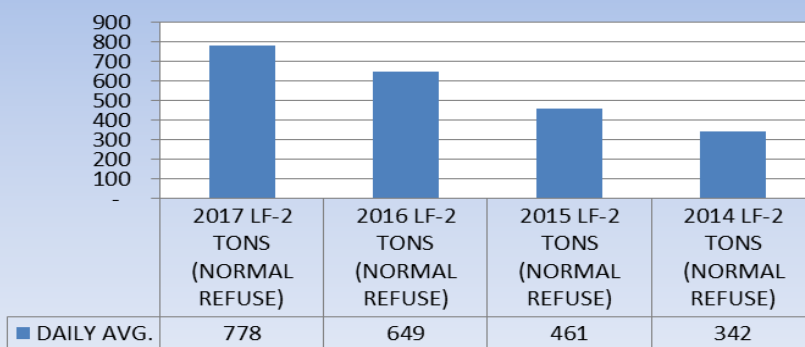
FINK ROAD LANDFILL NORMAL REFUSE RECEIVED 2017 VS 2016



Landfill crews responded to approximately 1,277 illegal dumpsite reports, an increase of 59% from 2016, and picked up approximately 631 tons of refuse, an increase of 73% from 2016.

Roadside cleanup crews collected and recycled over 3,423 illegally dumped tires. 1,300 of those were recycled through the tire amnesty collection program

NORMAL REFUSE TONS DAILY AVG. 2014 TO 2017



Milk and Dairy

The Environmental Resources Department oversees the Milk & Dairy Industry as follows:

- ◇ Inspects market milk ("Grade A") and manufacturing grade ("Grade B") dairy farms for conformance with quality and sanitation requirements
- ◇ Samples milk at the producer level and conducts an analysis for bacterial content and the presence of contaminants, to ensure safety.
- ◇ Routinely collects water samples and analyzes for compliance with standards.
- ◇ Investigates consumer complaints and follows up with appropriate actions.
- ◇ Condemns milk and milk products that may be unfit or unsafe for human consumption.

Did you Know:

Stanislaus County produces 1.2 million gallons of milk a day from 160,000 cows.

In the 2017 Statewide Federal Inspections, Stanislaus County ranked #1 in cow dairies, #2 in sheep dairies and #3 in goat dairies. This is a direct reflection of the DER Milk and Dairy Program's quality in inspections and enforcement.

In the 2017 Floods, dairy farms were at risk of flooding from the Tuolumne and San Joaquin Rivers in Stanislaus County. The Department coordinated and developed plans with local dairies to move cows if necessary. 700 dairy cows were moved.



Milk and Dairy

A New Robotic Dairy in 2017:

Stanislaus County has received its first Robotic Dairy. This state of the art robotic dairy consists of 10 robotic milkers capable of milking 600 cows, three times per day.

Once the cow walks up to the milking box, their collar sends a signal to the main computer to see if she is ready to be milked. If she is, the process will start. If not the gate will open and the cow will exit.

The teat preparation begins and the laser will find the teats and scrub them twice. To entice the cow, grain is fed at a rate equal to the individual cow's average milking time. The computer monitors each quarter time of milking.

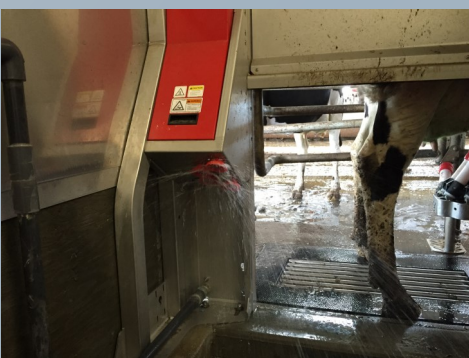
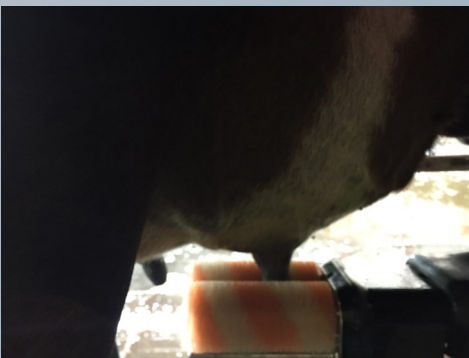
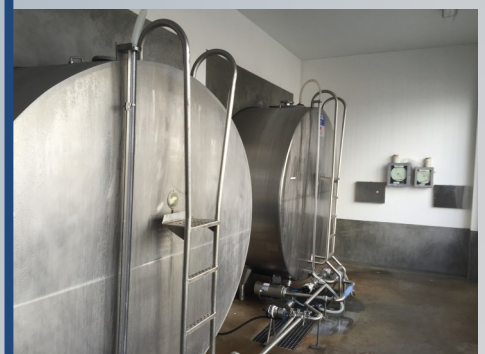
The cup holders and floor are rinsed and the milk is pumped to the milkhouse, stored at 45 degrees or less until a milk tanker picks up the milk.



Did You Know?

Stanislaus County has 1 of 3 robotic milking dairies in the State of California.

Stanislaus County's robotic dairy is the largest in California with 10 robots currently operating.



S Solid W Waste



SW staff includes a Program Manager, Staff Services Coordinator, Staff Services Analyst, Senior Environmental Health Specialist, Senior Resource Management Specialist, 2 Resource Management Specialist III's, 2 Environmental Technicians, a Park Aide and an Administrative Secretary.

The Solid Waste recycling mascot, Willy Recycle, has a Facebook page keeping followers updated on environmental happenings within Stanislaus County. Reuse, repurpose and recycling, along with zero waste sustainability are posts that have been well liked. The page includes public events such as Earth Day, America Recycles Day, the July Filter Exchange Event, Green Night with the Modesto Nuts and Second Chance Week.

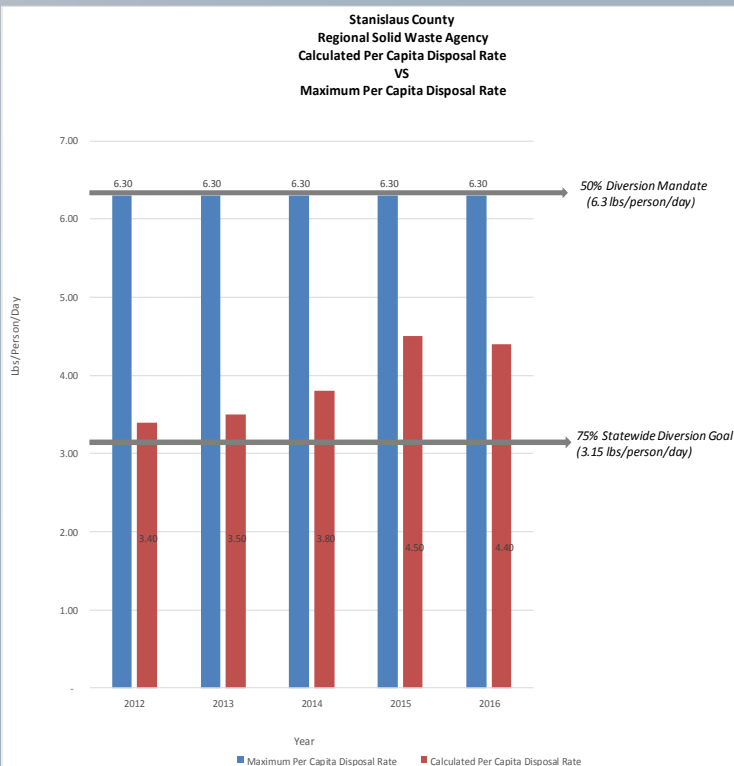
The Stanislaus County Regional Solid Waste Planning Agency consistently meets the State's 50% diversion mandate and continues to work towards the goal of the State that not less than 75% of solid waste generated be source separated, reduced, recycled or composted by the year 2020.

Mandatory Commercial Recycling

On October 6, 2011, Governor Brown signed Assembly Bill (AB) 341 into law. AB 341 provides authority for the California Department of Resources Recycling and Recovery (CalRecycle) to implement a mandatory commercial recycling program statewide. This law went into effect July 1, 2012.

With the passage of AB 341, State law requires all businesses that generate 4 or more cubic yards of waste weekly and all multi-family complexes of 5 or more units to recycle. The purpose of this law is to reduce greenhouse gas emissions by diverting commercial solid waste from landfills and expand opportunities for recycling in California.

Solid Waste is identifying these qualifying business and multi-family units and providing the education and outreach in order for them to achieve compliance. Since the implementation of AB 341, we currently realize a 92% compliance for qualifying businesses and a 60% compliance rate for multi-family complexes. Outreach and education efforts will continue through 2018 and beyond.



Solid Waste

DER sponsored five "Crazy Bottles and Cans" shows focusing on the importance of reuse, recycling and preserving natural resources. The show was presented to three elementary schools within the unincorporated area reaching over 1,000 students.

Staff conducted 27 recycling/stormwater school presentations reaching over 700 K-8 students. A preschool litter library program was conducted at 10 County libraries engaging over 100 children.



www.stancounty.com/er/solidwaste

The Solid Waste Management Division's website, includes information on the Department's various programs and services offered, including: the Refuse Control Ordinance, permit applications for the Food Processing By-products Program, links to franchise hauler information, mattress recycling, used oil and used oil filter recycling, holiday recycling, tire recycling, curbside recycling and composting. The site provides information on upcoming events and available programs such as: school and library recycling presentations, school recycling poster calendar contest, the July Filter Exchange Event, Second Chance Week, Green Night with the Modesto Nuts, Earth Day, and America Recycles Day. The site also includes resources for low interest loans available to certain recycling businesses through the Stanislaus County Recycling Market Development Zone (RMDZ) program. Additionally, the site includes information on the residential Bulky Item Collection Program and current recycling regulations such as Mandatory Commercial Recycling and Mandatory Organics Recycling. You can also find the Stanislaus County Recycling Guide which is a comprehensive guide to available diversion programs, recycling and reuse services and a listing of fun and informative web sites for children and adults.

The Solid Waste Stormwater Program outreach efforts include:

- Conducting over 600 stormwater surveys
- Creating a stormwater brochure which was directly mailed to over 20,000 County residents.
- Creating a postcard and mailed out to over 450 businesses which have the potential for water runoff
- Created a brochure addressing the elimination of green waste entering the storm drains and lastly
- Created a "Cover Your Load" card which is distributed at the landfill and three county transfer stations to vehicles entering without a tarp covering the material to be disposed.

www.stanislausrecycles.org The Solid Waste Division developed and maintains a separate web site dedicated to recycling. It allows county residents to enter their address and the material they want to recycle and/or properly dispose of and the site will show the locations closest to them. The site includes information on events, garbage hauler information and the various programs available to county residents.

1,735 households participated in the Bulky Item Collection Program and over 385 tons of bulky refuse was collected.

Mandatory Organics Recycling Assembly Bill 1826 (AB 1826) known as the Mandatory Organics Recycling was implemented in April 2016 and requires businesses that generate four cubic yards of organic waste per week and multi-family residential housing units of 5 or more to recycle their organic waste. Outreach, education and monitoring efforts regarding AB 1826 include direct mailing of a letter, brochure and submission of a survey, it is then determined if the business qualifies under the regulations. The businesses are kept track of in a database. The direct mailings are conducted annually to keep the database current. AB 1826 information can be found on the County and recycling websites. In 2017, 130 applicable businesses and multi-family residential housing units were mailed the outreach information along with the survey. The Department will begin to roll out organics recycling in the County schools.

Contracts and Special Projects

2017

Fink Road Landfill Infill Project-
The Fink Landfill is currently in the process of developing their last Solid Waste Cells to dispose of refuse at the landfill before they will convert the access road to fill area and expand vertically. This project extends the life of the landfill and prolongs the need to expand offsite.

Geer Road Landfill Groundwater Extraction and Treatment System (GWETS)
DER bid, contracted for, and is finishing construction of a new state-of-the-art GWETS as required by the Regional Water Board. Construction included installing new groundwater extraction wells, conveyance lines, a new groundwater treatment system, infiltration gallery, and associated electrical components.

Heavy Equipment Maintenance-
DER contracted for the preventative routine maintenance of the landfill's heavy equipment and any necessary repairs to the heavy equipment.

Fink Road Landfill Class II LF-3 Cell 4 Base Liner and Leachate Collection System

DER bid, contracted for, and just finished construction of an ash disposal cell with a liner and a leachate collection system to prevent groundwater contamination. The ash comes from the Waste to Energy Facility located on site, which incinerates refuse, converting it to energy to help reduce the amount of waste buried at the landfill.

DER contracted with a Consultant to prepare detailed design plans and specifications for building Cells 6 and 7 at the Landfill for the disposal of solid waste.

DER also contracted for construction quality assurance and management services for the project. This included lab testing of materials, overseeing leak detection of the liner, and detailed daily logs of the work performed on site.

DER completed 2 different contracts for the pick up, transportation and proper disposal or recycling of: batteries and medical waste needles (sharps). DER also monitors 6 additional contracts for the pick up, transportation and proper disposal or recycling of: fluorescent lamps and tubes, electronic waste, paint, household hazardous waste, mattresses, and tires. The Landfill is reimbursed for each mattress collected and some electronic waste products. The HHW facility is reimbursed for some paint, batteries, and electronic waste products.

Hazardous Materials contracted to install a sewer and water line at the Household Hazardous Waste Facility. This project included cutting the existing asphalt, trenching 232' from Morgan Road to the building, tying in to the water line between buildings, back filling, a soil compaction test, replacing a Christy box, and a leak investigation.

Department Expansion



New Tuolumne Building Lease

Environmental Resources leased the Agriculture Center- Suite D in the Tuolumne Building. The space is located right across from our main office and has been converted into much needed offices, cubicles, and meeting room space.



New Storage Room

A block structure located behind our main building has been converted into an enclosed storage space to hold confiscated items by our Environmental Health and Code Enforcement Teams.



New IT Room with 5 cubicles

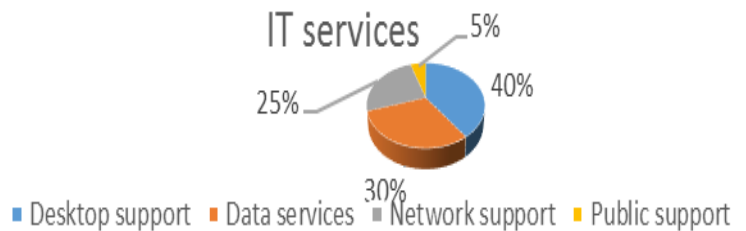
A former supply room has been cleared out and converted into five extra cubicle spaces for the Department.



Information Technology Team 2017:

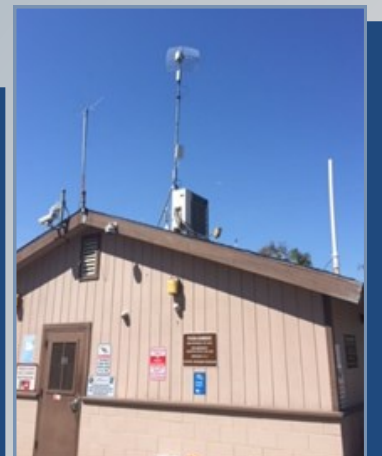
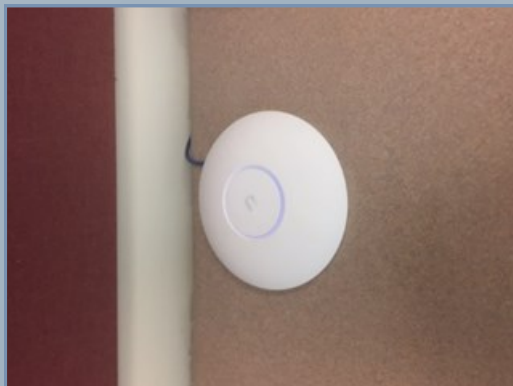
1 Systems Engineer
1 Application Specialist
1 Software Developer
1 Software Developer, Part
Time, Extra Help

The DER Information Technology
Team handled approximately
6000 requests in 2017



2017 Environmental Resources IT Accomplishments:

- Installed new network infrastructure in the newly leased Tuolumne Building for internet, VOIP, and wireless connectivity back to Environmental Resources headquarters and connections to the County network.
- Installed point to point wireless system at Woodward Reservoir to improve connectivity between two remote parts of their network.
- Began deploying Window 10 systems to Department staff to provide users with the latest computer operating systems.
- Installed new email filtering gateway to enhance Departmental security. The gateway has blocked over 300,000 spam messages (around 800 messages a day). It has blocked over 230 viruses and blocked 194,000 malicious connections.
- Began the process of updating our DERONLINE.com page to better serve our water lab customers.
- Planned the migration to Office 365 along with several other agencies.



CLERICAL UNIT

Office CLERICAL:

1 Admin Supervisor
4 Admin Clerk III's
1 Extra Help
Community Aide

Environmental Resources and Parks and Recreation RECEPTION

3800 Cornucopia Way Suite C
Monday-Friday 730 a.m. - 5:00 p.m.

Administrative CLERICAL:

4 Admin Secretaries

The Clerical Unit covers 7 Divisions in the Department of Environmental Resources and for the Parks and Recreation Department

The Clerical Unit Manager oversees both the Clerical Unit and the Milk and Dairy Program.

Clerical Unit

Provides support to Environmental Health Inspectors, Hazardous Materials Inspectors, Code Enforcement Officers, Milk & Dairy Inspectors, Solid Waste Inspectors, Parks & Recreation, and to all Customers who come in to our reception.

Administrative Secretaries

provide extensive, in depth administrative support to the Divisions of:

- ◇ Environmental Health
- ◇ Hazardous Materials
- ◇ Solid Waste
- ◇ Code Enforcement

The Clerical Unit

processes many Permits for Stanislaus County residents and businesses, including:

- ◆ Well Permits
- ◆ Septic Permits
- ◆ Body Art Permits
- ◆ Underground Storage Tank Permits
- ◆ Milk & Dairy Grade A Permits
- ◆ Mobile Food Facilities Permits
- ◆ Cottage Food permits



In **2017**, Clerical Staff processed, tracked and recorded approximately:

3,300 Complaints and
16,800 Phone Calls



Human Resources is staffed by one Manager, and partially utilizes five Confidential Assistants for recruiting efforts that support 13 uniquely different divisions within DER and Parks & Recreation with multiple/various program responsibilities. Year-round recruitment efforts keep the staff consistently busy with screening applications, coordinating interviews, pre-employment background processes, onboarding of new hires, evaluation tracking, processing a variety of routine/required HR documentation, and completing and routing Personnel Action Forms for annual evaluations, promotions, separations, etc.



Human Resources is committed to recruiting, screening, and hiring the highest quality candidates. Applicants for Environmental Resources and Parks & Recreation must pass a pre-employment background process.

- Recruitments and Onboarding
- Pre-employment Background Process
- Personnel
- Personnel Action Forms (PAFS)
- Benefits Management
- HR Investigations
- Discipline
- ADA/Civil Rights Complaints
- Interactive Process and Medical Work Restriction Agreements
- Leaves of Absences
- EEO & ADA Compliance
- Required Trainings Compliance
- Records
- County/Department Policies & Procedures Compliance

2017 Stats:

Applications	711
Recruitments	26
Hired (FT & PT)	73
Promoted	12
Volunteers	15

Note: The HR statistics and information provided in this DER Annual Report also include the Parks & Recreation shared functions and efforts in Personnel and Recruitments.

The Human Resources staff strive to provide the department with skilled, knowledgeable, ethical, and capable personnel. Careful recruitment efforts and screening helps build and strengthen the department from the newest hire to our most senior staff member to ensure excellent/quality services are provided to our customers. Retention of employees, our most valuable resource, and succession planning is vital to the longevity of an organization. Succession planning helps identify future leaders and ensures key positions remain filled with competent performers while also saving time and money by promoting from within and avoiding time consuming, costly external recruitments.

Service & Safety Statistics

2017

184
EMPLOYEES

11
OVER 25
YEARS

SERVICE YEAR MILESTONES

0-4 YEARS

EMPLOYEES:

110

60%

5-9 YEARS

EMPLOYEES:

10

5%

10-14 YEARS

EMPLOYEES:

23

12.5%

15-19 YEARS

EMPLOYEES:

23

12.5%

20-24 YEARS

EMPLOYEES:

5

3%

25+ YEARS

EMPLOYEES:

13

7%

Did You Know?

In 2017 there were
36 separations of
employment
and
4 retirements

YEARS BY CLASSIFICATION STATS RECAP

65%

of Staff were hired in
the last 9 years.

25%

of Staff have been
with the county
between 10 & 19
years

10%

of Staff have been
with the county more
than 20 years.

1,263

Combined years of
service as of
December 2017

Safety Stats

166

Active Drivers

92%

Driver Training
Compliance

89%

Ergonomic Training
Compliance

88%

HazCom Training
Compliance

57

First Aid CPR and
AED Trained

71

Bloodborne
Pathogens Trained

30 Years of Service



Jay Martinez
Lillie Farriester
Randy Brooks



DER IN THE NEWS & ON THE WEB

2017

Willy Recycle added 3 new photos.
January 9, 2017 · 🌐

Our 2017 Stanislaus County Recycling Awareness Calendars are here! The first 25 people to like & follow Willy's page will get a free calendar! If you already follow Willy and would like a calendar, message us and let us know!



Willy Recycle is at Westport Elementary.
February 1, 2017 · 🌐

Ms. Ortiz's kindergarten class from Westport Elementary right after our Recycling and Stormwater presentation. Here they are captured in mid-declaration to RECYCLE!



Willy Recycle
February 22, 2017 · 🌐

This Friday & Saturday from 8:00 am - 12:00 pm (February 24th & 25th) the Stanislaus County Hazardous Waste Division will hold a mobile event in Patterson at the Patterson Aquatic Center (1025 W. Las Palmas Avenue).



Check out the new facility video!



Stanislaus County DER
(209) 525-6700

89 Views

Like Comment Share

Willy Recycle
July 27, 2017 · 🌐

This year for the July Filter Exchange Event Stanislaus County recycled 683 used oil filters! Thank you to all the residents that participated and helped to keep our planet clean!

Willy Recycle
April 20, 2017 · 🌐

Stop by and celebrate Earth Day with Willy's crew this Saturday April 19th at Graceland Park! Spin the wheel, answer a couple of questions related to the 3Rs, and win a prize! We'll be there from 10 am - 4 pm.



Willy Recycle
September 25, 2017 · 🌐

It's time to clean out those files and dispose of all that paper! Take advantage of our FREE Shredding event taking place at all of the locations on the flyer! Hope to see you there!!

FREE

PAPER SHREDDING

SATURDAY, October 14, 2017
8am-12pm (or until full)

SHREDDING LOCATIONS:

Denair High School
3431 Lester Rd.
Salida Library
4835 Sisk Rd.

PROGRAM GUIDELINES:

- NO Businesses
- Up to 3 bags/boxes ONLY
- NO Binders
- NO Plastic

City of Newman
City Corporation Yard
712 Fresno St.
**City residents ONLY*

City of Turlock
Water Quality Control
901 S. Walnut Ave.
**City residents ONLY*

For more information contact:
Janice McClendon, 209-525-4778
Program brought to you by the Dept. of Environmental Resources

REDUCE • REUSE • RECYCLE

When and Where to Dispose Household Hazardous Waste

Only Run Down the Drain

TEMPORARY EVENTS

Location	Event Dates	Hours
Denair High School	August 11-12, 2017	8:00 AM - 12:00 PM
Salida Library	September 25, 2017	8:00 AM - 12:00 PM
City of Newman	October 14, 2017	8:00 AM - 12:00 PM
City of Turlock	October 14, 2017	8:00 AM - 12:00 PM

NO Electronic or Light Bulbs accepted at:

Facebook 2017

Willy Recycle added 18 new photos from April 22, 2017 to the album: Earth Day 2017 — at Graceland Park.
April 22, 2017 · 🌐



Earth Day 2017
18 Photos

Willy Recycle is at Stanislaus County Household Hazardous Waste Facility.
May 11, 2017 · 🌐

Our Hazardous Waste Facility @ 1710 Morgan Rd in Modesto can help you get in tune with summer! The Reuse Room is open on the 3rd Saturday of each month from 8a - 12p and hand out freebies such as cleaning products, pool supplies, yard products, and more.



BRING IN A USED OIL FILTER ON JULY 14, 15 AND 16TH

AND GET A NEW ONE OF EQUAL VALUE - FREE!

Offer good at participating O'Reilly and AutoZone auto parts stores. For details call 577-5493

***Conditions:**

- Limit one filter per person per event
- Maximum filter value cannot exceed \$12.99
- Passenger vehicle and light truck filters only
- Individuals only, no businesses may participate
- Replacement oil filters shall be "off the shelf" and of standard quality
- Replacement filters are limited to stock on-hand, no special orders
- No premium oil filters will be issued
- Filters may not be returned for refund and may only be exchanged for another oil filter

Willy Recycle added 2 new photos.
November 11, 2017 · 🌐

Come by the Salmon Festival in Knights Ferry and stop by our booth for a chance to spin the wheel and win a fabulous prize!!



Willy Recycle added 4 new photos.
November 11, 2017 · 🌐

Visitors spinning the wheel and answering trivia questions for a prize. We'll be here until 3pm!



Willy Recycle
October 17, 2017 · 🌐

One more week to donate gently used baby clothes. Below is a location near you.

2nd Chance Week

October 9-23, 2017

Donate new or gently used baby clothes!

All clothes collected will be donated to:

Diaper for Human Services
Modesto Pregnancy Center
Baptist Army
Old Lady
Modesto Gospel Mission

Look for donation bins at Thrift Stores, Food Banks, and other locations.

Liberators

- 1000 E. St., Modesto
- 1800 N. St., Modesto
- 4800 Main St., Modesto
- 4800 Main St., Modesto
- 4800 Main St., Modesto
- 4800 Main St., Modesto
- 4800 Main St., Modesto
- 4800 Main St., Modesto
- 4800 Main St., Modesto
- 4800 Main St., Modesto

State Theatre of Modesto

- 1207 S. Street, Modesto

Willy Recycle
November 15, 2017 · 🌐

Don't have any plans today, need something to do tonight? Check out "A Plastic Ocean" playing at the State Theater!

IN HONOR OF AMERICA RECYCLES DAY

THE CITY OF MODesto STANISLAUS COUNTY PRESENTS

FREE ADMISSION

A PLASTIC OCEAN

8 MILLION TONS OF PLASTIC ARE DUMPED INTO OUR OCEANS EVERY YEAR... WE NEED A WAVE OF CHANGE

WEDNESDAY, NOVEMBER 15TH AT 10:30AM AND 6:00PM

STATE THEATRE
1307 J ST., DOWNTOWN MODesto

FOOD, BEVERAGES, EXPRESSO DRINKS AND REVENUES AVAILABLE FOR PURCHASE. PLEASE CALL AHEAD TO MAKE RESERVATIONS FOR LARGE GROUPS

Willy Recycle
March 21, 2017 · 🌐

The Waste Tire Recycling program will help you recycle up to 9 tires! See the information below. Call 525-6791 for your free voucher today! This will be going on from April 1st through April 15, 2017.

Stanislaus County Unincorporated Residents Waste Tire Recycling Voucher Program

April 1st - April 15th, 2017

Nine (9) car or pickup truck tires accepted at no charge with voucher

Recycle up to 9 Waste Tires. Free tire disposal with a Voucher!

How to get a Voucher? Call 525-6791 or come to the Department of Environmental Resources at 3800 Cornerstone Way Suite C, Modesto

Take the voucher and waste tires to your garage hauler:

- Auto World (209) 525-2741
- California Disposal (209) 525-2741
- DeWitt Disposal (209) 525-2741
- Turlock Transfer (209) 525-2741

Program Requirements:

- Stanislaus County Unincorporated Residents Only i.e., Groves Landing, Denair, Grayson, Empire, Hickman, Keyes, Knights Ferry, La Grange, Salinas and Westley.
- Limited to 5 tires per voucher; one voucher per household
- No tires from businesses accepted
- ONLY passenger car or pickup truck tires will be accepted
- Tires with studs are okay
- Do not mix tires with other wastes
- Funded by a grant from CalRecycle