

SGMA Update

Stanislaus County Technical Advisory Meeting



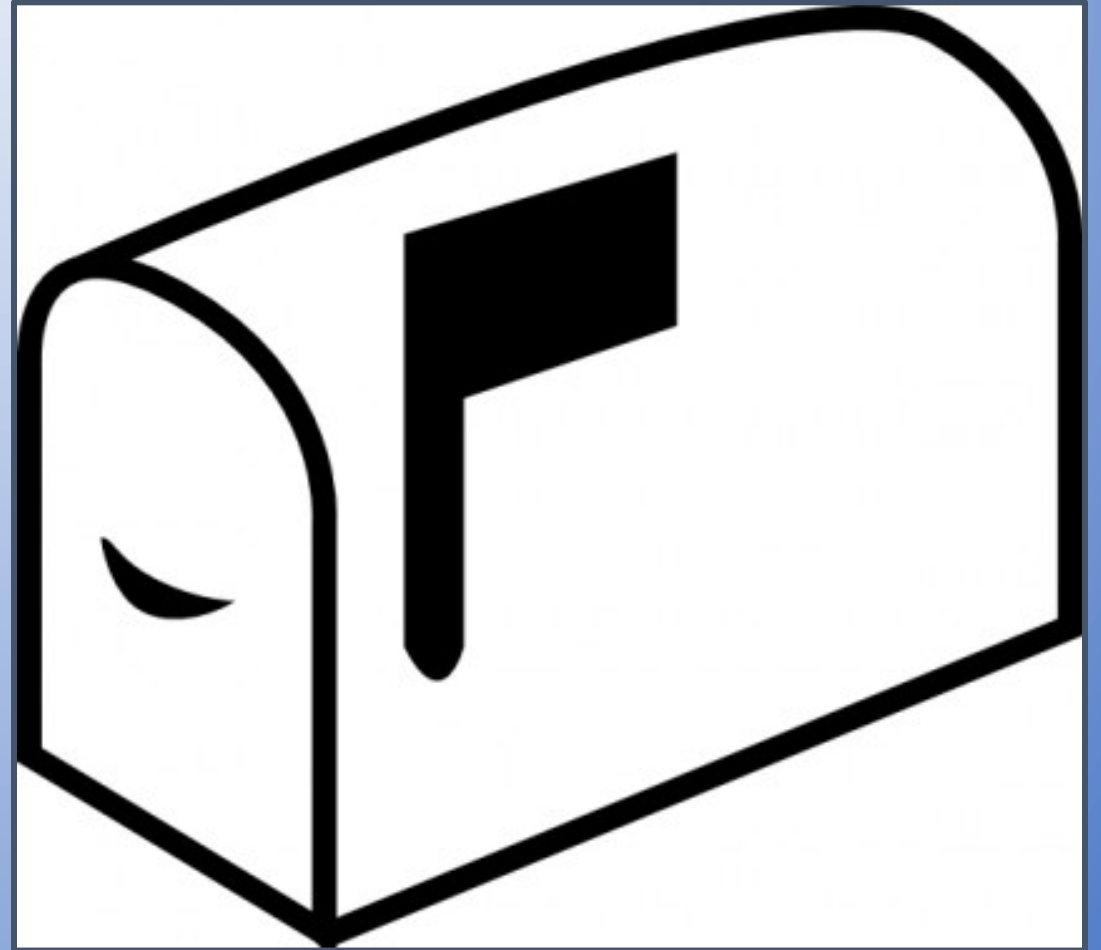
Department of Water Resources
South Central Region Office
March 10, 2016

GSP Public Meeting Schedule

<i>Public Meeting Schedule</i>		
Monday, March 21, 2016 VISALIA 4:00 P.M. to 6:00 P.M. Visalia Convention Center 303 E Acequia Avenue, Visalia	Tuesday, March 22, 2016 SANTA ANA 1:00 P.M. to 3:00 P.M. Delhi Community Center 505 E. Central Avenue, Santa Ana	Friday, March 25, 2016 SACRAMENTO 9:00 A.M. to 11:00 A.M. Secretary of State Building 1500 11th Street, Sacramento
Thursday, March 24, 2016 ONLINE WEBINAR 1:00 P.M. to 3:00 P.M. Please register for the webinar at: https://attendee.gotowebinar.com/register/2515354223176908292 After registering, you will receive a confirmation email containing information about joining the webinar.		

Comment Period

- Public Review and Comment Period is from February 18, 2016 to March 25, 2016
- Comments must be received electronically or postmarked on or before March 25, 2016



How to Submit Comments

1. Via comment card at public meetings
2. Email to SGMPS@water.ca.gov labeled “Subject: Draft GSP Emergency Regulations Public Comment”
3. Mail to:

California Department of Water Resources

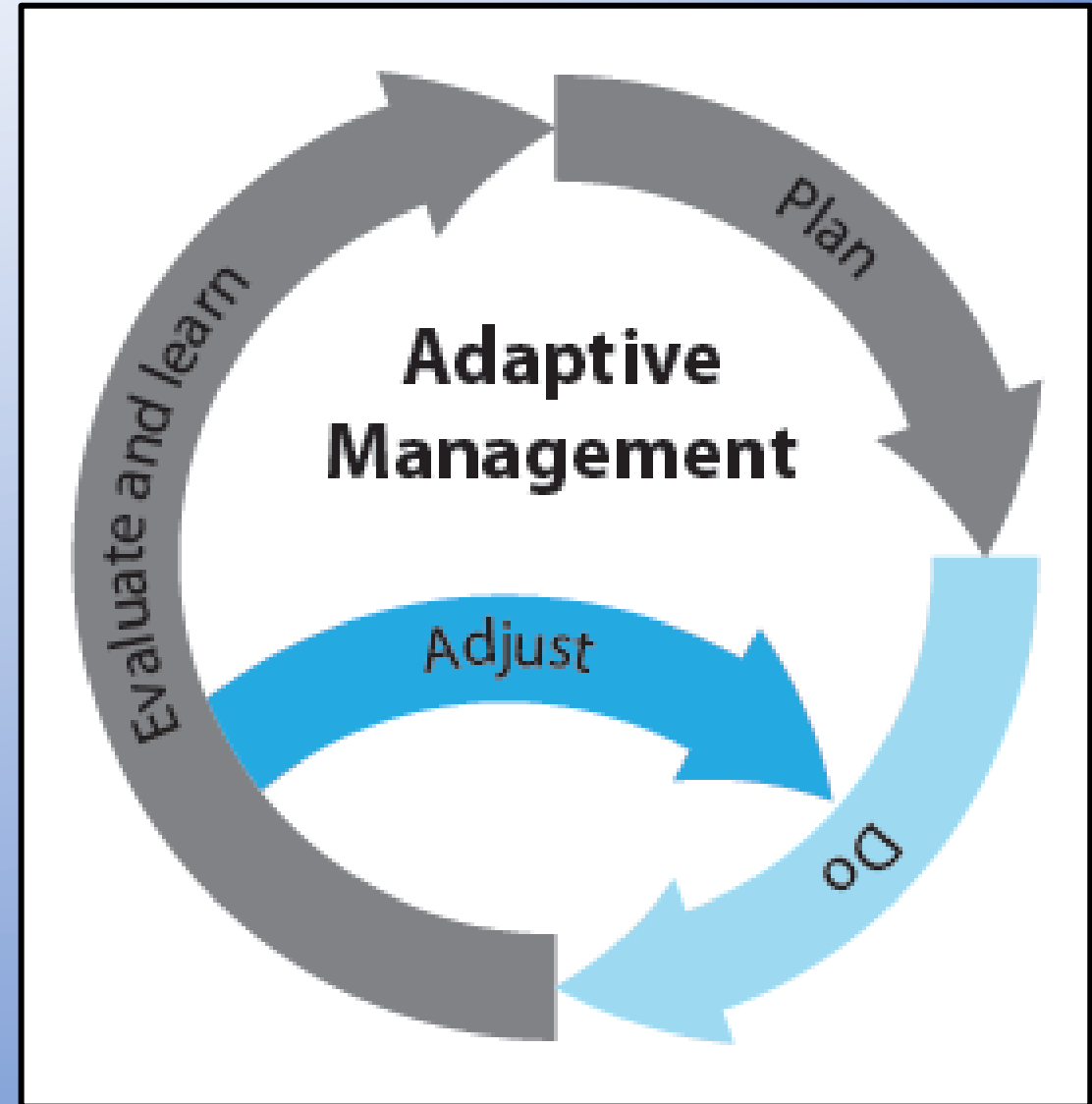
Attn: Lauren Bisnett, Public Affairs Office

P.O. Box 942836

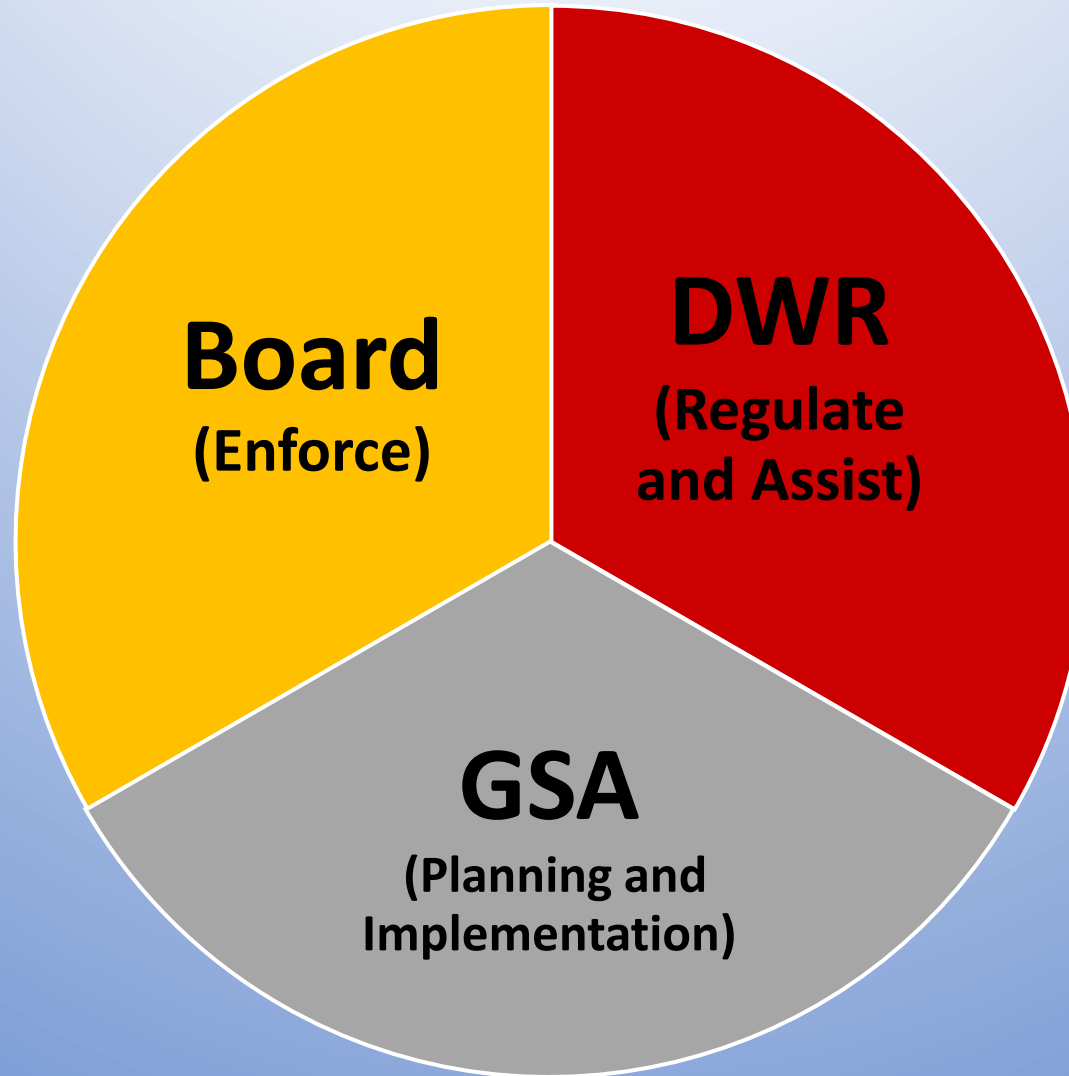
Sacramento, California 94236

General Principals (Article 1)

- Must achieve sustainability goal for an entire basin in 20 years
- Cannot adversely affect an adjacent basin
- Meet a substantial compliance standard
- Provide a description of basin-wide governance
- Establish timeline and priority for filling data gaps
- Implement an adaptive management process (as necessary)



General Roles and Responsibilities



Phases of GSP Development and Implementation



Phase 1
GSA Formation
and Coordination



Phase 2
GSP Preparation
and Submission



Phase 3
GSP Review
and Evaluation

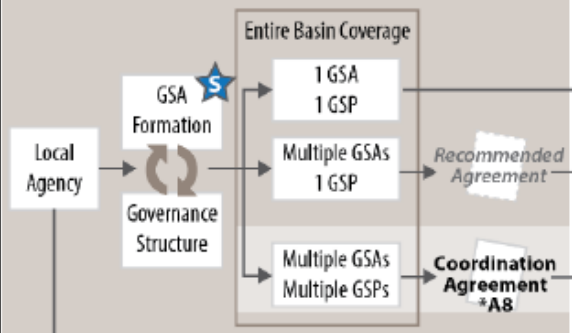


Phase 4
Implementation
and Reporting



Phase 1

GSA Formation and Coordination



Alternative: Local agencies may choose to submit an Alternative (see Article 9 for Alternatives)

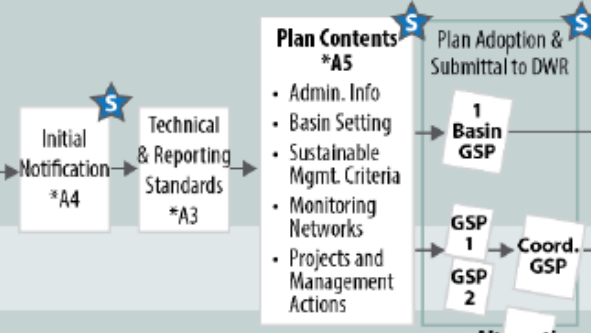
Phase 1 References (GSP Emergency Regulations)

Article 8. Coordination Agreements

- Interbasin Agreements (§357.2)
- Intra-basin Agreements (§357.4)

Phase 2

GSP Preparation and Submission



Phase 2 References (GSP Emergency Regulations)

Article 3. Technical and Reporting Standards

- Best Management Practices (§352.4)
- Data and Reporting Standards (§352.6)
- Data Management and Recordkeeping (§352.8)

Article 4. Procedures

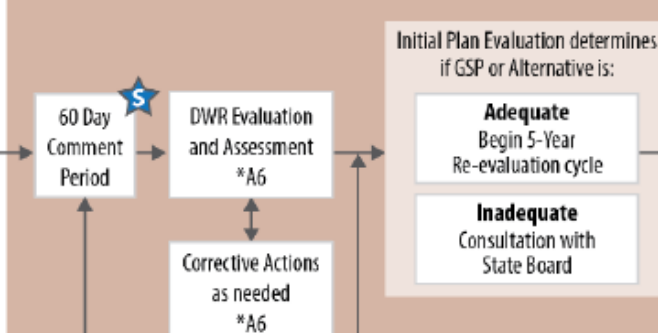
- Information Provided by the Department (§353.2)
- Reporting Provisions (§353.4)
- Initial Notification (§353.6)
- Public Comment (§353.8)
- Withdrawal or Amendment of Plan (§353.10)

Article 5. Plan Contents

- Subarticle 1. Administrative Information
- Subarticle 2. Basin Setting
- Subarticle 3. Sustainable Management Criteria
- Subarticle 4. Monitoring Networks
- Subarticle 5. Projects and Management Actions

Phase 3

GSP Review and Evaluation



Phase 3 References (GSP Emergency Regulations)

Article 1. Introductory Provisions

Article 2. Definitions

Article 3. Technical and Reporting Standards

- Best Management Practices (§352.4)
- Data and Reporting Standards (§352.6)
- Data Management and Recordkeeping (§352.8)

Article 6. Evaluation and Assessment

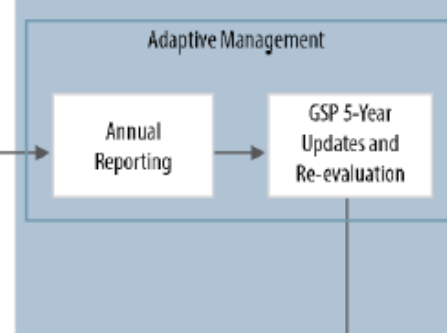
- Department Review of Initial Adopted Plan (§355.2)
- Criteria for Plan Evaluation (§355.4)
- Periodic Review of Plan by Department (§355.6)
- Consultation with Board (§355.8)
- Resolution of Conflicts by Department (§355.10)

Article 9. Alternatives and Adjudicated Areas

- Adjudicated Areas (§358.2)
- Alternatives to Groundwater Sustainability Plans (§358.4)
- Department Evaluation of Plan Alternatives (§358.6)

Phase 4

Implementation and Reporting



Phase 4 References (GSP Emergency Regulations)

Article 7. Reports, Assessments, and Amendments

Subarticle 1. Annual Reports

- Annual Report (§356.4)
- Department Review of Annual Reports (§356.6)

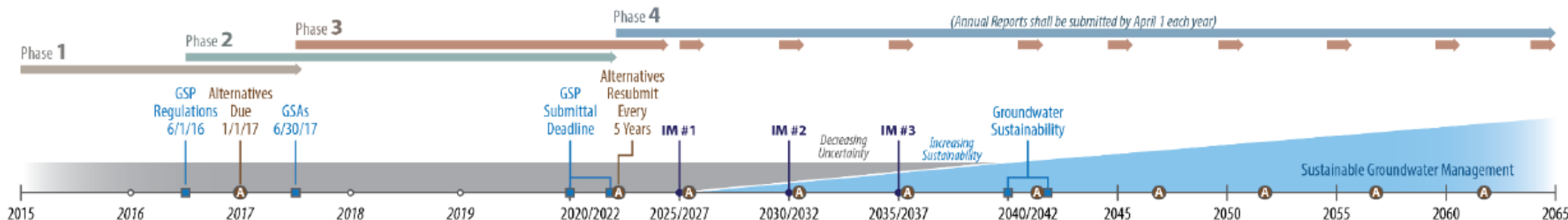
Subarticle 2. Periodic Evaluation of Plan

- Agency Evaluation and Assessment (§356.10)

Subarticle 3. Plan Amendments

- Amendments and Modifications to Plan (§356.12)

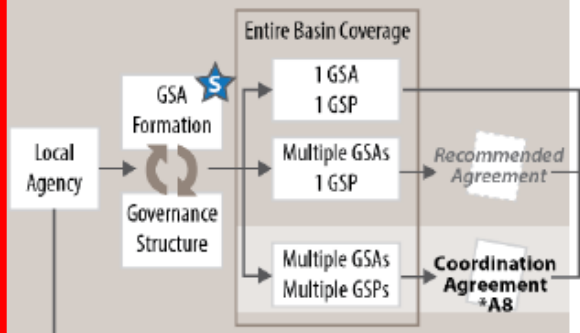
Sustainable Groundwater Management Planning and Implementation Horizon



= Stakeholder input opportunity *A(##) = Article Reference

Phase 1

GSA Formation and Coordination



Alternative: Local agencies may choose to submit an Alternative (see Article 9 for Alternatives)

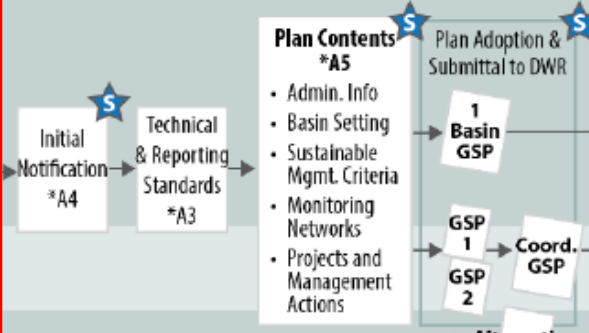
Phase 1 References (GSP Emergency Regulations)

Article 8. Coordination Agreements

- Interbasin Agreements (§357.2)
- Intra-basin Agreements (§357.4)

Phase 2

GSP Preparation and Submission



Alternative: Local agencies may choose to submit an Alternative (see Article 9 for Alternatives)

Phase 2 References (GSP Emergency Regulations)

Article 3. Technical and Reporting Standards

- Best Management Practices (§352.4)
- Data and Reporting Standards (§352.6)
- Data Management and Recordkeeping (§352.8)

Article 4. Procedures

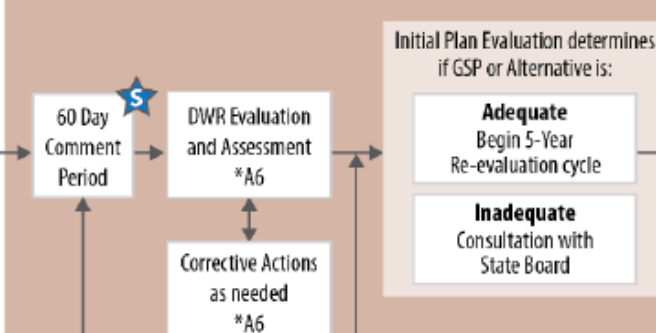
- Information Provided by the Department (§353.2)
- Reporting Provisions (§353.4)
- Initial Notification (§353.6)
- Public Comment (§353.8)
- Withdrawal or Amendment of Plan (§353.10)

Article 5. Plan Contents

- Subarticle 1. Administrative Information
- Subarticle 2. Basin Setting
- Subarticle 3. Sustainable Management Criteria
- Subarticle 4. Monitoring Networks
- Subarticle 5. Projects and Management Actions

Phase 3

GSP Review and Evaluation



Phase 3 References (GSP Emergency Regulations)

Article 1. Introductory Provisions

Article 2. Definitions

Article 3. Technical and Reporting Standards

- Best Management Practices (§352.4)
- Data and Reporting Standards (§352.6)
- Data Management and Recordkeeping (§352.8)

Article 6. Evaluation and Assessment

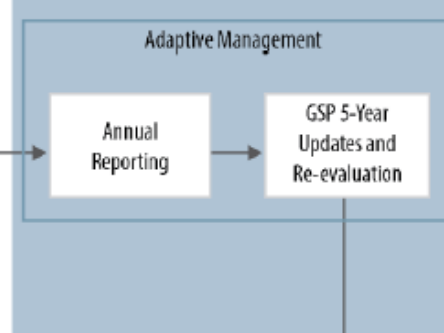
- Department Review of Initial Adopted Plan (§355.2)
- Criteria for Plan Evaluation (§355.4)
- Periodic Review of Plan by Department (§355.6)
- Consultation with Board (§355.8)
- Resolution of Conflicts by Department (§355.10)

Article 9. Alternatives and Adjudicated Areas

- Adjudicated Areas (§358.2)
- Alternatives to Groundwater Sustainability Plans (§358.4)
- Department Evaluation of Plan Alternatives (§358.6)

Phase 4

Implementation and Reporting



Phase 4 References (GSP Emergency Regulations)

Article 7. Reports, Assessments, and Amendments

Subarticle 1. Annual Reports

- Annual Report (§356.4)
- Department Review of Annual Reports (§356.6)

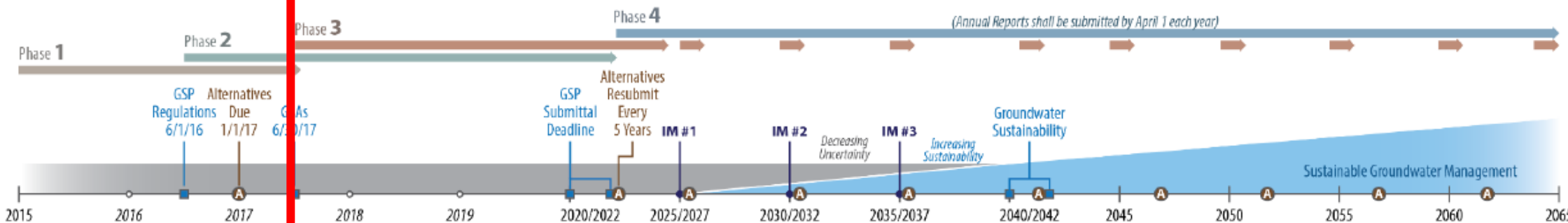
Subarticle 2. Periodic Evaluation of Plan

- Agency Evaluation and Assessment (§356.10)

Subarticle 3. Plan Amendments

- Amendments and Modifications to Plan (§356.12)

Sustainable Groundwater Management Planning and Implementation Horizon



Phase 1 Overview

1. Realignment of basin boundaries according to approved basin boundary modification requests

- Five initial notifications submitted in Stanislaus County.
- All notifications involve the Delta-Mendota Subbasin

2. Establishment of basin governance through the formation of GSAs

- West Stanislaus Irrigation District – Exclusive on 05/25/2016
- San Joaquin River Exchange Contractors Water Authority – Exclusive on 03/28/2016
- South San Joaquin Irrigation District - Overlap

Phase 1 References *(Draft GSP Regulations)*

Article 8. Coordination Agreements

- Interbasin Agreements (§357.2)
- Intrabasin Agreements (§357.4)

GSA Considerations

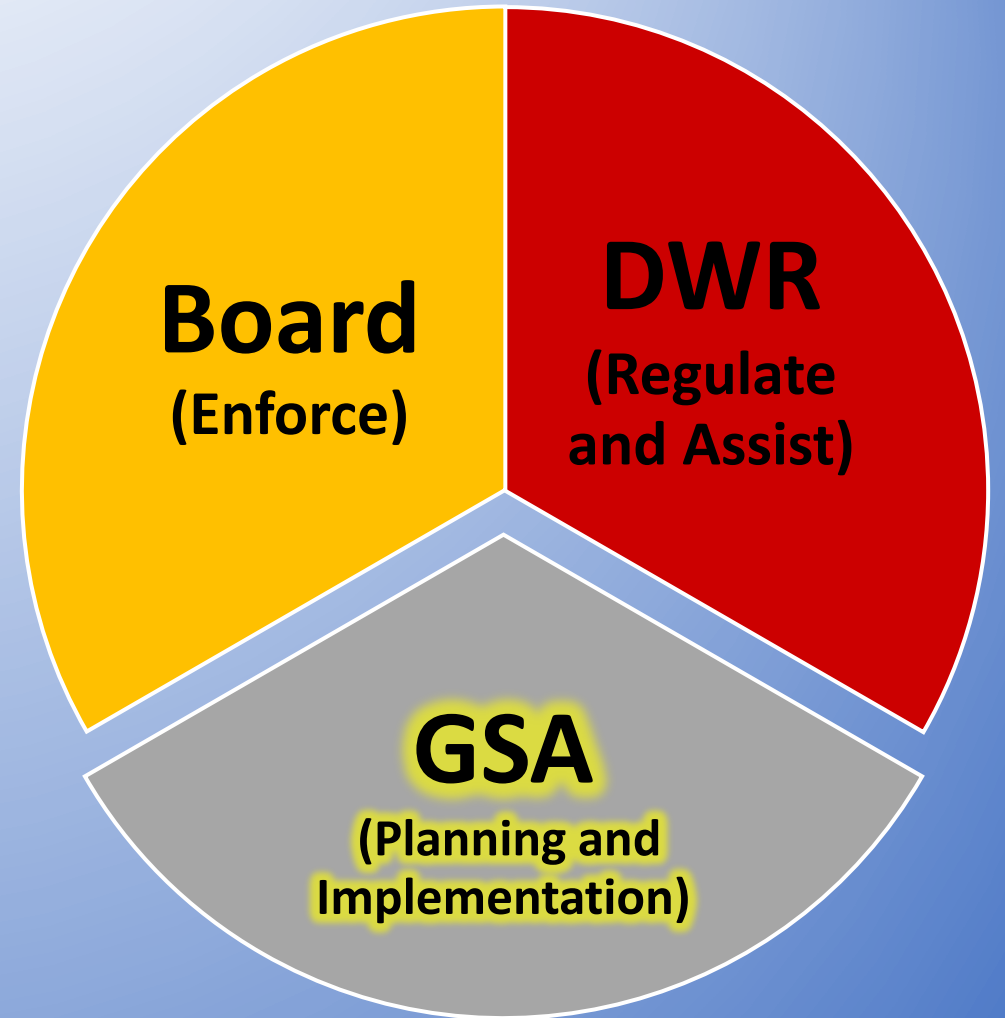
1. Establish the existing basin boundary and determine if the submittal of a boundary modification request is required

- Requests are due by March 31, 2016. Potential for future basin boundary modification windows.

2. Coordinate with other agencies within a basin and establish GSAs

- Entire basin must be covered by GSAs by June 30, 2017

3. Establish coordination agreements where required or voluntary agreements where desired

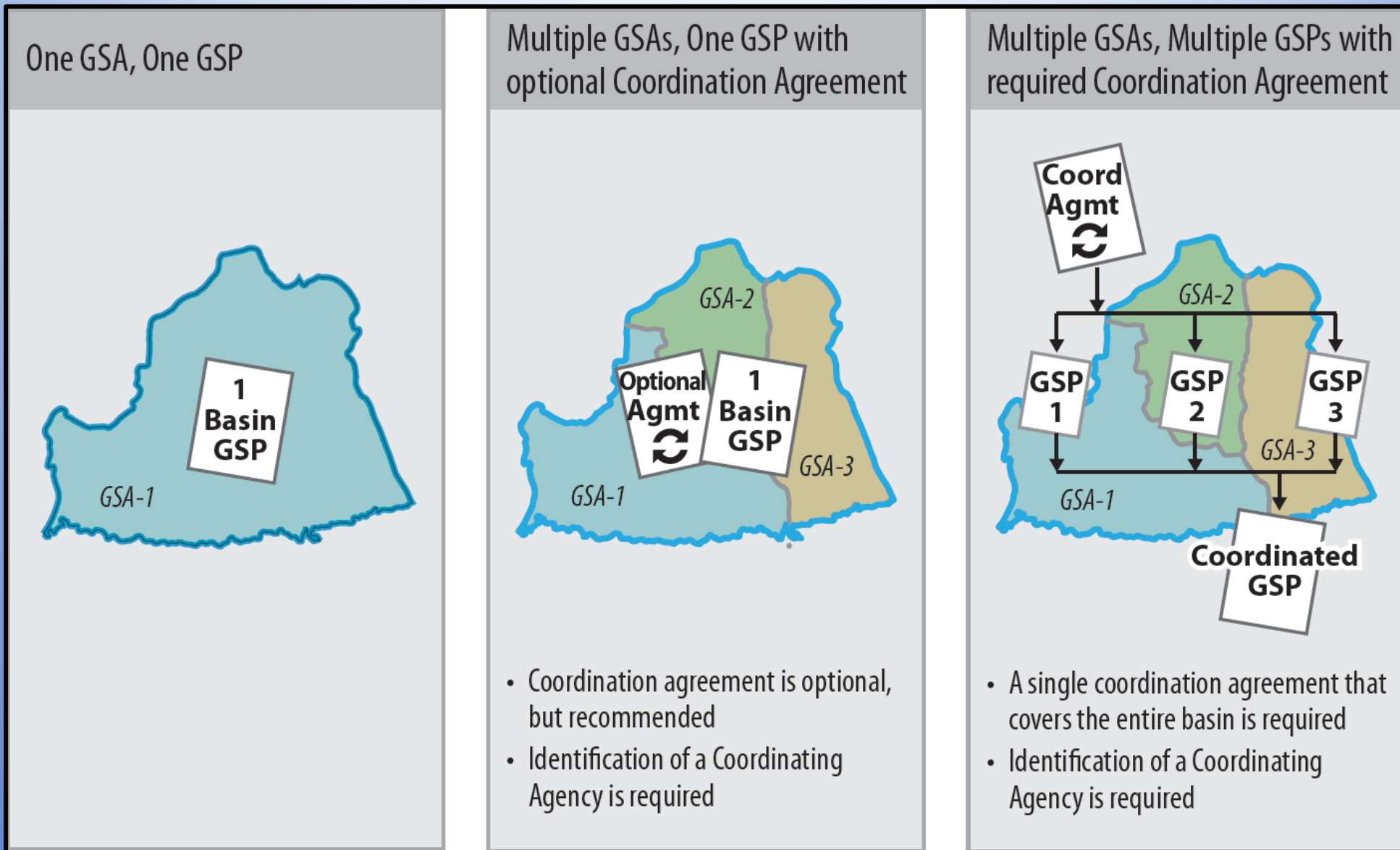


DWR's Role During Phase 1

1. Prepare final GSP regulations
2. Provide facilitation services to local agencies involved in GSA formation
3. Review submitted basin boundary modification requests and update Bulletin 118 with approved basin boundary modifications
4. Review GSA formation submittals for completeness as required by SB 13

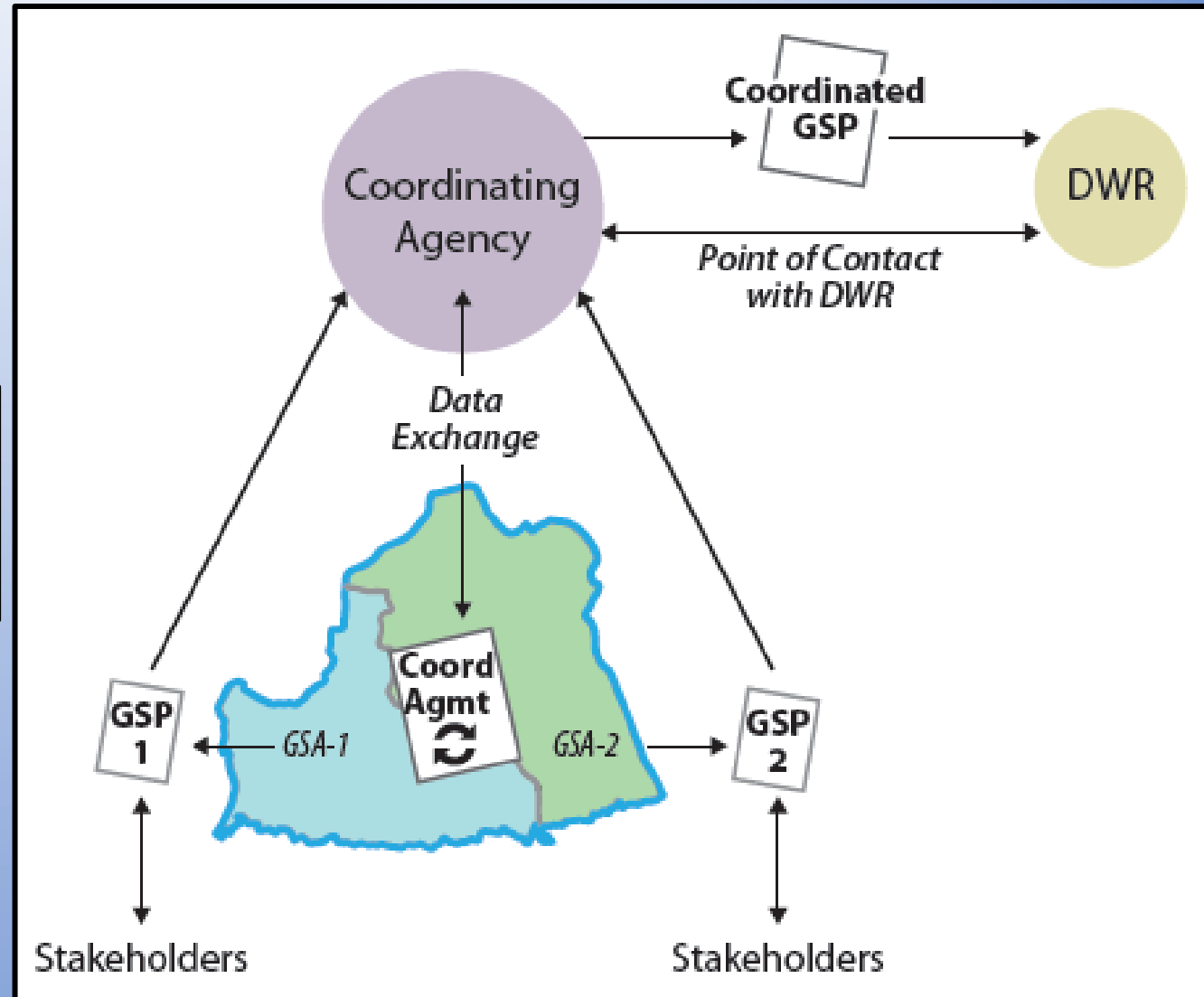


GSA Formation and Governance Structure



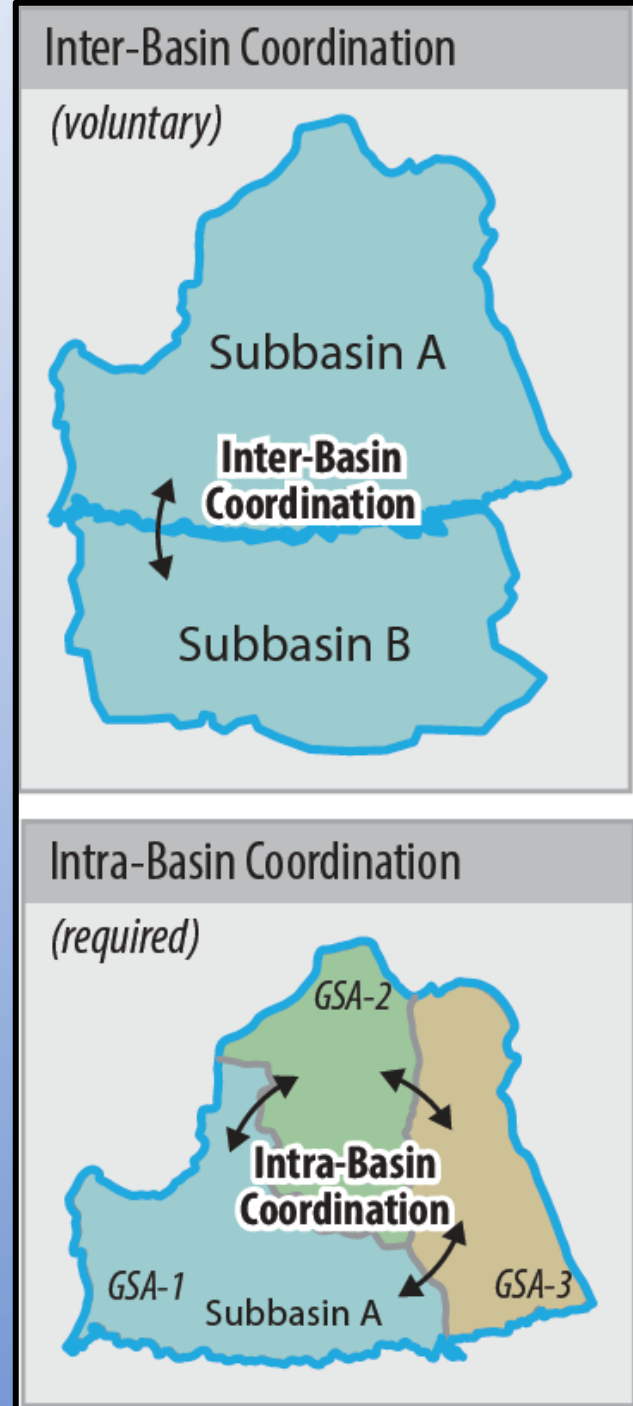
Coordinated GSPs and Coordinating Agencies

When there are multiple GSAs and multiple GSPs in a basin, a Coordinating Agency acts as the sole point of contact with DWR and compiles the individual GSPs into a Coordinated GSP and submits to DWR.



Coordination Agreements (Article 8)

1. **Inter-Basin Coordination:** Voluntary coordination between two or more basins that are hydraulically connected
2. **Intra-Basin Coordination:** Required coordination for basins with multiple GSPs and recommended for basins with multiple GSAs preparing a Single GSP

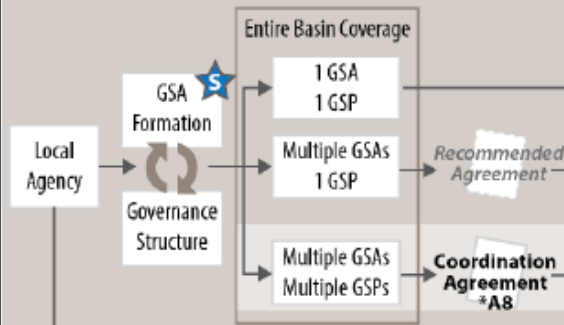


Phase 1 Key Dates

1. Basin Boundary Modifications due – March 31, 2016
2. GSP Emergency Regulations adopted – June 1, 2016
3. Alternative to GSPs due – January 1, 2016
4. GSAs covering an entire basin formed – June 30, 2017

Phase 1

GSA Formation and Coordination



Alternative: Local agencies may choose to submit an Alternative (see Article 9 for Alternatives)

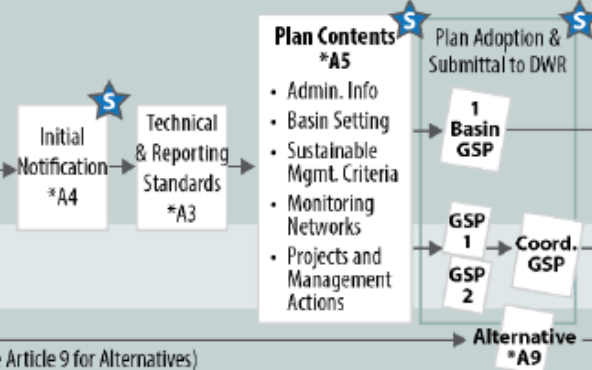
Phase 1 References (GSP Emergency Regulations)

Article 8. Coordination Agreements

- Interbasin Agreements (§357.2)
- Intra-basin Agreements (§357.4)

Phase 2

GSP Preparation and Submission



Phase 2 References (GSP Emergency Regulations)

Article 3. Technical and Reporting Standards

- Best Management Practices (§352.4)
- Data and Reporting Standards (§352.6)
- Data Management and Recordkeeping (§352.8)

Article 4. Procedures

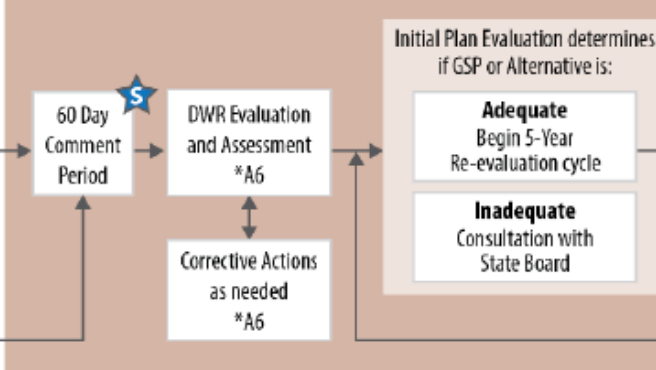
- Information Provided by the Department (§353.2)
- Reporting Provisions (§353.4)
- Initial Notification (§353.6)
- Public Comment (§353.8)
- Withdrawal or Amendment of Plan (§353.10)

Article 5. Plan Contents

- Subarticle 1. Administrative Information
- Subarticle 2. Basin Setting
- Subarticle 3. Sustainable Management Criteria
- Subarticle 4. Monitoring Networks
- Subarticle 5. Projects and Management Actions

Phase 3

GSP Review and Evaluation



Phase 3 References (GSP Emergency Regulations)

Article 1. Introductory Provisions

Article 2. Definitions

Article 3. Technical and Reporting Standards

- Best Management Practices (§352.4)
- Data and Reporting Standards (§352.6)
- Data Management and Recordkeeping (§352.8)

Article 6. Evaluation and Assessment

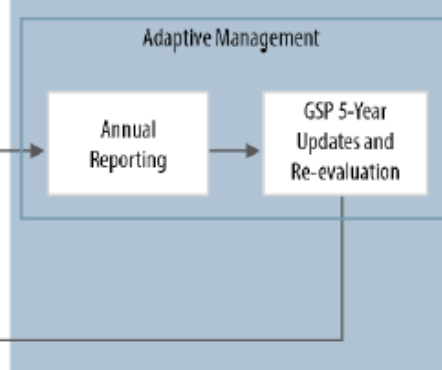
- Department Review of Initial Adopted Plan (§355.2)
- Criteria for Plan Evaluation (§355.4)
- Periodic Review of Plan by Department (§355.6)
- Consultation with Board (§355.8)
- Resolution of Conflicts by Department (§355.10)

Article 9. Alternatives and Adjudicated Areas

- Adjudicated Areas (§358.2)
- Alternatives to Groundwater Sustainability Plans (§358.4)
- Department Evaluation of Plan Alternatives (§358.6)

Phase 4

Implementation and Reporting



Phase 4 References (GSP Emergency Regulations)

Article 7. Reports, Assessments, and Amendments

Subarticle 1. Annual Reports

- Annual Report (§356.4)
- Department Review of Annual Reports (§356.6)

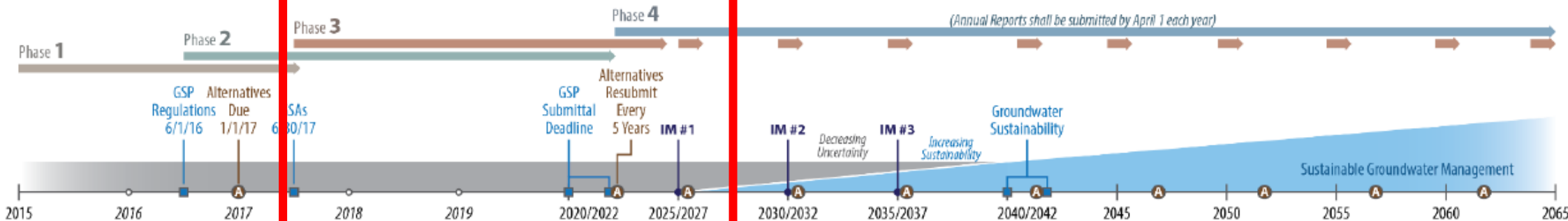
Subarticle 2. Periodic Evaluation of Plan

- Agency Evaluation and Assessment (§356.10)

Subarticle 3. Plan Amendments

- Amendments and Modifications to Plan (§356.12)

Sustainable Groundwater Management Planning and Implementation Horizon



= Stakeholder input opportunity *A(##) = Article Reference

Phase 2 Overview

1. Development and adoption of GSPs submitted by GSAs
2. Locally-driven phase with all activities required to be completed in adherence to the statutory milestones required by SGMA

Phase 2 References *(Draft GSP Regulations)*

Article 3. Technical and Reporting Standards

- Best Management Practices (§352.4)
- Data and Reporting Standards (§352.6)
- Data Management and Recordkeeping (§352.8)

Article 4. Procedures

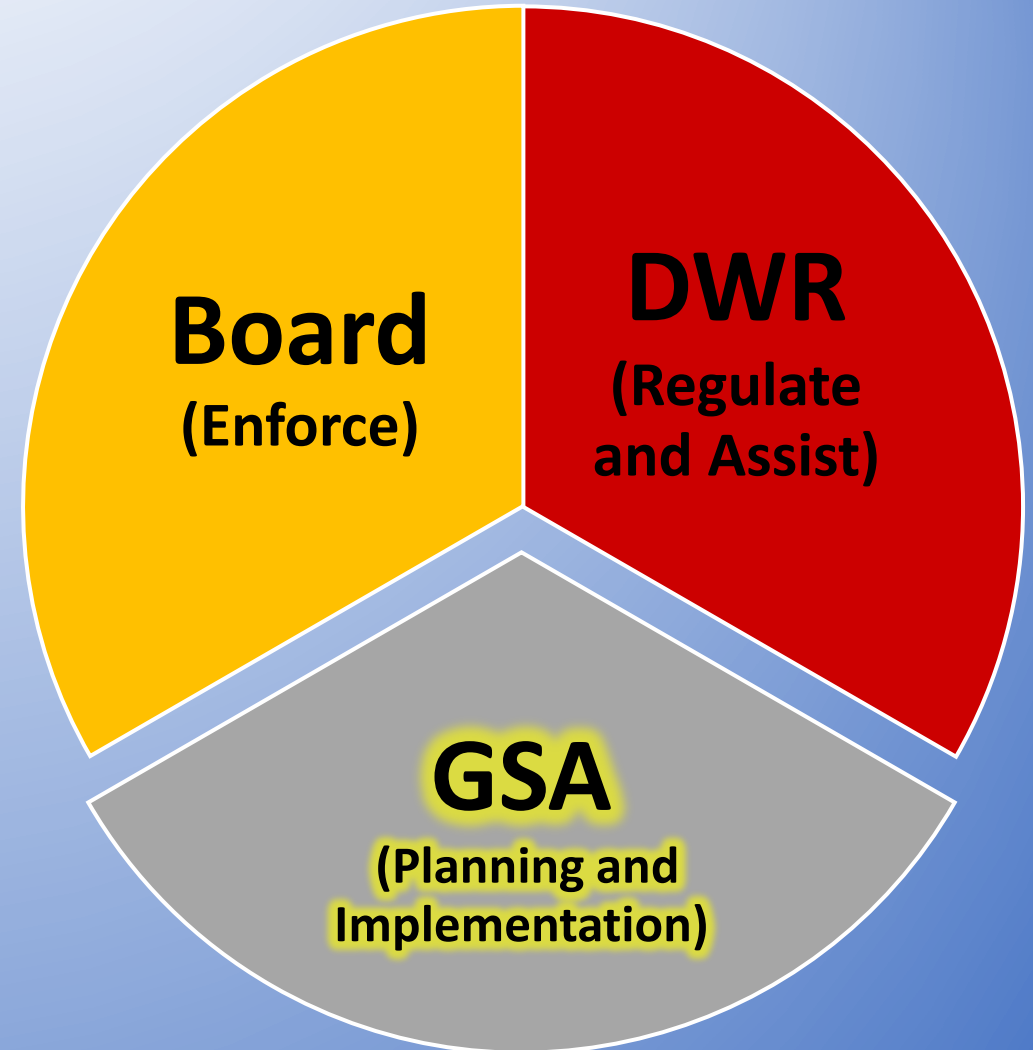
- Information Provided by the Department (§353.2)
- Reporting Provisions (§353.4)
- Initial Notification (§353.6)
- Public Comment (§353.8)
- Withdrawal or Amendment of Plan (§353.10)

Article 5. Plan Contents

- Subarticle 1. Administrative Information
- Subarticle 2. Basin Setting
- Subarticle 3. Sustainable Management Criteria
- Subarticle 4. Monitoring Networks
- Subarticle 5. Projects and Management Actions

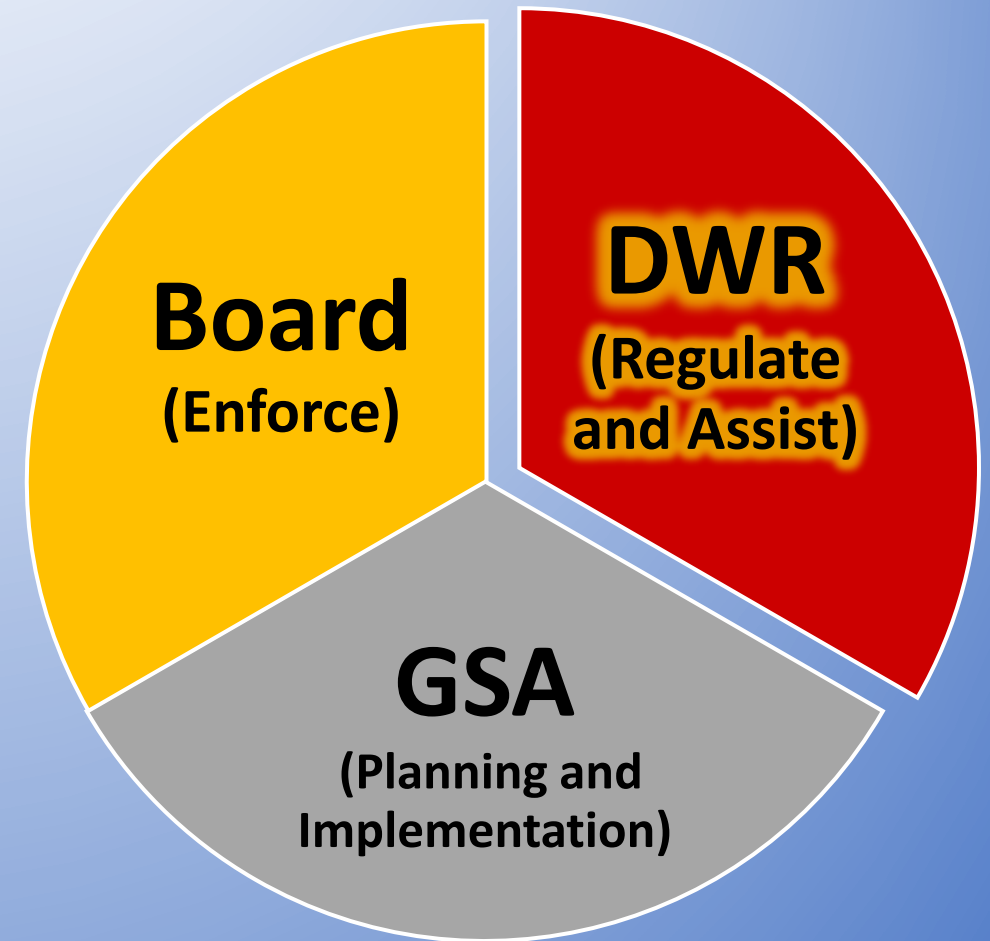
GSA Considerations

1. **GSA coordination with adjacent hydraulically connected basins should start now**
2. **Foundation for GSP development should begin now through:**
 - Thorough understanding of GSP regulations
 - Setting GSP expectations based on existing data or plans
 - Creation of a communication plan
3. **Land use agencies should begin to consider GSPs in their basin and coordinate with GSAs before amending or adopting general plans**



DWR's Role During Phase 2

1. Funding support - \$100M to support SGMA activities
2. Continued facilitation
3. Technical support with basin information and water budgets
4. Development of best management practices
5. Water supply available for replenishment
6. Bulletin 118 update
7. Consultation with GSAs



Key Definitions

Critical Parameters – Conditions related to chronic lowering of groundwater levels, reduction of groundwater storage, seawater intrusion, degraded water quality, land subsidence that substantially interferes with surface land use, and depletion of interconnected surface water, that if significant and unreasonable may cause the occurrence of undesirable results

Minimum Threshold – Refers to the point at which groundwater conditions for a given critical parameter are significant and unreasonable

Key Definitions

Measurable Objectives – Specific, quantifiable goals for the maintenance or improvement of specified groundwater conditions outlined in a GSP

Interim Milestone – Target value for management actions or measurable groundwater conditions set by an agency as part of their GSP implementation

Baseline Conditions – Historic information used to project future conditions for hydrology, water demand, and availability of surface water and to evaluate potential sustainable management practices of a basin

Preparing a “Basin Setting” for GSP’s (Article 5)

Static Conditions:

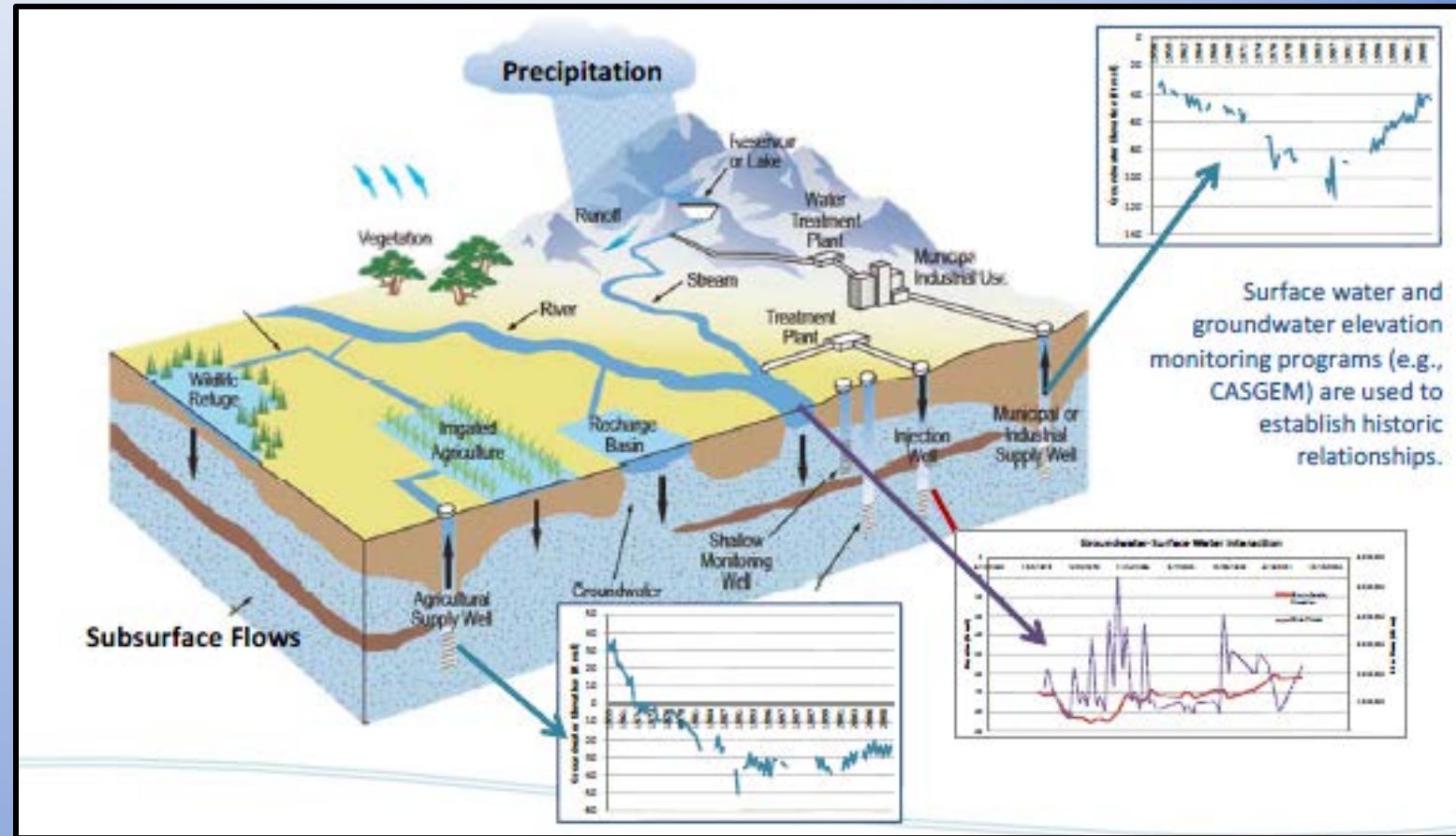
Hydrogeologic conceptual model that includes regional geology, principal aquifers and aquitards, cross-sections, and maps

Dynamic Conditions:

Description of historical and present day basin conditions related to undesirable results

Water Budget:

Quantitative description of groundwater and surface water inflows and outflows



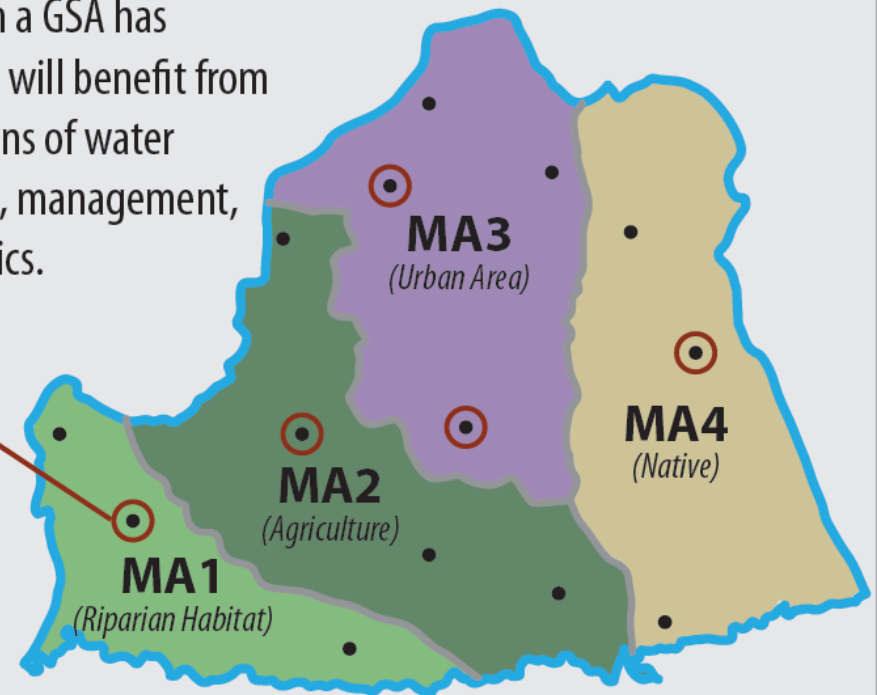
Management Areas (Article 5)

1. Areas where the presence of local conditions for one or more critical parameters differ from those of the basin at large
2. Measurable objectives, minimum thresholds, and undesirable results are established for Management Areas

Management Areas

Management Areas (shown as MA) are designated when a GSA has determined the area will benefit from site-specific conditions of water demand, use, source, management, or other characteristics.

Representative Wells are representative of the conditions in the area and are used to monitor for undesirable results.



Sustainable Management Criteria (Article 5)

- Establishment of minimum thresholds for each critical parameter to avoid undesirable results
- Identification of one or more measurable objectives for each critical parameter
- Establishment of interim milestones for every 5-year interval
- Assessment of a GSPs minimum thresholds and interim milestones are reported to DWR, adjustment of minimum thresholds if needed

Sustainability Goal

- Basin wide Goal
- Achieved by 2040/42

Sustainable Groundwater Management

- During Plan Implementation
- Avoid Undesirable Results

Sustainable Yield

- Basin wide Sustainable Yield
- Achieved by 2040/42
- Avoid Undesirable Results

Monitoring Networks (Article 5)

- Creation of a detailed basin-specific monitoring network
- GSP may incorporate data from other programs (CASGEM, etc.)
- Minimum standards and measurements of each applicable critical parameter required
- Monitoring density and frequency based on groundwater use, aquifer characteristics, impacts, and uncertainty
- Representative monitoring sites may be used
- Groundwater elevations may be used as a proxy for other critical parameters

Projects and Management Actions (Article 5)

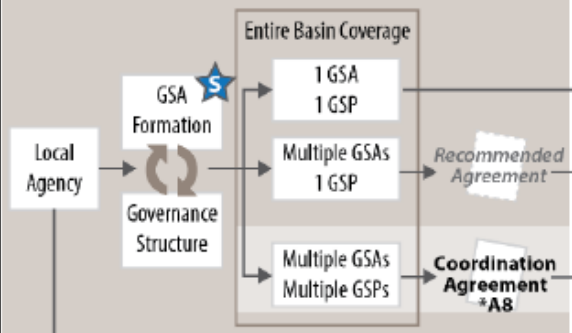
- Determination of projects and actions that will address groundwater problems and help achieve sustainability
- Design of projects and actions, that will allow measurable objectives to be met, is required during GSP development
- Should outline required permitting, implementation time-table, expected benefits, required legal authority, and estimated costs for implementation

Phase 2 Key Dates

1. GSP Regulations adopted – June 1, 2016
2. Alternative to GSPs due – January 1, 2017
3. GSAs covering an entire basin formed – June 30, 2017
4. GSPs submittal date – 2020/2022
5. First Alternative to GSPs due - 2022

Phase 1

GSA Formation and Coordination



Alternative: Local agencies may choose to submit an Alternative (see Article 9 for Alternatives)

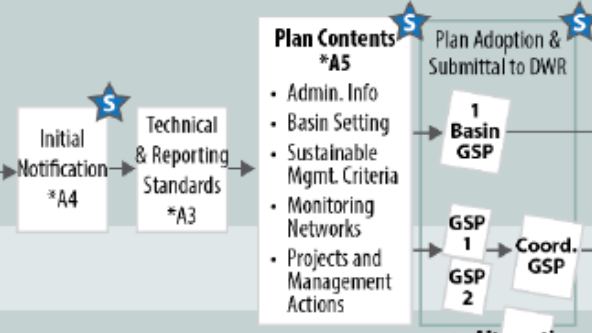
Phase 1 References (GSP Emergency Regulations)

Article 8. Coordination Agreements

- Interbasin Agreements (§357.2)
- Intrabasin Agreements (§357.4)

Phase 2

GSP Preparation and Submission



Phase 2 References (GSP Emergency Regulations)

Article 3. Technical and Reporting Standards

- Best Management Practices (§352.4)
- Data and Reporting Standards (§352.6)
- Data Management and Recordkeeping (§352.8)

Article 4. Procedures

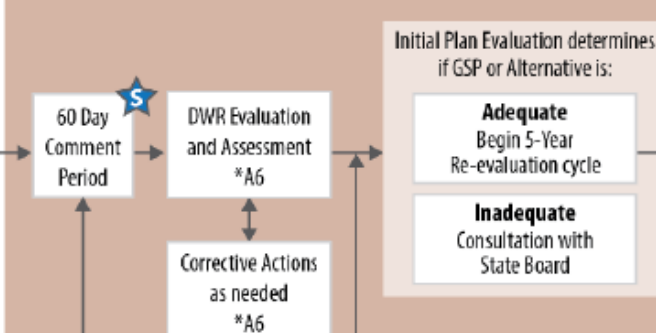
- Information Provided by the Department (§353.2)
- Reporting Provisions (§353.4)
- Initial Notification (§353.6)
- Public Comment (§353.8)
- Withdrawal or Amendment of Plan (§353.10)

Article 5. Plan Contents

- Subarticle 1. Administrative Information
- Subarticle 2. Basin Setting
- Subarticle 3. Sustainable Management Criteria
- Subarticle 4. Monitoring Networks
- Subarticle 5. Projects and Management Actions

Phase 3

GSP Review and Evaluation



Phase 3 References (GSP Emergency Regulations)

Article 1. Introductory Provisions

Article 2. Definitions

Article 3. Technical and Reporting Standards

- Best Management Practices (§352.4)
- Data and Reporting Standards (§352.6)
- Data Management and Recordkeeping (§352.8)

Article 6. Evaluation and Assessment

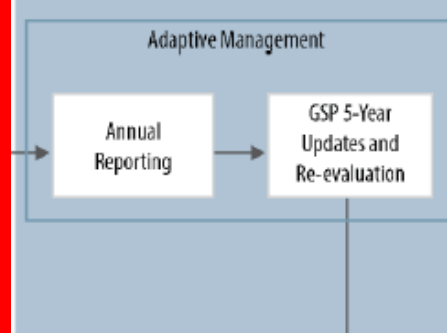
- Department Review of Initial Adopted Plan (§355.2)
- Criteria for Plan Evaluation (§355.4)
- Periodic Review of Plan by Department (§355.6)
- Consultation with Board (§355.8)
- Resolution of Conflicts by Department (§355.10)

Article 9. Alternatives and Adjudicated Areas

- Adjudicated Areas (§358.2)
- Alternatives to Groundwater Sustainability Plans (§358.4)
- Department Evaluation of Plan Alternatives (§358.6)

Phase 4

Implementation and Reporting



Phase 4 References (GSP Emergency Regulations)

Article 7. Reports, Assessments, and Amendments

Subarticle 1. Annual Reports

- Annual Report (§356.4)
- Department Review of Annual Reports (§356.6)

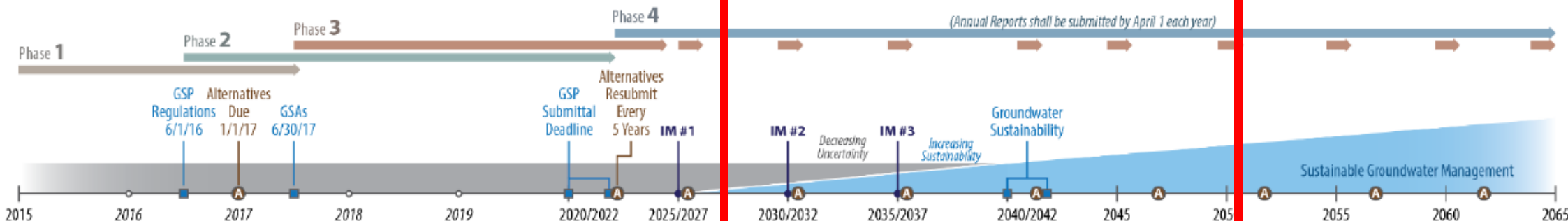
Subarticle 2. Periodic Evaluation of Plan

- Agency Evaluation and Assessment (§356.10)

Subarticle 3. Plan Amendments

- Amendments and Modifications to Plan (§356.12)

Sustainable Groundwater Management Planning and Implementation Horizon



= Stakeholder input opportunity *A(##) = Article Reference

Phase 3 Overview

1. DWR driven phase
2. Review and evaluation of GSPs to determine adequacy

Phase 3 References *(Draft GSP Regulations)*

Article 6. Evaluation and Assessment

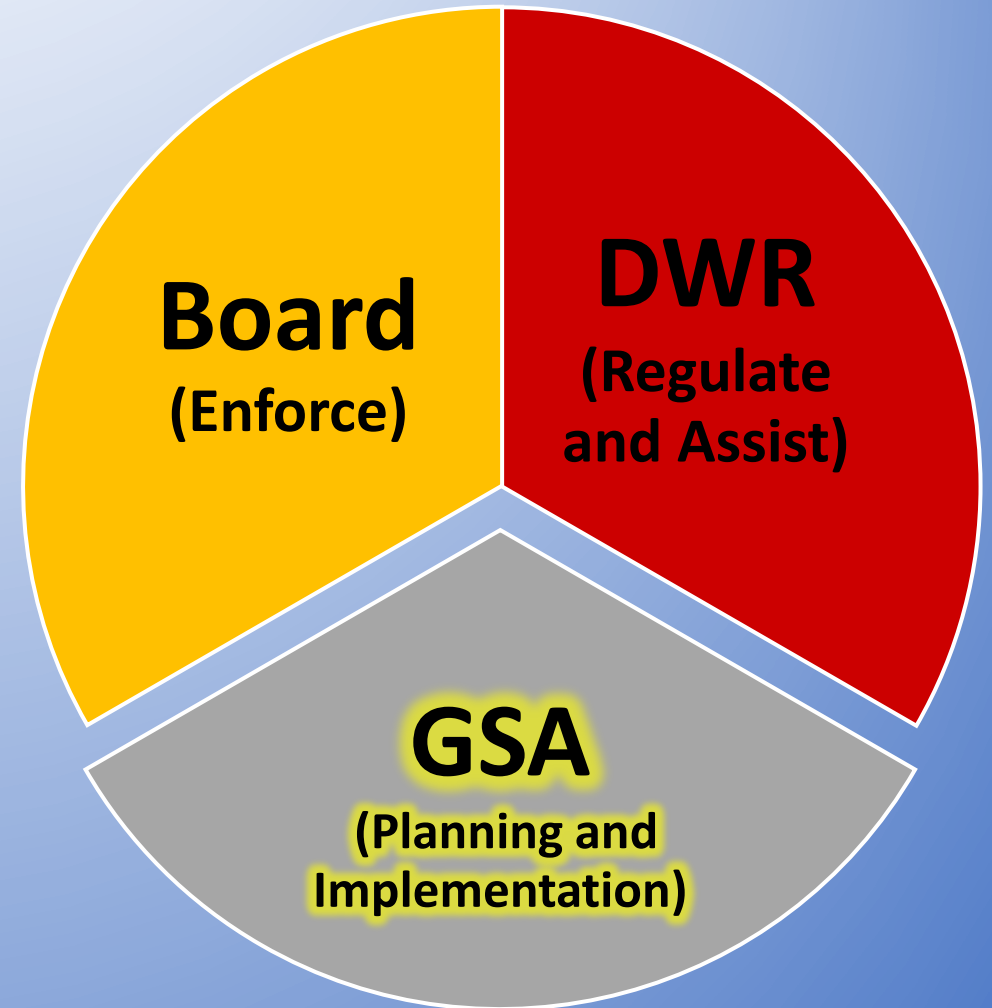
- Department Review of Initial Adopted Plan (§355.2)
- Criteria for Plan Evaluation (§355.4)
- Periodic Review of Plan by Department (§355.6)
- Consultation with Board (§355.8)
- Resolution of Conflicts by Department (§355.10)

Article 9. Alternatives and Adjudicated Areas

- Adjudicated Areas (§358.2)
- Alternatives to Groundwater Sustainability Plans (§358.4)
- Department Evaluation of Plan Alternatives (§358.6)

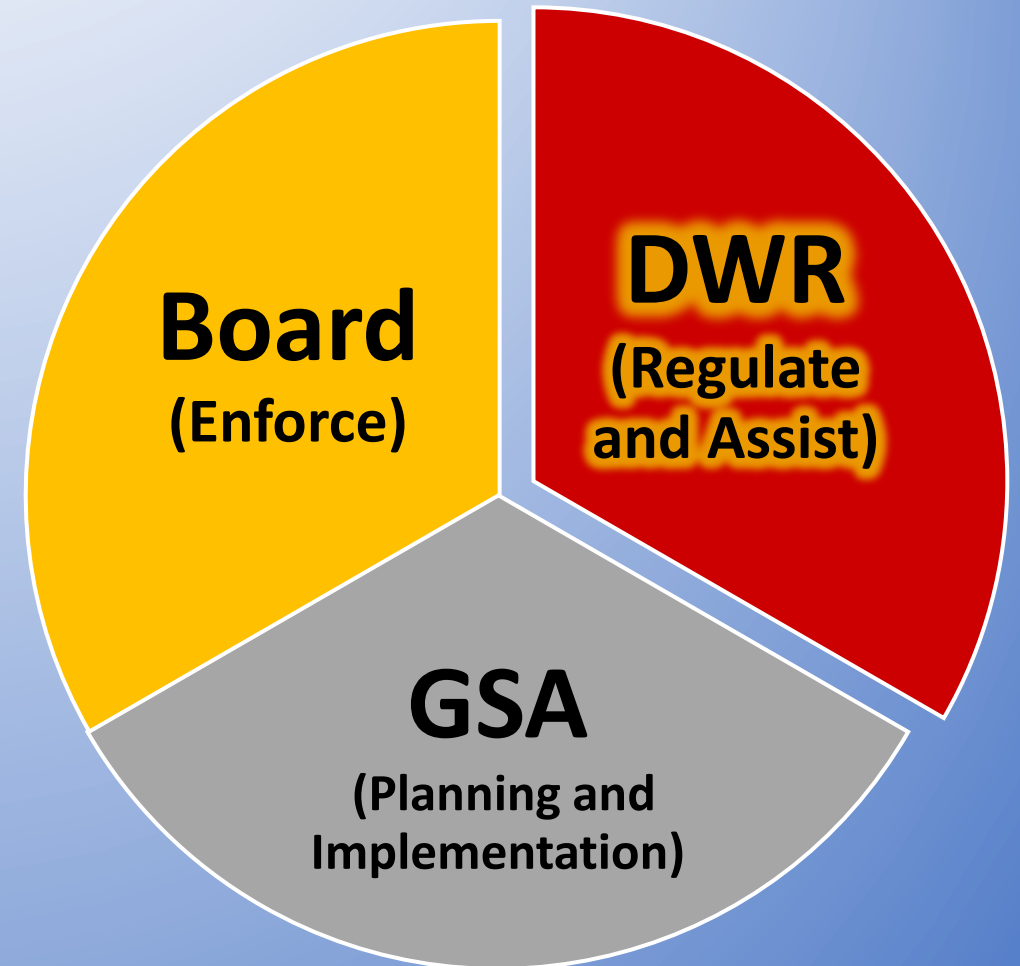
GSA Considerations

1. Develop and adopt a GSP to be submitted to DWR for review and approval
2. Required time for DWR to review and approve a GSP can vary and be substantial based on the complexity of a basin
3. GSAs should initiate planning steps to ensure required GSP SGMA deadlines are met



DWR's Role During Phase 3

1. Review and evaluate GSPs and Alternatives
2. Ensure GSPs conform with SGMP, GSP regulations, and are likely to achieve the sustainability goal of the basin
3. Determination of which GSPs do not contain all required components and potentially consult with the SWRCB
4. Evaluate GSAs progress towards sustainability and make a inadequate determination, triggering SWRCB intervention, if required



Evaluation and Assessment (Article 6)

DWR will assess GSPs over the 20-year implementation period and initial plans will be evaluated within a 2-year period.

Levels of DWR Assessment Include:

1. Adequate Plan or Adequate Process
2. Conditionally Adequate
3. Inadequate Determination

Pass/Fail Criteria

A GSP or Alternative may be inadequate unless it satisfies all of the following conditions:

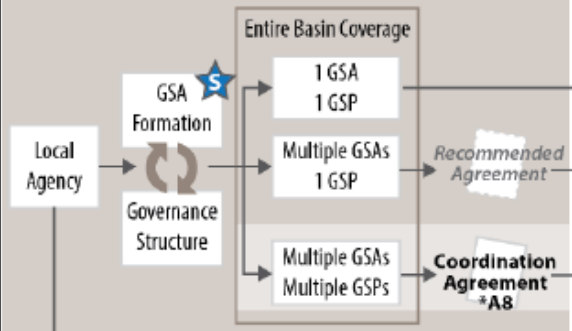
1. Submitted within the statutory period established by Water Code
2. Complete and includes all information required by SGMA and the regulations
3. One or Multiple GSPs must cover the entire basin.
4. The GSA or local agency has taken corrective actions, and addressed deficiencies in the GSP or Alternative identified by the DWR.

Phase 3 Key Dates

1. GSP submittal open – July 1, 2017
2. GSP submittal due – 2020/2022
3. First Alternative resubmittal due – 2022
4. Alternatives resubmit every five years
5. GSP re-evaluation every five years after GSP submittal
6. Interim milestones every five years after GSP submittal

Phase 1

GSA Formation and Coordination



Alternative: Local agencies may choose to submit an Alternative (see Article 9 for Alternatives)

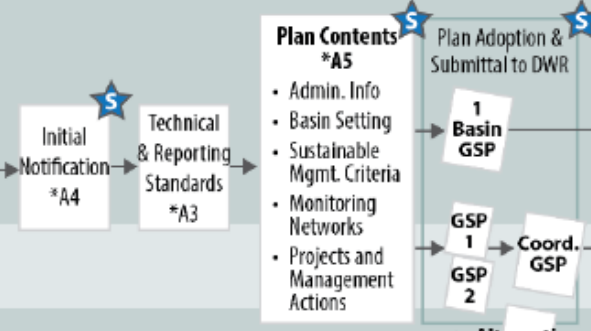
Phase 1 References (GSP Emergency Regulations)

Article 8. Coordination Agreements

- Interbasin Agreements (§357.2)
- Intra-basin Agreements (§357.4)

Phase 2

GSP Preparation and Submission



Phase 2 References (GSP Emergency Regulations)

Article 3. Technical and Reporting Standards

- Best Management Practices (§352.4)
- Data and Reporting Standards (§352.6)
- Data Management and Recordkeeping (§352.8)

Article 4. Procedures

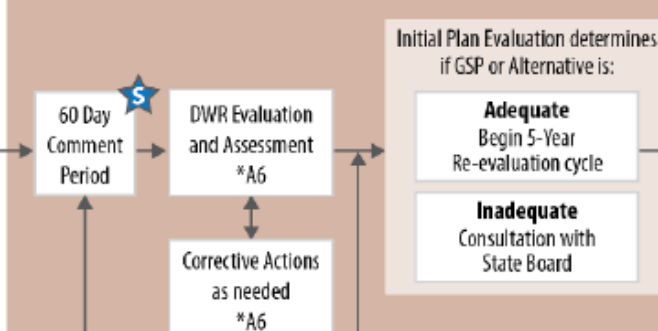
- Information Provided by the Department (§353.2)
- Reporting Provisions (§353.4)
- Initial Notification (§353.6)
- Public Comment (§353.8)
- Withdrawal or Amendment of Plan (§353.10)

Article 5. Plan Contents

- Subarticle 1. Administrative Information
- Subarticle 2. Basin Setting
- Subarticle 3. Sustainable Management Criteria
- Subarticle 4. Monitoring Networks
- Subarticle 5. Projects and Management Actions

Phase 3

GSP Review and Evaluation



Phase 3 References (GSP Emergency Regulations)

Article 1. Introductory Provisions

Article 2. Definitions

Article 3. Technical and Reporting Standards

- Best Management Practices (§352.4)
- Data and Reporting Standards (§352.6)
- Data Management and Recordkeeping (§352.8)

Article 6. Evaluation and Assessment

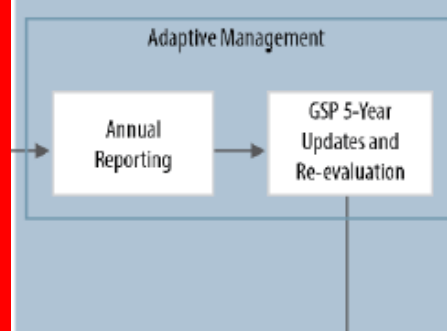
- Department Review of Initial Adopted Plan (§355.2)
- Criteria for Plan Evaluation (§355.4)
- Periodic Review of Plan by Department (§355.6)
- Consultation with Board (§355.8)
- Resolution of Conflicts by Department (§355.10)

Article 9. Alternatives and Adjudicated Areas

- Adjudicated Areas (§358.2)
- Alternatives to Groundwater Sustainability Plans (§358.4)
- Department Evaluation of Plan Alternatives (§358.6)

Phase 4

Implementation and Reporting



Phase 4 References (GSP Emergency Regulations)

Article 7. Reports, Assessments, and Amendments

Subarticle 1. Annual Reports

- Annual Report (§356.4)
- Department Review of Annual Reports (§356.6)

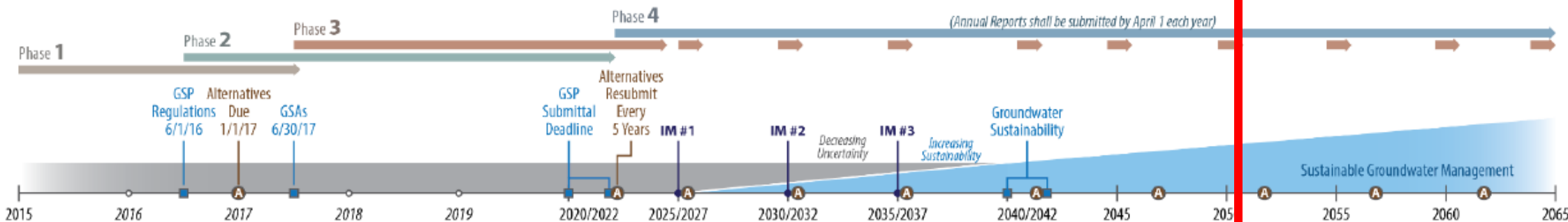
Subarticle 2. Periodic Evaluation of Plan

- Agency Evaluation and Assessment (§356.10)

Subarticle 3. Plan Amendments

- Amendments and Modifications to Plan (§356.12)

Sustainable Groundwater Management Planning and Implementation Horizon



= Stakeholder input opportunity *A(##) = Article Reference

Phase 4 Overview

- Locally driven phase
- Development of annual reports
- Development of GSP assessments completed every five years during the implementation of GSPs

Phase 4 References *(Draft GSP Regulations)*

Article 7. Reports, Assessments, and Amendments

Subarticle 1. Annual Reports

- Annual Report (§356.4)
- Department Review of Annual Reports (§356.6)

Subarticle 2. Periodic Evaluation of Plan

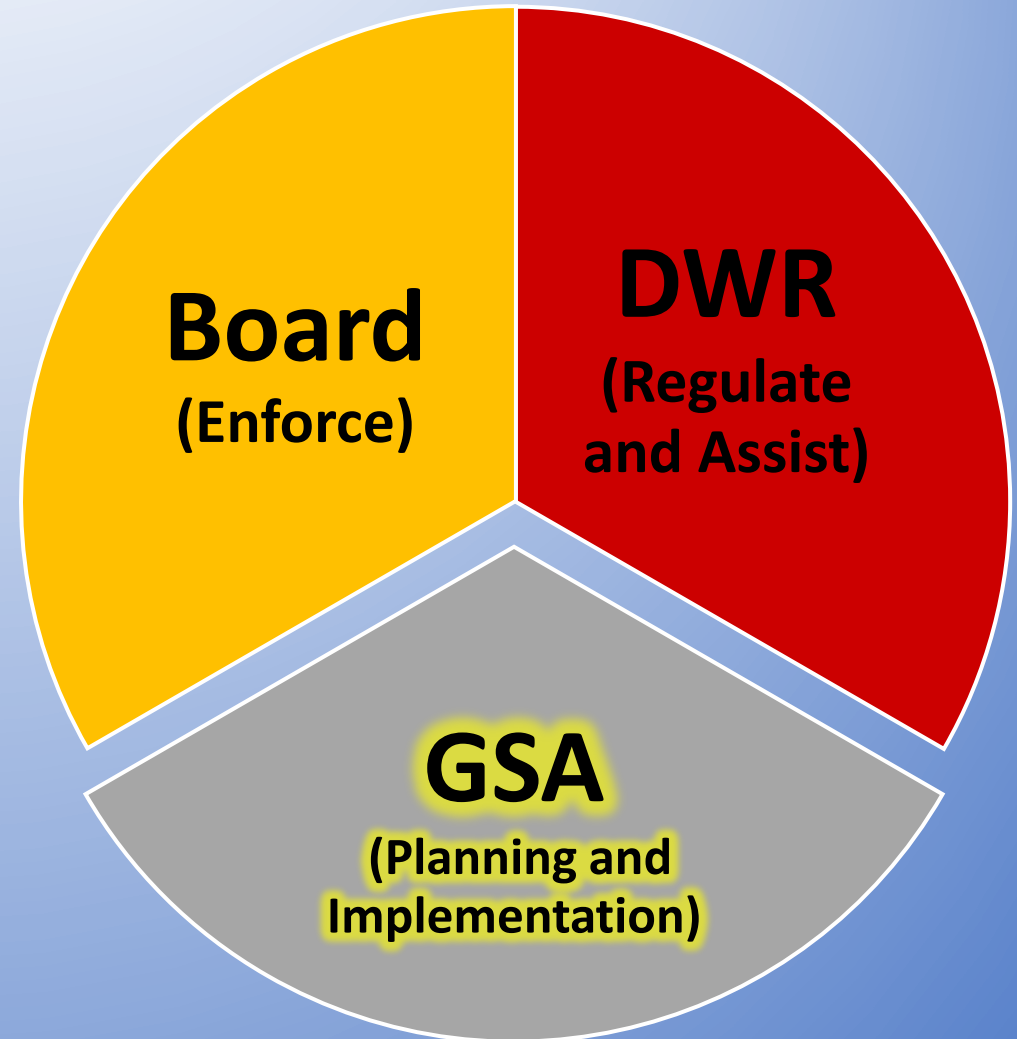
- Agency Evaluation and Assessment (§356.10)

Subarticle 3. Plan Amendments

- Amendments and Modifications to Plan (§356.12)

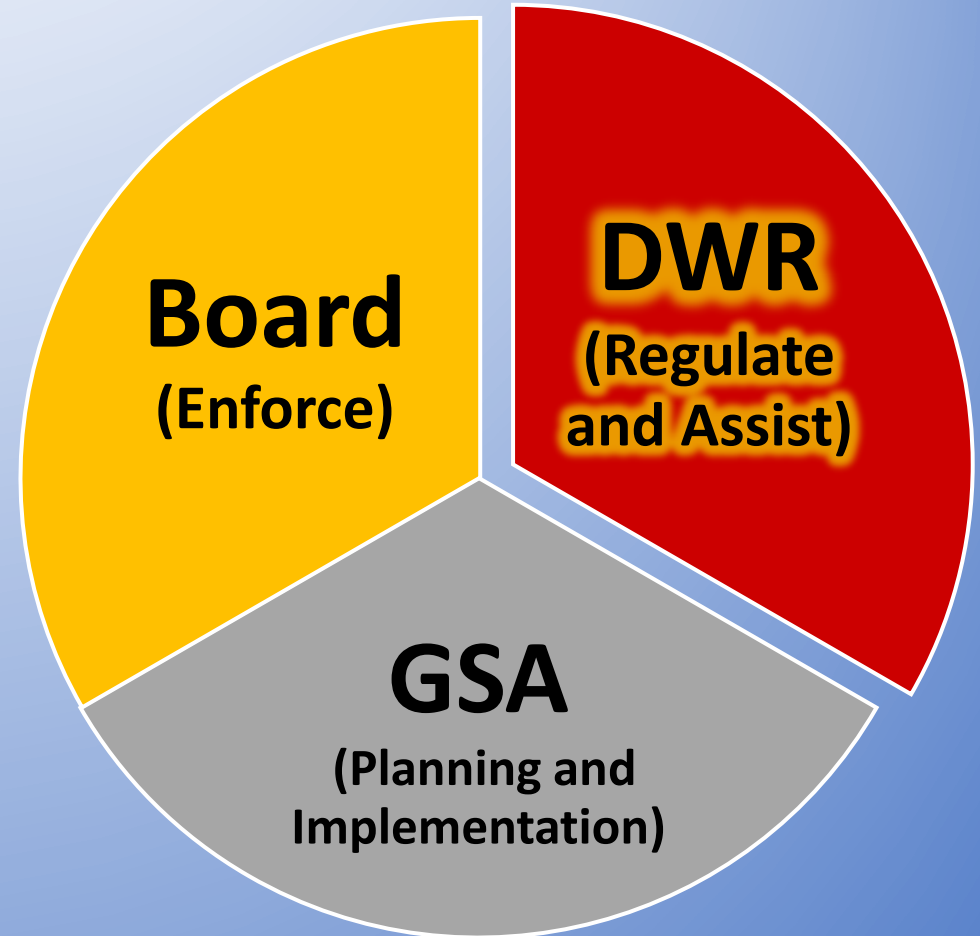
GSA Considerations

1. Continued GSA and GSP governance
2. Engage stakeholders and land use agencies
3. Implement compliance actions and projects
4. Conduct monitoring and data management
5. Conduct detailed analysis, which may include groundwater-surface water modeling
6. Submit annual reports following a standard DWR format

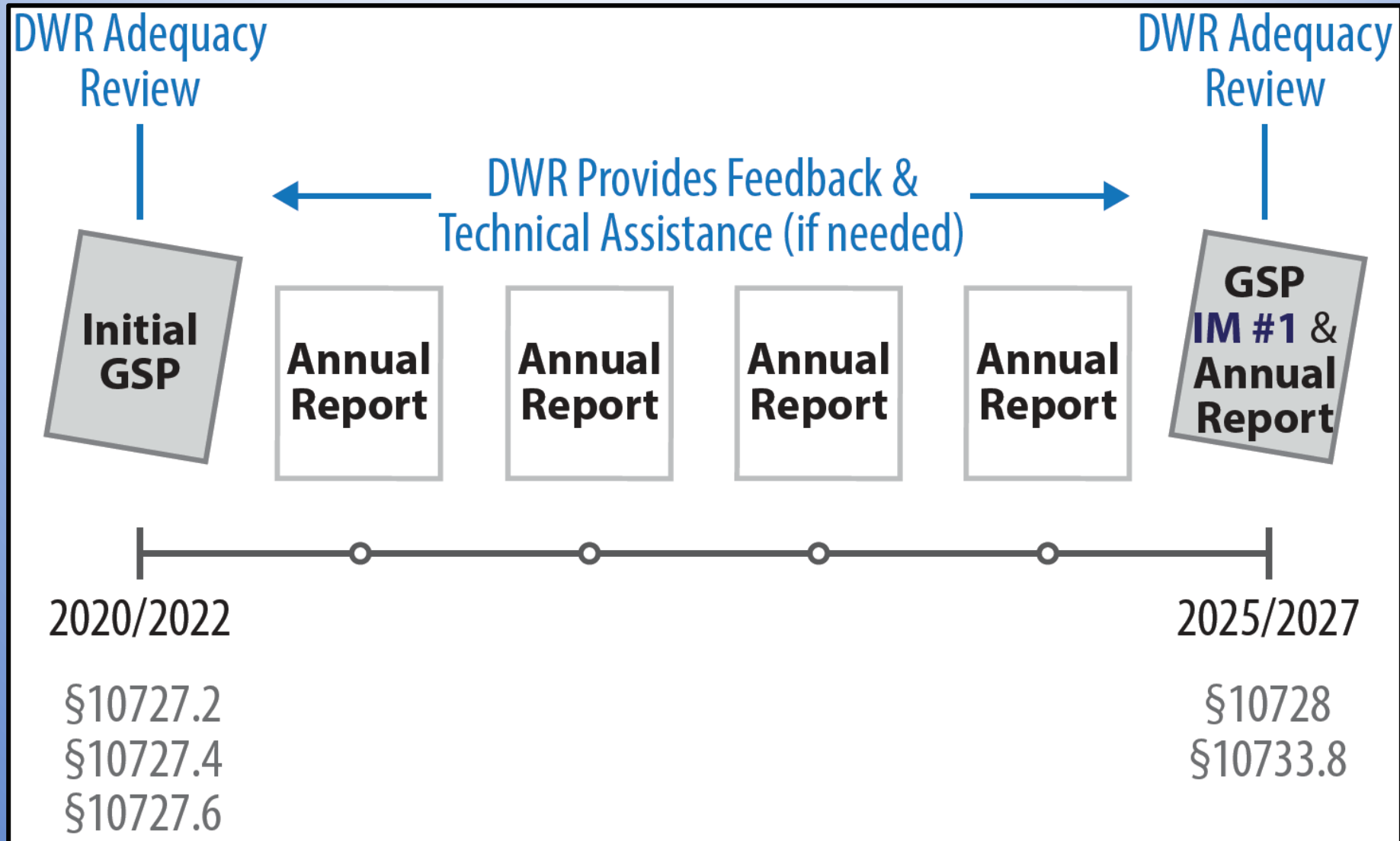


DWR's Role During Phase 4

1. Review and evaluate annual reports, GSP and Alternative updates
2. Ensure annual reports and GSPs conform with SGMA, regulations, and are still on course to likely achieve the sustainability goal of the basin
3. Determine any annual reports or GSP updates that do not meet the required SGMA components and consult with the SWRCB



Five-Year and Annual Reporting (Article 7)



Phase 4 Key Dates

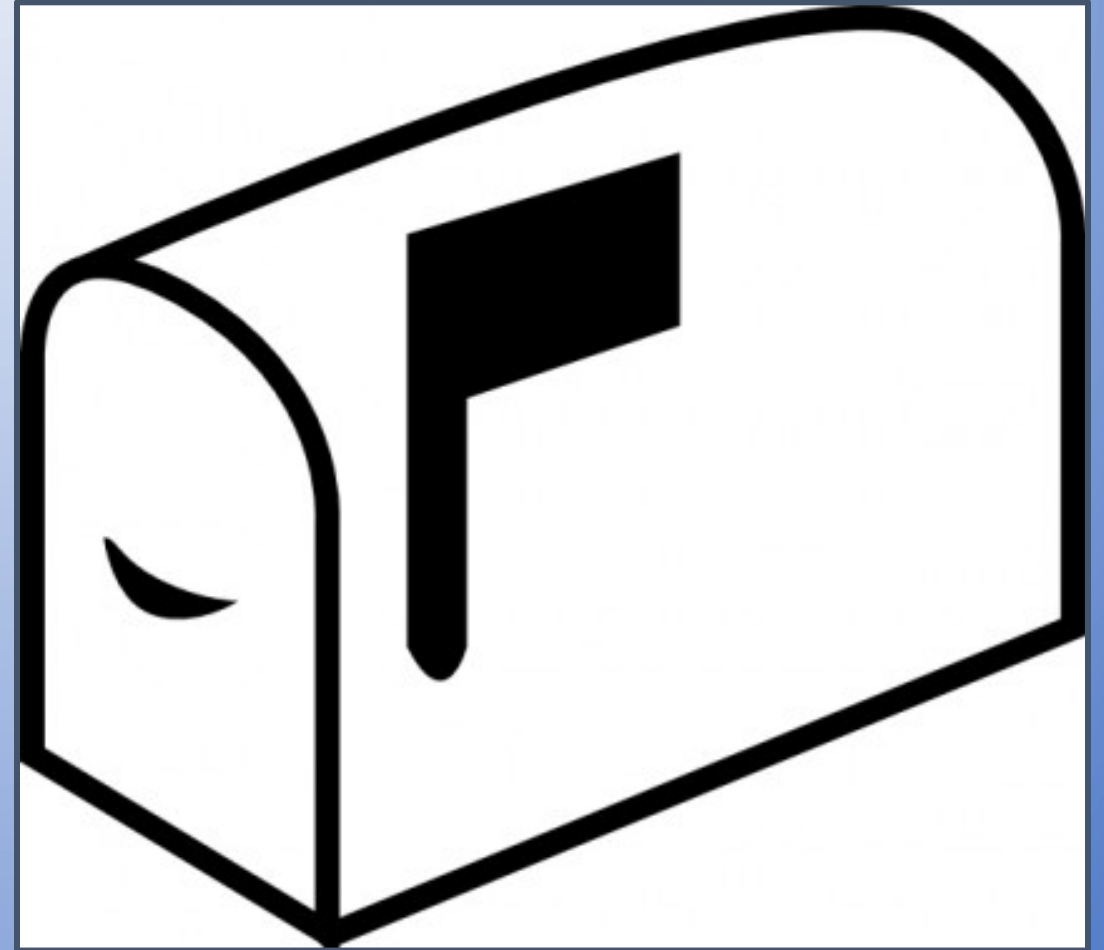
1. First Alternative resubmittal due – 2022
2. Alternatives resubmit every five years
3. Interim milestones every five years after GSP submittal
4. Annual reports submitted by April 1 each year
5. Groundwater sustainability goals attained – 2040/2042

GSP Public Meeting Schedule

<i>Public Meeting Schedule</i>		
Monday, March 21, 2016 VISALIA 4:00 P.M. to 6:00 P.M. Visalia Convention Center 303 E Acequia Avenue, Visalia	Tuesday, March 22, 2016 SANTA ANA 1:00 P.M. to 3:00 P.M. Delhi Community Center 505 E. Central Avenue, Santa Ana	Friday, March 25, 2016 SACRAMENTO 9:00 A.M. to 11:00 A.M. Secretary of State Building 1500 11th Street, Sacramento
Thursday, March 24, 2016 ONLINE WEBINAR 1:00 P.M. to 3:00 P.M. Please register for the webinar at: https://attendee.gotowebinar.com/register/2515354223176908292 After registering, you will receive a confirmation email containing information about joining the webinar.		

Comment Period

- Public Review and Comment Period is from February 18, 2016 to March 25, 2016
- Comments must be received electronically or postmarked on or before March 25, 2016



How to Submit Comments

1. Via comment card at public meetings
2. Email to SGMPS@water.ca.gov labeled “Subject: Draft GSP Emergency Regulations Public Comment”
3. Mail to:

California Department of Water Resources

Attn: Lauren Bisnett, Public Affairs Office

P.O. Box 942836

Sacramento, California 94236

Questions?