



FILED

2018 OCT 23 PM 3:15

**NOTICE OF PREPARATION OF AN ENVIRONMENTAL IMPACT REPORT
FOR THE
TIM BELL ROAD OVER DRY CREEK - BRIDGE (38C-0073)
REPLACEMENT PROJECT**

STANISLAUS CO. CLERK-RECORDER

Kalpna Suri

DATE: October 24, 2018
TO: Interested Agencies and Individuals
FROM: Stanislaus County Department of Public Works

The Stanislaus County Department of Public Works (Public Works) is preparing an Environmental Impact Report (EIR) for the Tim Bell Road over Dry Creek Bridge Replacement Project. Public Works is soliciting the view of interested persons and agencies on the scope and content of the information to be included in the EIR. Agencies should comment with regard to information relevant to the agencies' statutory responsibilities, as required by Section 15082 of the California Environmental Quality Act (CEQA) Guidelines. Public Works will also accept written comments regarding the scope and content from interested persons and organizations concerned with the Project, in accordance with the CEQA Guidelines Section 15083.

The scoping comment period begins October 24, 2018 and ends November 23, 2018. Please direct all written comments to: Stanislaus County Department of Public Works, Attention: Mr. Denis Bazyuk, 1716 Morgan Street, Modesto, CA 95358. **Individuals and organization/agency representatives are invited to provide written and oral comments at a scoping meeting that will be held on Wednesday evening, November 14, 2018 from 6:00 to 7:00 p.m. at the Waterford Community Center, 540 C Street, Waterford, CA.** Persons with disabilities that may require special accommodations at the scoping meeting should contact Tammy Teurn at (916) 679-8868.

Telecommunications Device for the Deaf (TDD) users may contact the California Relay Service TDD at (800) 735-2922 or 711. This notice can also be found on the Stanislaus County Public Works website at <http://www.stancounty.com/publicworks/projects.shtm>

PROJECT LOCATION: The Tim Bell Road over Dry Creek Bridge Replacement Project is located along Tim Bell Road approximately 0.8 mile south of the intersection with Claribel Road, and approximately five miles northeast of the community of Waterford in eastern Stanislaus County (Figures 1 and 2). Tim Bell Road heads north and east from Waterford. The Stanislaus County General Plan lists Tim Bell Road as a Minor Collector with two lanes of traffic and 80 feet of right-of-way.

BACKGROUND: The existing 131-foot-long, 20-foot wide bridge was constructed in 1925. The bridge structure is a 90-foot reinforced concrete arch with open spandrel wood members and two 20-foot approach spans. The bridge is eligible for listing on the National Register of Historic Properties as an unusual example of a hybrid timber-concrete bridge. While the original timbers and deck have been replaced, the arch rings are intact and the bridge retains a fair degree of integrity of design, materials, workmanship, feeling, and association.

The bridge has a sufficiency rating of 53.3, and is currently classified as Functionally Obsolete due to several deficiencies. The bridge deck geometry and approach roadway alignment do not meet American Association of State Highway and Transportation Officials (AASHTO) standards. The bridge deck width is 20 ft, which does not meet the minimum AASHTO width of 24 ft (travel way plus 2 ft each side) for average daily traffic (ADT) below 400 vehicles. All wood spandrel caps, columns, bracing and sill plates are inadequate to support AASHTO standard truck loading. The concrete arch size is inadequate to support standard truck loading. The bridge wood barrier does not meet current AASHTO crash tested barrier capacity requirements. The bridge is overtopped during a 100-year storm. Wood spandrel bents are not adequate to resist seismic loading. The County evaluated the deficiencies and determined that bridge replacement was appropriate.

The primary objective of the project is to provide long-term safe vehicular and farm equipment across Dry Creek. The project will result in the removal of the existing, historic bridge. The demolition of a historic structure cannot be mitigated to less than significant under CEQA; therefore, the County will prepare a CEQA EIR.

Date removed from posting 11/27/18

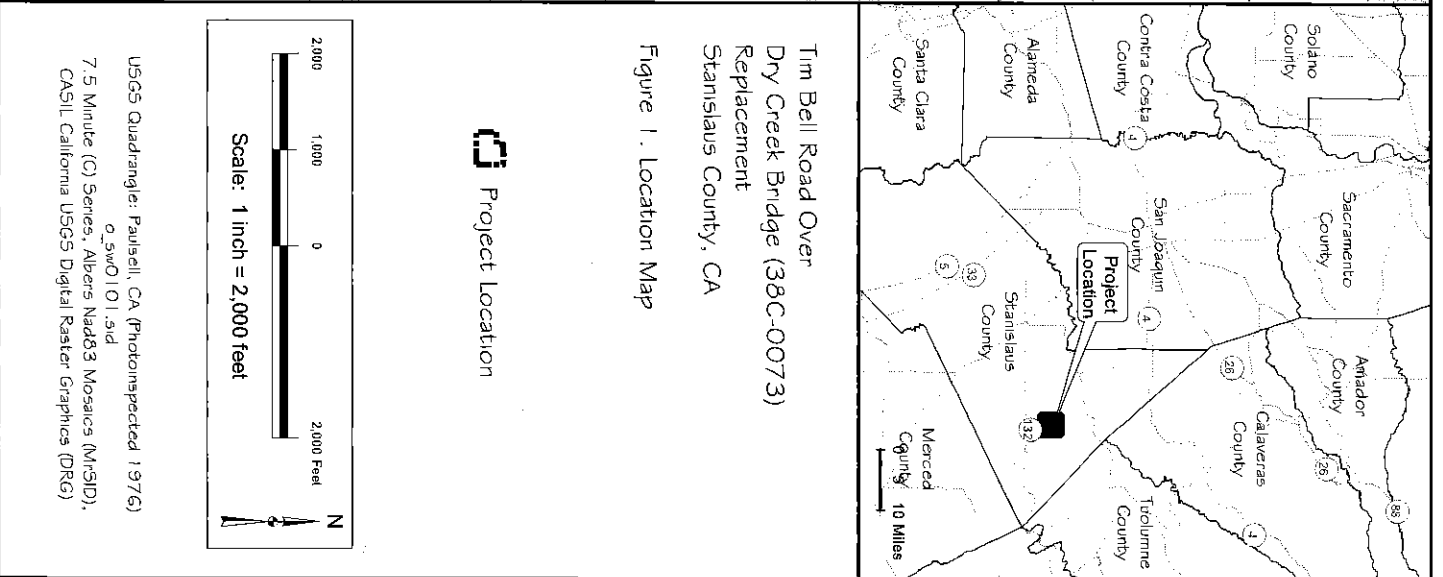
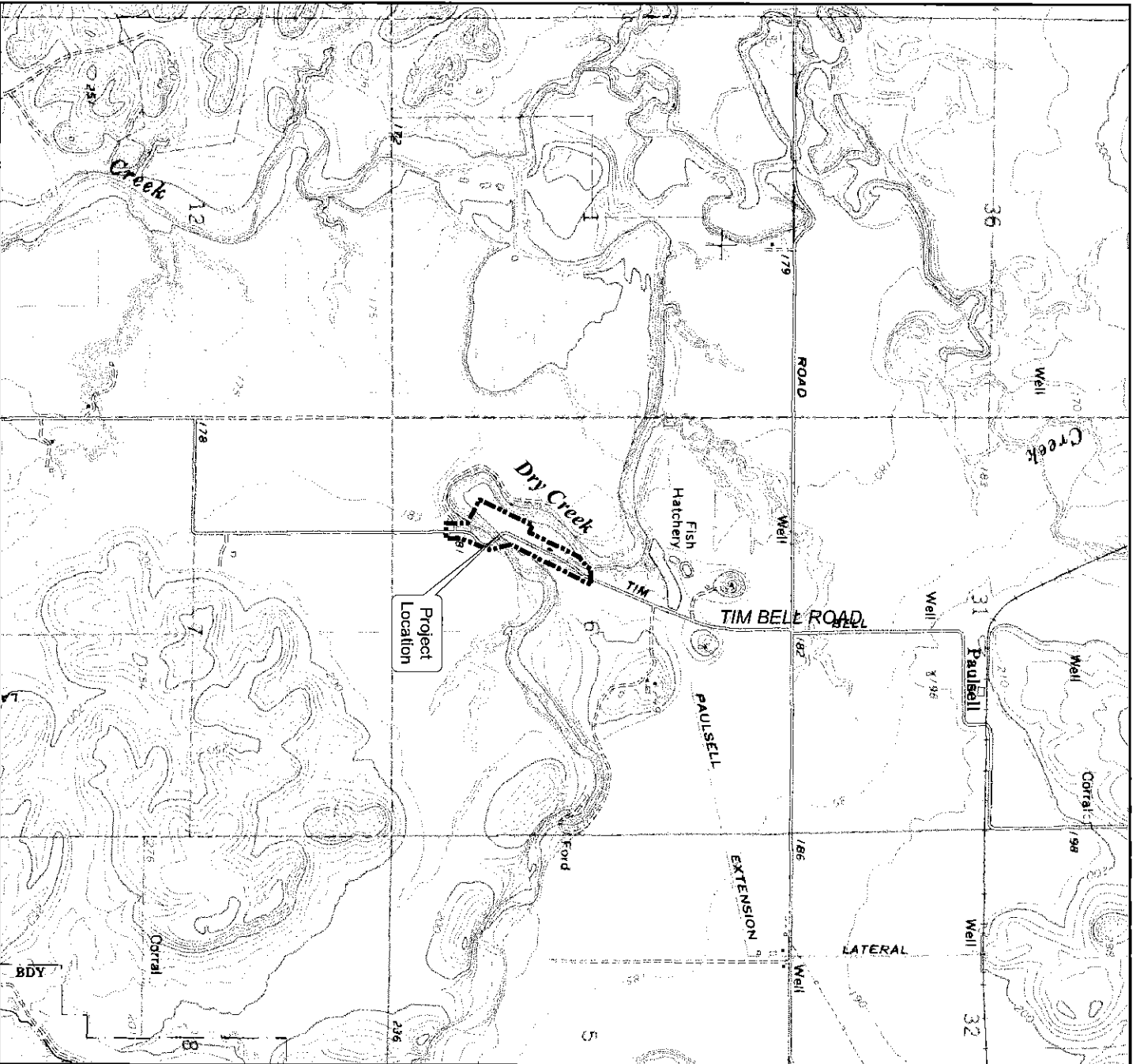


PROJECT DESCRIPTION: Stanislaus County proposes to replace the existing Tim Bell Road Bridge with a new, approximately 960-ft bridge that spans over the 100-year floodplain. The new, two-lane bridge will have a Caltrans approved 26-ft clear deck width. The deck width accommodates two 11 ft travel lanes and two 2 ft shoulders. The new alignment improves sight distance, removes the existing S-curve, and provides for a 45 miles per hour design speed. The new bridge will be shifted downstream of the existing bridge. The proposed Project includes approximately 1,900-ft of road and bridge improvements. Road improvements south of the bridge will be approximately 220 ft long to safely conform into the existing alignment. At the north end of the Project, approximately 700 ft of road improvements avoids creating an S-curve. The bridge structure type will be a cast-in-place or precast concrete slab to minimize the elevation difference between the existing road profile and new profile in front of the private residence. At Dry Creek, the bridge span will be approximately 140 to 160 ft long to clear span the ordinary high water mark elevation.

The County is evaluating two bridge types with different aesthetic features to mitigate for the removal of the historic structure (Figures 3 and 4, Bridge General Plans). The first bridge type would include a concrete arch and open spandrels over Dry Creek. The other spans would be concrete slabs. The second bridge type would be a haunched, concrete box-girder over Dry Creek. The two backing spans would be haunched. The spans over the 100-yr floodplain would be a concrete slabs.


Public Works will use Highway Bridge Program (HBP) funds to replace the existing structure to improve roadway safety and comply with the American Association of State Highway and Transportation Officials (AASHTO) design guidelines and County standards.

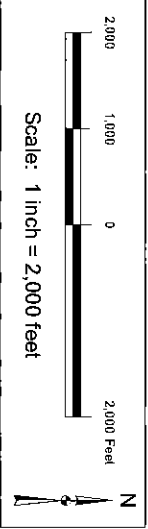
ENVIRONMENTAL PROCESS AND PUBLIC INPUT: Following receipt of input during the comment period, the County will prepare a Draft EIR that will describe the Project and alternatives (including a no project alternative as required by CEQA) and will identify the potential environmental effects and mitigation measures that may be necessary to minimize or avoid such effects. The Draft EIR will be made available for public review and input for a 45-day review period. The County will consider all comments received and will prepare a Final EIR which identifies any necessary changes to the Draft and provides responses to all comments on the Draft. The County Board of Supervisors will consider certification of the Final EIR prior to approval of actions required for undertaking the Project.



Tim Bell Road Over
 Dry Creek Bridge (38C-0073)
 Replacement
 Stanislaus County, CA

Figure 1. Location Map


 Project Location



USGS Quadrangle: Paulsell, CA (Photomapped 1976)
 0.5W0101.sld
 7.5 Minute (C) Series, Albers NAD83 Mosaics (MRSID),
 CASIL California USGS Digital Raster Graphics (DRG)



Tim Bell Road over
 Dry Creek Bridge (38C-0073)
 Replacement
 Stanislaus County, CA

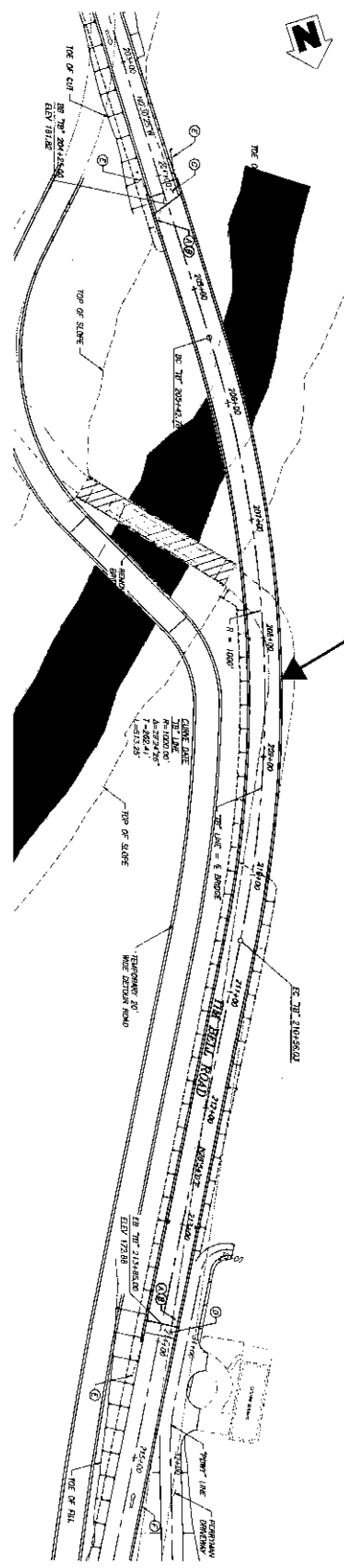
 Biological Study Area (BSA)

Aerial Photograph: 13 September 2017
 GEO1 Vivid DigitalGlobe Imagery
 ESRI Imagery Basemap layer

Figure 2. Aerial Photograph

SPANDREL ARCH OVER DRY CREEK

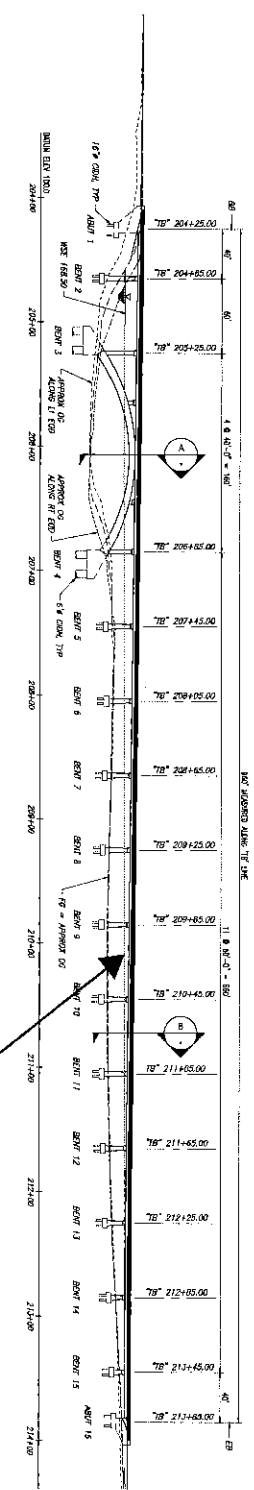
PLAN
 1" = 50'



New Tim Bell Road Bridge

100 Year Flood High
 Water Elevation

ELEVATION
 1" = 50'



PROFILE GRADE
 1" = 50'



- NOTES:**
1. PLAN NUMBER NO. 14101-0013 & DATE OF COMPLETION
 2. PLAN "NEW TIM BELL ROAD BRIDGE"
 3. STRUCTURE APPROXIMATE TYPE (N.C.S.D.)
 4. STRUCTURE APPROXIMATE TYPE (N.C.S.D.)
 5. APPROXIMATE TYPE (N.C.S.D.)
 6. APPROXIMATE TYPE (N.C.S.D.)
 7. APPROXIMATE TYPE (N.C.S.D.)
 8. APPROXIMATE TYPE (N.C.S.D.)
- LEGEND:**
- 1. BRIDGE DIRECTION OF TRAVEL
 - 2. APPROXIMATE LANE OR REMOVAL
 - 3. APPROXIMATE DIRECTION OF FLOW

H2R
 2355 IRON POINT ROAD
 FOLSOM, CA 95630
 916-911-4700

811
 CALL BEFORE YOU DIG

GP-1A
 SHEET
 18 OF 25 SHEETS

BRIDGE GENERAL PLAN
 ALTERNATIVE I
 IMPROVEMENT PLANS FOR
 TIM BELL ROAD OVER DRY CREEK
 BRIDGE REPLACEMENT PROJECT
 STANISLAUS COUNTY, CA

Stanislaus County
 ENGINEERING

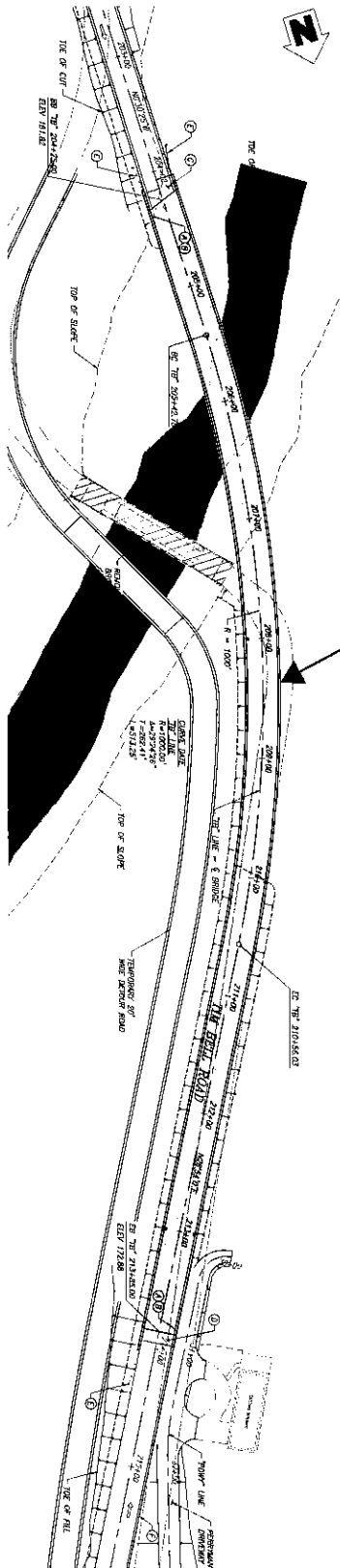
STANISLAUS COUNTY
 DEPARTMENT OF PUBLIC WORKS
 ENGINEERING AND OPERATIONS DIVISION
 1716 MORGAN ROAD - MOKESTO, CA 95359

REVISIONS UNDER THE DIRECTION OF:

NO.	DESCRIPTION	DATE	APPROVED

35%
 02/02/2017

BOX GIRDER ARCH OVER DRY CREEK

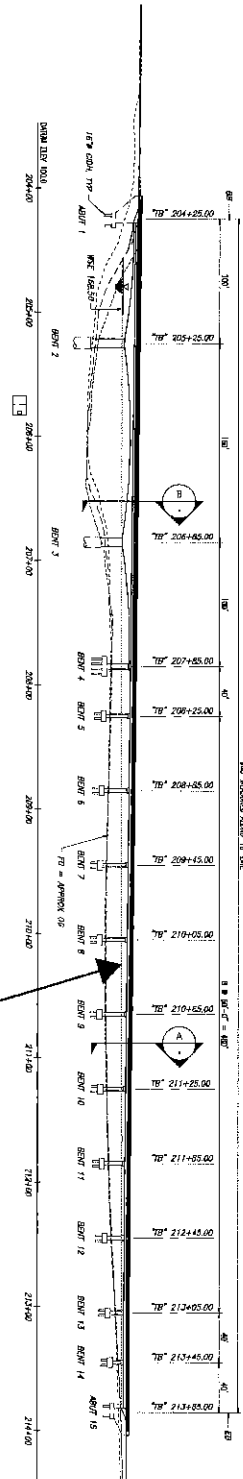


PLAN
 1" = 50'

New Tim Bell Road Bridge

100 Year Flood High
 Water Elevation

ELEVATION
 1" = 50'



PROFILE GRADE
 1" = 50'

- NOTES:**
- 1. PLAN THENCE TO J.C. 0073 & HEAD OF CONSTRUCTION
 - 2. PLAN TIM BELL ROAD BRIDGE
 - 3. STRUCTURE APPROXIMATE FROM NASSO
 - 4. STRUCTURE APPROXIMATE FROM NASSO
 - 5. BASED ON ROAD PLANS
 - 6. THE 1 REMAINING WALL
- LEGEND:**
- INDICATES DIRECTION OF TRAFFIC
 - INDICATES LIMITS OF REMOVAL
 - INDICATES DIRECTION OF FLOW



GP-1B
 22 of 25 SHEETS

BRIDGE GENERAL PLAN
 ALTERNATIVE 2
 IMPROVEMENT PLANS FOR
 TIM BELL ROAD OVER DRY CREEK
 BRIDGE REPLACEMENT PROJECT
 STANISLAUS COUNTY, CA



STANISLAUS COUNTY
 DEPARTMENT OF PUBLIC WORKS
 ENGINEERING AND OPERATIONS DIVISION
 1716 MORGAN ROAD - MODOesto, CA 95358

NO.	REVISIONS	DATE	APPROVED

