



# A Strong Agricultural Economy/Heritage

Agricultural Commissioner  
Cooperative Extension

## A Strong Agricultural Economy/Heritage

Recognizing the vital role that agriculture plays in the community, the Stanislaus County Board of Supervisors adopted this priority to support the County's strong agriculture economy and heritage. Agriculture is the County's number one industry, generating close to \$3.7 billion a year.



Farmland conversion, air pollution, soil salinity and drainage, and agricultural water supply and water quality are major issues to be addressed if Stanislaus County is to remain an important and vital agriculture area. Equally important is the preservation of the unique agriculture heritage.

- ◆ The Agricultural Commissioner's Office supports and protects the well being of agriculture and the community through the oversight of pesticide application, storage of agricultural products, certification of exports, prevention of the entry and spread of harmful insects, weeds, and plant diseases and the certification of agricultural product quality; and
- ◆ The University of California Cooperative Extension conducts research and educational programs tailored to the needs of Stanislaus County and provides oversight of 4-H youth development programs. These programs are critical to preserving and protecting agriculture in the community and supporting the growth of the agriculture industry of tomorrow.

### **FISCAL YEAR 2014-2015 ISSUES**

The 2014-2015 Final Budget recommends \$5,814,523 in appropriations for this priority area. These expenditures are funded by a combination of \$3,216,547 in department revenue, \$2,581,084 in General Fund contribution and \$16,892 in fund balance.

The Agricultural Commissioner will be able to maintain the current level of service provided to the community through the use of a portion of the net county cost savings from prior years, and the use of increased State funding to protect the County's valuable agricultural resources. This is primarily funded through increased unclaimed gas tax and mill tax reimbursement revenue materializing higher than originally budgeted. This additional State funding will allow the Department to conduct egg inspections at production and wholesale facilities, surveillance activities of the glassy-winged sharpshooter, trapping activities for the detection of the light brown apple moth, conduct

surveillance and agricultural inspection activities of cantaloupe fields, and to spot check flea markets and swap meets for gunny sacking activities in Stanislaus County.

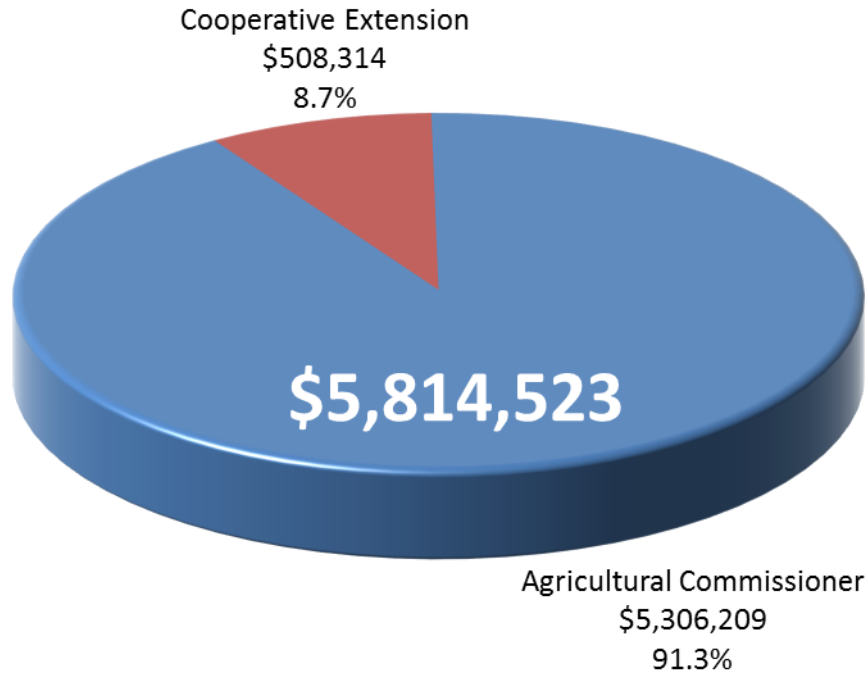
The Department developed the Purchase and Sale of Walnuts ordinance to prevent walnut theft by requiring sellers to provide documentation for proof of ownership and establishing a buying period. The ordinance will be implemented in the fall of 2014 and it is anticipated the ordinance will decrease the amount of walnuts stolen directly from farmer's orchards.

The University of California (UC) Cooperative Extension Stanislaus County continues to provide practical, researched-based solutions to local industry problems. The 4-H Youth Development program continues to provide a wide variety of activities and learning opportunities for their young members. The Department also continues its efforts in improving fertility practices among farmers and developing more productive crop varieties for local farmers. At the recommended level of funding, the Department can maintain the current level of service through the use of net county cost savings from prior years and an increase in General Fund contribution.

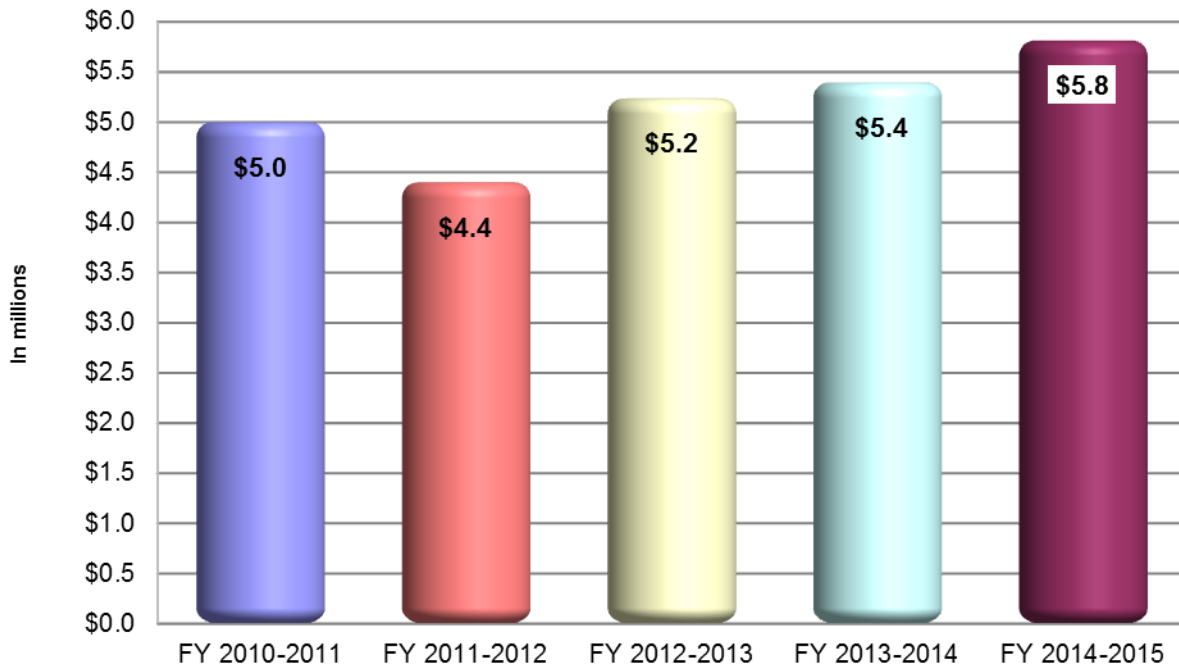


## A Strong Agricultural Economy/Heritage

### Recommended Appropriations Fiscal Year 2014-2015



### Five Year Comparison of Appropriations Final Budget

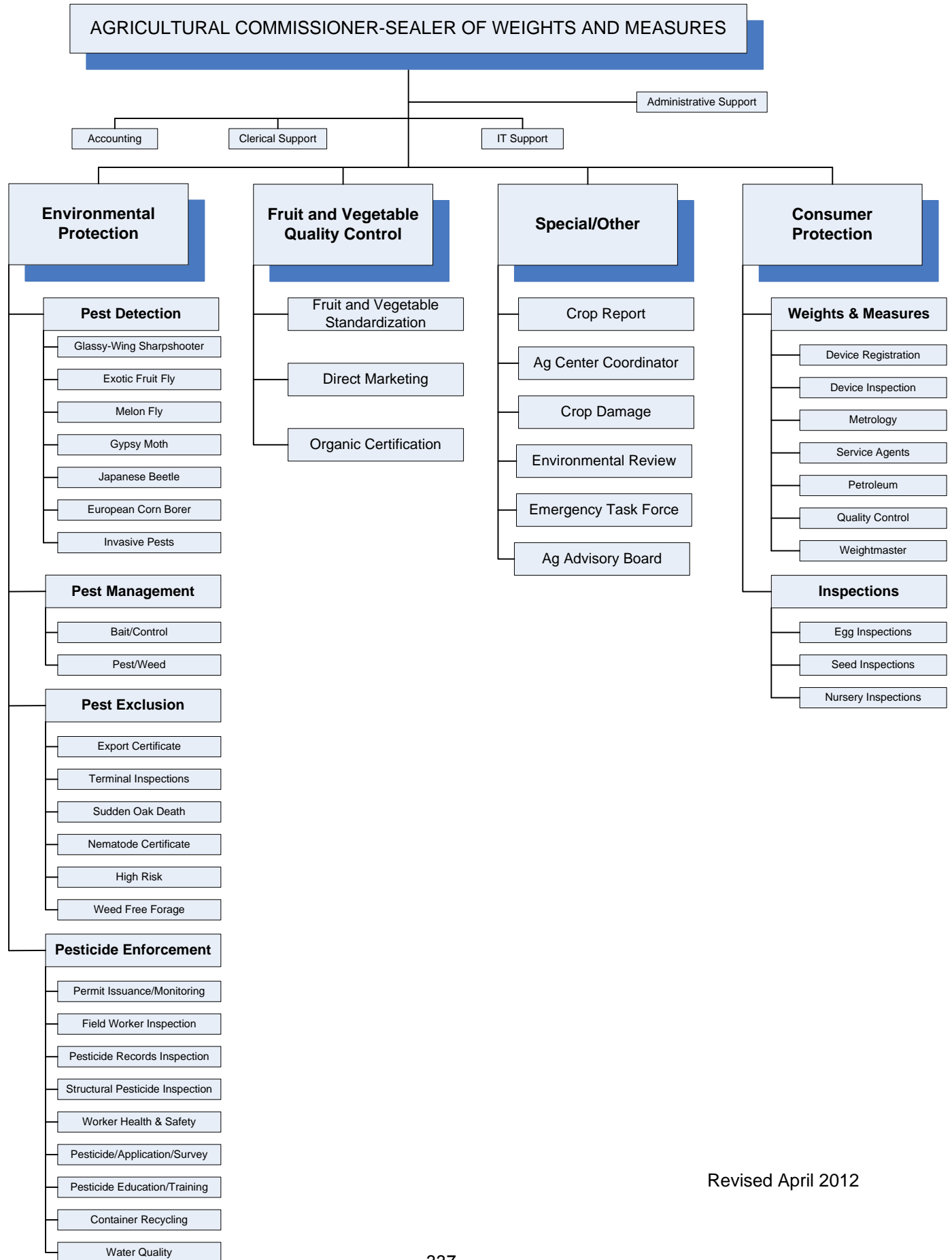




# A Strong Agricultural Economy/Heritage

<b>PAGE</b>				<b>Recommended 2014-2015</b>
<b>AGRICULTURAL COMMISSIONER</b>				<b>\$5,306,209</b>
	<b>Fund</b>	<b>Org</b>		
339	0100	0010100	Agricultural Commissioner	\$5,306,209
<b>COOPERATIVE EXTENSION</b>				<b>\$508,314</b>
	<b>Fund</b>	<b>Org</b>		
345	0100	0021100	Cooperative Extension	\$491,422
348	1766	0021401	Farm and Home Advisors Research Trust	\$16,892
<b>TOTAL</b>				<b>\$5,814,523</b>

# STANISLAUS COUNTY AGRICULTURAL COMMISSIONER



Revised April 2012



**AGRICULTURAL COMMISSIONER**  
**Milton O’Haire, Agricultural**  
**Commissioner**  
**and Sealer of Weights and**  
**Measures**

<b>BUDGET AT A GLANCE</b>	
Gross Costs	\$5,306,209
Total Revenue	\$3,210,047
Fund Balance/Retained Earnings	\$0
<b>Net County Cost</b>	<b>\$2,096,162</b>
Total Recommended Staffing	35
% Funded by Local Discretionary Funds	39.5%

**MISSION STATEMENT**

The mission of the Agricultural Commissioner’s Office is to “Support and Protect the Well-being of Agriculture, Business and the Community.”

**ACCOMPLISHMENTS AND OBJECTIVES**

The Accomplishments of 2013-2014 and Objectives for the 2014-2015 Fiscal Year for the Agricultural Commissioner include:

<b>FISCAL YEAR 2013-2014 ACCOMPLISHMENTS</b>	<b>FISCAL YEAR 2014-2015 OBJECTIVES</b>
<ul style="list-style-type: none"> <li>◆ Partnering through California Department of Food and Agriculture (CDFA), established a new retail inspection protocol for eggs.</li> <li>◆ Working with U.S. Department of Agriculture (USDA) and CDFA, established procedures for a Pre-Quarantine agreement for Asian Citrus Psyllid.</li> </ul>	<ul style="list-style-type: none"> <li>◆ In conjunction with CDFA, roll out the Stanislaus County egg inspection software to all counties in the state who are participating in the egg inspection program.</li> <li>◆ Implement the Stanislaus County Purchase and Sale of Walnuts Ordinance.</li> <li>◆ Hold a pesticide disposal event, allowing growers in Stanislaus County to dispose of unwanted pesticides.</li> </ul>

**STANISLAUS COUNTY, CALIFORNIA**  
**Fiscal Year 2014-2015**



**PUBLIC RESOURCES**  
**Protection Inspection**

**AGRICULTURAL COMMISSIONER**

Budget Unit 0100 0010100  
 General Fund

**SERVICES PROVIDED**

The Agricultural Commissioner's Office oversees the use of pesticides applied in the production and storage of agricultural crops as well as performs inspections to ensure that equity prevails in the marketplace. Services include: plant product export certification for shippers, preventing the introduction or spread of harmful insects, weeds, plant diseases and other pests; conducting surveys for infestations of pests and carrying out pest eradication programs; ensuring that quality and/or labeling requirements are met for fruits and vegetables, eggs, nursery stock, petroleum products and packaged goods; monitoring the accuracy of advertised pricing at the retail level; and testing the accuracy of weighing and measuring devices used in commercial trade.

<b>Agricultural Commissioner</b>					
<b>Classification</b>	<b>2012-2013 Actual</b>	<b>2013-2014 Actual</b>	<b>2014-2015 Requested Final Budget</b>	<b>2014-2015 Recommended Adjustments</b>	<b>2014-2015 Recommended Final Budget</b>
Taxes	\$0	\$0	\$0	\$0	\$0
Licenses, Permits, Franchises	\$440,217	\$439,632	\$424,500	\$0	\$424,500
Fines, Forfeitures, Penalties	\$0	\$0	\$0	\$0	\$0
Revenue from use of Assets	\$4,713	\$7,663	\$6,000	\$0	\$6,000
Intergovernmental Revenue	\$2,032,225	\$2,057,846	\$2,047,147	\$0	\$2,047,147
Charges for Service	\$710,411	\$750,393	\$732,400	\$0	\$732,400
Miscellaneous Revenue	\$385	\$0	\$0	\$0	\$0
Other Financing Sources	\$180	\$0	\$0	\$0	\$0
<b>Total Revenue</b>	<b>\$3,188,131</b>	<b>\$3,255,534</b>	<b>\$3,210,047</b>	<b>\$0</b>	<b>\$3,210,047</b>
Salaries and Benefits	\$3,125,446	\$3,181,348	\$3,270,802	\$1,191,442	\$4,462,244
Services and Supplies	\$266,963	\$289,049	\$325,167	\$0	\$325,167
Other Charges	\$339,104	\$360,350	\$387,698	\$0	\$387,698
Fixed Assets					
Buildings & Improvements	\$37,428	\$0	\$0	\$0	\$0
Equipment	\$60,121	\$0	\$51,000	\$0	\$51,000
Other Financing Uses	\$86,595	\$91,471	\$0	\$0	\$0
Equity	\$0	\$0	\$0	\$0	\$0
Intrafund	\$99,483	\$89,102	\$80,100	\$0	\$80,100
Contingencies	\$0	\$0	\$0	\$0	\$0
<b>Gross Costs</b>	<b>\$4,015,140</b>	<b>\$4,011,320</b>	<b>\$4,114,767</b>	<b>\$1,191,442</b>	<b>\$5,306,209</b>
Fund Balance	\$0	\$0	\$0	\$0	\$0
<b>Net County Cost</b>	<b>\$827,009</b>	<b>\$755,786</b>	<b>\$904,720</b>	<b>\$1,191,442</b>	<b>\$2,096,162</b>

**PROGRAM DISCUSSION**

At the requested level of funding, the Department can maintain the core programs in its mission to support and protect the well-being of Agriculture, Business, and the Community. These are considered to be core programs because they affect a large number of people and/or large geographic areas and have great economic impact potential. These programs provide benefits and protection to the general public, industry and to the environment.



These programs include:

Issuing Phytosanitary Certificates – The Department, working under the auspices of the United States Department of Food and Agriculture, inspects product destined for export to ensure that it meets all of the requirements of the country of destination. If all requirements are met, a Phytosanitary Certificate is issued which allows the product to reach its final destination. No raw agricultural product may be exported without these inspections taking place. The Department anticipates performing 9,600 Phytosanitary inspections in 2014-2015.

Pest Detection Trapping – Working with a staff of 18 extra-help Trappers, the Department places insect traps throughout the County to establish a first line of defense against harmful exotic pests. Early detection and any subsequent eradication efforts are essential in keeping open the export paths which our agricultural producers rely on. The Phytosanitary Certificates issued by the Department are often predicated on the “Free From” status that is established through the Pest Detection trapping program. The Department will deploy and monitor 5,070 traps in 2014-2015.

Pesticide Use Enforcement - The Department, working in conjunction with the California Department of Pesticide Regulation, monitors the purchase, storage and use of pesticides in the County to ensure adherence to label requirements and to enforce laws and regulations concerning worker safety and the environment. As part of this effort, the Department will annually review and issue over 1,800 permits for the use of restricted materials and will conduct 850 inspections concerning field workers, records, pesticide applications, and fumigations. In addition, the Department will annually conduct approximately 75 investigations of agricultural, industrial, institutional, and residential pesticide incidences.

Pest Exclusion – The Department will invest approximately 1,700 hours in the Pest Exclusion program to protect agriculture from exotic pests. Inspection of incoming shipments at United Postal Service and Federal Express as well as the garden centers of retail businesses is combined with inspections of local nurseries as part of the effort to prevent harmful pests from gaining a foothold in local agriculture. Inspections of incoming beehives for hitchhiking pests during the spring pollination season also play an important role in this effort.

Weights and Measures – To ensure “Equity in the Marketplace”, the Department annually inspects approximately 9,000 devices for accuracy. These devices include gas pumps, taximeters, vehicle scales, livestock scales, jewelry scales, Liquefied Petroleum Gas meters, and scales in the checkout lane of the grocery store. The Department also responds to concerns from the public on such issues as fuel quality and pricing accuracy.

Standardization, Quality and Food Safety - The Department provides inspection services for industry at the production and retail level to assure that fruits and vegetables meet quality standards. The Department also provides these inspection services to the egg industry to ensure that the eggs being sold meet both quality and food safety requirements. The Department also inspects and issues certification to the producers who supply product to the County’s farmers markets.

The walnut industry continues to grow in size and value which make walnuts a desired target for thieves. The Department worked with the Agricultural Advisory Board, the walnut industry and other County agencies to develop the Purchase and Sale of Walnuts ordinance to address the walnut theft issue. The Board of Supervisors approved the ordinance in July 2014. In the fall of 2014, the Department will implement the newly enacted ordinance. It is anticipated the ordinance will decrease the amount of walnuts stolen directly from farmers’ orchards by restricting the season when non-processing walnut buyers can purchase walnuts and requiring a more detailed and traceable proof of ownership for smaller quantities of walnuts (less than 2,000 lb. lots).

The Department is budgeting funds for an extra help Software Developer to complete a list of projects. The funding for this position would come from prior year net county cost savings. The list of projects includes: automating the annual Device Registration billing process to allow automated invoicing; developing an electronic export certification record tracking system to provide electronic collection for services and billing information at the time of inspection; overhauling the current “Daily Activity System” that is used to track all staff activities and compile state reports; creating an electronic entry of Notice of Intent (NOI) to apply pesticides to replace the current manual system; creating an internet based request system for export certification appointments for industry use; establishing a means of making

Continuing Education (CE) credits searchable by permit number on the Agricultural Commissioner's website, thus allowing growers the ability to determine if they have the required number of CE hours to obtain a permit; mapping of commercial scales and measuring devices that would be available to inspectors in the field; building a California Highway Patrol (CHP) scale database with automated reporting and invoicing; creating an interface linking the Pesticide Permit scheduling system to the automated appointment reminder calling system, eliminating double entry of information; and establishing an interactive, online resource to allow growers to quickly determine buffer zones around schools and provide the grower with school contact information.

In cooperation with General Services Agency Fleet Services, the Department is requesting to replace two service vehicles. These 10 year old vehicles have over 103,000 miles and are experiencing an increase in maintenance costs. The Department has also budgeted \$5,000 to install electronic locks on the shop doors. The electronic locks will tie into the Stanislaus Building's existing electronic lock system and will eliminate the need for Inspectors to be issued keys. In addition, the Department is budgeting \$6,000 to purchase a trailer which will be used to transport a five foot by five foot platform scale, used for gravimetric testing of liquid meters such as oil meters, to various inspection sites around the county. The Department is planning to use net county cost savings to purchase these items.

Departments that achieved savings in appropriations are able to carry forward 100% of their unused net county cost savings from prior fiscal years and 75% of their 2013-2014 net county cost savings. The Agricultural Commissioner is requesting an increase in appropriations of \$1,191,442 to reflect the carry forward of net county costs savings earned in prior fiscal years. The Department will use \$199,407 of prior year savings for vehicle replacements, electronic locks, purchase a trailer, extra help Software Developer and to maintain the existing level of service in Fiscal Year 2014-2015. These funds will be used in future years to fund the cost of an extra help part-time Software Developer, meet anticipated cost increases associated with health insurance, staffing, retirement costs, replacement of vehicles and improving customer access to services.

#### **STAFFING IMPACTS**

Total current authorized positions— 35

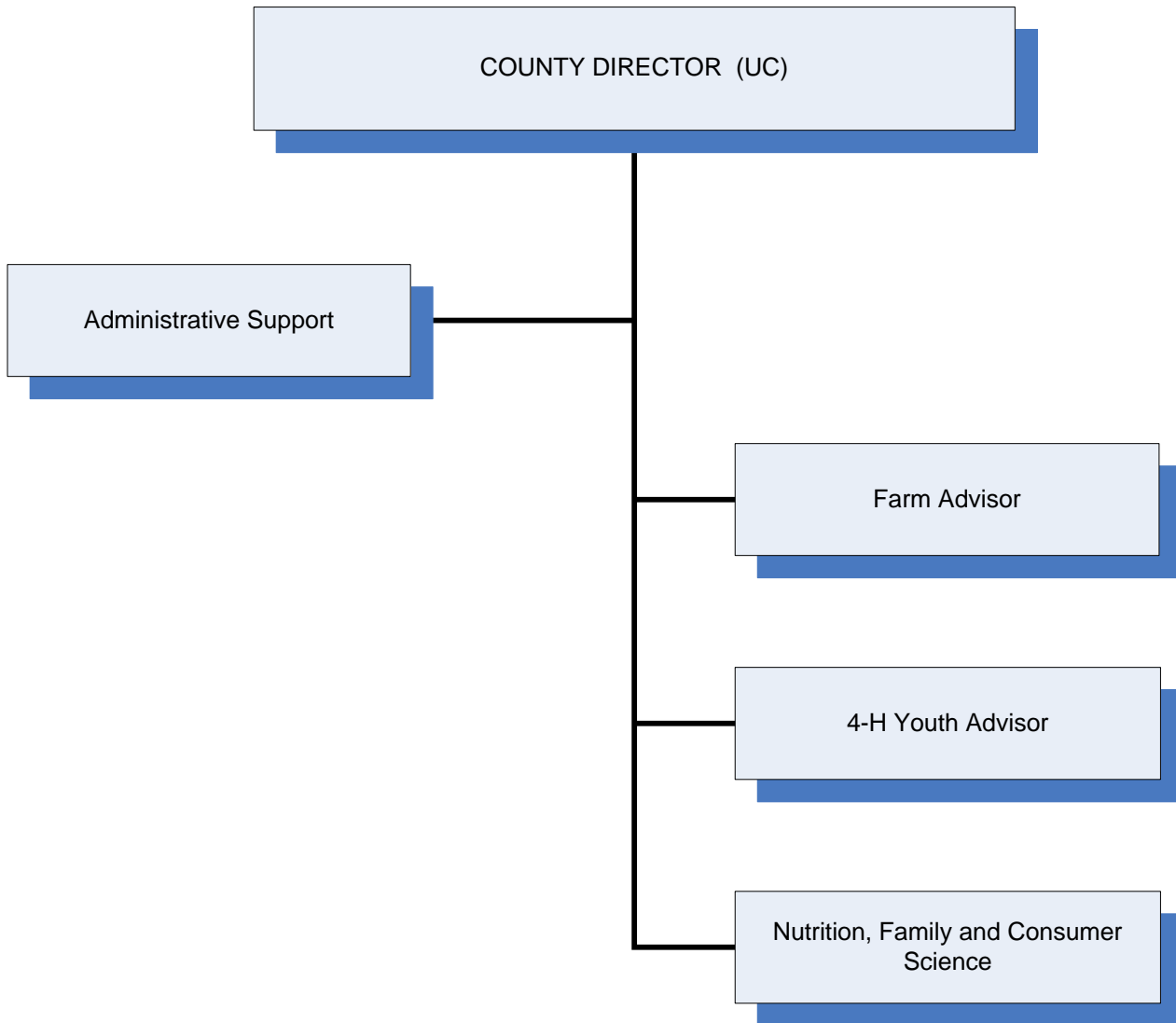
There are no recommended changes to the current level of staffing.

#### **RECOMMENDED FINAL BUDGET**

It is recommended that a budget of \$5,306,209 be approved for the Agricultural Commissioner. This budget is funded from \$3,210,047 in estimated department revenue and a \$2,096,162 contribution from the General Fund.

# STANISLAUS COUNTY COOPERATIVE EXTENSION

---



Revised April 2006

**STANISLAUS COUNTY, CALIFORNIA**

**Fiscal Year 2014-2015**

**PUBLIC RESOURCES**

**Agricultural Education**



**UNIVERSITY OF CALIFORNIA  
COOPERATIVE EXTENSION  
Theresa Spezzano, UC  
Cooperative  
Extension County Director**

**BUDGET AT A GLANCE**

Gross Costs	\$508,314
Total Revenue	\$6,500
Fund Balance/Retained Earnings	\$16,892
<b>Net County Cost</b>	<b>\$484,922</b>
Total Recommended Staffing	4
% Funded by Local Discretionary Funds	95.4%

**MISSION STATEMENT**

To develop and deliver research-based information to the people of Stanislaus County in the areas of agriculture and natural resources, 4-H youth development, and family and consumer sciences which supports the continued economic viability of the agricultural industry, a safe and reliable food supply, clean air and water and healthy communities.

**ACCOMPLISHMENTS AND OBJECTIVES**

University of California (UC) Cooperative Extension will continue to focus on identifying current or new unsolved agriculture industry problems, as well as research and education programs that emphasize economic and environmental improvement. These priorities are important in UC Cooperative Extension programs that seek to ensure the viability and sustainability of the County's agriculture as well as improve the health and welfare of its residents.

The Accomplishments of 2013-2014 and Objectives for the 2014-2015 Fiscal Year for the University of California Cooperative Extension include:

<b>FISCAL YEAR 2013-2014 ACCOMPLISHMENTS</b>	<b>FISCAL YEAR 2014-2015 OBJECTIVES</b>
<ul style="list-style-type: none"> <li>◆ Developed and presented a nitrogen management course to establish a well-educated group of paraprofessionals who will monitor and help improve fertility practices among farmers and reduce the risk of ground water contamination in Stanislaus County.</li> <li>◆ Implemented an almond variety trial to evaluate 30 new varieties, many of which are self-fruitful and will require far fewer bees to produce high yields compared to standard almond varieties. Most varieties are from the UC Davis and U.S. Department of Agriculture (USDA) breeding programs.</li> <li>◆ Continued to monitor several existing rootstock trials which will enable fruit and nut tree growers to grow orchards in locations challenged with poor soil and/or water, soil</li> </ul>	<ul style="list-style-type: none"> <li>◆ Begin a process to import and quarantine several almond varieties from Europe to evaluate their performance under Stanislaus County growing conditions.</li> <li>◆ Evaluate new horticultural and farming methods to improve current practices.</li> <li>◆ Develop and present an introductory course for new almond growers.</li> <li>◆ Complete research projects on silage management.</li> <li>◆ Secure additional funding for future applied research on dairies.</li> </ul>

FISCAL YEAR 2013-2014 ACCOMPLISHMENTS	FISCAL YEAR 2014-2015 OBJECTIVES
<p>borne diseases and without fumigation.</p> <ul style="list-style-type: none"> <li>◆ Maintained long-term almond and walnut pruning, tree density and fertility trials which will help in the continued success of local fruit and nut tree industries.</li> <li>◆ Continued bi-monthly integrated pest management training sessions for tree and vine pest control advisors.</li> <li>◆ Began monitoring for brown Marmorated stink bugs, an invasive pest, in Stanislaus County peach orchards.</li> <li>◆ Secured funding for two research projects on silage management.</li> </ul>	

**BUDGETS WITHIN THE UNIVERSITY OF CALIFORNIA COOPERATIVE EXTENSION INCLUDE:**

- ◆ University of California Cooperative Extension
- ◆ UC Cooperative Extension Farm and Home Advisors Research Trust

**STANISLAUS COUNTY, CALIFORNIA**  
**Fiscal Year 2014-2015**

---

**PUBLIC RESOURCES**  
**Agricultural Education**



**UNIVERSITY OF CALIFORNIA COOPERATIVE EXTENSION**  
Budget Unit 0100 0021100  
General Fund

**SERVICES PROVIDED**

The University of California (UC) Cooperative Extension in Stanislaus County is part of a statewide system of off-campus education, based on a three-way partnership among the County Board of Supervisors, the University of California and the United States Department of Agriculture. UC Cooperative Extension brings the resources of the University of California to Stanislaus County residents, and conducts applied research and education programs tailored to their needs. Programs are conducted in the areas of agriculture and natural resources, 4-H youth development and family and consumer sciences. Most of the agricultural research is conducted in local field trials with local producers and growers. The information is delivered to clientele via classroom and in-field workshops, seminars, web sites, publications, telephone calls, office visits, on-farm consultations, email, television and radio programs, newsletters and articles written for newspapers and magazines.

The University of California provides funding for fourteen UC Cooperative Extension employees (eight advisors and six paraprofessionals) conducting programs in the Stanislaus County UC Cooperative Extension Office. Six advisors are responsible for programs in Agriculture and Natural Resources, and two advisors and six paraprofessionals conduct programs in the human resources area (4-H Youth Development and Nutrition, Family and Consumer Sciences). The advisors support all of their own applied research and educational projects with extramural funds provided by a variety of grants from public agencies, grower associations, foundations, and private donors. Grant funds are used to hire research assistants and to purchase computers, lab supplies, field supplies, specialized equipment, and other items critical to conducting research. Stanislaus County provides funding for the Department's operational expenses, including the facilities that house UC Cooperative Extension, vehicles and support staff that work with the UC Cooperative Extension advisors and paraprofessionals in program delivery.

<b>Cooperative Extension</b>					
<b>Classification</b>	<b>2012-2013 Actual</b>	<b>2013-2014 Actual</b>	<b>2014-2015 Requested Final Budget</b>	<b>2014-2015 Recommended Adjustments</b>	<b>2014-2015 Recommended Final Budget</b>
Taxes	\$0	\$0	\$0	\$0	\$0
Licenses, Permits, Franchises	\$0	\$0	\$0	\$0	\$0
Fines, Forfeitures, Penalties	\$0	\$0	\$0	\$0	\$0
Revenue from use of Assets	\$2,000	\$750	\$0	\$0	\$0
Intergovernmental Revenue	\$0	\$0	\$0	\$0	\$0
Charges for Service	\$2,889	\$4,889	\$4,000	\$0	\$4,000
Miscellaneous Revenue	\$2,400	\$3,775	\$2,500	\$0	\$2,500
Other Financing Sources	\$0	\$0	\$0	\$0	\$0
<b>Total Revenue</b>	<b>\$7,289</b>	<b>\$9,414</b>	<b>\$6,500</b>	<b>\$0</b>	<b>\$6,500</b>
Salaries and Benefits	\$226,902	\$238,918	\$232,460	\$101,398	\$333,858
Services and Supplies	\$7,726	\$10,425	\$19,630	\$0	\$19,630
Other Charges	\$106,316	\$110,918	\$117,023	\$0	\$117,023
Fixed Assets					
Equipment	\$0	\$0	\$20,911	\$0	\$20,911
Other Financing Uses	\$6,057	\$6,588	\$0	\$0	\$0
Equity	\$0	\$0	\$0	\$0	\$0
Intrafund	\$0	\$45	\$0	\$0	\$0
Contingencies	\$0	\$0	\$0	\$0	\$0
<b>Gross Costs</b>	<b>\$347,001</b>	<b>\$366,894</b>	<b>\$390,024</b>	<b>\$101,398</b>	<b>\$491,422</b>
Fund Balance	\$0	\$0	\$0	\$0	\$0
<b>Net County Cost</b>	<b>\$339,712</b>	<b>\$357,480</b>	<b>\$383,524</b>	<b>\$101,398</b>	<b>\$484,922</b>

## PROGRAM DISCUSSION

At the requested level of funding, the Department can provide a consistent level of service in Fiscal Year 2014-2015. The Department in partnership with the University of California will continue to search out practical, researched-based solutions to local industry problems. The Department continues its efforts in developing more productive crop varieties and monitoring for invasive pests. The Nutrition, Family and Consumer Sciences program continues to provide consumers with information in food and nutrition, food safety, food preservation, and money management. The 4-H Youth Development program provides a wide variety of activities and learning opportunities for its young members.

The Department has been unable to fully implement its research and educational programs due to the loss of the Agricultural Assistant during previous budget reductions. In addition to the research and educational programs the Department provides to its customers, the Department is also responsible for maintaining a small demonstration orchard and vineyard at the Stanislaus County Agricultural Center. The loss of the Agricultural Assistant position has also resulted in the Department's inability to properly maintain the demonstration orchard and vineyard. The duties associated with this position have been performed by student interns hired with farm advisors' grant funds. The grant funding is limited and insufficient in providing adequate hours during the week for interns to properly perform the duties required. The Department is requesting a \$58,004 General Fund contribution increase to fund one Agricultural Assistant II position.

Two additional University of California Farm Advisors are expected to join the Department within the next two years. The additional positions will increase the workload of the administrative support staff who are currently struggling to meet the needs of the current farm advisors. The Department is currently working with Alliance Worknet to fulfill the need for extra help. However, this help is short-term and contingent upon the participants gaining employment or leaving the program. The Department

anticipates hiring an extra-help part-time Administrative Clerk II in Fiscal Year 2014-2015. The Department will utilize a portion of its net county cost savings to fund this position.

In cooperation with General Services Agency Fleet Services, the Department is requesting to replace a 1997 Ford truck. This vehicle is routinely used by farm advisors to conduct research work in orchard fields and to attend customer farm calls. This 17 year old vehicle has over 103,000 miles and is currently experiencing an increase in maintenance and repair costs. The Department will utilize a portion of its net county cost savings to purchase this vehicle.

Departments that achieved savings in appropriation are able to carry forward 100% of their unused net county cost savings from prior fiscal years and 75% of their 2013-2014 net county cost savings. University of California Cooperative Extension is requesting an increase in appropriations of \$43,394 to reflect the carry forward of net county costs savings earned in prior fiscal years. The Department is planning to use \$43,394 to support budgeted operating costs.

The Department's current hours of operation are Monday through Friday from 8:00 am to 5:00 pm. The Department remains open during the lunch hour. The Department receives the most foot traffic during the hours of 8:00 am to 4:30 pm. During the hours of 4:30 pm to 5:00 pm, the Department receives an average of two customers per month. The Department is requesting to change its hours of operation from Monday through Friday 8:00 am to 5:00 pm to Monday through Friday 8:00 am to 4:30 pm. This change in hours will better serve our customers during the times when the Department experiences the most foot traffic and will coincide with the Ag Commissioner's current office hours.

#### **STAFFING IMPACTS**

The Department is requesting to add one new Agricultural Assistant II position. The Agricultural Assistant works closely with the University of California advisors and is crucially important to the establishment and maintenance of field research projects. This position also plays an important role in educational activities such as field days, short courses, and meetings. Due to budget constraints in the previous years, the Department had to delete a filled Agricultural Assistant position which represented a 25% reduction in staff. The loss of this position has significantly reduced the advisors' ability to conduct extensive and active field research programs.

Total current authorized positions— 3

#### **RECOMMENDED FINAL BUDGET**

It is recommended that a budget of \$491,422 be approved for Cooperative Extension. This budget is funded from \$6,500 in estimated department revenue and a \$484,922 contribution from the General Fund. The Department anticipates the need for approximately \$43,394 of prior year General Fund net county cost savings to fully fund the projected 2014-2015 budget.

General Fund Departments received a FY 2014-2015 issued base budget adjusted to the equivalent of the Funded Service Level cost of all current programs and allocated positions as approved by the Board of Supervisors. Negotiated increases approved by the Board have also been included in this General Fund allocation level which is reflected as Net County Cost on the Summary Budget Schedule.

It is recommended to add one new Agricultural Assistant II position.

Total recommended authorized positions— 4



**STANISLAUS COUNTY, CALIFORNIA**  
**Fiscal Year 2014-2015**  
**PUBLIC RESOURCES**  
**Agricultural Education**



**UC COOPERATIVE EXTENSION—FARM AND HOME ADVISORS RESEARCH TRUST**

Budget Unit 1766 0021401  
 Special Revenue Fund

**SERVICES PROVIDED**

The Farm and Home Advisors Research Trust Fund provides support to UC Cooperative Extension’s efforts to provide programs in agriculture and natural resources, 4-H youth development and nutrition, family and consumer sciences, and community resource development.

**FUND/CASH BALANCE**

As of July 1, 2014, this fund had a positive fund balance of \$49,234 compared to the July 1, 2013, positive balance of \$52,843. The Cooperative Extension-Farm and Home Advisors Research Trust are funded by donations and grants that vary from year to year. Cash is tracking similar to fund balance.

<b>Cooperative Extension - Farm &amp; Home Advisors Res</b>					
<b>Classification</b>	<b>2012-2013 Actual</b>	<b>2013-2014 Actual</b>	<b>2014-2015 Requested Final Budget</b>	<b>2014-2015 Recommended Adjustments</b>	<b>2014-2015 Recommended Final Budget</b>
Taxes	\$0	\$0	\$0	\$0	\$0
Licenses, Permits, Franchises	\$0	\$0	\$0	\$0	\$0
Fines, Forfeitures, Penalties	\$0	\$0	\$0	\$0	\$0
Revenue from use of Assets	\$0	\$0	\$0	\$0	\$0
Intergovernmental Revenue	\$0	\$0	\$0	\$0	\$0
Charges for Service	\$0	\$0	\$0	\$0	\$0
Miscellaneous Revenue	\$0	\$0	\$0	\$0	\$0
Other Financing Sources	\$0	\$0	\$0	\$0	\$0
<b>Total Revenue</b>	<b>\$0</b>	<b>\$0</b>	<b>\$0</b>	<b>\$0</b>	<b>\$0</b>
Salaries and Benefits	\$0	\$0	\$0	\$0	\$0
Services and Supplies	\$7,037	\$3,610	\$16,892	\$0	\$16,892
Other Charges	\$0	\$0	\$0	\$0	\$0
Fixed Assets	\$0	\$0	\$0	\$0	\$0
Other Financing Uses	\$0	\$0	\$0	\$0	\$0
Equity	\$0	\$0	\$0	\$0	\$0
Intrafund	\$0	\$0	\$0	\$0	\$0
Contingencies	\$0	\$0	\$0	\$0	\$0
<b>Gross Costs</b>	<b>\$7,037</b>	<b>\$3,610</b>	<b>\$16,892</b>	<b>\$0</b>	<b>\$16,892</b>
<b>Fund Balance</b>	<b>\$7,037</b>	<b>\$3,610</b>	<b>\$16,892</b>	<b>\$0</b>	<b>\$16,892</b>
<b>Net County Cost</b>	<b>\$0</b>	<b>\$0</b>	<b>\$0</b>	<b>\$0</b>	<b>\$0</b>

**PROGRAM DISCUSSION**

At the requested level of funding, the Department can maintain the current level of service.

**STAFFING IMPACTS**

Total current authorized positions— 0

**RECOMMENDED FINAL BUDGET**

It is recommended that a budget of \$16,892 be approved for Cooperative Extension – Farm Home Extension. This budget is funded from \$16,892 in estimated departmental fund balance.