

**THE BOARD OF SUPERVISORS OF THE COUNTY OF STANISLAUS
BOARD ACTION SUMMARY**

DEPT: Chief Executive Office

BOARD AGENDA:7.1
AGENDA DATE: March 16, 2021

SUBJECT:

Acceptance of an Update Related to the 2019 Novel Coronavirus (COVID-19) Emergency and Essential Services in Stanislaus County and Direct the Chairman of the Board to Issue a Letter to the Governor of California to Address Local Concerns About the Delay in the Return Date for Children to be at School in Stanislaus County

BOARD ACTION AS FOLLOWS:

RESOLUTION NO. 2021-0096

On motion of Supervisor Withdraw, Seconded by Supervisor Grewal
and approved by the following vote,

Ayes: Supervisors: B. Condit, Withdraw, Grewal, C. Condit and Chairman Chiesa

Noes: Supervisors: None

Excused or Absent: Supervisors: None

Abstaining: Supervisor: None

- 1) Approved as recommended
- 2) Denied
- 3) Approved as amended
- 4) Other:

MOTION:

ATTEST: Elizabeth A. King
ELIZABETH A. KING, Clerk of the Board of Supervisors

File No.

**THE BOARD OF SUPERVISORS OF THE COUNTY OF STANISLAUS
AGENDA ITEM**

DEPT: Chief Executive Office

BOARD AGENDA:7.1
AGENDA DATE: March 16, 2021

CONSENT

CEO CONCURRENCE: YES

4/5 Vote Required: No

SUBJECT:

Acceptance of an Update Related to the 2019 Novel Coronavirus (COVID-19) Emergency and Essential Services in Stanislaus County and Direct the Chairman of the Board to Issue a Letter to the Governor of California to Address Local Concerns About the Delay in the Return Date for Children to be at School in Stanislaus County

STAFF RECOMMENDATION:

1. Accept an update related to the 2019 Novel Coronavirus (COVID-19) Emergency and essential services in Stanislaus County.

2. Authorize the Chairman of the Board to send a letter to the Governor of California addressing concerns specific to State COVID metrics delaying middle and high school youth to return to in-person learning in Stanislaus County.

DISCUSSION:

On March 4, 2020, Governor Gavin Newsom issued a Proclamation of a State of Emergency regarding COVID-19. The County issued a Proclamation of a Local Emergency on March 11, 2020, and a Resolution of the Board of Supervisors of the County of Stanislaus, Ratifying the Declarations of Local Health Emergency and Local Emergency Proclamation on March 17, 2020. COVID-19 affects the entire State; therefore, the measures necessary to preserve and protect the public health within the County have been prescribed by the State Public Health Officer, the California Department of Public Health, and by orders issued by the Governor.

In the year since these orders came into effect, Stanislaus County Public Health and Office of Emergency Services staff have continuously provided regular updates on the COVID-19 emergency to the Board of Supervisors. This update is provided in the same manner, with a presentation on the latest statistics, emergency efforts, and vaccination progress, focusing on dashboard metrics provided on the Stanislaus County Public Health website.

Local progress in meeting State-identified thresholds to move from the purple tier to the red tier has not been realized with the speed anticipated by the County Emergency Operations team. While under State guidance, schools have already had the opportunity to offer in-person learning for students in Kindergarten through 6th grade, students in grades 7 – 12 must wait until the local adjusted case rate meets the red tier metric of less than 7 cases per 100,000 for 2 weeks. The current plateau in COVID-19 case rates has had the immediate effect of delaying the planned return to modified in-person education, previously targeted for much of Stanislaus County's middle and high school students beginning Monday, March 15, 2021. This delay has been disappointing for the entire community.

Under the most recent State guidance the County's current adjusted case rate of 13.6 per 100,000 (as of March 9, 2021) meets the threshold for youth sports to begin but does not allow for in-person education. In light of multiple negative impacts to school-age youth from the inability to return to the classroom, along with restrictions affecting local business operations, and overall delays in moving the County towards recovery and a return to vitality, staff request authority and direction for the Chairman of the Board to send a letter to the Governor of California identifying the local concerns, and to specifically request the ability for the youth in Stanislaus County to return to in-person education, consistent with the policies, plans and guidelines developed by the various school districts in compliance with State guidance, to provide a safe learning environment for our youth.

County staff have drafted a sample letter with Dr. Julie Vaishampayan, Public Health Officer for consideration. A copy of the draft letter is attached to this agenda item.

POLICY ISSUE:

The Board of Supervisors is asked to consider the staff report and authorize the Chairman of the Board to issue a letter of concern to the Governor of California.

FISCAL IMPACT:

There is no fiscal impact associated with the staff recommendations.

BOARD OF SUPERVISORS' PRIORITY:

Approval of the recommended actions supports the Board of Supervisors' priorities of *Supporting Community Health, Developing a Healthy Economy, and Promoting First-Rate Learning* by providing information for the public on the status of COVID-19 in the County, and advocating for local flexibility for schools to re-open grades 7 – 12 for in-person instruction.

STAFFING IMPACT:

There is no staffing impact associated with these recommendations; the Chairman of the Board and staff will issue the letter of concern.

CONTACT PERSON:

Jody Hayes, Chief Executive Officer

(209) 525-6333

ATTACHMENT(S):

1. Letter to Governor



BOARD OF SUPERVISORS

Buck Condit, District 1
Vito Chiesa, District 2
Terry Withrow, District 3
Mani Grewal, District 4
Chance A. Condit, District 5

1010 10th Street
Modesto, CA 95354
Phone: 209-525-4494 Fax 209-525-4420

March 16, 2021

The Honorable Gavin Newsom
State Capitol Building, 1st Floor
Sacramento, CA 95814

RE: COVID-19 and School Closures

Dear Governor Newsom,

One year ago this week, Stanislaus County joined other communities throughout California and declared a local emergency in response to COVID-19. Over the last twelve months, we have communicated various requests to your office to advocate for issues in support of our community. We thank you for the consideration you have provided to Stanislaus County, recognizing the unprecedented level of advocacy and outreach from all local governments over this last year.

Our request at this moment reflects the most critical issue of public policy we have faced during the pandemic. Simply put, we need to provide all children the option for in-person education now. Stanislaus County is facing a unique challenge under the existing State guidelines, and we are hopeful you will recognize the need for immediate action under your authority.

At the onset of the pandemic, we took unprecedented actions at the State and local level that resulted in closing private businesses, reducing non-essential government services and removing children from in-person education. At that time, we were governing in an environment of tremendous uncertainty that justified immediate actions we knew would likely generate poor outcomes for the individuals and families we serve. Our emergency actions in early 2020 were premised on the unknown consequences of failing to take action. This was no easy time to be in elected office, and certainly not an easy time to serve as Governor of California.

One year ago, we had no certainty or data around COVID-19, including the very basic understanding of how the disease was transmitted and which segments of the population were most susceptible to poor outcomes or death. We had no information on potential vaccines and therapeutic treatments. We had mixed messages on the efficacy of masks. We believed (or hoped) that the most painful emergency actions would only be required to defeat a short-term surge. In summary, we made decisions that deeply impacted every member of our society based on what we didn't know.

We find ourselves one year later in a completely different environment to evaluate the decisions that remain before us.

We have significant research and data around the mode of transmission for COVID-19. *Physical distancing, hygiene, proper ventilation, personal health choices and adherence to mask policies are the first lines of defense.*

We know that negative outcomes from this disease are heavily skewed to our most vulnerable population. *77% of deaths in Stanislaus County have been individuals 65 and older.*

We know children do not transmit the disease or suffer negative health outcomes at the same level as adults. *Data to support this point is widely available and has been the focus of many of your recent public comments on school reopening.*

We know that keeping children out of school has a direct and immediate impact to all facets of our society, most notably the mental well-being of our youth. *Child hospitalizations for mental health crisis in our community were up 28% in 2020. Distance learning has contributed to an ever-increasing gap between disadvantaged communities of color and those with the means to better support their children during COVID-19.*

We know that schools can operate safely, even in an environment of moderate to high community transmission of COVID-19. *Numerous studies support this point, including our own data in Stanislaus County. Nearly all of our elementary schools have operated throughout the peak of our second wave of COVID-19 cases, with public health data showing less than 3% of school cases attributed to school transmission. Local schools have proven they can operate safely in an environment of moderate to high transmission, even prior to vaccine distribution.*

Most encouraging, we know that through the miracle of technology and ingenuity, vaccines and treatment therapeutics were developed and distributed to combat COVID-19 in record time. *Stanislaus County has been a leading community in our efforts to vaccinate the public with approximately 130,000 doses in arms and growing every day. We have been successful in distributing vaccines to all eligible populations, with priority clinics serving our education community in partnership with local school districts. We have also supported the implementation of monoclonal antibody treatments to avoid hospitalizations for our most vulnerable population. These are all “game-changing” developments that are just now coming online to make a difference in our community.*

With all of this information now available, we ask a very simple question. If you started from a blank slate today, blessed with the knowledge and advances we have gained over the last twelve months, would you decide to remove children from school?

This is the framework upon which we ask for your immediate action to reprioritize school reopening for all ages in relation to the Blueprint for a Safer Economy policy that is currently in place in California. Although our test positivity percentage and HPI percentage numbers are well within the Red and Orange Tiers, our case rate has abruptly plateaued at a level that may take weeks to meet the State criteria for further

opening. While we are confident that our case rates and hospitalizations will not return to the levels we experienced this winter, we do not know what types of case rates we can expect over the next several months during this next phase of the pandemic.

Our school districts have worked tirelessly for months to develop plans for reopening in conjunction with their labor partners and parents. Those plans are ready to implement across the entire community with your approval. The children of Stanislaus County are suffering every day they are not allowed to return to in-person education. As of today, many students in our community can play sports or plan a trip to Disneyland over spring break, but they cannot go to school.

We ask that you reflect on what we know today about COVID-19, and recognize the only reasonable conclusion to these questions. If we would not remove a child who is already attending school, how can we justify keeping any child who wants to go to school from that opportunity?

Thank you for your consideration and support of our efforts to allow in-person education for all grade levels in Stanislaus County.

Sincerely,



Vito Chiesa, Chairman
Stanislaus County Board of Supervisors



Julie Vaishampayan, MD, MPH, FIDSA
Stanislaus County Public Health Officer



Vaccinate Stanislaus

Together we can end the pandemic.



COVID-19 Update

Jody Hayes, Chief Executive Officer

Julie Vaishampayan, MD, MPH, Public Health Officer

Mary Ann Lilly-Tengowski, Managing Director, Health Services Agency

March 16, 2021



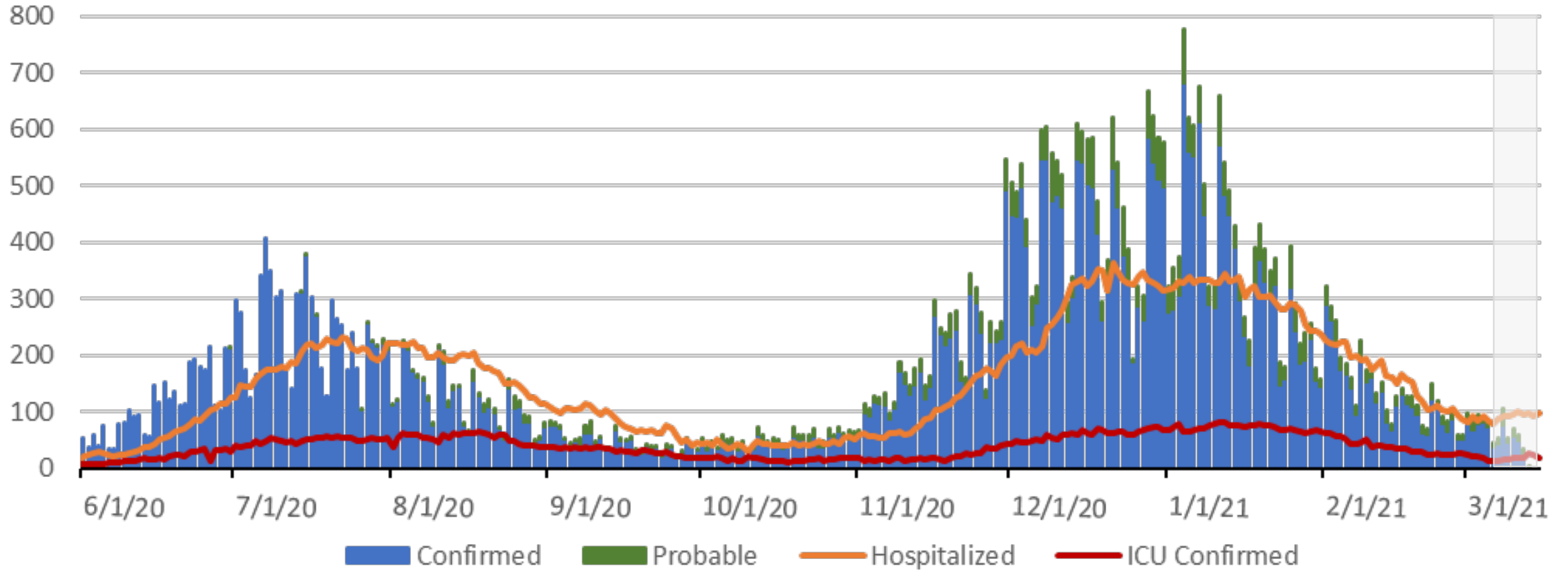
Vaccinate Stanislaus

Together we can end the pandemic.

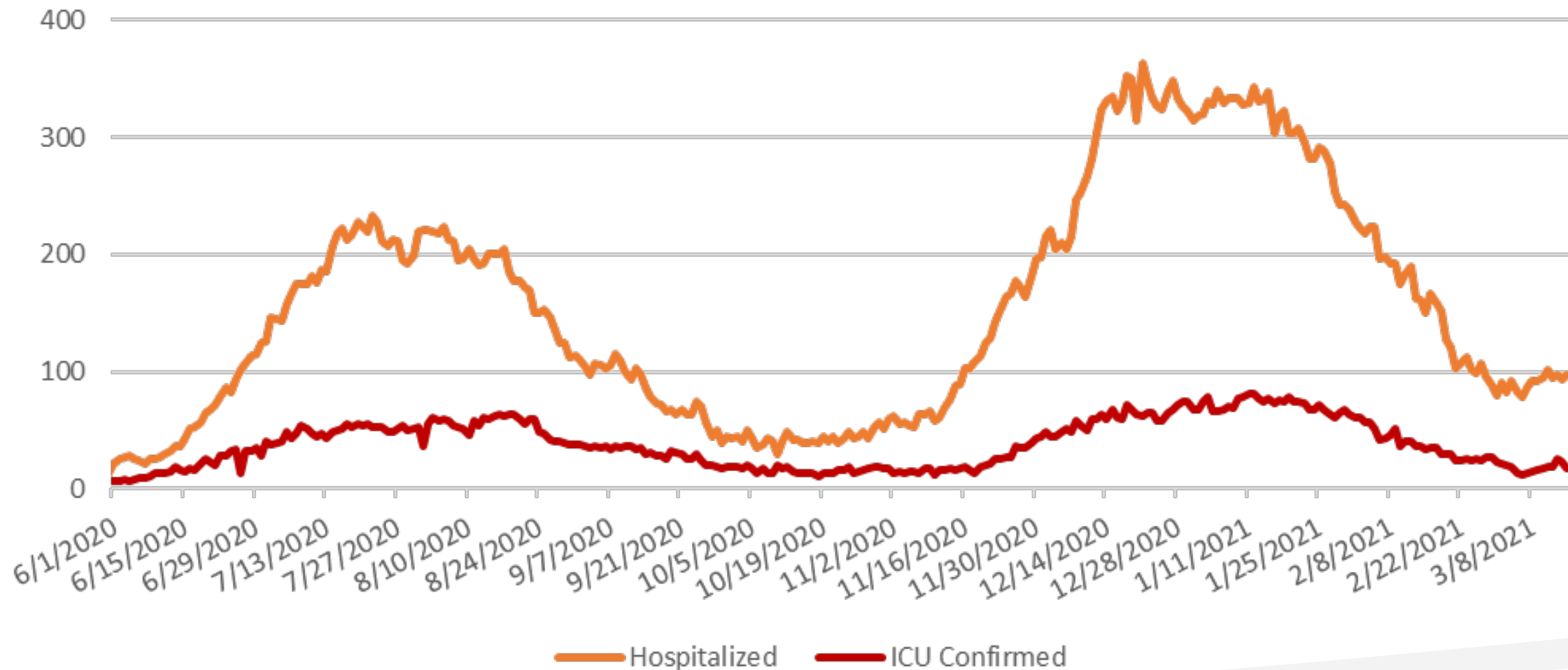


DATA

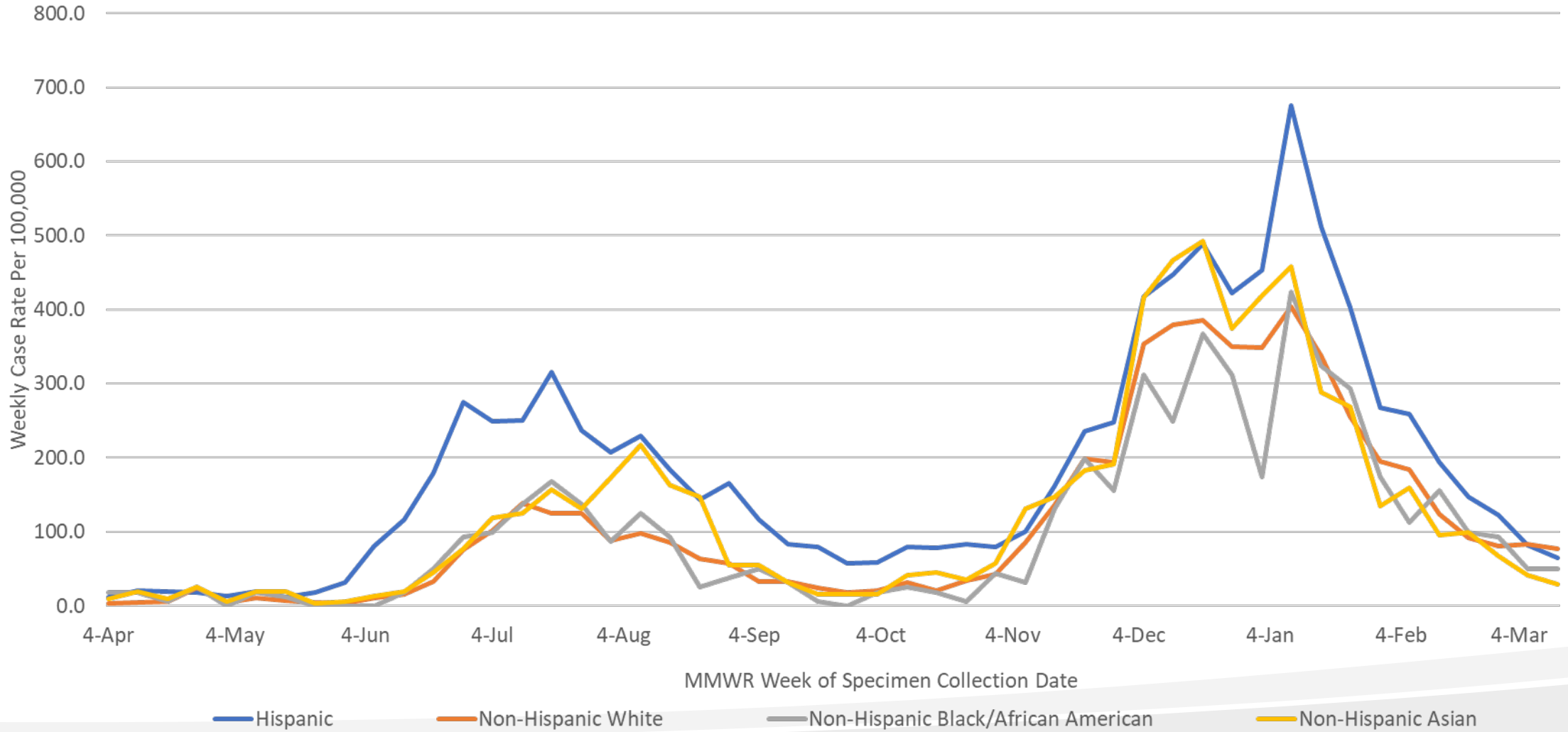
COVID-19 Confirmed and Probable Cases, Hospitalizations, and ICU



COVID-19 Total Hospitalization and ICU

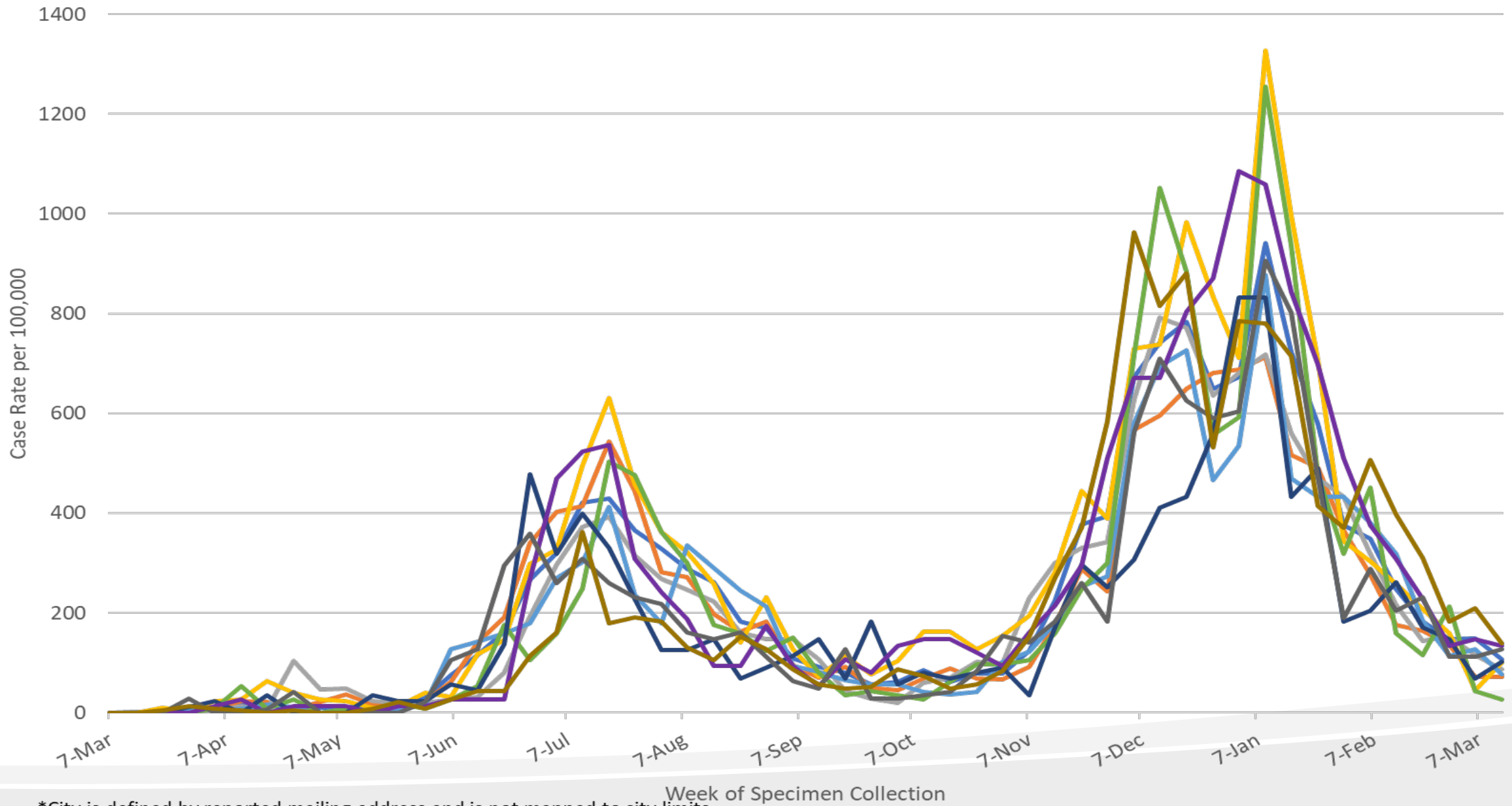


Stanislaus County Weekly COVID-19 Case Rates* Per 100,000 Residents by Race and Ethnicity



*Please note that 18% of cases do not have a race or ethnicity reported.

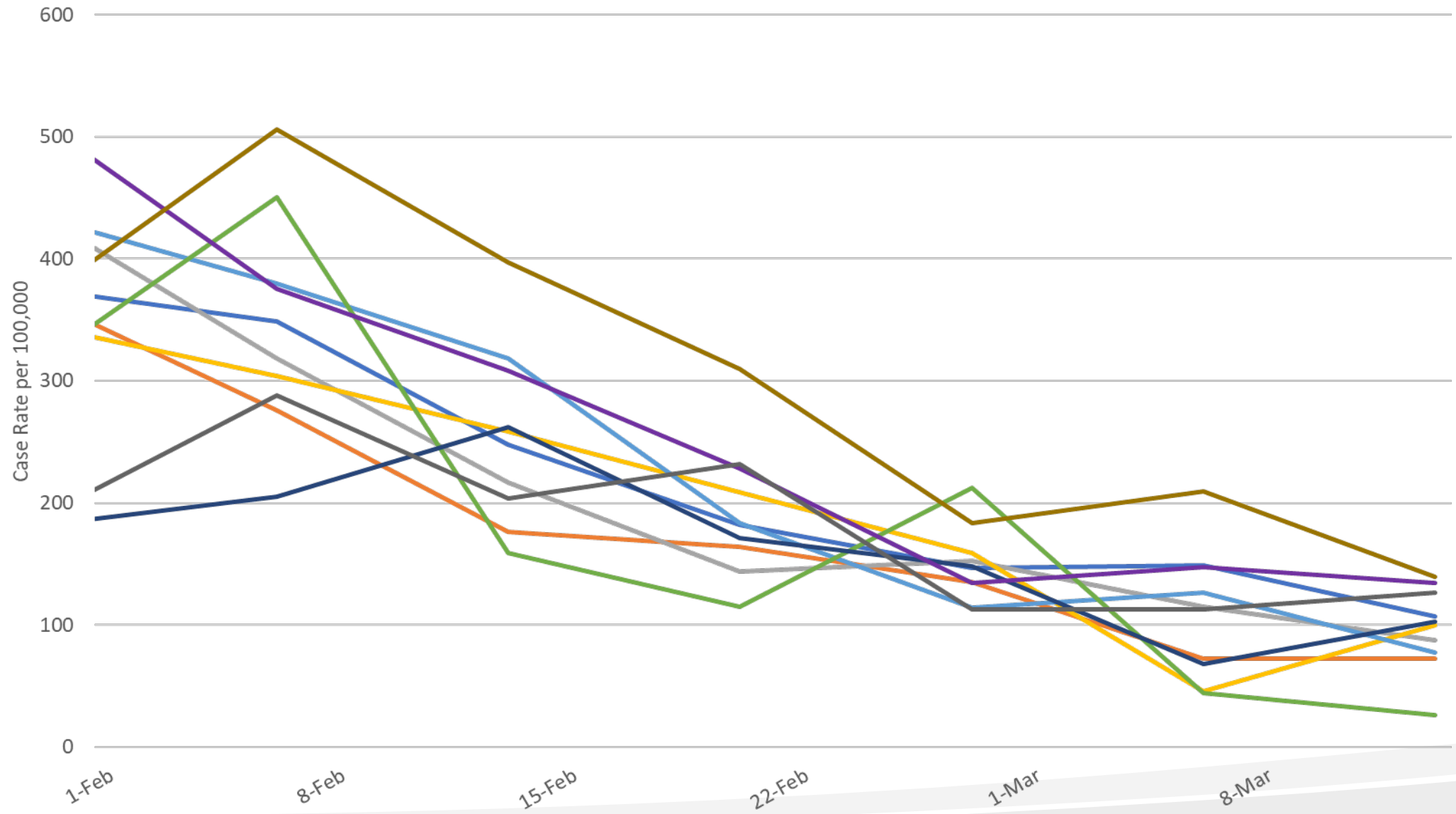
Weekly COVID-19 Case Rate per 100,000 by City*



*City is defined by reported mailing address and is not mapped to city limits

— Modesto — Ceres — Turlock — Patterson — Riverbank — Newman — Waterford — Hughson — Salida — Oakdale

Weekly COVID-19 Case Rate per 100,000 by City*



*City is defined by reported mailing address and is not mapped to city limits

Modesto Ceres Turlock Patterson Riverbank Newman Waterford Hughson Salida Oakdale



Vaccinate Stanislaus

Together we can end the pandemic.



Tier Update



Vaccinate Stanislaus
Together we can end the pandemic.

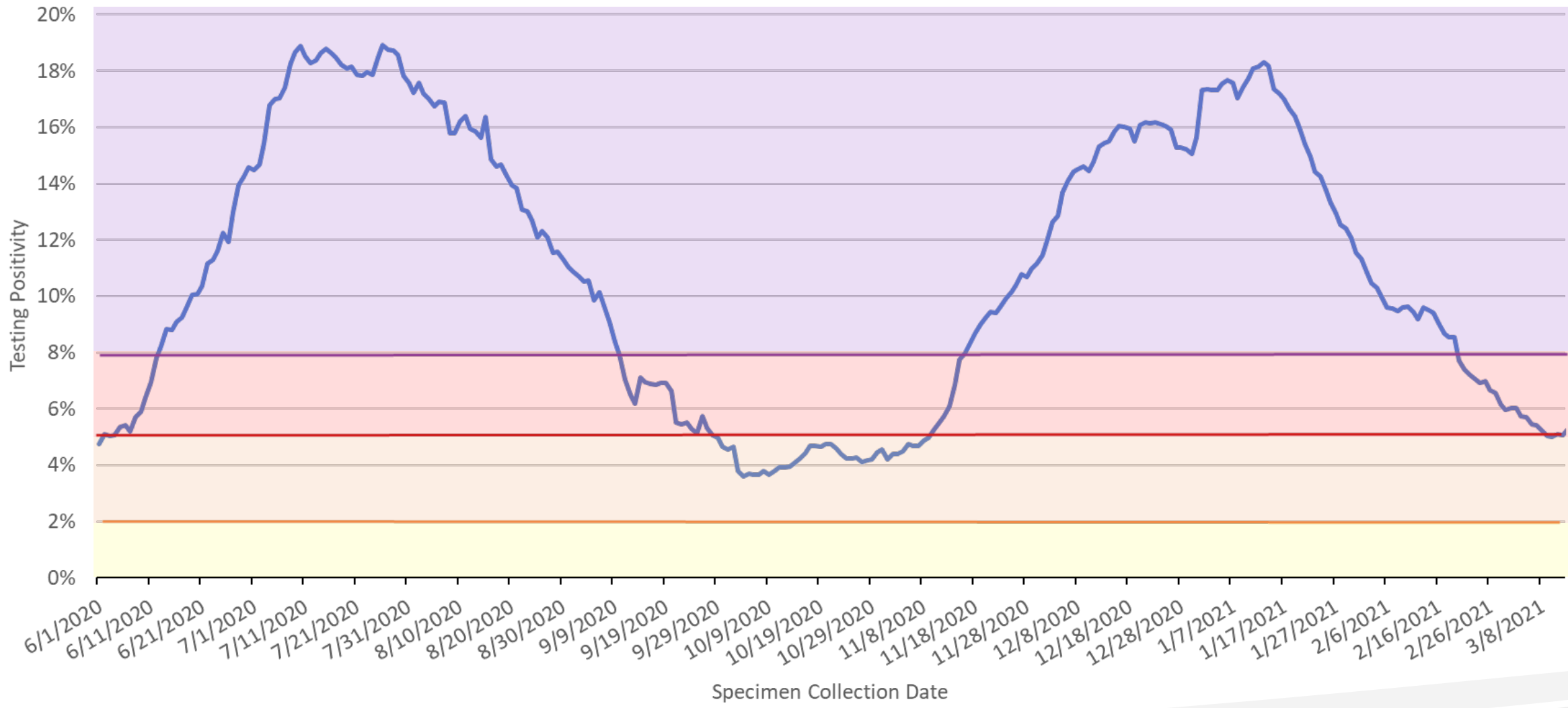
Three Measures

- **Unadjusted case rate (11.7)**
- **Percent positive tests (4.9%)**
- **Percent positive tests in lowest quartile healthy places index (4.7%)**
- **Test Volume (317.1 vs State median 320.5)**

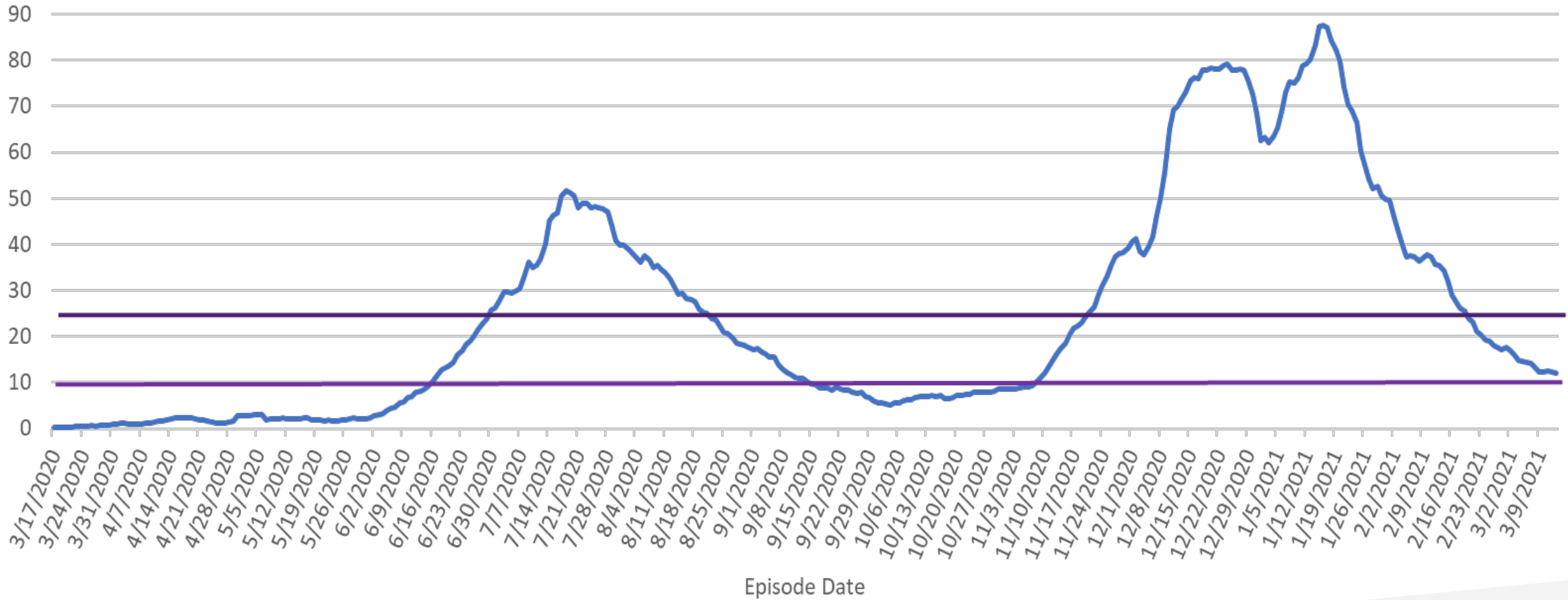
Tier 1 Widespread	Tier 2 Substantial	Tier 3 Moderate	Tier 4 Minimal
Case Rate >10	Case Rate 4-10	Case Rate 1-3.9	Case Rate <1
Positivity >8%	Positivity 5-8%	Positivity 2-4.9%	Positivity <2%

Accelerated Progression if Health Equity Quartile Test Positivity Rate Meets Threshold for Two Tiers Less Restrictive.

% Positivity Yield (7 Day Average, 7 Day Lag)



Daily Case Rate (7 Day Average, 7 Day Lag)





Vaccinate Stanislaus

Together we can end the pandemic.



Vaccine

What do we know?

- Doses in Stanislaus County as of Monday, March 15
 - Federal (Federal Pharmacy Partnership, FPP) – 12,152 administered
 - State (Multi-County Entity, MCE) – 55,800 received
 - Local – 122,070
- ~190,000 doses in the County



COVID-19: Vaccine Dashboard

Statewide



12,172,948 (77.5%) Doses administered
194,377 Average doses per day

4,088,185 (12.6%) People partially vaccinated
4,147,604 (12.8%) People fully vaccinated



1,918,851 Doses on hand
(10 days of inventory)



15,702,230 Doses Delivered

2,182,300 CDC Pharmacy Doses Delivered

See [Data Dictionary](#) for Details.

Doses Administered by County of Residence

County

(All) ▼



San Bernardino	472,802
Contra Costa	425,595
Sacramento	396,234
San Francisco	339,647
San Mateo	299,894
Ventura	260,597
Fresno	254,936
Sonoma	192,514
Kern	187,965
San Joaquin	169,323
Stanislaus	142,936
Placer	142,495
Santa Barbara	125,927
Solano	120,258
Marin	117,080

Data: 3/14/2021 11:59pm | Posted:
3/15/2021

MCE/LHJ/LTCF	Type	Total Doses on Hand
San Francisco	Local Health Jurisdiction	8,489
San Joaquin	Local Health Jurisdiction	46,835
San Luis Obispo	Local Health Jurisdiction	17,182
San Mateo	Local Health Jurisdiction	21,592
Santa Barbara	Local Health Jurisdiction	8,034
Santa Clara	Local Health Jurisdiction	42,519
Santa Cruz	Local Health Jurisdiction	4,365
Shasta	Local Health Jurisdiction	6,492
Sierra	Local Health Jurisdiction	310
Siskiyou	Local Health Jurisdiction	2,198
Solano	Local Health Jurisdiction	13,440
Sonoma	Local Health Jurisdiction	8,524
Stanislaus	Local Health Jurisdiction	12,165
Sutter	Local Health Jurisdiction	2,275
Sutter Health	Multi-County Entity	29,280
Tehama	Local Health Jurisdiction	4,579
Trinity	Local Health Jurisdiction	2,530
Tulare	Local Health Jurisdiction	30,737
Tulare	Local Health Jurisdiction	4,000



Vaccinate Stanislaus

Together we can end the pandemic.

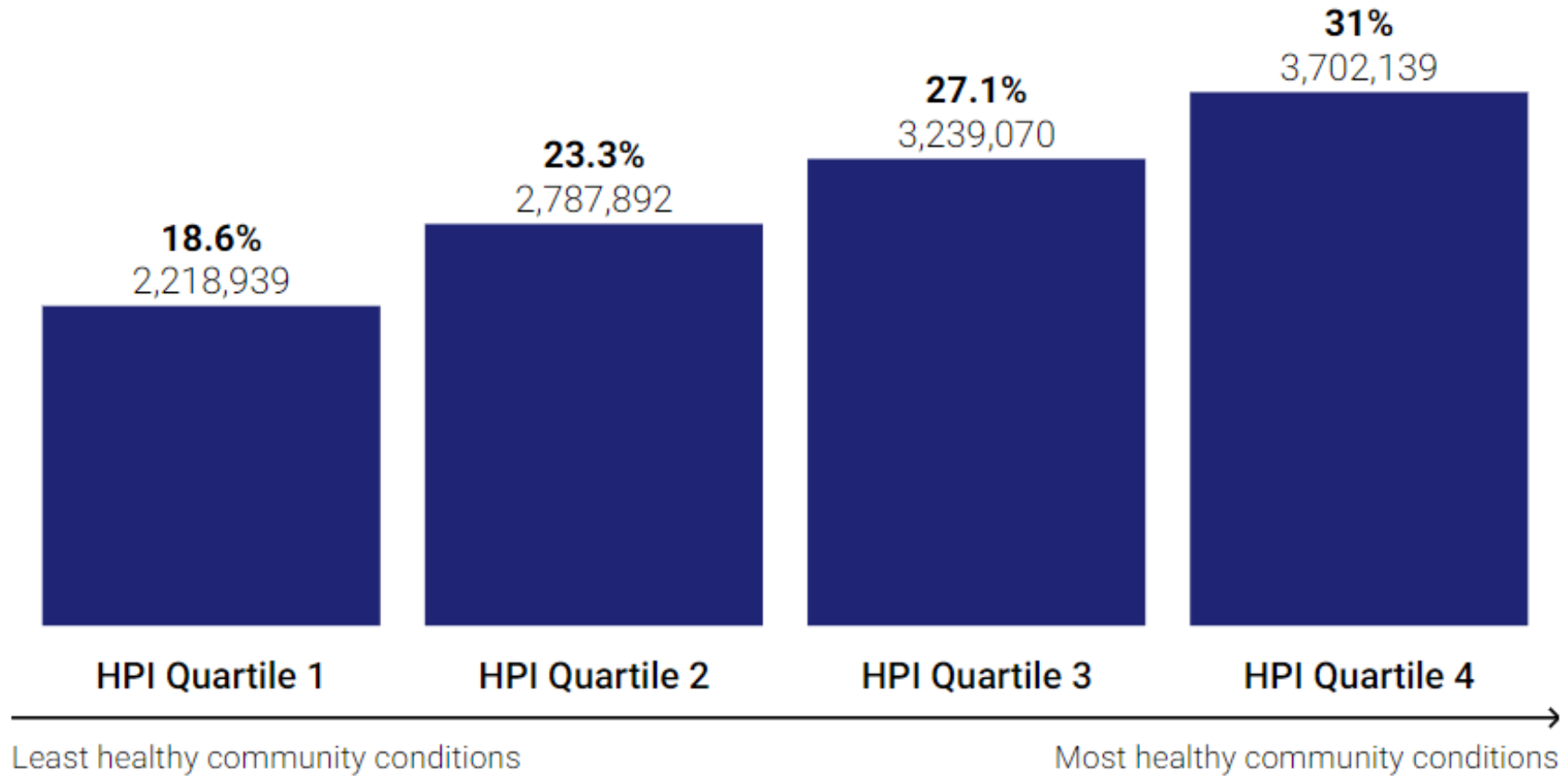


How allocation is calculated using
the Healthy Places Index (HPI)

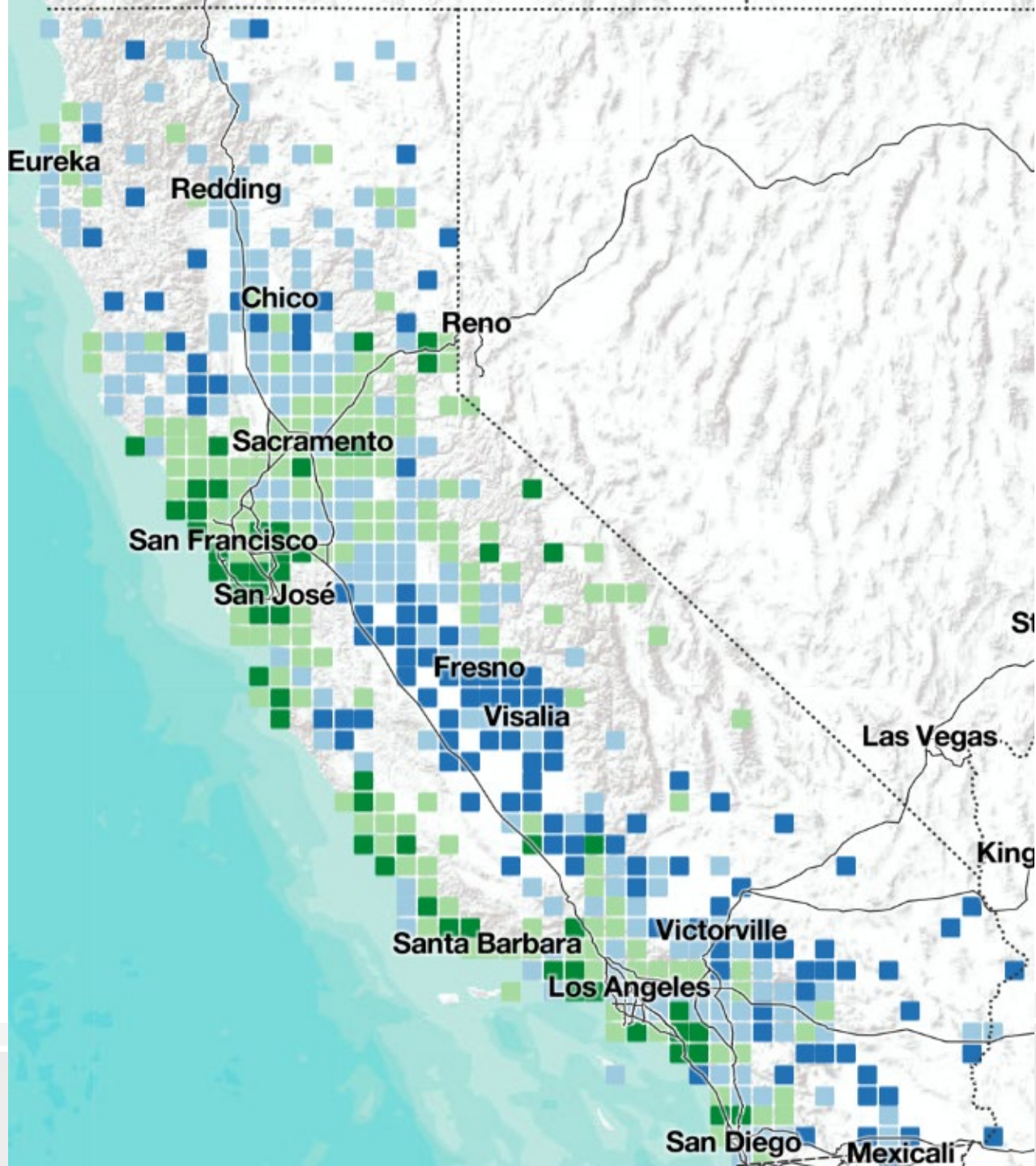
Vaccinations by doses administered

Number of vaccine doses given in California

■ % of total and number of doses administered



<https://covid19.ca.gov/vaccines/>

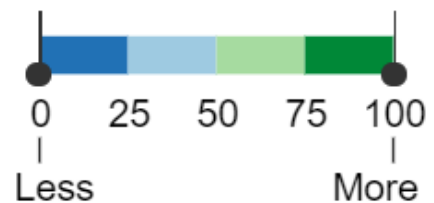


California Healthy Places Index


Census Tracts

Drag handles to change display

Score Percentile

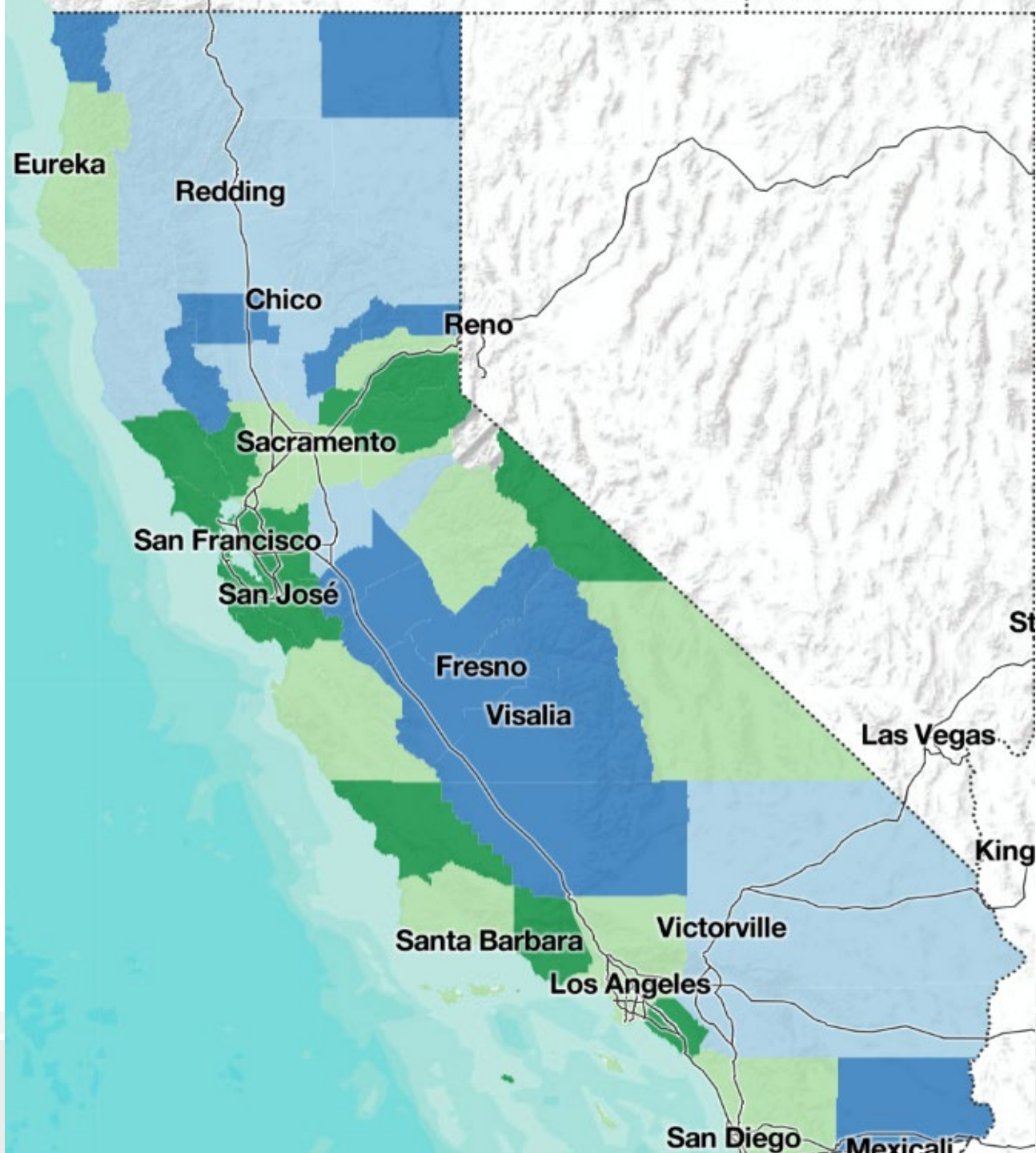


Healthy Conditions

 No Data Available

Equity – Zip codes and population numbers in Stanislaus County

- Of 24 Zip codes,
 - 13 HPI 1
 - 10 HPI 2
 - 1 HPI 3
- 218,444 in HPI quartile 1
- 2.9% Share of Q1 zip codes
- 2.7% Share of Q1 population (1.4% total population)

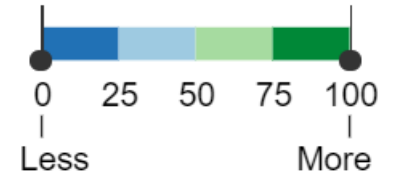


California Healthy Places Index

Counties

Drag handles to change display

Score Percentile



Healthy Conditions

No Data Available

Find eligible population by zip code

- The “eligible population” currently comes from the below formula, but will be updated as new groups become eligible:

$$\text{Eligible population} = (70\% \times 65 \text{ and older population}) + (30\% \times \text{Phase 1B, Tier 1 Sector Population})$$

Example:

Zip Code A	Estimate
People aged 65+	400
People working in education/childcare, emergency services, and food/agriculture	300

$$\text{Eligible population for Zip Code A} = (70\% \times 400) + (30\% \times 300) = 370$$

Plug eligible population into 80-20 quartile split

Each zip code receives an allocation equal to:

$$= \frac{\text{Zip Code Eligible Population}}{\text{Quartile Eligible Population}} \times \text{Quartile's Share of Vaccines}$$

Examples

Zip Code	Quartile	Eligible Population
A	1	370
B	1	800
C	2	300
D	2	500
E	3	600
F	3	600
G	4	500
H	4	500

$$\text{Zip Code A} = \frac{370}{1170} \times 40\% = 13\%$$

$$\text{Zip Code B} = \frac{800}{1170} \times 40\% = 27\%$$

$$\text{Zip Code C} = \frac{300}{800} \times 20\% = 8\%$$

$$\text{Zip Code D} = \frac{500}{800} \times 20\% = 12\%$$

$$\text{Zip Code E} = \frac{600}{1200} \times 20\% = 10\%$$

$$\text{Zip Code F} = \frac{600}{1200} \times 20\% = 10\%$$

$$\text{Zip Code G} = \frac{500}{1000} \times 20\% = 10\%$$

$$\text{Zip Code H} = \frac{500}{1000} \times 20\% = 10\%$$

40% in Q1

20% in Q2

20% in Q3

20% in Q4

Multiply total allocation by zip code share

Example: 100 vaccines to allocate

Zip Code	Share of Vaccines	Allocation
A	13%	13 vaccines
B	27%	27 vaccines
C	8%	8 vaccines
D	12%	12 vaccines
E	10%	10 vaccines
F	10%	10 vaccines
G	10%	10 vaccines
H	10%	10 vaccines
Total	100%	100 vaccines



Vaccinate Stanislaus

Together we can end the pandemic.



Updated vaccine eligibility

Population estimates for Stanislaus County

Phase 1A Estimated 35,000 - 40,000

NOW VACCINATING

- Healthcare workers
- Long-term care residents

Phase 1B Estimated 174,008

NOW VACCINATING AS SUPPLIES ALLOW

- Individuals 65 and older 74,371 (DOF)
- Sector populations:
 - Education and childcare 18,685
 - Emergency services 10,997
 - Food and agriculture 69,955

~430,000 eligible in Stanislaus County; Phase 1B 40%

Aged 16-64 years with high-risk medical conditions

Health conditions

At that time, healthcare providers may use their clinical judgement to vaccinate individuals aged 16-64 who are deemed to be at the very highest risk [↗](#) to get very sick from COVID-19 because they have the following severe health conditions

- **Cancer**, current with weakened immune system
- **Chronic kidney disease**, stage 4 or above
- **Chronic pulmonary disease**, oxygen dependent
- **Down syndrome**
- **Solid organ transplant**, leading to a weakened immune system
- **Pregnancy**
- **Sickle cell disease**
- **Heart conditions**, such as heart failure, coronary artery disease, or cardiomyopathies (but not hypertension)
- **Severe obesity** (Body Mass Index ≥ 40 kg/m²)
- **Type 2 diabetes mellitus** with hemoglobin A1c level greater than 7.5%

About the COVID-19 Vaccines

Millions of Americans have been vaccinated to protect themselves against the COVID-19 virus. If you're wondering which vaccine is best for you, the short answer is **whichever one is available to you upon eligibility**. All the FDA-approved vaccines are safe and effective.

WHAT'S THE DIFFERENCE BETWEEN THE VACCINES?

All available COVID-19 vaccines have been shown to be highly effective at preventing serious impacts of the virus including hospitalizations and deaths. Their differences are primarily the dosage schedule and how they can be transported and stored, as shown below.

	PFIZER-BIONTECH	MODERNA	JOHNSON & JOHNSON
TYPE	mRNA	mRNA	Viral vector
DOSES	2	2	1
PEAK EFFECTIVENESS*	7 days after the second dose*	14 days after the second dose*	28 days after the single dose*

*All three vaccines begin to protect you soon after being administered, including with the first dose.

WHY DOES STORAGE TEMPERATURE MATTER?

All vaccines require refrigeration, and some require cold or ultra-cold storage that many facilities don't have. Each vaccine's storage temperature only matters for storage and transportation—it does not have an impact on the vaccine's effectiveness. The Johnson & Johnson vaccine can be stored in a regular refrigerator, so a local pharmacy or a doctor's office could potentially be a vaccination site, which would increase vaccine access.

HOW EFFECTIVE IS EACH VACCINE?

Based on each vaccine manufacturer's reported data as of February 2021, all three vaccines are highly effective at preventing COVID-19-related severe infections and deaths.

	PFIZER-BIONTECH	MODERNA	JOHNSON & JOHNSON
AGAINST DEATH	100% Effective	100% Effective	100% Effective
AGAINST SEVERE INFECTIONS	75% Effective	100% Effective	85% Effective
AGAINST ALL INFECTIONS	95% Effective	94.5% Effective	66% Effective

All percentages are calculated based on a relatively small number of events and should be viewed as estimates.

HOW EFFECTIVE IS EACH VACCINE?

Based on each vaccine manufacturer's reported data as of February 2021, all three vaccines are highly effective at preventing COVID-19-related severe infections and deaths.

	PFIZER-BIONTECH	MODERNA	JOHNSON & JOHNSON
AGAINST DEATH	100% Effective	100% Effective	100% Effective
AGAINST SEVERE INFECTIONS	75% Effective	100% Effective	85% Effective
AGAINST ALL INFECTIONS	95% Effective	94.5% Effective	66% Effective

All percentages are calculated based on a relatively small number of events and should be viewed as estimates.

<https://publichealthcollaborative.org/resources/graphic-about-the-3-covid-19-vaccines/>



Vaccinate Stanislaus

Together we can end the pandemic.



EOC Update



Vaccinate Stanislaus
Together we can end the pandemic.

EOC Update

- Last week Stanislaus County Public Health clinics provided:
 - 4,234 - 1st dose vaccinations
 - 2,094 - 2nd dose vaccinations
 - 1,465 – single dose
- Scheduled this week
 - 5,878 1st doses
 - 4,302 2nd doses
 - Standing locations: Modesto, Turlock, Oakdale, Patterson
 - Mobile/Pop-up clinic: Waterford
 - Education Closed POD – Last 1st dose
 - Agricultural Closed POD (separate State allocation & vendor)

Regional Vaccine Clinic Schedule



<p>TUESDAY 3.16.21</p>	<p>Modesto Centre Plaza 1st Dose Only (Pfizer) ★ Time: 9am - 5pm</p>	<p>Gladys L. Lemmons Sr. Center 1st Dose Only (Moderna) Time: 9am - 4pm</p>	
<p>WEDNESDAY 3.17.21</p>	<p>Stan State 1st & 2nd Doses (Pfizer) Time: 9am - 5pm</p>		
<p>THURSDAY 3.18.21</p>	<p>Modesto Centre Plaza 2nd Dose Only (Pfizer) Time: 9am - 5pm</p>		
<p>FRIDAY 3.19.21</p>	<p>Stan State 1st Dose Only (Pfizer) Time: 9am - 5pm</p>	<p>Hammon Senior Center 1st Dose Only (Moderna) Time: 9am - 6pm</p>	<p>Gladys L. Lemmons Sr. Center 1st & 2nd Doses (Moderna) Time: 9am - 4pm</p>
<p>SATURDAY 3.20.21</p>	<p>Modesto Centre Plaza 1st Dose Only (Pfizer) Time: 9am - 5pm</p>		

★ MyTurn
appointment
system pilot

For more information regarding public clinics, visit schsa.org/coronavirus



Vaccinate Stanislaus
Together we can end the pandemic.



Get Vaccinated! It's safe, effective, and free

Appointments are available at some clinics 48 hours before they open. Sign up at myturn.ca.gov or call (833) 422-4255 to find out if it's your turn. If you're eligible, you can schedule an appointment, or register to be notified when one is available.

COVID-19 vaccination: Find out if it's your turn

Everyone in California will have an opportunity to get vaccinated against COVID-19 at no cost. But our vaccination supply is limited right now. So we're starting with the groups who are at highest risk, like people with a high chance of exposure and people 65 and older.

Are you eligible?

Find out if it's your turn by answering a few questions. It only takes a few minutes. If you're eligible and vaccine appointments are available through My Turn, you can schedule one. If it's not your turn yet or appointments are not available, you can register to be notified when you're eligible or when appointments open up.

NOTICE: Due to the high demand and limited supply of COVID-19 vaccines, appointments may take a few weeks to schedule. We are adding more appointments regularly and continue to expand statewide.

You can register to receive updates about new appointments and locations.

English ▼

Español

English

简化字

Tagalog

한국어

عربي

正體字

Tiếng Việt

For more information visit.



Vaccinate Stanislaus
Together we can end the pandemic.



COVID-19 MOBILE VACCINE CLINIC WATERFORD

Waterford Community Center
540 C Street, Waterford, CA 95386
Thursday, March 18th, 2021
10:00 am - 3:00 pm

First Come, First Serve!

- Vaccines are limited in supply and available to those who work or live in Stanislaus County and are identified under Phase 1A and Phase 1B (Food & Ag, Education & Childcare, Emergency Services, 65+).
- Proof of age, residence or employment will be verified.



Vaccinate Stanislaus
Together we can end the pandemic.

Vaccine Finder – www.vaccinefinder.org

VaccineFinder
Home
Find Vaccines
COVID-19 VACCINE FAQ

We found 23 Providers

[EDIT SEARCH](#)

Showing results for **Moderna COVID Vaccine, Pfizer–BioNTech COVID Vaccine and Johnson & Johnson's Janssen COVID Vaccine** near **95350** within **10 miles**

Vaccine availability is subject to change. Appointments are required at most locations. Click a location with vaccine "In stock" to take the next step.

1. **CVS Pharmacy, Inc. #01467**
2020 W Briggsmore Ave C • Modesto, CA 95350

0.09 miles →

✔ In Stock
2. **Walmart Inc #10-1587**
2225 Plaza Pkwy • Modesto, CA 95350

0.43 miles →

⊖ Out Of Stock
3. **Walgreens Co. #7313**
1700 Standiford Ave • Modesto, CA 95350

1.38 miles →

✔ In Stock
4. **CVS Pharmacy, Inc. #09308**
901 N Carpenter Rd #30 • Modesto, CA 95351

1.59 miles →

✔ In Stock
5. **SAFeway PHARMACY #1661**
2001 Mchenry Ave • Modesto, CA 95350

1.87 miles →

✔ In Stock
6. **Rite Aid #RA106008**
1707 Mchenry Ave • Modesto, CA 95350

1.93 miles →

✔ In Stock
7. **Walgreens Co. #2865**
1101 Mchenry Ave • Modesto, CA 95350

2.09 miles →

✔ In Stock
8. **Walgreens Co. #6355**
4201 Dale Rd • Modesto, CA 95356

2.42 miles →

✔ In Stock
9. **Walmart Inc #10-5710**
3848 Mchenry Ave • Modesto, CA 95356

2.67 miles →

⊖ Out Of Stock

CVS Pharmacy, Inc. #01467

2020 W Briggsmore Ave C • Modesto, CA 95350

📞 (209) 521-5713

[View Additional Details](#)

Third Party Administrator Transition

- Blue Shield contracted with State to administer the State's allocation and distribution of vaccines
- Providers will need a contract with Blue Shield and to be on-boarded in MyTurn
- Counties may enter a Memorandum of Understanding with State (rather than a Blue Shield contract)
- Operational Implementation underway

Schools Reopening – State Framework

Grades TK - 6 have all “reopened” at least one grade and can continue reopening plans because County case rate is <25

Grades 7 – 12 must wait until County is in Red Tier, then must reopen at least one grade within 3 weeks or risk waiting again if County reverts back to Purple Tier

Once “reopened” can continue to expand reopening regardless of tier changes.

Source: CA Dept of Public Health – COVID-19 and Reopening In-Person Instruction Framework & PH Guidance for K-12 Schools in CA, 2020-2021 School Year, dated January 14, 2021



Vaccinate ALL 58

Together we can end the pandemic.

Thank you

