

ORDINANCE NO. C.S. 1134

AN ORDINANCE AMENDING STANISLAUS COUNTY CODE,
SECTION 11.08.080 RELATING TO ANGLE PARKING
ON NINTH STREET, IN THE KEYES AREA

**THE BOARD OF SUPERVISORS OF THE COUNTY OF STANISLAUS ORDAINS AS
FOLLOWS:**

Section 1 Amend the Stanislaus County Code, Title 11, Chapter 11.08, Section 11.08.080 (Angled Parking) to add to Subsection C (Angle parking is permitted on the following road sections), 10 (Ninth Street) as follows:

"10. Ninth Street. "On the south side of Ninth Street from a point approximately 190 feet southeast of its intersection with Maud Avenue, southeasterly 500 feet of the said intersection."

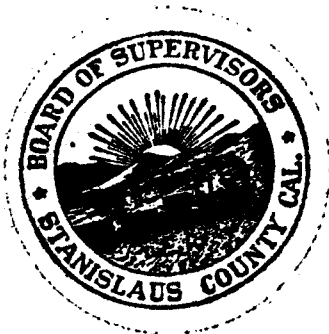
Section 2. This ordinance shall take effect 30 days from and after the date of its passage, and before the expiration of 15 days after its passage, it shall be published once with the names of the members voting for and against the same in the Modesto Bee, a newspaper in the County of Stanislaus, State of California.

Upon motion of Supervisor De Martini, seconded by Supervisor Withrow, the Foregoing ordinance as passed and adopted at a regular meeting of the Board of Supervisors of the County of Stanislaus, State of California, this 16th day of July, 2013, by the following called vote.

AYES: Supervisors: O'Brien, Withrow, De Martini and Chairman Chiesa
NOES: Supervisors: None
ABSENT: Supervisors: Monteith



Vito Chiesa
Chairman of the Board of Supervisors
Of the County of Stanislaus, State of California



ATTEST:

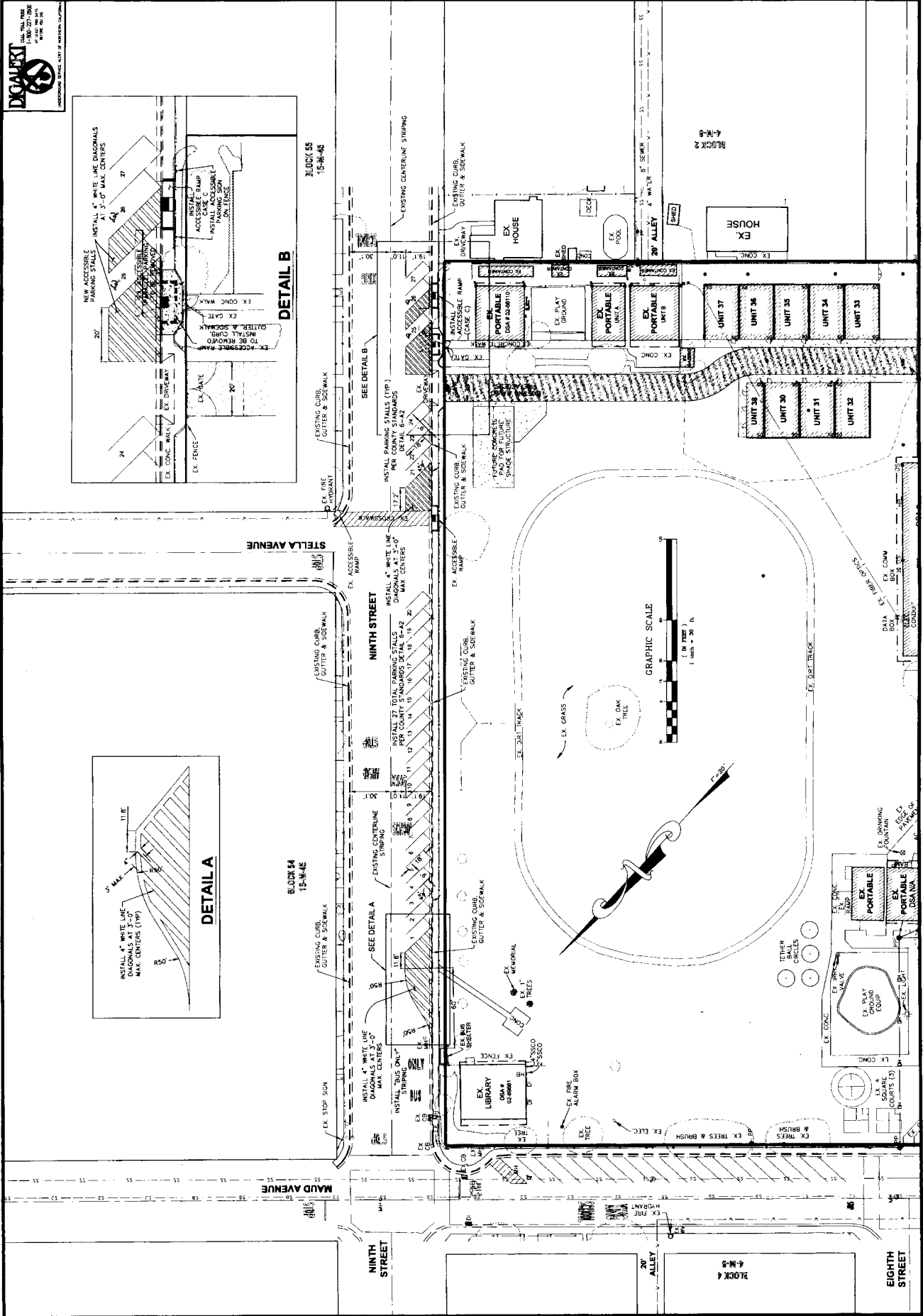
CHRISTINE FERRARO TALLMAN
Clerk of the Board of Supervisors
Of the County of Stanislaus, State of California

By: Elizabeth King
Deputy Clerk

APPROVED AS TO FORM:

John P. Doering
County Counsel

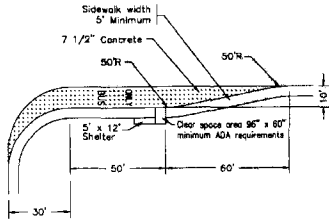
By: Thomas E. Boze
Thomas E. Boze
Deputy County Counsel



MORRIS & ASSOCIATES
1300 27th Street
San Francisco, CA 94114
TEL: (415) 774-1100
WWW: MORRIS-CA.COM

CHARTER SCHOOL
5709 NINTH STREET
KEYES, STANISLAUS COUNTY, CA

SHEET 1
DATE: 6-10-13
JOB NO: 12-163

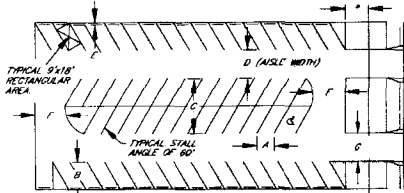


NOTES:

1. No extra shelter pad needed for sidewalks wider than 10 feet.
2. Shelter pad and shelters must be wide enough to meet ADA requirements 4.0' x 3.0' clear floor area within shelter perimeter.

Scale	No.	Revised	By	Approved by
				<i>[Signature]</i>
FAR SIDE BUS TURNOUT COUNTY OF STANISLAUS DEPARTMENT OF PUBLIC WORKS				
Drawn by	P. Smith	Date	01/09/2007	Division of Public Works
Checked by	S. Erickson	Plate No.	3-M1	

TYPICAL PARKING LOT DIAGRAM



PARKING SPACE AND AISLE DIMENSION TABLE

PARKING ANGLE TO DRIVEWAY	PARKING ANGLE TO DRIVEWAY							
	45°	50°	55°	60°	70°	80°	90°	
SPACE WIDTH A	12.7'	11.7'	11.0'	10.4'	9.8'	9.1'	8.0'	
SPACE DEPTH B	19.1'	18.6'	19.0'	20.1'	20.0'	18.1'	18.0'	
DOUBLE SPACE DEPTH C	31.8'	33.4'	34.7'	35.7'	36.9'	37.0'	36.0'	
AISLE WIDTH D	8.8'	9.8'	12.2'	13.8'	19.0'	21.7'	24.0'	

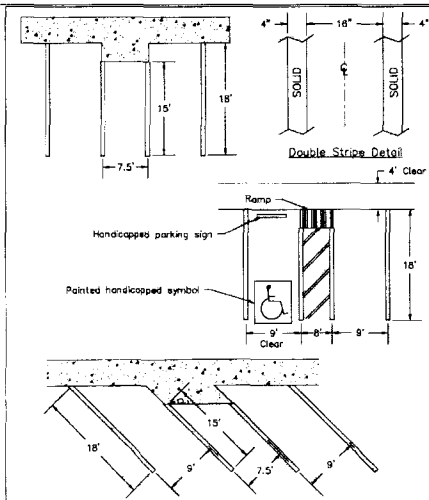
FOR ANY OTHER PARKING ANGLE BETWEEN 45° AND 90° NOT SPECIFICALLY LISTED IN THE ABOVE TABLE, USE A TABLE ANGLE NEAREST THE CHAIN ANGLE.

THE MINIMUM AISLE WIDTH (D) AT ANY PARKING ANGLE LESS THAN 45 DEGREES INCLUDING PARALLEL STALLS, IS 8.0 FEET.

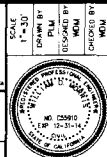
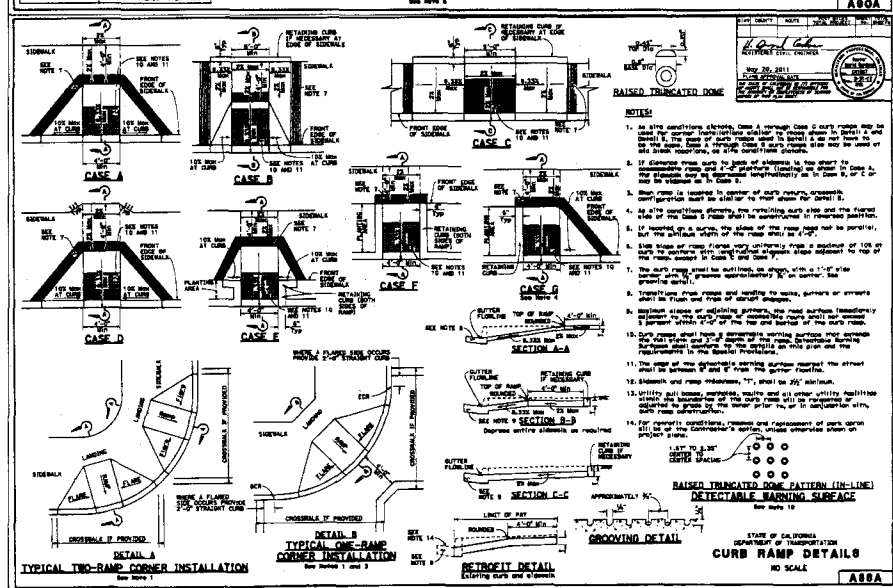
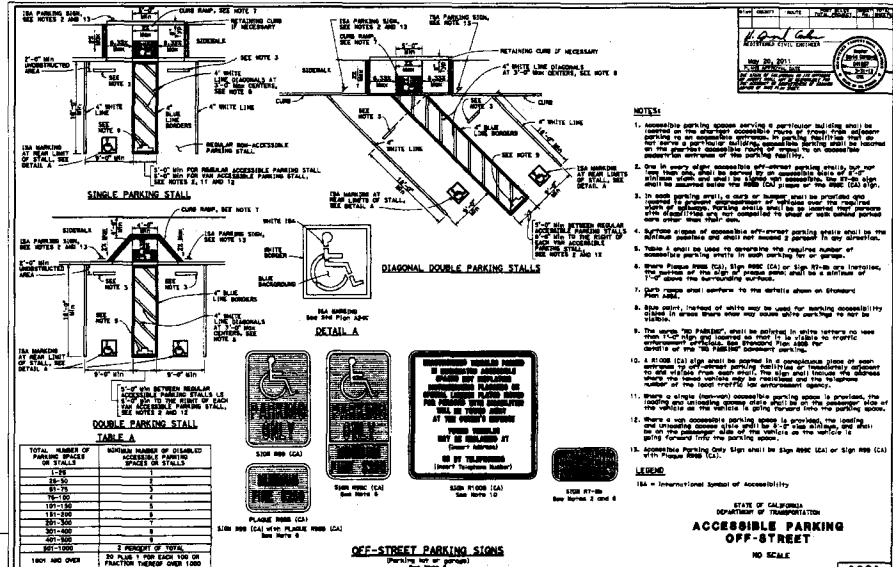
THE TURNAROUND OR END DRIVEWAY WIDTH (F) SHALL BE A MINIMUM OF SEVENTEEN (17) FEET. IF WHEEL-CLIP OR CURB-STOP THE MINIMUM TURNAROUND WIDTH (F) SHALL BE A MINIMUM OF TWO AND ONE-HALF (2.5) FEET FOR ANY PARKING PLAN.

THE MINIMUM DRIVEWAY WIDTH (E) FOR ONE-WAY TRAFFIC IS 10 FEET AND FOR TWO-WAY TRAFFIC IS 20 FEET.

Scale	No.	Revised	By	Approved by
				<i>[Signature]</i>
TYPICAL PARKING LOT DESIGN COUNTY OF STANISLAUS DEPARTMENT OF PUBLIC WORKS				
Drawn by	P. Smith	Date	01/09/2007	Division of Public Works
Checked by	S. Erickson	Plate No.	6-A1	



Scale	No.	Revised	By	Approved by
				<i>[Signature]</i>
TYPICAL PARKING STALL DETAIL COUNTY OF STANISLAUS DEPARTMENT OF PUBLIC WORKS				
Drawn by	P. Smith	Date	01/09/2007	Division of Public Works
Checked by	S. Erickson	Plate No.	6-A2	



By: *[Signature]*
 WILLIAM G. MORRIS
 REG. EXP. 12/31/14
 DATE: 4/10/13

MORRIS
 ENGINEERS & ARCHITECTS, INC.
 334 S. YOSEMITE AVENUE, SUITE D
 OAKDALE, CA 95361
 (916) 845-9175 FAX (916) 845-9177 (FAX)

ACCESSIBLE PARKING OFF-STREET
 NO SCALE
 A80A



By: *[Signature]*
 WILLIAM G. MORRIS
 REG. EXP. 12/31/14
 DATE: 4/10/13

MORRIS
 ENGINEERS & ARCHITECTS, INC.
 334 S. YOSEMITE AVENUE, SUITE D
 OAKDALE, CA 95361
 (916) 845-9175 FAX (916) 845-9177 (FAX)

STRIPING PLAN
KEYS TO LEARNING
CHARTER SCHOOL
5709 NINTH STREET
KEYES, STANISLAUS COUNTY, CA

NO SCALE
 A88A

**DECLARATION OF PUBLICATION
(C.C.P. S2015.5)**

**COUNTY OF STANISLAUS
STATE OF CALIFORNIA**

I am a citizen of the United States and a resident Of the County aforesaid; I am over the age of Eighteen years, and not a party to or interested In the above entitle matter. I am a printer and Principal clerk of the publisher of **THE MODESTO BEE**, printed in the City of **MODESTO**, County of **STANISLAUS**, State of California, daily, for which said newspaper has been adjudged a newspaper of general circulation by the Superior Court of the County of **STANISLAUS**, State of California, Under the date of **February 25, 1951, Action No. 46453**; that the notice of which the annexed is a printed copy, has been published in each issue there of on the following dates, to wit:

Jul 23, 2013

ORDINANCE NO. C.S. 1134

AN ORDINANCE AMENDING STANISLAUS COUNTY CODE, SECTION 11.08.080 RELATING TO ANGLE PARKING ON NINTH STREET, IN THE KEYES AREA. THE BOARD OF SUPERVISORS OF THE COUNTY OF STANISLAUS ORDAINS AS FOLLOWS:

Section 1. Amend the Stanislaus County Code, Title 11, Chapter 11.08, Section 11.08.080 (Angled Parking) to add to Subsection C (Angle parking is permitted on the following road sections), 10 (Ninth Street) as follows:

"10. Ninth Street. "On the south side of Ninth Street from a point approximately 190 feet southeast of its intersection with Maud Avenue, southeasterly 500 feet of the said intersection."

Section 2. This ordinance shall take effect 30 days from and after the date of its passage, and before the expiration of 15 days after its passage, it shall be published once with the names of the members voting for and against the same in the Modesto Bee, a newspaper in the County of Stanislaus, State of California.

Upon motion of Supervisor De Martini, seconded by Supervisor Withrow, the foregoing ordinance as passed and adopted at a regular meeting of the Board of Supervisors of the County of Stanislaus, State of California, this 16th day of July 2013, by the following called vote: AYES: Supervisors: O'Brien, Withrow, De Martini and Chairman Chiesa; NOES: Supervisors: None; ABSENT: Supervisors: Monteith. /s/ Vito Chiesa, Chairman of the Board of Supervisors of the County of Stanislaus, State of California. ATTEST: Christine Ferraro Tallman, Clerk of the Board of Supervisors of the County of Stanislaus, State of California. By: Elizabeth A. King, Asst Clerk. APPROVED AS TO FORM: John P. Doering, County Counsel. By: Thomas E. Boze, Deputy County Counsel

Pub Dates Jul 23, 2013

I certify (or declare) under penalty of perjury That the foregoing is true and correct and that This declaration was executed at

MODESTO, California on

July 23rd, 2013

(By Electronic Facsimile Signature)

