

THE BOARD OF SUPERVISORS OF THE COUNTY OF STANISLAUS
ACTION AGENDA SUMMARY

DEPT: Public Works *mbd*

BOARD AGENDA # *C-1

Urgent Routine

AGENDA DATE September 13, 2011

CEO Concurs with Recommendation YES NO
(Information Attached)

4/5 Vote Required YES NO

SUBJECT:

Approval to Accept the Relinquishment of Portions of Stanislaus County Roads Per California Department of Transportation (CalTrans) Proposed Relinquishment No. 16340

STAFF RECOMMENDATIONS:

Pursuant to the California Streets and Highways Code Section 73:

1. Accept the relinquishment of portions of Stanislaus County roads which were included in the improvement project of State Route 219.
2. Waive the requirement for a 90-day notice from the State of the intention to relinquish said roads.

FISCAL IMPACT:

Maintenance of the accepted roadways will be the responsibility of the Public Works Roads Division and is included in the annual operations budget.

BOARD ACTION AS FOLLOWS:

No. 2011-532

On motion of Supervisor Chiesa, Seconded by Supervisor Withrow

and approved by the following vote,

Ayes: Supervisors: O'Brien, Chiesa, Withrow, DeMartini, and Chairman Monteith

Noes: Supervisors: None

Excused or Absent: Supervisors: None

Abstaining: Supervisor: None

1) X Approved as recommended

2) Denied

3) Approved as amended

4) Other:

MOTION:

Christine Ferraro

ATTEST: CHRISTINE FERRARO TALLMAN, Clerk

File No.

Approval to Accept the Relinquishment of Portions of Stanislaus County Roads Per California Department of Transportation (CalTrans) Proposed Relinquishment No. 16340

DISCUSSION:

The California Department of Transportation (CalTrans) completed Phase 1 of the State Route 219 improvement project in the area east of Salida, between State Route 99 and Dale Road that included improving both intersections at Sisk Road and Dale Road. CalTrans now desires to relinquish portions of these areas, as delineated on CalTrans Proposed Relinquishment Map No. 16340 (Exhibit A) to the County of Stanislaus (County). Upon relinquishment, the vesting of all right, title, and interest of the State in these roads and portions of these roads is confirmed to the County.

The property that will be relinquished to the County are portions of Sisk Road and Dale Road, approximately 42,500 square feet, as delineated on the relinquishment maps on file with the Public Works Department and contained within this document as Exhibit A. The properties were purchased to achieve the improvements and to conform to County roadways. The improvements within these areas meet County standards and will provide at least a 10-year service life.

The State is required to give a 90-day notice, in writing, of the intention to relinquish road right-of-way to allow the County time to protest the relinquishment. The protests are usually made if the roads are not in a state of good repair or if the road is not needed for public use, or for other such reasons. The Public Works Department has found the roads to be acceptable and in current use by the public. Therefore, the need for a 90-day notice from the State is not required and the County can comply with the request by CalTrans to waive that requirement.

Stanislaus County and the Cities of Oakdale, Riverbank, and Modesto have supported this project from conception (1997) through construction (2009/2010) as a means to provide safe and efficient travel and to alleviate congestion.

POLICY ISSUES:

This action is consistent with the Board of Supervisors' priority of A Well Planned Infrastructure System by improving the County roadway system and its connection with the State Highway System.

STAFFING IMPACT:

There is no staffing impact associated with this item.

CONTACT PERSON:

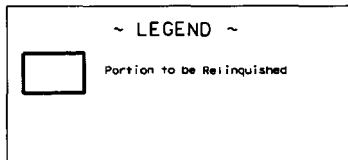
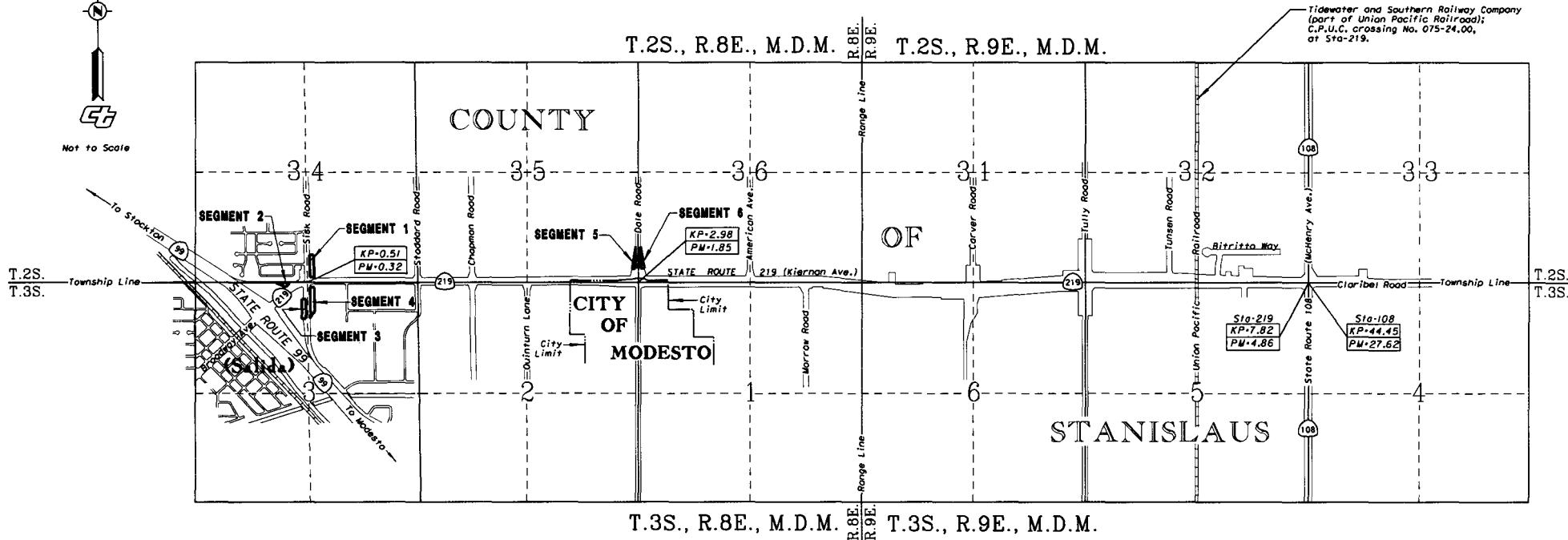
Laurie Barton, Deputy Director, Department of Public Works. Telephone: 209-525-4130.



Not to Scale

PORTIONS OF SECTIONS 34, 35, 36, T. 2 S., R. 8 E., M.D.M., and,
PORTIONS OF SECTION 3, T. 3 S., R. 8 E., M.D.M.

DISTRICT	COUNTY	ROUTE	KILOMETER POST MILE	SHEET NO.	TOTAL SHEETS
10	STA	219	0.51/2.98	1	1
			0.32/1.85		



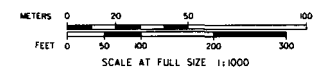
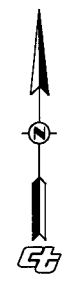
NOTE:
STATE'S RIGHTS ARE NOT EXTINGUISHED
UNTIL RECORDATION OF RELATED CTC
RESOLUTION.

**ALL SEGMENTS ARE
COLLATERAL FACILITIES
(Reconstructed County Roads)**

EXHIBIT A
STATE OF CALIFORNIA
BUSINESS, TRANSPORTATION AND HOUSING AGENCY
DEPARTMENT OF TRANSPORTATION
PROPOSED RELINQUISHMENT NO. 16340
CONSISTING OF 6 SEGMENTS TO THE
COUNTY OF STANISLAUS

DIST.	COUNTY	ROUTE	KILOMETER POST MILEAGE	SHEET NO.	TOTAL SHEETS
10	STA	219	0.51	2	3
			0.32		

T.2 S., R.8 E., M.D.M.



COUNTY

ALL SEGMENTS ARE COLLATERAL FACILITIES

SEGMENT 1


OF


STATE ROUTE 219 (Kiernan Ave.)

SEGMENT 2
(See Sheet 3)

Section 3
T.3 S., R.8 E., M.D.M.
SEE SHEET NO. 3

~ LEGEND ~

 Portion to be Relinquished

 Access Rights Previously Acquired

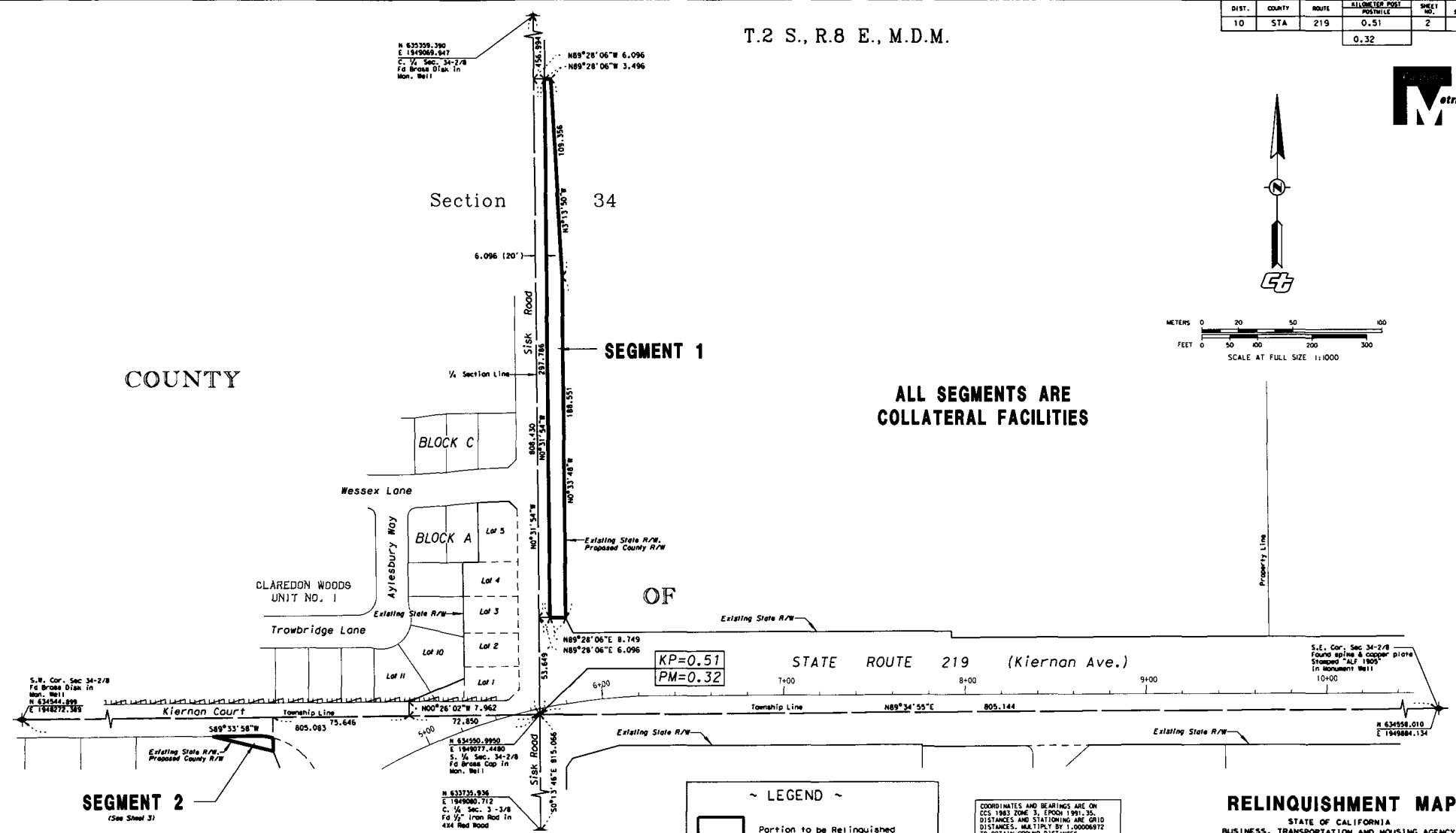
COORDINATES AND BEARINGS ARE ON
CCS 1983 ZONE 3, EPOCH 1991.35.
DISTANCES AND STATIONING ARE GRID
DISTANCES. MULTIPLY BY 1.00006972
TO OBTAIN GROUND DISTANCES.
TO CONVERT METERS TO U.S. SURVEY
FEET MULTIPLY DISTANCES BY 3937/1200.

RELINQUISHMENT MAP

STATE OF CALIFORNIA
BUSINESS, TRANSPORTATION AND HOUSING AGENCY
DEPARTMENT OF TRANSPORTATION

PROPOSED RELINQUISHMENT NO. 16340
CONSISTING OF 6 SEGMENTS TO THE
COUNTY OF STANISLAUS

STANISLAUS



SEE SHEET NO. 2

T.2 S., R.8 E., M.D.M.
Section 34

DIST.	COUNTY	ROUTE	KILOMETER POST MILEAGE	SHEET NO.	TOTAL SHEETS
10	STA	219	0.51	3	3
			0.32		

COUNTY

DETAIL

SEGMENT 1
(See Sheet 2)

STATE ROUTE 219 (Kiernan Ave.)

KP=0.51
PM=0.32

SEGMENT 2

STATE ROUTE 219
(East Broadway Ave.)

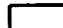
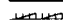
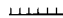
T.3 S., R.8 E., M.D.M.
Section 3

SEGMENT 4 OF

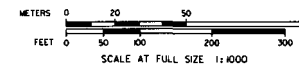
SEGMENT 3

ALL SEGMENTS ARE
COLLATERAL FACILITIES

~ LEGEND ~

-  Portion to be Relinquished
-  Access Rights Previously Acquired
-  Access Prohibited

COORDINATES AND BEARINGS ARE ON
CCS 1983 ZONE 3, EPOCH 1991.30.
DISTANCES AND STATIONING ARE GRID
DISTANCES. MULTIPLY BY 1.0000672
TO OBTAIN GROUND DISTANCES.
TO CONVERT METERS TO U.S. SURVEY
FEET MULTIPLY DISTANCES BY 3937/1200.



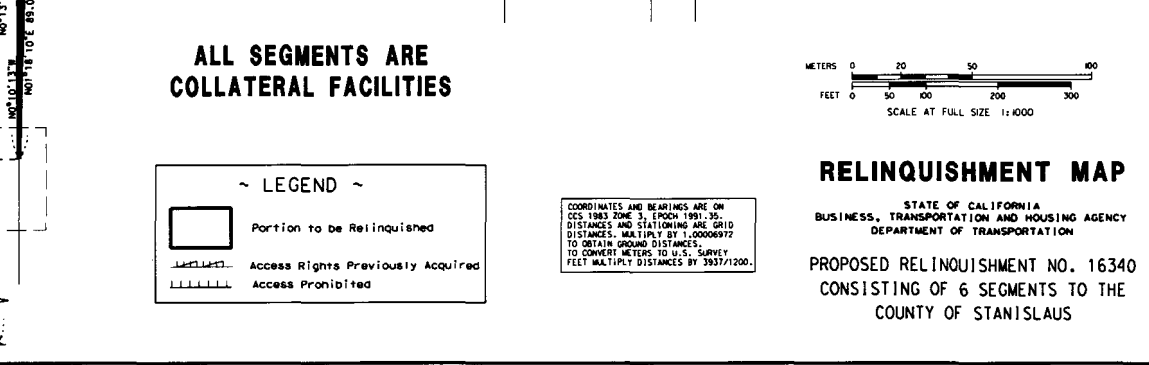
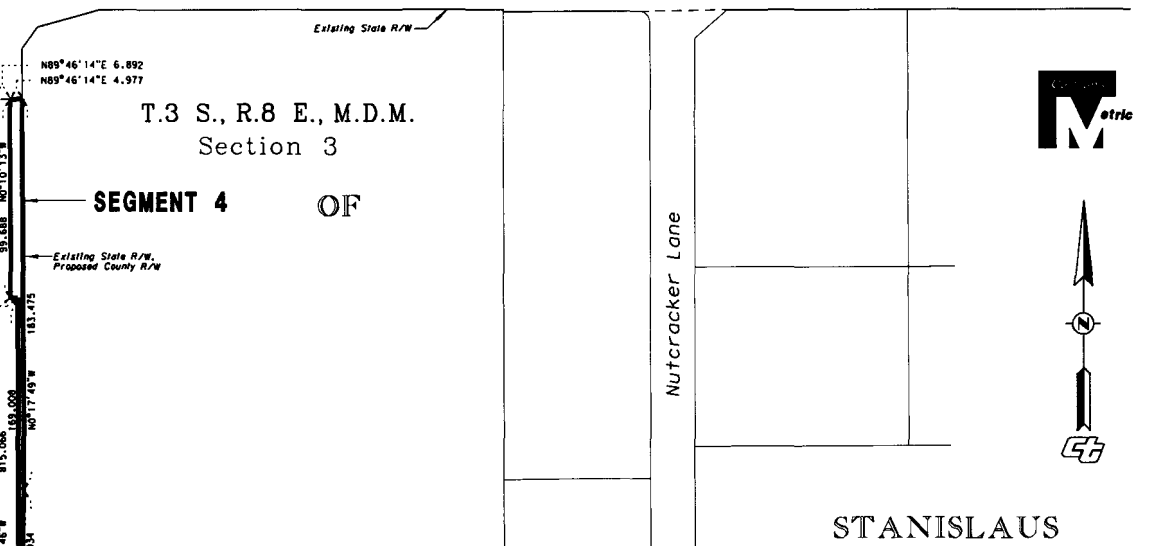
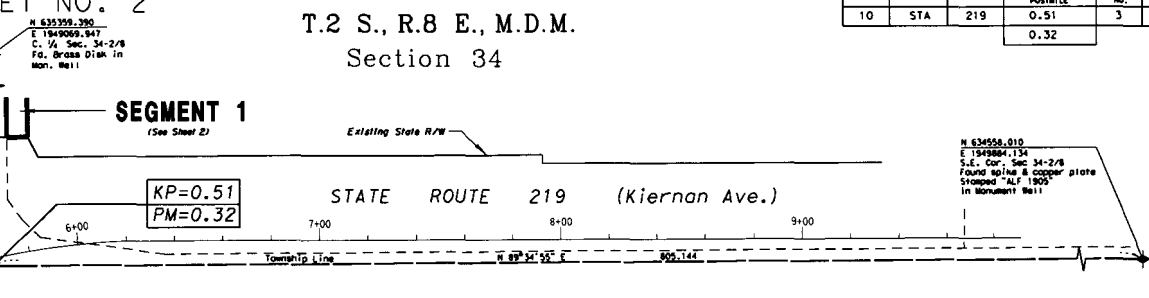
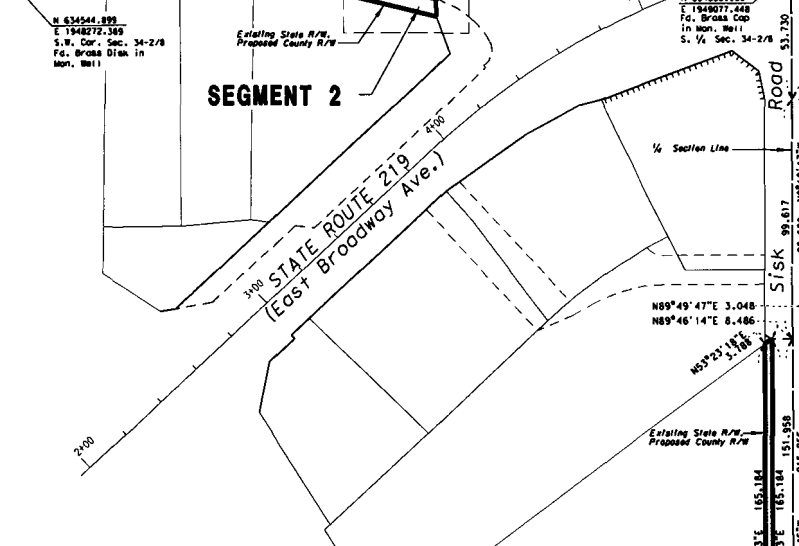
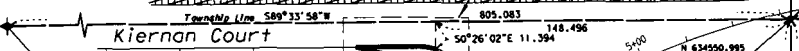
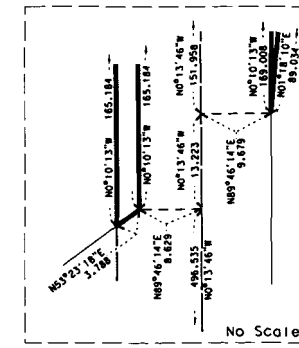
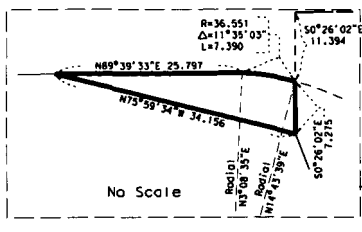
RELINQUISHMENT MAP

STATE OF CALIFORNIA
BUSINESS, TRANSPORTATION AND HOUSING AGENCY
DEPARTMENT OF TRANSPORTATION

PROPOSED RELINQUISHMENT NO. 16340
CONSISTING OF 6 SEGMENTS TO THE
COUNTY OF STANISLAUS



STANISLAUS



DIST.	COUNTY	ROUTE	ELONGATION POST MILEPOST	SHEET NO.	TOTAL SHEETS
10	STA	219	2.98	4	4
			1.85		

T.2 S., R.8 E., M.D.M.

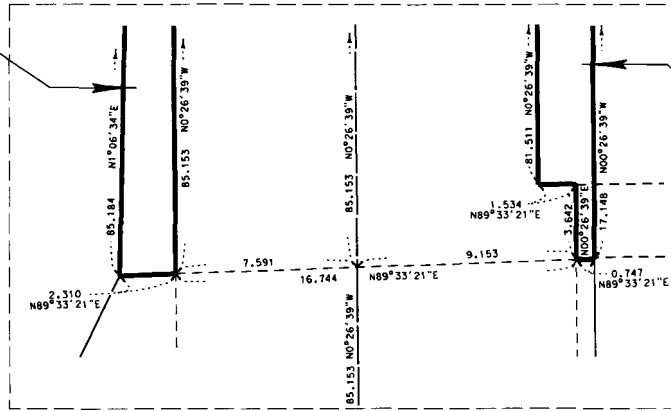
Section 35

ALL SEGMENTS ARE COLLATERAL FACILITIES



COUNTY

SEGMENT 5



SEGMENT 6

OF

SEGMENT 5

DETAIL

E 1/4 COR SEC 35 1/4
To 3rd Roadwood Post
set 1" Iron pipe
down 12
N 635373.055
E 1951488.679

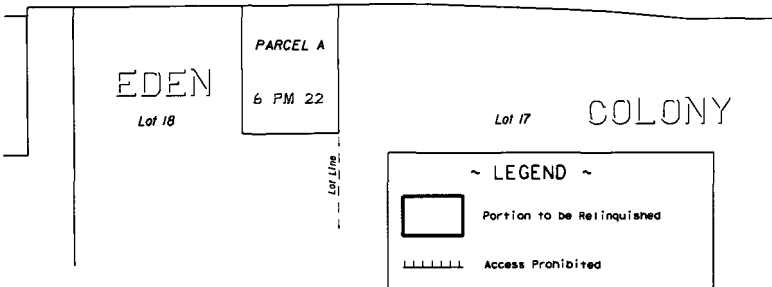
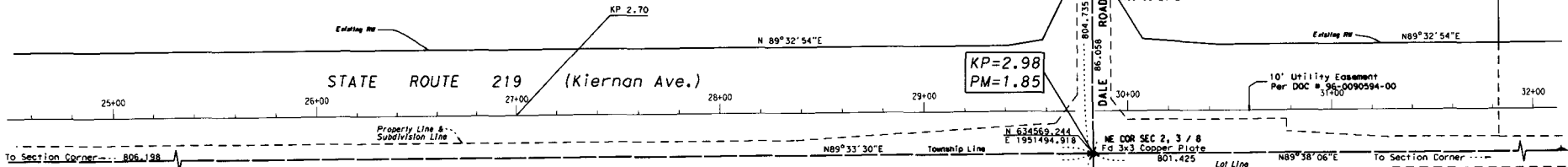
Section 36
50 PM 10

Parcel A
SEGMENT 6

STANISLAUS

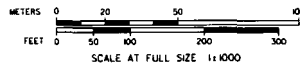
MID Utility Easement.
Per Doc# 00-0024674-00
Dated 3/31/00

10' Utility Easement
Per Doc # 96-0090594-00
3/1/00



CITY Section 2
T.3 S., R.8 E., M.D.M.

COORDINATES AND BEARINGS ARE ON
CCS 1983 ZONE 3, EPOCH 1991.35.
DISTANCES AND STATIONING ARE GRID
DISTANCES. MULTIPLY BY 1.00006912
TO OBTAIN GROUND DISTANCES.
TO CONVERT METERS TO U.S. SURVEY
FEET MULTIPLY DISTANCES BY 3937/1200.



MODESTO

Section 1

ALBEMERL TRACT
4-M-19
LOT 37

RELINQUISHMENT MAP

STATE OF CALIFORNIA
BUSINESS, TRANSPORTATION AND HOUSING AGENCY
DEPARTMENT OF TRANSPORTATION

PROPOSED RELINQUISHMENT NO. 16340
CONSISTING OF 6 SEGMENTS TO THE
COUNTY OF STANISLAUS

DEPARTMENT OF TRANSPORTATION

P.O. BOX 2048 STOCKTON, CA 95201
(1976 E. CHARTER WAY/1976 E. DR. MARTIN
LUTHER KING JR. BLVD. 95205)
TTY: California Relay Service (800) 735-2929
PHONE (209) 942-6097
FAX (209) 948-7789



*Flex your power!
Be energy efficient!*

January 23, 2012

10-STA-219-PM 0.24/1.85
Rel. 16340
CTC Res. R-3821

County Board of Supervisors
County of Stanislaus
1010 10th Street
Suite 6700
Modesto, CA 95354
(209) 525-4494

Dear Sir/Madam,

A copy of CTC Relinquishment Resolution R-3821 has been sent to you. This resolution was recorded on January 06, 2012, as Document No. 12-0001623-00 in the Official Records of Stanislaus County.

The recording of this resolution is the so-called "last act" that transfers, in addition to all obligations, all of the State of California's rights, title and interests in and to the portions of the superceded highway and/or collateral facilities. All rights, title and interests now vest in the County of Stanislaus per Section 73 of the Streets and Highways Code.

Enclosed for your records is a copy of the recorded resolution and a map illustrating the limits of the relinquishment. The County Surveyor, Stanislaus County Assessor, Department of Public Works and as well as the Stanislaus office of the California Highway Patrol have been notified. If you have any questions please call me at the above listed number.

Sincerely,

A handwritten signature in cursive script, appearing to read "Kuldip Hundal".

Kuldip Hundal
Transportation Surveyor
California Department of Transportation
D10 Stockton, CA
209 942-6097

BOARD OF SUPERVISORS
2012 JAN 25 P 1:56

TRANSPORTATION COMMISSION
RESOLUTION No. R-3821



RELINQUISHMENT OF HIGHWAY RIGHT OF WAY IN THE
COUNTY OF STANISLAUS, ROAD 10-STA-219-PM 0.24/1.85
Request No. 16340

WHEREAS, by County Board of Supervisors Action No.
2011-532, dated September 13, 2011, the County of Stanislaus
waived the 90-day notice requirement and agreed to accept title
to portions of State Highway Route 219 right of way, upon
relinquishment thereof to said County by the State of California;
and

WHEREAS, the State of California has acquired right of
way for and has constructed the above-mentioned collateral
facilities in the County of Stanislaus, along Route 219, from
Kiernan Court to Dale Road; and

WHEREAS, this Commission has found and determined, and
does hereby find and determine, that it is desirable and in the
public interest that said collateral facilities be relinquished
to the County of Stanislaus for use as county roads.

NOW, THEREFORE, IT IS VOTED by the California Transportation Commission that it relinquish, and it does hereby relinquish, to the County of Stanislaus, effective upon the recordation of a certified copy hereof with the Recorder of Stanislaus County, all of the State of California's right, title and interest in and to said collateral facilities in said County, together with the right of way and appurtenances thereof, described as follows:

All that portion of highway right of way, shown as SEGMENTS 1 through 6, inclusive, on that certain map entitled "PROPOSED RELINQUISHMENT NO. 16340 CONSISTING OF 6 SEGMENTS TO THE COUNTY OF STANISLAUS", filed on October 6, 2011, as Instrument No. 2011-0083065-00, in State Highway Map Book No. 4, pages 2 through 5, inclusive, in the Office of the Stanislaus County Recorder.

EXCEPTING AND RESERVING to the State of California any and all rights of ingress to and egress from the Highway hereby relinquished in and to the adjacent and adjoining freeway, except at such points as are now or may be established by resolution of this Commission.

DATE: 08/27/10
 Drawn by: [Signature]
 Checked by: [Signature]

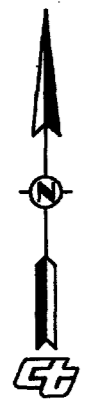
PORTIONS OF SECTIONS 34, 35, & 36, T. 2 S., R. 8 E., M.D.M., and
 PORTIONS OF SECTION 3, T. 3 S., R. 8 E., M.D.M.



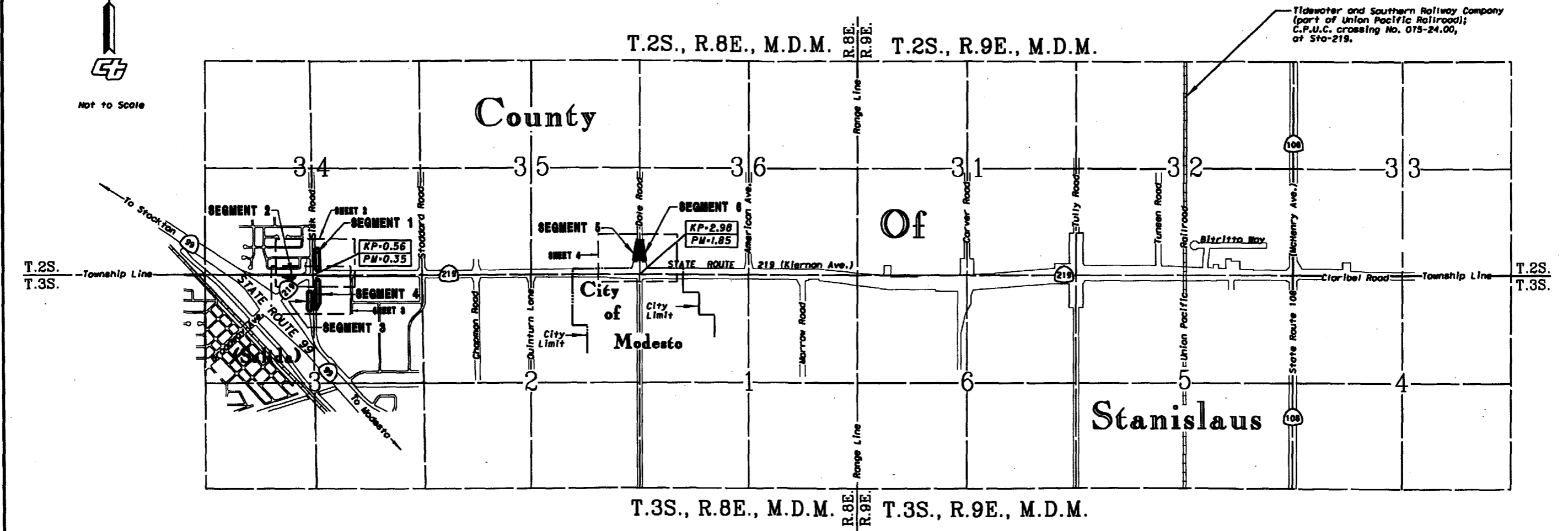
DISTRICT	COUNTY	ROUTE	KILOMETER POST POST MILE	SHEET NO.	TOTAL SHEETS
10	STA	219	0.38/2.98	1	4
			0.24/1.85		

Kuddegar K. B.
 PROFESSIONAL LAND SURVEYOR
 DATE APPROVED: 10-7-2011
 No. 8741
 STATE OF CALIFORNIA
 The State of California or its officers or agents shall not be responsible for the accuracy or completeness of electronic copies of this map.

NOTE:
 STATE'S RIGHTS ARE NOT EXTINGUISHED
 UNTIL RECORDATION OF RELATED CTC
 RESOLUTION.



Not to Scale



Tidewater and Southern Railway Company
 (part of Union Pacific Railroad);
 C.P.U.C. crossing No. 075-24.00,
 at Sta-219.

~ LEGEND ~
 Portion to be Relinquished

Instrument No. 2011-0083063-00
 Filed for record 11th day of October, 2011
 in State Highway Map Book 4 at page 2
 Stanislaus County Records at the request of the
 California Department of Transportation.
 Fee: None (Filed in Compliance with Sections 128 & 129
 of the Streets and Highways Code.)
 Leo Lundrigan
 County Recorder Clerk
 By: _____
 Deputy Recorder

ALL SEGMENTS ARE
 COLLATERAL FACILITIES
 (Reconstructed County Roads)

RELINQUISHMENT MAP
 STATE OF CALIFORNIA
 BUSINESS, TRANSPORTATION AND HOUSING AGENCY
 DEPARTMENT OF TRANSPORTATION
 PROPOSED RELINQUISHMENT NO. 16340
 CONSISTING OF 6 SEGMENTS TO THE
 COUNTY OF STANISLAUS

DIST.	COUNTY	ROUTE	KILOMETER POST	SHEET NO.	TOTAL SHEETS
			POSTMILE		
10	STA	219	0.56	2	4
			0.35		

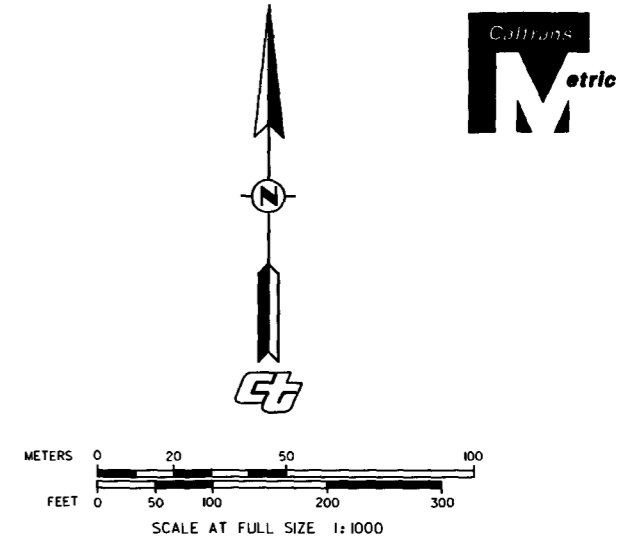
T.2 S., R.8 E., M.D.M.

The State of California or its officers or agents shall not be responsible for the accuracy or completeness of electronic copies of this map.

NOTE:
STATE'S RIGHTS ARE NOT EXTINGUISHED UNTIL RECORDATION OF RELATED CTC RESOLUTION.

ALL SEGMENTS ARE COLLATERAL FACILITIES

COORDINATES AND BEARINGS ARE ON
CCS 1983 ZONE 3, EPOCH 1991.35.
DISTANCES AND STATIONING ARE GRID
DISTANCES. MULTIPLY BY 1.00006972
TO OBTAIN GROUND DISTANCES.
TO CONVERT METERS TO U.S. SURVEY
FEET MULTIPLY DISTANCES BY 3937/1200.


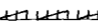


COUNTY

Section 34

SEGMENT 1

~ LEGEND ~

-  Portion to be Relinquished
-  Access Rights Previously Acquired

OF

STATE ROUTE 219 (Kiernan Ave.)

KP=0.56
PM=0.35

S.E. Cor. Sec 34-2/8
Found spike & copper plate
Stamped "ALF 1905"
In Monument Well

N 634558.010
E 1949884.134

SEGMENT 2

(See Sheet 3)

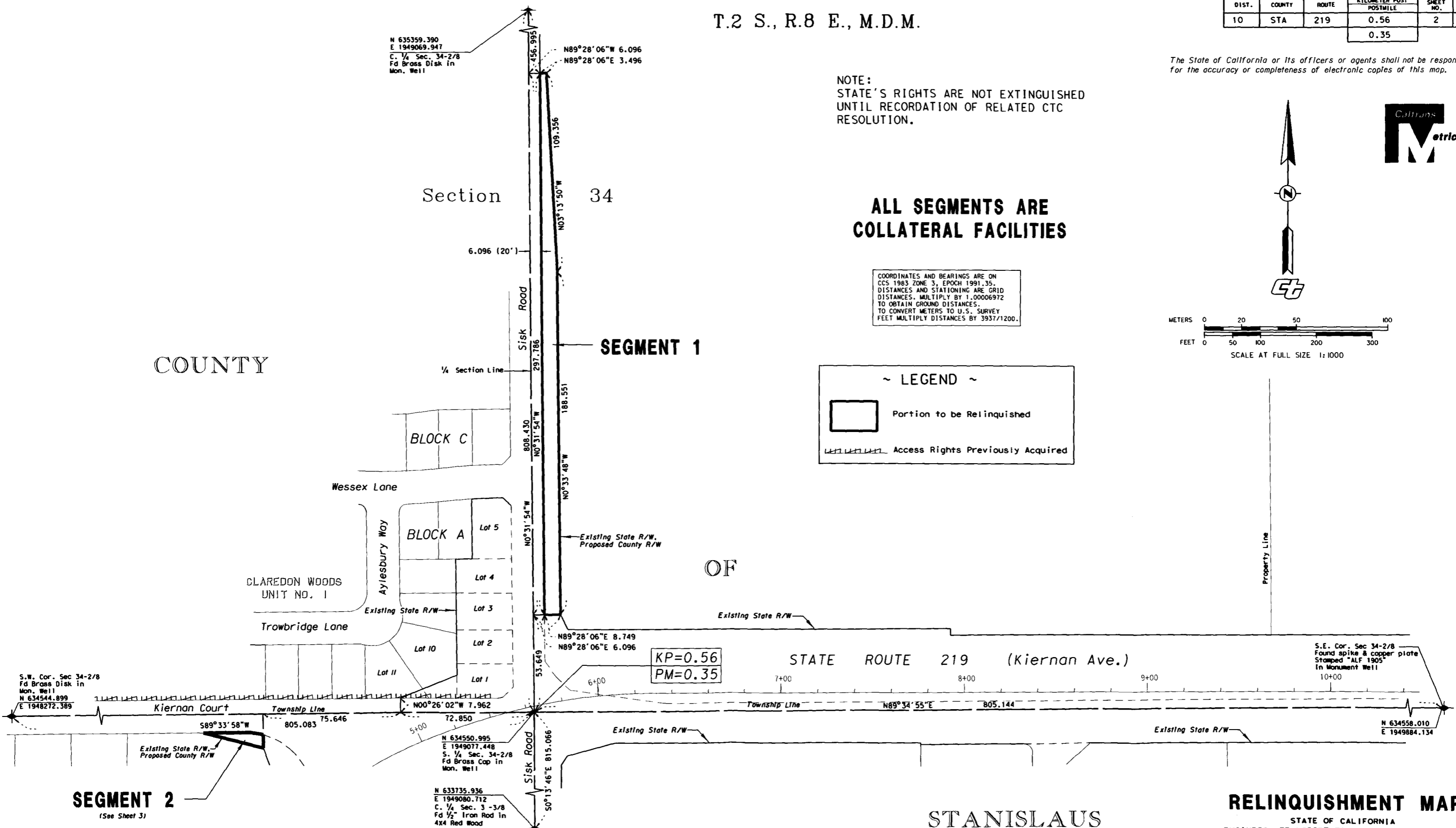
Section 3
T.3 S., R.8 E., M.D.M.
SEE SHEET NO. 3

STANISLAUS

RELINQUISHMENT MAP

STATE OF CALIFORNIA
BUSINESS, TRANSPORTATION AND HOUSING AGENCY
DEPARTMENT OF TRANSPORTATION

PROPOSED RELINQUISHMENT NO. 16340
CONSISTING OF 6 SEGMENTS TO THE
COUNTY OF STANISLAUS



SEE SHEET NO. 2

T.2 S., R.8 E., M.D.M.
Section 34

DIST.	COUNTY	ROUTE	KILOMETER POST POSTMILE	SHEET NO.	TOTAL SHEETS
10	STA	219	0.56	3	4
			0.35		

The State of California or its officers or agents shall not be responsible for the accuracy or completeness of electronic copies of this map.

COUNTY

DETAIL

SEGMENT 1
(See Sheet 2)

STATE ROUTE 219 (Kiernan Ave.)

KP=0.56
PM=0.35

N 634558.010
E 1949884.134
S.E. Cor. Sec 34-2/8
Found spike & copper plate
Stamped "ALF 1905"
in Monument Well

Township Line

Township Line

SEGMENT 2

T.3 S., R.8 E., M.D.M.
Section 3

SEGMENT 4 OF

PM VOL 3 PAGE 57

PARCEL B

NOTE:
STATE'S RIGHTS ARE NOT EXTINGUISHED
UNTIL RECORDATION OF RELATED CTC
RESOLUTION.

Nutcracker Lane


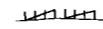
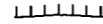
STANISLAUS

SEGMENT 3

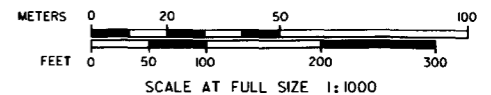
PM VOL 28 PAGE 31
PARCEL 2

**ALL SEGMENTS ARE
COLLATERAL FACILITIES**

~ LEGEND ~

-  Portion to be Relinquished
-  Access Rights Previously Acquired
-  Access Prohibited

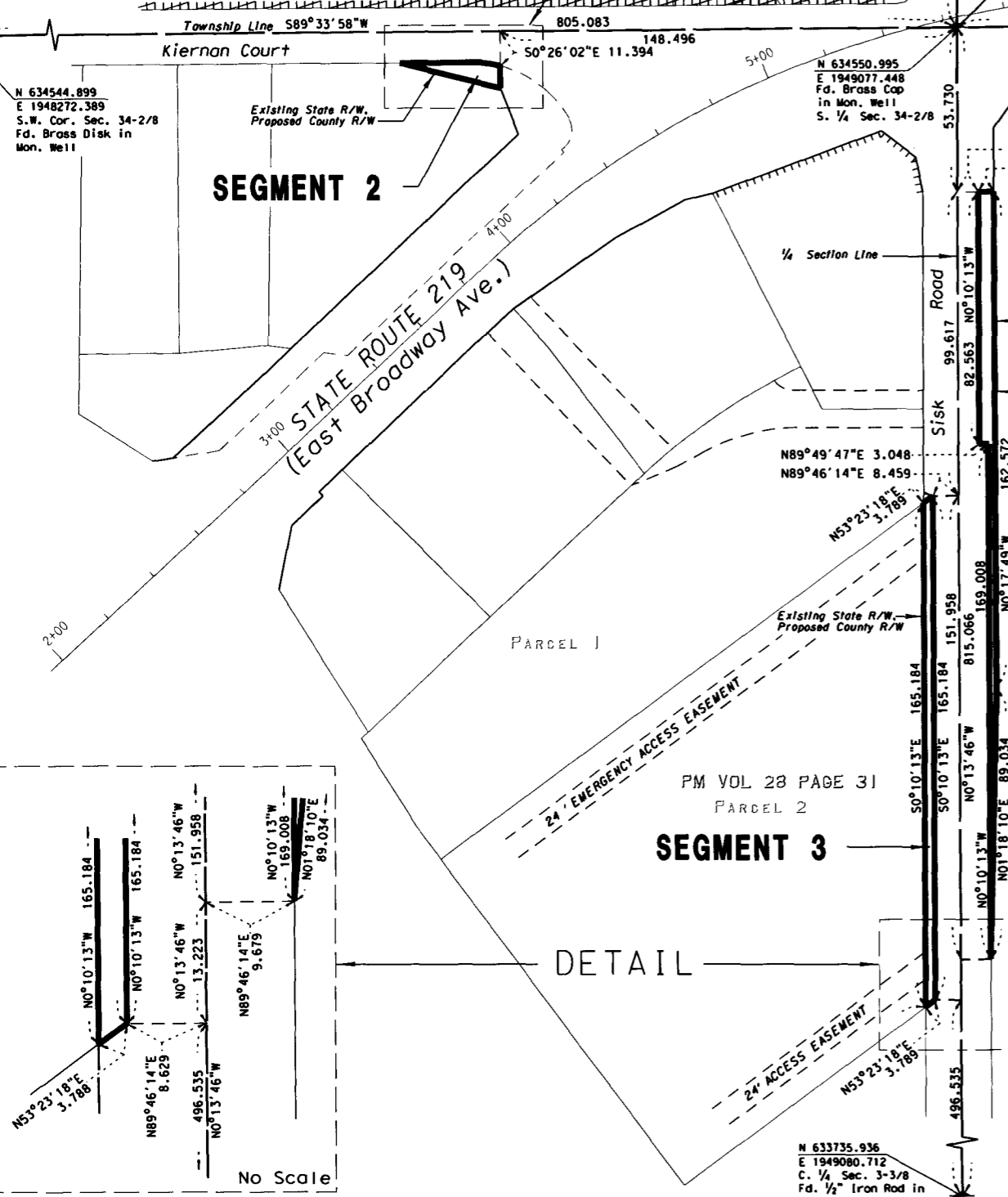
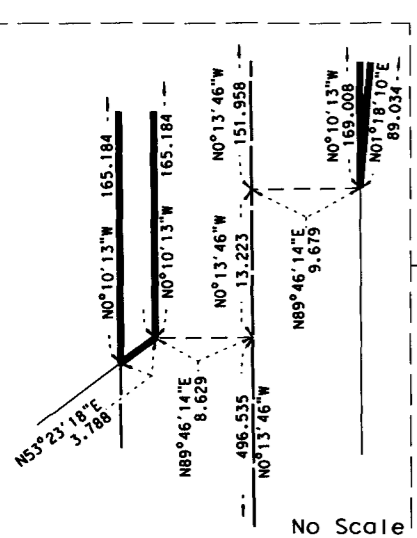
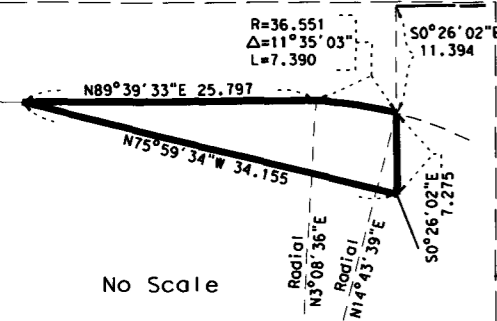
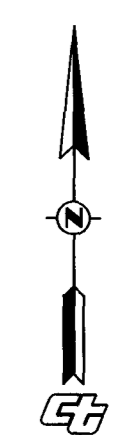
COORDINATES AND BEARINGS ARE ON
CCS 1983 ZONE 3, EPOCH 1991.35.
DISTANCES AND STATIONING ARE GRID
DISTANCES. MULTIPLY BY 1.00006972
TO OBTAIN GROUND DISTANCES.
TO CONVERT METERS TO U.S. SURVEY
FEET MULTIPLY DISTANCES BY 3937/1200.



RELINQUISHMENT MAP

STATE OF CALIFORNIA
BUSINESS, TRANSPORTATION AND HOUSING AGENCY
DEPARTMENT OF TRANSPORTATION

PROPOSED RELINQUISHMENT NO. 16340
CONSISTING OF 6 SEGMENTS TO THE
COUNTY OF STANISLAUS



No Scale

No Scale

N 633735.936
E 1949090.712
C. 1/4 Sec. 3-3/8
Fd. 1/2" Iron Rod in
4x4 Red Wood

T.2 S., R.8 E., M.D.M.

Section 35

ALL SEGMENTS ARE
COLLATERAL FACILITIES

DIST.	COUNTY	ROUTE	KILOMETER POST POSTMILE	SHEET NO.	TOTAL SHEETS
10	STA	219	2.98	4	4
			1.85		

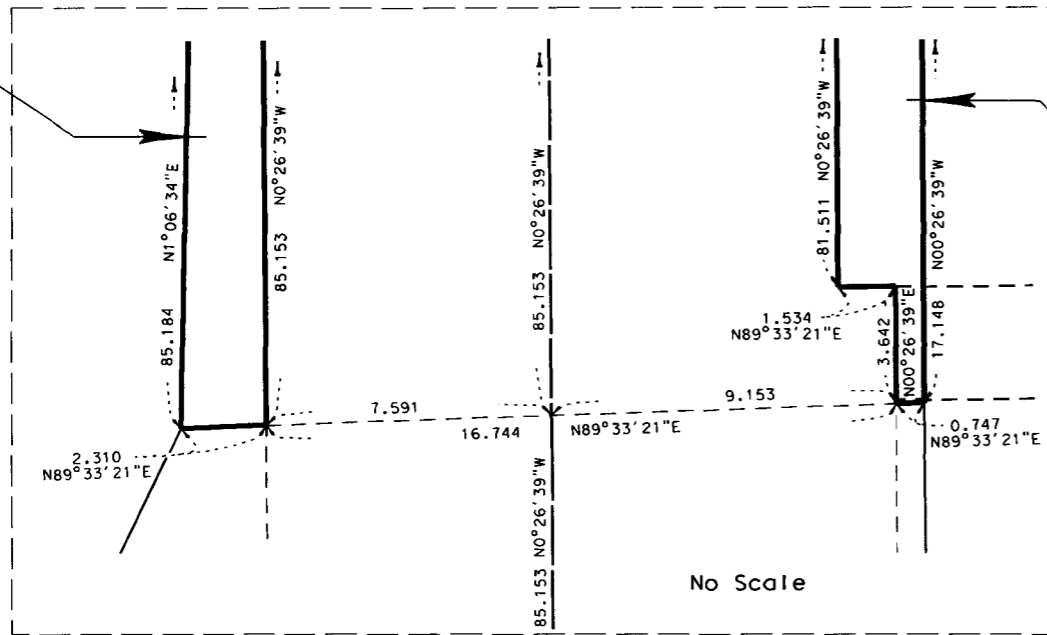
The State of California or its officers or agents shall not be responsible for the accuracy or completeness of electronic copies of this map.

COUNTY

NOTE:
STATE'S RIGHTS ARE NOT EXTINGUISHED
UNTIL RECORDATION OF RELATED CTC
RESOLUTION.



SEGMENT 5



SEGMENT 6

OF

SEGMENT 5

DETAIL

Section 36

50 PM 10
PARCEL A

SEGMENT 6
STANISLAUS



STATE ROUTE 219 (Kiernan Ave.)

KP=2.98
PM=1.85

DALE ROAD

CITY

Section 2

OF

ALBEMERL

TRACT

4-M-19

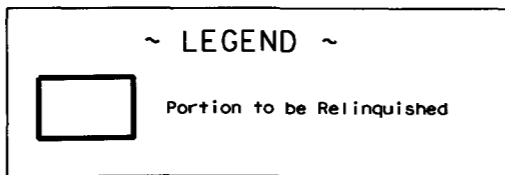
Section 1

MODESTO

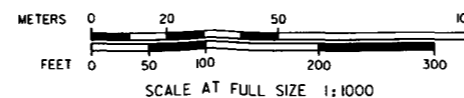
RELINQUISHMENT MAP

STATE OF CALIFORNIA
BUSINESS, TRANSPORTATION AND HOUSING AGENCY
DEPARTMENT OF TRANSPORTATION

PROPOSED RELINQUISHMENT NO. 16340
CONSISTING OF 6 SEGMENTS TO THE
COUNTY OF STANISLAUS



COORDINATES AND BEARINGS ARE ON
CCS 1983 ZONE 3, EPOCH 1991.35.
DISTANCES AND STATIONING ARE GRID
DISTANCES. MULTIPLY BY 1.00006972
TO OBTAIN GROUND DISTANCES.
TO CONVERT METERS TO U.S. SURVEY
FEET MULTIPLY DISTANCES BY 3937/1200.



T.3 S., R.8 E., M.D.M.