

# Delta Wetlands Project

## Draft Place of Use Environmental Impact Report

The public review period during which Semitropic will receive comments on the DEIR starts on Wednesday, May 12, 2010, and ends on Monday, June 28, 2010. Written comments must be received by Monday, June 28, 2010.

### Please send written comments to:

[DeltaWetlandsComments@icfi.com](mailto:DeltaWetlandsComments@icfi.com), or to  
Ms. Megan Smith  
Delta Wetlands Comments  
ICF International, 630 K Street, Suite 400  
Sacramento, CA 95814  
Fax: (916) 456-6724

Public meetings to receive comments on the Draft EIR will be held but have not yet been scheduled.

### The Draft EIR is available at the Project website:

[www.deltawetlandsproject.com](http://www.deltawetlandsproject.com)

Copies of the Draft EIR are available for public inspection and review at Semitropic, 1101 Central Avenue, Wasco, CA 93280, and public libraries as listed on the Project website. A list of public libraries may be requested from Ms. Megan Smith at [DeltaWetlandsComments@icfi.com](mailto:DeltaWetlandsComments@icfi.com), at the ICF International address above, or by calling (916) 737-3000. Many documents referenced in the Draft EIR are available on the Project website. Additional documents referenced in the Draft EIR are available at ICF International.

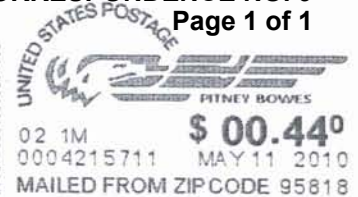


9505430886 0002

CORRESPONDENCE NO. 9  
Page 1 of 1

ICF International  
630 K Street, Suite 400  
Sacramento, CA 95814

Attn: Megan Smith



BOARD OF SUPERVISORS  
2010 MAY 13 11:37 AM

Stanislaus County  
Board of Supervisors  
1010 10th Street, Ste. 6700  
Modesto, CA 95354



# Delta Wetlands Project

## Draft Place of Use Environmental Impact Report



The Semitropic Water Storage District (Semitropic) has made available for public review and comment the Draft Place of Use Environmental Impact Report (Draft EIR) for the Delta Wetlands Project (Project). The Project and its alternatives are located in the counties of Contra Costa, San Joaquin, Kern, Los Angeles, Orange, Riverside, San Bernardino, San Diego, San Luis Obispo, Santa Barbara, and Ventura.

The Project would provide water to Semitropic to augment its water supply, would bank water in the Semitropic Groundwater Storage Bank and Antelope Valley Water Bank, and would provide water to the following places of use: Semitropic, Golden State Water Company, Western Municipal Water District of Riverside County, and the member agencies in The Metropolitan Water District of Southern California.

### The Project would involve:

- installation of diversion and discharge infrastructure;
- levee improvements to protect Project facilities;
- operation and maintenance of the Project for diversion, discharge, habitat management, and recreation;
- supplemental water storage in the Semitropic Groundwater Storage Bank and the Antelope Valley Water Bank; and
- delivery of Project water to specifically identified places of use.

Produced water would be conveyed using existing and previously approved facilities; no additional facilities would be required to deliver Project water to the specified places of use. The Project was analyzed in a Final EIR issued by the State Water Resources Control Board in January 2001. The primary aspects of the Project are substantially unchanged from the Project as analyzed in the 2001 Final EIR. This Draft EIR analyzes changes to the Project, new information, and changed circumstances and identifies the specific places of use for Project water. The 2001 Final EIR is incorporated by reference.

Significant impacts are identified in the categories of water supply; utilities, public services and highways; fisheries; land use and agriculture; visual resources; cultural resources; air quality; cumulative impacts; and growth-inducing impacts. Other resource categories analyzed are water quality; flood control and levee stability; vegetation and wetlands; wildlife; recreation; traffic and navigation; mosquitoes and public health; climate change; and noise.

Based on information known to date, the Project site(s) are not listed toxic sites.