

THE CITY COUNCIL OF THE CITY OF PATTERSON AND
THE BOARD OF SUPERVISORS OF THE COUNTY OF STANISLAUS
AGENDA SUMMARY

DEPT: Public Works AGENDA # 3

AGENDA DATE: August 18, 2009

SUBJECT:

South County Corridor Feasibility Study Project Update

FISCAL IMPACT:

There is no fiscal impact associated with this item.

DISCUSSION:

At the March 31, 2009 Stanislaus County Board of Supervisors meeting, the Board approved a resolution of support to the Stanislaus County of Governments (StanCOG) to formally apply for the Partnership Planning Grant 2009-2010 for the proposed South County Corridor Project to fund the feasibility study with the City of Patterson and Stanislaus County.

The grant application was submitted on April 1, 2009 by StanCOG. The funds requested is \$120,000. The sub-recipients of this grant application (Partnership Planning) are the City of Patterson and Stanislaus County. It is expected that grant application recommendations for funding will be in early fall (September or October 2009). Current indications are that all StanCOG projects ranked well within District 10.

A feasibility study is the first step in the project development process. This process spans that period of time that begins with feasibility studies and ends with the completion of construction. This project planning process will include five phases: 1) Feasibility Phase, 2) Project Study Report (planning and programming phase), 3) Project Approval and Environmental Documentation Phase, 4) Design Phase, and 5) Construction Phase. The purpose of a feasibility study is to identify reasonable projects to put into implementation. The South County Corridor Feasibility Study will consist of a compilation of existing conditions, alternatives and design concepts, cost estimates and economic justification, environmental and social considerations, assumptions, recommendations and implementation steps. This study will gather appropriate information to validate the need to continue the development of a specific project.

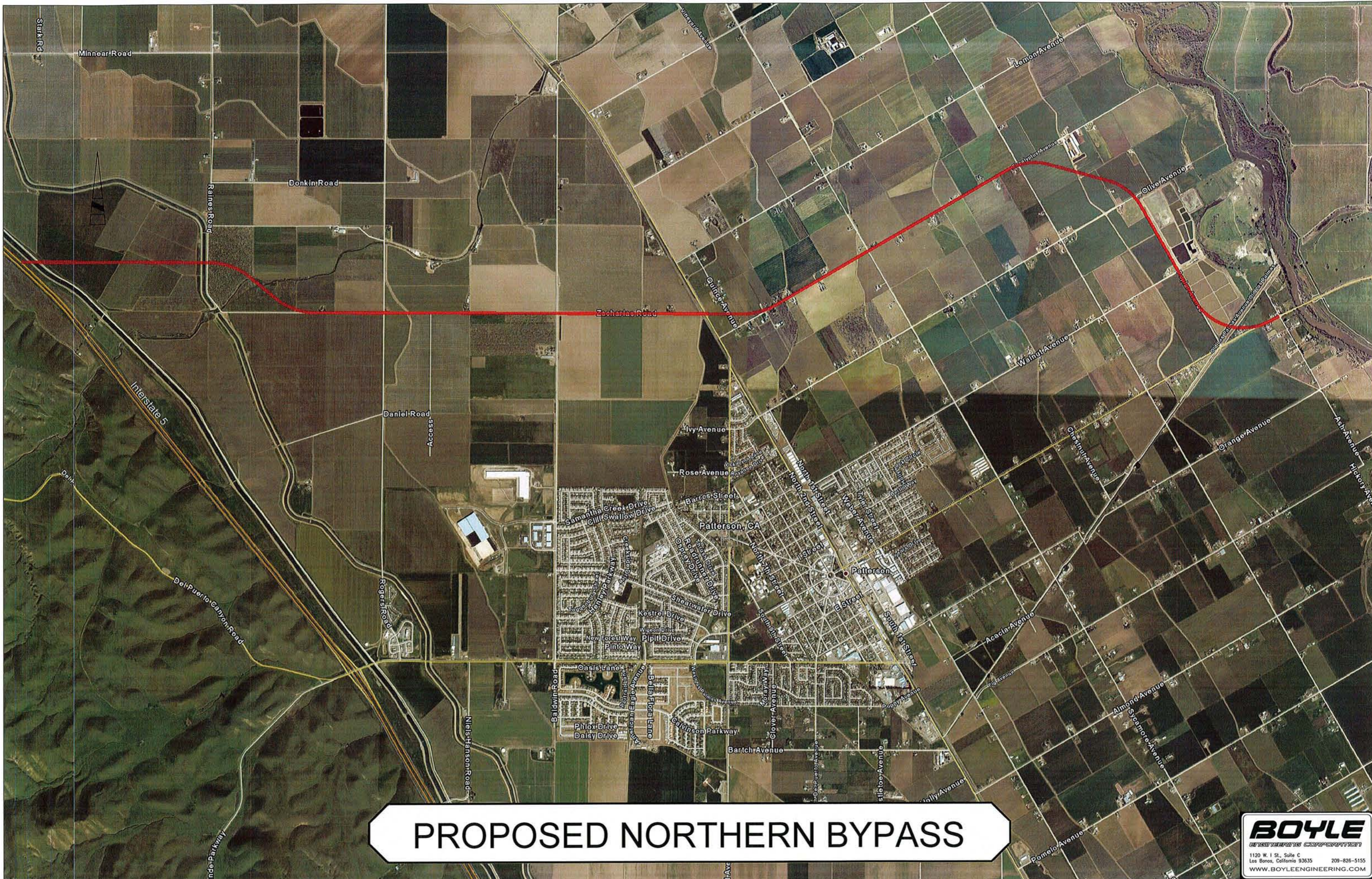
The current scope of this feasibility study for the South County Corridor will cover the area from Interstate 5 to the San Joaquin River, on the north side of Patterson. This scope will include options for river crossing locations.

POLICY ISSUES:

The proposed feasibility study will help to identify and clarify a specific transportation system problem, and then look for practical solutions.

STAFFING IMPACT:

There are no staffing impacts at this time.



PROPOSED NORTHERN BYPASS