

THE BOARD OF SUPERVISORS OF THE COUNTY OF STANISLAUS  
ACTION AGENDA SUMMARY

DEPT: PUBLIC WORKS  
Urgent \_\_\_\_\_ Routine

BOARD AGENDA # 9:25 A.M. (C)

AGENDA DATE AUGUST 7, 2001

CEO Concurs with Recommendation YES \_\_\_\_\_ NO \_\_\_\_\_  
(Information Attached)

4/5 Vote Required YES \_\_\_\_\_ NO

SUBJECT: PUBLIC HEARING TO SET THE 2001/2002 ANNUAL ASSESSMENT FOR THE RIVERDALE LANDSCAPE AND LIGHTING DISTRICT

STAFF  
RECOMMEN-  
DATIONS:

1. CONDUCT A PUBLIC HEARING TO RECEIVE COMMENTS REGARDING THE 2001/2002 ANNUAL ASSESSMENT FOR THE RIVERDALE LANDSCAPE AND LIGHTING DISTRICT;
2. SET THE 2001/2002 ANNUAL ASSESSMENT AS SHOWN ON EXHIBIT "A" FOR THE RIVERDALE LANDSCAPE AND LIGHTING DISTRICT;

(CONTINUED ON PAGE 2)

FISCAL  
IMPACT:

There will be no impact to the General Fund. An annual assessment in the amount of \$34.06 will be charged to each parcel to pay for the requested services and to maintain a reserve account.

BOARD ACTION AS FOLLOWS:

No. 2001-596

On motion of Supervisor Caruso, Seconded by Supervisor Simon  
and approved by the following vote,

Ayes: Supervisors: Mayfield, Blom, Simon, Caruso, and Chair Paul

Noes: Supervisors: None

Excused or Absent: Supervisors: None

Abstaining: Supervisor: None

1)  Approved as recommended

2) \_\_\_\_\_ Denied

3) \_\_\_\_\_ Approved as amended

MOTION:

**SUBJECT:** PUBLIC HEARING TO SET THE 2001/2002 ANNUAL ASSESSMENT FOR THE RIVERDALE LANDSCAPE AND LIGHTING DISTRICT

**PAGE:** 2

**STAFF  
RECOMMEN-  
DATIONS**

**(CONTINUED):**

3. MAKE THE "RIVERDALE LANDSCAPE AND LIGHTING DISTRICT ANNUAL ENGINEER'S REPORT FISCAL YEAR 2001/2002" A PART OF THE RECORD OF THIS PROCEEDING; AND,
4. AUTHORIZE THE AUDITOR-CONTROLLER TO ADD THE ANNUAL ASSESSMENT TO THE 2001/2002 TAX ROLL.

**DISCUSSION:** In an effort to deter crime, promote traffic safety and help law enforcement officers, several property owners within the Riverdale Park subdivision requested that the County initiate proceedings to form the Riverdale Landscape and Lighting District ("District") so that street lights could be installed and maintained. Following the assessment ballot vote required by Proposition 218, a statewide initiative approved by the voters in November, 1998, the District was formed on August 18, 1998 by Board Resolution No. 98-681. The assessment ballot vote also approved the formula to calculate the annual assessment.

Government Code Section 25210.77(A) requires that a written report containing a description of each parcel of real property receiving a particular extended service and the amount of the annual assessment for each parcel be prepared once a year and filed with the Clerk of the Board of Supervisors. The Department of Public Works prepared an Engineer's Report ("Report") and filed it with the Clerk of the Board on July 31, 2001. The annual assessment set forth in the Report applies to the 2001/2002 tax year. The Report shall become a part of the record of this proceeding.

There are 207 Assessor's parcels within the District. Thirty-six 200-watt high pressure sodium street lights were installed, with a current monthly Turlock Irrigation District cost of \$16.30 per light. This results in a power cost of \$7,041.60 for a 12-month period. With an \$8.64 State surcharge, the total cost to operate the street lights is \$7,050.24. The annual assessment is levied without regard to property valuation, and each parcel receives equal benefit from the street lights. The street lights only provide a special benefit to the parcels within the District; therefore, no general benefit has been assigned. Over the past three years, a \$2,835.21 reserve has been established; therefore, no additional money is needed for the reserve account. Therefore, the 2001/2002 annual assessment is as follows:

The 2001/2002 Annual Assessment =  $\$7,050.24 \div 207 \text{ parcels} = \$34.06 \text{ per parcel}$ .

The 2000/2001 Annual Assessment was \$34.06 per parcel.

There is no change in the proposed annual assessment.

**SUBJECT:** PUBLIC HEARING TO SET THE 2001/2002 ANNUAL ASSESSMENT FOR THE RIVERDALE LANDSCAPE AND LIGHTING DISTRICT  
**PAGE:** 3

**DISCUSSION**  
**(Continued)**

The public hearing date was set by the Board of Supervisors on July 31, 2001. Notice of the public hearing was mailed to the residents in the District per the Assessor's Tax Roll. Said notice stated that all persons will be afforded an opportunity to speak.

**POLICY**  
**ISSUE:**

This action is consistent with the Board's policy of providing a safe, healthy community.

**STAFFING**  
**IMPACT:**

There is no staffing impact associated with this item.

RC/la

(H:\SERVICES\RIVERDALE2001-02.RC)

EXHIBIT "A"

RIVERDALE LANDSCAPE AND LIGHTING DISTRICT  
FISCAL YEAR 2001/2002

The Assessor's parcels listed below are subject to the annual assessment:

017-22-04	\$34.06
017-22-07 thru 017-22-64 (inclusive)	\$34.06
017-22-67	\$34.06
017-23-01	\$34.06
017-23-08 thru 017-23-16 (inclusive)	\$34.06
017-23-19 thru 017-23-31 (inclusive)	\$34.06
017-23-33	\$34.06
017-23-34	\$34.06
017-23-36 thru 017-23-38 (inclusive)	\$34.06
017-24-01 thru 017-24-28 (inclusive)	\$34.06
017-24-32	\$34.06
017-24-33	\$34.06
017-25-04 thru 017-25-15 (inclusive)	\$34.06
017-25-17 thru 017-25-32 (inclusive)	\$34.06
017-25-35 thru 017-25-44 (inclusive)	\$34.06
017-25-50 thru 017-25-55 (inclusive)	\$34.06
017-25-57	\$34.06
017-25-60 thru 017-25-70 (inclusive)	\$34.06
017-25-72	\$34.06
017-25-76	\$34.06
017-25-80 thru 017-25-83 (inclusive)	\$34.06
017-25-85 thru 017-25-88 (inclusive)	\$34.06
017-25-90 thru 017-25-96 (inclusive)	\$34.06
017-26-01 thru 017-26-04 (inclusive)	\$34.06
017-26-07 thru 017-26-11 (inclusive)	\$34.06
017-26-13	\$34.06
017-26-20	\$34.06
017-26-22 thru 017-26-26 (inclusive)	\$34.06

**GEORGE STILLMAN**

**Director**

Administration  
Engineering  
Development Services  
Transit  
Facilities Services  
Road Maintenance  
Landfill



# Public Works

STANISLAUS COUNTY

## RIVERDALE LANDSCAPE AND LIGHTING DISTRICT ANNUAL ENGINEER'S REPORT FISCAL YEAR 2001/2002

The Riverdale Landscape and Lighting District (District) was established by the Stanislaus County Board of Supervisors on August 18, 1998, by Board Resolution No. 98-681, following an election conforming with the requirements of Proposition 218. The District was created to install and maintain street lights within the Riverdale Neighborhood to deter crime, promote traffic safety, and aid law enforcement officers. The boundary of the District is shown on Exhibit "A" that is attached hereto and made a part of this Engineer's Report.

Government Code Section 25210.77(A) requires that a written report containing a description of each parcel of real property receiving the particular extended service and the amount of the assessment for each parcel be prepared once a year and filed with the Clerk of the Board of Supervisors.

There are 207 Assessor's parcels within the District, and each parcel receives equal benefit from the street lights. The street lights only provide a special benefit to the parcels within the District, therefore, no general benefit has been assigned.

36 street lights were installed within the District. The street lights are 200 watt high pressure sodium, and the current Turlock Irrigation District Schedule LD rate is \$16.30 per month per light which is the same rate as last year.

The formula used to calculate the assessment, approved with the Proposition 218 election, is the total cost to operate and maintain the street lights (Turlock Irrigation District energy charges, State surcharge, and any charges for the repair and/or replacement of the street lights) divided equally by the number of parcels within the District.

### FISCAL YEAR 2001/2002 ASSESSMENT CALCULATION

The fiscal year is the 12-month period commencing on July 1<sup>st</sup> and ending on the following June 30<sup>th</sup>. However, the assessment is collected in December and April. This means the fiscal year starts on July 1<sup>st</sup>, but the first installment of the assessment will not be collected until December. This creates a six-month lag in receiving the money necessary to operate and maintain the street lights. To overcome this six-month lag, \$3,525.12 will be carried over from the 2000/2001 fiscal year to cover the operating cost of the street lights for the months of July through December, 2001.

RIVERDALE LANDSCAPE AND LIGHTING DISTRICT  
ANNUAL ENGINEER'S REPORT  
FISCAL YEAR 2001/2002

---

Estimated fund balance on June 30, 2001:	\$2,835.21
6-month funding:	3,525.12
6-month expenses:	<u>-3,525.12</u>
Fund balance:	\$2,835.21

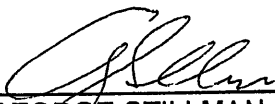
The balance of the District's account will be carried forward as a general reserve and will not be used to offset the cost to operate the District. However, during the last fiscal year, the fund balance has been reduced by \$853.53. The majority of this reduction (\$809.55) was due to last year's annual assessment being reduced by \$3.91 per parcel. If the fund balance decreases during the next year, an increase in the annual assessment will be necessary in order to keep the fund balance at an amount at least equal to 50 percent of the annual power costs.

District Costs:	Improvement costs:	\$	0.00
	State surcharge:		8.64
	Power costs:		<u>7,041.60</u>
	Total Costs:		\$7,050.24

2001/2002 Assessment =  $\$7,050.24 \div 207$  parcels = \$34.06 per parcel.  
2000/2001 Assessment = \$34.06 per parcel.

There is no change in the proposed annual assessment.

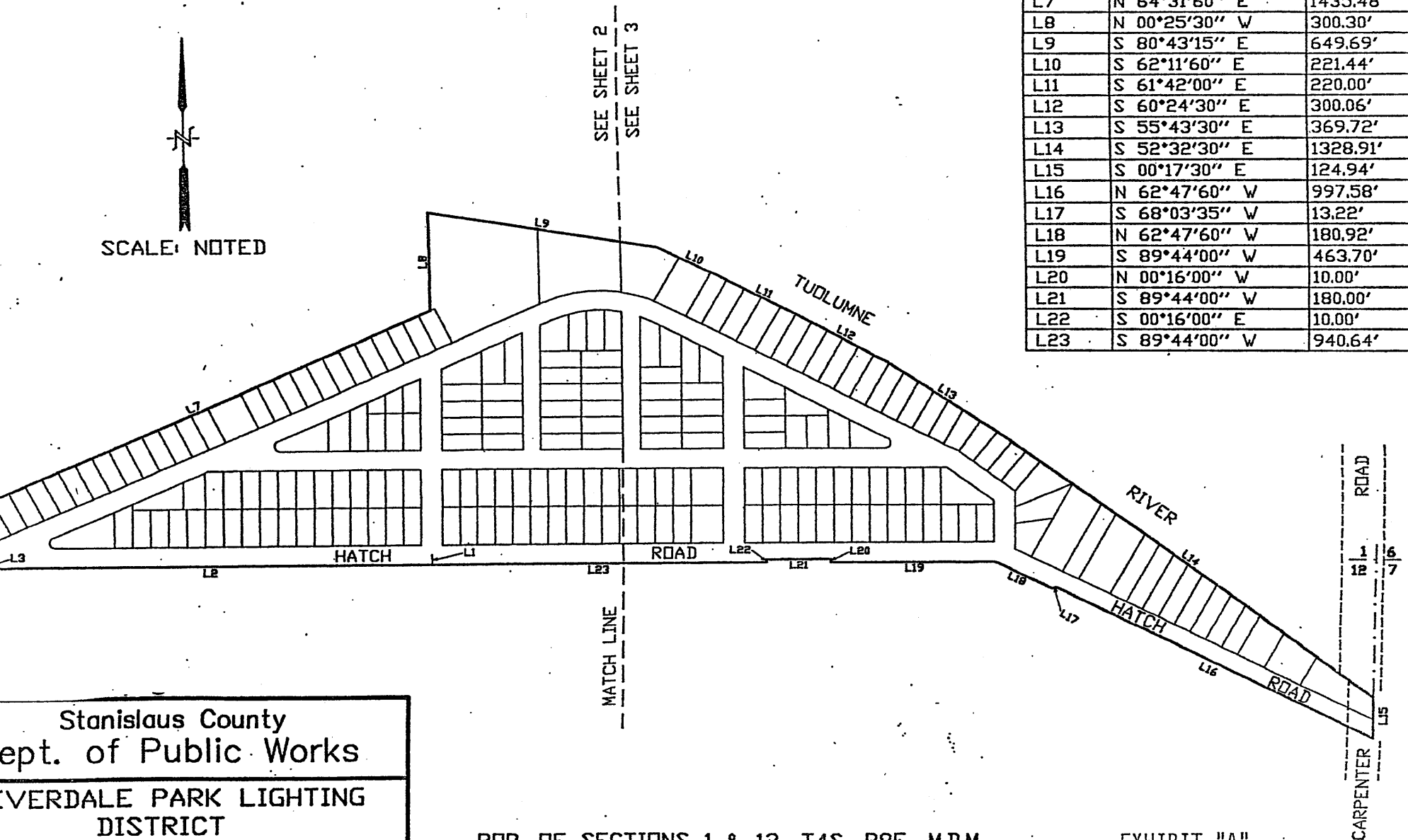
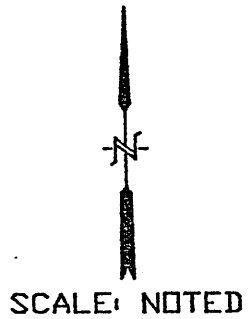
The parcels subject to the assessment are listed on Exhibit B that is attached hereto and made a part of this Engineer's Report.

  
\_\_\_\_\_  
GEORGE STILLMAN, DIRECTOR  
Stanislaus County Department of Public Works

July 18, 2001



NUMBER	DIRECTION	DISTANCE
L1	S 00°25'30" E	30.00'
L2	S 89°44'00" W	1234.41'
L3	N 00°16'00" W	10.00'
L4	S 89°44'00" W	17.62'
L5	N 00°16'00" W	50.00'
L6	N 25°27'60" W	115.00'
L7	N 64°31'60" E	1435.48'
L8	N 00°25'30" W	300.30'
L9	S 80°43'15" E	649.69'
L10	S 62°11'60" E	221.44'
L11	S 61°42'00" E	220.00'
L12	S 60°24'30" E	300.06'
L13	S 55°43'30" E	369.72'
L14	S 52°32'30" E	1328.91'
L15	S 00°17'30" E	124.94'
L16	N 62°47'60" W	997.58'
L17	S 68°03'35" W	13.22'
L18	N 62°47'60" W	180.92'
L19	S 89°44'00" W	463.70'
L20	N 00°16'00" W	10.00'
L21	S 89°44'00" W	180.00'
L22	S 00°16'00" E	10.00'
L23	S 89°44'00" W	940.64'



Stanislaus County  
 Dept. of Public Works  
 EVERDALE PARK LIGHTING  
 DISTRICT  
 4-13-1998 Scale: 1"=400'

POR. OF SECTIONS 1 & 12, T4S, R8E, M.D.M.

EXHIBIT "A"

EXHIBIT "B"

RIVERDALE LANDSCAPE AND LIGHTING DISTRICT  
FISCAL YEAR 2001/2002

The Assessor's parcels listed below are subject to the annual assessment:

017-22-04	\$34.06
017-22-07 thru 017-22-64 (inclusive)	\$34.06
017-22-67	\$34.06
017-23-01	\$34.06
017-23-08 thru 017-23-16 (inclusive)	\$34.06
017-23-19 thru 017-23-31 (inclusive)	\$34.06
017-23-33	\$34.06
017-23-34	\$34.06
017-23-36 thru 017-23-38 (inclusive)	\$34.06
017-24-01 thru 017-24-28 (inclusive)	\$34.06
017-24-32	\$34.06
017-24-33	\$34.06
017-25-04 thru 017-25-15 (inclusive)	\$34.06
017-25-17 thru 017-25-32 (inclusive)	\$34.06
017-25-35 thru 017-25-44 (inclusive)	\$34.06
017-25-50 thru 017-25-55 (inclusive)	\$34.06
017-25-57	\$34.06
017-25-60 thru 017-25-70 (inclusive)	\$34.06
017-25-72	\$34.06
017-25-76	\$34.06
017-25-80 thru 017-25-83 (inclusive)	\$34.06
017-25-85 thru 017-25-88 (inclusive)	\$34.06
017-25-90 thru 017-25-96 (inclusive)	\$34.06
017-26-01 thru 017-26-04 (inclusive)	\$34.06
017-26-07 thru 017-26-11 (inclusive)	\$34.06
017-26-13	\$34.06
017-26-20	\$34.06
017-26-22 thru 017-26-26 (inclusive)	\$34.06