

THE BOARD OF SUPERVISORS OF THE COUNTY OF STANISLAUS
ACTION AGENDA SUMMARY

DEPT: PUBLIC WORKS *SP*
Urgent _____ Routine
CEO Concurs with Recommendation YES _____ NO _____
(Information Attached)

BOARD AGENDA # *C-6
AGENDA DATE JULY 31, 2001
4/5 Vote Required YES NO _____

SUBJECT: APPROVAL TO SET A PUBLIC HEARING ON AUGUST 7, 2001, AT 9:25 A.M. (A), REGARDING FISCAL YEAR 2001/2002 ASSESSMENT FOR SHACKELFORD LANDSCAPE AND LIGHTING DISTRICT

STAFF
RECOMMEN-
DATIONS:

SET A PUBLIC HEARING ON AUGUST 7, 2001, AT 9:25 A.M. (A), REGARDING THE 2001/2002 ASSESSMENT FOR SHACKELFORD LANDSCAPE AND LIGHTING DISTRICT.

FISCAL
IMPACT:

Administrative cost of conducting the required hearing is included as part of the operation and maintenance cost for the district and will be funded as a portion of the assessment.

BOARD ACTION AS FOLLOWS:

No. 2001-572

On motion of Supervisor Blom , Seconded by Supervisor Caruso
and approved by the following vote,
Ayes: Supervisors: Mayfield, Blom, Caruso, and Chair Paul
Noes: Supervisors: None
Excused or Absent: Supervisors: Simon
Abstaining: Supervisor: None

- 1) Approved as recommended
2) _____ Denied
3) _____ Approved as amended

MOTION:

ATTEST: CHRISTINE FERRARO TALLMAN, Clerk

By: Christine Ferraro
Deputy

File No. DL-36-2

SUBJECT: APPROVAL TO SET A PUBLIC HEARING ON AUGUST 7, 2001, AT 9:25 A.M. (A),
REGARDING FISCAL YEAR 2001/2002 ASSESSMENT FOR SHACKELFORD
LANDSCAPE AND LIGHTING DISTRICT

PAGE: 2

DISCUSSION: Government Code Section 25210.77 (A) requires that a written report, for each landscape and lighting district, containing a description of each parcel of real property receiving the particular extended service and the amount of the assessment for each parcel be prepared once a year and filed with the Clerk of the Board of Supervisors. Upon filing of the report, the Clerk shall fix a time, date, and place for hearing thereon and for filing objections or protests thereto. Said report has been filed with the Clerk and is made a part of this resolution.

**POLICY
ISSUE:** This action is consistent with the Board's policy of providing a safe, healthy community.

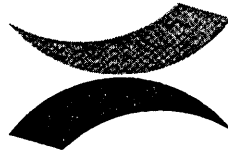
**STAFFING
IMPACT:** There is no staffing impact associated with this action.

RC/la

(H:\SERVICES\ShackelforLD2001-02SetHearingBOS.rc

GEORGE STILLMAN
Director

Administration
Engineering
Development Services
Transit
Facilities Services
Road Maintenance
Landfill



Public Works

STANISLAUS COUNTY

July 31, 2001

NOTICE OF PUBLIC HEARING REGARDING FISCAL YEAR 2001/2002 ASSESSMENT FOR SHACKELFORD LANDSCAPE AND LIGHTING DISTRICT

NOTICE IS HEREBY GIVEN THAT on Tuesday, August 7, 2001, at the hour of 9:25 a.m. (A), or as soon thereafter as the matter may be heard, in the Joint Chambers located in the basement of the County/City Administration Building, 1010 10th Street, Modesto, California, the Board of Supervisors will hold a public hearing regarding the proposed Fiscal Year 2001/2002 assessment for Shackelford Landscape and Lighting District.

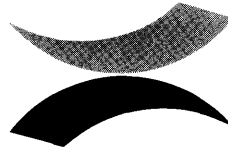
NOTICE IS FURTHER GIVEN THAT, at the above time and place, all persons will be afforded an opportunity to speak. Material submitted to the Board for consideration (i.e. photos, petitions, etc.) will be retained by the County. If a challenge to the above application is made in court, persons may be limited to raising only those issues they or someone else raised at the public hearing described in this notice, or in written correspondence delivered to the Board.

The proposed assessment is \$33.15 per parcel per year, which is the same as last year. For additional information, please call Ron Cherrier at the Stanislaus County Department of Public Works at (209) 525-7571.

(H:\services\ShackelfordNotice.rc)

GEORGE STILLMAN
Director

Administration
Engineering
Development Services
Transit
Facilities Services
Road Maintenance
Landfill



Public Works

STANISLAUS COUNTY

SHACKELFORD LANDSCAPE AND LIGHTING DISTRICT ANNUAL ENGINEER'S REPORT FISCAL YEAR 2001/2002

The Shackelford Landscape and Lighting District (District) was established by the Stanislaus County Board of Supervisors on June 29, 1999, by Board Resolution No. 1999-528, following an election conforming with the requirements of Proposition 218. The District was created to install and maintain street lights within the Shackelford Neighborhood to deter crime, promote traffic safety, and aid law enforcement officers. The boundary of the District is shown on Exhibit "A" that is attached hereto and made a part of this Engineer's Report.

Government Code Section 25210.77(A) requires that a written report containing a description of each parcel of real property receiving the particular extended service and the amount of the assessment for each parcel be prepared once a year and filed with the Clerk of the Board of Supervisors.

There are 495 Assessor's parcels within the District, and each parcel receives equal benefit from the street lights. The street lights only provide a special benefit to the parcels within the District, therefore, no general benefit has been assigned.

80 street lights were installed within the District. The street lights are 200 watt high pressure sodium, and the current Turlock Irrigation District Schedule LD rate is \$16.30 per month per light which is the same rate as last year.

FISCAL YEAR 2001/2002 ASSESSMENT CALCULATION

The formula used to calculate the assessment, approved with the Proposition 218 election, is the total cost to operate and maintain the street lights (Turlock Irrigation District energy charges, State surcharge, and any charges for the repair and/or replacement of the street lights) divided equally by the number of parcels within the District. To cover administration costs and generate a general reserve, an additional \$1.50 assessment will be levied on each parcel.

The fiscal year is the 12-month period commencing on July 1st and ending on the following June 30th. However, the assessment is collected in December and April. This means the fiscal year starts on July 1st, but the first installment of the assessment will not be collected until December. This creates a six-month lag in receiving the money necessary to operate and maintain the street lights. To overcome this six-month lag, \$7,833.13 will be carried over from the 2000/2001 fiscal year to cover the operating cost of the street lights for the months of July through December, 2001.

**SHACKELFORD LANDSCAPE AND LIGHTING DISTRICT
ANNUAL ENGINEER'S REPORT
FISCAL YEAR 2001/2002**

Estimated fund balance on June 30, 2001:	\$7,255.45
6-month funding:	7,833.13
6-month expenses:	<u>-7,833.13</u>
Fund balance:	<u>\$7,255.45</u>


The balance of the District's account will be carried forward as a general reserve and will not be used to offset the cost to operate the District.

District costs:	Improvement costs:	\$ 0.00
	State surcharge:	18.36
	Power costs:	<u>15,648.00</u>
	Total costs:	<u>\$15,666.36</u>

2001/2002 Assessment = $\$15,666.36 \div 495 \text{ parcels} = \$31.65 + \$1.50 = \33.15 per parcel.
2000/2001 Assessment = \$33.15 per parcel

There is no change in the proposed annual assessment.

The parcels subject to the assessment are listed on Exhibit "B" that is attached hereto and made a part of this Engineer's Report.



GEORGE STILLMAN, DIRECTOR
Stanislaus County Department of Public Works

July 17, 2001

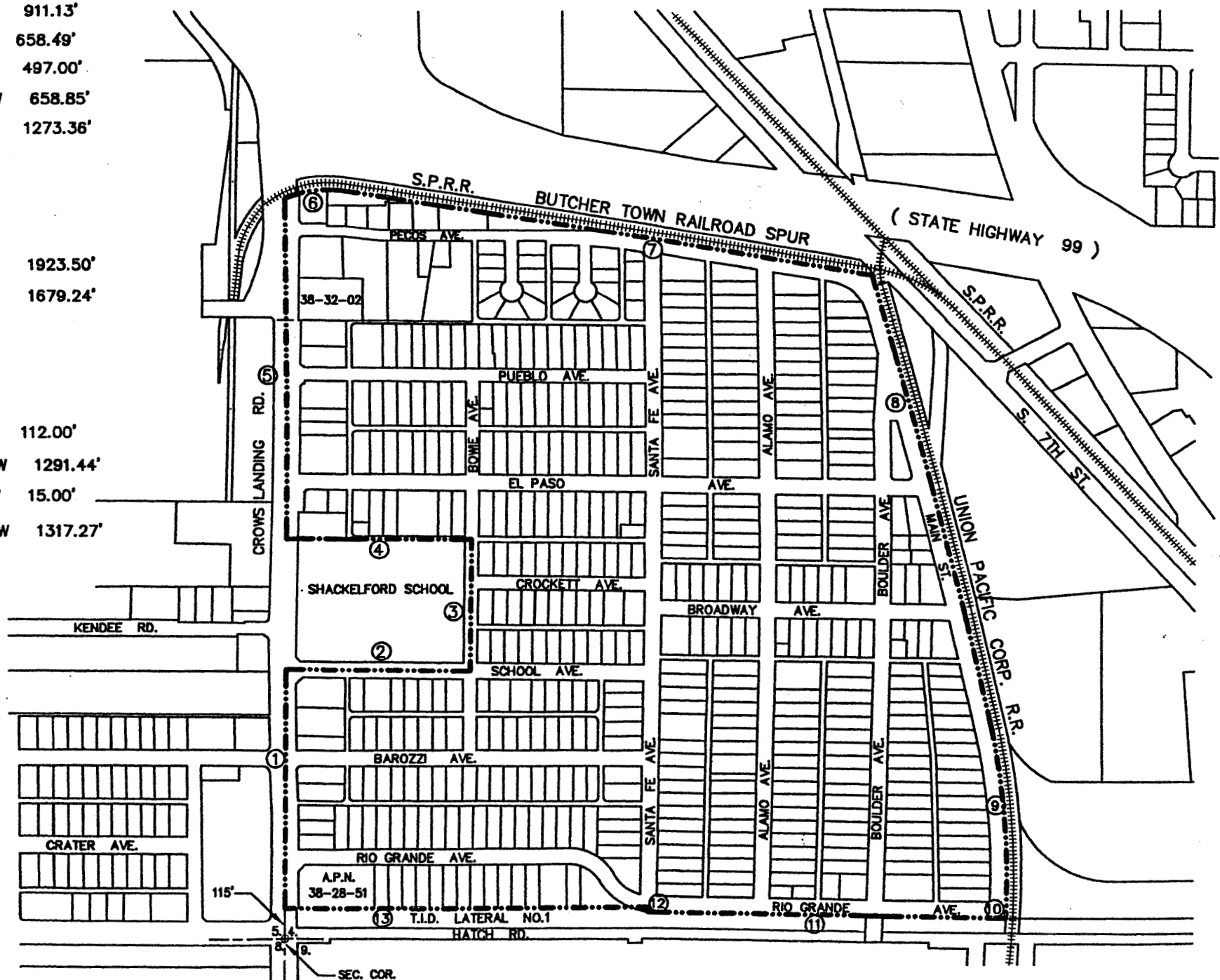


SHACKELFORD LANDSCAPE & LIGHTING DISTRICT

(AREA = 133.67 ACRES)

EXHIBIT "A"

- ① N 0°03'00" W 911.13'
- ② S 89°51'30" E 658.49'
- ③ N 0°02'00" W 497.00'
- ④ N 89°51'00" W 658.85'
- ⑤ N 0°03'00" W 1273.36'
- ⑥ R= 357.04'
Δ= 36°36'00"
T= 118.08'
L= 228.07'
- ⑦ S 80°34'18" E 1923.50'
- ⑧ S 14°02'00" E 1679.24'
- ⑨ R= 2827.90'
Δ= 13°36'00"
T= 337.20'
L= 671.24'
- ⑩ S 0°26'00" E 112.00'
- ⑪ S 89°46'00" W 1291.44'
- ⑫ N 0°02'00" W 15.00'
- ⑬ S 89°46'00" W 1317.27'



SCALE: 1" = 500'



SEC. COR.

**SHACKELFORD LANDSCAPE AND LIGHTING DISTRICT
ANNUAL ENGINEER'S REPORT
FISCAL YEAR 2001/2002**

EXHIBIT "B"

The Assessor's parcels listed below are subject to the Fiscal Year 2001/2002 annual assessment:

038-28-01 thru 038-28-40 (inclusive)	\$33.15
038-28-42	\$33.15
038-28-48	\$33.15
038-28-51	\$33.15
038-29-01 thru 038-29-30 (inclusive)	\$33.15
038-29-33 thru 038-29-76 (inclusive)	\$33.15
038-30-01 thru 038-30-07 (inclusive)	\$33.15
038-30-10	\$33.15
038-30-11	\$33.15
038-30-13	\$33.15
038-30-15 thru 038-30-19 (inclusive)	\$33.15
038-30-21 thru 038-30-44 (inclusive)	\$33.15
038-30-46 thru 038-30-52 (inclusive)	\$33.15
038-31-01 thru 038-31-10 (inclusive)	\$33.15
038-31-12 thru 038-31-42 (inclusive)	\$33.15
038-31-45 thru 038-31-70 (inclusive)	\$33.15
038-32-02 thru 038-32-04 (inclusive)	\$33.15
038-32-06 thru 038-32-16 (inclusive)	\$33.15
038-32-18 thru 038-32-24 (inclusive)	\$33.15
038-32-27 thru 038-32-34 (inclusive)	\$33.15
038-32-36	\$33.15
038-32-37	\$33.15
038-33-03 thru 038-33-09 (inclusive)	\$33.15
038-33-11	\$33.15
038-33-12	\$33.15
038-35-02 thru 038-35-12 (inclusive)	\$33.15
038-35-15 thru 038-35-30 (inclusive)	\$33.15
038-35-32 thru 038-35-59 (inclusive)	\$33.15
038-35-62 thru 038-35-64 (inclusive)	\$33.15
038-36-01 thru 038-36-10 (inclusive)	\$33.15
038-36-12 thru 038-36-43 (inclusive)	\$33.15
038-37-01	\$33.15
038-37-04 thru 038-37-29 (inclusive)	\$33.15
038-37-32 thru 038-37-89 (inclusive)	\$33.15
038-38-01 thru 038-38-40 (inclusive)	\$33.15